

DRILL STEM TEST REPORT

Prepared For: **RJM Company**

P.O. Box 256
Claffin ,Kansas67525

ATTN: Wyatt Urban

Concept Commercial #

Russell 15-15s-30w

Start Date: 2014.01.08 @ 00:00:00

End Date: 2014.01.08 @ 00:00:00

Job Ticket #: 17110 DST #: 2

Superior Testers Enterprises LLC
PO Box 138 Great Bend KS 67530
1-800-792-6902

Printed: 2014.01.08 @ 13:09:49

RJM Company

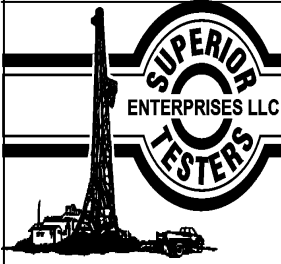
Russell 15-15s-30w

Concept Commercial #

DST # 2

Lagrsing

2014.01.08



DRILL STEM TEST REPORT

RJM Company
 P.O. Box 256
 Claflin, Kansas 67525
 ATTN: Wyatt Urban

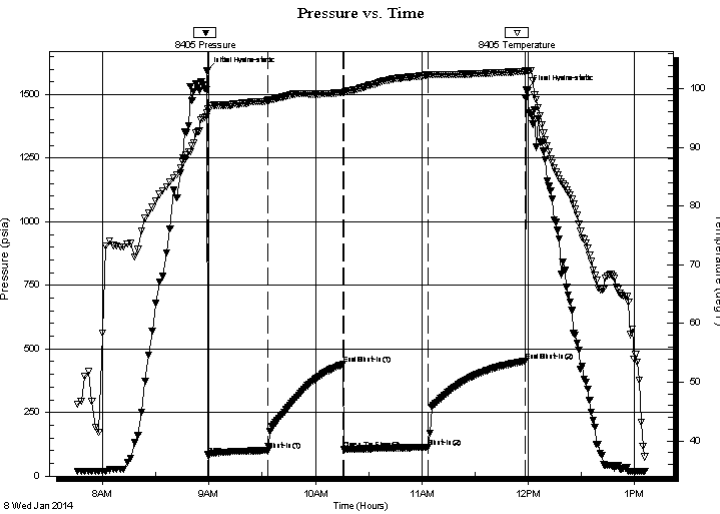
Russell 15-15s-30w
Concept Commercial #
 Job Ticket: 17110 **DST#: 2**
 Test Start: 2014.01.08 @ 00:00:00

GENERAL INFORMATION:

Formation: **Laqnsing**
 Deviated: No Whipstock: ft (KB)
 Time Tool Opened: 00:00:00
 Time Test Ended: 00:00:00
 Test Type: Conventional Bottom Hole (Initial)
 Tester: Gene Budig
 Unit No: 3320-66
 Interval: **3030.00 ft (KB) To 3120.00 ft (KB) (TVD)**
 Reference Elevations: 1839.00 ft (KB)
 Total Depth: 3120.00 ft (KB) (TVD) 1832.00 ft (CF)
 Hole Diameter: 7.88 inches Hole Condition: Fair KB to GR/CF: 7.00 ft

Serial #: 8405 Inside
 Press@RunDepth: 452.36 psia @ 3116.70 ft (KB) Capacity: 5000.00 psia
 Start Date: 2014.01.08 End Date: 2014.01.08 Last Calib.: 2014.01.08
 Start Time: 07:45:00 End Time: 13:06:00 Time On Btm: 2014.01.08 @ 08:59:00
 Time Off Btm: 2014.01.08 @ 11:59:00

TEST COMMENT: 1st Opening 30 Minutes-Weak building blow building built to 7 inches into the water
 1st Shut-in 45 Minutes-No low back
 2nd Opening 45 Minutes-Weak blow built to 2 inches decreased and died in 35 minutes
 2nd Shut-In 60 Minutes No Blow back



PRESSURE SUMMARY

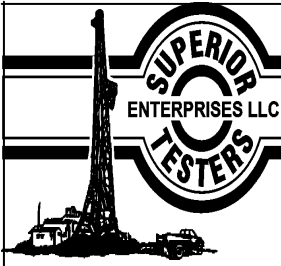
Time (Min.)	Pressure (psia)	Temp (deg F)	Annotation
0	1592.17	95.93	Initial Hydro-static
1	83.96	96.51	Open To Flow (1)
34	100.28	98.01	Shut-In(1)
77	439.85	99.35	End Shut-In(1)
77	105.23	99.33	Open To Flow (2)
125	113.55	102.34	Shut-In(2)
179	452.36	102.96	End Shut-In(2)
180	1518.51	103.04	Final Hydro-static

Recovery

Length (ft)	Description	Volume (bbl)

Gas Rates

Choke (inches)	Pressure (psia)	Gas Rate (Mcf/d)



DRILL STEM TEST REPORT

RJM Company
 P.O. Box 256
 Claflin, Kansas 67525
 ATTN: Wyatt Urban

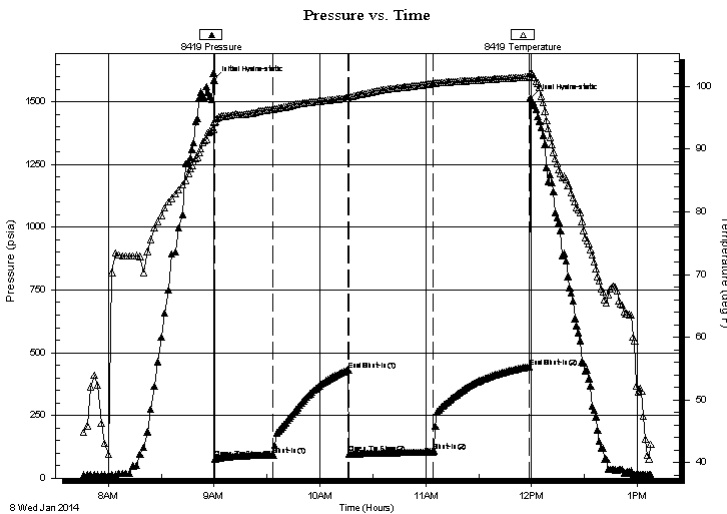
Russell 15-15s-30w
Concept Commercial #
 Job Ticket: 17110 **DST#: 2**
 Test Start: 2014.01.08 @ 00:00:00

GENERAL INFORMATION:

Formation: **Laqsing**
 Deviated: No Whipstock: ft (KB)
 Test Type: Conventional Bottom Hole (Initial)
 Time Tool Opened: 00:00:00 Tester: Gene Budig
 Time Test Ended: 00:00:00 Unit No: 3320-66
 Interval: **3030.00 ft (KB) To 3120.00 ft (KB) (TVD)** Reference Elevations: 1839.00 ft (KB)
 Total Depth: 3120.00 ft (KB) (TVD) 1832.00 ft (CF)
 Hole Diameter: 7.88 inches Hole Condition: Fair KB to GR/CF: 7.00 ft

Serial #: 8419 Inside
 Press@RunDepth: 444.08 psia @ 3115.70 ft (KB) Capacity: 5000.00 psia
 Start Date: 2014.01.08 End Date: 2014.01.08 Last Calib.: 2014.01.08
 Start Time: 07:45:00 End Time: 13:07:30 Time On Btm: 2014.01.08 @ 09:00:00
 Time Off Btm: 2014.01.08 @ 11:59:00

TEST COMMENT: 1st Opening 30 Minutes-Weak building blow building built to 7 inches into the water
 1st Shut-in 45 Minutes-No low back
 2nd Opening 45 Minutes-Weak blow built to 2 inches decreased and died in 35 minutes
 2nd Shut-In 60 Minutes No Blow back



PRESSURE SUMMARY

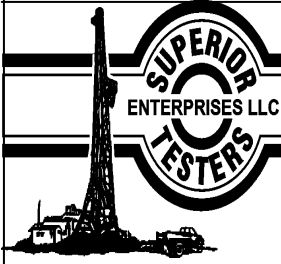
Time (Min.)	Pressure (psia)	Temp (deg F)	Annotation
0	1586.73	94.29	Initial Hydro-static
1	77.45	94.44	Open To Flow (1)
33	92.79	96.38	Shut-In(1)
76	431.22	98.18	End Shut-In(1)
77	97.03	98.07	Open To Flow (2)
124	105.20	100.48	Shut-In(2)
179	444.08	101.54	End Shut-In(2)
179	1513.80	102.01	Final Hydro-static

Recovery

Length (ft)	Description	Volume (bbl)

Gas Rates

Choke (inches)	Pressure (psia)	Gas Rate (Mcf/d)



DRILL STEM TEST REPORT

TOOL DIAGRAM

RJM Company

Russell 15-15s-30w

P.O. Box 256
Clafin ,Kansas67525

Concept Commercial #

Job Ticket: 17110

DST#:2

ATTN: Wyatt Urban

Test Start: 2014.01.08 @ 00:00:00

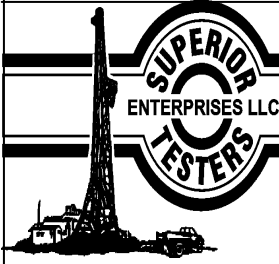
Tool Information

Drill Pipe:	Length: 3007.00 ft	Diameter: 3.80 inches	Volume: 42.18 bbl	Tool Weight:	2000.00 lb
Heavy Wt. Pipe:	Length: 0.00 ft	Diameter: 2.86 inches	Volume: 0.00 bbl	Weight set on Packer:	20000.00 lb
Drill Collar:	Length: 0.00 ft	Diameter: 2.25 inches	Volume: 0.00 bbl	Weight to Pull Loose:	60000.00 lb
			<u>Total Volume: 42.18 bbl</u>	Tool Chased	0.00 ft
Drill Pipe Above KB:	5.00 ft			String Weight: Initial	45000.00 lb
Depth to Top Packer:	3030.00 ft			Final	45000.00 lb
Depth to Bottom Packer:	ft				
Interval between Packers:	89.70 ft				
Tool Length:	117.70 ft				
Number of Packers:	2	Diameter: 6.75 inches			
Tool Comments:					

Tool Description	Length (ft)	Serial No.	Position	Depth (ft)	Accum. Lengths
------------------	-------------	------------	----------	------------	----------------

Hydrolic Tool	5.00			3007.00	
Shut-In Tool	5.00			3012.00	
Safety Joint	2.00			3014.00	
Jars	6.00			3020.00	
Packer	5.00			3025.00	28.00 Bottom Of Top Packer
Packer	5.00			3030.00	
Anchor	5.00			3035.00	
Change Over Sub	0.75			3035.75	
Drill Pipe	62.20			3097.95	
Change Over Sub	0.75			3098.70	
Anchor	16.00			3114.70	
Recorder	1.00	8419	Inside	3115.70	
Recorder	1.00	8405	Inside	3116.70	
Bullnose	3.00			3119.70	89.70 Bottom Packers & Anchor

Total Tool Length: 117.70



DRILL STEM TEST REPORT

FLUID SUMMARY

RJM Company

Russell 15-15s-30w

P.O. Box 256
Clafin ,Kansas67525

Concept Commercial #

Job Ticket: 17110

DST#:2

ATTN: Wyatt Urban

Test Start: 2014.01.08 @ 00:00:00

Mud and Cushion Information

Mud Type: Gel Chem

Cushion Type:

Oil API:

deg API

Mud Weight: 9.00 lb/gal

Cushion Length:

ft

Water Salinity:

ppm

Viscosity: 49.00 sec/qt

Cushion Volume:

bbbl

Water Loss: 8.80 in³

Gas Cushion Type:

Resistivity: ohm.m

Gas Cushion Pressure:

psia

Salinity: 7000.00 ppm

Filter Cake: 1.00 inches

Recovery Information

Recovery Table

Length ft	Description	Volume bbl

Total Length: ft Total Volume: bbl

Num Fluid Samples: 0

Num Gas Bombs: 0

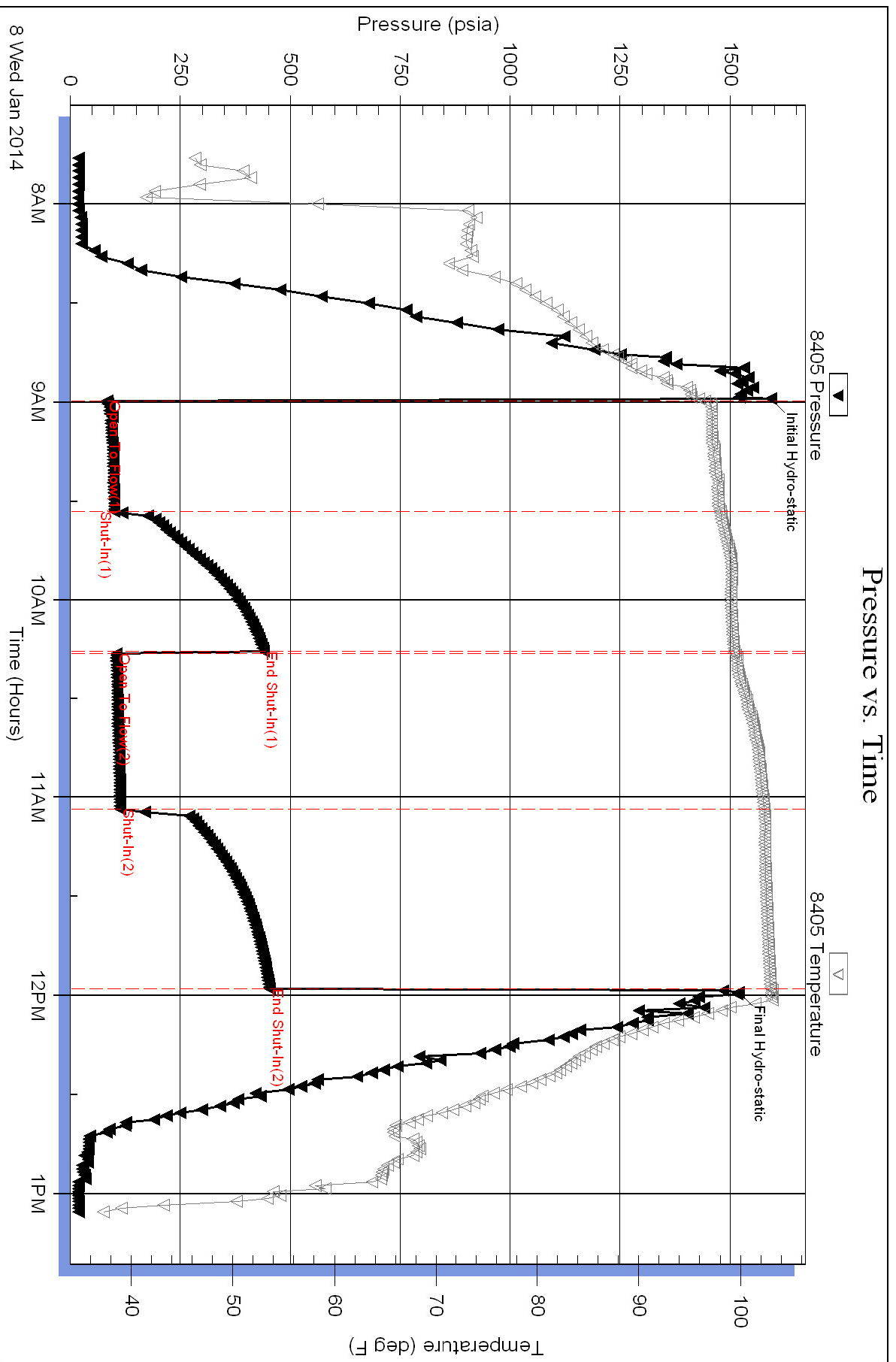
Serial #:

Laboratory Name:

Laboratory Location:

Recovery Comments:

Pressure vs. Time



Pressure vs. Time

