

Marc A. Downing		Geologic Report			
Consulting Petroleum Geologist		Drilling Time and Sample Log			
Operator Downing-Nelson Oil Co., Inc.		Elevation			
Lease Virginia		KB	2062		
No. 1-30		DF	2060		
		GL	2054		
API # 15-051-26659-0000		Casing Record			
Field Wildcat		Surface			
Location 770' FSL & 1390' FWL		8 5/8" @ 1302'			
Sec. 30 Twp. 14s Rge. 18w		Production			
County Ellis State Kansas		5 1/2" @ 3771'			
Formation		Sample tops		Log Tops	
Top Anhydrite		1292	1295	+767	+5
Base Anhydrite		1338	1338	+724	+8
Datum		Struct Comp			
Topoka		3063	3068	-1006	+9
Heebner		3317	3323	-1261	+13
Toronto		3336	3341	-1279	+14
LKC		3365	3370	-1308	+13
BKC		3498	3602	-1540	+23
Marmaton		3632	3636	-1574	+23
Arbuckle		3773	3778	-1716	+23
Total Depth		3771	3773	-1711	
Reference Well For Structural Comparison		DNOCI			
Sarah #1-25		735' FNL & 1815' FEL		Sec. 25-14s-19w	

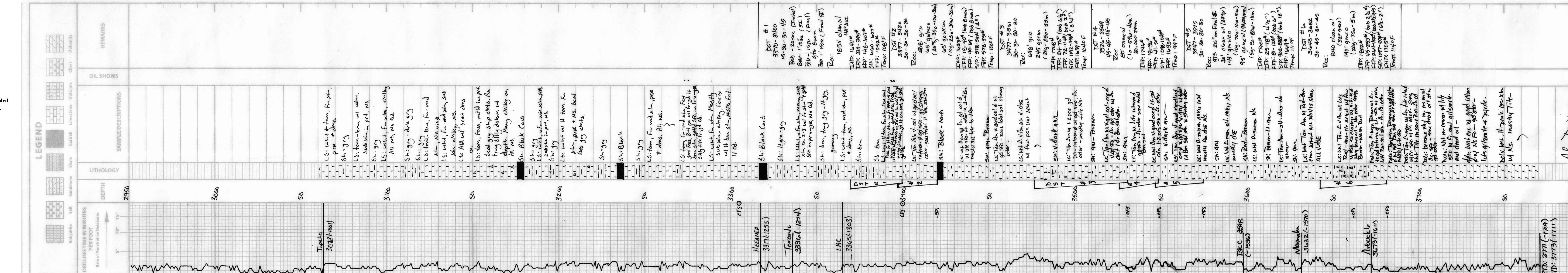
Drilling Contractor		Discovery Drilling, Rig #3	
Commenced 1-31-14		Completed 2-11-14	
Samples Saved From 3050		To RTD	
Drilling Time Kept From 2950		To RTD	
Samples Examined From 3050		To RTD	
Geological Supervision From 2950		To RTD	

**Summary and Recommendations**

Due to structural position, DST recovery, and log evaluation, it was decided to set 5 1/2" production casing for completion in the Arbuckle and LKC.

Respectfully Submitted,

Marc A. Downing



ED: 3771 (-1709)  
 TD: 3773 (-1711)