

CONSOLIDATED
Oil Well Services, LLC

REMIT TO
Consolidated Oil Well Services, LLC
Dept. 970
P.O. Box 4346
Houston, TX 77210-4346

MAIN OFFICE
P.O. Box 884
Chanute, KS 66720
620/431-9210 • 1-800/467-8676
Fax 620/431-0012

INVOICE

Invoice # 265509

Invoice Date: 01/21/2014 Terms: 10/10/30,n/30

Page 1

LARIO OIL & GAS
P.O. BOX 1093
GARDEN CITY KS 67846
(316)265-5611

~~CORINNE 3-33~~
44621
33-14-32
01-19-2014
KS

Corinne 4-33
drilling / surface
AFE 142004
1-24-14 LK

Part Number	Description	Qty	Unit Price	Total
1104S	CLASS "A" CEMENT (SALE)	225.00	18.5500	4173.75
1102	CALCIUM CHLORIDE (50#)	635.00	.9400	596.90
1118B	PREMIUM GEL / BENTONITE	423.00	.2700	114.21
1111	SODIUM CHLORIDE (GRANULA)	100.00	.0000	.00

Sublet Performed	Description	Total
9996-130	CEMENT MATERIAL DISCOUNT	-732.73
9995-130	CEMENT EQUIPMENT DISCOUNT	-244.88

Description	Hours	Unit Price	Total
466 MIN. BULK DELIVERY	1.00	430.00	430.00
57 CEMENT PUMP (SURFACE)	1.00	1150.00	1150.00
57 EQUIPMENT MILEAGE (ONE WAY)	10.00	5.25	52.50

Amount Due 6891.05 if paid after 02/20/2014

Parts:	4884.86	Freight:	.00	Tax:	317.64	AR	5857.39
Labor:	.00	Misc:	.00	Total:	5857.39		
Sublt:	-977.61	Supplies:	.00	Change:	.00		

Signed

Date

BARTLESVILLE, OK 918/338-0808 EL DORADO, KS 316/322-7022 EUREKA, KS 620/583-7664 PONCA CITY, OK 580/762-2303 OAKLEY, KS 785/672-8822 OTTAWA, KS 785/242-4044 THAYER, KS 620/839-5269 GILLETTE, WY 307/686-4914 CUSHING, OK 918/225-2650



CONSOLIDATED
Oil Well Services, LLC

265509

TICKET NUMBER 44621
LOCATION Oakley, Ks.
FOREMAN Dauer

PO Box 884, Chanute, KS 66720
620-431-9210 or 800-467-8676

FIELD TICKET & TREATMENT REPORT
CEMENT

DATE	CUSTOMER #	WELL NAME & NUMBER	SECTION	TOWNSHIP	RANGE	COUNTY
1/19/14	4793	Corinne 3-33	33	14	32	Logan
CUSTOMER Lario Oil & Gas		Corinne 4-33	Oakley			
MAILING ADDRESS 301 S market St.			TRUCK #	DRIVER	TRUCK #	DRIVER
CITY Wichita		STATE Ks	57	Travis		
ZIP CODE 67202 - 3805			466	Lance		

JOB TYPE Surface HOLE SIZE 12 1/4 HOLE DEPTH 346 CASING SIZE & WEIGHT 8 5/8 23#
CASING DEPTH 346 DRILL PIPE _____ TUBING _____ OTHER _____
SLURRY WEIGHT 14.3 SLURRY VOL 1.36 WATER gal/sk _____ CEMENT LEFT In CASING 20'
DISPLACEMENT 20.86 DISPLACEMENT PSI _____ MIX PSI _____ RATE _____

REMARKS: Softy Meeting Rig up on Southwind #70 Run Casing Break Circulation with Rig Pump Hook up to Pump Truck Mix 225 SKs Com 3% CC 2% Gel Washup Pump Lines Displace with 20.86 bbl water Rig Down

Cement Did Circulate

Approx 5 bbl To Pit

Thanks Dauer & Crew

ACCOUNT CODE	QUANTITY or UNITS	DESCRIPTION of SERVICES or PRODUCT	UNIT PRICE	TOTAL
5401 S	1	PUMP CHARGE	\$ 1150.00	\$ 1150.00
5406	10	MILEAGE	\$ 5.25	\$ 52.50
5407 A	10.58	Ten Mileage Delivery	\$ 1.75	\$ 430.00
1104 S	225 SKs	Class 'A' Cement	\$ 18.55	\$ 4173.75
1102	635#	Calcium Chloride	\$.94	\$ 596.90
1118 B	423#	Bentonite	\$.27	\$ 114.21
1111	100#	Salt	NC	NC
			SubTotal	\$ 6517.36
			Less 15%	\$ 977.61
			SubTotal	\$ 5539.75
			7.65	SALES TAX
				317.64
				ESTIMATED TOTAL
				5857.39

completed

RevIn 3737

AUTHORIZATION [Signature] TITLE Inspector DATE 1-29-14

I acknowledge that the payment terms, unless specifically amended in writing on the front of the form or in the customer's account records, at our office, and conditions of service on the back of this form are in effect for services identified on this form.



CONSOLIDATED
Oil Well Services, LLC

REMIT TO
Consolidated Oil Well Services, LLC
Dept. 970
P.O. Box 4346
Houston, TX 77210-4346

MAIN OFFICE
P.O. Box 884
Chanute, KS 66720
620/431-9210 • 1-800/467-8676
Fax 620/431-0012

INVOICE

Invoice # 265864

Invoice Date: 02/11/2014 Terms: 15/15/30,n/30

Page 1

LARIO OIL & GAS
P.O. BOX 1093
GARDEN CITY KS 67846
(316) 265-5611

CORINNE 4-33 AFE 14-004
38193 drilling / long string
33-14S-32W
02-01-2014 2-14-14 LK
KS

Part Number	Description	Qty	Unit Price	Total
1107	FLO-SEAL (25#)	92.00	2.9700	273.24
1110A	KOL SEAL (50# BAG)	650.00	.5600	364.00
1118B	PREMIUM GEL / BENTONITE	2545.00	.2700	687.15
1126	OIL WELL CEMENT	130.00	23.7000	3081.00
1131	60/40 POZ MIX	370.00	15.8600	5868.20
1144G	MUD FLUSH (SALE)	500.00	1.0000	500.00
4104	CEMENT BASKET 5 1/2"	1.00	290.0000	290.00
4130	CENTRALIZER 5 1/2"	9.00	61.0000	549.00
4159	FLOAT SHOE AFU 5 1/2"	1.00	433.7500	433.75
4277A	DV TOOL-WEATHERFORD 5 1/2"	1.00	4900.0000	4900.00
4454	5 1/2" LATCH DOWN PLUG	1.00	567.0000	567.00

Sublet Performed	Description	Total
9996-130	CEMENT MATERIAL DISCOUNT	-2627.00
9995-130	CEMENT EQUIPMENT DISCOUNT	-548.63

Description	Hours	Unit Price	Total
T-118 SINGLE PUMP	1.00	3175.00	3175.00
T-118 EQUIPMENT MILEAGE (ONE WAY)	10.00	5.25	52.50
T-129 MIN. BULK DELIVERY	.50	430.00	215.00
566 MIN. BULK DELIVERY	.50	430.00	215.00

Amount Due 22510.63 if paid after 03/13/2014

Parts:	17513.34	Freight:	.00	Tax:	1138.82	AR	19134.03
Labor:	.00	Misc:	.00	Total:	19134.03		
Sublt:	-3175.63	Supplies:	.00	Change:	.00		

Signed _____

Date _____



CONSOLIDATED
Oil Well Services, LLC

265864

TICKET NUMBER 38193
LOCATION Dakota
FOREMAN Miles Shaw
Fuzzy McCullick

PO Box 884, Chanute, KS 66720
620-431-9210 or 800-467-8676

FIELD TICKET & TREATMENT REPORT
CEMENT

DATE	CUSTOMER #	WELL NAME & NUMBER	SECTION	TOWNSHIP	RANGE	COUNTY
2-1-14	4793	Corinne #4-33	23	145	32W	Logan
CUSTOMER			TRUCK #	DRIVER	TRUCK #	DRIVER
Lario Oil & Gas			4527118	Jordan L		
MAILING ADDRESS			564	Corinne		
CITY			5287129	Jeremy R		
STATE						
ZIP CODE						

JOB TYPE 2 Stages HOLE SIZE 7 7/8" HOLE DEPTH 4489' CASING SIZE & WEIGHT 5 1/2" 15.5 #
CASING DEPTH 4480' DRILL PIPE _____ TUBING _____ OTHER DV tool @ 2249'
SLURRY WEIGHT 138/125 SLURRY VOL 1.42/12.5 WATER gal/sk _____ CEMENT LEFT in CASING 18.50'
DISPLACEMENT 110/56 DISPLACEMENT PSI 504/50 MIX PSI 1200/1800 RATE _____

REMARKS: Safety meeting and rig up on south wind drilling rig #70 float equipment
Centralizer on Jats #100, 102, 98, 94, 90, 86, 82, 78, 51 Basket on middle of 54
DV tool top of sat #54 @ 2249' Run casing to bottom circulate casing hrs
Pump mud flush mix 130 sks OWC with 5# Kols seal shut down clear pump & lines
displace ~~50~~ 50 bbls water @ 100 bbls and with 500 PSI lift
plug land held @ 1200 PSI. Open DV tool with 900 PSI. circulate casing 3 hrs
Pump 50 bbls water mix 300 sks Col 40 per 82 gal 1/4" flush down casing
Shut down clear pump & lines released plug displaced 50 bbls water with 500 PSI
lift plug land held @ 1300 PSI. Cement did circulate 24 bbls to pit
mix socks RH Thanks Miles & crew

ACCOUNT CODE	QUANTITY or UNITS	DESCRIPTION of SERVICES or PRODUCT	UNIT PRICE	TOTAL
5401C	1	PUMP CHARGE	31.75 ⁰⁰	31.75 ⁰⁰
5406	10	MILEAGE	5.25	52.50 ⁰⁰
5407	22 tons	Ton Material delivery min	1.75	430.00 ⁰⁰
1107	92' #	Flashed	2.97	273.24 ⁰⁰
1110A	6050 #	Kols seal	.56	364.00 ⁰⁰
1118B	2545 #	Restarant seal	.27	687.15 ⁰⁰
1120	130 Sks	OWC	23.70	3081.00 ⁰⁰
1131	370 Sks	Col 40 per	15.86	5868.20 ⁰⁰
1144 G	500 gal	Mud Flush	1.00	500.00 ⁰⁰
4404	1	5 1/2" Basket	290.00	290.00 ⁰⁰
4130	1	5 1/2" Centralizer	61.00	549.00 ⁰⁰
4159	1	5 1/2" Float Shoe AFH	433.75	433.75 ⁰⁰
4277A	1	5 7/8" DV tool	4900.00	4900.00 ⁰⁰
4454	1	5 1/2" Latchdown	547.00	547.00 ⁰⁰
		Subtotal		21170.84
		less 15% discount		3175.63
		Subtotal		17995.21
		SALES TAX	7.65	1138.82
		ESTIMATED TOTAL		19134.03

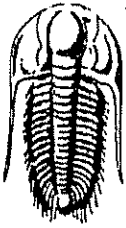
(AFFE 14-004)
put on Ticket

completed

Ravin 3737

AUTHORIZATION Curtis D. ... TITLE Foreman DATE 2/1/14

I acknowledge that the payment terms, unless specifically amended in writing on the front of the form or in the customer's account records, at our office, and conditions of service on the back of this form are in effect for services identified on this form.



**TRILOBITE
TESTING, INC**

DRILL STEM TEST REPORT

Lario Oil & Gas Co.
301 S Market St.
Wichita KS 67202
ATTN: Steve Davis

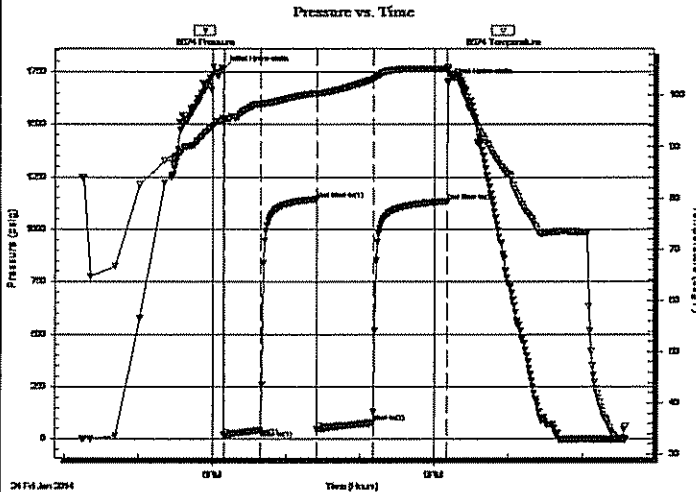
33-14s-32w Logan Co. KS
Corinne # 4-33
Job Ticket: 50245 DST#: 1
Test Start: 2014.01.24 @ 16:14:00

GENERAL INFORMATION:

Formation: LKC "B"
Deviated: No Whipstock: ft (KB)
Time Tool Opened: 18:08:40
Time Test Ended: 23:34:54
Test Type: Conventional Bottom Hole (Initial)
Tester: Will MacLean
Unit No: 72
Interval: 3702.00 ft (KB) To 3730.00 ft (KB) (TVD)
Reference Elevations: 2714.00 ft (KB)
Total Depth: 3730.00 ft (KB) (TVD) 2702.00 ft (CF)
Hole Diameter: 7.88 inches Hole Condition: Good KB to GR/CF: 12.00 ft

Serial #: 8674 Inside
Press@RunDepth: 79.83 psig @ 3703.00 ft (KB) Capacity: 8000.00 psig
Start Date: 2014.01.24 End Date: 2014.01.24 Last Calib.: 2014.01.24
Start Time: 16:14:00 End Time: 23:34:54 Time On Btm: 2014.01.24 @ 18:08:25
Time Off Btm: 2014.01.24 @ 21:10:54

TEST COMMENT: IF- Weak Surface Blow Built to 3"
IS- No Blow
FF- Weak Surface Blow Built to 3 3/4"
FSI- No Blow



PRESSURE SUMMARY

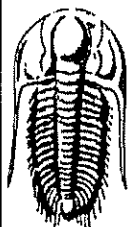
Time (Min.)	Pressure (psig)	Temp (deg F)	Annotation
0	1760.89	95.57	Initial Hydro-static
1	17.19	94.97	Open To Flow (1)
31	43.29	98.16	Shut-In(1)
76	1144.04	100.45	End Shut-In(1)
77	45.49	100.06	Open To Flow (2)
122	79.83	103.15	Shut-In(2)
183	1134.08	105.17	End Shut-In(2)
183	1698.90	105.57	Final Hydro-static

Recovery

Length (ft)	Description	Volume (bbl)
62.00	MCW 34%m 66%w with Few Oil Spots	0.87
62.00	MCW 16%m 84%w with Few Oil Spots	0.87
8.00	WCM 28%w 72%m with a Skim of Oil	0.11
2.00	MCO 6%m 94%oil	0.03

Gas Rates

	Choke (Inches)	Pressure (psig)	Gas Rate (Mcf/d)



TRILOBITE
TESTING, INC.

DRILL STEM TEST REPORT

FLUID SUMMARY

Lario Oil & Gas Co.

33-14s-32w Logan Co. KS

301 S Market St.
Wichita KS 67202

Corinne # 4-33

Job Ticket: 50245

DST#: 1

ATTN: Steve Davis

Test Start: 2014.01.24 @ 16:14:00

Mud and Cushion Information

Mud Type: Gel Chem

Cushion Type:

Oil API:

deg API

Mud Weight: 9.00 lb/gal

Cushion Length:

ft

Water Salinity:

26000 ppm

Viscosity: 41.00 sec/qt

Cushion Volume:

bbf

Water Loss: 7.18 in³

Gas Cushion Type:

Resistivity: ohm.m

Gas Cushion Pressure:

psig

Salinity: 1800.00 ppm

Filter Cake: 1.00 inches

Recovery Information

Recovery Table

Length ft	Description	Volume bbf
62.00	MCW 34% _m 66% _w with Few Oil Spots	0.870
62.00	MCW 16% _m 84% _w with Few Oil Spots	0.870
8.00	WCM 28% _w 72% _m with a Skim of Oil	0.112
2.00	MCO 6% _m 94% _{oil}	0.028

Total Length: 134.00 ft

Total Volume: 1.880 bbf

Num Fluid Samples: 0

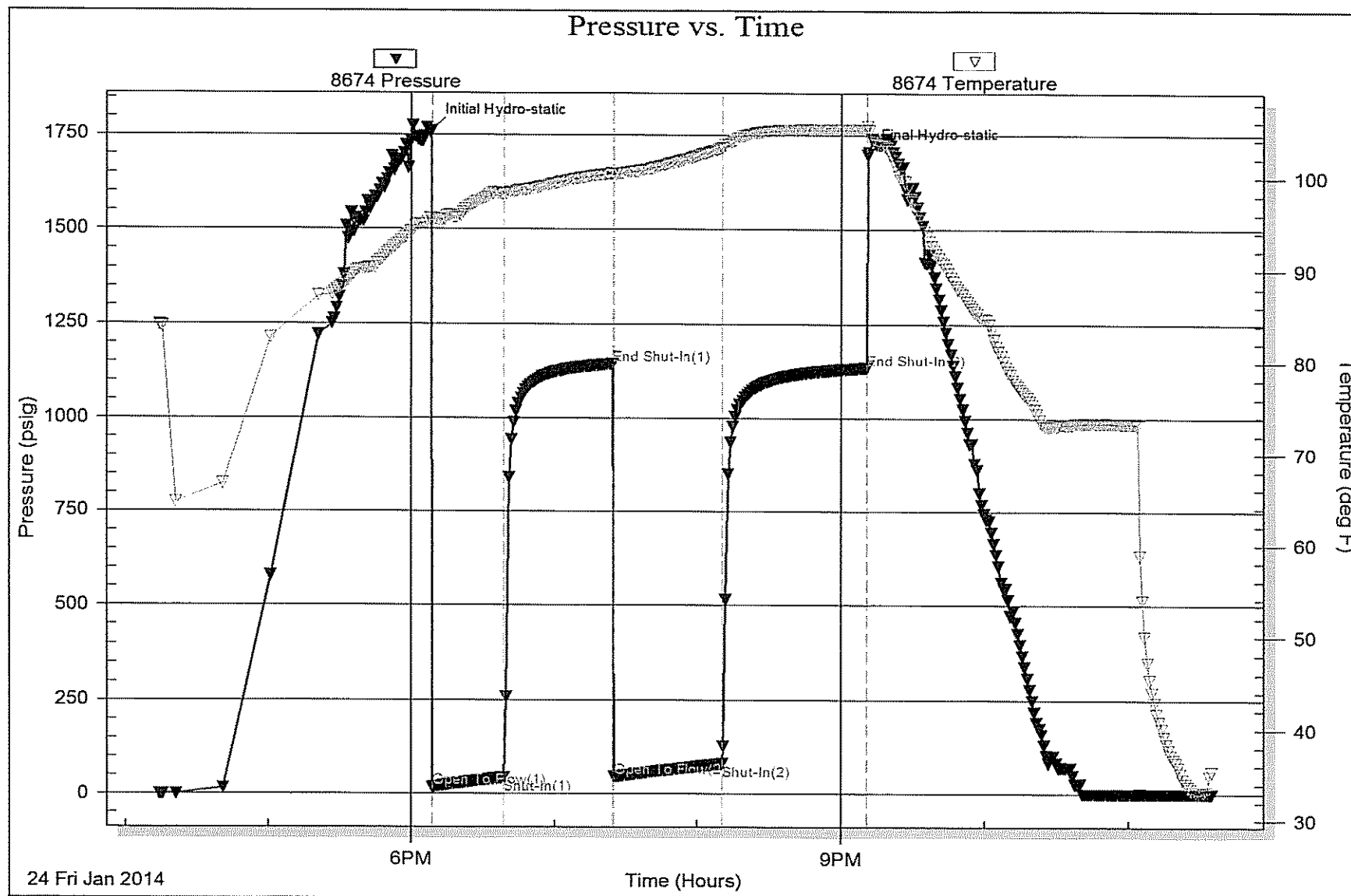
Num Gas Bombs: 0

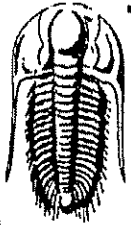
Serial #:

Laboratory Name:

Laboratory Location:

Recovery Comments: RW is .401 @ 49f = 26000





TRILOBITE TESTING, INC.

DRILL STEM TEST REPORT

Lario Oil & Gas Co.

33-14s-32w Logan Co. KS

301 S Market St.
Wichita KS 67202

Corinne # 4-33

Job Ticket: 54575

DST#: 2

ATTN: Steve Davis

Test Start: 2014.01.25 @ 07:45:00

GENERAL INFORMATION:

Formation: **Lansing 'D'**

Deviated: No Whipstock: ft (KB)

Time Tool Opened: 09:34:15

Time Test Ended: 14:32:15

Interval: **3756.00 ft (KB) To 3780.00 ft (KB) (TVD)**

Total Depth: **3780.00 ft (KB) (TVD)**

Hole Diameter: **7.88 inches** Hole Condition: Good

Test Type: Conventional Bottom Hole (Reset)

Tester: Cornelio Landa III

Unit No: 72

Reference Elevations: 2714.00 ft (KB)

2702.00 ft (CF)

KB to GR/CF: 12.00 ft

Serial #: **8355**

Outside

Press@RunDepth: 58.31 psig @ 3760.00 ft (KB)

Start Date: 2014.01.25

End Date: 2014.01.25

Capacity: 8000.00 psig

Last Calib.: 2014.01.25

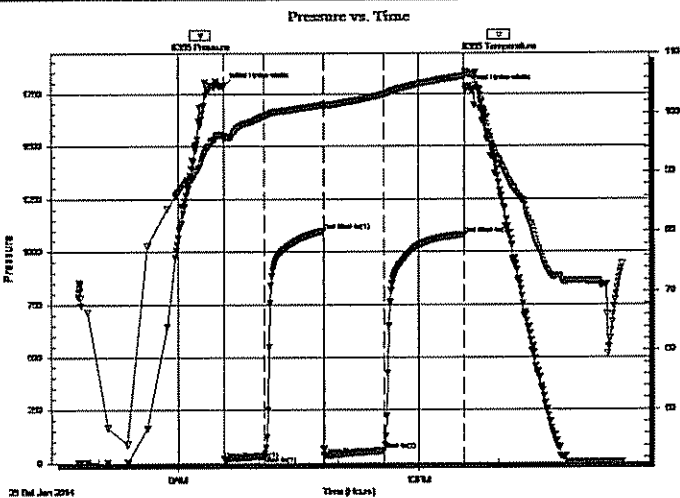
Start Time: 07:45:05

End Time: 14:32:14

Time On Blm: 2014.01.25 @ 09:34:00

Time Off Blm: 2014.01.25 @ 12:35:00

TEST COMMENT: IF: 9 1/2 in. of Blow
IS: Bled off in 1 min.-Weak surface blow back-Died in 12 min.
FF: B.o.b. in 27 min.
FS: Bled off in 2 min.-Weak surface blow back-Died in 15 min.



PRESSURE SUMMARY

Time (Min.)	Pressure (psig)	Temp (deg F)	Annotation
0	1786.40	96.21	Initial Hydro-static
1	18.90	95.50	Open To Flow (1)
31	34.20	99.46	Shut-In(1)
75	1098.13	101.32	End Shut-In(1)
76	36.80	101.22	Open To Flow (2)
120	58.31	103.11	Shut-In(2)
181	1078.52	106.18	End Shut-In(2)
181	1769.47	106.95	Final Hydro-static

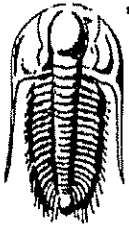
Recovery

Length (ft)	Description	Volume (bbl)
10.00	G & OCM 5g 35o 60m	0.14
116.00	Cgo 30g 70o	1.63
0.00	GIP=126	0.00
0.00	Gravity=36	0.00

* Recovery from multiple tests

Gas Rates

	Choke (inches)	Pressure (psig)	Gas Rate (Mcf/d)



**TRILOBITE
TESTING, INC.**

DRILL STEM TEST REPORT

Lario Oil & Gas Co.
301 S Market St.
Wichita KS 67202
ATTN: Steve Davis

33-14s-32w Logan Co. KS

Corinne # 4-33
Job Ticket: 54575 DST#: 2
Test Start: 2014.01.25 @ 07:45:00

GENERAL INFORMATION:

Formation: **Lansing 'D'**
Deviated: No Whipstock: ft (KB)
Time Tool Opened: 09:34:15
Time Test Ended: 14:32:15

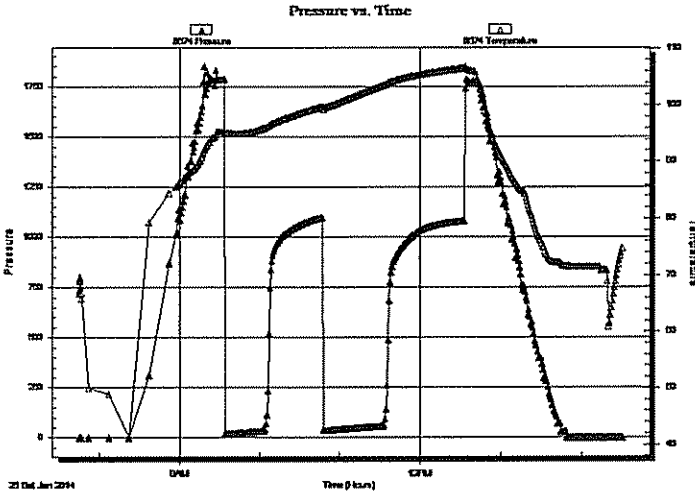
Test Type: Conventional Bottom Hole (Resel)
Tester: Cornelio Landa III
Unit No: 72

Interval: **3756.00 ft (KB) To 3780.00 ft (KB) (TVD)**
Total Depth: 3780.00 ft (KB) (TVD)
Hole Diameter: 7.88 inches Hole Condition: Good

Reference Elevations: 2714.00 ft (KB)
2702.00 ft (CF)
KB to GR/CF: 12.00 ft

Serial #: 8674 Inside
Press@RunDepth: psig @ 3760.00 ft (KB) Capacity: 8000.00 psig
Start Date: 2014.01.25 End Date: 2014.01.25 Last Calib.: 2014.01.25
Start Time: 07:45:05 End Time: 14:30:59 Time On Btm:
Time Off Btm:

TEST COMMENT: IF: 9 1/2 in. of Blow
IS: Bled off in 1 min.-Weak surface blow back-Died in 12 min.
FF: B.o.b. in 27 min.
FSI: Bled off in 2 min.-Weak surface blow back-Died in 15 min.



PRESSURE SUMMARY

Time (Min.)	Pressure (psig)	Temp (deg F)	Annotation

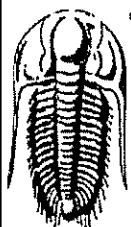
Recovery

Length (ft)	Description	Volume (bbl)
10.00	G & OCM 5g 35o 60m	0.14
116.00	Cgo 30g 70o	1.63
0.00	GIP=126	0.00
0.00	Gravity=36	0.00

Gas Rates

Choke (inches)	Pressure (psig)	Gas Rate (Mcf/d)

* Recovery from multiple tests



**TRILOBITE
TESTING, INC**

DRILL STEM TEST REPORT

FLUID SUMMARY

Lario Oil & Gas Co.

33-14s-32w Logan Co. KS

301 S Market St.
Wichita KS 67202

Corinne # 4-33

Job Ticket: 54575

DST#: 2

ATTN: Steve Davis

Test Start: 2014.01.25 @ 07:45:00

Mud and Cushion Information

Mud Type: Gel Chem

Cushion Type:

Oil API:

36 deg API

Mud Weight: 9.00 lb/gal

Cushion Length:

ft

Water Salinity:

ppm

Viscosity: 50.00 sec/qt

Cushion Volume:

bbbl

Water Loss: 7.96 in³

Gas Cushion Type:

Resistivity: 0.00 ohm.m

Gas Cushion Pressure:

psig

Salinity: 2700.00 ppm

Filter Cake: 1.00 inches

Recovery Information

Recovery Table

Length ft	Description	Volume bbbl
10.00	G & OCM 5g 35o 60m	0.140
116.00	Cgo 30g 70o	1.627
0.00	GIP=126	0.000
0.00	Gravity=36	0.000

Total Length: 126.00 ft

Total Volume: 1.767 bbl

Num Fluid Samples: 0

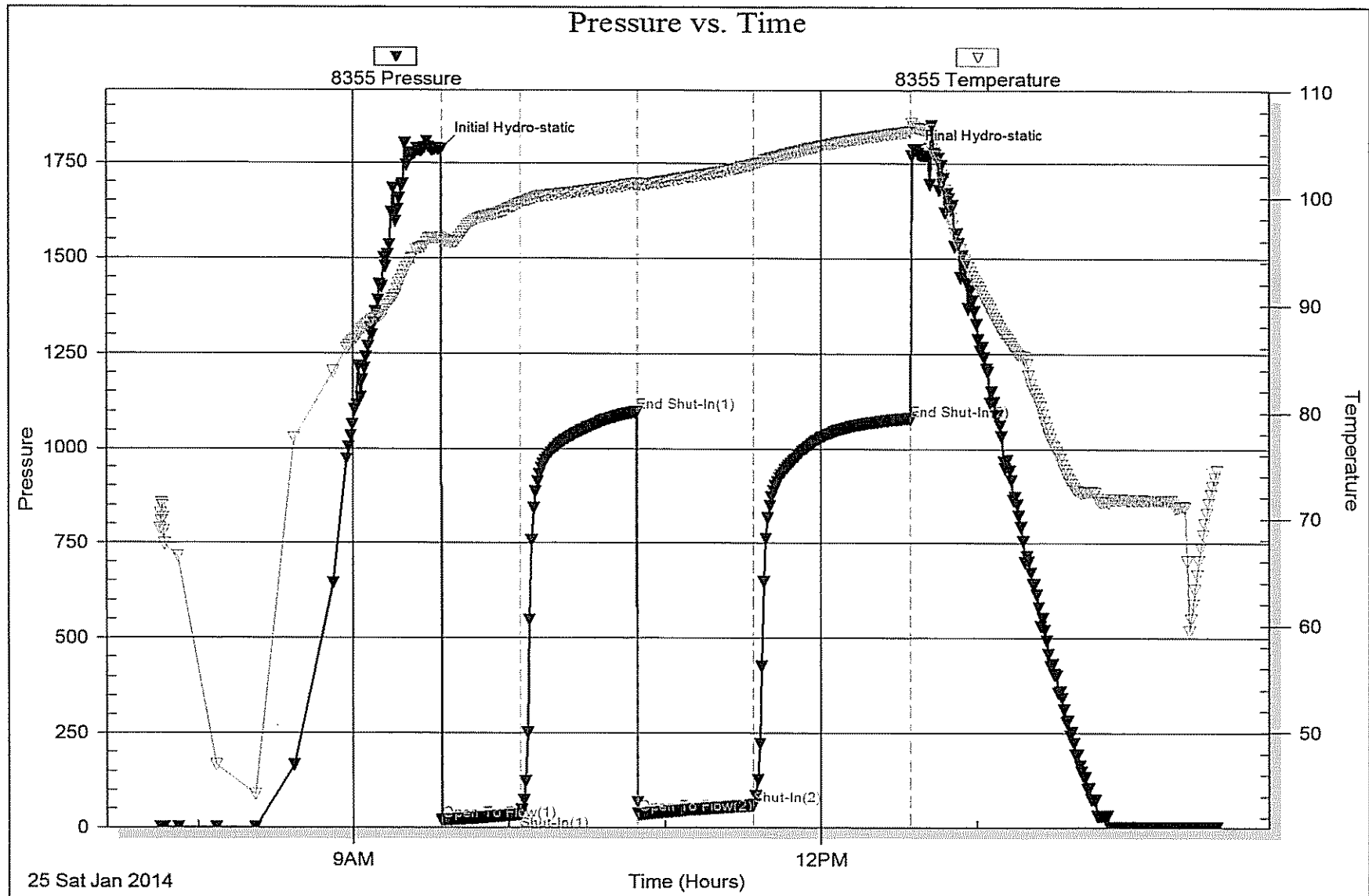
Num Gas Bombs: 0

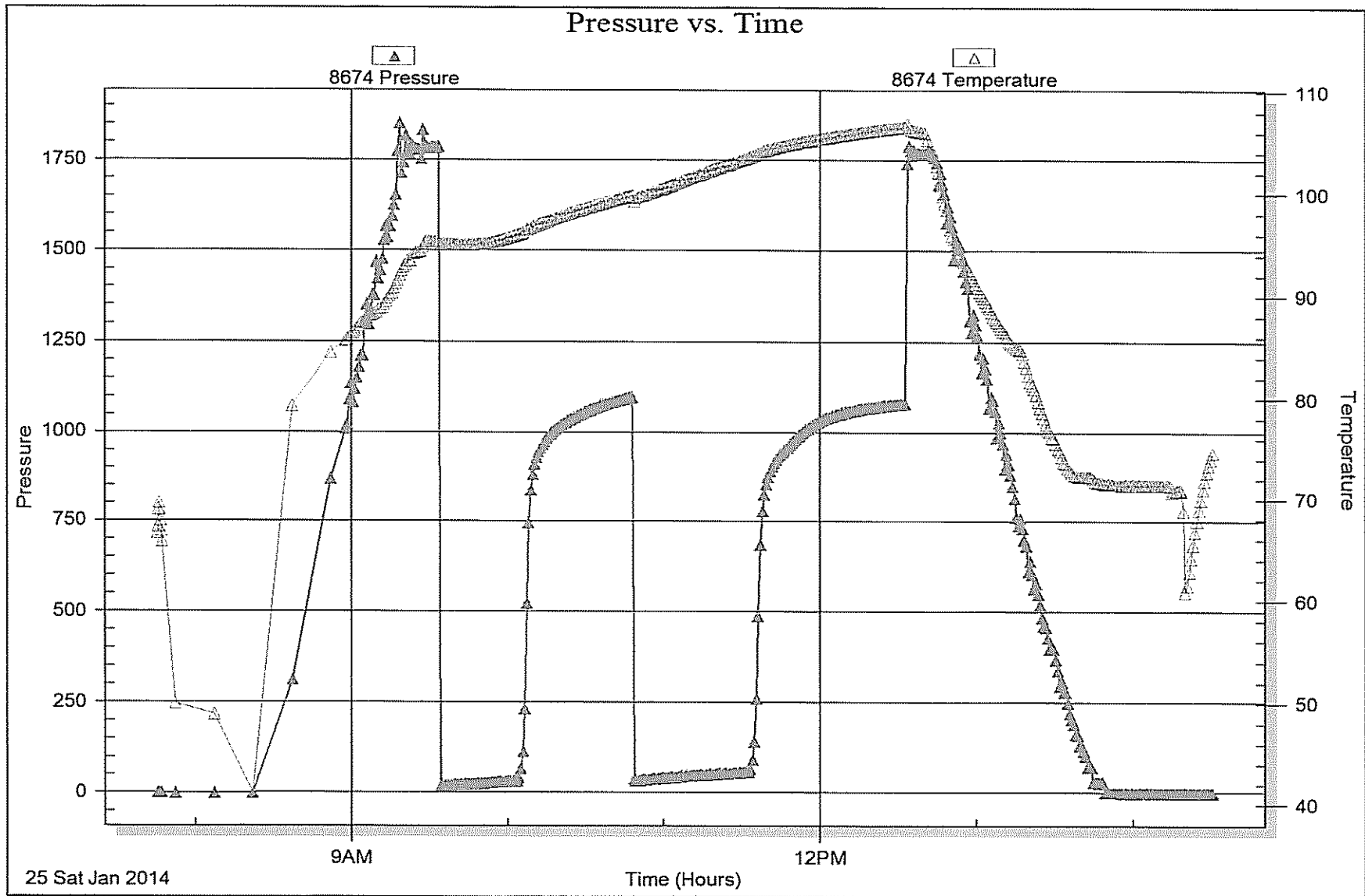
Serial #:

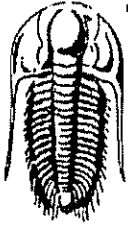
Laboratory Name:

Laboratory Location:

Recovery Comments:







TRILOBITE TESTING, INC.

DRILL STEM TEST REPORT

Lario Oil & Gas Co.
301 S Market St.
Wichita KS 67202
ATTN: Steve Davis

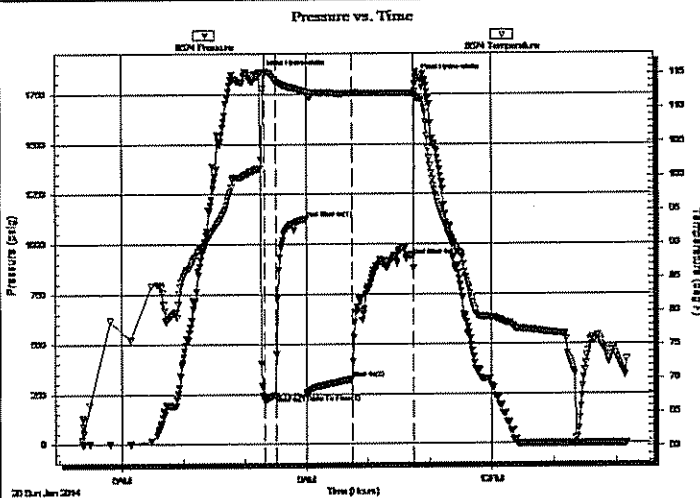
33-14s-32w Logan Co. KS
Corinne # 4-33
Job Ticket: 55701 DST#: 3
Test Start: 2014.01.26 @ 05:22:00

GENERAL INFORMATION:

Formation: **Lansing "H & I"**
Deviated: No Whipstock: ft (KB)
Time Tool Opened: 08:19:00
Time Test Ended: 14:10:00
Test Type: Conventional Bottom Hole (Reset)
Tester: Cornelio Landa III
Unit No: 72
Interval: **3838.00 ft (KB) To 3896.00 ft (KB) (TVD)**
Total Depth: **3896.00 ft (KB) (TVD)**
Reference Elevations: 2714.00 ft (KB)
2702.00 ft (CF)
Hole Diameter: 7.88 inches Hole Condition: Good
KB to GR/CF: 12.00 ft

Serial #: 8674 Inside
Press@RunDepth: 323.88 psig @ 3843.00 ft (KB) Capacity: 8000.00 psig
Start Date: 2014.01.26 End Date: 2014.01.26 Last Calib.: 2014.01.26
Start Time: 05:22:05 End Time: 14:10:00 Time On Btm: 2014.01.26 @ 08:15:00
Time Off Btm: 2014.01.26 @ 10:46:15

TEST COMMENT: IF: B.o.b. in 45 seconds
IS: Bled off in 2 min.-No return
FF: B.o.b. in 10 min.
FSI: Bled off in 2 min.-Surface blow back after 1 min, shut-in-Built to B.o.b. in 48 min.



PRESSURE SUMMARY

Time (Min.)	Pressure (psig)	Temp (deg F)	Annotation
0	1851.12	101.11	Initial Hydro-static
4	218.83	115.12	Open To Flow (1)
15	244.05	113.89	Shut-In(1)
45	1126.04	112.40	End Shut-In(1)
46	249.83	111.94	Open To Flow (2)
90	323.88	112.19	Shut-In(2)
150	939.80	112.13	End Shut-In(2)
152	1828.90	111.90	Final Hydro-static

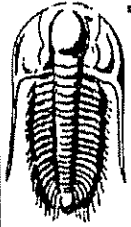
Recovery

Length (ft)	Description	Volume (bbl)
126.00	Ocg & Mcw 2o 3g 45m 50w	1.77
348.00	Ocg & Mcw 2o 10g 30m 58w	4.88
126.00	Ocg & Wcm 4o 14g 27w 55m	1.77
159.00	Cgo 50g 50o	2.23
0.00	Gravity=36 GIP=186	0.00
0.00	Rw .148@120=29000	0.00

* Recovery from multiple tests

Gas Rates

	Choke (inches)	Pressure (psig)	Gas Rate (Mcf/d)



TRILOBITE
TESTING, INC.

DRILL STEM TEST REPORT

FLUID SUMMARY

Lario Oil & Gas Co.

33-14s-32w Logan Co. KS

301 S Market St.
Wichita KS 67202

Corinne # 4-33

Job Ticket: 55701

DST#: 3

ATTN: Steve Davis

Test Start: 2014.01.26 @ 05:22:00

Mud and Cushion Information

Mud Type: Gel Chem

Cushion Type:

Oil API:

36 deg API

Mud Weight: 9.00 lb/gal

Cushion Length:

ft

Water Salinity:

29000 ppm

Viscosity: 50.00 sec/qt

Cushion Volume:

bbf

Water Loss: 7.19 in³

Gas Cushion Type:

Resistivity: 0.00 ohm.m

Gas Cushion Pressure:

psig

Salinity: 3000.00 ppm

Filter Cake: 1.00 inches

Recovery Information

Recovery Table

Length ft	Description	Volume bbf
126.00	Ocg & Mcw 2o 3g 45m 50w	1.767
348.00	Ocg & Mcw 2o 10g 30m 58w	4.882
126.00	Ocg & Wcm 4o 14g 27w 55m	1.767
159.00	Cgo 50g 50o	2.230
0.00	Gravity=36 GIP=186	0.000
0.00	Rw .148@120=29000	0.000

Total Length: 759.00 ft

Total Volume: 10.646 bbf

Num Fluid Samples: 0

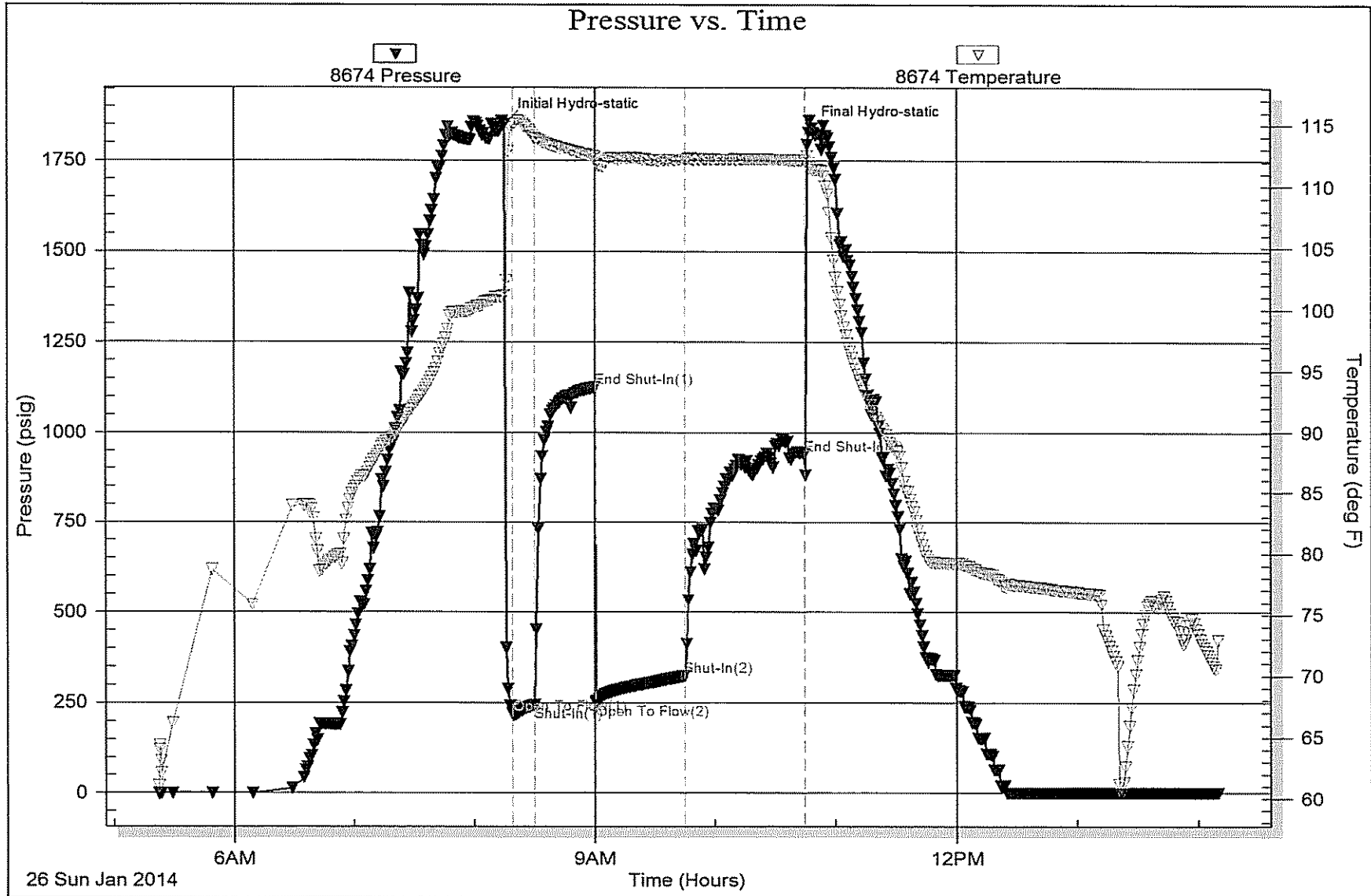
Num Gas Bombs: 0

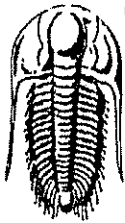
Serial #:

Laboratory Name:

Laboratory Location:

Recovery Comments: GIP=186





TRILOBITE TESTING, INC.

DRILL STEM TEST REPORT

Lario Oil & Gas Co.

301 S Market St.
Wichita KS 67202

ATTN: Steve Davis

33-14s-32w Logan Co. KS

Corinne # 4-33

Job Ticket: 55702

DST#: 4

Test Start: 2014.01.27 @ 04:30:00

GENERAL INFORMATION:

Formation: **Lansing "K & L"**

Deviated: No Whipstock: ft (KB)

Time Tool Opened: 07:24:18

Time Test Ended: 12:59:32

Test Type: Conventional Bottom Hole (Reset)

Tester: Cornelio Landa III

Unit No: 72

Interval: 3936.00 ft (KB) To 4005.00 ft (KB) (TVD)

Total Depth: 4005.00 ft (KB) (TVD)

Hole Diameter: 7.88 inches Hole Condition: Good

Reference Elevations: 2714.00 ft (KB)

2702.00 ft (CF)

KB to GR/CF: 12.00 ft

Serial #: 8355 Outside

Press@RunDepth: 101.88 psig @ 3939.00 ft (KB)

Start Date: 2014.01.27

End Date: 2014.01.27

Start Time: 04:30:05

End Time: 12:59:32

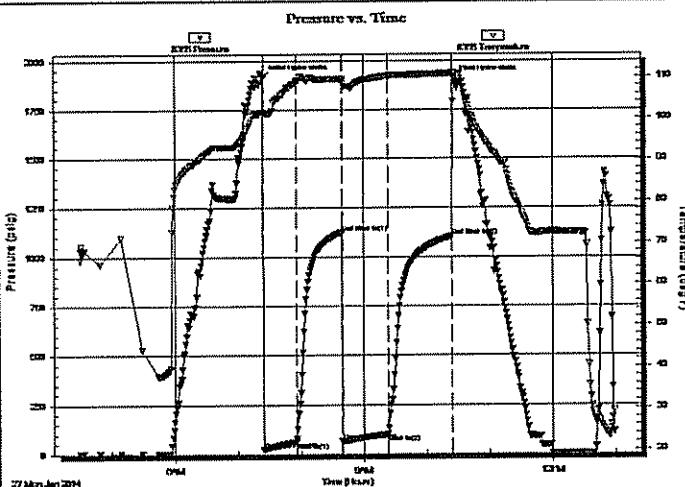
Capacity: 8000.00 psig

Last Calib.: 2014.01.27

Time On Btm: 2014.01.27 @ 07:23:48

Time Off Btm: 2014.01.27 @ 10:25:47

TEST COMMENT: IF: Weak surface Blow-Built to 1/2 in. Blow
IS: Bled off-w eak surfaced blow back return-Died in 20 min.
FF: 7 in. of blow
FS: Bled off in 2 min.-Weak surface blow back return-Died in 15 min.



PRESSURE SUMMARY

Time (Min.)	Pressure (psig)	Temp (deg F)	Annotation
0	1911.27	101.60	Initial Hydro-static
1	22.32	101.25	Open To Flow (1)
32	62.05	108.77	Shut-In(1)
76	1120.89	109.46	End Shut-In(1)
76	66.43	109.10	Open To Flow (2)
120	101.88	110.35	Shut-In(2)
180	1103.43	110.90	End Shut-In(2)
182	1904.12	110.84	Final Hydro-static

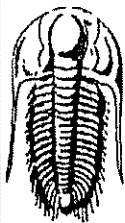
Recovery

Length (ft)	Description	Volume (bbl)
157.00	Gocm 15g 25o 60m	2.20
42.00	Cgo 15g 85o	0.59
0.00	GIP=242	0.00

* Recovery from multiple tests

Gas Rates

	Choke (inches)	Pressure (psig)	Gas Rate (Mcf/d)



**TRILOBITE
TESTING, INC.**

DRILL STEM TEST REPORT

FLUID SUMMARY

Lario Oil & Gas Co.

33-14s-32w Logan Co. KS

301 S Market St.
Wichita KS 67202

Corinne # 4-33

Job Ticket: 55702

DST#: 4

ATTN: Steve Davis

Test Start: 2014.01.27 @ 04:30:00

Mud and Cushion Information

Mud Type: Gel Chem

Cushion Type:

Oil Apt:

32 deg API

Mud Weight: 9.00 lb/gal

Cushion Length:

ft

Water Salinity:

ppm

Viscosity: 56.00 sec/qt

Cushion Volume:

bbbl

Water Loss: 7.20 in³

Gas Cushion Type:

Resistivity: 0.00 ohm.m

Gas Cushion Pressure:

psig

Salinity: 3000.00 ppm

Filter Cake: 1.00 inches

Recovery Information

Recovery Table

Length ft	Description	Volume bbbl
157.00	Gocm 15g 25o 60m	2.202
42.00	Cgo 15g 85o	0.589
0.00	GIP=242	0.000

Total Length: 199.00 ft

Total Volume: 2.791 bbl

Num Fluid Samples: 0

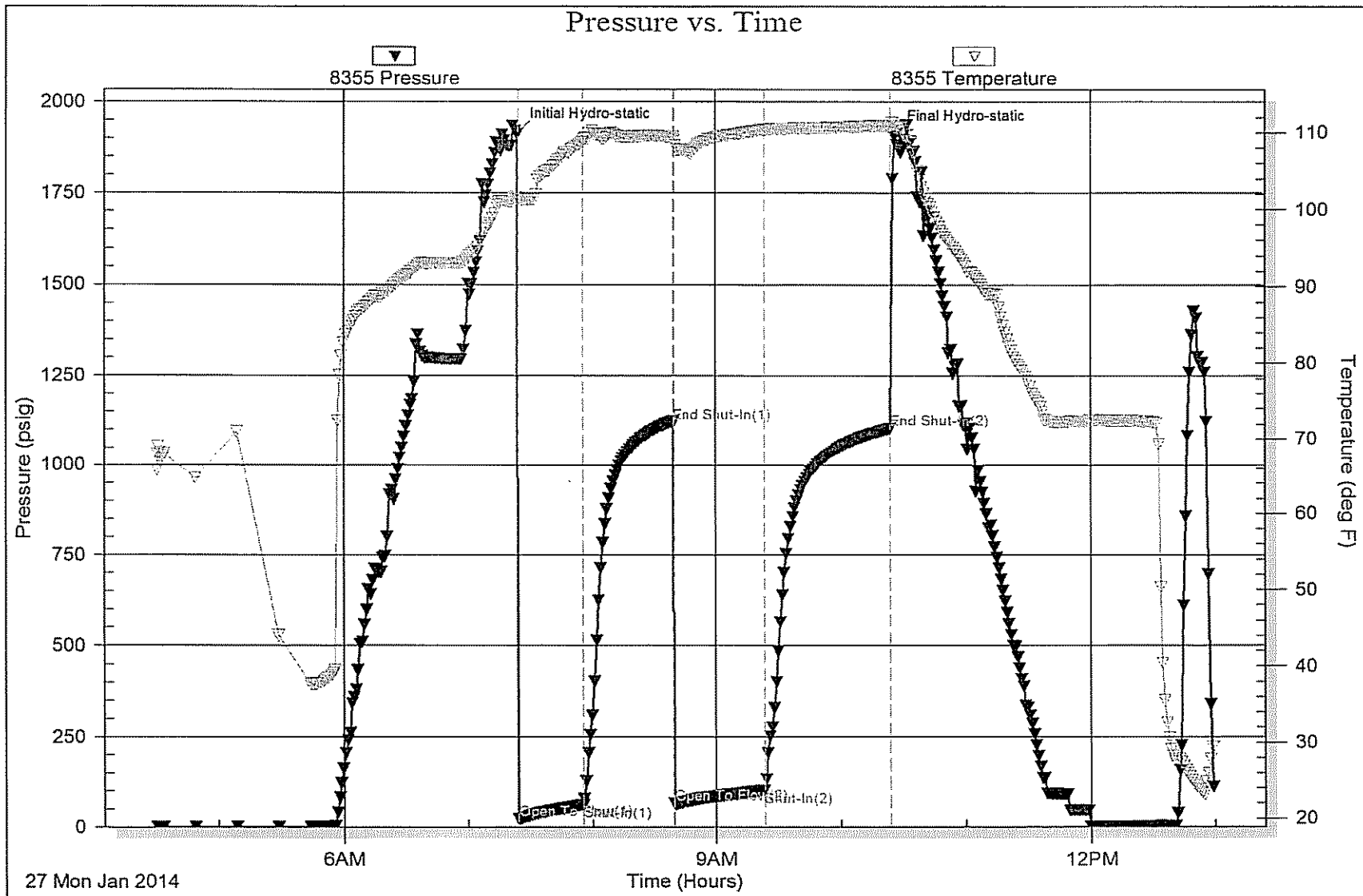
Num Gas Bombs: 0

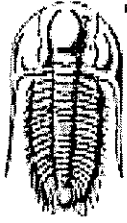
Serial #:

Laboratory Name:

Laboratory Location:

Recovery Comments:





**TRILOBITE
TESTING, INC**

DRILL STEM TEST REPORT

Lario Oil & Gas Co.

301 S Market St.
Wichita KS 67202

ATTN: Steve Davis

33-14s-32w Logan Co. KS

Corinne # 4-33

Job Ticket: 55703

DST#: 5

Test Start: 2014.01.27 @ 23:51:00

GENERAL INFORMATION:

Formation: **Marmaton 'A'**

Deviated: No Whipstock: ft (KB)

Time Tool Opened: 02:16:15

Time Test Ended: 07:27:15

Test Type: Conventional Bottom Hole (Reset)

Tester: Cornelio Landa III

Unit No: 72

Interval: **4052.00 ft (KB) To 4080.00 ft (KB) (TVD)**

Total Depth: **4080.00 ft (KB) (TVD)**

Hole Diameter: **7.88 inches** Hole Condition: Good

Reference Elevations: **2714.00 ft (KB)**

2702.00 ft (CF)

KB to GR/CF: **12.00 ft**

Serial #: **8674** Inside

Press@RunDepth: **19.76 psig @ 4055.00 ft (KB)**

Start Date: **2014.01.27**

End Date:

2014.01.28

Capacity: **8000.00 psig**

Last Calib.:

2014.01.28

Start Time: **23:51:05**

End Time:

07:27:14

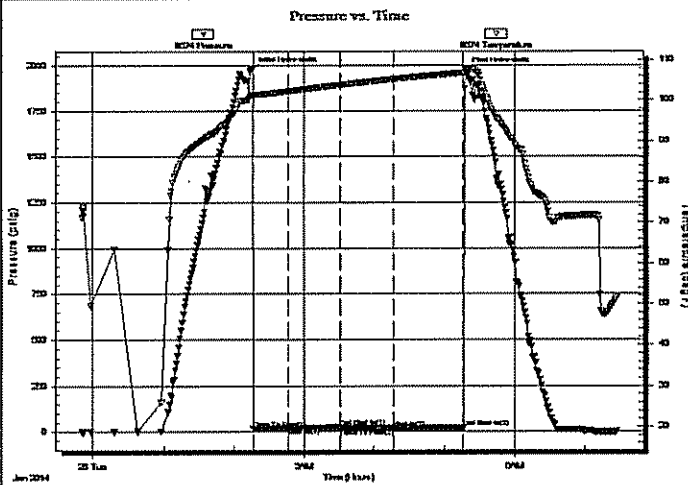
Time On Btm:

2014.01.28 @ 02:16:00

Time Off Btm:

2014.01.28 @ 05:18:15

TEST COMMENT: IF: Steady 1/2 in. Blow
IS: Bled off- No return
FF: No Blow
FS: No Return



PRESSURE SUMMARY

Time (Min.)	Pressure (psig)	Temp (deg F)	Annotation
0	1975.01	101.52	Initial Hydro-static
1	16.60	100.47	Open To Flow (1)
31	20.07	102.23	Shut-In(1)
75	25.52	103.82	End Shut-In(1)
76	19.55	103.82	Open To Flow (2)
121	19.76	105.22	Shut-In(2)
181	24.06	106.82	End Shut-In(2)
183	1970.82	107.63	Final Hydro-static

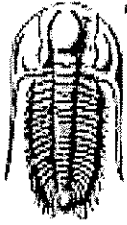
Recovery

Length (ft)	Description	Volume (bbl)
1.00	Mud 100m w/ Trace of oil	0.01

* Recovery from multiple tests

Gas Rates

	Choke (inches)	Pressure (psig)	Gas Rate (Mcf/d)



**TRILOBITE
TESTING, INC**

DRILL STEM TEST REPORT

FLUID SUMMARY

Larlo Oil & Gas Co.

33-14s-32w Logan Co. KS

301 S Market St.
Wichita KS 67202

Corinne # 4-33

Job Ticket: 55703

DST#: 5

ATTN: Steve Davis

Test Start: 2014.01.27 @ 23:51:00

Mud and Cushion Information

Mud Type: Gel Chem

Cushion Type:

Oil API:

deg API

Mud Weight: 9.00 lb/gal

Cushion Length:

ft

Water Salinity:

ppm

Viscosity: 56.00 sec/qt

Cushion Volume:

bbl

Water Loss: 9.18 in³

Gas Cushion Type:

Resistivity: 0.00 ohm.m

Gas Cushion Pressure:

psig

Salinity: 3000.00 ppm

Filler Cake: 1.00 inches

Recovery Information

Recovery Table

Length ft	Description	Volume bbl
1.00	Mud 100mw / Trace of oil	0.014

Total Length: 1.00 ft

Total Volume: 0.014 bbl

Num Fluid Samples: 0

Num Gas Bombs: 0

Serial #:

Laboratory Name:

Laboratory Location:

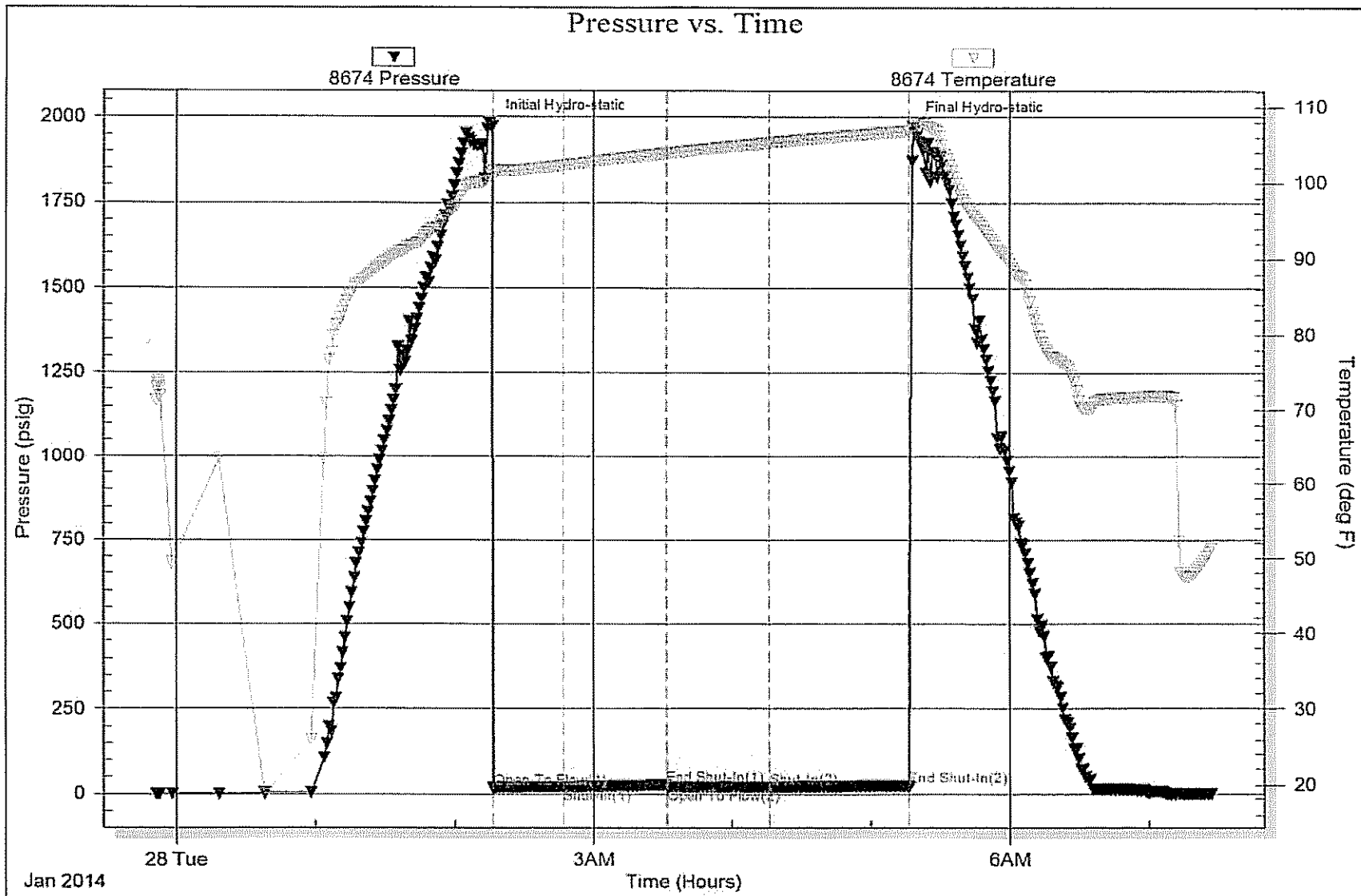
Recovery Comments:

Serial #: 8674

Inside Lario Oil & Gas Co.

Corinne # 4-33

DST Test Number: 5





TRILOBITE TESTING, INC.

DRILL STEM TEST REPORT

Lario Oil & Gas Co.

33-14s-32w Logan Co. KS

301 S Market St.
Wichita KS 67202

Corinne # 4-33

Job Ticket: 50246

DST#: 6

ATTN: Steve Davis

Test Start: 2014.01.29 @ 04:54:00

GENERAL INFORMATION:

Formation: **Johnson**

Deviated: No Whipstock: ft (KB)

Time Tool Opened: 07:47:10

Time Test Ended: 13:32:40

Test Type: Conventional Bottom Hole (Reset)

Tester: Will MacLean

Unit No: 72

Interval: 4236.00 ft (KB) To 4285.00 ft (KB) (TVD)

Reference Elevations: 2714.00 ft (KB)

Total Depth: 4285.00 ft (KB) (TVD)

2702.00 ft (CF)

Hole Diameter: 7.88 inches Hole Condition: Good

KB to GR/CF: 12.00 ft

Serial #: 8674 Inside

Press@RunDepth: 43.69 psig @ 4237.00 ft (KB)

Capacity: 8000.00 psig

Start Date: 2014.01.29

End Date:

2014.01.29

Last Calib.: 2014.01.29

Start Time: 04:54:00

End Time:

13:32:40

Time On Btm: 2014.01.29 @ 07:46:55

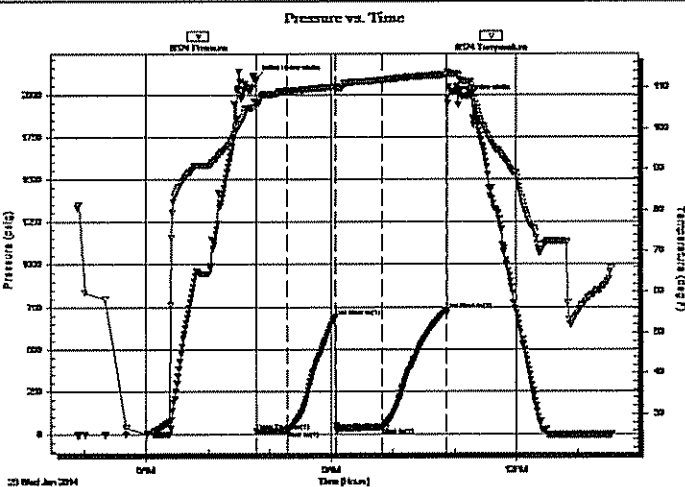
Time Off Btm: 2014.01.29 @ 10:53:09

TEST COMMENT: IF- Weak Surface Blow Built to 4 1/4"

ISI- No Blow

FF- Weak Surface Blow Built to 11 1/2"

FSI- No Blow



PRESSURE SUMMARY

Time (Min.)	Pressure (psig)	Temp (deg F)	Annotation
0	2091.05	106.59	Initial Hydro-static
1	18.89	105.97	Open To Flow (1)
31	26.74	109.21	Shut-In(1)
78	690.90	110.15	End Shut-In(1)
78	26.62	109.93	Open To Flow (2)
123	43.69	111.77	Shut-In(2)
186	732.26	113.04	End Shut-In(2)
187	1977.55	113.77	Final Hydro-static

Recovery

Length (ft)	Description	Volume (bbt)
62.00	GOCM 9%g 24%oil 64%m	0.87
5.00	GOCM 3%g 12%oil 85%m	0.07
0.00	367' of GIP	0.00

* Recovery from multiple tests

Gas Rates

	Choke (inches)	Pressure (psig)	Gas Rate (Mcf/d)



**TRILOBITE
TESTING, INC.**

DRILL STEM TEST REPORT

FLUID SUMMARY

Lario Oil & Gas Co.

33-14s-32w Logan Co. KS

301 S Market St.
Wichita KS 67202

Corinne # 4-33

Job Ticket: 50246

DST#: 6

ATTN: Steve Davis

Test Start: 2014.01.29 @ 04:54:00

Mud and Cushion Information

Mud Type: Gel Chem	Cushion Type:	Oil API:	deg API
Mud Weight: 9.00 lb/gal	Cushion Length: ft	Water Salinity:	ppm
Viscosity: 41.00 sec/qt	Cushion Volume: bbl		
Water Loss: 7.11 in ³	Gas Cushion Type:		
Resistivity: 0.00 ohm.m	Gas Cushion Pressure: psig		
Salinity: 1800.00 ppm			
Filter Cake: 1.00 inches			

Recovery Information

Recovery Table

Length ft	Description	Volume bbl
62.00	GOCM 9%g 24%oil 64%m	0.870
5.00	GOCM 3%g 12%oil 85%m	0.070
0.00	367' of GIP	0.000

Total Length: 67.00 ft Total Volume: 0.940 bbl

Num Fluid Samples: 0

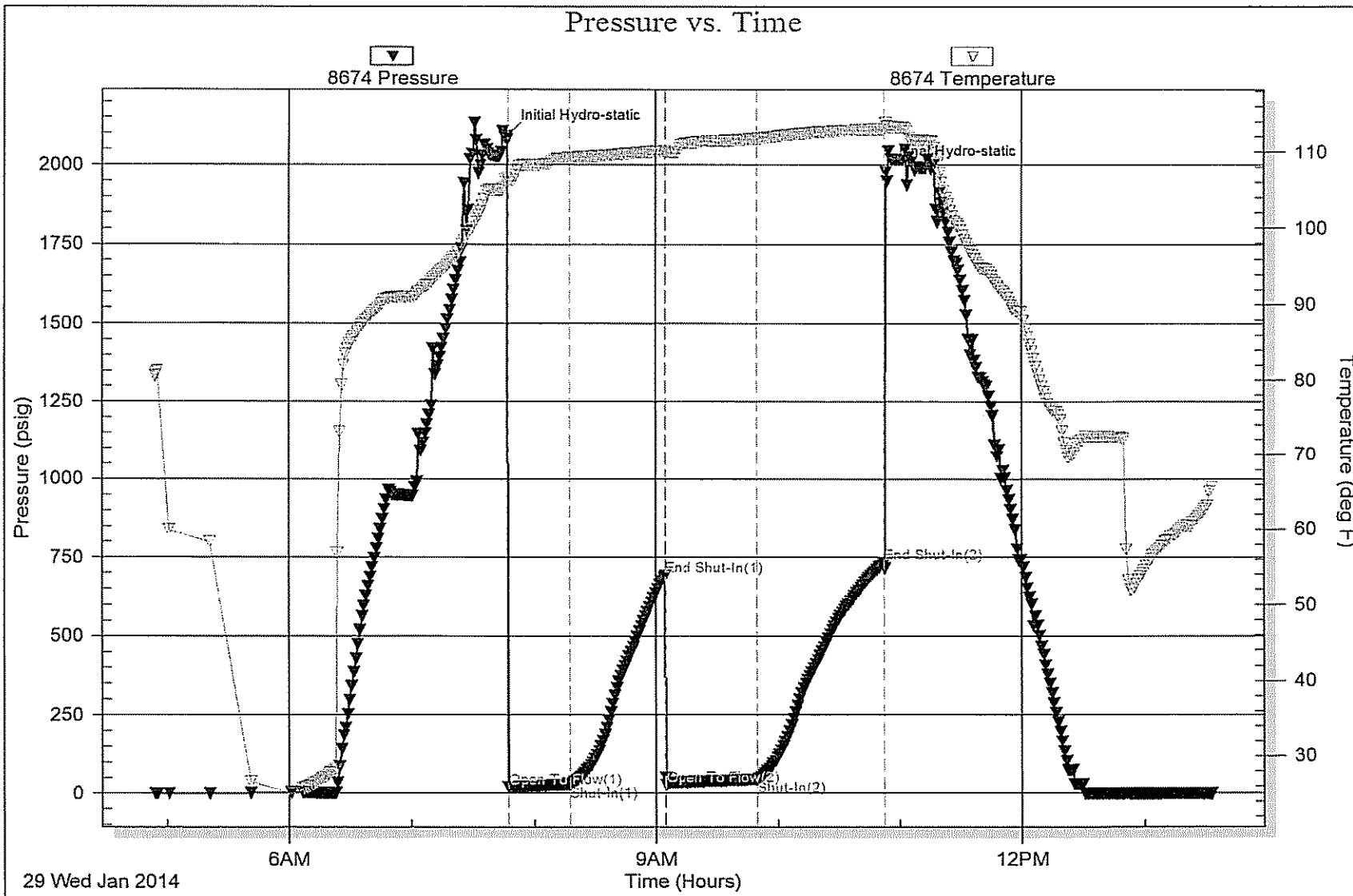
Num Gas Bombs: 0

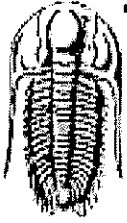
Serial #:

Laboratory Name:

Laboratory Location:

Recovery Comments:





**TRILOBITE
TESTING, INC**

DRILL STEM TEST REPORT

Lario Oil & Gas Co.

33-14s-32w Logan Co. KS

301 S Market St.
Wichita KS 67202

Corinne # 4-33

Job Ticket: 50247

DST#: 7

ATTN: Steve Davis

Test Start: 2014.01.29 @ 23:58:00

GENERAL INFORMATION:

Formation: Basal Penn Sand
Deviated: No Whipstock: ft (KB)
Time Tool Opened: 02:29:25
Time Test Ended: 09:04:25

Test Type: Conventional Bottom Hole (Reset)
Tester: Will MacLean
Unit No: 72

Interval: 4279.00 ft (KB) To 4340.00 ft (KB) (TVD)
Total Depth: 4340.00 ft (KB) (TVD)
Hole Diameter: 7.88 inches Hole Condition: Good

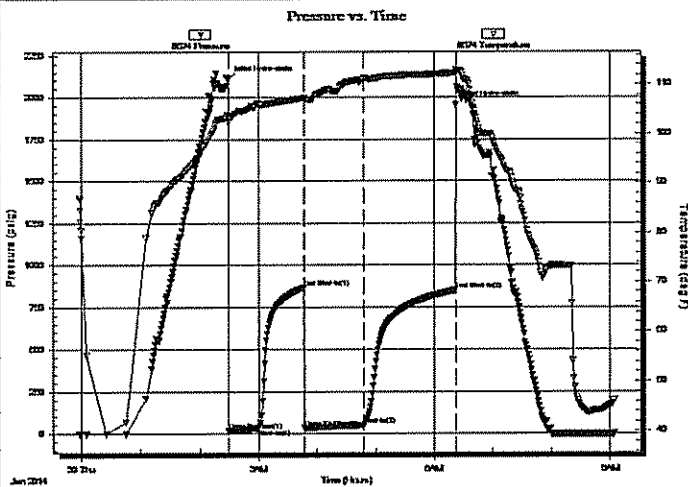
Reference Elevations: 2714.00 ft (KB)
2702.00 ft (CF)
KB to GR/CF: 12.00 ft

Serial #: 8674 Inside

Press@RunDepth: 51.44 psig @ 4280.00 ft (KB)
Start Date: 2014.01.29 End Date: 2014.01.30
Start Time: 23:58:00 End Time: 09:04:25

Capacity: 8000.00 psig
Last Calib.: 2014.01.30
Time On Btm: 2014.01.30 @ 02:29:10
Time Off Btm: 2014.01.30 @ 06:22:24

TEST COMMENT: IF- Weak Surface Blow Built to Built to 1 1/2"
IS- No Blow
FF- Weak Surface Blow Built to 2"
FS- No Blow



PRESSURE SUMMARY

Time (Min.)	Pressure (psig)	Temp (deg F)	Annotation
0	2106.86	103.68	Initial Hydro-static
1	16.65	102.35	Open To Flow (1)
31	31.11	106.19	Shut-In(1)
78	866.24	107.25	End Shut-In(1)
78	33.35	106.83	Open To Flow (2)
139	51.44	111.24	Shut-In(2)
233	849.19	112.35	End Shut-In(2)
234	1956.12	112.79	Final Hydro-static

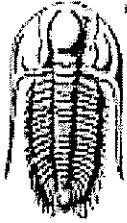
Recovery

Length (ft)	Description	Volume (bbl)
1.00	100%oil	0.01
9.00	WOCM 4%w 14%oil 82%m	0.13
62.00	OWCM 3%oil 4%w 93%m	0.87

* Recovery from multiple tests

Gas Rates

	Choke (inches)	Pressure (psig)	Gas Rate (Mcf/d)



TRILOBITE
TESTING, INC

DRILL STEM TEST REPORT

FLUID SUMMARY

Lario Oil & Gas Co.

33-14s-32w Logan Co. KS

301 S Market St.
Wichita KS 67202

Corinne # 4-33

Job Ticket: 50247

DST#: 7

ATTN: Steve Davis

Test Start: 2014.01.29 @ 23:58:00

Mud and Cushion Information

Mud Type: Gel Chem

Cushion Type:

Oil API:

deg API

Mud Weight: 9.00 lb/gal

Cushion Length:

ft

Water Salinity:

ppm

Viscosity: 53.00 sec/qt

Cushion Volume:

bbbl

Water Loss: 6.40 in³

Gas Cushion Type:

Resistivity: 0.00 ohm.m

Gas Cushion Pressure:

psig

Salinity: 3400.00 ppm

Filter Cake: 1.00 inches

Recovery Information

Recovery Table

Length ft	Description	Volume bbl
1.00	100%oil	0.014
9.00	WOCM 4%w 14%oil 82%m	0.126
62.00	OWCM 3%oil 4%w 93%m	0.870

Total Length:

72.00 ft

Total Volume:

1.010 bbl

Num Fluid Samples: 0

Num Gas Bombs: 0

Serial #:

Laboratory Name:

Laboratory Location:

Recovery Comments:

