



Pioneer Energy Services

Dual Induction Log

API No.	15-085-20,087-00-00		
Company	J & K Crude LLC		
Well	Hug No.01		
Field	Wildcat		
County	Jackson	State	Kansas
Location	2970' FSL & 2310' FWL		
Sec: 34	Twp: 8S	Rge: 15E	Other Services CNL/CDL MEL

Permanent Datum	Ground Level	Elevation 1166	K.B. 1176
Log Measured From	Kelly Bushing	10 Ft. Above Perm. Datum	D.F. 1166
Drilling Measured From	Kelly Bushing		G.L. 1166
Date	11/20/2013		
Run Number	One		
Depth Driller	3200		
Depth Logger	3199		
Bottom Logged Interval	3198		
Top Log Interval	200		
Casing Driller	8.625 @ 220		
Casing Logger	222		
Bit Size	7.875		
Type Fluid in Hole	Chemical		
Salinity,ppm CL	800		
Density / Viscosity	9.3	50	
pH / Fluid Loss	10.5	8.0	
Source of Sample	Flowline		
Rm @ Meas. Temp	.95	@ 45	
Rmf @ Meas. Temp	.71	@ 45	
Rmc @ Meas. Temp	1.28	@ 45	
Source of Rmf / Rmc	Charts		
Rm @ BHT	.4	@ 108	
Operating Rig Time	4 Hours		
Max Rec. Temp. F	108		
Equipment Number	17		
Location	Hays		
Recorded By	C. Desaire		
Witnessed By	George Petersen		

<<< Fold Here >>>

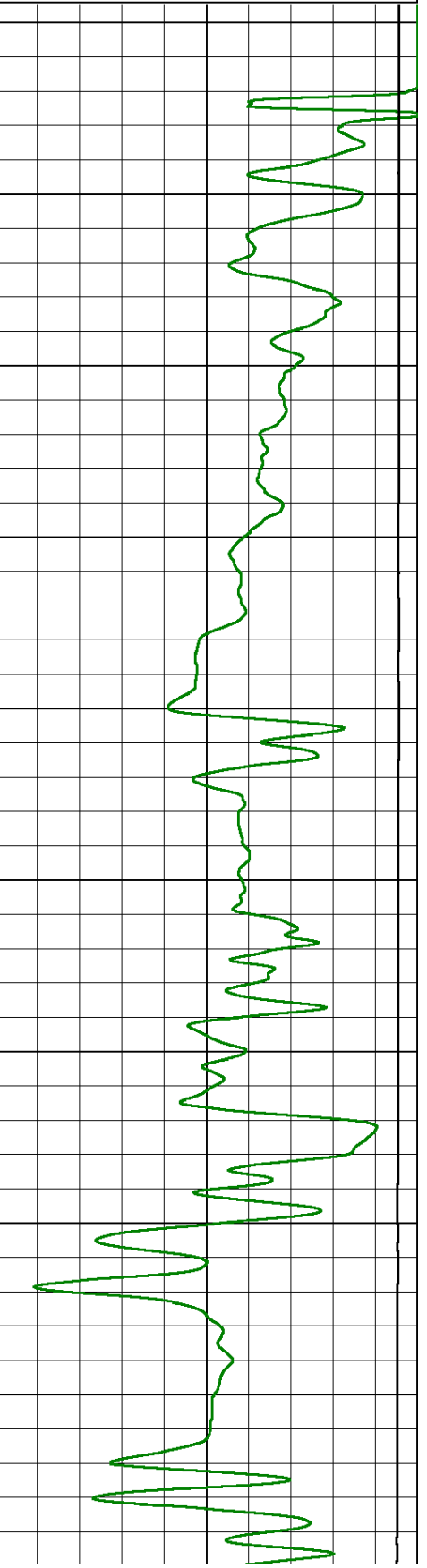
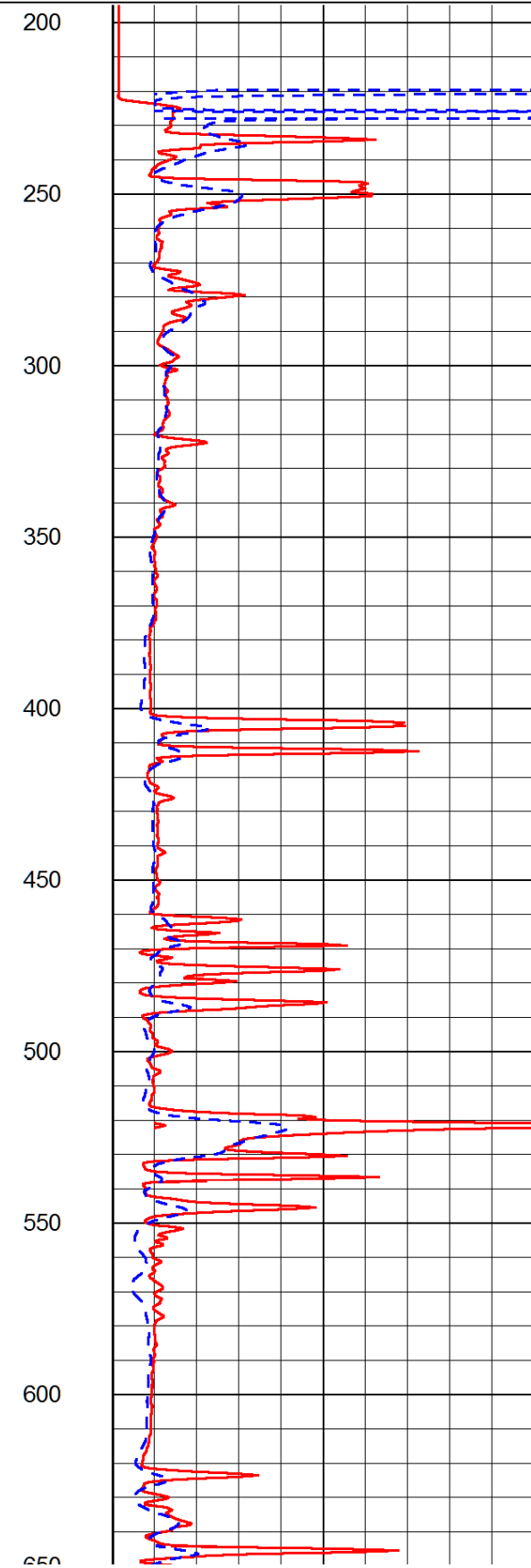
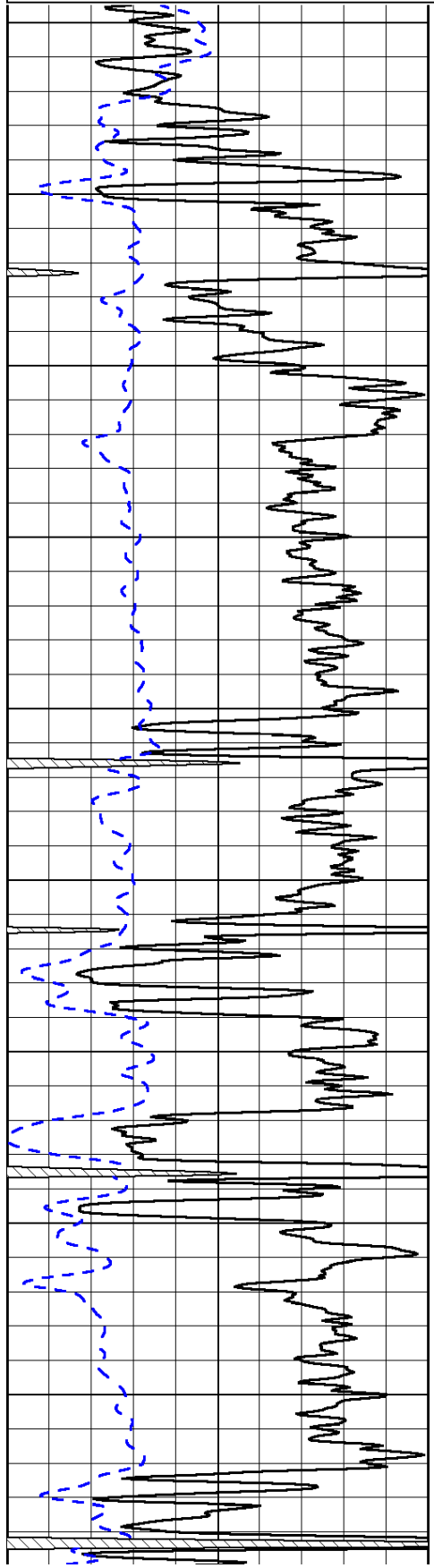
All interpretations are opinions based on inferences from electrical or other measurements and we cannot and do not guarantee the accuracy or correctness of any interpretation, and we shall not, except in the case of gross or willful negligence on our part, be liable or responsible for any loss, costs, damages, or expenses incurred or sustained by anyone resulting from any interpretation made by any of our officers, agents or employees. These interpretations are also subject to our general terms and conditions set out in our current Price Schedule.

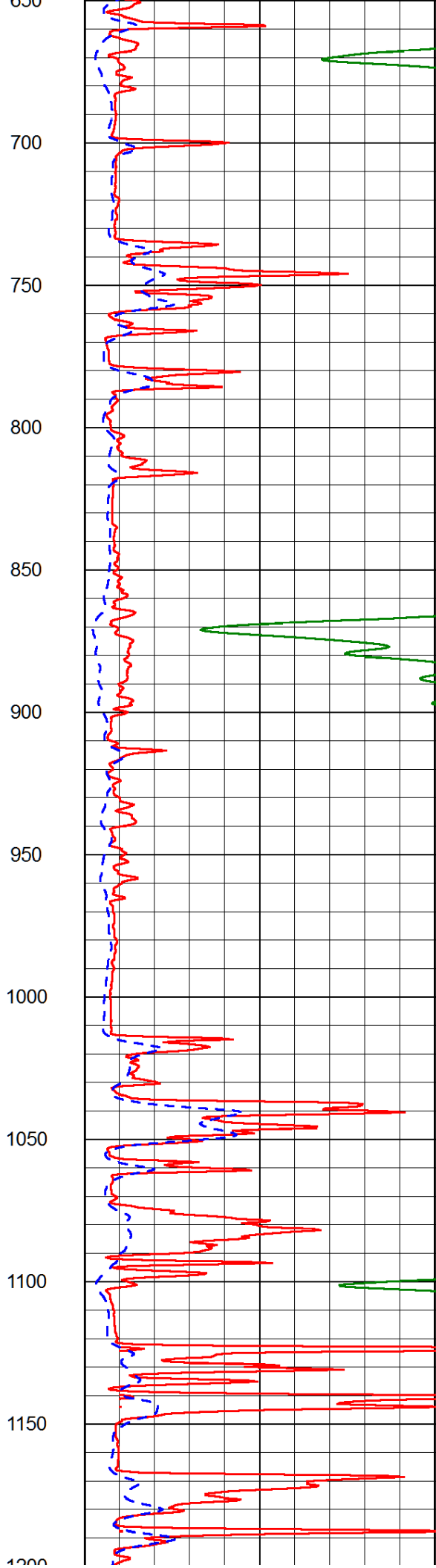
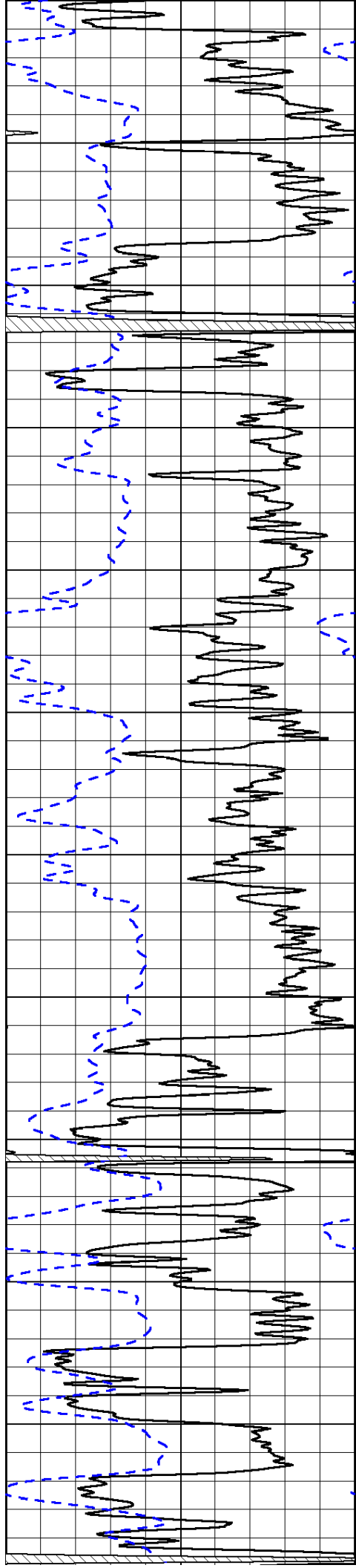
Comments

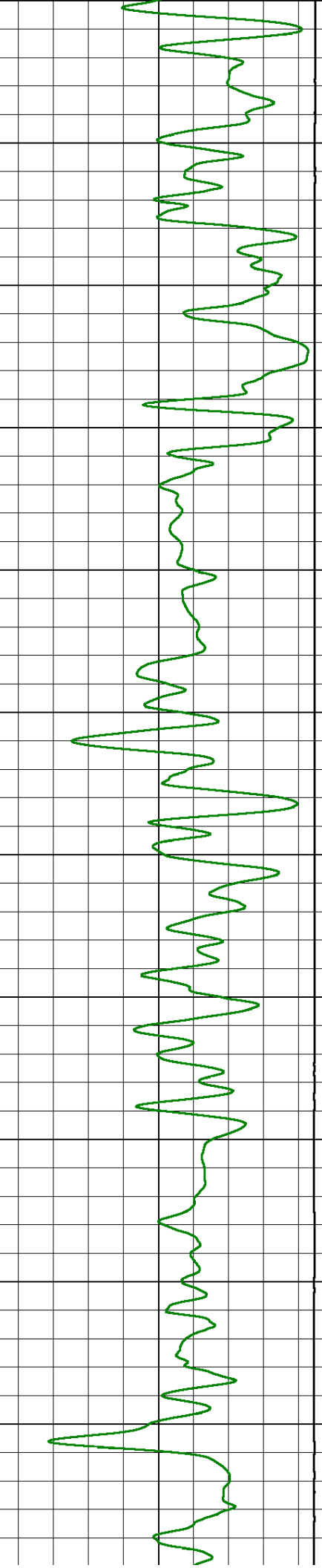
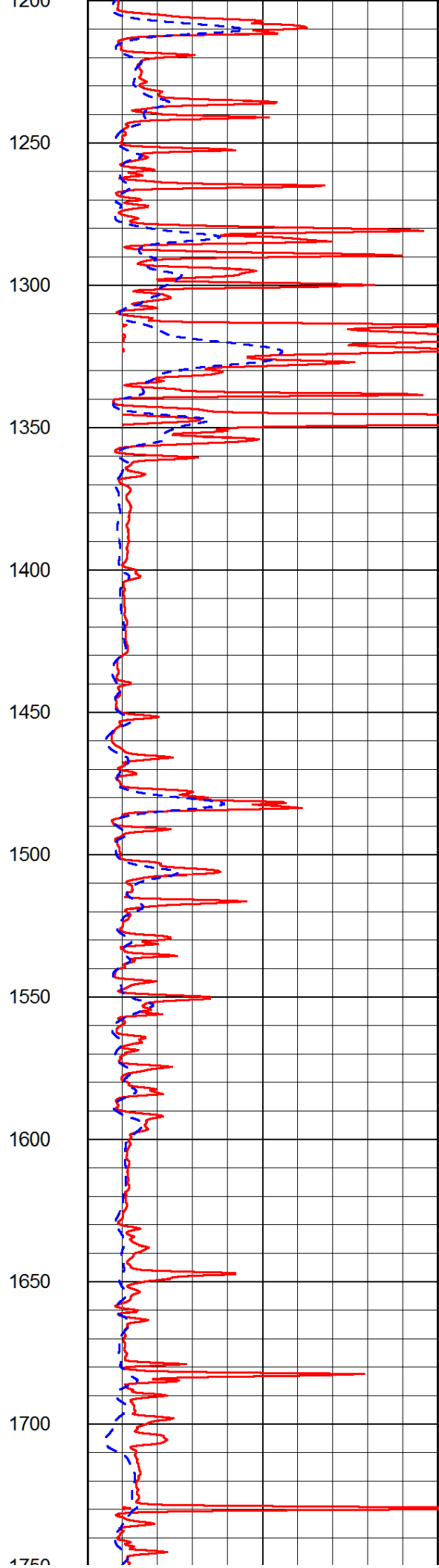
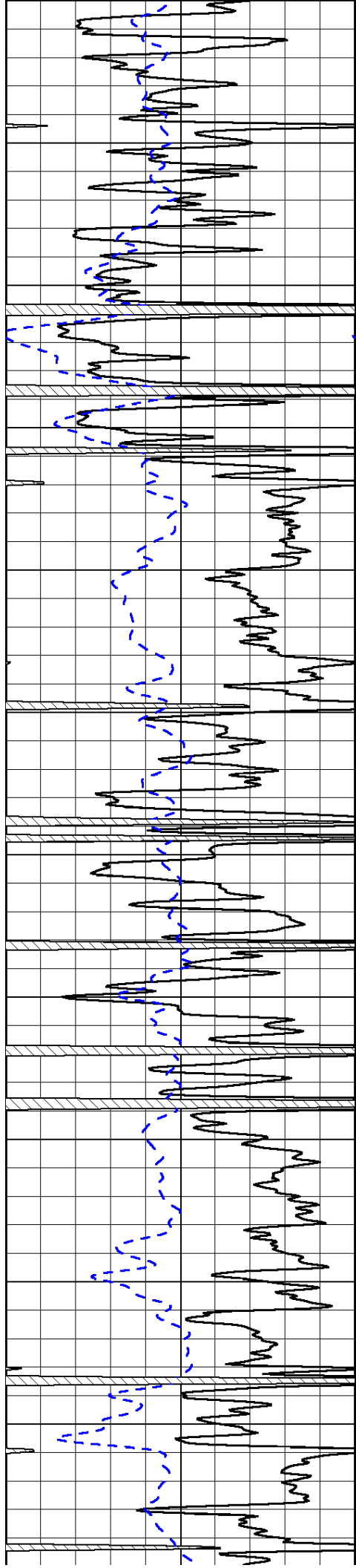
Thank you for using Log-Tech, Inc.
 (785) 625-3858
 Topeka KS, N on Hwy 75 to 142 Rd,
 1 1/4 W, 1/2 N, E Into at gate

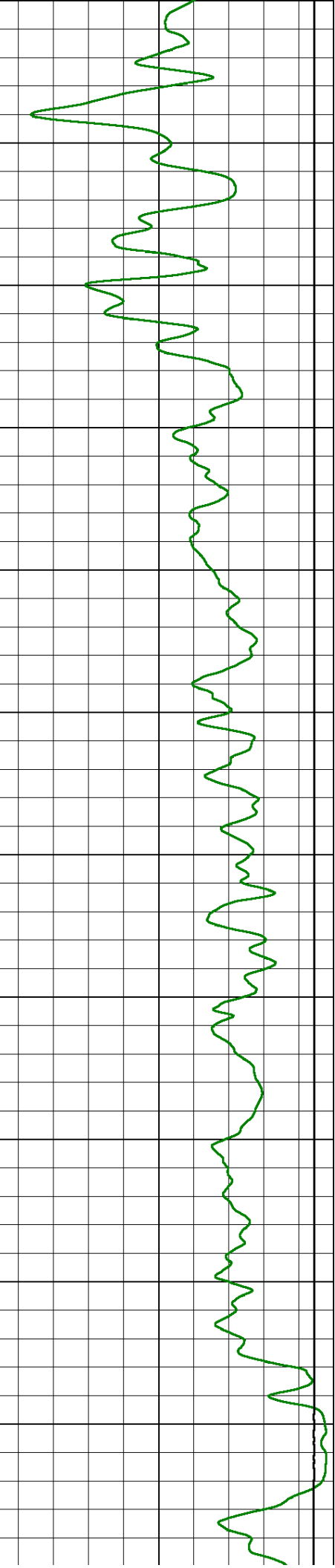
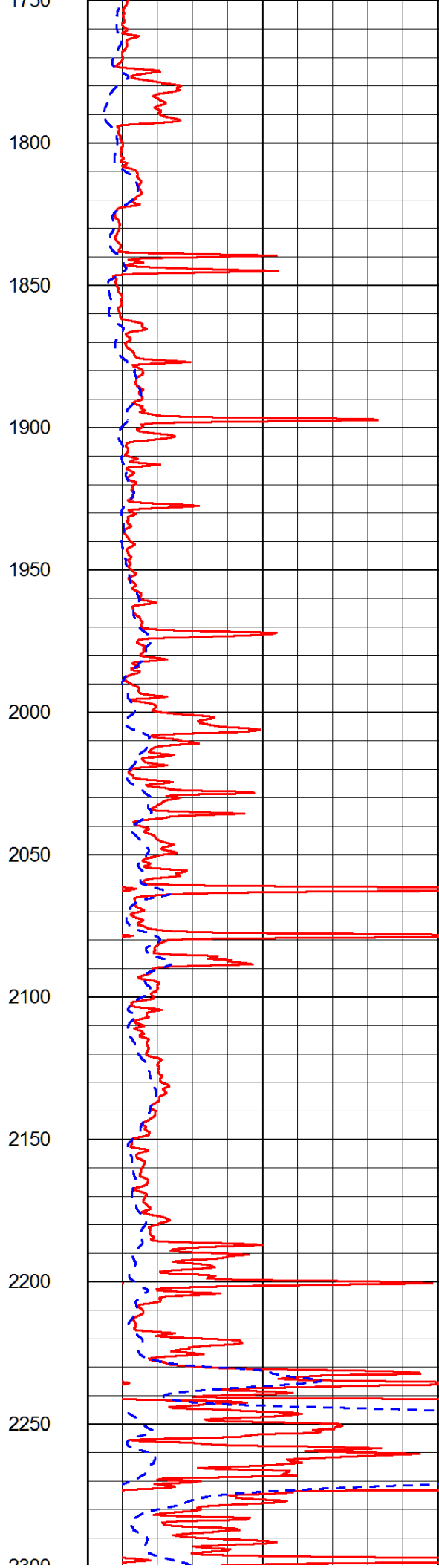
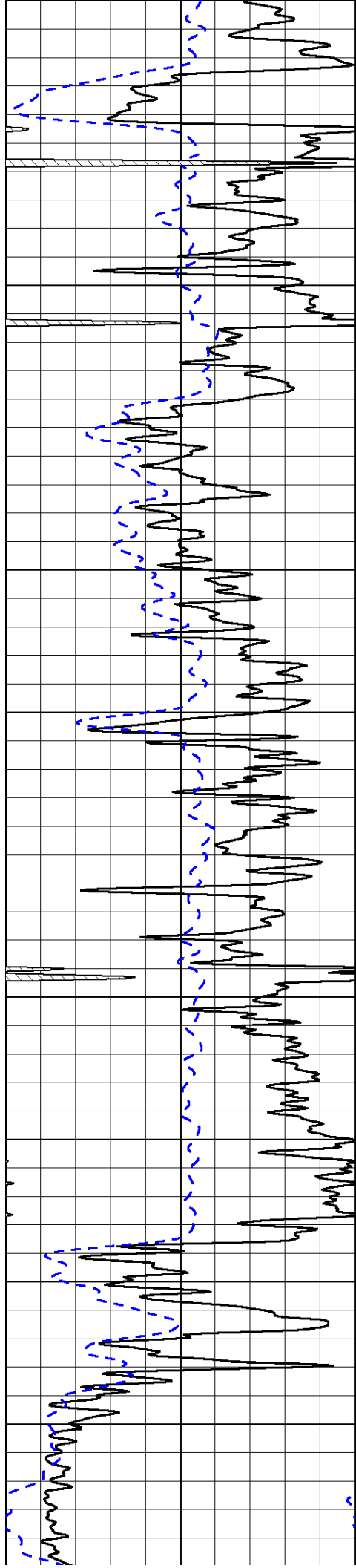
0	Gamma Ray (GAPI)	150
-200	SP (mV)	0

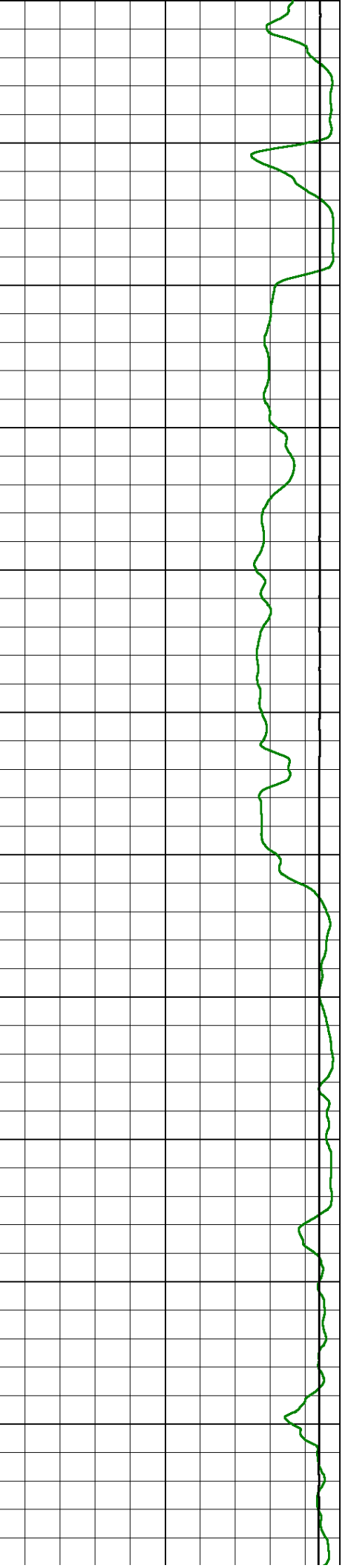
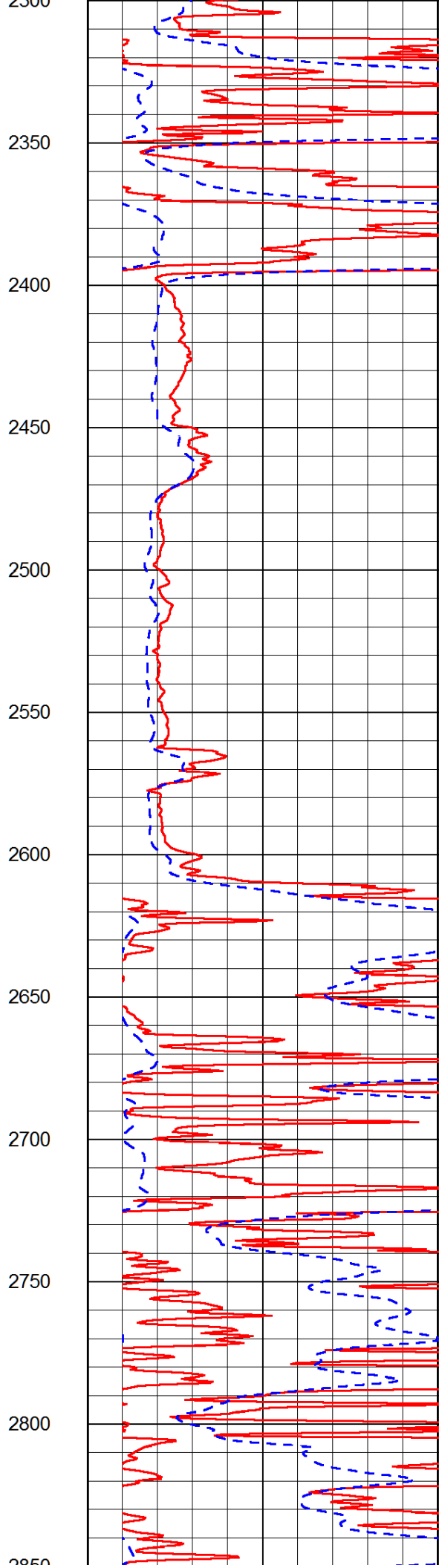
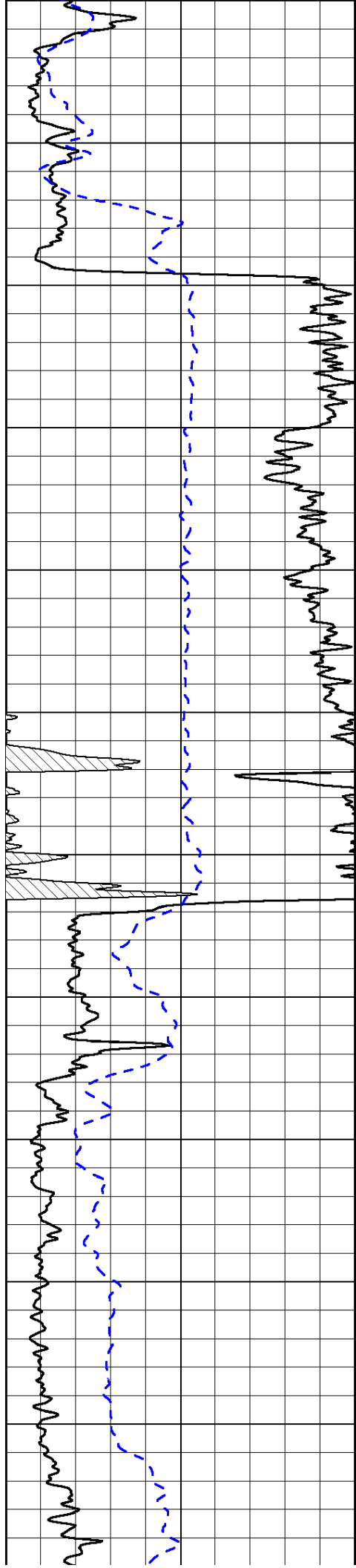
0	Shallow Resistivity (Ohm-m)	50
0	Deep Resistivity (Ohm-m)	50
1000	Conductivity (Ohm-m)	0
15000	Line Tension (lb)	0
	Shallow Resistivity (Ohm-m)	50
	Deep Resistivity (Ohm-m)	50

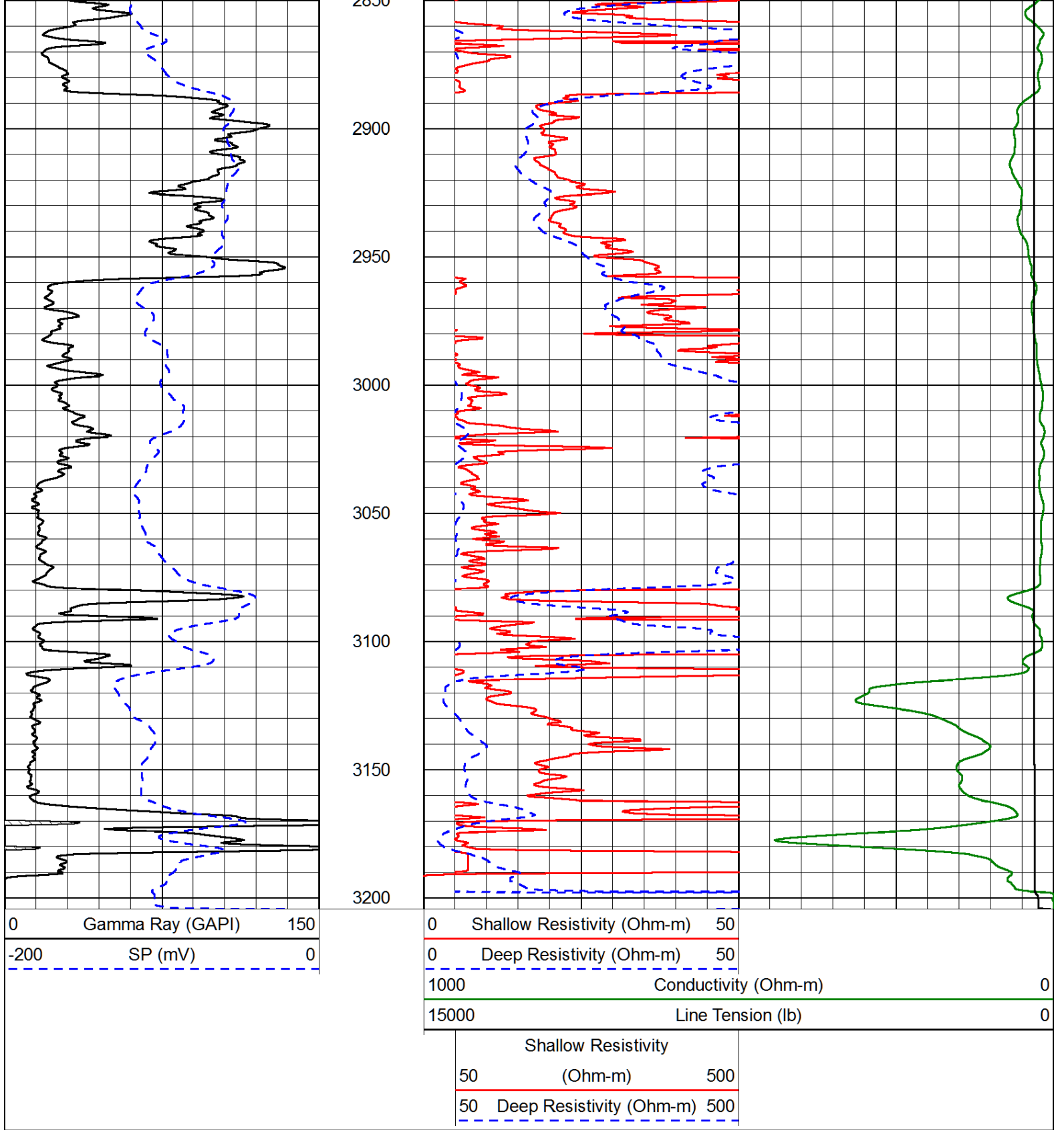




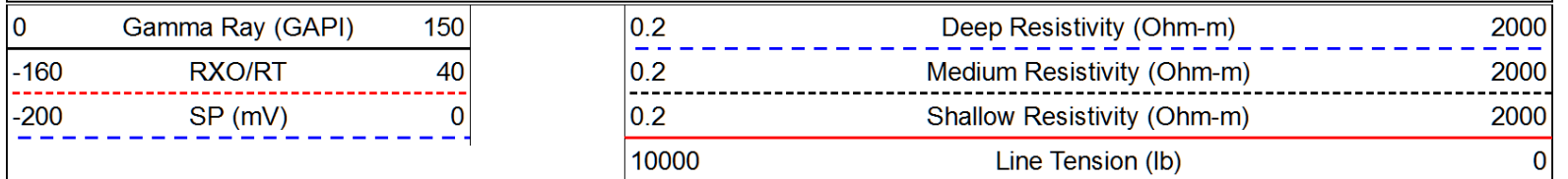


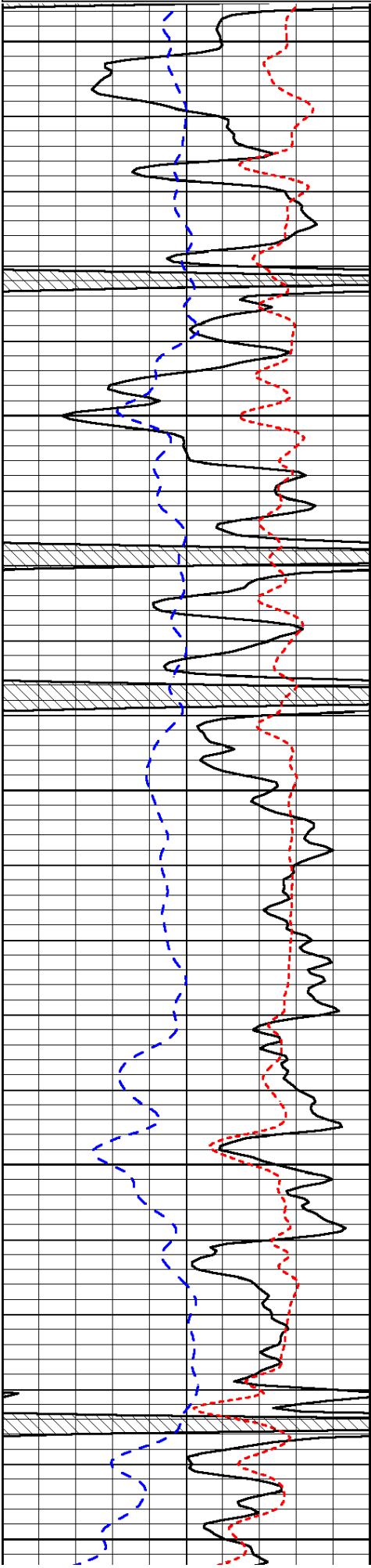




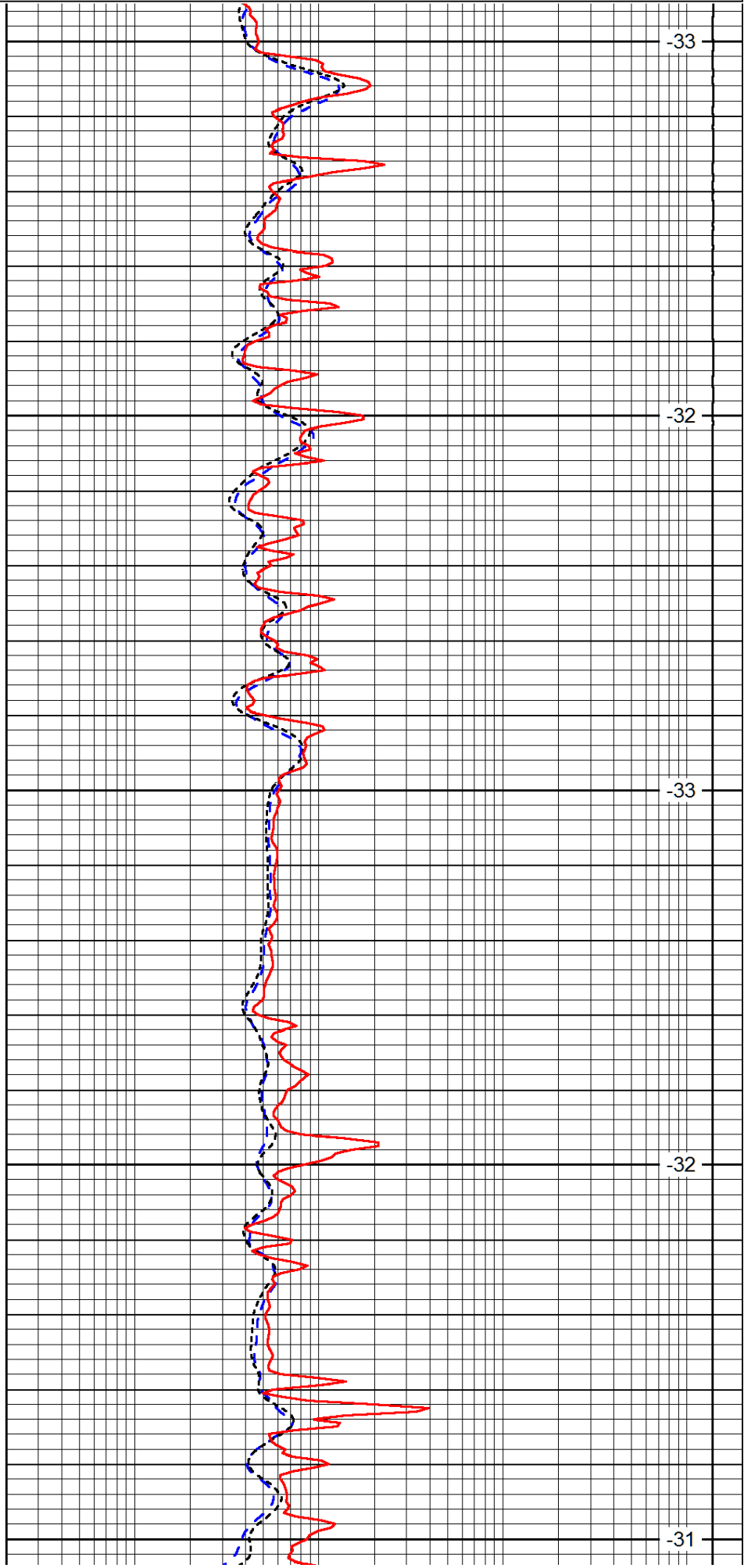


Database File: jkhd.db
 Dataset Pathname: dil/jkstk
 Presentation Format: dil
 Dataset Creation: Thu Nov 21 01:31:30 2013
 Charted by: Depth in Feet scaled 1:240

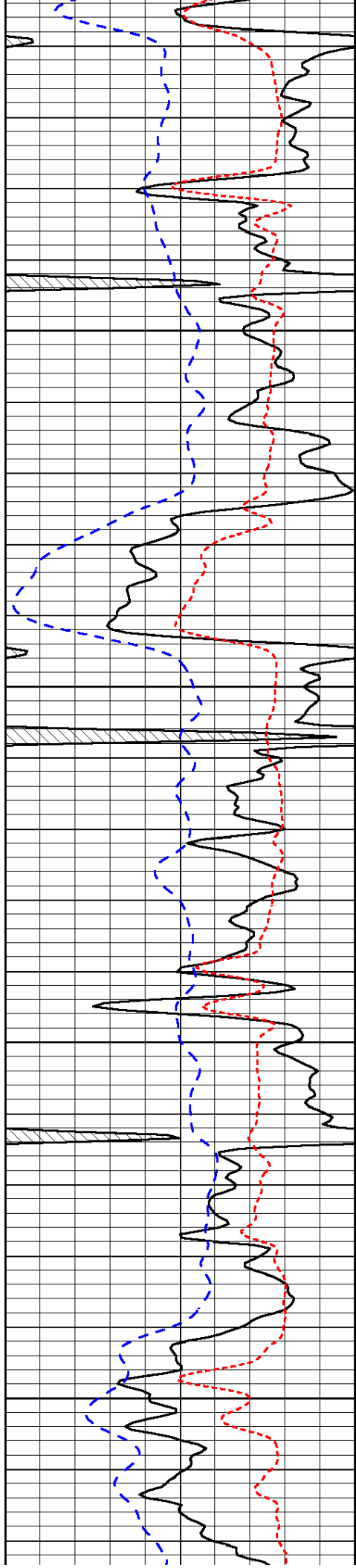




1500
1550
1600
1650
1700



-33
-32
-33
-32
-31

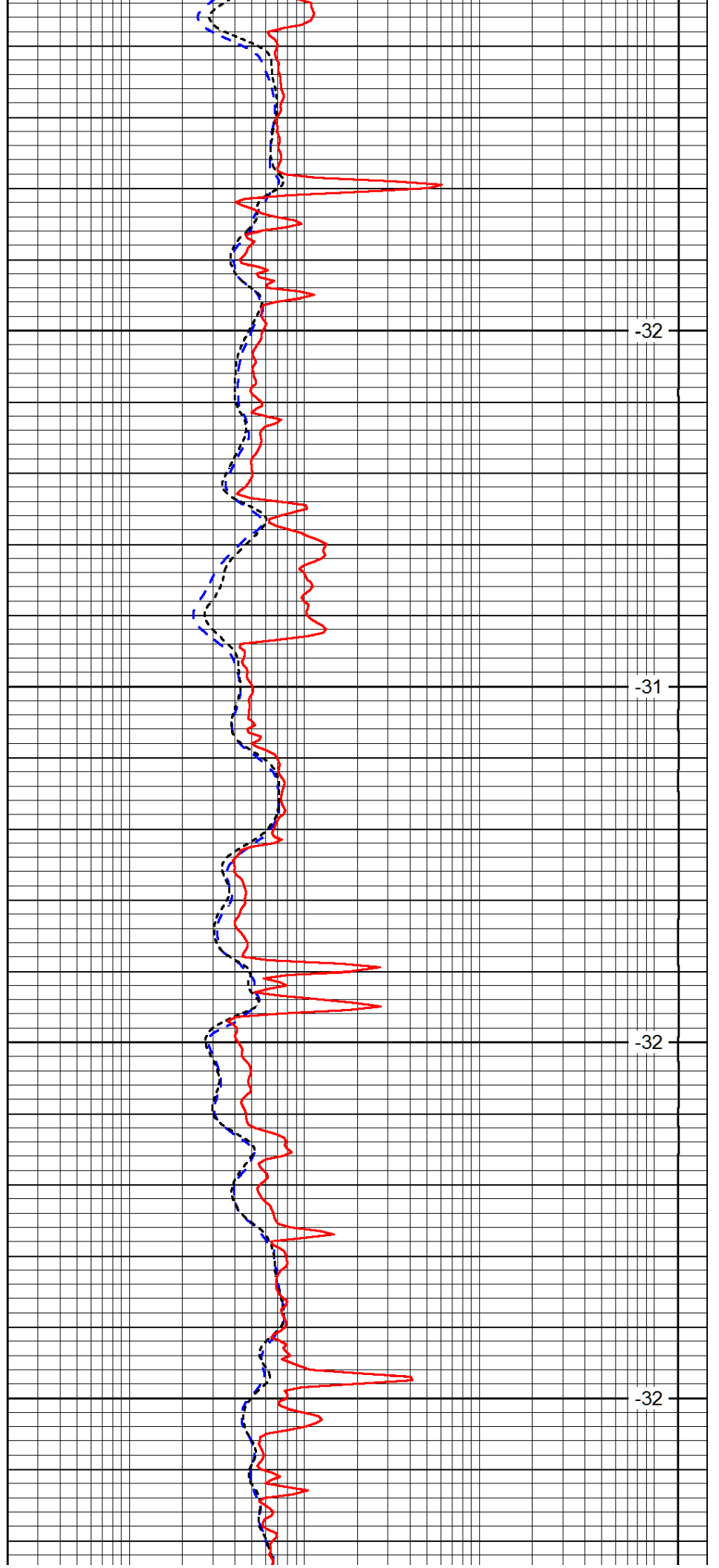


1750

1800

1850

1900

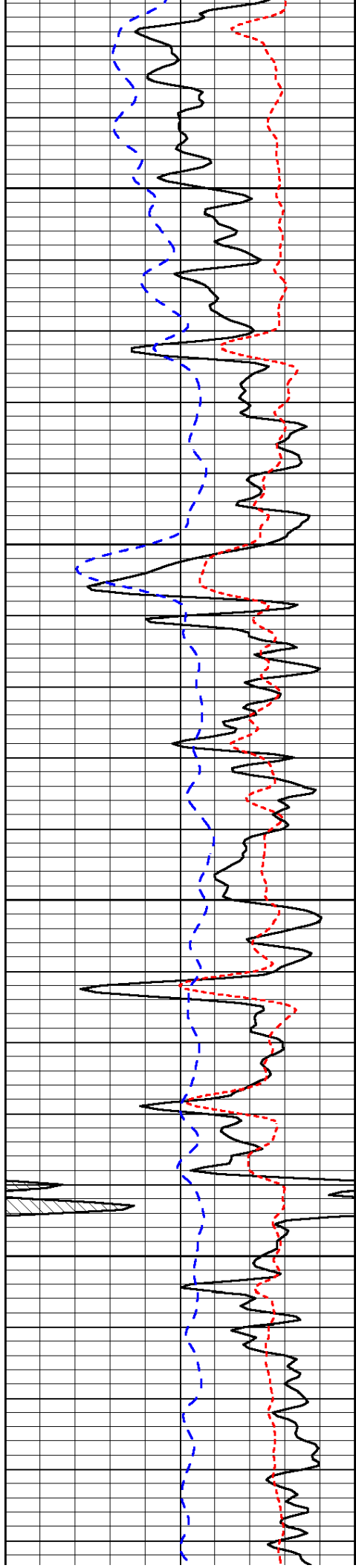


-32

-31

-32

-32



1950

-32

2000

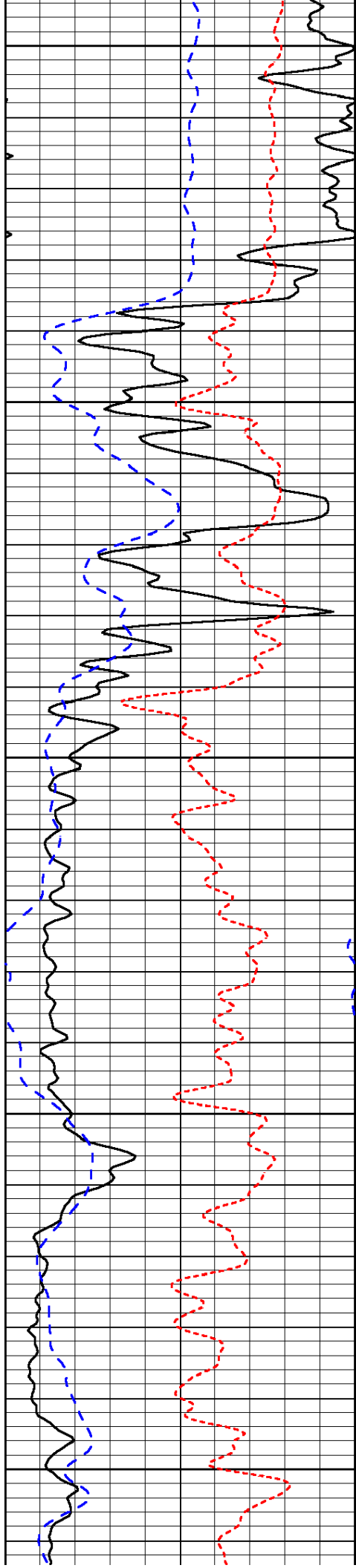
-32

2050

-32

2100

-32



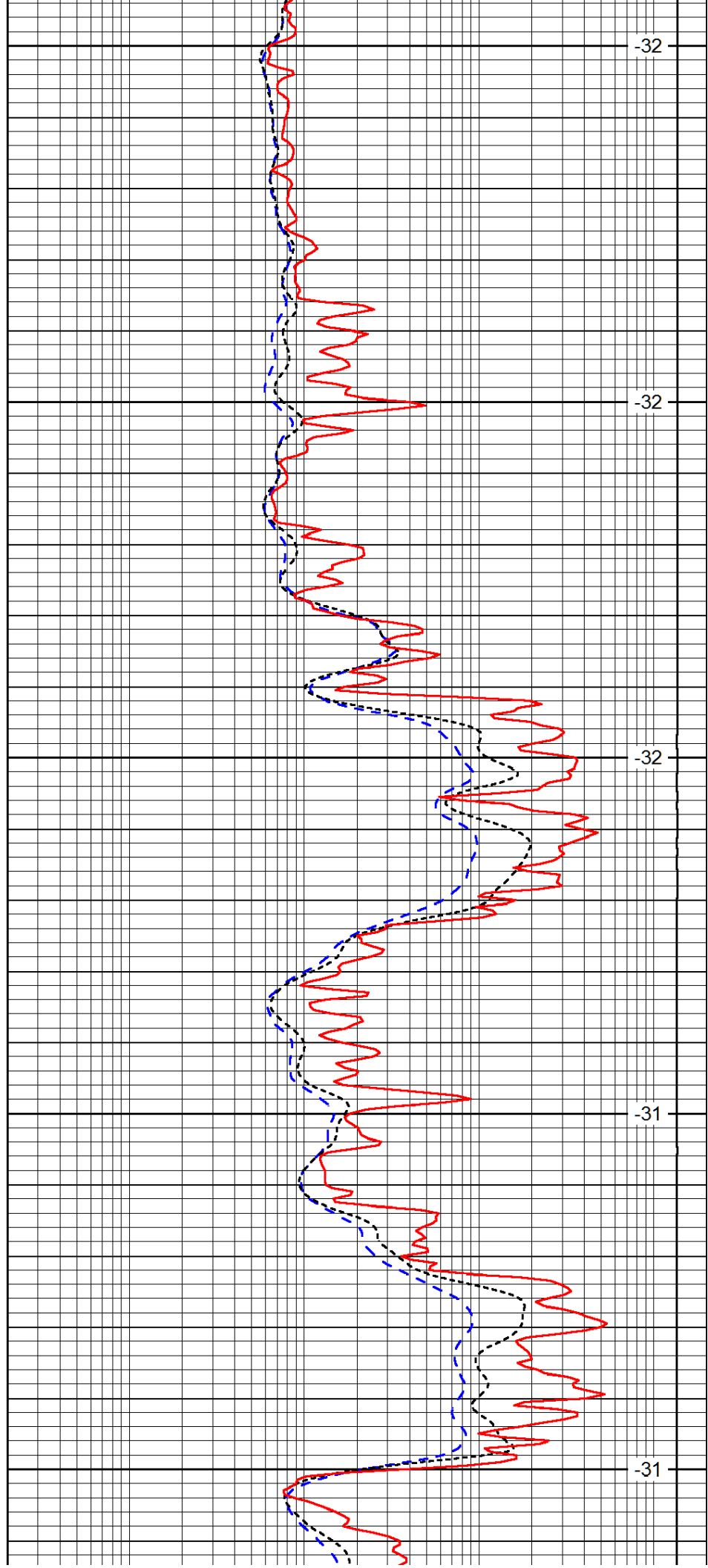
2150

2200

2250

2300

2350



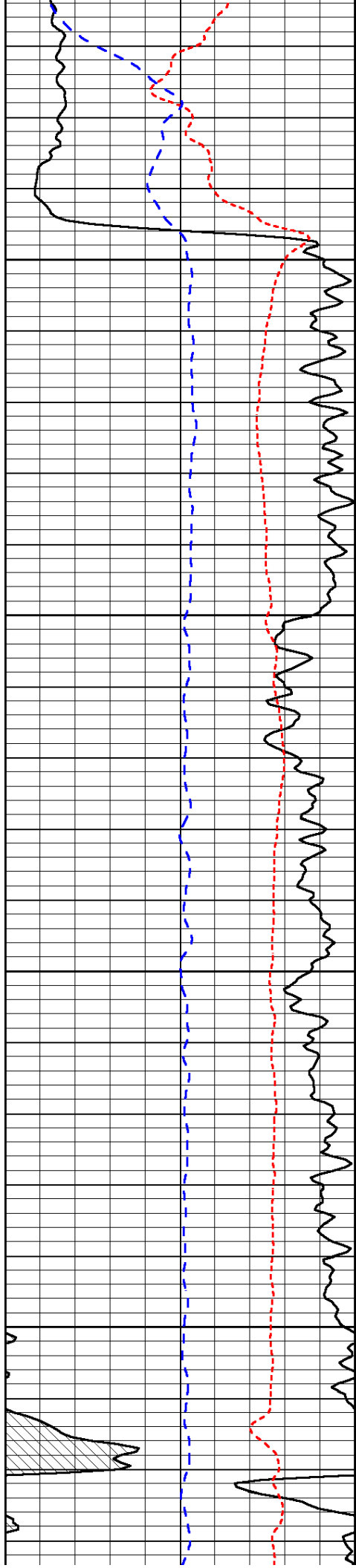
-32

-32

-32

-31

-31



2400

2450

2500

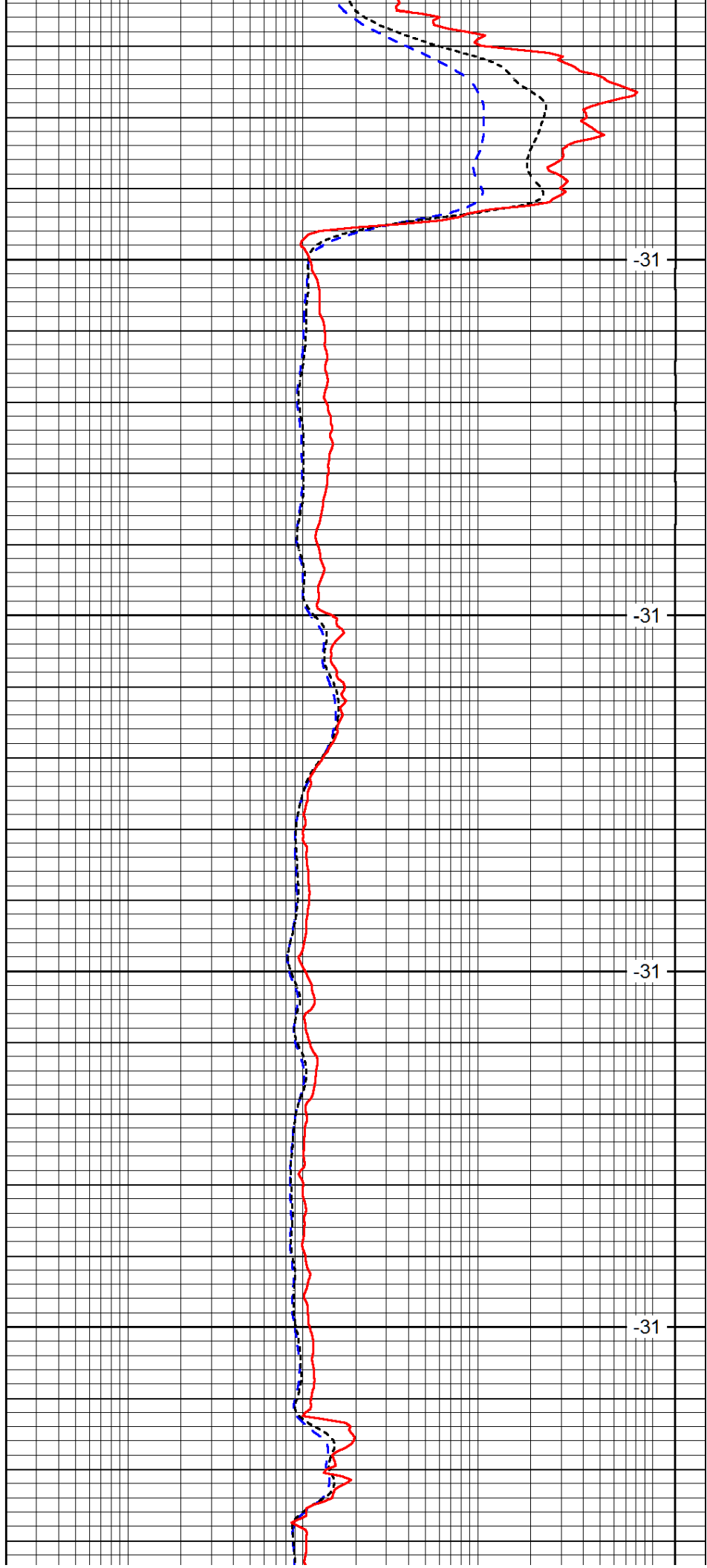
2550

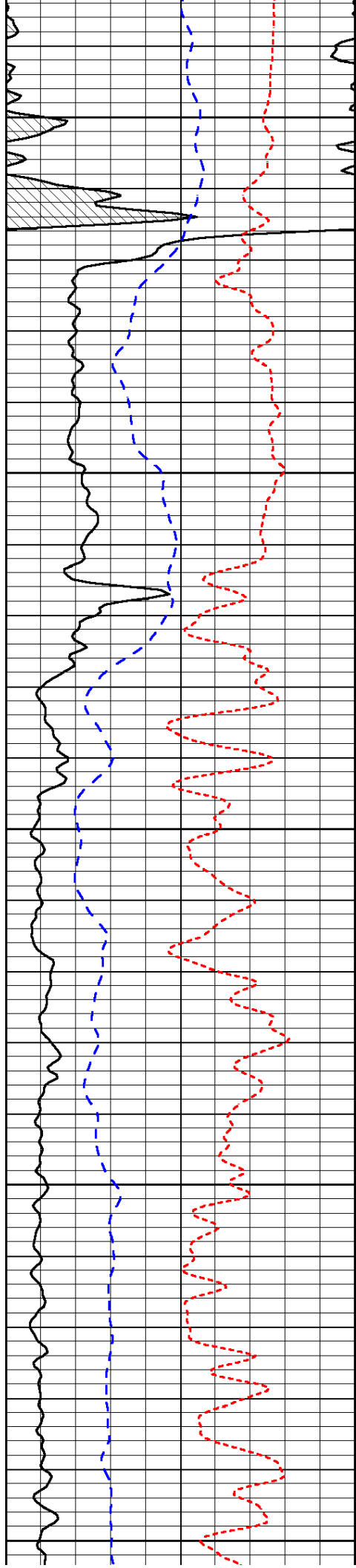
-31

-31

-31

-31





2600

2650

2700

2750

2800

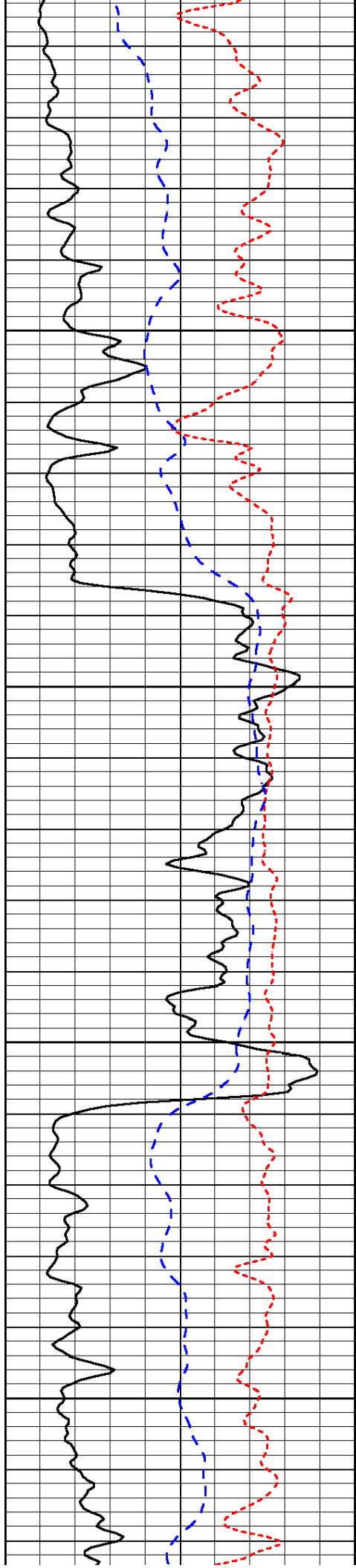
-31

-31

-31

-31

-31

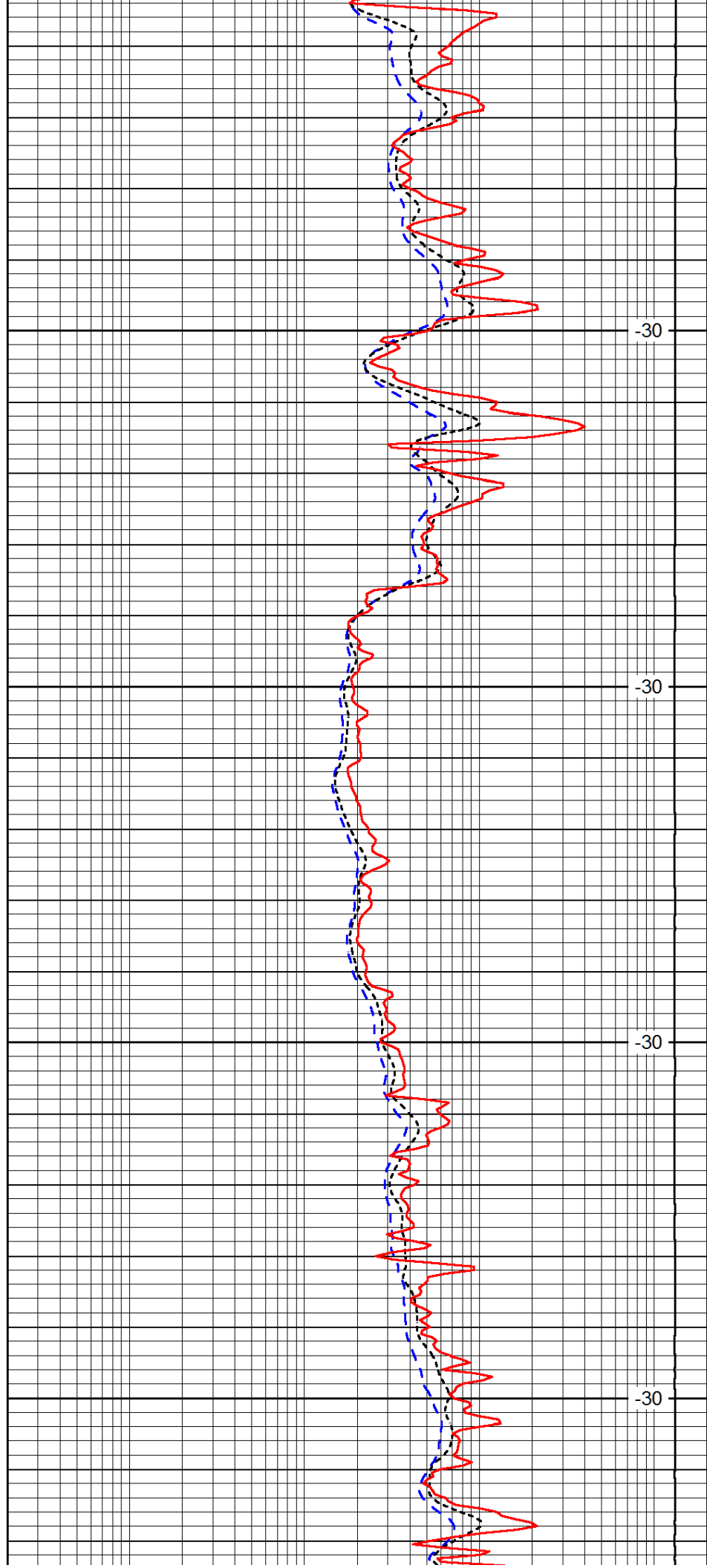


2850

2900

2950

3000

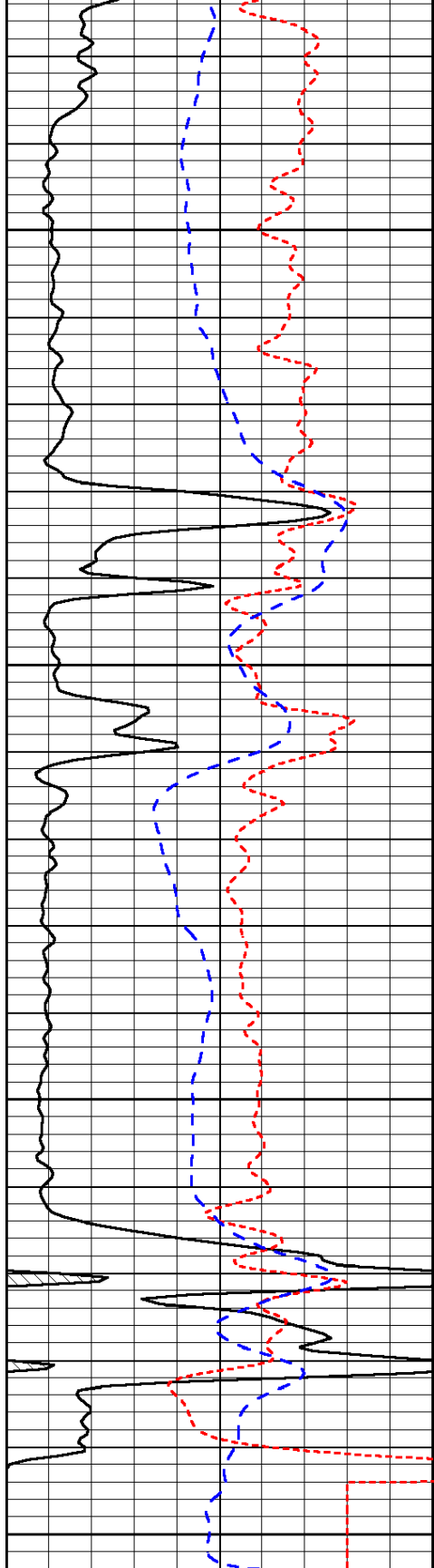


-30

-30

-30

-30



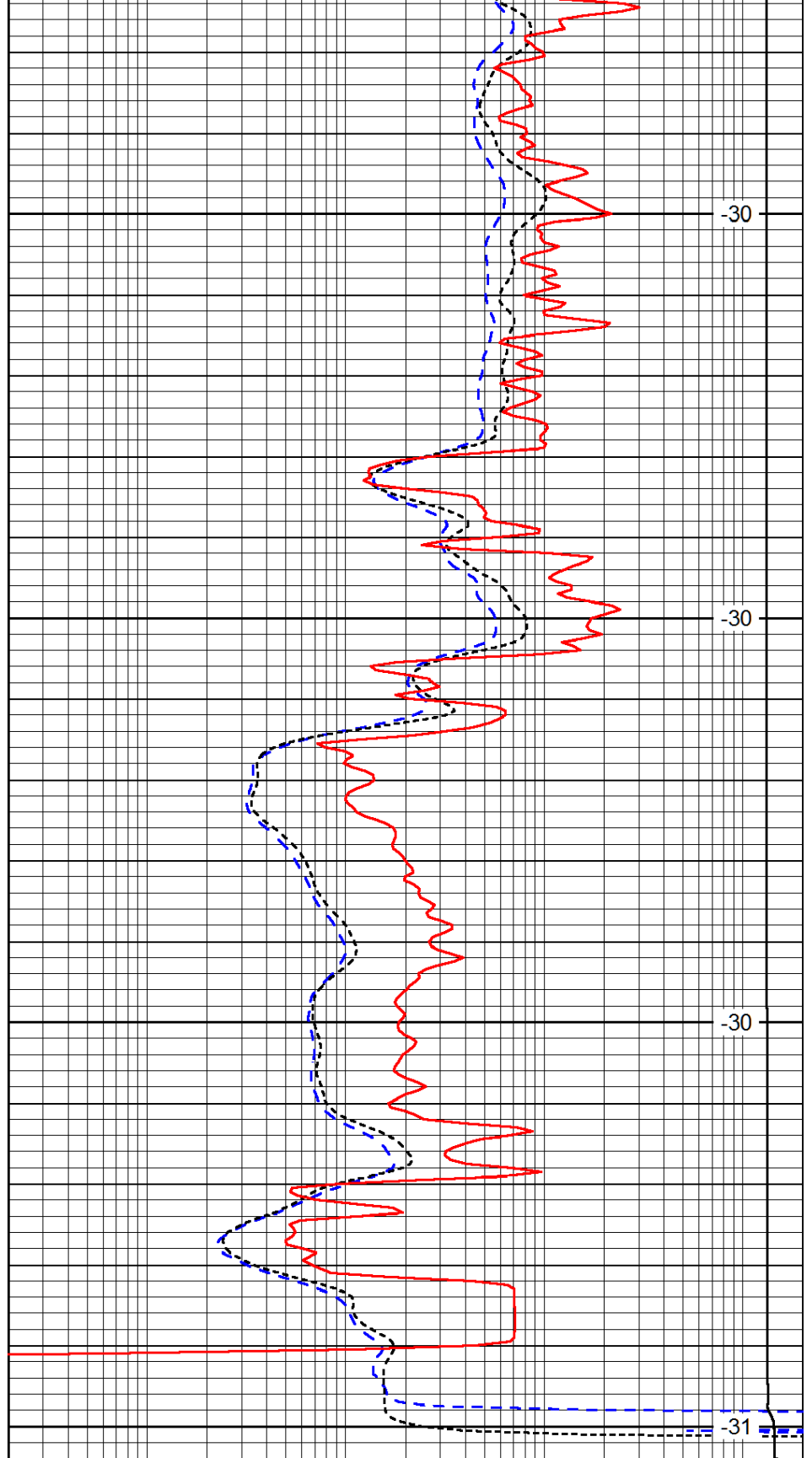
3050

3100

3150

3200

0	Gamma Ray (GAPI)	150
-160	RXO/RT	40
-200	SP (mV)	0



-30

-30

-30

-31

0.2	Deep Resistivity (Ohm-m)	2000
0.2	Medium Resistivity (Ohm-m)	2000
0.2	Shallow Resistivity (Ohm-m)	2000
10000	Line Tension (lb)	0

LSPD
(ft/min)