



Pioneer Energy Services

Dual Compensated Porosity Log

API No.	15-085-20,087-00-00		
Company	J & K Crude LLC		
Well	Hug No.01		
Field	Wildcat		
County	Jackson		
State	Kansas		
Location	2970' FSL & 2310' FWL		
Sec: 34	Tw: 8S	Rge: 15E	Other Services DILMEL
Permanent Datum	Ground Level	Elevation 1166	Elevation
Log Measured From	Kelly Bushing	10 Ft. Above Perm. Datum	K.B. 1176
Drilling Measured From	Kelly Bushing		D.F. 1166
Date	11/20/2013		

Run Number	One		
Type Log	CNL / CDL		
Depth Driller	3200		
Depth Logger	3199		
Bottom Logged Interval	3178		
Top Logged Interval	1500		
Type Fluid In Hole	Chemical		
Salinity, PPM CL	800		
Density	9.3		
Level	Full		
Max. Rec. Temp. F	108		
Operating Rig Time	4 Hours		
Equipment -- Location	17 Hays		
Recorded By	C. Desaire		
Witnessed By	George Petersen		

Borehole Record		Casing Record					
Run No.	Bit	From	To	Size	Wgt.	From	To
One	12.25	00	220	8.625	23#	00	220
Two	7.875	220	TD				

<<< Fold Here >>>

All interpretations are opinions based on inferences from electrical or other measurements and we cannot and do not guarantee the accuracy or correctness of any interpretation, and we shall not, except in the case of gross or willful negligence on our part, be liable or responsible for any loss, costs, damages, or expenses incurred or sustained by anyone resulting from any interpretation made by any of our officers, agents or employees. These interpretations are also subject to our general terms and conditions set out in our current Price Schedule.

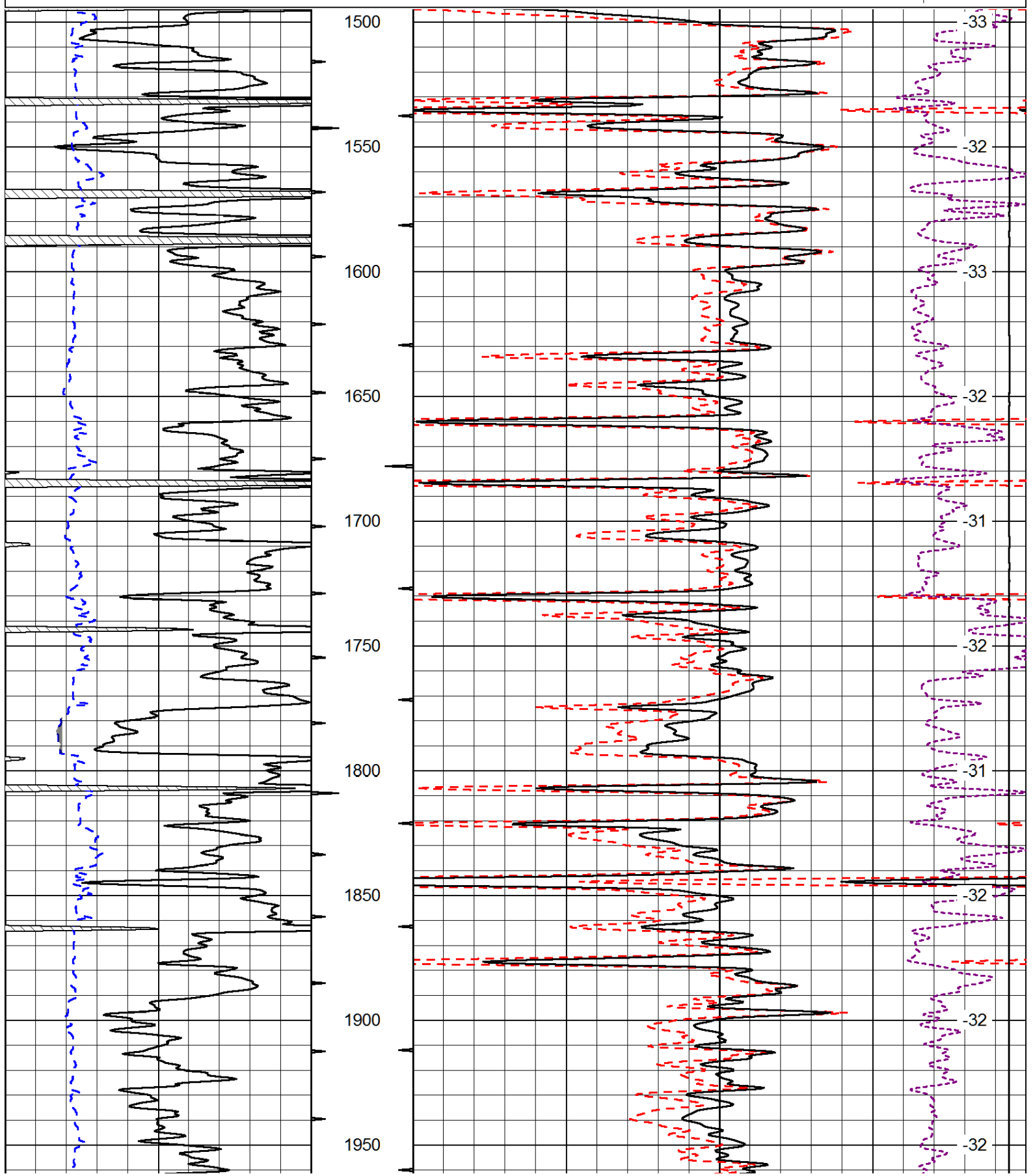
Comments

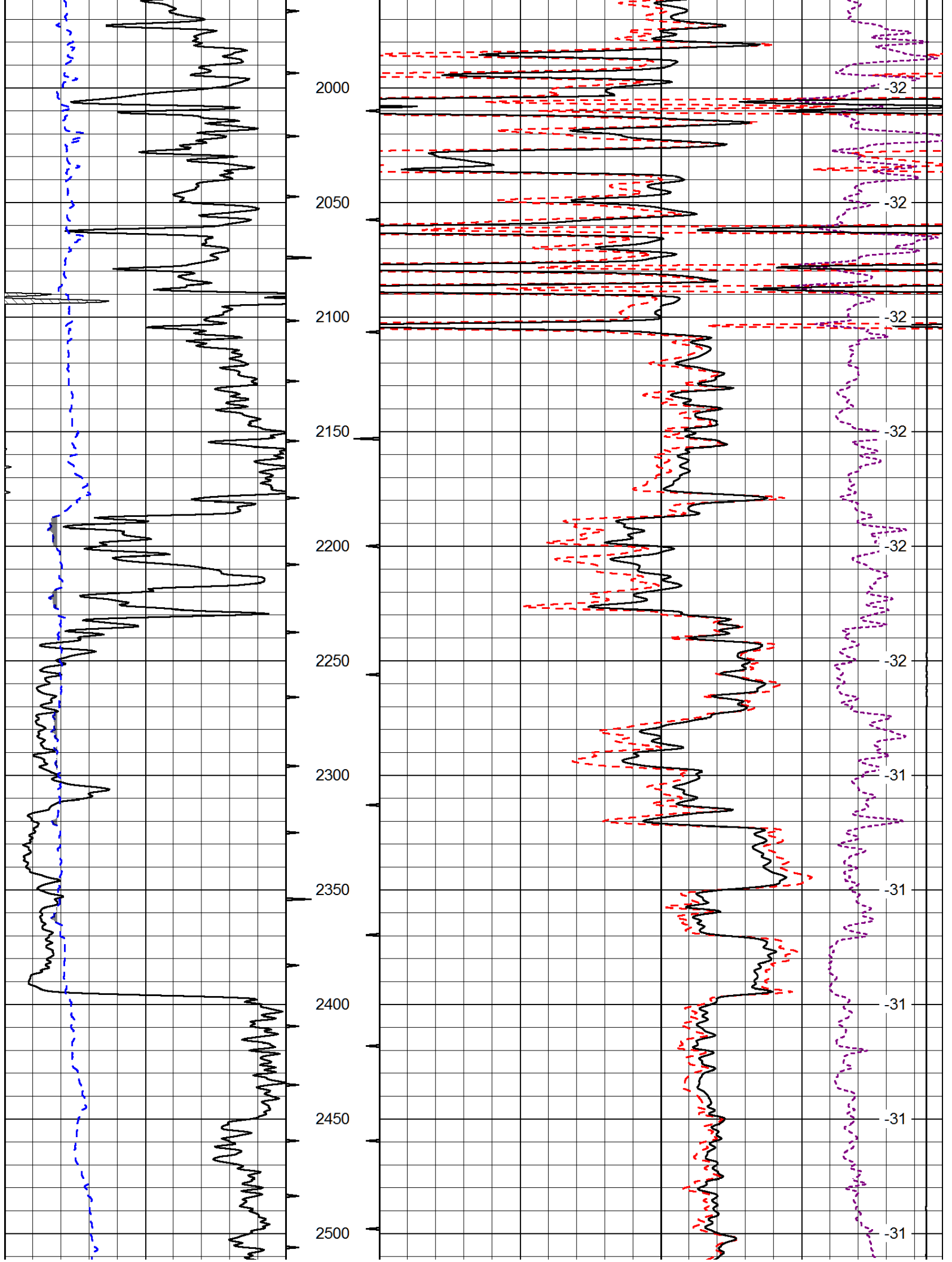
Thank you for using Log-Tech, Inc.
(785) 625-3858

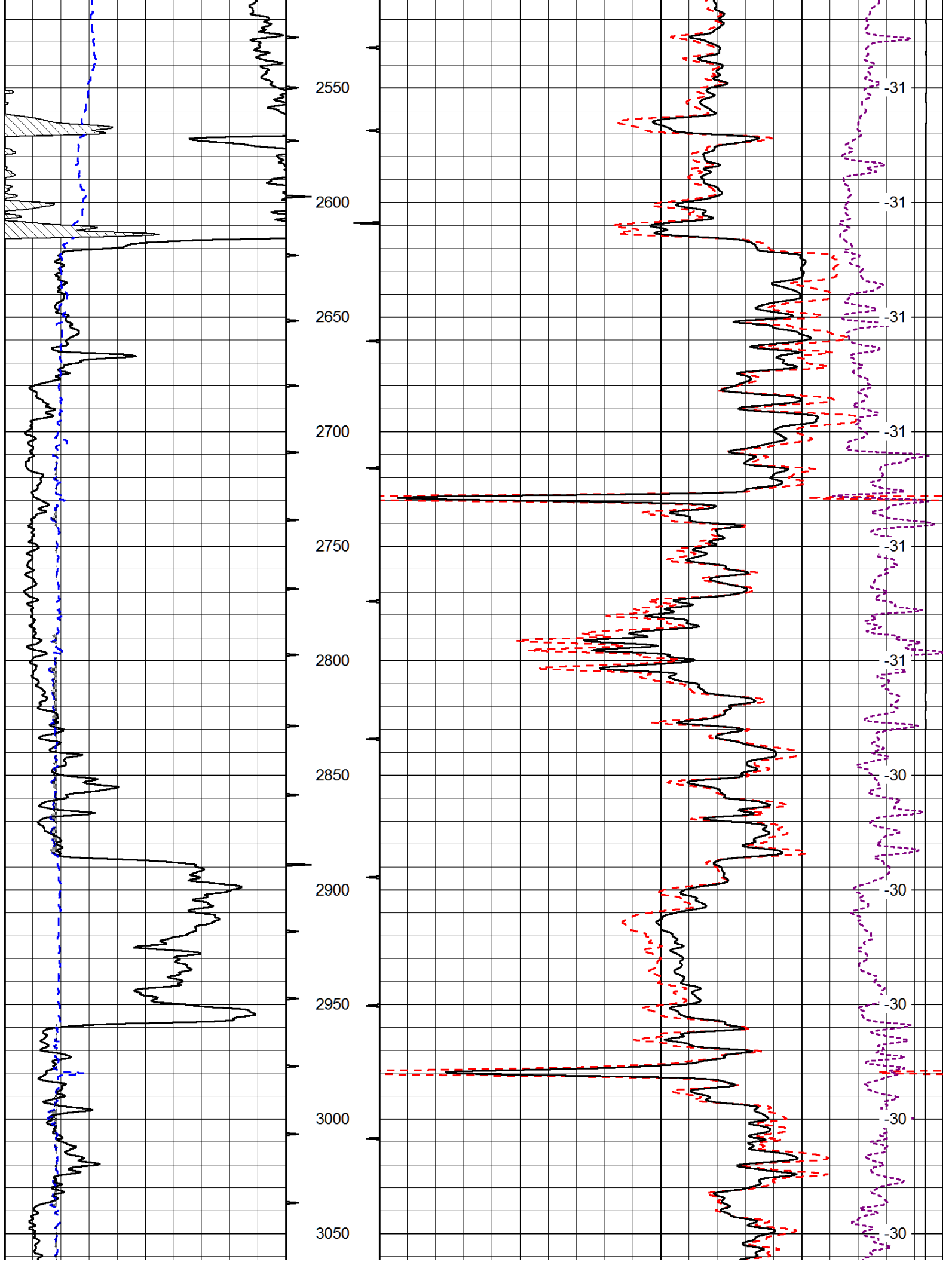
Topeka KS, N on Hwy 75 to 142 Rd,
1 1/4 W, 1/2 N, E Into at gate

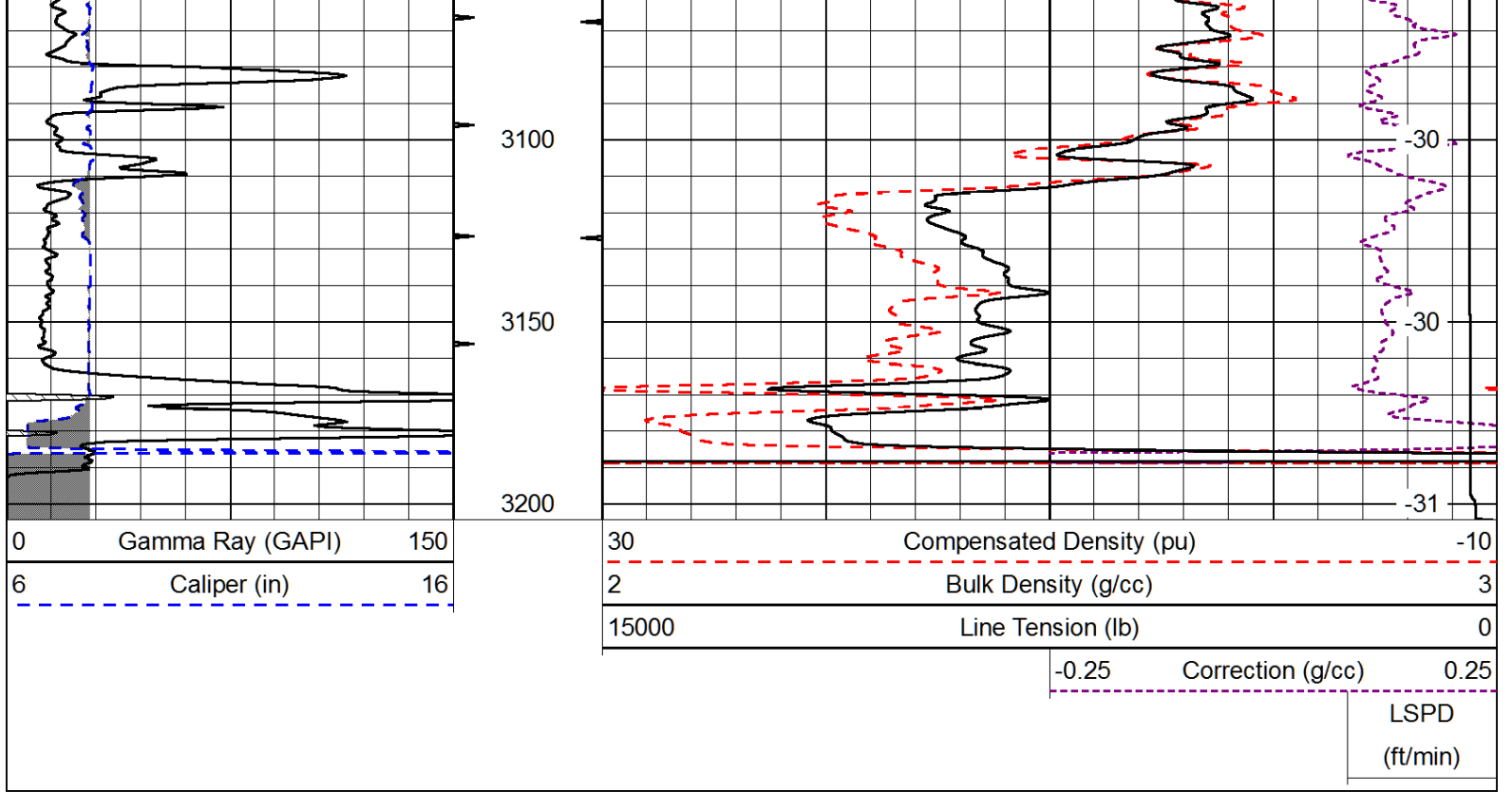
0	Gamma Ray (GAPI)	150
6	Caliper (in)	16

30	Compensated Density (pu)	-10
2	Bulk Density (g/cc)	3
15000	Line Tension (lb)	0
-0.25	Correction (g/cc)	0.25
		LSPD (ft/min)









Database File: jkhd.db
 Dataset Pathname: dil/jkstk
 Presentation Format: cndlspec
 Dataset Creation: Thu Nov 21 01:31:30 2013
 Charted by: Depth in Feet scaled 1:240

