



Pioneer Energy Services

Microresistivity Log

API No.	15-085-20,087-00-00		
Company	J & K Crude LLC		
Well	Hug No.01		
Field	Wildcat		
County	Jackson	State	Kansas
Location	2970' FSL & 2310' FWL		
Sec: 34	Twp: 8S	Rge: 15E	Other Services CNL/CDL DIL
Permanent Datum	Ground Level	Elevation 1166	Elevation
Log Measured From	Kelly Bushing	10 Ft. Above Perm. Datum	K.B. 1176
Drilling Measured From	Kelly Bushing		D.F. 1166
			G.L. 1166

Date	11/20/2013
Run Number	Two
Depth Driller	3200
Depth Logger	3199
Bottom Logged Interval	3198
Top Log Interval	2950
Casing Driller	8.625 @ 220
Casing Logger	222
Bit Size	7.875
Type Fluid in Hole	Chemical
Salinity,ppm CL	800
Density / Viscosity	9.3 50
pH / Fluid Loss	10.5 8.0
Source of Sample	Flowline
Rm @ Meas. Temp	.95 @ 45
Rmf @ Meas. Temp	.71 @ 45
Rmc @ Meas. Temp	1.28 @ 45
Source of Rmf / Rmc	Charts
Rm @ BHT	.4 @ 108
Operating Rig Time	4 Hours
Max Rec. Temp. F	108
Equipment Number	17
Location	Hays
Recorded By	C. Desaire
Witnessed By	George Petersen

<<< Fold Here >>>

All interpretations are opinions based on inferences from electrical or other measurements and we cannot and do not guarantee the accuracy or correctness of any interpretation, and we shall not, except in the case of gross or willful negligence on our part, be liable or responsible for any loss, costs, damages, or expenses incurred or sustained by anyone resulting from any interpretation made by any of our officers, agents or employees. These interpretations are also subject to our general terms and conditions set out in our current Price Schedule.

Comments

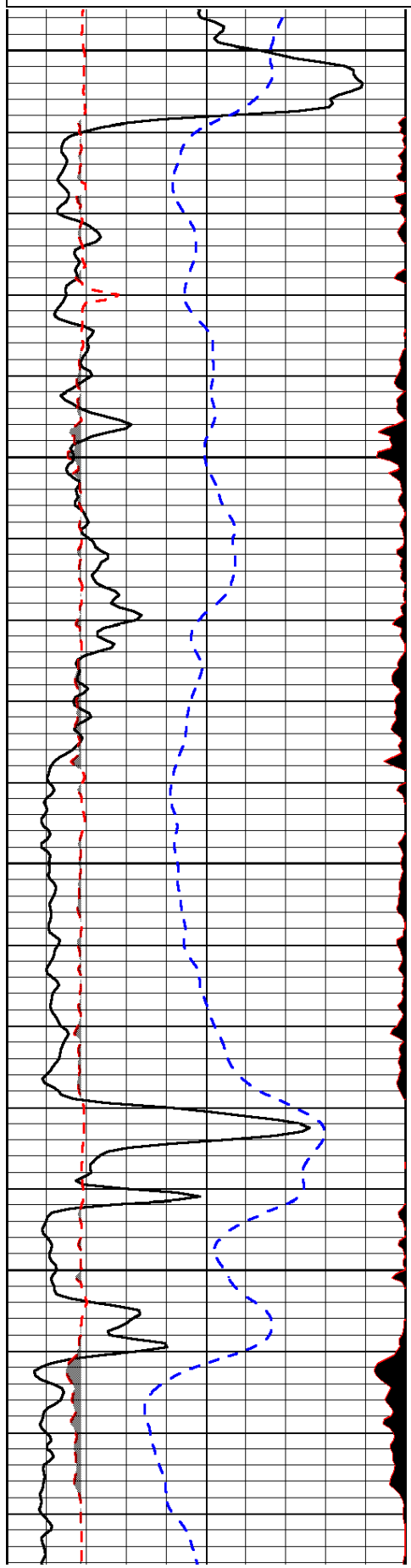
Thank you for using Log-Tech, Inc.
(785) 625-3858

Topeka KS, N on Hwy 75 to 142 Rd,
1 1/4 W, 1/2 N, E Into at gate

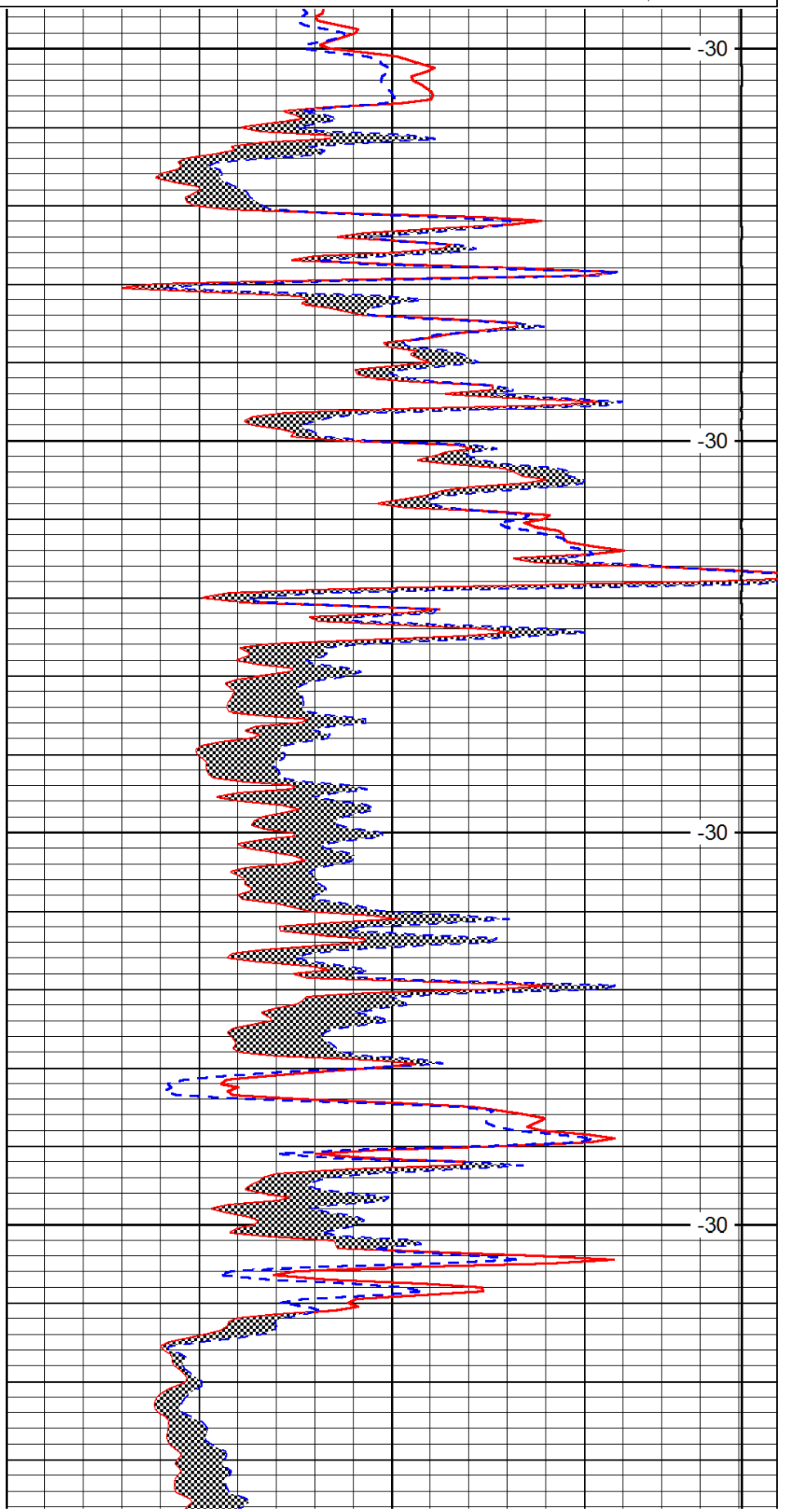
Database File: jkhd.db
 Dataset Pathname: dil/jkstk
 Presentation Format: micro
 Dataset Creation: Thu Nov 21 01:31:30 2013
 Charted by: Depth in Feet scaled 1:240

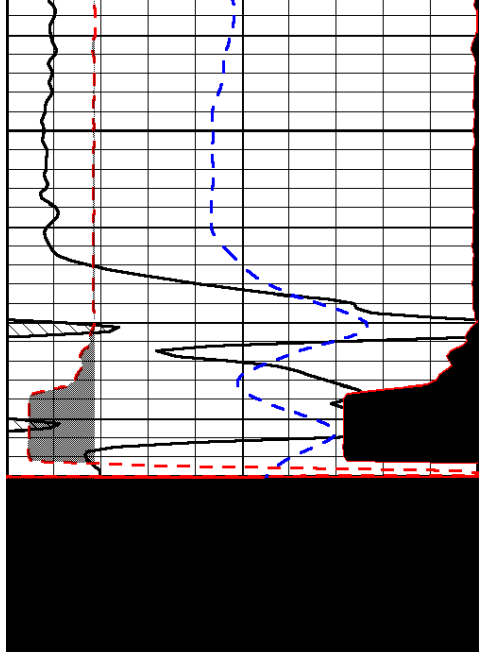
0	Gamma Ray (GAPI)	150
6	MCAL (in)	16
2.875	Mud Cake (in)	7.875
-200	SP (mV)	0

0	Micro Inverse 1 X 1 (Ohm-m)	40
0	Micro Normal 2" (Ohm-m)	40
10000	Line Weight (lb)	0
		LSPD (ft/min)



2950
3000
3050
3100

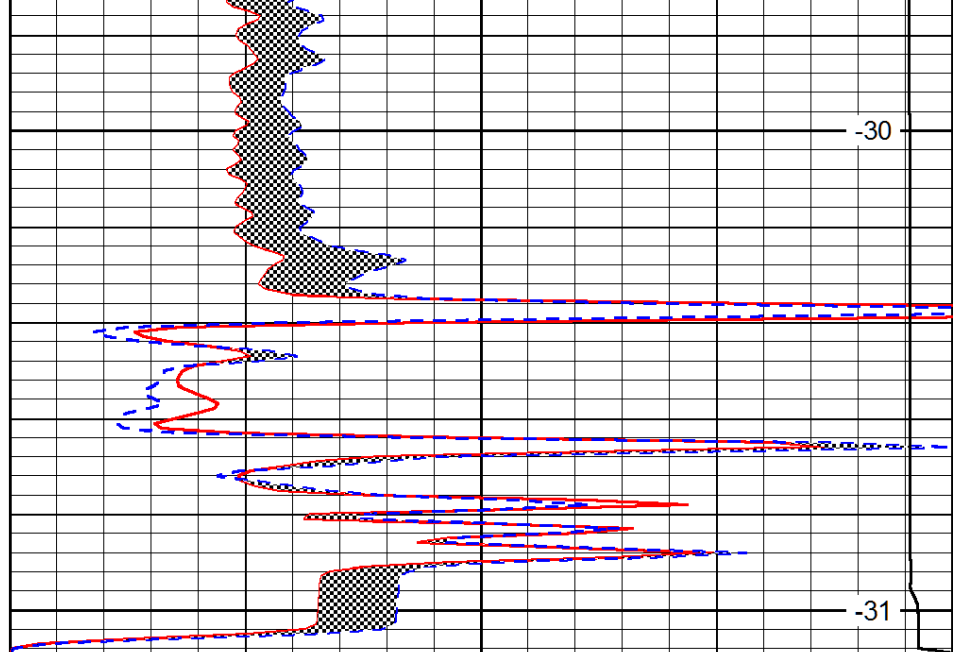




0	Gamma Ray (GAPI)	150
6	MCAL (in)	16
2.875	Mud Cake (in)	7.875
-200	SP (mV)	0

3150

3200



0	Micro Inverse 1 X 1 (Ohm-m)	40
0	Micro Normal 2" (Ohm-m)	40
10000	Line Weight (lb)	0

LSPD
(ft/min)