



# TEMPORARY ABANDONMENT WELL APPLICATION

OPERATOR: License# \_\_\_\_\_  
 Name: \_\_\_\_\_  
 Address 1: \_\_\_\_\_  
 Address 2: \_\_\_\_\_  
 City: \_\_\_\_\_ State: \_\_\_\_\_ Zip: \_\_\_\_\_ + \_\_\_\_\_  
 Contact Person: \_\_\_\_\_  
 Phone: ( \_\_\_\_\_ ) \_\_\_\_\_  
 Contact Person Email: \_\_\_\_\_  
 Field Contact Person: \_\_\_\_\_  
 Field Contact Person Phone: ( \_\_\_\_\_ ) \_\_\_\_\_

API No. 15- \_\_\_\_\_  
 Spot Description: \_\_\_\_\_  
 \_\_\_\_\_ - \_\_\_\_\_ - \_\_\_\_\_ - \_\_\_\_\_ Sec. \_\_\_\_\_ Twp. \_\_\_\_\_ S. R. \_\_\_\_\_  E  W  
 \_\_\_\_\_ feet from  N /  S Line of Section  
 \_\_\_\_\_ feet from  E /  W Line of Section  
 GPS Location: Lat: \_\_\_\_\_, Long: \_\_\_\_\_  
(e.g. xx.xxxxx) (e.g. -xxx.xxxxx)  
 Datum:  NAD27  NAD83  WGS84  
 County: \_\_\_\_\_ Elevation: \_\_\_\_\_  GL  KB  
 Lease Name: \_\_\_\_\_ Well #: \_\_\_\_\_  
 Well Type: (check one)  Oil  Gas  OG  WSW  Other: \_\_\_\_\_  
 SWD Permit #: \_\_\_\_\_  ENHR Permit #: \_\_\_\_\_  
 Gas Storage Permit #: \_\_\_\_\_  
 Spud Date: \_\_\_\_\_ Date Shut-In: \_\_\_\_\_

	Conductor	Surface	Production	Intermediate	Liner	Tubing
Size						
Setting Depth						
Amount of Cement						
Top of Cement						
Bottom of Cement						

Casing Fluid Level from Surface: \_\_\_\_\_ How Determined? \_\_\_\_\_ Date: \_\_\_\_\_

Casing Squeeze(s): \_\_\_\_\_ to \_\_\_\_\_ w / \_\_\_\_\_ sacks of cement, \_\_\_\_\_ to \_\_\_\_\_ w / \_\_\_\_\_ sacks of cement. Date: \_\_\_\_\_  
(top) (bottom) (top) (bottom)

Do you have a valid Oil & Gas Lease?  Yes  No

Depth and Type:  Junk in Hole at \_\_\_\_\_  Tools in Hole at \_\_\_\_\_ Casing Leaks:  Yes  No Depth of casing leak(s): \_\_\_\_\_  
(depth) (depth)

Type Completion:  ALT. I  ALT. II Depth of:  DV Tool: \_\_\_\_\_ w / \_\_\_\_\_ sacks of cement  Port Collar: \_\_\_\_\_ w / \_\_\_\_\_ sack of cement  
(depth) (depth)

Packer Type: \_\_\_\_\_ Size: \_\_\_\_\_ Inch Set at: \_\_\_\_\_ Feet

Total Depth: \_\_\_\_\_ Plug Back Depth: \_\_\_\_\_ Plug Back Method: \_\_\_\_\_

**Geological Data:**

Formation Name	Formation Top	Formation Base	Completion Information
1. _____	At: _____	to _____ Feet	Perforation Interval _____ to _____ Feet or Open Hole Interval _____ to _____ Feet
2. _____	At: _____	to _____ Feet	Perforation Interval _____ to _____ Feet or Open Hole Interval _____ to _____ Feet

~~UNDER PENALTY OF PERJURY I HEREBY ATTEST THAT THE INFORMATION CONTAINED HEREIN IS TRUE AND CORRECT TO THE BEST OF MY KNOWLEDGE~~

Submitted Electronically

<b>Do NOT Write in This Space - KCC USE ONLY</b>	Date Tested: _____	Results: _____	Date Plugged: _____	Date Repaired: _____	Date Put Back in Service: _____
	Review Completed by: _____ Comments: _____				
TA Approved: <input type="checkbox"/> Yes <input type="checkbox"/> Denied Date: _____					

**Mail to the Appropriate KCC Conservation Office:**

	KCC District Office #1 - 210 E. Frontview, Suite A, Dodge City, KS 67801	Phone 620.225.8888
	KCC District Office #2 / UPGS - 3450 N. Rock Road, Building 600, Suite 601, Wichita, KS 67226	Phone 316.630.4000
	KCC District Office #3 - 1500 SW Seventh Steet, Chanute, KS 66720	Phone 620.432.2300
	KCC District Office #4 - 2301 E. 13th Street, Hays, KS 67601-2651	Phone 785.625.0550



Mark Sievers, Chairman  
Thomas E. Wright, Commissioner  
Shari Feist Albrecht, Commissioner

Corporation Commission

Sam Brownback, Governor

**TEMPORARY ABANDONMENT REMINDER**

November 26, 2013

MERIT ENERGY COMPANY, LLC  
13727 NOEL RD STE 1200  
DALLAS TX 75240

RE: Temporary Abandonment, CP-111's

Dear Operator:

Attached is a list of your wells that are about to expire for temporary abandonment (TA) status according to K.A.R. 82-3-111. Please submit the necessary information to the appropriate District Office before the TA expiration date.

- If the well remains temporarily abandoned you must submit a new TA application each year, before the expiration date.
- If a well has been returned to service or plugged, please give us the approximate date.
- If you are no longer the operator of the well you are required to submit a Transfer of Operator (T-1) form.

You may contact me at the number below if you have any questions.

Sincerely,



MICHELE PENNINGTON

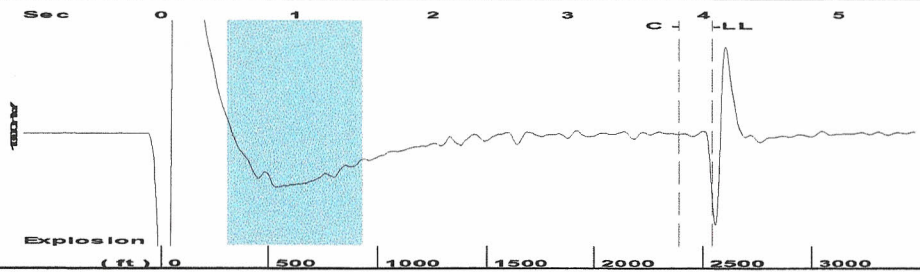
KCC District # 1

November 26, 2013

## **TEMPORARY ABANDONMENT REMINDER**

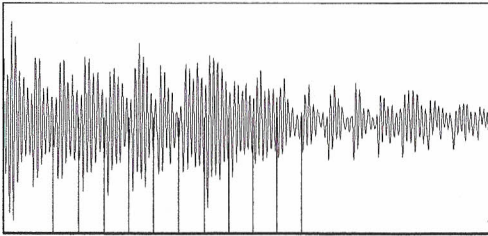
KCC Lic #	API Well #	Lease Name / Well #	Well Location	County	TA Expiration
32446	15-055-20825-00-02	JOHNSON 2-16	16-23S-33W, SESWNW	FINNEY	01/17/2014

Group: Garden City TA'd Well: Johnson #2 (acquired on: 12/13/13 15:06:45 )

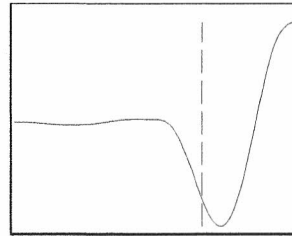


Filter Type High Pass Automatic Collar Count Yes Time 4.063 sec  
 Manual Acoustic Velo 1243.14 ft/s Manual JTS/sec 19.6078 Joints 80.2511 Jts  
 Depth 2543.96 ft

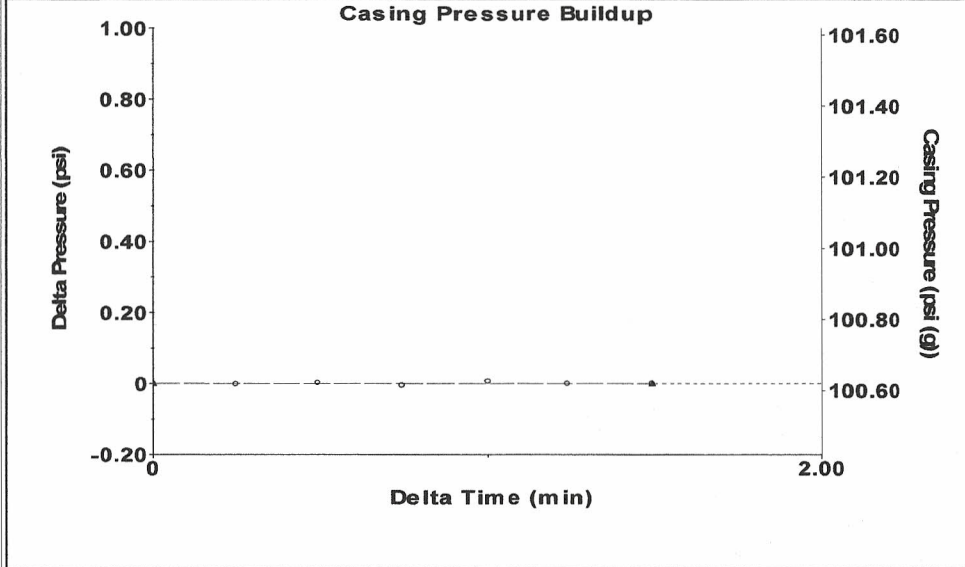
[ 0.5 to 1.5 (Sec) ]



Analysis Method: Automatic



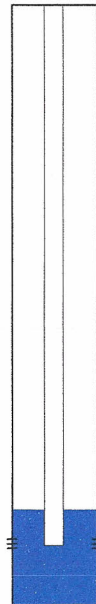
Group: Garden City TA'd Well: Johnson #2 (acquired on: 12/13/13 15:06:45 )



Change in Pressure -0.00 psi PT8746  
 Range 0 - ? psi  
 Change in Time 1.50 min

Group: Garden City TA'd Well: Johnson #2 (acquired on: 12/13/13 15:06:45 )

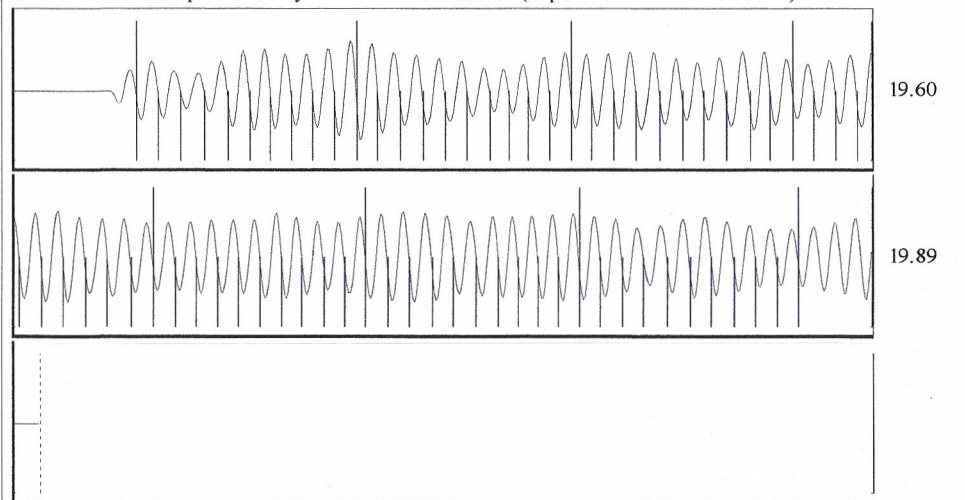
<b>Production</b>	<b>Potential</b>	<b>Casing Pressure</b>
Current		100.6 psi (g)
Oil 0	- * - BBL/D	Casing Pressure Buildup
Water 0	- * - BBL/D	-0.000 psi
Gas 0.0	- * - Mscf/D	1.50 min
		Gas/Liquid Interface Pressure
		108.2 psi (g)
<b>IPR Method</b>	<b>Vogel</b>	
PBHP/SBHP	- * -	
Production Efficiency	0.0	
		<b>Liquid Level Depth</b>
Oil 40 deg.API		2543.96 ft
Water 1.05 Sp.Gr.H2O		
Gas 0.74 Sp.Gr.AIR		<b>Pump Intake Depth</b>
		2750.00 ft
<b>Acoustic Velocity</b>	<b>1252.26 ft/s</b>	<b>Formation Depth</b>
		2740.00 ft



Static  
 Oil Column Height MD 0 ft  
 Water Column Height MD 196 ft  
 Static BHP 197.3 psi (g)

Acoustic Test

Group: Garden City TA'd Well: Johnson #2 (acquired on: 12/13/13 15:06:45 )



Acoustic Velocity	1252.26 ft/s	Joints counted	70
Joints Per Second	19.7517 jts/sec	Joints to liquid level	80.2511
Depth to liquid level	2543.96 ft	Filter Width	17.6078 21.6078
Automatic Collar Count	Yes	Time to 1st Collar	0.28 3.824