

1186870

Operator Name: _____ Lease Name: _____ Well #: _____

Sec. _____ Twp. _____ S. R. _____ East West County: _____

INSTRUCTIONS: Show important tops of formations penetrated. Detail all cores. Report all final copies of drill stems tests giving interval tested, time tool open and closed, flowing and shut-in pressures, whether shut-in pressure reached static level, hydrostatic pressures, bottom hole temperature, fluid recovery, and flow rates if gas to surface test, along with final chart(s). Attach extra sheet if more space is needed.

Final Radioactivity Log, Final Logs run to obtain Geophysical Data and Final Electric Logs must be emailed to kcc-well-logs@kcc.ks.gov. Digital electronic log files must be submitted in LAS version 2.0 or newer AND an image file (TIFF or PDF).

Drill Stem Tests Taken <input type="checkbox"/> Yes <input type="checkbox"/> No <i>(Attach Additional Sheets)</i> Samples Sent to Geological Survey <input type="checkbox"/> Yes <input type="checkbox"/> No Cores Taken <input type="checkbox"/> Yes <input type="checkbox"/> No Electric Log Run <input type="checkbox"/> Yes <input type="checkbox"/> No List All E. Logs Run: _____	<input type="checkbox"/> Log Formation (Top), Depth and Datum <input type="checkbox"/> Sample Name Top Datum
--	---

CASING RECORD <input type="checkbox"/> New <input type="checkbox"/> Used							
Report all strings set-conductor, surface, intermediate, production, etc.							
Purpose of String	Size Hole Drilled	Size Casing Set (In O.D.)	Weight Lbs. / Ft.	Setting Depth	Type of Cement	# Sacks Used	Type and Percent Additives

ADDITIONAL CEMENTING / SQUEEZE RECORD				
Purpose:	Depth Top Bottom	Type of Cement	# Sacks Used	Type and Percent Additives
<input type="checkbox"/> Perforate <input type="checkbox"/> Protect Casing <input type="checkbox"/> Plug Back TD <input type="checkbox"/> Plug Off Zone				

Did you perform a hydraulic fracturing treatment on this well? Yes No *(If No, skip questions 2 and 3)*

Does the volume of the total base fluid of the hydraulic fracturing treatment exceed 350,000 gallons? Yes No *(If No, skip question 3)*

Was the hydraulic fracturing treatment information submitted to the chemical disclosure registry? Yes No *(If No, fill out Page Three of the ACO-1)*

Shots Per Foot	PERFORATION RECORD - Bridge Plugs Set/Type Specify Footage of Each Interval Perforated	Acid, Fracture, Shot, Cement Squeeze Record <i>(Amount and Kind of Material Used)</i>	Depth

TUBING RECORD:	Size:	Set At:	Packer At:	Liner Run: <input type="checkbox"/> Yes <input type="checkbox"/> No
----------------	-------	---------	------------	---

Date of First, Resumed Production, SWD or ENHR.	Producing Method: <input type="checkbox"/> Flowing <input type="checkbox"/> Pumping <input type="checkbox"/> Gas Lift <input type="checkbox"/> Other <i>(Explain)</i> _____
---	--

Estimated Production Per 24 Hours	Oil Bbls.	Gas Mcf	Water Bbls.	Gas-Oil Ratio	Gravity

DISPOSITION OF GAS: <input type="checkbox"/> Vented <input type="checkbox"/> Sold <input type="checkbox"/> Used on Lease <i>(If vented, Submit ACO-18.)</i>	METHOD OF COMPLETION: <input type="checkbox"/> Open Hole <input type="checkbox"/> Perf. <input type="checkbox"/> Dually Comp. <input type="checkbox"/> Commingled <i>(Submit ACO-5)</i> <input type="checkbox"/> Other <i>(Specify)</i> _____	PRODUCTION INTERVAL: _____ _____
--	--	---

Form	ACO1 - Well Completion
Operator	Vincent Oil Corporation
Well Name	Sellard 1-14
Doc ID	1186870

All Electric Logs Run

Dual Induction
Density - Neutron
Micro-log
Sonic

Form	ACO1 - Well Completion
Operator	Vincent Oil Corporation
Well Name	Sellard 1-14
Doc ID	1186870

Tops

Name	Top	Datum
Heebner Shale	4349	(-1892)
Brown Limestone	4509	(-2052)
Lansing	4518	(-2061)
Stark Shale	4841	(-2384)
Pawnee	5053	(-2596)
Cherokee Shale	5100	(-2643)
Base Penn Limestone	5186	(-2729)
Penn Conglomerate	5220	(-2763)
Mississippian	5233	(-2776)
RTD	5620	(-3163)

Form	ACO1 - Well Completion
Operator	Vincent Oil Corporation
Well Name	Sellard 1-14
Doc ID	1186870

Perforations

Shots Per Foot	Perforation Record	Material Record	Depth
4	5220' to 5228'	Perf: 5220' to 5228', ran tubing to 5240', Acidized	
		with 1000 gal 15% MCA, est load at 144 bbl,	
		swab 129 bbls in 7 hrs, SDFN, SICP 1300#, SITP 1300#,	
		flowed strong blow of gas with .4 to 2 bbls fluid /hr 10% oil cut, SDFN	
		SICP 1300#, SITP 1300#, flowed well , est rate at 200 MCFGPD with .83 bbls fluid with a show of oil,	
		Shut well in, waiting on pipeline connection	

QUALITY WELL SERVICE, INC.

5957

Federal Tax I.D. # 481187368

Home Office 324 Simpson St., Pratt, KS 67124

OFFICE

Cell 620-727-3410
Office / Fax 620-672-3663

T 000 620-300-5422

Rich's Cell 620-727-3409
Brady's Cell 620-727-6964

Date	10-3-13	Sec.	14	Twp.	23	Range	22	County	Foreo	State	Ks	On Location	5:00 AM	Finish	7:30 AM		
Lease	SELLARO		Well No.		1-14		Location									Bucklin Ks W to 129 th Rd	
Contractor	DUKE DRLG #1				Owner				T.C. 13/4 S Winto								
Type Job	SURFACE				To Quality Well Service, Inc.				You are hereby requested to rent cementing equipment and furnish cementer and helper to assist owner or contractor to do work as listed.								
Hole Size	12 1/4		T.D.		572 610		Charge To									Vincent Oil Corp.	
Csg.	8 5/8 23#		Depth		610		Street										
Tbg. Size			Depth				City									State	
Tool			Depth				The above was done to satisfaction and supervision of owner agent or contractor.										
Cement Left in Csg.			Shoe Joint		40		Cement Amount Ordered									115 sx moc 3/8 CL 1/4" CF.	
Meas Line			Displace		36.5 Bbls		125 sx Common 2/8 GEL 3/8 CL 1/4" CF.										
EQUIPMENT																	
Pumptrk	No.	3		M.KE		Common		125									
Bulktrk	No.	5		SEAN		MOC		115									
Bulktrk	No.	10		CHAO		Gel.		5									
Pickup	No.			TODD		Calcium		9									
JOB SERVICES & REMARKS																	
Rat Hole													Hulls				
Mouse Hole													Salt				
Centralizers													Flowseal		60		
Baskets													Kol-Seal				
D/V or Port Collar													Mud CLR		48		
Run 14 #3 8 5/8 23# NEW Csg.													CFL-117 or CD110 CAF		38		
SET 610'													Sand				
													Handling		254		
													Mileage		50		
Hook up to csg & BREAK circ w/ris													8 5/8		FLOAT EQUIPMENT		
													Guide Shoe				
Mix & Pump 115 sx moc 3/8 CL 1/4" CF.													Centralizer				
11.0 #/gal													Baskets		1 EA BAFFLE Plate		
Mix & Pump 125 sx Common													AFU Inserts		1 EA WOODEN Plug		
2/8 GEL 3/8 CL 1/4" CF 15 #/gal													Float Shoe				
SHUT DOWN RELEASE WOODEN Plug													Latch Down				
Displ 36.5 Bbls total													LMV		50		
Close Valve on csg 600#													Pumptrk Charge		SURFACE		
Plug down 27.75													Mileage		50		
Good Circ thru JO3																	
Circ CNT TO PIT																	
think TODD can sample																	
X Signature	Mike Hedley														Tax		
															Discount		
															Total Charge		

QUALITY WELL SERVICE, INC.

5958

Federal Tax I.D. # 481187368

Home Office 324 Simpson St., Pratt, KS 67124

OFFICE
Heath's Cell 620-727-3410
Office / Fax 620-672-3663

Rich's Cell 620-727-3409
Brady's Cell 620-727-6964

Date	10-3-13	Sec.	14	Twp.	23	Range	22	County	FOON	State	Ks	On Location	12:00 P.M.	Finish	12:45 P.M.
Lease	SELLARO	Well No.	1-14		Location Bucklin Ks W to 129 th Rd										
Contractor	DUKE Dels #1				Owner 1 ^{3/4} S W into										
Type Job	1" JOB				To Quality Well Service, Inc. You are hereby requested to rent cementing equipment and furnish cementer and helper to assist owner or contractor to do work as listed.										
Hole Size	12 1/4		T.D.		610		Charge To Vincent Oil Corp								
Csg.	85/3 23 ^H		Depth		610		Street								
Tbg. Size			Depth				City								
Tool			Depth				State								
Cement Left in Csg.			Shoe Joint		40		The above was done to satisfaction and supervision of owner agent or contractor.								
Meas Line			Displace		36.5 Bbls		Cement Amount Ordered 100 ^{xx} Common 3 1/2 CC								
EQUIPMENT													USED 75 ^{xx}		
Pumptrk	No.	3		MIKE		Common		75							
Bulktrk	No.	5		SEAN		Poz. Mix									
Bulktrk	No.					Gel.									
Pickup	No.			TODD		Calcium		3							
JOB SERVICES & REMARKS													Hulls		
Rat Hole													Salt		
Mouse Hole													Flowseal		
Centralizers													Kol-Seal		
Baskets													Mud CLR 48		
D/V or Port Collar													CFL-117 or CD110 CAF 38		
CALLED 10:30													Sand		
CMT fell 30'													Handling 78		
ON LOC 12:00 ✓ CMT down 30													Mileage 50		
FLOAT EQUIPMENT															
Mix & Pump 75 ^{xx} Common 3 1/2 CC													Guide Shoe		
15 ^H /GAL													Centralizer		
CELLAR Full LET 15 min													Baskets		
JET CELLAR													AFU Inserts		
JOB COMPLETE													Float Shoe		
													Latch Down		
Thank, TODD CHAD MIKE													LMV 50		
													Pumptrk Charge		
PLEASE CALL AGAIN													Mileage 50		
Signature [Signature]													Tax		
													Discount		
													Total Charge		

QUALITY WELL SERVICE, INC.

5966

Federal Tax I.D. # 481187368

Home Office 324 Simpson St., Pratt, KS 67124

Heath's Cell 620-727-3410
Office / Fax 620-672-3663

Rich's Cell 620-727-3409
Brady's Cell 620-727-6964

Date	10-19-13	Sec.	14	Twp.	29	Range	22	County	Fooco	State	Ks	On Location	5:45 PM	Finish	11:45 AM
Lease	SELLARO		Well No.	1-14		Location									
Contractor						Owner									
Type Job						To Quality Well Service, Inc. You are hereby requested to rent cementing equipment and furnish cementer and helper to assist owner or contractor to do work as listed.									
Hole Size						T.D.		Charge To							
Csg.						Depth		Street							
Tbg. Size						Depth		City							
Tool						Depth		State							
Cement Left in Csg.						Shoe Joint		The above was done to satisfaction and supervision of owner agent or contractor.							
Meas Line						Displace		Cement Amount Ordered							
EQUIPMENT													100% Salt 5 1/2" x Gilson to 5 1/2" Gro-Hok		
Pumptrk	No.	3		CHAS		Common		225							
Bulktrk	No.	7		SEAN		Poz. Mix									
Bulktrk	No.					Gel.									
Pickup	No.			TODD		Calcium		105.75"							
JOB SERVICES & REMARKS													Hulls		
Rat Hole						Salt		24							
Mouse Hole						Flow		7 GAL CC-1							
Centralizers						Kol-Seal		1125'							
Baskets						Mud CLR 48		500 GAL							
D/V or Port Collar						CFL-117 or CD110 CAF 38									
Run 129 IT's 5 1/2" 14" csg						Sand									
1st = 42.38 Reg G SIDE - AFU insert						Handling		249							
Hook up to csg Deep Ball BREAK (CCW) zig						Mileage		50							
Pump 3 Bbls H ₂ O 12 Bbls M Flush 3 Bbls H ₂ O						5 1/2" FLOAT EQUIPMENT									
Plug R- Mouse holes						Guide Shoe		1 EA							
Mix Pump 1755x Proc 2 15 1/4 GAL						Centralizer		6 EA							
SHUT down wash up trk & Release Plug						Baskets									
Disp 131 Bbls 2 1/2" KLL						AFU Inserts		1 EA							
1st ps 700#						Float Shoe		1 EA TOP Rubber Plug							
Plug down @ 11:25 P.M 1500#						Latch Down									
RELEASE & HOLD						LMV 50									
						Pumptrk Charge		Longsting							
						Mileage		50							
Thanks Todd CHAS SEAN													Tax		
PLEASE CALL 10/19/13													Discount		
Signature													Total Charge		



**TRILOBITE
TESTING, INC.**

DRILL STEM TEST REPORT

Vincent Oil Co

14-29s-22w Ford

155 N Market Ste 700
Wichita Ks 67202

1-14 Sellard

Job Ticket: 52511

DST#: 2

ATTN: Tom Dudgeon

Test Start: 2013.10.16 @ 11:58:51

GENERAL INFORMATION:

Formation: **Mississippi**

Deviated: No Whipstock: ft (KB)

Time Tool Opened: 14:15:51

Time Test Ended: 20:54:06

Test Type: Conventional Bottom Hole (Reset)

Tester: Leal Cason

Unit No: 45

Interval: 5237.00 ft (KB) To 5274.00 ft (KB) (TVD)

Reference Elevations: 2457.00 ft (KB)

Total Depth: 5274.00 ft (KB) (TVD)

2445.00 ft (CF)

Hole Diameter: 7.88 inches Hole Condition: Good

KB to GR/CF: 12.00 ft

Serial #: 6798

Inside

Press @ Run Depth: 112.51 psig @ 5238.00 ft (KB)

Capacity: 8000.00 psig

Start Date: 2013.10.16

End Date: 2013.10.16

Last Calib.: 2013.10.16

Start Time: 11:58:52

End Time: 20:54:06

Time On Btm: 2013.10.16 @ 14:08:21

Time Off Btm: 2013.10.16 @ 18:55:51

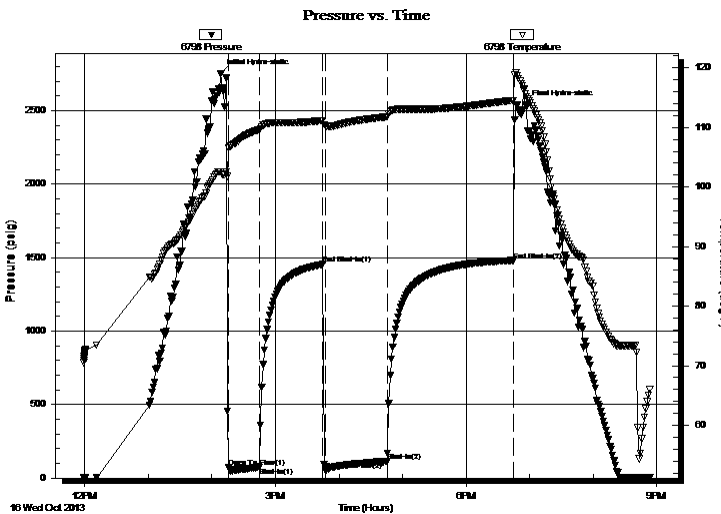
TEST COMMENT: IF: Strong Blow BOB In 15 Seconds GTS In 17 Minutes Gauged & Caught Sample

IS: Surface Blow Back

FF: Strong Blow BOB & GTS Immediate, Gauged Gas

FS: Surface Blow Back

PRESSURE SUMMARY



Time (Min.)	Pressure (psig)	Temp (deg F)	Annotation
0	2753.92	102.57	Initial Hydro-static
8	71.03	106.64	Open To Flow (1)
37	75.70	109.59	Shut-In(1)
97	1454.51	111.19	End Shut-In(1)
99	55.51	110.33	Open To Flow (2)
158	112.51	111.80	Shut-In(2)
277	1481.19	114.56	End Shut-In(2)
288	2540.37	115.71	Final Hydro-static

Recovery

Length (ft)	Description	Volume (bbl)
0.00	GTS	0.00
100.00	SOSM -1% O +99% M	1.40

* Recovery from multiple tests

Gas Rates

	Choke (inches)	Pressure (psig)	Gas Rate (Mcf/d)
First Gas Rate	0.25	28.00	67.26
Last Gas Rate	0.25	60.00	118.03
Max. Gas Rate	0.25	60.00	118.03



**TRILOBITE
TESTING, INC.**

DRILL STEM TEST REPORT

FLUID SUMMARY

Vincent Oil Co

14-29s-22w Ford

155 N Market Ste 700
Wichita Ks 67202

1-14 Sellard

Job Ticket: 52511

DST#: 2

ATTN: Tom Dudgeon

Test Start: 2013.10.16 @ 11:58:51

Mud and Cushion Information

Mud Type: Gel Chem

Cushion Type:

Oil API:

deg API

Mud Weight: 9.00 lb/gal

Cushion Length:

ft

Water Salinity:

ppm

Viscosity: 49.00 sec/qt

Cushion Volume:

bbbl

Water Loss: 10.79 in³

Gas Cushion Type:

Resistivity: ohm.m

Gas Cushion Pressure:

psig

Salinity: 7400.00 ppm

Filter Cake: 0.02 inches

Recovery Information

Recovery Table

Length ft	Description	Volume bbl
0.00	GTS	0.000
100.00	SOSM - 1% O +99% M	1.403

Total Length: 100.00 ft Total Volume: 1.403 bbl

Num Fluid Samples: 0

Num Gas Bombs: 0

Serial #:

Laboratory Name:

Laboratory Location:

Recovery Comments:



**TRILOBITE
TESTING, INC.**

DRILL STEM TEST REPORT

GAS RATES

Vincent Oil Co

14-29s-22w Ford

155 N Market Ste 700
Wichita Ks 67202

1-14 Sellard

Job Ticket: 52511

DST#: 2

ATTN: Tom Dudgeon

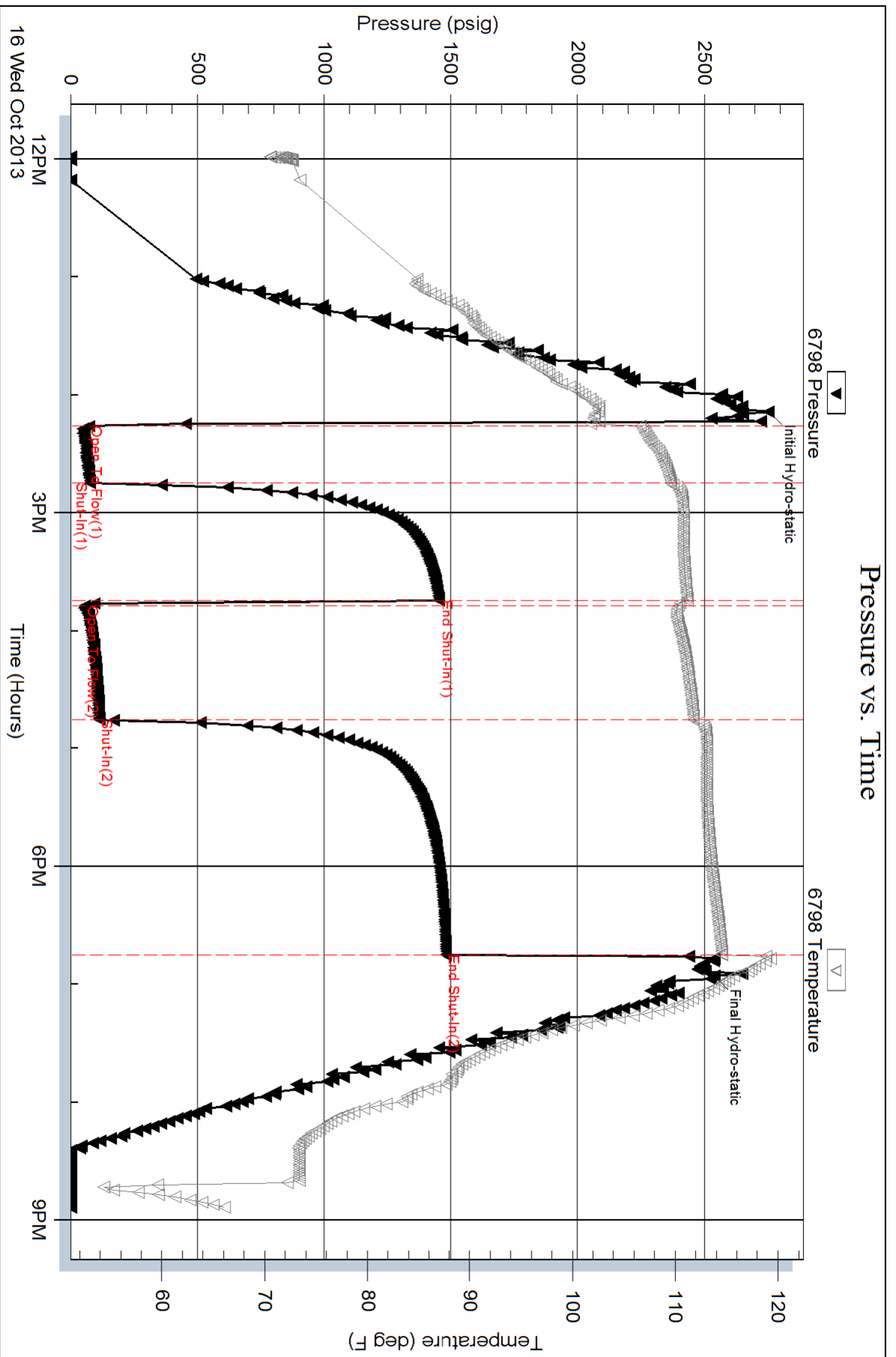
Test Start: 2013.10.16 @ 11:58:51

Gas Rates Information

Temperature: 59 (deg F)
Relative Density: 0.65
Z Factor: 0.8

Gas Rates Table

Flow Period	Elapsed Time	Choke (inches)	Pressure (psig)	Gas Rate (Mcf/d)
1	20	0.25	28.00	67.26
1	20	0.25	28.00	67.26
1	30	0.25	28.00	67.26
2	10	0.25	40.00	86.30
2	20	0.25	46.00	95.82
2	30	0.25	50.00	102.16
2	40	0.25	60.00	118.03
2	50	0.25	60.00	118.03





TRILOBITE TESTING, INC.

DRILL STEM TEST REPORT

Vincent Oil Co

14-29s-22w Ford

155 N Market Ste 700
Wichita Ks 67202

1-14 Sellard

ATTN: Tom Dudgeon

Job Ticket: 52510

DST#: 1

Test Start: 2013.10.15 @ 11:50:38

GENERAL INFORMATION:

Formation: **Conglomerate Sand**

Deviated: No Whipstock: ft (KB)

Time Tool Opened: 15:05:08

Time Test Ended: 22:22:08

Test Type: Conventional Bottom Hole (Initial)

Tester: Leal Cason

Unit No: 45

Interval: 5174.00 ft (KB) To 5230.00 ft (KB) (TVD)

Reference Elevations: 2457.00 ft (KB)

Total Depth: 5230.00 ft (KB) (TVD)

2445.00 ft (CF)

Hole Diameter: 7.88 inches Hole Condition: Good

KB to GR/CF: 12.00 ft

Serial #: 6798

Inside

Press @ Run Depth: 61.14 psig @ 5175.00 ft (KB)

Capacity: 8000.00 psig

Start Date: 2013.10.15

End Date:

2013.10.15

Last Calib.:

2013.10.15

Start Time: 11:50:39

End Time:

22:22:08

Time On Btm:

2013.10.15 @ 15:02:38

Time Off Btm:

2013.10.15 @ 20:05:38

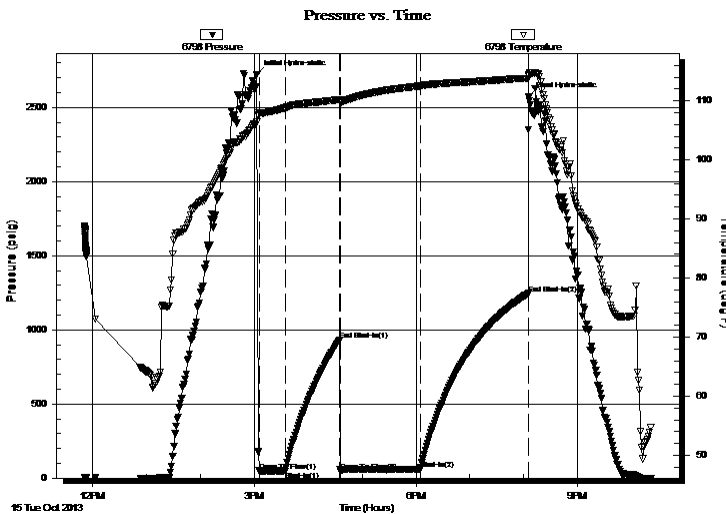
TEST COMMENT: IF: Strong blow , BOB 30 Seconds

IS: No Blow Back

FF: Strong Blow BOB Immediate GTS In 12 Minutes Gauged & Caught Sample

FS: No Blow Back

PRESSURE SUMMARY



Time (Min.)	Pressure (psig)	Temp (deg F)	Annotation
0	2721.81	106.38	Initial Hydro-static
3	49.35	107.98	Open To Flow (1)
32	48.69	108.78	Shut-In(1)
92	929.13	110.19	End Shut-In(1)
93	45.91	109.92	Open To Flow (2)
182	61.14	112.51	Shut-In(2)
303	1244.55	113.81	End Shut-In(2)
303	2571.73	114.40	Final Hydro-static

Recovery

Length (ft)	Description	Volume (bbl)
0.00	5103 GIP	0.00
63.00	GCM 2% G 98% M	0.88

Gas Rates

	Choke (inches)	Pressure (psig)	Gas Rate (Mcf/d)
First Gas Rate	0.25	7.00	33.95
Last Gas Rate	0.25	7.00	33.95
Max. Gas Rate	0.25	7.00	33.95



**TRILOBITE
TESTING, INC.**

DRILL STEM TEST REPORT

FLUID SUMMARY

Vincent Oil Co

14-29s-22w Ford

155 N Market Ste 700
Wichita Ks 67202

1-14 Sellard

Job Ticket: 52510

DST#: 1

ATTN: Tom Dudgeon

Test Start: 2013.10.15 @ 11:50:38

Mud and Cushion Information

Mud Type: Gel Chem

Cushion Type:

Oil API:

deg API

Mud Weight: 9.00 lb/gal

Cushion Length:

ft

Water Salinity:

ppm

Viscosity: 50.00 sec/qt

Cushion Volume:

bbbl

Water Loss: 9.58 in³

Gas Cushion Type:

Resistivity: ohm.m

Gas Cushion Pressure:

psig

Salinity: 4900.00 ppm

Filter Cake: 0.02 inches

Recovery Information

Recovery Table

Length ft	Description	Volume bbbl
0.00	5103 GIP	0.000
63.00	GCM 2% G 98% M	0.884

Total Length: 63.00 ft Total Volume: 0.884 bbl

Num Fluid Samples: 0

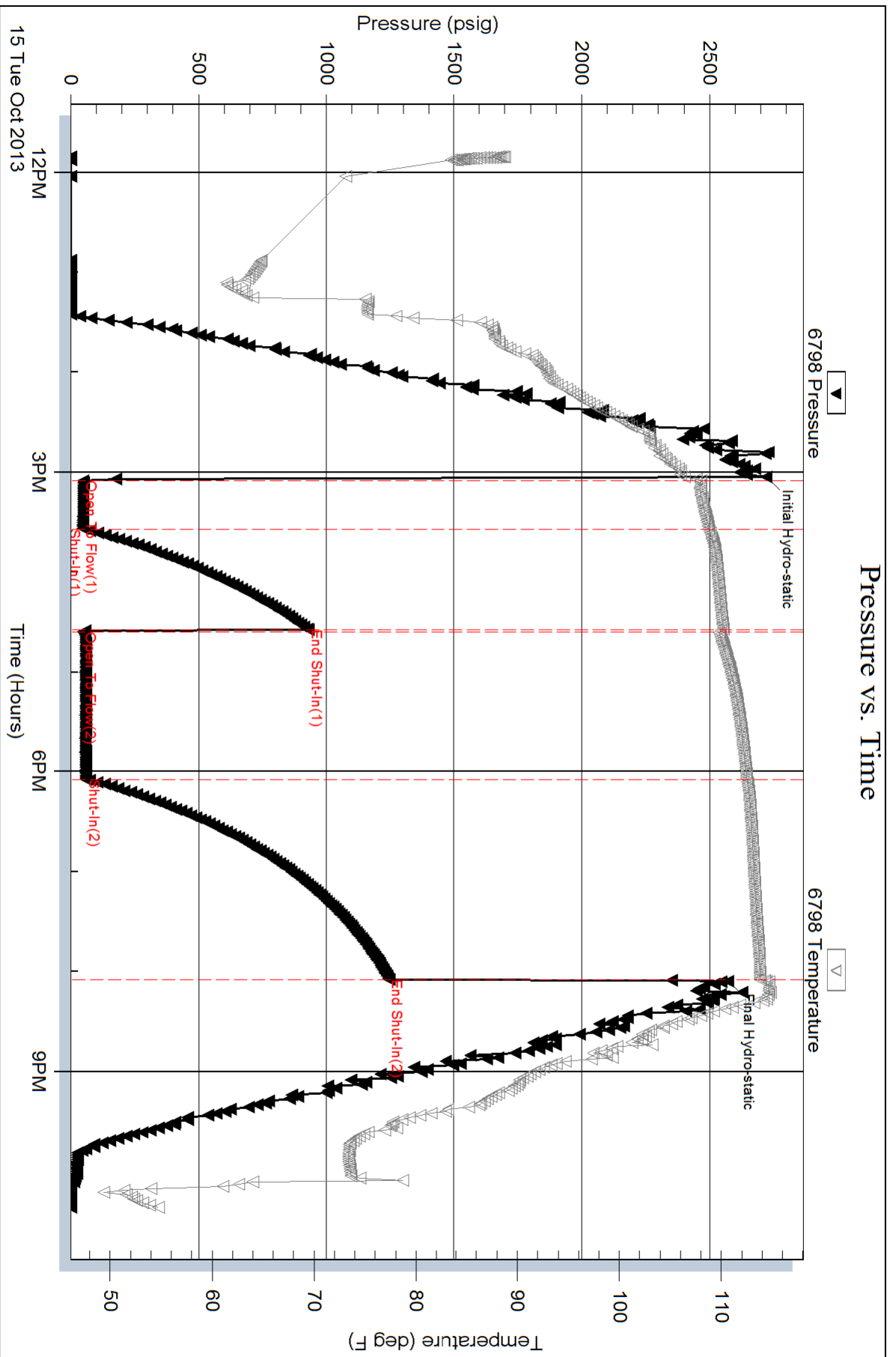
Num Gas Bombs: 0

Serial #:

Laboratory Name:

Laboratory Location:

Recovery Comments:





**TRILOBITE
TESTING, INC.**

DRILL STEM TEST REPORT

Vincent Oil Co

14-29s-22w Ford

155 N Market Ste 700
Wichita Ks 67202

1-14 Sellard

Job Ticket: 52512

DST#: 3

ATTN: Tom Dudgeon

Test Start: 2013.10.17 @ 20:11:50

GENERAL INFORMATION:

Formation: **Mississippi**

Deviated: No Whipstock: ft (KB)

Time Tool Opened: 22:29:05

Time Test Ended: 05:50:35

Test Type: Conventional Straddle (Reset)

Tester: Leal Cason

Unit No: 45

Interval: 5273.00 ft (KB) To 5304.00 ft (KB) (TVD)

Reference Elevations: 2457.00 ft (KB)

Total Depth: 5365.00 ft (KB) (TVD)

2445.00 ft (CF)

Hole Diameter: 7.88 inches Hole Condition: Good

KB to GR/CF: 12.00 ft

Serial #: 6798 Inside

Press @ Run Depth: 177.04 psig @ 5274.00 ft (KB)

Capacity: 8000.00 psig

Start Date: 2013.10.17

End Date:

2013.10.18

Last Calib.: 2013.10.18

Start Time: 20:11:51

End Time:

05:50:35

Time On Btm: 2013.10.17 @ 22:26:20

Time Off Btm: 2013.10.18 @ 03:03:05

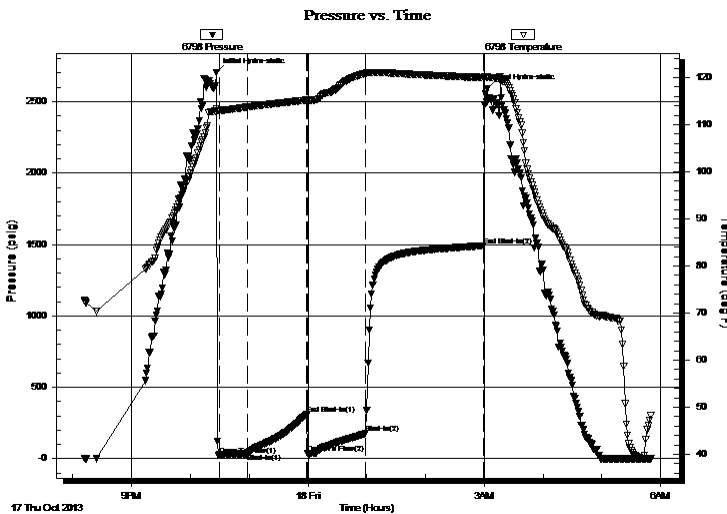
TEST COMMENT: IF: Strong Blow , BOB in 20 seconds

IS: No Blow Back

FF: Fair Blow , BOB in 15 minutes

FS: No Blow Back

PRESSURE SUMMARY



Time (Min.)	Pressure (psig)	Temp (deg F)	Annotation
0	2704.94	113.48	Initial Hydro-static
3	25.89	112.99	Open To Flow (1)
32	37.82	113.74	Shut-In(1)
93	314.24	115.22	End Shut-In(1)
94	36.29	115.12	Open To Flow (2)
153	177.04	120.87	Shut-In(2)
273	1491.13	120.06	End Shut-In(2)
277	2591.87	120.11	Final Hydro-static

Recovery

Length (ft)	Description	Volume (bbl)
0.00	120 GIP	0.00
124.00	Water	1.74
62.00	MCW 20%M 80%W	0.87
124.00	SOWCM 5%O 35%W 60%M	1.74
1.00	Oil	0.01

Gas Rates

Choke (inches)	Pressure (psig)	Gas Rate (Mcf/d)

* Recovery from multiple tests



**TRILOBITE
TESTING, INC.**

DRILL STEM TEST REPORT

FLUID SUMMARY

Vincent Oil Co

14-29s-22w Ford

155 N Market Ste 700
Wichita Ks 67202

1-14 Sellard

Job Ticket: 52512

DST#: 3

ATTN: Tom Dudgeon

Test Start: 2013.10.17 @ 20:11:50

Mud and Cushion Information

Mud Type: Gel Chem

Cushion Type:

Oil API:

deg API

Mud Weight: 9.00 lb/gal

Cushion Length:

ft

Water Salinity:

65000 ppm

Viscosity: 50.00 sec/qt

Cushion Volume:

bbbl

Water Loss: 9.57 in³

Gas Cushion Type:

Resistivity: ohm.m

Gas Cushion Pressure:

psig

Salinity: 4900.00 ppm

Filter Cake: 0.02 inches

Recovery Information

Recovery Table

Length ft	Description	Volume bbbl
0.00	120 GIP	0.000
124.00	Water	1.739
62.00	MCW 20%M 80%W	0.870
124.00	SOWCM 5%O 35%W 60%M	1.739
1.00	Oil	0.014

Total Length: 311.00 ft Total Volume: 4.362 bbl

Num Fluid Samples: 0

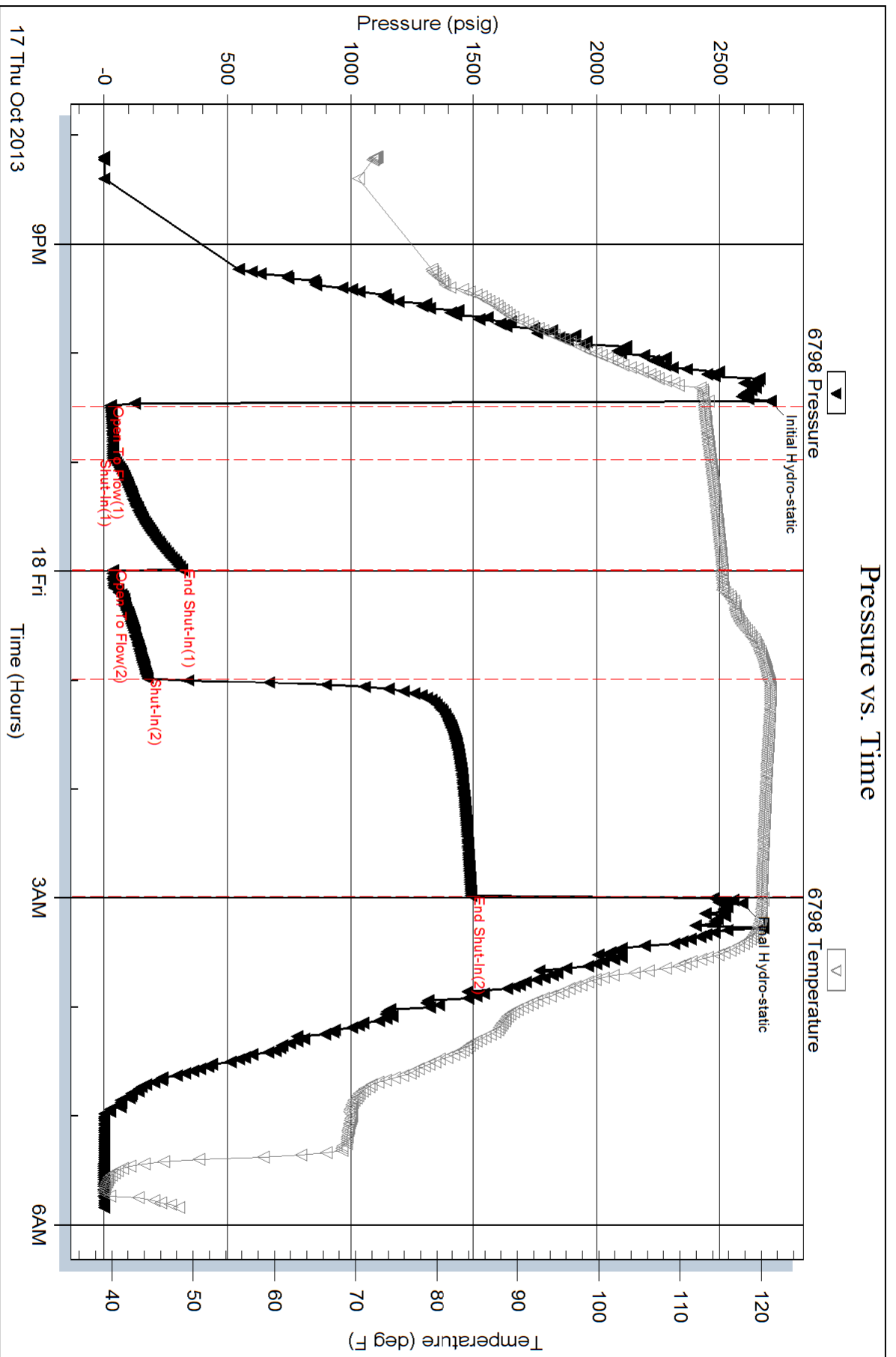
Num Gas Bombs: 0

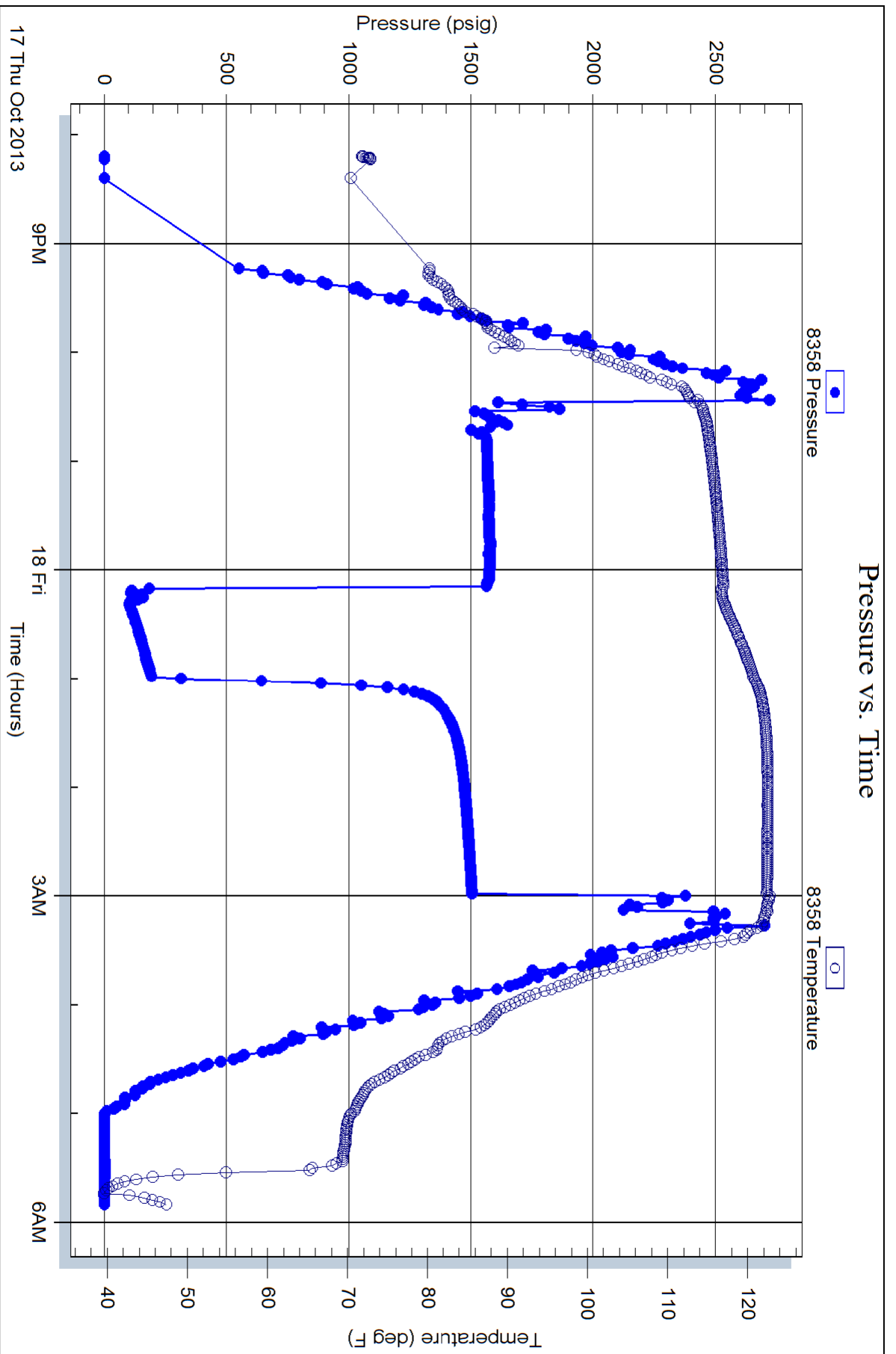
Serial #:

Laboratory Name:

Laboratory Location:

Recovery Comments: RW w as .2 @ 42 degrees







VINCENT OIL CORPORATION



Scale 1:240 Imperial

Well Name: Sellard 1-14
Surface Location: NW NE SE SE 14-29S-22W
Bottom Location:
API: 15-057-20914
License Number:
Spud Date: 10/7/2013 Time: 6:10 PM
Region:
Drilling Completed: 10/18/2013 Time: 11:15 PM
Surface Coordinates: 1212 FSL & 340 FEL
Bottom Hole Coordinates:
Ground Elevation: 2445.00ft
K.B. Elevation: 2457.00ft
Logged Interval: 4200.00ft To: 5620.00ft
Total Depth: 5620.00ft
Formation: MISS
Drilling Fluid Type:

OPERATOR

Company: Vincent Oil Corporation
Address: 155 N Market Ste. 700
Wichita, KS 67202
Contact Geologist: Tom Dudgeon
Contact Phone Nbr: 316-262-3573
Well Name: Sellard 1-14
Location: NW NE SE SE 14-29S-22W
Pool:
State: Kansas
API: 15-057-20914
Field: Kingsdown East
Country: USA

CONTRACTOR

Contractor: Duke Drilling, Inc.
Rig #: 1
Rig Type: Rotary
Spud Date: 10/7/2013 Time: 6:10 PM
TD Date: 10/18/2013 Time: 11:15 PM
Rig Release: 10/19/2013 Time: 12:00 AM

ELEVATIONS

ELEVATIONS

K.B. Elevation: 2457.00ft
K.B. to Ground: 12.00ft

Ground Elevation: 2445.00ft

SURFACE CO-ORDINATES

Well Type: Vertical
Longitude: -99.6850736 Latitude: 37.5152296
N/S Co-ord: 1212 FSL
E/W Co-ord: 340 FEL

OPEN HOLE LOGS

Logging Company: Nabors Completeion and Production Services Co.
Logging Engineer: Jason Cappellucci
Truck #: 680
Logging Date: 10/17/2013 Time Spent: 6
Logs Run: 4 # Logs Run Successful: 4

LOGS RUN

Tool	Logged Interval	Logged Interval	Hours	Remarks	Run #
Dual Induction	0.00ft	5365.00ft	2.00		1
Comp Den/Neu	4250.00ft	5343.00ft	2.00		1
Micro	4250.00ft	5349.00ft	4.00		2
Sonic	600.00ft	5357.00ft	4.00		2
Sonic	5100.00ft	5608.00ft	1.00		3

LOGGING OPERATION SUMMARY

Date	From	To	Description Of Operation
10/17/2013	0.00ft	5365.00ft	Logs Ran Successfully
10/19/2013	5100.00ft	5608.00ft	Sonic Ran from 5100 to DDTD

CASING SUMMARY

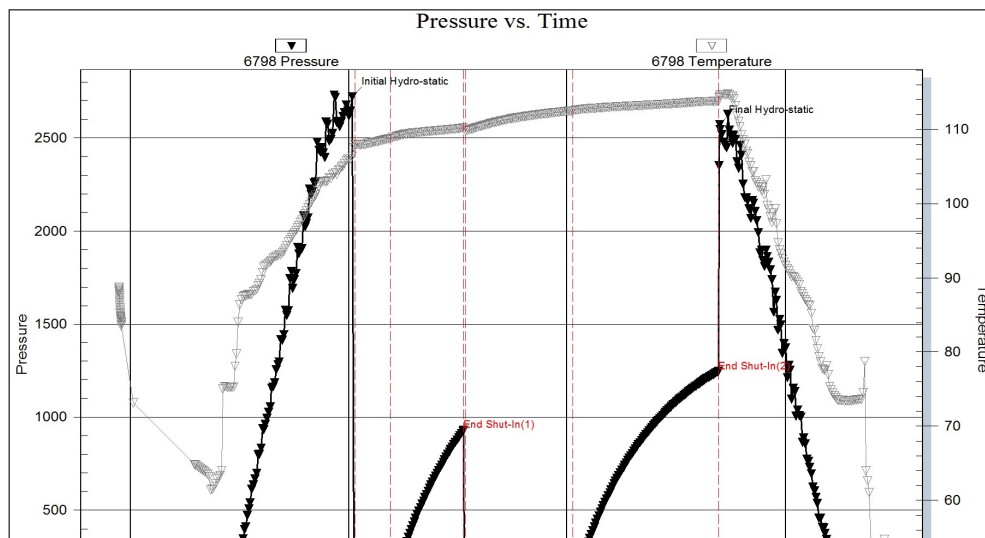
	Surface	Intermediate	Main		
Bit Size	12.25 in		7.88 in		
Hole Size	12.25 in		7.88 in		
	Size	Set At	Type	# of Joints	Drilled Out At
Surf Casing	8.625 in	610 ft	#23	14	10/8/2013 12:00 PM
Int Casing					
Prod Casing	5.5 in	5403 ft	#14	129	10/19/2013 11:30 PM

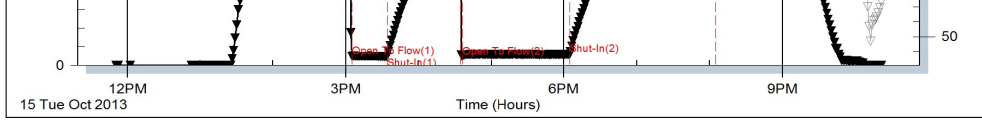
CASING SEQUENCE

Type	Hole Size	Casing Size	At
	0.00 in	0.00	0.00 ft

DST #1

Serial #: 6798 Inside Vincent Oil Co Sellard #1-14 DST Test Number: 1





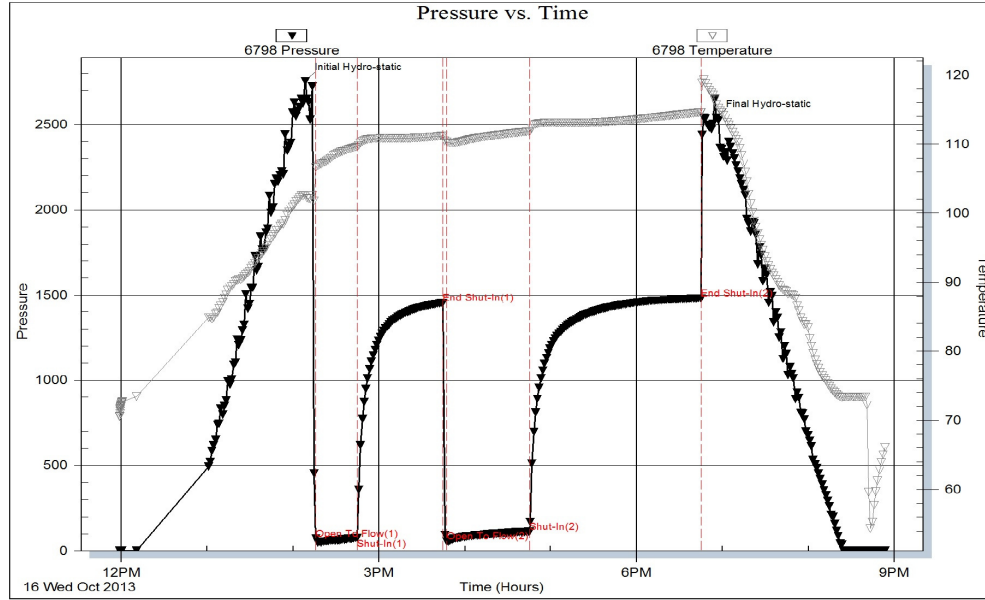
Trilobite Testing, Inc

Ref. No: 52510

Printed: 2013.10.18 @ 10:50:00

DST #2

Serial #: 6798 Inside Vincent Oil Co Sellard #1-14 DST Test Number: 2



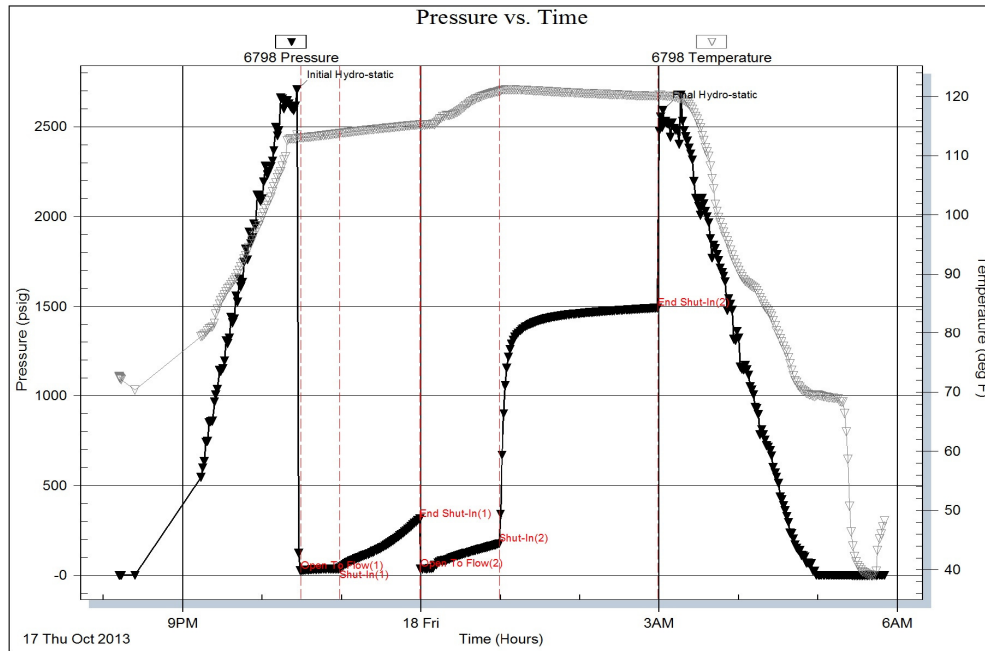
Trilobite Testing, Inc

Ref. No: 52511

Printed: 2013.10.18 @ 10:50:56

DST #3

Serial #: 6798 Inside Vincent Oil Co Sellard #1-14 DST Test Number: 3



DST #3 Bottom Packer

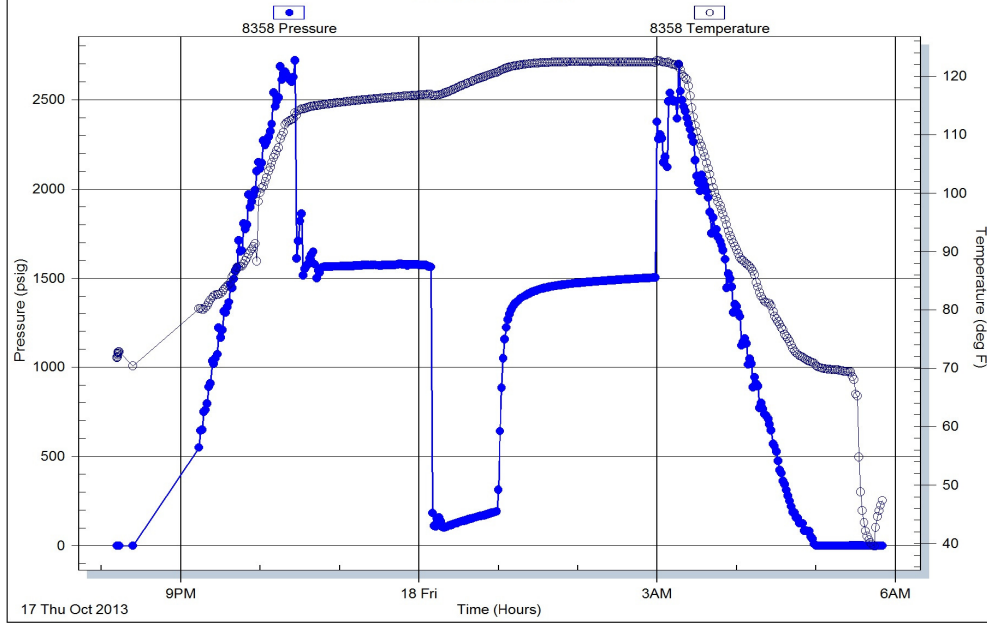
Serial #: 8358

Below (Straddle) Oil Co

Sellard #1-14

DST Test Number: 3

Pressure vs. Time

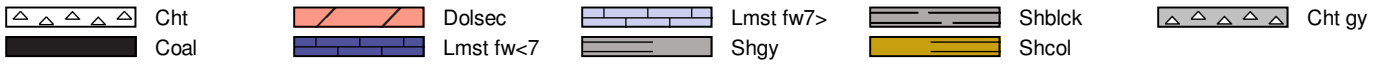


Tribolite Testing, Inc

Ref. No: 52512

Printed: 2013.10.18 @ 10:55:44

ROCK TYPES



ACCESSORIES

MINERAL

- ▲ Chert, dark
- ∟ Dolomitic
- ∩ Glauconite
- P Pyrite
- Sandy
- Silty
- ◊ Detrital dolomite
- △ Chert White

FOSSIL

- ◇ Brachiopod
- ∩ Coral
- Crinoids
- F Fossils < 20%
- ⊗ Gastropod
- ⊕ Oolite

STRINGER

- Coal
- ▨ Dolomite
- ▨ Limestone
- ▨ Siltstone
- ▨ Shale

TEXTURE

- C Chalky
- e Earthy
- FX Finexln

MISC

- ∩ Fractures

OTHER SYMBOLS

POROSITY TYPE

- x Intercrystalline
- ∅ Interoolitic
- V Vuggy
- P Pinpoint
- ∩ Moldic
- O Organic
- F Fracture
- e Earthy
- Fenestral

OIL SHOWS

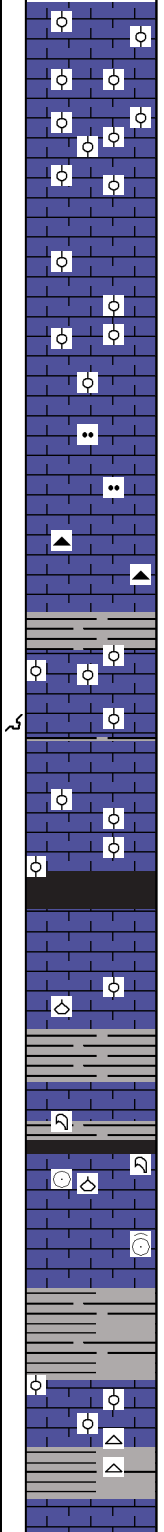
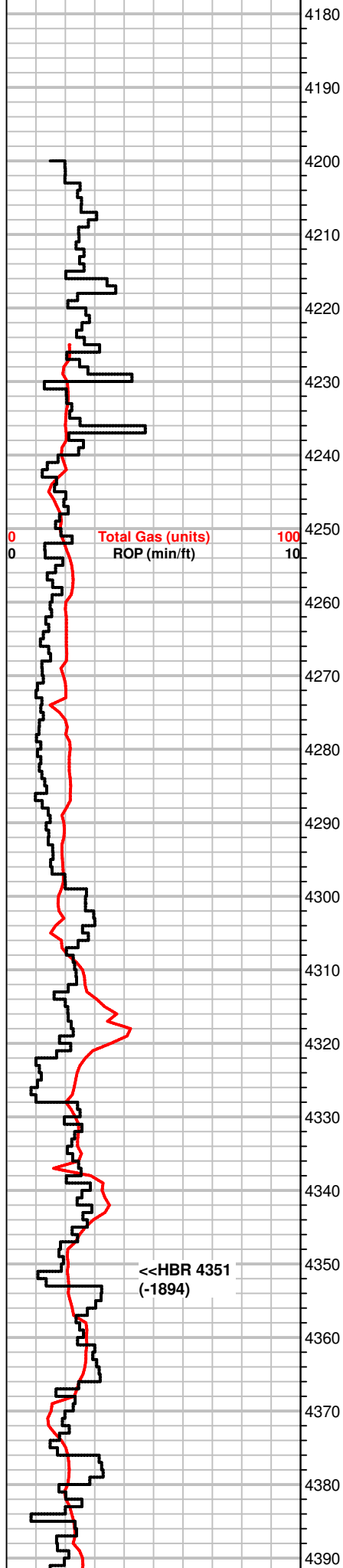
- Even Stn
- Spotted Stn 50 - 75 %
- Spotted Stn 25 - 50 %
- Spotted Stn 1 - 25 %
- Questionable Stn
- D Dead Oil Stn
- Fluorescence

INTERVALS

- Core
- DST

Printed by GEOstrip VC Striplog version 4.0.7.0 (www.grsi.ca)

Curve Track #01		Depth Intervals	Porosity Types	Interpreted Lithology	Oil Shows	Geological Descriptions	Comment
Total Gas (units)	ROP (min/ft)						
1:240 Imperial							
0	100	4150					
0	10	4160					
		4170					



MS, tan to gray, f-xln, oolitic pcs throughout, dense,
 Some SH, green

MS-WS, crm to tan, f-xln, dense, rare oomoldic pcs, oolitic f to m-
 gr abundt.
 SH, gray

MS, crm to tan, A.A., dull fluor, NS
 Incr, SH, dk gray, gray

MS, tan, f-xln, dense, fossilif., oolitic,

MS, tan, f-cn, firm, rare silty pcs

MS, crm, tan, black specs, firm, silty txt in majority pcs, dull fluor,
 NS,
 Chert, gray

MS, A.A, micro-oolitic pcs common
 SH, gray

MS, crm to brn, mottled pcs, predominately crm, f-xln, hard, sli
 edge stn in dry, moldic por.

MS, crm to off white, f-xln, firm to hard, sli. micro oolitic,
 some SH, Black

SH, black

MS, crm to gray, f-xln, firm to hard, some fossil fragments,
 SH, black

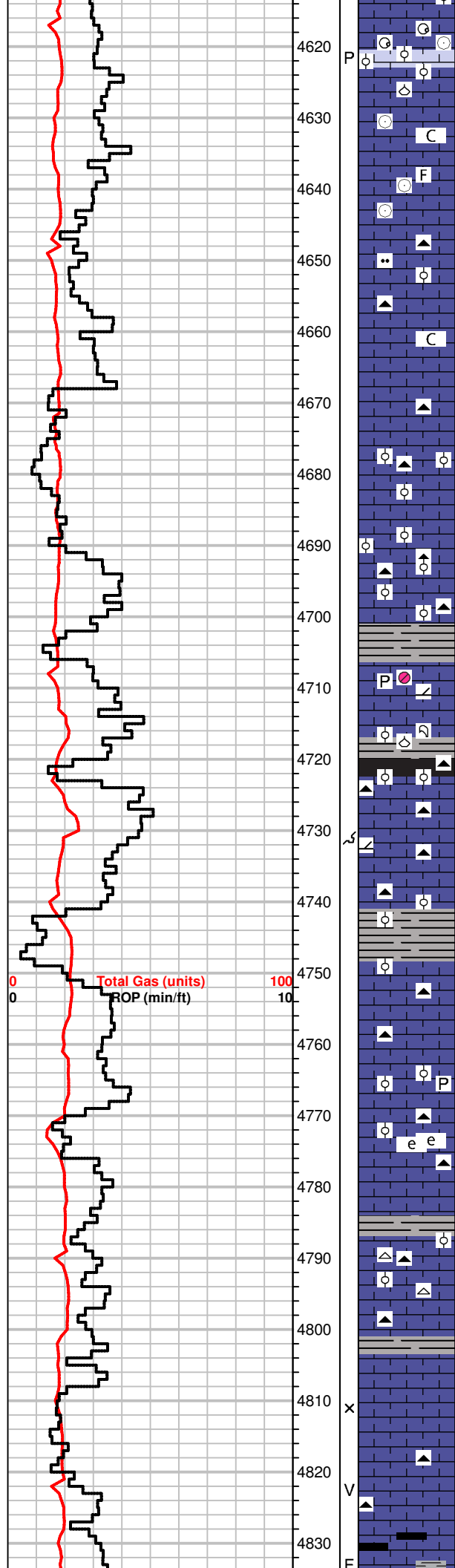
MS, tan, f-xln, dense, fossilif, carrying SH, blk

MS, gray to brn, mottled, hard, f-xln, fossil frgmts, crinoids
 SH, gray

MS, tan, some mottled brn w/ black specs, some oolitic in part,
 dense, NS
 SH, green, gray
 Chert, white

MS, crm to tan, m-xln, firm, f-n-gr oolitic, rare pyrite, NS, rare vuggy

<<HBR 4351
 (-1894)



4620 P WS-MS, gray to brn, some crm, oolitic w/ gray ooids, m-gr, fossilif
brn pcs abundt.

4630 MS, crm to lt, gray, f to m-xln, rare dk, gray f-xln, fossilif, dense,
some pcs chalky

4640 MS, lt, tan, vf-xln, hard, dense, MS, brn, f-xln, fossilif, dense, few
pcs dull fluor, NS

4650 MS, crm, vf-xln, some mic-xln pcs, gritty txt, hard, some gray silty
pcs, firm, NS
Chert, lt. gray, bluish-gray

4660 MS, crm to gray, A.A., inc in gray pcs, rare chalky pcs

4670 SH, gray, green,
MS, gray to tan, f-xln, firm, rare dense pcs
Chert, dk, gray, blocky, some w/ white edges

4680 MS, crm to gray, f-xln, chalky, fossilif pcs abdt.
Chert, gray, brn, micro-oolitic

4690 MS, crm, brn, gray, f-xln, f-gr oolitic, firm some hard pcs, silty txt,
rare dull fluor, NS
Chert, black, blocky

4710 SH, gray, green
MS, crm, cpvt-xln, hard, dense, rare dolomitic pcs, some f-gr f-
xln, pyrite

4720 SH, dk gray, green
MS, A.A. fossilif in part, Chert, black

4730 MS, crm f-ln, dense, oolitic in part, vuggy por, some dolomitic pcs,
sucrosic, co-gr, Chert, gray, translucent

4740 MS, crm, lt. tan, mic-xln, dense, dull mineral fluor, NS

4750 MS, crm, f-xln dense, A.A., some brn m-gr oolitic pcs,
SH, gray green

4760 MS, crm, f-xln, hard, some dolomite, crm, vf-suc, f-xln, mineral
fluor, NS, Chert, gray

4770 MS, crm to gray, f-xln, dense, fossilif in part, pyrite, NS

4780 MS, crm to tan, mic-xln, earthy in part, silty gritty txt
Chert, black, white, spicules/fossilif

4790 SH, black
MS, crm to gray, f-xln, firm to hard, fossilif pcs

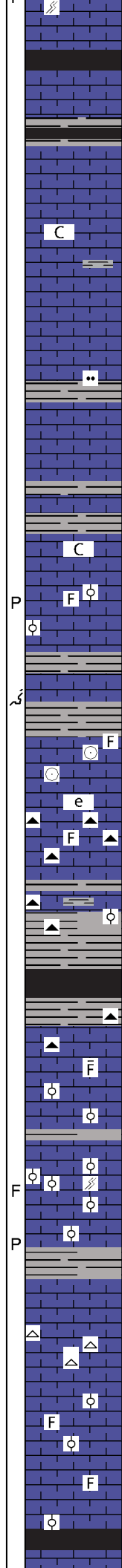
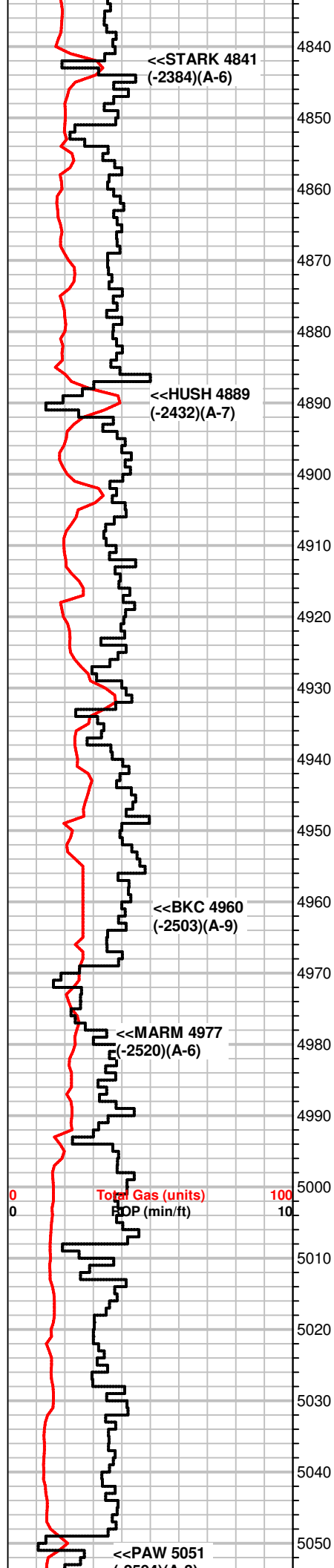
4800 MS, gray to brn, some tan, f-xln, firm to hrad, pyrite, fossils, black
specs, sli mottled pcs
Chert, white, spicules, black blocky pcs

4810 MS, crm to off white, f-xln, chalky in partr, hard/dense,
Some SH, gray

4820 MS, crm to off white, A.A.

4830 MS, lt. brn to crm, mic to f-xln, dense, NS
Chert, gray

MS, brn to gray, vf-xln, dense, dull fluor, fracture por.
SH, black, gray



SH, black, carb.

MS, crm to brn, f-xln, dense, NS

MS, crm to brn, inc in crm samples, f-xln, dense, NS

MS, crm to off white, f-xln, some dense mic-xln, chalky pcs scatt., carrying SH, gray

MS, crm to lt. tan, A.A, some gritty txt, fractures, dull fluor, NS

MS, A.A. rare brn, pcs, earthy txt.

Influx, SH, black, dk gray, green

MS, crm to brn, some gray, f-xln, dense, NS
SH, gray, some silty

SH, green, gray, rare black
MS, crm to brn, some mottled, firm, chalky

MS, lt. gray to tan, f-xln, hard, some fossilif, dense in part, dull fluor, NS
SH, blk, gray

MS, crm to gray, rare mottled, fossilif in part, hard, no stn, no fluor, no odor, NS
SH, gray, green, black

MS, gray, tan, brn, black specs, m-xln, mottled, chalky pcs, fossils (crinoids) scatt., carrying SH, dk. gray green

MS, brn, gray, tan, mottled, earthy, hard, some fossils, dull fluor, NS, Chert, gray, fossilif.

MS, brn, tan gray, mottled, hard, suboolitic in part
SH, dk. gray, gray green

MS, A.A. some Chert, black, fossilif.
SH, gray green,

SH, black, dk. gray, gray, green, silty in pcs
MS, tan to brn, f-xln, dense, Chert, black, fossilif.

MS, crm to gray, f to m-xln, fractured, some pcs, fossilif, hard, NS

SH, gray, green,
MS, brn to crm, f-xln, suboolitic pcs, some fractures, some fossils, gritty in part

MS, crm to gray, f-xln, dense, some chalky, rare pin point por. NS

Sh, green, silty
MS, crm to lt. brn, f-xln, hard, dense, NS

MS, crm, tan, f-xln, dense, tite matrix, Chert, white, fossilif some SH, blk, gray, green

MS, crm, tan, f-xln, A.A.

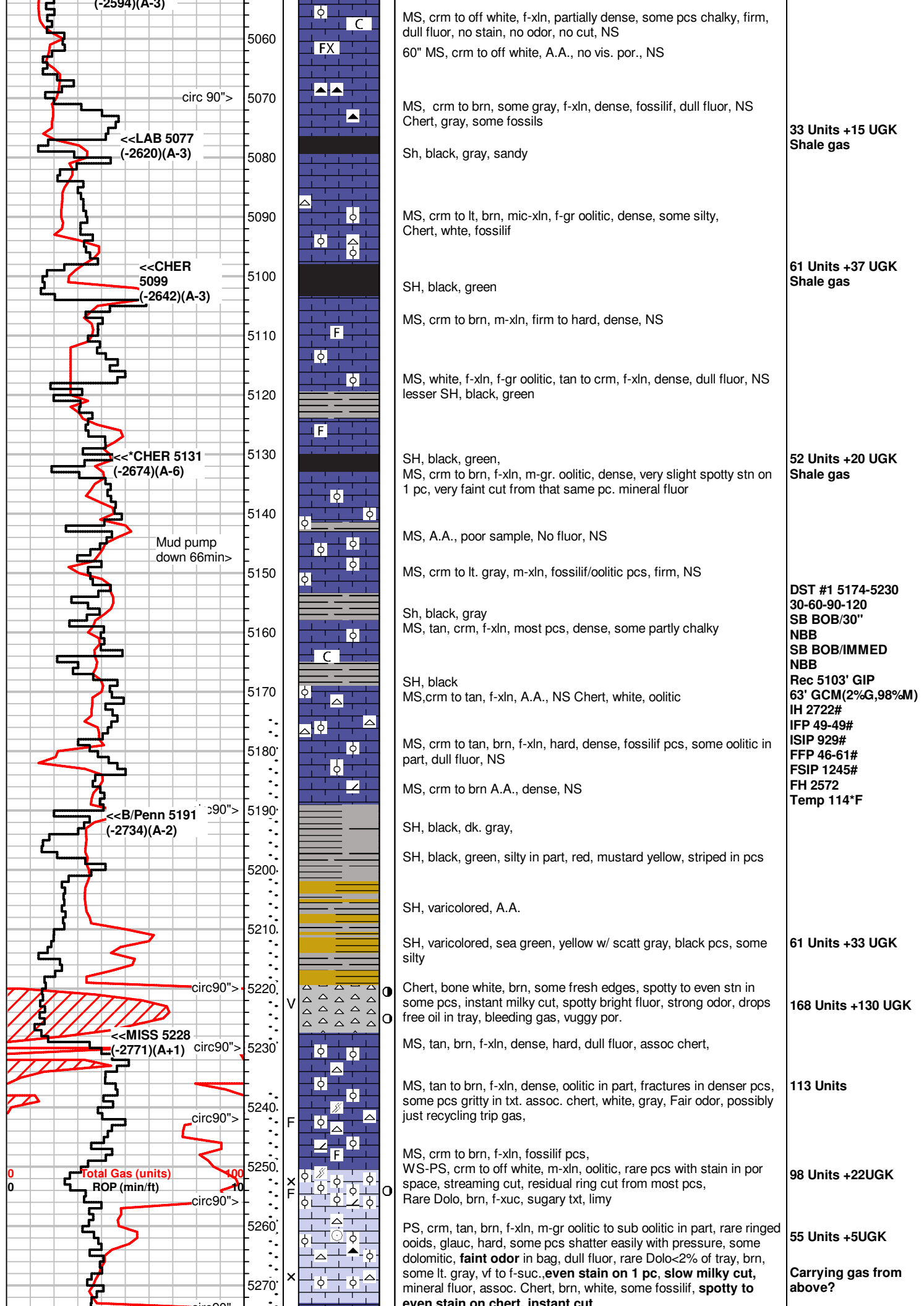
MS, crm to tan, A.A. dense, NS

SH, black, gas bubbling out in tray

33 Units +16UGK Shale Gas

39 Units +20UGK Shale Gas

21 Units +8 UGK Shale Gas



33 Units +15 UGK
Shale gas

61 Units +37 UGK
Shale gas

52 Units +20 UGK
Shale gas

DST #1 5174-5230
30-60-90-120
SB BOB/30"
NBB
SB BOB/IMMED
NBB
Rec 5103' GIP
63' GCM(2%G,98%M)
IH 2722#
IFP 49-49#
ISIP 929#
FFP 46-61#
FSIP 1245#
FH 2572
Temp 114°F

61 Units +33 UGK

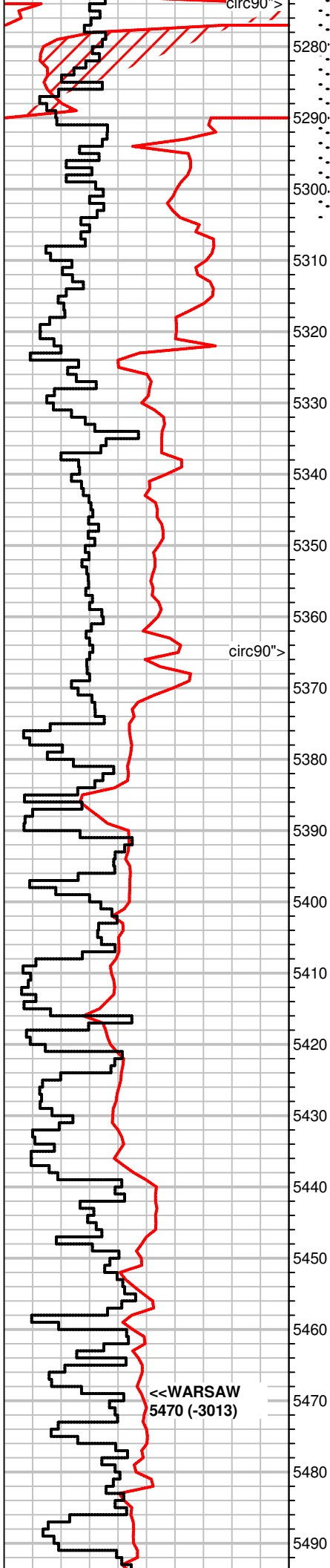
168 Units +130 UGK

113 Units

98 Units +22UGK

55 Units +5UGK

Carrying gas from above?



5280' Poor samples, Mostly MS-WS, crm to tan, f-xln, dense, some pcs oolitic,

5290' Dolo, crm to brn, f-suc, some pcs m-xln, **spotty stn, good odor, instant streaming cut**

5300' MS, crm to lt. tan, f-xln, firm, fractured pcs, **spotty stn, stn in PP por., odor in bag, instant streaming cut**

5310' Dolo, crm to brn, f-suc to m-xln, **spotty stn, instant cut, odor in bag**

5320' MS, crm to off white, f-xln, **fair odor in bag, spotty stn, streaming cut**, assoc. Chert, white, some fossilif.

5330' Dolo, brn, m-xln, very spotty stn, slow/faint milky cut

5340' WS-PS, crm to off white, f-xln, oolitic in part, dense, rare stn, rare bright fluor, carrying from above? assoc Chert, white

5350' Dolo, lt. gray to brn, f-suc., mineral fluor, NS

5360' MS, off white, f-xln, dense, oolitic pcs
Chert, white,

5370' MS-WS, crm to off white, hard, dense, increasing chalky pcs, oolitic pcs, m-gr ooids, NS
Rare Dolo, brn, lt. gray, f-suc., dull mineral fluor, NS

5380' WS, crm to off white, f-xln, mostly oolitic pcs, chalky pcs throughout, rare Dolo, brn, f-suc, A.A., rare spotty stn in dry

5390' WS, off white, some crm, f-xln, dense, assoc Chert, white, some fossilif.

5400' MS-WS, A.A, chalky in part, Chert, white, dirty white

5410' Dolo, brn, f-n suc, some pcs m-xln, bright nim. fluor, NS

5420' MS, white to tan, f-xln, white pcs oolitic

5430' Dolo, brn, m-xln, some pcs shatter/fracture when pressed on

5440' MS-WS, off white, f-xln, oolitic, m-gr,
Dolo, brn, m-xln, mineral fluor, NS

5450' Dolo, crm to brn, fn-suc, brn pcs m-xln, rare dolo pcs with spotty stn, inst. cut, no odor.
rare WS crm to off white, f-xln, oolitic

5460' Dolo, A.A., brn to tan, f-xln, f-suc, some m-xln, dense pcs, NS

5470' Dolo, A.A, NS

5480' Dolo, A.A., NS, scatt Chert, white

5490' Dolo, A.A. NS

Influx Dolo, gray to crm, f-xln, f-suc, rare glauc. NS

Dolo, crm to gray, m-xln, some f-suc, rare glauc

Dolo, gray, f-xln to f-suc., NS

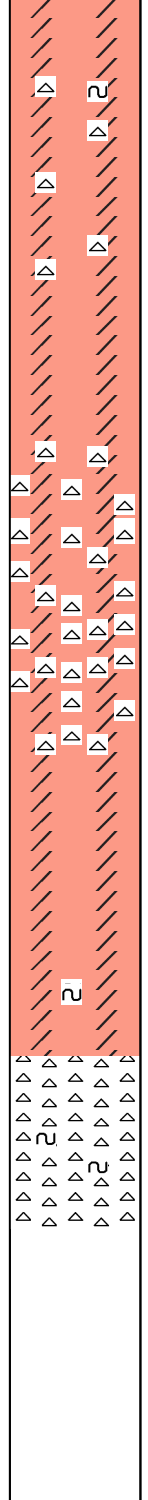
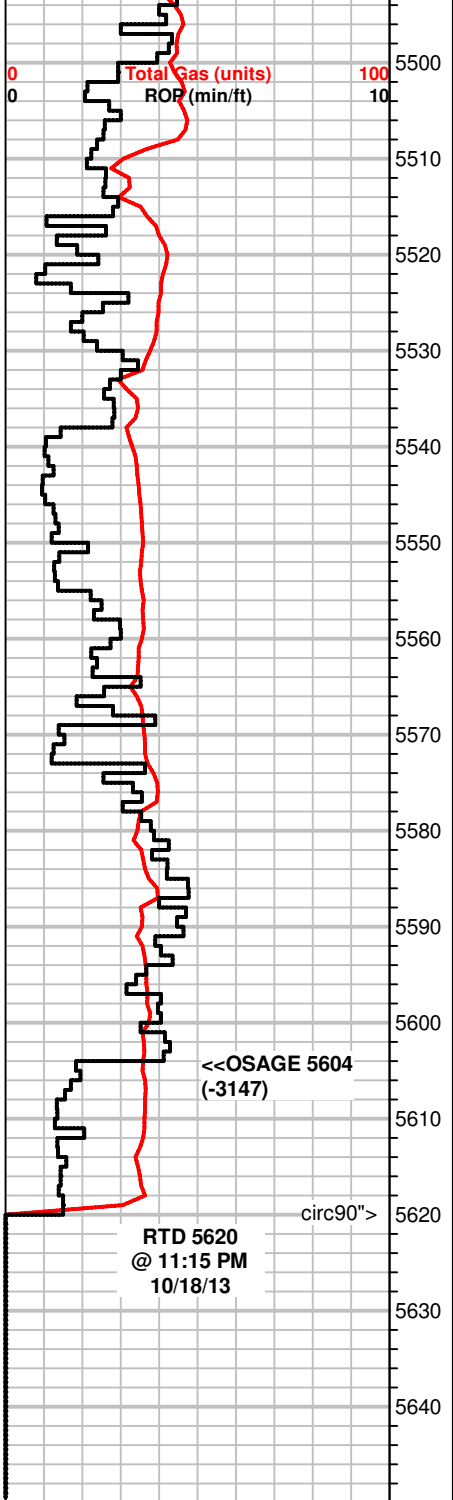
Dolo, tan to gray, f-suc, some glauc specs, rare fossils

Trip Gas

138 Units +20 UGK

DST#2 5237-5274
30-60-60-120
SB BOB/15" GTS/18'
GA 1/4IN CHOKE
67MCFG/20'
67MCFG/30'
SURF BB
SB BOB/IMMED
GA 1/4IN CHOKE
86.3MCFG/10'
95.819MCFG/20'
102.164MCFG/30'
118.028MCFG/40'
118.028MCFG/50'
118.028MCFG/60'
SURF BB
REC 5131' GIP
100' SOSM
IH 2745#
IF 71-76#
ISIP 1455#
FF 56-113#
FSIP 1481#
FH 2540#
TEMP 115°F

DST#3 5273-5304
30-60-60-120
SB BOB/20"
NBB
FB BOB/15'
NBB
REC 120' GIP
1' O
124' SOWCM
62' MCW
124' W
IH 2705#
IF 26-38#
ISIP 314#
FF 36-177#
FSIP 1491#
FH 2592#
TEMP 120°F
CL 65,000
API .2 @ 42°F
STRADDLE PACKER
FAILURE @ 2ND OPEN



Dolo, tan to gray, f-suc, rare pyrite, glauc
Chert, white,

Dolo, crm to gray, A.A., scatt. Chert, white, translucent

Dolo, crm to gray, lots of glauc, f-xln, partially suc., scatt Chert,
clear -white, opaque pcs

Dolo, A.A.

Chert, white, lt. gray, some translucent white pcs,

Chert, clear, gray, white, some pcs, gray w/ white striations, milky
white, some with nodules of white in translucent pcs

Chert, decreasing amount, white A.A., rare yellowish brown, rare
white pcs with weathered edges

Dolo, gray, f-suc, gritty txt, NS

Dolo, gray, A.A. rare glauc

Dolo, A.A.

Dolo, gray to crm, f-xln to f-suc., mottled looking pcs, glauc sparse