

# Geologic Report

Drilling Time and Sample Log

Operator <b>American Warrior, Inc.</b>		KB Elevation 2234'
Lease <b>Carl-Betty</b> No. <b>2-19</b>		DF 2226'
API # <b>15-135-25716-0000</b>		GL 2226'
Field <b>Schoolhouse North SE</b>		Casing Record Surface 8 5/8" @ 223'
Location <b>1475' FSL &amp; 2000' FEL</b>		Production None
Sec. <b>19</b> Twp. <b>17s</b> Rge. <b>21w</b>		Electrical Surveys None
County <b>Ness</b> State <b>Kansas</b>		

Drilling Contractor **Discovery Drilling Co. Inc.** Rig #3  
 Commenced **1-11-2014** Completed **1-16-2014**  
 Samples Saved From **3950'** To **RTD**  
 Drilling Time Kept From **3600'** To **RTD**  
 Samples Examined From **3950'** To **RTD**  
 Geological Supervision From **3950'** To **RTD**

Displacement **3500'** Mud Type **Chemical**

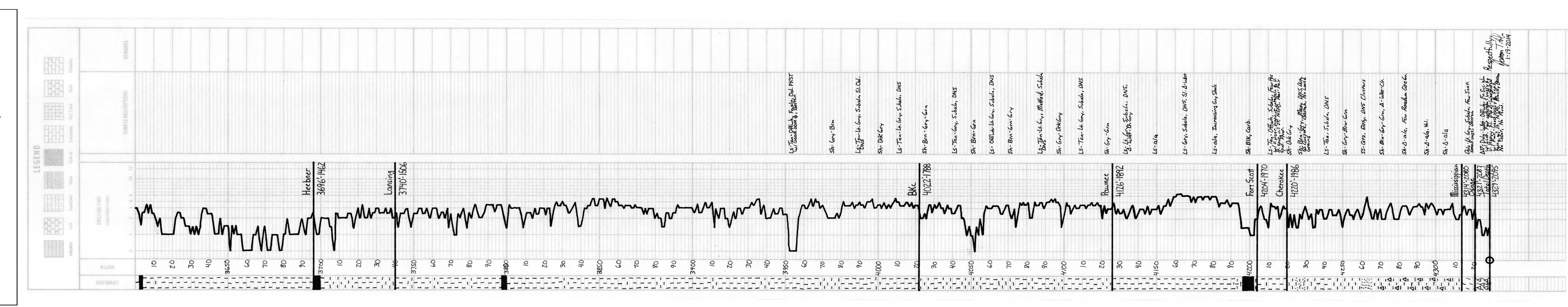
### Summary and Recommendations

The location for the Carl-Betty #2-19 was found via 3-D seismic survey. The new well ran structurally as expected via the survey on all datums except for the Mississippian. No drill stem tests were run due to lack of shows. After all gathered data had been examined the decision was made to plug and abandon the Carl-Betty #2-19 well.

Formation	Log Tops	Sample Tops	Struct Comp
Anhydrite Base		1533' +701	+2
Heebner		3696' -1462	+4
Lansing		3740' -1506	+8
BKc		4022' -1788	
Pawnee		4126' -1892	
Fort Scott		4204' -1970	+4
Cherokee		4220' -1986	+6
Mississippian		4314' -2080	+3
Osage		4321' -2087	+3
Total Depth		4329' -2095	

Respectfully Submitted,  
 Jason T Alm  
 Hard Rock Consulting, Inc.

Reference Well For Structural Comparison DNB Drilling Stieben #1  
 C SW SE Sec. 19 T17s R21w Ness Co. Kansas



Respectfully,  
 Jason T Alm  
 1-19-2014