



**TRILOBITE  
TESTING, INC.**

# DRILL STEM TEST REPORT

Great Plains Energy, Inc  
6121 S. 58th St. Suite B  
Lincoln, NE. 68516  
ATTN: Mike Madcharo

**8-7s-18w-Rooks**

**Odle #1-8**

Job Ticket: 50430

**DST#: 1**

Test Start: 2013.06.10 @ 19:11:45

## GENERAL INFORMATION:

Formation: **Oread**

Deviated: No Whipstock: 0.00 ft (KB)

Time Tool Opened: 20:44:45

Time Test Ended: 02:52:15

Test Type: Conventional Bottom Hole (Initial)

Tester: Jason McLemore

Unit No: 54

**Interval: 3068.00 ft (KB) To 3115.00 ft (KB) (TVD)**

Reference Elevations: 1945.00 ft (KB)

Total Depth: 3115.00 ft (KB) (TVD)

1937.00 ft (CF)

Hole Diameter: 7.80 inches Hole Condition: Good

KB to GR/CF: 8.00 ft

**Serial #: 8789**

**Inside**

Press @ Run Depth: 105.64 psig @ 3104.00 ft (KB)

Capacity: 8000.00 psig

Start Date: 2013.06.10

End Date:

2013.06.11

Last Calib.:

2013.06.11

Start Time:

19:11:47

End Time:

02:52:15

Time On Btm:

2013.06.10 @ 20:44:00

Time Off Btm:

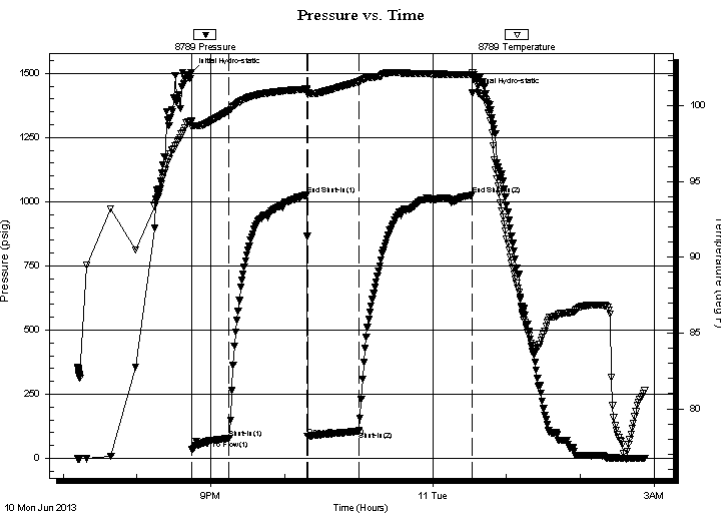
2013.06.11 @ 00:32:15

TEST COMMENT: IFP-Fair Blow , Built to 8-1/2"

ISI-Dead

FFP-Weak Blow , Built to 3"

FSI-Dead



## PRESSURE SUMMARY

Time (Min.)	Pressure (psig)	Temp (deg F)	Annotation
0	1502.34	98.97	Initial Hydro-static
1	33.84	98.59	Open To Flow (1)
31	78.27	99.66	Shut-In(1)
94	1027.15	101.08	End Shut-In(1)
95	86.97	100.77	Open To Flow (2)
136	105.64	101.56	Shut-In(2)
228	1027.18	102.02	End Shut-In(2)
229	1423.77	102.19	Final Hydro-static

## Recovery

Length (ft)	Description	Volume (bbl)
175.00	VSOCMW-3%O-87%W-10%M	1.36
25.00	Free Oil	0.35

## Gas Rates

	Choke (inches)	Pressure (psig)	Gas Rate (Mcf/d)



**TRILOBITE  
TESTING, INC.**

# DRILL STEM TEST REPORT

## FLUID SUMMARY

Great Plains Energy, Inc  
6121 S. 58th St. Suite B  
Lincoln, NE. 68516  
ATTN: Mike Madcharo

**8-7s-18w-Rooks**  
**Odle #1-8**  
Job Ticket: 50430      **DST#: 1**  
Test Start: 2013.06.10 @ 19:11:45

### Mud and Cushion Information

Mud Type: Gel Chem	Cushion Type:	Oil API: 26 deg API
Mud Weight: 9.00 lb/gal	Cushion Length: ft	Water Salinity: 36000 ppm
Viscosity: 55.00 sec/qt	Cushion Volume: bbl	
Water Loss: 7.99 in <sup>3</sup>	Gas Cushion Type:	
Resistivity: ohm.m	Gas Cushion Pressure: psig	
Salinity: 2200.00 ppm		
Filter Cake: inches		

### Recovery Information

Recovery Table

Length ft	Description	Volume bbl
175.00	VSOCMMW-3%O-87%W-10%M	1.362
25.00	Free Oil	0.351

Total Length: 200.00 ft      Total Volume: 1.713 bbl  
Num Fluid Samples: 0      Num Gas Bombs: 0      Serial #:  
Laboratory Name:      Laboratory Location:  
Recovery Comments:

