



Dolomite

Chart

Ool. Lime

Limestone

Carb sh

Shale

Sandstone

Salt

LING TIME IN MINUTES

PER FOOT

of Penetration Decreases

5" 10" 15" 20" 25"

DEPTH

1400

Anhydrite

Elog 1425

cx

1450

Base Anhydrite

Elog 1458

cx

Not

Recorded

2800

cx

2850

cx

2900

Topoksa

Elog 2900

cx

REMARKS

Survey @ 220 ft. 1/2"

Change pump gauge

Mud wt: 8.8  
Visc: 67 ccm / #

OIL SHOWS

SAMPLE DESCRIPTIONS

Samples are lagged

LS, cm. lbr. g br, f-c gn wst, dns, fs lf, w/ mst towards base, tr. glauc.

SH, g-dg. Jgn, w/ pyrite

LS, mm. sl. ool. w/ tr glauc. NSO

SH, g. rbr. w/ tr. pink & ylw

LS, cm. lbr. y, f-c gn, dns, NSO w/ minor wt mst, w/ pyr.

SH, dg. g, w/ locc rbr

LS, cm. y. g, ool. post in upper, m-c gn wst below, tr glauc. NSO

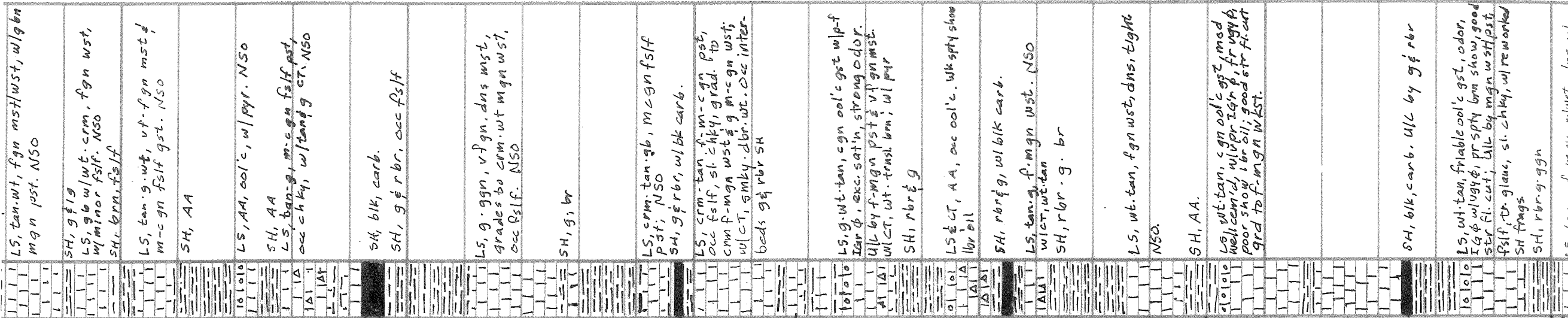
SH, g

LS, yg. gbr. gng. tan, f-c gn wst, occ. flf, w/ occ. tan vfx in mst, dns tight, occ. chalky. Occ. interbeds g SH, occ. flf

SH, g & l g

LS, tan-wt, fgn mst wst, w/ gbr mgn post. NSO

Mud Wt.: 8.8  
Visc: 67 ccm/1#



ck	2950	LS, tan. wt, fgn mst/wst, w/fgn mgn pst. NSO
ck	3000	SH, g & l g LS, g & w/wt. crm, fgn wst, w/minor fsif. NSO SH, brn, fsif
ck	3050	LS, tan. g. wt, vt. fgn mst, m-cgn fsif gst. NSO SH, AA
ck	3100	LS, AA, ool'c, w/ pyr. NSO SH, AA LS, tan. g, m-cgn fsif pst, occ chky, w/ tan g cr. NSO
ck	3150	SH, blk, carb. SH, g & r br, occ fsif
ck	3200	LS, g. ggn, vt. fgn, dns wst, grades to crm. wt mgn wst, occ fsif. NSO
ck	3250	SH, g, br
ck	3300	LS, crm. tan. gb, m-cgn fsif pst; NSO SH, g & r br, w/ blk carb.
ck	3350	LS, crm. tan. f. m-cgn pst, occ fsif, sl. chky, grad. to crm f-mgn wst & g m-cgn wst; w/ CT, smky. dbr. wt. Occ interbeds g & r br SH
ck	3400	LS, g. wt. tan, cgn ool'c gst w/ f-ign & . exc. sat'n, strong odor. Ull by f-mgn pst & vt. fgn mst. w/ CT, wt. trnsh. brn; w/ pyr SH, r br & g
ck	3450	LS & CT, AA, occ ool'c. Wk sply show lbr oil
ck	3500	SH, r br & g, w/ blk carb.
CFS	3550	LS, tan. g. f. mgn wst. NSO w/ CT, wt. tan SH, r br. g. br
ck	3600	LS, wt. tan, fgn wst, dns, tight NSO.
ck	3650	SH, AA.
ck	3700	LS, wt. tan, cgn ool'c gst, mod well cement, w/ pyr ign & fr vgy ch poor show lbr oil; good str. fi. cut grad to f-mgn wst.
ck	3750	SH, blk, carb. Ull by g & r br
CFS	3800	LS, wt. tan, friable ool'c gst, odor, Ig & w/ vgy & pr sply brn show, good str. fi. cut; Ull by mgn wst, pst. fsif, dr. glue, sl. chky, w/ reworked SH frags
ck	3850	SH, r br. g. gh
ck	3900	LS, tan. r. f. mgn mlwst. Ans. w.

DST No. 1

3068-3115 ft; 30.60.45.90  
Hyd: 1502/1424  
IFP: 34/87 ISIP: 1027  
FFP: 78/106 FSP: 1627  
IF: Fair blow, built to 8 1/2"  
IS: Dead  
FF: Wk blow, built to 3"  
FSI: Dead

Rec. 200' fluid:  
25' Free Oil (grav 26)  
175' V50CMW:  
3% O, 87% W, 10% M  
CHI: 36000 ppm

Mud Wt.: 8.7  
Visc: 55 Wt.: 8.0

Pipe strap 2.53 ft.  
short to board  
Survey: 10

DST No. 2

3140-3200 ft; 30.60.45.90

Hyd: 1540/1527  
IFP: 25/93 ISIP: 1147  
FFP: 86/141 FSP: 1128  
IF: Fair, BOB in 14 min  
IS: Blowback, built to 2"  
FF: Fair, BOB in 16 min  
FSI: Blowback, built to 1/4"

Rec. 310' fluid, 240' GIP  
140' free oil  
170' HOCM  
(30% oil, 70% mud)

Mud Wt.: 9.1

Mud Wt: 9.1  
Visc: 62 WL: 8.4  
DST No. 3  
3202-3260 ft., 20-60:30-90  
Hyd: 1553/1544  
IFP: 84/296 ISIP: 1137  
FFP: 290/478 FSIP: 1113  
IF: Strong, 808 in 1 min  
ISI: Blowback 808 in 30 min  
FF: Strong, 808 in 2 min  
FSI: Blowback, built to 1"  
Recovery: 1350' fluid, 570'  
570' GP  
1300' free oil  
50' MCO (60%  
40%N)

Mud Wt: 9.1  
Visc: 40 WL: 8.0

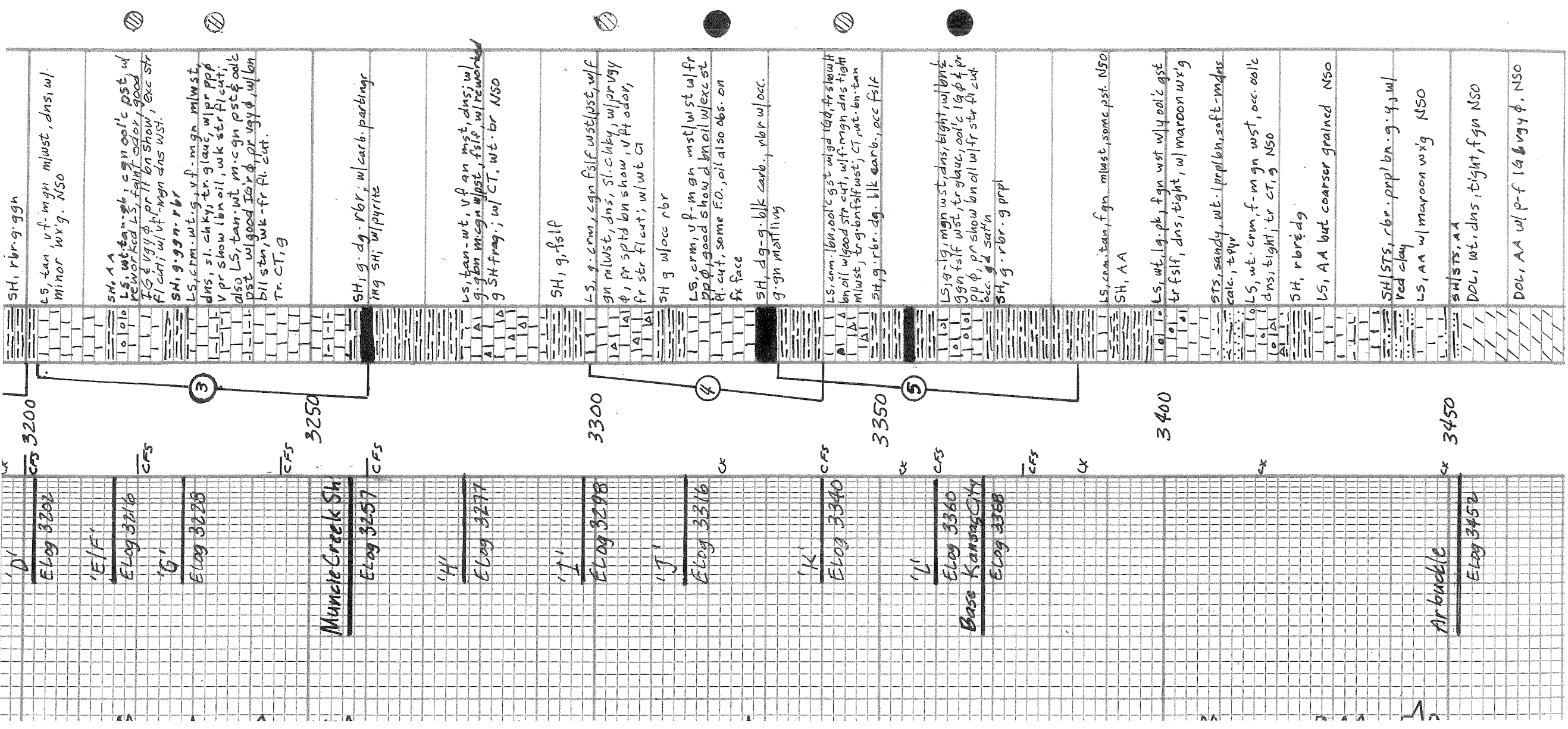
DST No. 4  
3299-3340 ft., 30-60:45-90  
Hyd: 1629/1615  
IFP: 18138 ISIP: 1207  
FFP: 33149 FSIP: 1208  
IF: Weak, built to 3 1/4"  
ISI: Dead  
FF: Weak, built to 3 1/4"  
FSI: Dead  
Recovery: 70' fluid  
60' free oil  
10' OCM  
(30% O, 70%N)

DST No. 5  
3332-3375, 30-60:30-60  
Hyd: 1636/1622  
IFP: 23/34 ISIP: 1016  
FFP: 31/40 FSIP: 967  
IF: Weak intermittent surf. bl.  
ISI: Dead  
FF: Dead  
FSI: Dead  
Recovery: 15' VSOCM  
1% oil  
99% Mud

3340:  
Mud Wt: 9.2  
Visc: 49 WL: 7.2  
3388:  
Mud Wt: 9.2 Visc: 48

Mud Wt: 9.2  
Visc: 47

"Arbuckle hop" @ 3457 ft.



Arbuckle

ELDG 3452

cx 3450

CFS,  
CX

3500

RTD 3509  
LTD 3507

DM 1212, cor. pp. on g. 4 w/

red clay

LS, AA w/ maroon w/xg NSO

SM/STS, AA

DOL, wt, dms, tight, fgn NSO

DOL, AA w/ p-f lg & vgy φ. NSO

DOL, AA, tr glauc, w/ g & pink NSO

DOL, AA, wt & tan NSO

DOL, AA w/ vpr vgy φ NSO

"Arbuckle hop" @ 3457A.