

# MIKE ENGELBRECHT

Licensed Geologist No. 334

2513 Spring Meadow  
Wichita, KS 67205

Phone: 316-721-9226  
Cell: 316-641-6008

## GEOLOGIST'S REPORT DRILLING TIME AND SAMPLE LOG

OPERATOR BITZLIE EXPLORATION, INC.

LEASE # 1 WRAY 15A

FIELD WILDCAT

LOCATION S/2 NW NE  $\approx$  960' ENL  $\&$  1830 FEL

SEC. 15 TWP. 13 RGE 34W

COUNTY LOGAN STATE KS

CONTRACTOR W/W DRIG RIG #2

COMPL. 10-12-13 COMP. 10-23-13

RTD 4120' LOG TD 4123'

SAMPLES SAVED FROM 3550 TO RTD

DRILLING TIME KEPT FROM 3400' TO RTD

SAMPLES OBTAINED FROM 3550 TO RTD

GEOLOGICAL SUPERVISION FROM 3580 TO RTD

MUD UP DISPL.  $\approx$  3390' TYPE MUD CHEMICAL

API # 15-109-21, 267-00 00

FORMATION	TOP	LOG	DATE	SAMPLE	STRUCT.
				DEPTH	CONDS.
ANHYDRITE	2413+575			2413+575	-1
BASE	2436+552			2436+552	-4
STILLER	3486-498			3486-498	+2
HEBNER	3841-853			3840-852	+1
LAUSING	3861-873			3888-900	+1
MUNKIE SH	4050-1062			4050-1062	-8
STARK SH	4141-1153			4140-1152	-9
BKC	4227-1239			4228-1240	-9
ALTAHONT	4272-1284			4272-1284	-7
PAWNE	4338-1350			4338-1350	-1
ST SCOTT	4399-1411			4397-1409	-13
CHEKORKE SH	4426-1438			4425-1437	-13
JOHANSON ZN	4472-1484			4472-1484	-12
MISS	4592-1604			4590-1602	-58

### ELEVATION

KB 2988

DF

GL 2983

Measurements Are All From KB 2988

### CASING RECORD

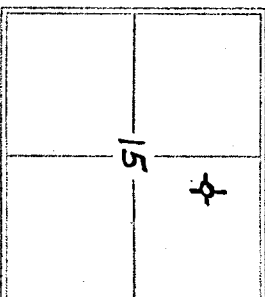
SURFACE 8 5/8"  $\approx$  221'

w/165 sxs.

PRODUCTION

### WELL LOG SURVEYS

COMP DENUS. NEXT  $\phi$   
DUAL INDUCTION



REFERENCE WELL FOR STRUCTURAL COMPARISON

CARMEN SCHMITT, INC. #1 Riley PPA  
330' ENL  $\&$  330' ENL 14-13-34W

10/21/13 @ 7:00 AM

EST & SURVEY RECORD

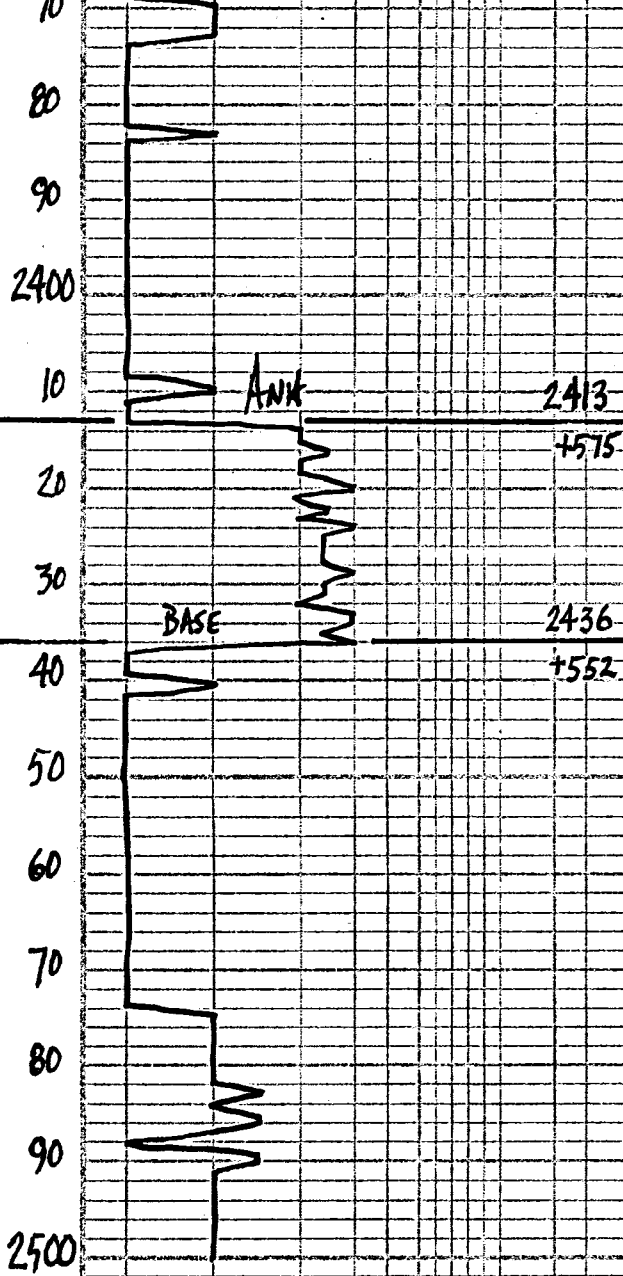
DATE	DEPTH	NO	SIZE	WGT	TYPE	DEPTH CUT
10-12-13	MUD / SPUD					
10-13	DRIG $\approx$ 445'					
10-14	DRIG $\approx$ 2270'					
10-15	DRIG $\approx$ 3245'					
10-16	DRIG $\approx$ 3820'					
10-17	QES $\approx$ 3955'					
10-18	DST #3 $\approx$ 3996'					
10-19	DST #5 $\approx$ 4105'					
10-20	DST #6 $\approx$ 4170'					
10-21	DRIG $\approx$ 4428'					
10-22	GOOD TIME AFTER DST 7					
10-23	LOGGING					

FORMATION

REMARKS

DESCRIPTION OF SURVEY





3400

10

20

30

40

DISPLACED @ 3390'

40  
50  
60  
70  
80

STOTLER

3486

-498

3500

10

20

30

40

50

60

70

80

90

3600

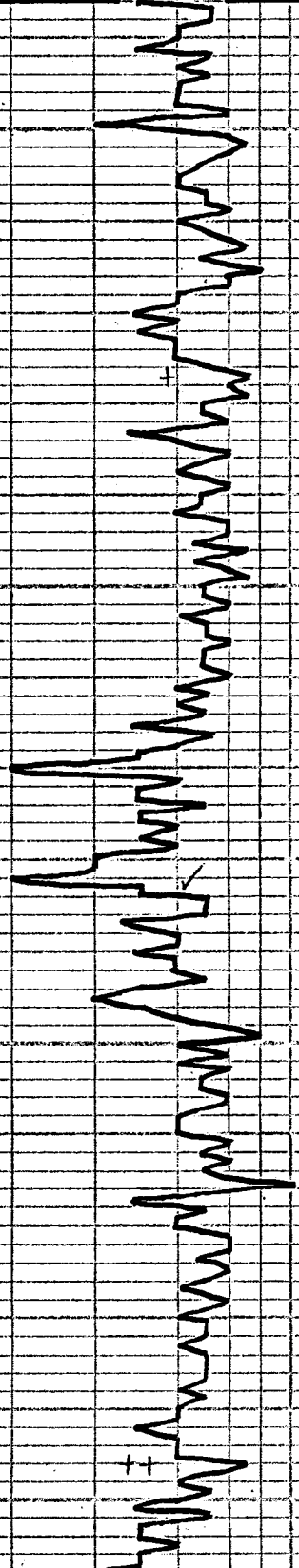
10

20

30

40

50



60 LT CRM-TAN BUFF SLI-FOSS LS  
POOR  $\phi$  - NS

BUFF LT CRM SLI-FOSS LS - NS

SR LS AA - NS, NO ODDR

LT CRM-BUFF SLI-FOSS LS - NS

00 CRK WK LS  $\frac{1}{4}$  LT GRAY SHS

10 WK-LT CRM CRK LS POOR  $\phi$  - NS

20 LT CRM-WK CRK LS - NS NO ODDR

LT CRM SEMI-FOSS LS - P-F  $\phi$  NS  
INC GRAY SHS

40 LOTS RED RUST SHS  $\frac{1}{4}$  GRAY

LT CRM-BUFF SLI-FOSS LS POOR  $\phi$   
NS NO ODDR

60 LT CRM SEMI-FOSS LS P-F  $\phi$  - NS

WK-LT CRM SLI-FOSS LS PLY CRK  
P-F  $\phi$  - NS NO ODDR

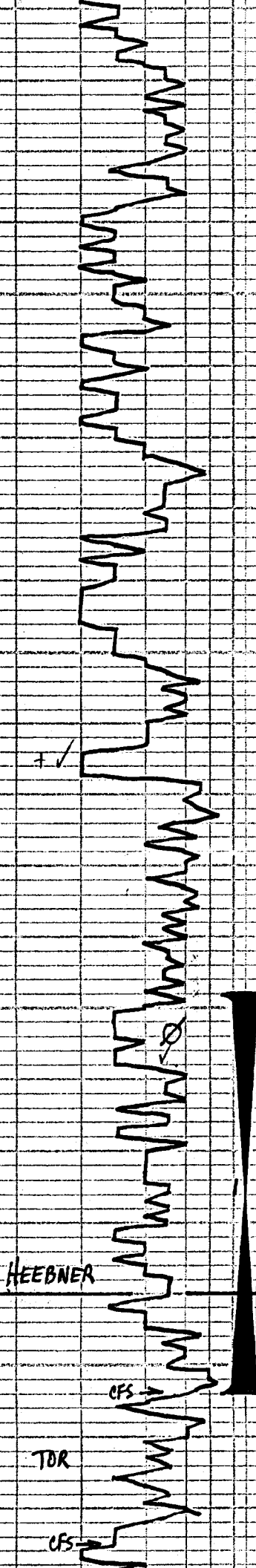
VISC: 64  
WT: 8.7  
LEN: 1 1/2"

750# PP

← GEOL ON LOC. 9:30 AM  
TUES. 10-15-13

VISC: 65  
WT: 8.7

60  
70  
80  
90  
3700  
10  
20  
30  
40  
50  
60  
70  
80  
90  
3800  
10  
20  
30  
40  
50  
60  
70  
80



3840  
-852

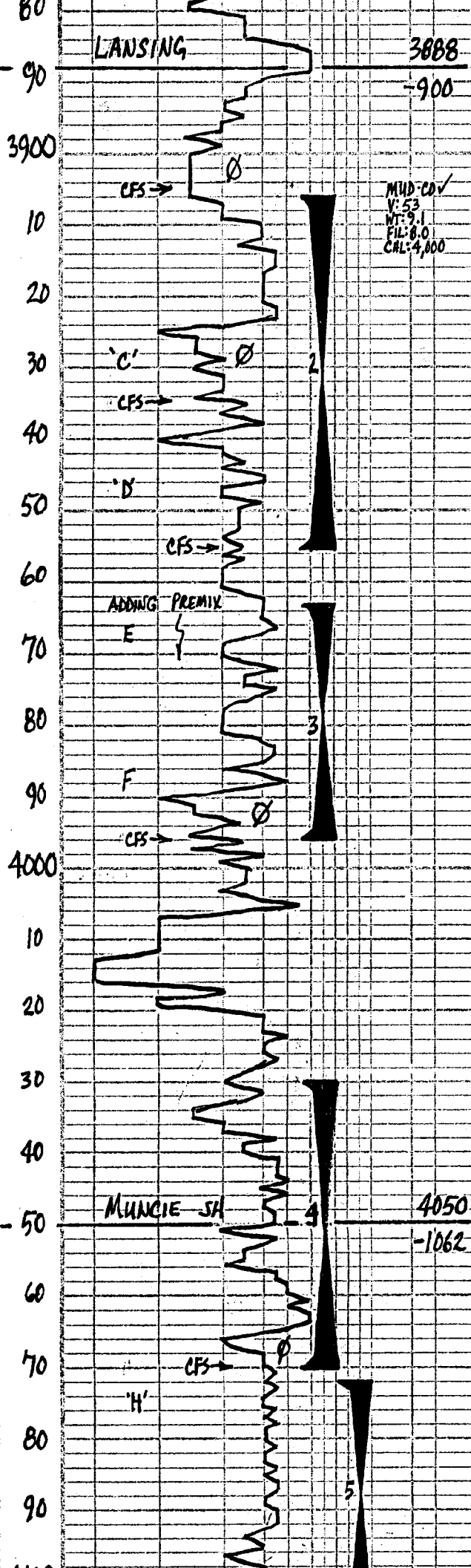
20 LT CRM SEMI-FOSS LS P-F φ NS  
 LT CRM - BUFF SEMI-FOSS LS P-F φ  
 NS NO OOR PTLY CKY  
 00 LS AA - NS NO OOR  
 LT CRM - LT BUFF SEMI-FOSS LS  
 P-F φ - NS  
 20 LT CRM - WH SLI-FOSS LS PTLY  
 CKY P-F φ - NS NO OOR  
 LT CRM - V-LT TAN FN-XCN CKY  
 LS POOR φ SOFT - NS  
 40 LT CRM - V-LT TAN V-FOSS LS FAIR φ  
 NS NO OOR  
 LT CRM SLI-FOSS LS P-F φ  
 NS NO OOR PTLY CKY  
 FEW BLK SHS  
 60 LT CRM - V-LT TAN SEMI-FOSS LS  
 P-F φ - NS NO OOR  
 WH-LT CRM SEMI-FOSS LS P-F φ  
 NS NO OOR  
 80 WH-LT CRM SLI-FOSS LS LOTS  
 CKY POOR φ - NS NO OOR  
 SOFT RES  
 PRED LT CRM - V-LT TAN SEMI-FOSS  
 LS P-F φ - NS  
 00 LOTS RED-RUST GUMBO SHS  
 LS AA - NS  
 10 FEW REG LT CRM FOSS LS W/FAIR  
 FOSS φ W/ DK STN, NO OOR  
 20 FEW PCS WH-CRM SEMI-FOSS LS  
 W/FAIR φ W/ DK STN, 2 PCS SSFO,  
 LT-NO OOR, FEW GAS BUB  
 30 FEW PCS LT CRM SEMI-FOSS LS  
 W/FAIR φ - FEW W/ DK STN  
 2 PCS SSFT & DK FO, FT OOR  
 40 LT CRM FOSS LS W/P-F FOSS φ  
 3 PCS W/SSFO, SLI GSH, FT OOR  
 50 LT CRM SLI-FOSS LS W/P-F φ  
 FEW PCS W/SSFO  
 5A) FEW PCS BLK SH  
 20 MIN LT CRM - LT TAN FN-XCN LS  
 POOR φ - NS NO OOR  
 45 MIN PRED WH-LT CRM LS - NS  
 FEW GRAY-GRN SHS  
 70 LT PEACH - FLESH GUMBO SH  
 WH FN-XCN LS MISC-CKY-NS  
 15) WH - V-LT TAN SLI-FOSS LS  
 POOR φ - NS NO OOR PTLY CKY  
 20 MIN WH - NOB FOSS LS POOR φ  
 NS NO OOR PTLY CKY  
 45 MIN WH SLI-FOSS NOB LS  
 P-F φ - NS NO OOR PTLY CKY  
 LOTS RUST RED GUMBO SHS STILL  
 80 PURE WH FN-XCN CKY LS - NS

← Visc: 60  
WT: 8.7

MUD: CO ✓  
 ← Visc: 65  
 WT: 8.7  
 FILT: 6.4  
 CHL: 3,000

PULLED 30 STD. SHORT TRIP  
 PIPE STRAP = 1.35 SHORT  
 S.H.T. = 1/2°

DST #1 3798-3854  
 30-45-30-45  
 IF: 1" BUILT TO BOB 5 1/4 MINS.  
 EF: 3/4" BUILT TO BOB 5 1/2 MINS.  
 NO BB.  
 REC: 134' HMCN + OS = 40' M 60' W  
 992' SLMCN = 5' M, 95' W  
 1126' T.F. CHL = 40K  
 SIP: 1104-1103  
 I.F.P: 19-307, F.F.P: 310-522  
 TEMP: 116°



30 WH-SEMI-FOSS OOL LS PTLY CKY NS  
 00 WH-V. LT TAN SLI-FOSS LS POOR OF NS NO OOR FEW GRN GRU SHS  
 05) WH-LT TAN EN-XLN LS PTLY CKY POOR OF NS NO OOR  
 20 MIN: LT CRM SUB OOL LS P-F P NS, NO OOR, PTLY CKY  
 10 WH-LT CRM SLI-FOSS LS DUSE-CKY SLI APT-NS NO OOR  
 20 WH-LT CRM LS AA-NS NO OOR  
 30 WH-FN-XLN CKY LS  
 35) FLOOD WH-LT CRM SUB OOL LS P-F P LOTS CKY NS NO OOR  
 20 MIN: PURE WH CKY LS P-F P NS NO OOR  
 45 MIN: WH-CRM SUB OOL LS P-F P NS, NO OOR LOTS CKY  
 40 WH CKY LS W/ SCAT SMALL FOSS W/ DR STN SFO NO OOR  
 50 INC PCS WH-LT CRM SEMI-OOL LS W/ FAIR OF W/ SFT & DR FO FT OOR  
 55) LOTS PCS WH-LT CRM SLI-FOSS LS W/ SCAT VUG OF W/ DR STN & SFTFO 20 MIN: WH-LT CRM SLI-FOSS LS W/ P-F P W/ DR STN FEW W/ SFTFO NO OOR PTLY CKY TRACE GAS  
 45 MIN: WH-CRM LS MA SFO, NO OOR TRACE GAS BUB  
 WH-CRM LS W/ POOR TAN VUG OF W/ SCAT STN-DR NO OOR  
 70 PRED WH-FN-XLN CKY LS POOR OF NS NO OOR  
 80 FEW PCS LT TAN V. FOSS LS W/ FAIR FOSS OF W/ SFTFO, LT OOR  
 90 LOTS LT CRM V. FOSS-OOL LS W/ FAIR FOSS OF W/ SFTFO, LT OOR 45 PCS W/ STN DR SFO CLEAN PCS  
 95) LOTS PCS WH-LT CRM FOSS LS W/ FAIR FOSS OF W/ S-FSBEF, LT OOR INC IN SLI CKY  
 30 MIN: WH-CRM-V. LT TAN SLI-FOSS LS W/ P-F FOSS OF W/ SFTFO, LT OOR SLI CKY  
 60 MIN: PRED LT TAN SEMI-FOSS LS W/ P-F FOSS OF FEW W/ SFTFO, LT OOR, INC IN CKY-S  
 10 LT CRM SLI-FOSS LS P-F P-NS  
 20 WH-LT CRM SLI-FOSS LS P-F P-NS NS NO OOR CKY-DUSE  
 30 FLOOD WH-LT CRM OOL LS FAIR OOL OF NS, NO OOR PTLY CKY  
 40 LT CRM-V. LT TAN OOL LS FAIR OOL OF NS, NO OOR PTLY CKY  
 50 LOTS DK GRN GRU SHS FEW BLK LT CRM SLI-FOSS LS W/ POOR OF NS NO OOR  
 60 LT CRM SLI-FOSS LS POOR OF FEW PCS SCAT LT STN, NO OOR  
 70) LOTS BLK SHS? CRM-LT TAN BUFF SLI-FOSS LS POOR OF NS NO OOR 30 MIN: FAIR TAN LT CRM SEMI-FOSS LS W/ P-F FOSS OF W/ SFTFO, SCAT LT STN, LT OOR SLI CKY  
 60 MIN: LT CRM SEMI-FOSS LS W/ FAIR OF 15 PCS W/ SFTFO LT-F OOR 1 FEW GAS BUB SLI CKY 1 MORE BLK SHS 30 PCS STN  
 90 LOTS GRN SHS 1 WH-LT CRM LS SLI-FOSS CKY, NS NO OOR  
 60 WH-LT CRM FN-XLN LS POOR OF NS LOTS GRN GRU SHS  
 05) LT GRN-LT TAN FN-XLN LS POOR OF NS NO OOR  
 30 MIN: FEW LT TAN SLI-FOSS LS W/ P-F P FEW LT STN SFO

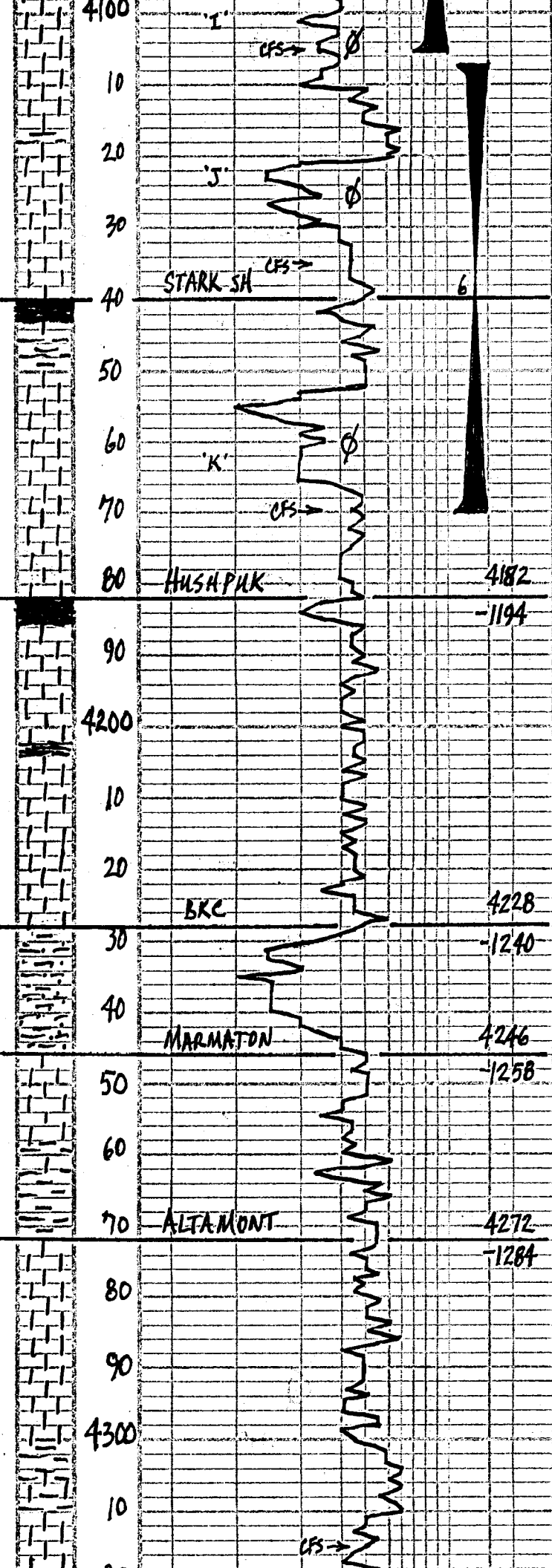
DST #2 3906-3955  
 30-45-45-60  
 IF: WK BUILT TO 5 1/2"  
 FF: WK BUILT TO 7" WSBB  
 REC: 77' HWCW=30' W, 70' M  
 120' HMCW=33' M, 67' W  
 197 TF, CHL=35K  
 SIP: 1135-1115  
 IFP: 8-70 FFP: 71-103  
 TEMP: 111°

DST #3 3963-3996  
 30-45-45-60  
 IF: WK, BUILT TO 3 1/4"  
 FF: WK, BUILT TO 3 1/4" NO BB  
 REC: 20' VSOW CM=2' D, 2' W, 96%  
 120' WCM=20' W, 89%  
 140 TF CHL=36K  
 SIP: 1189-1173  
 IFP: 8-42 FFP: 47-72  
 TEMP: 108

DST #4 4030-4070  
 30-45-45-60  
 IF: WK BUILT TO BOB 27 MIN  
 FF: WK, BUILT TO BOB 30 MIN  
 REC: 398' SLMCW=10' M, 90% W  
 CHL=36K  
 SIP: 1265-1263  
 IFP: 9-99 FFP: 101-185  
 TEMP: 111

DST #5 4072-4105  
 30-45-30-45  
 IF: WK, BUILT TO 1" 30 MIN  
 FF: WK SURE BLOW THRU OUT  
 REC: 2' MUD  
 SIP: 527-594  
 IFP: 6-9 FFP: 8-9  
 TEMP: 105





CR. MIN. FEW LT TAN LS W/FAIR TAN ODOR FOSS. W/FCG FO, LT-FAIR ODOR SLI CKY

20 FLOOD WH-FN-XLN CRN LS POOR LS POOR STN, NO ODOR CKY  
 30 LOTS GRN-GRN SHS & WH-CRM SLI FOSS LS POOR. 0. 4 PCS M. USSES, NO ODOR LOTS CKY SLI EFF  
 35 FLOOD LT GRN-CRM, SHB OOC LS LOTS CKY FAIR. 0. NS NO ODOR  
 30 MIN: FLOOD WH-FN-CRM VLT TAN SU B OOC LS W/FAIR OOC. 0. NS NO ODOR, LOTS CKY  
 60 MIN: CKY LS AA-NS FEW DR GRN SHS  
 40 PRED LT CRM-SLI-FOSS LS POOR. 0. NS NO ODOR CKY  
 50 LT CRM-LT TAN SMALL FOSSES FEW PCS W/POOR FOSS. 0. W/SLI FT ODOR ON BK  
 60 FEW BLK SHS PRED LT TAN SLI-FOSS LS W/POOR. 0. NS

DST#6 4107-4170  
 30-45-30-45  
 IF: FAIR TO BOB 2 1/2 MINS  
 FE: FAIR TO BOB 3 1/4 MINS  
 REC: 164' M&W=50% M, 50% W  
 1550' SLI M&W=15% M, 85% W  
 1714' IF... CHL=30 K  
 SIP: 1213-1213  
 IFP: 70-515 FFP: 537-791  
 TEMP: 121°

70 LT CRM-LT TAN SEMI-FOSS LS W/P-F FOSS. 0. FEW PCS WISSED 147 OODR ON BK LATE CRM  
 30 MIN: LT CRM-JOY SLI-FOSS LS FEW PCS LT SCAT STN, NO ODOR  
 60 MIN: CKY LT TAN SLI-FOSS LS FEW PCS LT STN FT ODOR ON BK PITY CKY-DNSE  
 80 LT CRM-TAN SLI-FOSS LS-NS BUNCH VARI-COLOR SHS  
 90 BK SHS & WH-CRM SLI-FOSS LS POOR. 0. CKY NS NO ODOR

MUD-COV  
 VISC: 59 FILT: 8.8  
 WT: 9.2 CHL: 6,000

00 LOTS BLK SHS! CRM-LT GRN-FN-XLN LS POOR. 0. NS-1 NO ODOR, TEN LT GRN-DR GRN A

ADDING: PRE-MIX

10 LT CRM-LT BUFF-FN-XLN LS POOR FEW PCS LT SCAT STN, NO FO, NO ODOR CKY-DNSE  
 20 PRED WH-LT CRM, LT TAN, FN-XLN LS DNSE-CKY POOR. 0. NS

30 CRM-LT TAN-BUFF-SLI-FOSS LS POOR. 0. NS, NO ODOR DNSE-CKY  
 40 LOTS LT GRN-GRN-BRN SHS LS AA-NS NO ODOR  
 50 LT LT PENCH-BUFF SH & SHY LS POOR. 0. NS NO ODOR

VISC: 56  
 WT: 9.1  
 LCM: 2#

60 FEW VLT GRN-FLESH V-FGR SHS SHY-NS & LT TAN-FN-XLN LS POOR. 0. NS NO ODOR

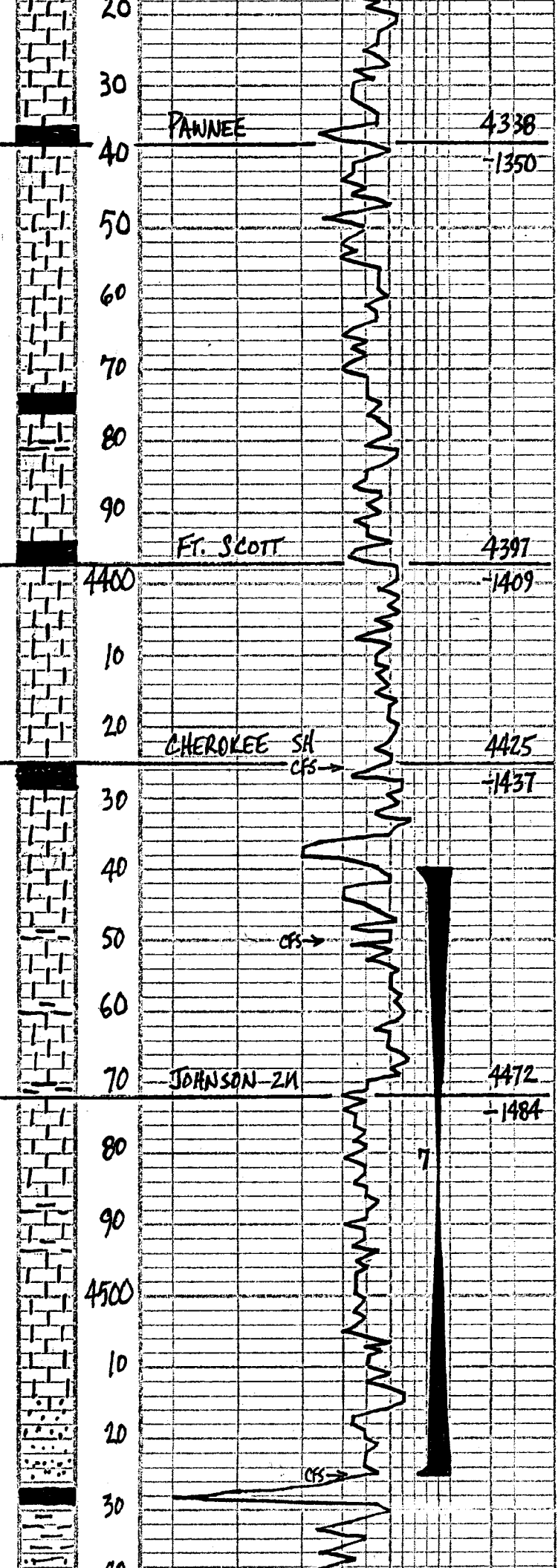
70 LT TAN SEMI-FOSS LS W/FAIR FOSS. 0. W/DR STN, PT ODOR ON BK

80 LOTS LT TAN-BUFF-FN-XLN LS POOR. 0. NS NO ODOR DNSE-CKY

90 LT TAN-BUFF-FN-XLN LS POOR. 0. NS NO ODOR LOTS BRN GRN SHS

00 LT CRM-LT BUFF-SLI-FOSS LS 1 PC W/POOR VUG. 0. W/LT BRN STN NO ODOR

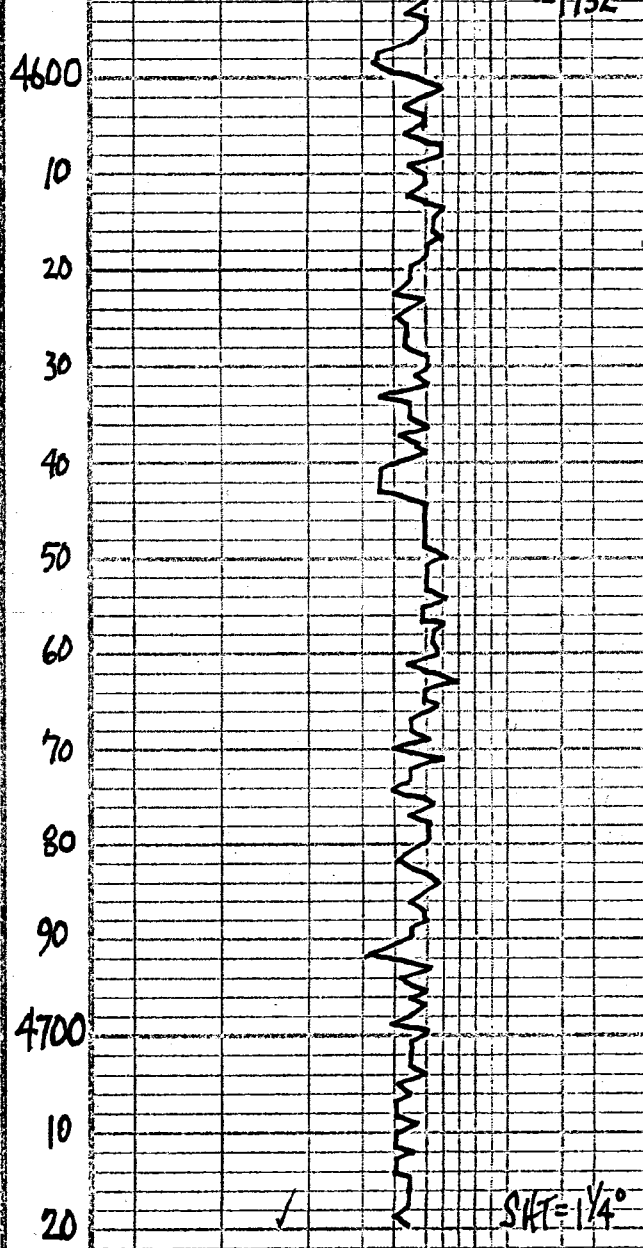
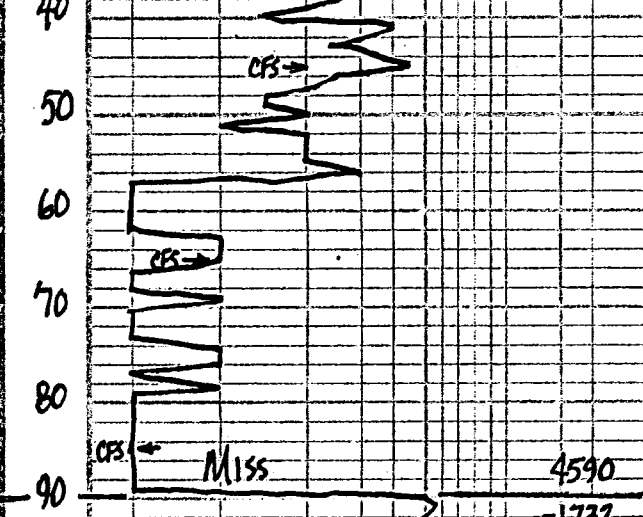
10 FLOOD WH-LT CRM SLI-FOSS LS POOR. 0. NS NO ODOR DNSE-CKY  
 15 LT CRM-BUFF-FN-XLN LS POOR. 0. NS NO ODOR LOTS BRN RUST SHS  
 30 MIN: FLOOD WH-V-LT GRN-FN-XLN LS POOR. 0. NS NO ODOR  
 60 MIN: LT CRM-V-LT GRN-FN-XLN LS POOR. 0. NS DNSE-CKY  
 10



LT CRM - V. LG GRN - BUFF FN - XLN LS  
 POOR  $\phi$  - NS NO ODOR  
 LT CRM - LT TAN FN - XLN LS  
 POOR  $\phi$  - NS NO ODOR  
 NO LT CRM - LT TAN FN - XLN LS POOR  $\phi$   
 NS NO ODOR  
 50 LOTS BLK SHS CRM - TAN LS - NS  
 DNSE - CRV POOR  $\phi$  NO ODOR  
 60 FLOOD LT TAN - BUFF FN - XLN LS  
 POOR  $\phi$  - NS NO ODOR FEW &  
 LT GRN  
 70 LT CRM - LT TAN FN - XLN LS POOR  $\phi$   
 NS NO ODOR  
 80 LOTS BLK SHS LT TAN - BUFF  
 FN - XLN LS POOR  $\phi$  - NS NO ODOR  
 90 LT CRM - LT TAN CRV LS POOR  $\phi$   
 NS NO ODOR LOTS SHS  
 00 LT TAN FN - XLN LS DNSE LOTS GRN  
 SEMI - OPAQUE A POOR  $\phi$  - NS  
 (PC CRM LS W/ POOR  $\phi$  - STN, NO ODOR)  
 10 BLK - GRN SHS CRM - LT TAN  
 FN - XLN LS POOR  $\phi$  - NS NO ODOR  
 20 LT TAN - WHF FN - XLN LS POOR  $\phi$   
 DNSE - CRV NS, NO ODOR  
 26 FLOOD LT TAN - BUFF FN - XLN LS  
 POOR  $\phi$  - NS NO ODOR  
 30 MIN. LS AA - NS NO ODOR  
 60 MIN. LT CRM - TAN BUFF FN - XLN  
 LS POOR  $\phi$  - NS NO ODOR LOTS BLK SH  
 40 BLK SHS & PRED LT TAN - BUFF FN -  
 XLN LS POOR  $\phi$  - NS NO ODOR  
 50 LT CRM - LT TAN FN - XLN LS POOR  $\phi$   
 NS NO ODOR  
 30 MIN. LT TAN - BUFF SLI - FOSS LS  
 POOR  $\phi$  - NS NO ODOR  
 60 MIN. (PCS TAN CRV LS W/ POOR  
 INTER. CO.  $\phi$  W/ STN, NO ODOR)  
 60 LOTS BLK - GRN SHS LT TAN SLI - FOSS  
 CRV LS POOR  $\phi$  - NS NO ODOR  
 70 LOTS SHS GRN GRN BRN BLK LT TAN  
 FN - XLN LS POOR  $\phi$  - NS NO ODOR  
 80 LOTS LT GRN - GRN SHS FEW LT TAN  
 FN - XLN LS - NS NO ODOR  
 90 FEW LT CRM - LT TAN SLI - FOSS LS  
 W/ POOR  $\phi$  SCAT LT STN, TRACE FO  
 NO ODOR  
 00 FEW LT TAN - BUFF SLI - FOSS LS  
 POOR  $\phi$  FEW LT SCAT STN VSSFO  
 NO ODOR  
 10 LT BUFF FN - XLN SLI - CRV LS POOR  $\phi$   
 SCAT LT STN, NO ODOR  
 20 PRED LT TAN FN - XLN LS POOR  $\phi$  FEW  
 PCS W/ SCAT LT STN  
 25 LT CRM - BUFF FN - XLN CRV LS  
 POOR  $\phi$  - NS NO ODOR FEW CL. F. FN CR  
 SST. CRV MATRIX - SOFT - NS NO STN  
 30 MIN. LS AA - NS INC. WH. CL. FN -  
 GR SST. SUB. RD. ANG POOR  $\phi$  - NS  
 60 MIN. FLOOD LT TAN FN - XLN LS  
 POOR  $\phi$  - NS NO ODOR  
 45 LOTS LT GRN SHS FEW LT GRN V. FN - GR  
 SILTY - POOR  $\phi$  DIRTY - NS NO ODOR  
 LESS GOLD & BLK SHS  
 30 MIN. LOTS GRN SHS V. FEW LGE SD GO

DST #7 4440-4525  
 30-45-45-60  
 IF: 1" BUILT TO BOB IN 10 1/2 MINS.  
 FF: 3/4" BUILT TO BOB IN 12 MINS.  
 REC: 248' HMCN = 25% W, 75% M  
 372' HMCN = 45% W, 55% M  
 244' HMCN = 33% W, 67% M  
 864' TOTAL FLUID 32K  
 SIP: 1160-1155  
 IFP: 17-211 FFP: 218-415  
 TEMP: 124°





RTD = 4720'  
LTD = 4723'

- 60 MIN: PRED GRN GOLD PHAP BLX SHS  
V. FEW FN-GR SST - DIRTY - NS NO ODR
- 60 LT GRN SILTY-SM SHS FEW LT GRN-CL  
V. FN GR SST - NS V. FEW LGE SD GRANS
- 30 MIN: PRED LT GRN SHS, FEW WH  
FN-GR SST CHALK MATRIX - NS
- 60 MIN: FAIR MAT WH - V. LT TAN SST  
FN-GR FAIR SORT, SEMI - FAIR CHL MATR  
FAIR  $\phi$  - NS, NO ODR
- 80 SST  $\phi$  SHS AA - NS, NO ODR
- 85) WH-LT GRN FN-GR SST - CHL - SILT -  
NS, NO ODR INC PYRITE GRN SHS  
30 MIN: LOTS WH FN-GR SST - CHL  
NS, NO ODR V. FEW LOOSE SD GRN  
60 MIN: SST AA - NS F. LT TAN - BUFF  
FN-XLN LS - NS NO ODR
- 90  
LOTS GRN-GRN SHS  $\phi$  LESS WH CRYSST  
NS, NO ODR
- 85) FLOOD DULL WH FN-XLN CHL LS POOR  
 $\phi$  DNSE - CHL NS NO ODR  
30 MIN: WH - LT CRM FN-XLN CR-SM  
LS POOR  $\phi$  - NS NO ODR  
60 MIN: FLOOD WH - LT CRM MICRO-DOL  
CHL LS POOR  $\phi$  - NS NO ODR  
10 WH - LT CRM MICRO-DOL LS POOR  $\phi$   
NS, NO ODR  
20 PURE WH CHL LS FN-XLN  
POOR  $\phi$  - NS
- 30 WH - LT CRM MICRO-DOL CHL LS  
P-F  $\phi$  - NS NO ODR
- 45 WH - LT CRM DOL - DC LS CHL ← Visc: 55  
POOR  $\phi$  - NS NO ODR WT: 9.2
- 50 V. LT TAN DNSE MICRO-XLN LS - NS
- 60 PRED V. LT CRM - TAN FN-XLN LS  
POOR  $\phi$  - NS NO ODR CHL
- 70 LT CRM - TAN FN-XLN LS - NS ← Visc: 54  
WT: 9.1
- 80 LT TAN FN-XLN DNSE LS POOR  $\phi$   
NS NO ODR
- 90 LT CRM - LT TAN LS - NS  
INC GRN SHS
- 80 LT TAN FN-XLN LS PTLY CHL  
POOR  $\phi$  - NS NO ODR
- 70 CRM - LT TAN LS POOR  $\phi$  - NS
- 25 LT CRM - LT TAN FN-XLN LS  
POOR  $\phi$  - NS NO ODR  
PTLY CHL

SHT = 1 1/4°

