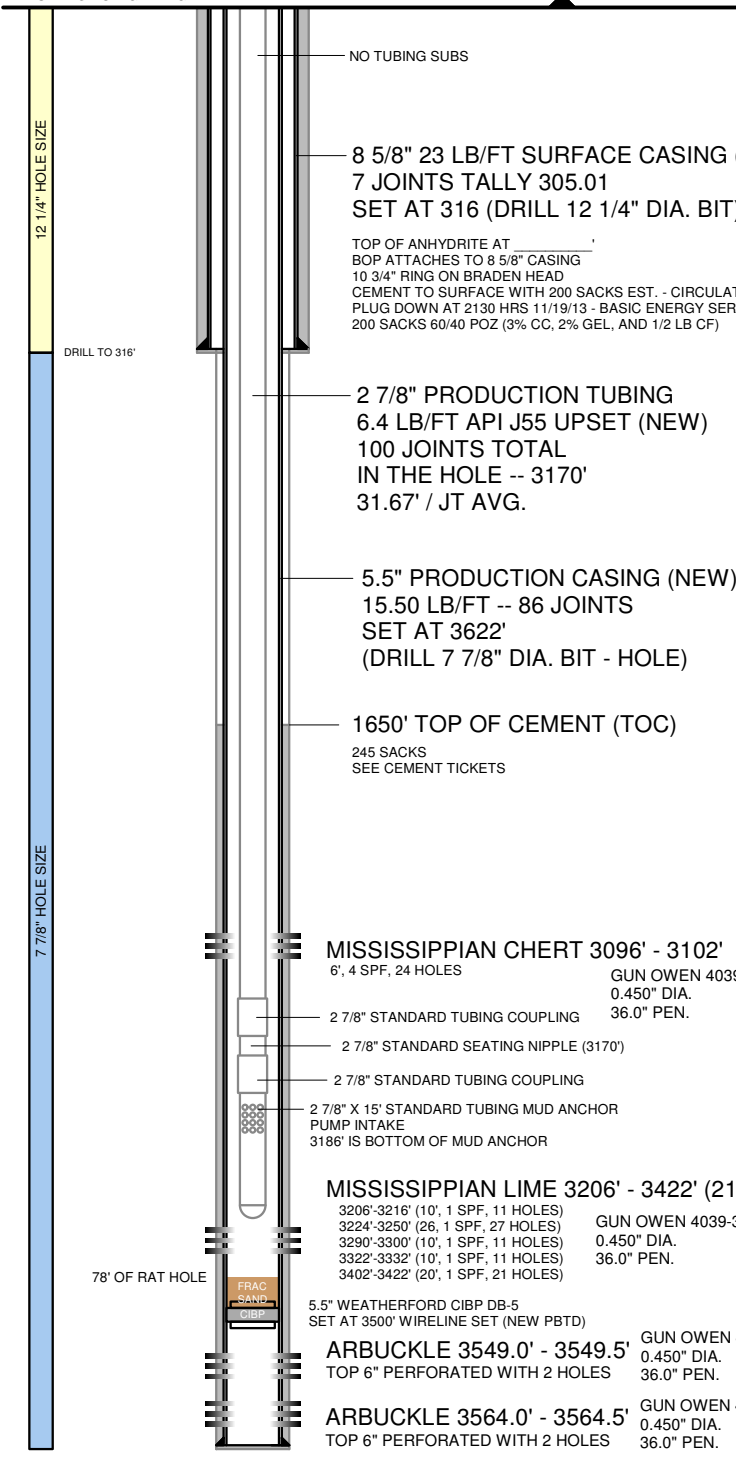


SURFACE TEMP: 70 DEG F MAX

K.B.: 8'

G.L. ELEVATION 1215' (SHL)

5 1/2" X 2 7/8" TUBING HEAD  
SET TOP CLPG 12" AGL



NOTES:

PUMPING UNIT: C - 160 -190 - 74 (74" SURFACE STROKE)  
 CONVENTIONAL PARKERSBURG UNIT  
 30 HP ELECTRIC MOTOR WITH 50 HP SPOCC VFD  
 VFD INSTALLED  
 RUN TIME: 24 HRS PER DAY  
 1.25" X 16' POLISHED ROD WITH LINER ASSEMBLY (16')  
 2' PONY ROD ON TOP (7/8" GRADE D) (2')  
 1.50" X 8' HARD LINED POLISHED ROD LINER WITH SEAL (8')  
 38 - 7/8" GRADE D SUCKER RODS ON TOP (1350')  
 83 - 3/4" GRADE D SUCKER RODS ON BOTTOM (2075')  
 2 - 1.50" X 25' SINKER BAR ON TOP OF PUMP (50')  
 ONE 2' X 7/8" GRADE D PONY ROD ON BOTTOM (TOP OF PUMP) (2')  
 SPEED RANGE: 4 (7.7) TO 14.4 SPM  
 MAX. SPEED: 14.4 SPM  
 MAX. DISPLACEMENT: 475 BPD (2.00" BORE PUMP)  
 MAX. DISPLACEMENT: 900 BPD (2.75" BORE PUMP W/TUBING ANCHOR)

TUBULARS

PURPOSE SIZE	CONDUCTOR 13 3/8"	SURFACE 8 5/8"	INTERMEDIATE	PRODUCTION 5 1/2"	PROD. TUBING 2 7/8"
WEIGHT	NONE	2,946 PSIG	NONE	15.5 LB/FT	6.40 LB/FT
GRADE	NONE	J-55	NONE	J-55	J-55
BURST	NONE	24.0 LB/FT	NONE	4,812 PSIG	7,265 PSIG
COLLAPSE	NONE	381,395 LBF	NONE	4,043 PSIG	7,676 PSIG
YIELD	NONE	1,434 PSIG	NONE	248,274 LBF	99,661 LBF
CAPACITY	NONE	0.064 BBL/FT	NONE	0.024 BBL/FT	0.006 BBL/FT
THICKNESS	NONE	0.2640"	NONE	0.2750"	0.2170"
ID	NONE	8.0970"	NONE	4.9500"	2.4410"
DRIFT ID	NONE	7.9720"	NONE	4.8250"	2.3470"
AREA	NONE	51.49 IN2	NONE	19.42 IN2	4.68 IN2
SETTING DEPTH	NONE	305'	NONE	3,622'	3547' TO PUMP
LENGTH	NONE	305'	NONE	3,622'	NEED 3591'
FOB	NONE	CHASE, KS	NONE	CHASE, KS	CHASE, KS
COST	NONE	\$ / FT	NONE	\$ / FT	\$ / FT

DATE	09/20/2013
APPROVED BY	B. KELSO
AFE	TBD
API No.	15035245380000
GL ELEVATION	1215'
KB	8'
KB ELEVATION	1223'
RIG	FOSSIL #2

10 TO 30 BWPD & TRACE OF OIL NOT ACIDIZED YET

UNKNOWN AFTER FRAC AFTER FRAC WELLBORE FULL OF OIL

420+ BWPD & 2 BOPD GROSS

200 BWPD & TRACE OF OIL

DOWN HOLE SUCKER ROD PUMP:

2.00" INSERT PUMP  
 PUMP LENGTH: 16' (NICARD AND SS)  
 BOTTOM HOLD DOWN TYPE  
 TRAVELING BARREL  
 2' X 7/8" PONY ROD ON TOP OF PUMP  
 8' GAS SEPARATOR ON THE BOTTOM  
 PUMP INTAKE DEPTH: 3178'  
 GAS IS VENTING AT WELL HEAD (TUBING/CASING)  
 PUMP SETTING ABOVE PERFS FRACED FOR NEXT 60 DAYS FOR SAND PROTECTION

PBTD: 3591' MD TVD  
 RTD: 3633' MD TVD.  
 LTD: 3626' MD TVD  
 DOWNHOLE TEMP: 125 DEG F

**BOGNER A #1**  
 COWLEY COUNTY, KANSAS  
 22-T33S-R05E  
 SHL: 1825 FSL, 3145 FEL  
 VERTICAL WELLBORE  
 ALBRIGHT FIELD

