



# Joshua R. Austin

## Petroleum Geologist

report for

### RAMA Operating CO., Inc



COMPANY: RAMA Operating Company, Inc.

LEASE: Licholat #1-27

FIELD: North Star

LOCATION: SW-NE-SE-SE (700' FSL & 350' FEL)

SEC: 27 TWSP: 24s RGE: 12w

COUNTY: Stafford STATE: Kansas

KB: 1880' GL: 1867'

API # 15-185-23857-00-00

CONTRACTOR: Sterling Drilling (rig #5)

Spud: 01/25/2014 Comp: 01/31/2014

RTD: 4180 LTD: 4184

Mud Up: 2900' Type Mud: Chemical was displaced

Samples Saved From: 2800' to RTD  
 Drilling Time Kept From: 2800' to RTD  
 Samples Examined From: 2800' to RTD  
 Geological Supervision From: 3200' to RTD  
 Geologist on Well: Josh Austin

Surface Casing: 8 5/8" @356'  
 Production Casing: None

Electronic Surveys: By Pioneer Energy Services

#### NOTES

On the basis of the poor structural position, lack of shows and after evaluating the electric logs, it was recommended by all parties involved to plug and abandon the Licholat #1-27 at the rotary total depth 4180'.

## RAMA Operating Co., Inc.

### well comparison sheet

DRILLING WELL

COMPARISON WELL

COMPARISON WELL

Licholat 1-27					Dale #1				Budde #3				
1880 KB					1872 KB				1882 KB				
					Structural Relationship				Structural Relationship				
Formation	Sample	Sub-Sea	Log	Sub-Sea	Log	Sub-Sea	Sample	Log	Log	Sub-Sea	Sample	Log	
Heebner	3344	-1464	3348	-1468						3338	-1456	-8	-12
Toronto	3355	-1475	3364	-1484									
Douglas	3378	-1498	3388	-1508						3390	-1508	10	0
Brown Lime	3500	-1620	3502	-1622						3501	-1619	-1	-3
Lansing	3528	-1648	3524	-1644	3520	-1648	0	4		3521	-1639	-9	-5
Viola	3942	-2062	3942	-2062	3950	-2078	16	16		3934	-2052	-10	-10
Simpson Shale	4060	-2180	4061	-2181	4061	-2189	9	8		4058	-2176	-4	-5
Arbuckle	4125	-2245	4123	-2243	4124	-2252	7	9					
Total Depth	4180	-2300	4184	-2304	4151	-2279				4082	-2200		



**TRILOBITE TESTING, INC.**

## DRILL STEM TEST REPORT

Rama Oper. Co. Inc.

27-24s-12w Stafford co.

101 S. Main St.  
Stafford, Ks. 67578

Licholat #1-27

Job Ticket: 51929

DST#: 1

ATTN: Josh Austin

Test Start: 2014.01.30 @ 00:18:51

### GENERAL INFORMATION:

Formation: **Lansing "L"**

Deviated: No Whipstock: 0.00 ft (KB)

Time Tool Opened: 02:30:21

Time Test Ended: 06:51:06

Test Type: Conventional Bottom Hole (Initial)

Tester: Gary Pevoteaux

Unit No: 53

Interval: 3750.00 ft (KB) To 3780.00 ft (KB) (TVD)

Total Depth: 3780.00 ft (KB) (TVD)

Hole Diameter: 7.88 inches Hole Condition: Fair

Reference Elevations: 1880.00 ft (KB)

1867.00 ft (CF)

KB to GR/CF: 13.00 ft

Serial #: 6719

Outside

Press@RunDepth: 56.45 psig @ 3751.00 ft (KB)

Capacity: 8000.00 psig

Start Date: 2014.01.30

End Date:

2014.01.30

Last Calib.:

2014.01.30

Start Time: 00:18:56

End Time:

06:51:05

Time On Btm:

2014.01.30 @ 02:28:21

Time Off Btm:

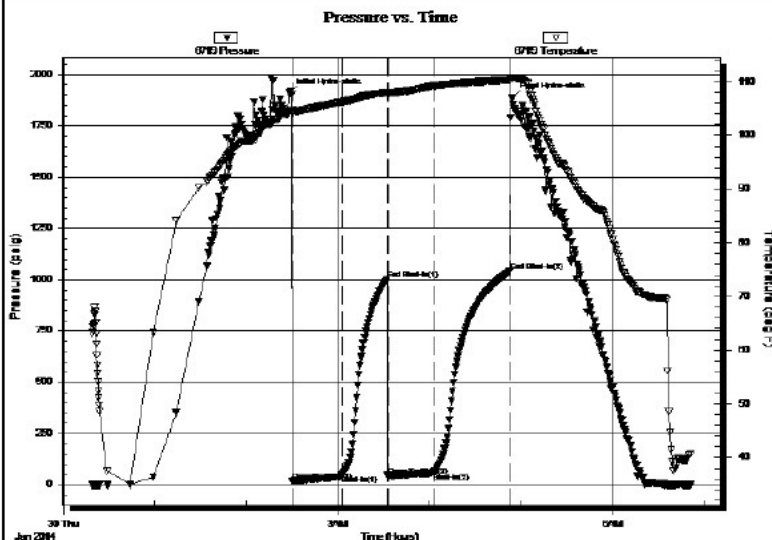
2014.01.30 @ 04:54:51

TEST COMMENT: IF: Weak blow . Surf. - 3 in.

IS: No blow .

FF: Weak blow . Surf. - 2 in.

FSI: No blow .



### PRESSURE SUMMARY

Time (Min.)	Pressure (psig)	Temp (deg F)	Annotation
0	1908.43	104.31	Initial Hydro-static
2	15.14	103.88	Open To Flow (1)
35	45.55	106.19	Shut-In(1)
65	1000.49	107.99	End Shut-In(1)
65	41.81	107.80	Open To Flow (2)
95	56.45	109.18	Shut-In(2)
145	1039.76	110.34	End Shut-In(2)
147	1883.90	110.74	Final Hydro-static

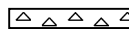
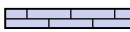






### Recovery

Length (ft)	Description	Volume (bbl)
70.00	SOCM 2%o 98%g	0.34
0.00	Trace of GIP	0.00

### Gas Rates

	Choke (inches)	Pressure (psig)	Gas Rate (Mcf/d)

### ROCK TYPES

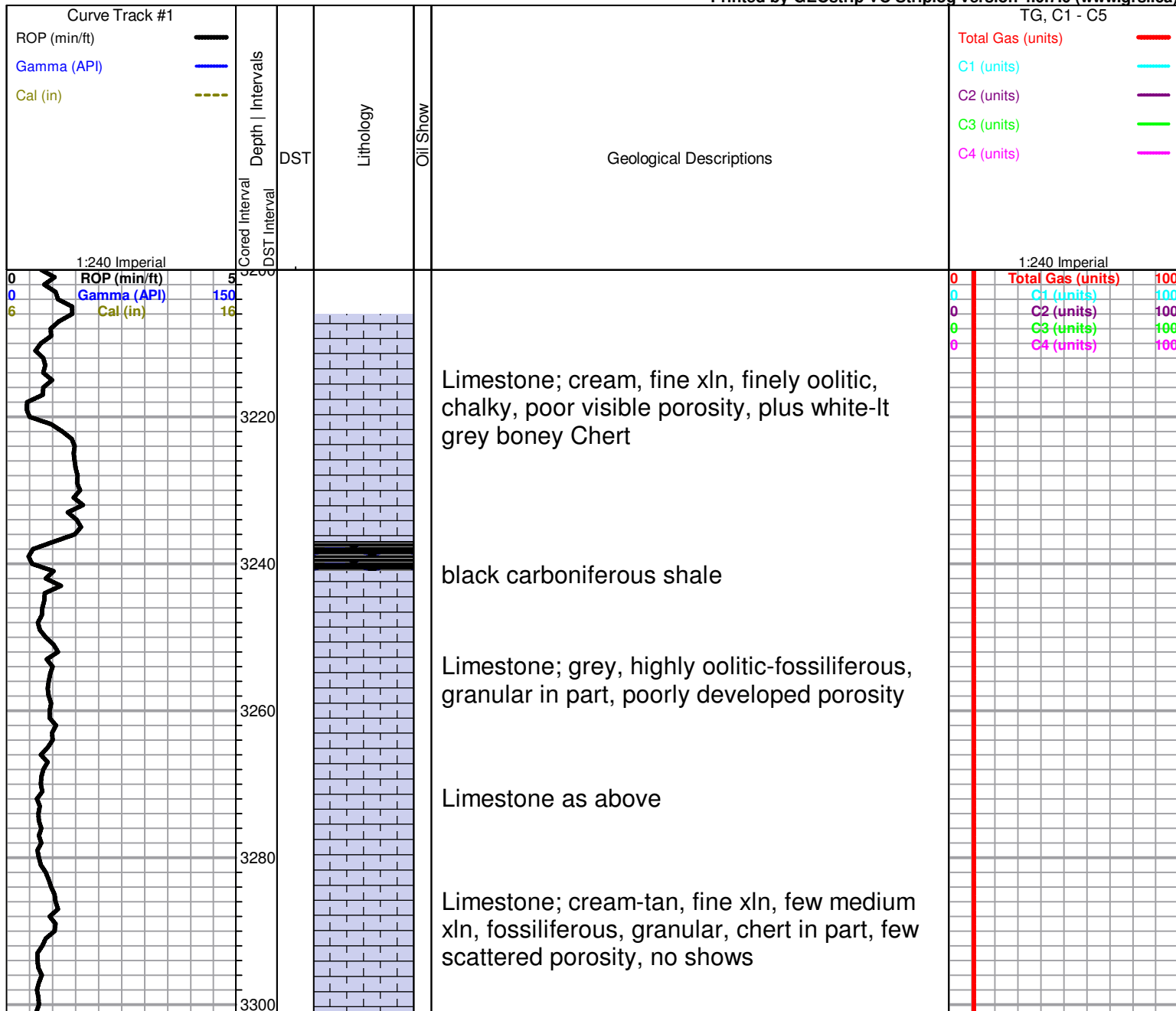
 Cht	 Lmst fw7>	 shale, gry	 shale, red
 Dolsec	 shale, grn	 Carbon Sh	 Ss

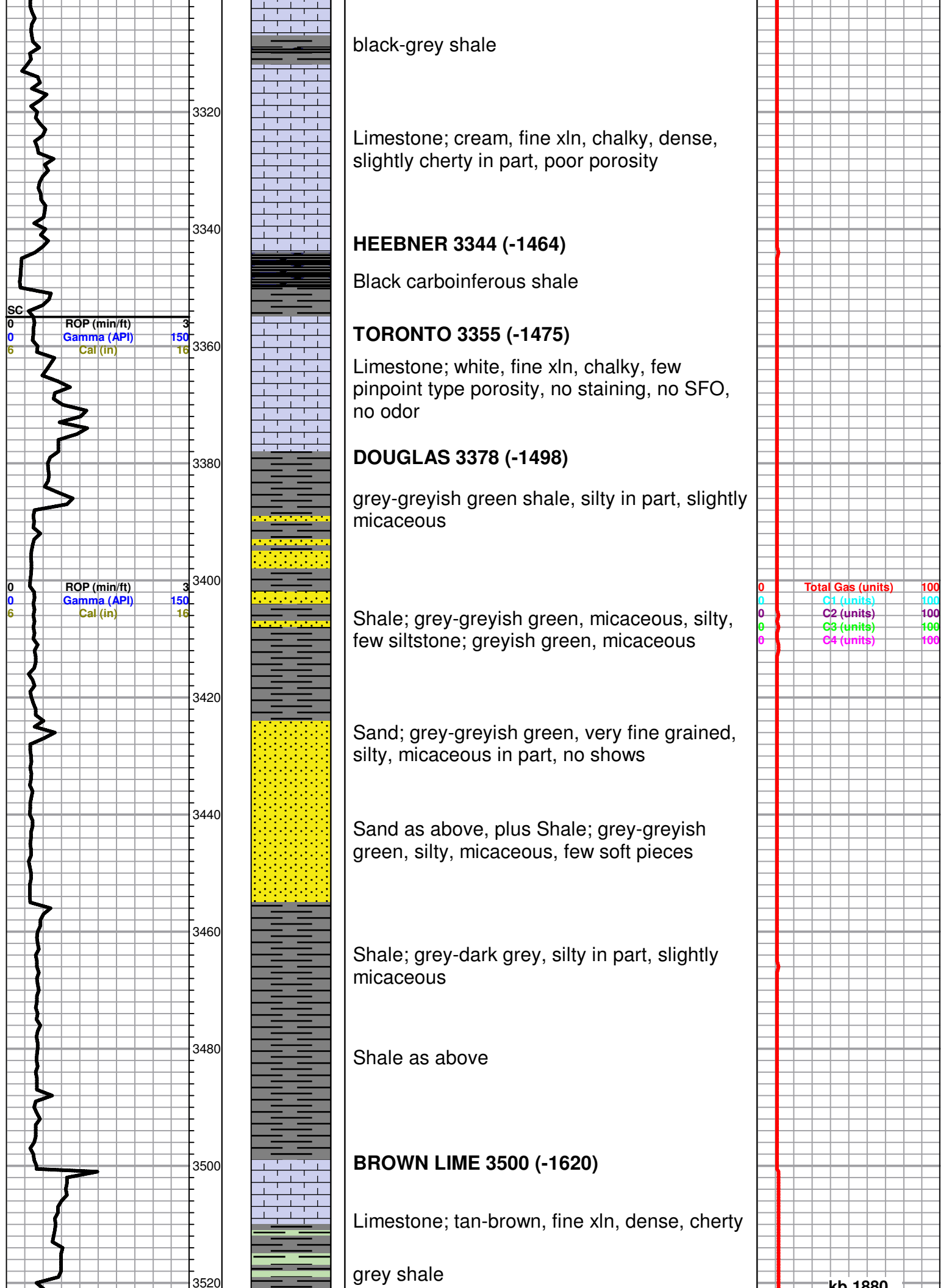
### OTHER SYMBOLS

**DST**

	DST Int
	DST alt
	Core
	tail pipe

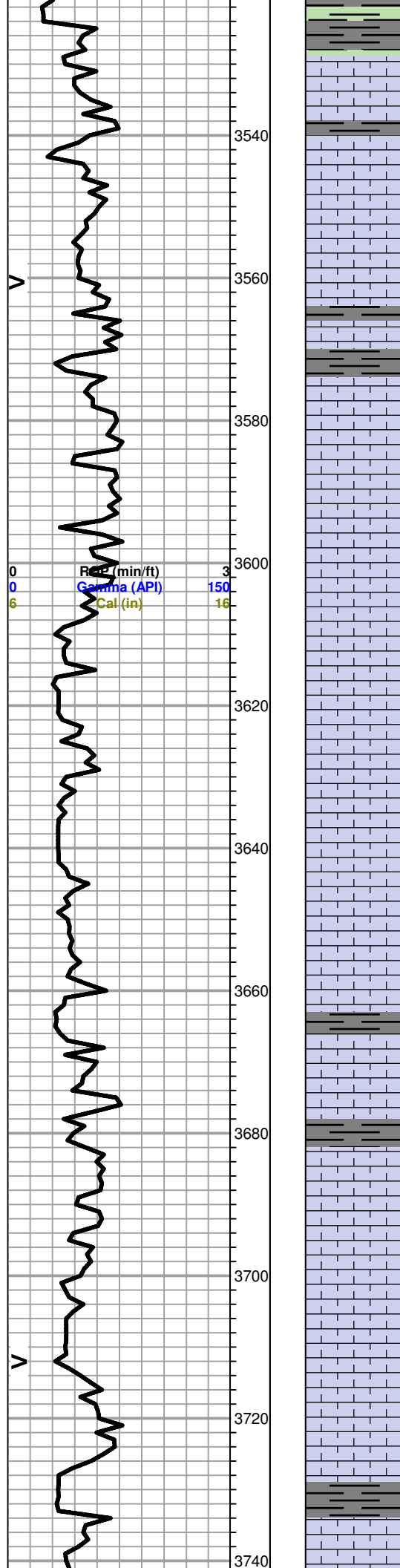
Printed by GEOstrip VC Striplog version 4.0.7.0 (www.grsi.ca)







### LANSING 3528 (-1648)



Limestone; cream-grey, fine xln, chalky, dense

Limestone; cream, fine xln, slightly fossiliferous chalky, few scattered inter xln porosity, trace brown stain, trace spotty free oil, faint odor

grey shale

Limestone; lt. grey-white-cream, fine xln, chalky, dense, fossiliferous, poor porosity, no shows

Limestone; buff, fine-medium xln, granular in part, chalky, few scattered inter xln-vuggy type porosity, brown stain, NSFO, faint odor

Limestone; cream-grey, fine-medium xln, chalky in part, slightly granular, fossiliferous poorly developed porosity, no shows

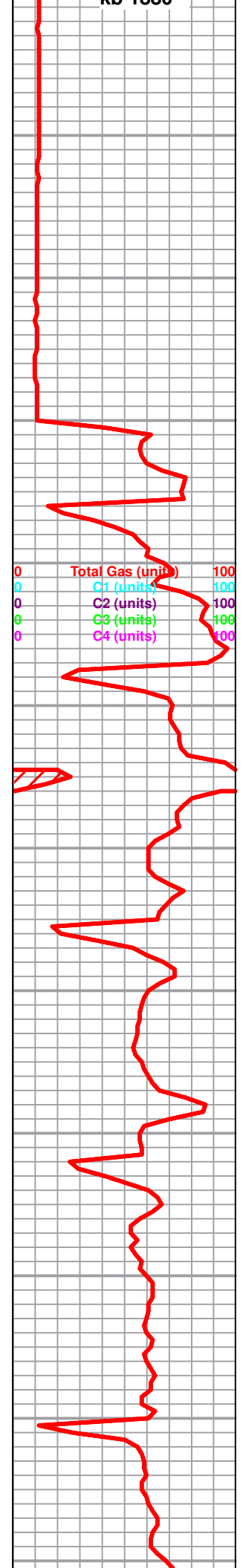
Limestone; lt. grey-white, fine xln, chalky in part, dense, plus white-grey boney Chert

Limestone; cream-white, very chalky, poorly deviated porosity, brown spotty stain, trace spotty free oil, very faint odor

Limestone; cream, fine xln, chalky, dense, no shows

Limestone; cream, oolitic/oomoldic, chalky in part, fair oomoldic porosity, no shows

grey-green shale



0	Total Gas (units)	100
0	C1 (units)	100
0	C2 (units)	100
0	C3 (units)	100
0	C4 (units)	100

