



**TRILOBITE
TESTING, INC.**

DRILL STEM TEST REPORT

Vincent Oil Co

14-29s-22w Ford

155 N Market Ste 700
Wichita Ks 67202

1-14 Sellard

Job Ticket: 52511

DST#: 2

ATTN: Tom Dudgeon

Test Start: 2013.10.16 @ 11:58:51

GENERAL INFORMATION:

Formation: **Mississippi**

Deviated: No Whipstock: ft (KB)

Time Tool Opened: 14:15:51

Time Test Ended: 20:54:06

Test Type: Conventional Bottom Hole (Reset)

Tester: Leal Cason

Unit No: 45

Interval: 5237.00 ft (KB) To 5274.00 ft (KB) (TVD)

Reference Elevations: 2457.00 ft (KB)

Total Depth: 5274.00 ft (KB) (TVD)

2445.00 ft (CF)

Hole Diameter: 7.88 inches Hole Condition: Good

KB to GR/CF: 12.00 ft

Serial #: 6798

Inside

Press @ Run Depth: 112.51 psig @ 5238.00 ft (KB)

Capacity: 8000.00 psig

Start Date: 2013.10.16

End Date: 2013.10.16

Last Calib.: 2013.10.16

Start Time: 11:58:52

End Time: 20:54:06

Time On Btm: 2013.10.16 @ 14:08:21

Time Off Btm: 2013.10.16 @ 18:55:51

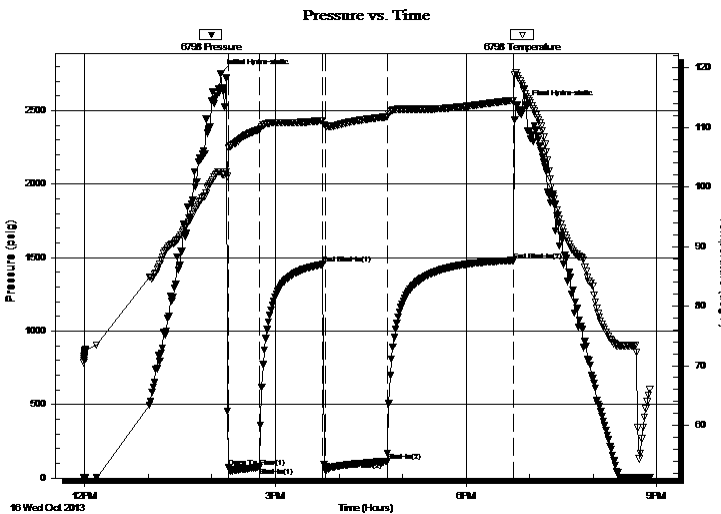
TEST COMMENT: IF: Strong Blow BOB In 15 Seconds GTS In 17 Minutes Gauged & Caught Sample

IS: Surface Blow Back

FF: Strong Blow BOB & GTS Immediate, Gauged Gas

FS: Surface Blow Back

PRESSURE SUMMARY



Time (Min.)	Pressure (psig)	Temp (deg F)	Annotation
0	2753.92	102.57	Initial Hydro-static
8	71.03	106.64	Open To Flow (1)
37	75.70	109.59	Shut-In(1)
97	1454.51	111.19	End Shut-In(1)
99	55.51	110.33	Open To Flow (2)
158	112.51	111.80	Shut-In(2)
277	1481.19	114.56	End Shut-In(2)
288	2540.37	115.71	Final Hydro-static

Recovery

Length (ft)	Description	Volume (bbl)
0.00	GTS	0.00
100.00	SOSM -1% O +99% M	1.40

* Recovery from multiple tests

Gas Rates

	Choke (inches)	Pressure (psig)	Gas Rate (Mcf/d)
First Gas Rate	0.25	28.00	67.26
Last Gas Rate	0.25	60.00	118.03
Max. Gas Rate	0.25	60.00	118.03



**TRILOBITE
TESTING, INC.**

DRILL STEM TEST REPORT

FLUID SUMMARY

Vincent Oil Co

14-29s-22w Ford

155 N Market Ste 700
Wichita Ks 67202

1-14 Sellard

Job Ticket: 52511

DST#: 2

ATTN: Tom Dudgeon

Test Start: 2013.10.16 @ 11:58:51

Mud and Cushion Information

Mud Type: Gel Chem

Cushion Type:

Oil API:

deg API

Mud Weight: 9.00 lb/gal

Cushion Length:

ft

Water Salinity:

ppm

Viscosity: 49.00 sec/qt

Cushion Volume:

bbbl

Water Loss: 10.79 in³

Gas Cushion Type:

Resistivity: ohm.m

Gas Cushion Pressure:

psig

Salinity: 7400.00 ppm

Filter Cake: 0.02 inches

Recovery Information

Recovery Table

Length ft	Description	Volume bbl
0.00	GTS	0.000
100.00	SOSM - 1% O +99% M	1.403

Total Length: 100.00 ft

Total Volume: 1.403 bbl

Num Fluid Samples: 0

Num Gas Bombs: 0

Serial #:

Laboratory Name:

Laboratory Location:

Recovery Comments:



**TRILOBITE
TESTING, INC.**

DRILL STEM TEST REPORT

GAS RATES

Vincent Oil Co

14-29s-22w Ford

155 N Market Ste 700
Wichita Ks 67202

1-14 Sellard

Job Ticket: 52511

DST#: 2

ATTN: Tom Dudgeon

Test Start: 2013.10.16 @ 11:58:51

Gas Rates Information

Temperature: 59 (deg F)
Relative Density: 0.65
Z Factor: 0.8

Gas Rates Table

Flow Period	Elapsed Time	Choke (inches)	Pressure (psig)	Gas Rate (Mcf/d)
1	20	0.25	28.00	67.26
1	20	0.25	28.00	67.26
1	30	0.25	28.00	67.26
2	10	0.25	40.00	86.30
2	20	0.25	46.00	95.82
2	30	0.25	50.00	102.16
2	40	0.25	60.00	118.03
2	50	0.25	60.00	118.03

Pressure vs. Time

