



TRILOBITE TESTING, INC.

DRILL STEM TEST REPORT

Vincent Oil Co

14-29s-22w Ford

155 N Market Ste 700
Wichita Ks 67202

1-14 Sellard

ATTN: Tom Dudgeon

Job Ticket: 52510

DST#: 1

Test Start: 2013.10.15 @ 11:50:38

GENERAL INFORMATION:

Formation: **Conglomerate Sand**

Deviated: No Whipstock: ft (KB)

Time Tool Opened: 15:05:08

Time Test Ended: 22:22:08

Test Type: Conventional Bottom Hole (Initial)

Tester: Leal Cason

Unit No: 45

Interval: 5174.00 ft (KB) To 5230.00 ft (KB) (TVD)

Reference Elevations: 2457.00 ft (KB)

Total Depth: 5230.00 ft (KB) (TVD)

2445.00 ft (CF)

Hole Diameter: 7.88 inches Hole Condition: Good

KB to GR/CF: 12.00 ft

Serial #: 6798

Inside

Press @ Run Depth: 61.14 psig @ 5175.00 ft (KB)

Capacity: 8000.00 psig

Start Date: 2013.10.15

End Date:

2013.10.15

Last Calib.:

2013.10.15

Start Time:

11:50:39

End Time:

22:22:08

Time On Btm:

2013.10.15 @ 15:02:38

Time Off Btm:

2013.10.15 @ 20:05:38

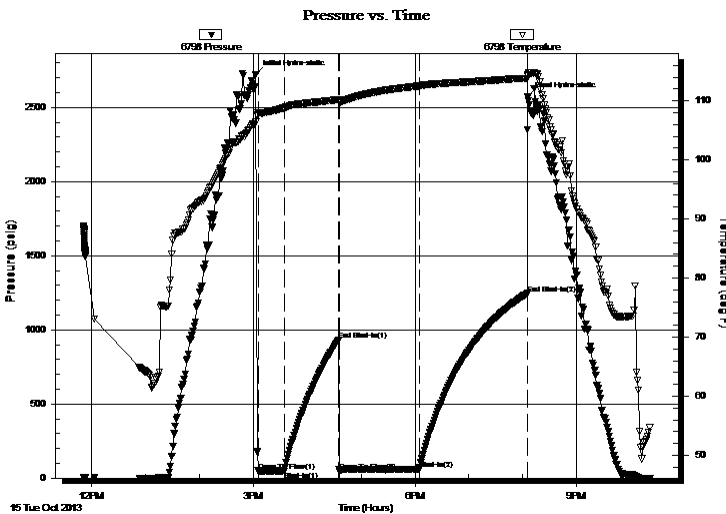
TEST COMMENT: IF: Strong blow , BOB 30 Seconds

IS: No Blow Back

FF: Strong Blow BOB Immediate GTS In 12 Minutes Gauged & Caught Sample

FS: No Blow Back

PRESSURE SUMMARY



Time (Min.)	Pressure (psig)	Temp (deg F)	Annotation
0	2721.81	106.38	Initial Hydro-static
3	49.35	107.98	Open To Flow (1)
32	48.69	108.78	Shut-In(1)
92	929.13	110.19	End Shut-In(1)
93	45.91	109.92	Open To Flow (2)
182	61.14	112.51	Shut-In(2)
303	1244.55	113.81	End Shut-In(2)
303	2571.73	114.40	Final Hydro-static

Recovery

Length (ft)	Description	Volume (bbl)
0.00	5103 GIP	0.00
63.00	GCM 2% G 98% M	0.88

Gas Rates

	Choke (inches)	Pressure (psig)	Gas Rate (Mcf/d)
First Gas Rate	0.25	7.00	33.95
Last Gas Rate	0.25	7.00	33.95
Max. Gas Rate	0.25	7.00	33.95



TRILOBITE
TESTING, INC.

DRILL STEM TEST REPORT

FLUID SUMMARY

Vincent Oil Co

14-29s-22w Ford

155 N Market Ste 700
Wichita Ks 67202

1-14 Sellard

Job Ticket: 52510

DST#: 1

ATTN: Tom Dudgeon

Test Start: 2013.10.15 @ 11:50:38

Mud and Cushion Information

Mud Type: Gel Chem

Cushion Type:

Oil API:

deg API

Mud Weight: 9.00 lb/gal

Cushion Length:

ft

Water Salinity:

ppm

Viscosity: 50.00 sec/qt

Cushion Volume:

bbbl

Water Loss: 9.58 in³

Gas Cushion Type:

Resistivity: ohm.m

Gas Cushion Pressure:

psig

Salinity: 4900.00 ppm

Filter Cake: 0.02 inches

Recovery Information

Recovery Table

Length ft	Description	Volume bbl
0.00	5103 GIP	0.000
63.00	GCM 2% G 98% M	0.884

Total Length: 63.00 ft Total Volume: 0.884 bbl

Num Fluid Samples: 0

Num Gas Bombs: 0

Serial #:

Laboratory Name:

Laboratory Location:

Recovery Comments:

