



TRILOBITE TESTING, INC.

DRILL STEM TEST REPORT

Mai Oil Co Inc
 8411 Preston Rd.
 STE 800
 Dallas Tx 75225-5520
 ATTN: Kurt Mai, Jim Musgro

21-14s-12w Russell, KS
Herber "A" #1
 Job Ticket: 54360 **DST#: 1**
 Test Start: 2013.10.26 @ 03:55:10

GENERAL INFORMATION:

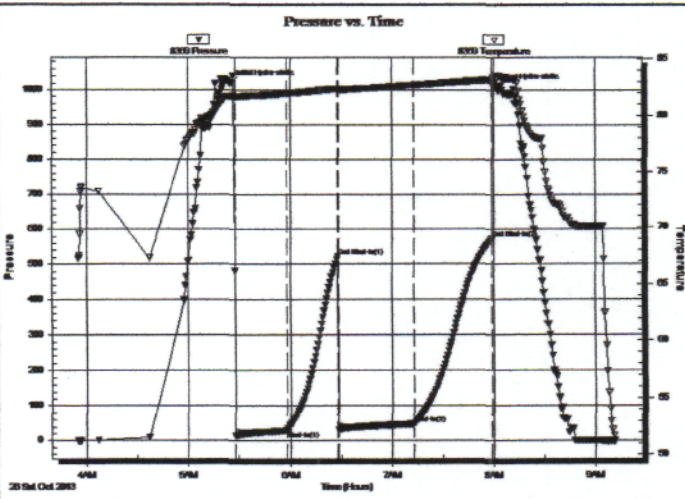
Formation: **Tarkio**
 Deviated: **No Whipstock:** ft (KB)
 Time Tool Opened: 05:27:35
 Time Test Ended: 09:12:04
 Interval: **2207.00 ft (KB) To 2246.00 ft (KB) (TVD)**
 Total Depth: 2246.00 ft (KB) (TVD)
 Hole Diameter: 7.88 inches Hole Condition: Fair
 Test Type: Conventional Bottom Hole (Initial)
 Tester: Ray Schwager
 Unit No: 70
 Reference Elevations: 1723.00 ft (KB)
 1715.00 ft (CF)
 KB to GR/CF: 8.00 ft

Serial #: 8369

Inside

Press@RunDepth: 48.77 psig @ 2213.00 ft (KB) Capacity: 8000.00 psig
 Start Date: 2013.10.26 End Date: 2013.10.26 Last Calib.: 2013.10.26
 Start Time: 03:55:10 End Time: 09:12:04 Time On Btm: 2013.10.26 @ 05:24:50
 Time Off Btm: 2013.10.26 @ 08:01:50

TEST COMMENT: 30-IFP-w k bl thru-out 1/2" to 1 1/4" bl
 30-ISIP-no bl
 30-FFP-w k to a strg bl in 35 min
 30-FSIP-no bl



PRESSURE SUMMARY

Time (Min.)	Pressure (psig)	Temp (deg F)	Annotation
0	1018.63	81.68	Initial Hydro-static
3	14.44	81.61	Open To Flow (1)
33	29.33	81.94	Shut-In(1)
64	522.76	82.36	End Shut-In(1)
64	31.67	82.29	Open To Flow (2)
109	48.77	82.70	Shut-In(2)
155	572.36	83.20	End Shut-In(2)
157	1008.32	83.53	Final Hydro-static

Recovery

Length (ft)	Description	Volume (bbl)
0.00	230' GIP	0.00
70.00	O&GCM 15%G10%O75%M	0.34

Gas Rates

	Choke (inches)	Pressure (psig)	Gas Rate (Mcf/d)



TRILOBITE TESTING, INC.

DRILL STEM TEST REPORT

Mai Oil Co Inc
 8411 Preston Rd.
 STE 800
 Dallas Tx 75225-5520
 ATTN: Kurt Mai, Jim Musgro

21-14s-12w Russell, KS
Herber "A" #1
 Job Ticket: 54361 **DST#: 2**
 Test Start: 2013.10.27 @ 16:01:03

GENERAL INFORMATION:

Formation: **LKC**
 Deviated: **No** Whipstock: ft (KB)
 Time Tool Opened: 17:19:58
 Time Test Ended: 20:26:27
 Interval: **2881.00 ft (KB) To 2964.00 ft (KB) (TVD)**
 Total Depth: **2964.00 ft (KB) (TVD)**
 Hole Diameter: **7.88 inches** Hole Condition: **Fair**

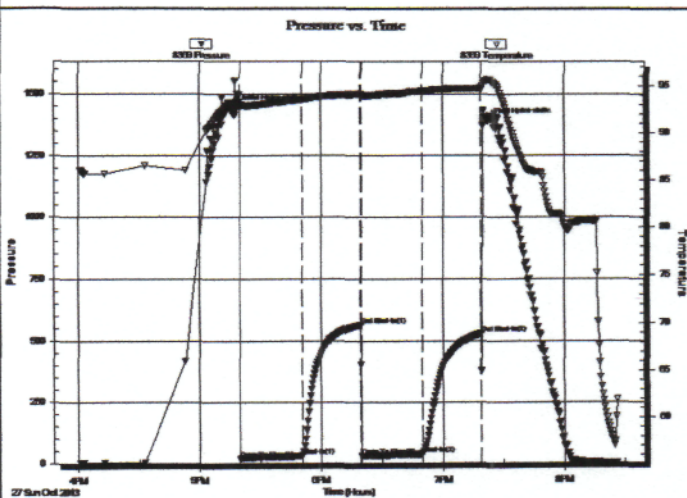
Test Type: **Conventional Bottom Hole (Reset)**
 Tester: **Ray Schwager**
 Unit No: **70**
 Reference Elevations: **1723.00 ft (KB)**
1715.00 ft (CF)
 KB to GR/CF: **8.00 ft**

Serial #: 8369

Inside

Press@RunDepth: **37.13 psig @ 2883.00 ft (KB)**
 Start Date: **2013.10.27** End Date: **2013.10.27**
 Start Time: **16:01:03** End Time: **20:26:27**
 Capacity: **8000.00 psig**
 Last Calib.: **2013.10.27**
 Time On Btm: **2013.10.27 @ 17:18:28**
 Time Off Btm: **2013.10.27 @ 19:22:13**

TEST COMMENT: 30-IFP-w k bl thru-out 1/4" bl
 30-ISIP-no bl
 30-FFP-vy w k surface bl thru-out
 30-FSIP-no bl



PRESSURE SUMMARY

Time (Min.)	Pressure (psig)	Temp (deg F)	Annotation
0	1443.49	93.24	Initial Hydro-static
2	16.56	92.65	Open To Flow (1)
32	29.53	93.53	Shut-In(1)
61	564.12	94.10	End Shut-In(1)
62	29.72	93.96	Open To Flow (2)
92	37.13	94.43	Shut-In(2)
121	529.09	94.73	End Shut-In(2)
124	1387.08	95.56	Final Hydro-static

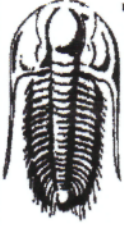
Recovery

Length (ft)	Description	Volume (bbl)
35.00	Mud	0.17

* Recovery from multiple tests

Gas Rates

Choke (inches)	Pressure (psig)	Gas Rate (Mcf/d)



TRILOBITE TESTING, INC.

DRILL STEM TEST REPORT

Mai Oil Co Inc
 8411 Preston Rd.
 STE 800
 Dallas Tx 75225-5520
 ATTN: Kurt Mai, Jim Musgro

21-14s-12w Russell,KS
Herber "A" #1
 Job Ticket: 54362 **DST#: 3**
 Test Start: 2013.10.28 @ 08:35:37

GENERAL INFORMATION:

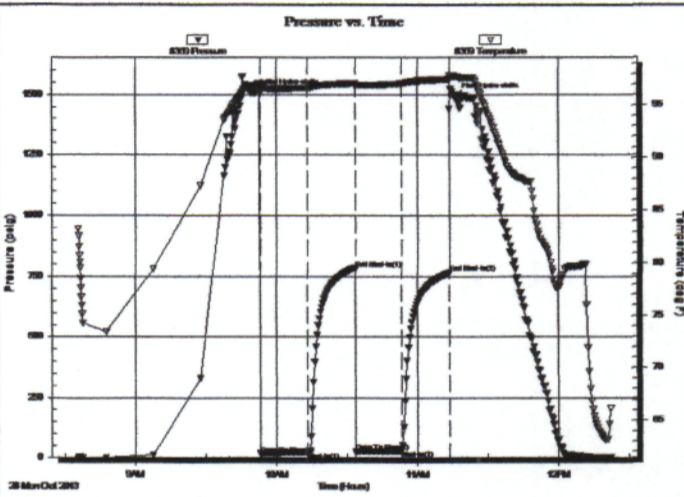
Formation: **LKC**
 Deviated: No Whipstock: ft (KB)
 Time Tool Opened: 09:53:17
 Time Test Ended: 12:22:32
 Interval: **3046.00 ft (KB) To 3114.00 ft (KB) (TVD)**
 Total Depth: 3114.00 ft (KB) (TVD)
 Hole Diameter: 7.88 inches Hole Condition: Fair
 Test Type: Conventional Bottom Hole (Reset)
 Tester: Ray Schwager
 Unit No: 70
 Reference Elevations: 1723.00 ft (KB)
 1715.00 ft (CF)
 KB to GR/CF: 8.00 ft

Serial #: 8369

Inside

Press@RunDepth: 28.91 psig @ 3053.00 ft (KB)
 Start Date: 2013.10.28 End Date: 2013.10.28
 Start Time: 08:35:37 End Time: 12:22:32
 Capacity: 8000.00 psig
 Last Calib.: 2013.10.28
 Time On Btm: 2013.10.28 @ 09:50:47
 Time Off Btm: 2013.10.28 @ 11:16:17

TEST COMMENT: 20-IFP-w k bl thru-out 1/4" bl
 20-ISIP-no bl
 20-FFP-no bl
 20-FSIP-no bl



PRESSURE SUMMARY

Time (Min.)	Pressure (psig)	Temp (deg F)	Annotation
0	1505.57	96.83	Initial Hydro-static
3	16.10	96.13	Open To Flow (1)
23	23.19	96.64	Shut-In(1)
43	784.13	97.07	End Shut-In(1)
43	24.65	96.79	Open To Flow (2)
63	28.91	97.02	Shut-In(2)
83	765.69	97.45	End Shut-In(2)
86	1489.44	97.72	Final Hydro-static

Recovery

Length (ft)	Description	Volume (bbl)
20.00	Mud	0.28

* Recovery from multiple tests

Gas Rates

	Choke (inches)	Pressure (psig)	Gas Rate (Mcf/d)