

TRILOBITE TESTING, INC

DRILL STEM TEST REPORT

Mai Oil Operations Inc
 8411 Preston Rd STE 800
 Dallas TX 75225
 ATTN: Jim MusGrove

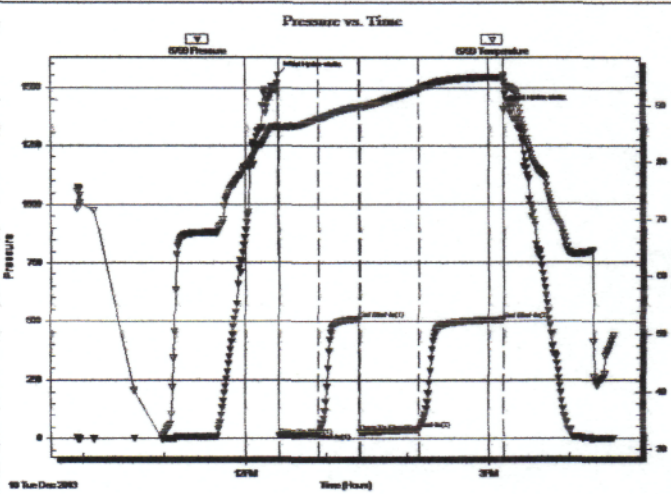
23-13s-14w Russell KS
KLC #1
 Job Ticket: 55365 **DST#: 1**
 Test Start: 2013.12.10 @ 09:56:00

GENERAL INFORMATION:

Formation: **LKC "A-B"**
 Deviated: No Whipstock: ft (KB)
 Time Tool Opened: 12:25:15
 Time Test Ended: 16:33:00
 Interval: **3017.00 ft (KB) To 3060.00 ft (KB) (TVD)**
 Total Depth: 3060.00 ft (KB) (TVD)
 Hole Diameter: 7.88 inches Hole Condition: Fair
 Test Type: Conventional Bottom Hole (Initial)
 Tester: Cody Bloedorn
 Unit No: 73
 Reference Elevations: 1840.00 ft (KB)
 1832.00 ft (CF)
 KB to GR/CF: 8.00 ft

Serial #: 6799 Inside
 Press@RunDepth: 39.75 psig @ 3054.00 ft (KB)
 Start Date: 2013.12.10 End Date: 2013.12.10
 Start Time: 09:56:05 End Time: 16:32:59
 Capacity: 8000.00 psig
 Last Calib.: 2013.12.10
 Time On Btm: 2013.12.10 @ 12:24:45
 Time Off Btm: 2013.12.10 @ 15:11:15

TEST COMMENT: 30 - IF- 6" blow
 30 - IS- No return
 45 - FF- 5 1/2" blow
 60 - FS- No return



PRESSURE SUMMARY

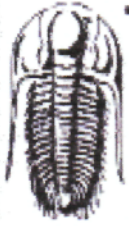
Time (Min.)	Pressure (psig)	Temp (deg F)	Annotation
0	1551.21	86.45	Initial Hydro-static
1	13.00	86.17	Open To Flow (1)
30	23.91	87.69	Shut-In(1)
60	508.91	89.94	End Shut-In(1)
61	28.98	89.86	Open To Flow (2)
104	39.75	93.05	Shut-In(2)
167	505.79	95.06	End Shut-In(2)
167	1408.40	95.37	Final Hydro-static

Recovery

Length (ft)	Description	Volume (bbl)
57.00	MW - show of oil, 20%M, 80%W	0.80
15.00	GO, 30%G, 70%O	0.21
0.00	124' of G.I.P.	0.00

Gas Rates

	Choke (inches)	Pressure (psig)	Gas Rate (Mcf/d)



TRILOBITE TESTING, INC.

DRILL STEM TEST REPORT

Mai Oil Operations Inc
 8411 Preston Rd STE 800
 Dallas TX 75225
 ATTN: Jim MusGrove

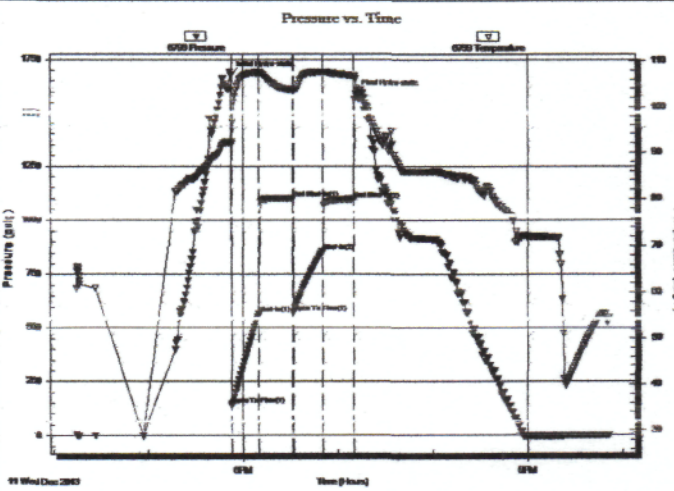
23-13s-14w Russell KS
KLC #1
 Job Ticket: 55366 DST#: 2
 Test Start: 2013.12.11 @ 16:15:00

GENERAL INFORMATION:

Formation: **Arbuckle**
 Deviated: **No Whipstock** ft (KB)
 Time Tool Opened: 17:52:45
 Time Test Ended: 21:51:30
 Interval: **3244.00 ft (KB) To 3303.00 ft (KB) (TVD)**
 Total Depth: 3303.00 ft (KB) (TVD)
 Hole Diameter: 7.88 inches Hole Condition: Fair
 Test Type: **Conventional Bottom Hole (Reset)**
 Tester: **Cody Bloedorn**
 Unit No: **73**
 Reference Elevations: 1840.00 ft (KB)
 1832.00 ft (CF)
 KB to GR/CF: 8.00 ft

Serial #: **6799** Inside
 Press@RunDepth: 857.52 psig @ 3281.00 ft (KB) Capacity: 8000.00 psig
 Start Date: 2013.12.11 End Date: 2013.12.11 Last Calib.: 2013.12.11
 Start Time: 16:15:05 End Time: 21:51:29 Time On Btm: 2013.12.11 @ 17:52:30
 Time Off Btm: 2013.12.11 @ 19:11:15

TEST COMMENT: 20 - IF- B.O.B. in 30 seconds
 20 - IS! Surface return
 20 - FF- B.O.B. in 30 seconds
 20 - FS! No return



PRESSURE SUMMARY

Time (Min.)	Pressure (psig)	Temp (deg F)	Annotation
0	1679.15	92.20	Initial Hydro static
1	141.14	91.80	Open To Flow (1)
18	565.49	107.25	Shut-In(1)
39	1099.95	103.57	End Shut-In(1)
40	570.54	103.39	Open To Flow (2)
58	857.52	107.51	Shut-In(2)
78	1096.59	106.65	End Shut-In(2)
79	1509.10	100.14	Final Hydro-static

Recovery

Length (ft)	Description	Volume (bbl)
310.00	WM, 10%W, 90%M	4.35
1612.00	MW, 20%M, 80%W	22.61

* Recovery from multiple tests

Gas Rates

Choke (inches)	Pressure (psig)	Gas Rate (Mcf/d)