



DRILL STEM TEST REPORT

Prepared For: **Landmark Resources, Inc**

1616 Voss Rd STE 600
Houston, TX 77057

ATTN: Max Lovely

Sleeping Indian 1-12

12 17s 34w Scott,KS

Start Date: 2014.01.05 @ 05:17:00

End Date: 2014.01.05 @ 13:13:15

Job Ticket #: 55679 DST #: 1

Trilobite Testing, Inc
PO Box 362 Hays, KS 67601
ph: 785-625-4778 fax: 785-625-5620

Printed: 2014.01.10 @ 14:52:30



TRILOBITE TESTING, INC

DRILL STEM TEST REPORT

Landmark Resources, Inc

12 17s 34w Scott,KS

1616 Voss Rd STE 600
Houston, TX 77057

Sleeping Indian 1-12

ATTN: Max Lovely

Job Ticket: 55679

DST#: 1

Test Start: 2014.01.05 @ 05:17:00

GENERAL INFORMATION:

Formation: **LKC D-F**

Deviated: No Whipstock: ft (KB)

Time Tool Opened: 07:54:00

Time Test Ended: 13:13:15

Test Type: Conventional Bottom Hole (Initial)

Tester: Bradley Walter

Unit No: 69

Interval: 4093.00 ft (KB) To 4157.00 ft (KB) (TVD)

Reference Elevations: 3104.00 ft (KB)

Total Depth: 4157.00 ft (KB) (TVD)

3092.00 ft (CF)

Hole Diameter: 7.88 inches Hole Condition: Good

KB to GR/CF: 12.00 ft

Serial #: 8522 Outside

Press@RunDepth: 628.87 psig @ 4094.00 ft (KB)

Capacity: 8000.00 psig

Start Date: 2014.01.05

End Date:

2014.01.05

Last Calib.: 2014.01.05

Start Time: 05:17:05

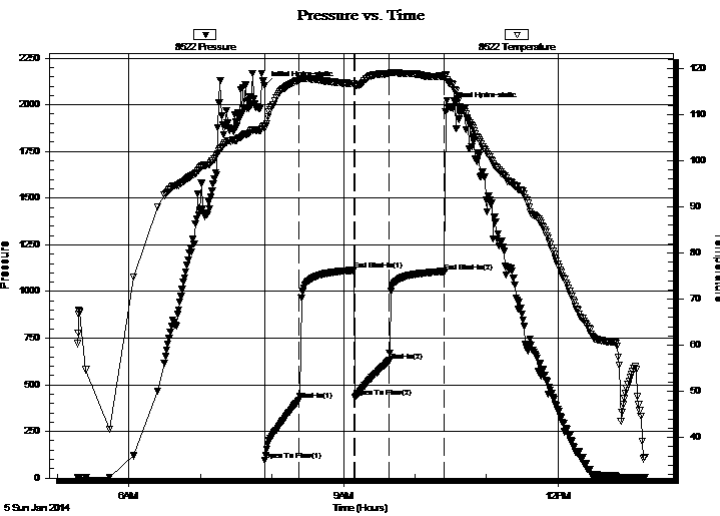
End Time:

13:13:14

Time On Btm: 2014.01.05 @ 07:53:45

Time Off Btm: 2014.01.05 @ 10:28:45

TEST COMMENT: IF: BOB @ 3 min.
IS: No return.
FF: BOB @ 5 min.
FS: No return.



PRESSURE SUMMARY

Time (Min.)	Pressure (psig)	Temp (deg F)	Annotation
0	2102.42	107.56	Initial Hydro-static
1	95.45	106.90	Open To Flow (1)
29	416.82	117.40	Shut-In(1)
76	1113.88	116.59	End Shut-In(1)
76	431.03	116.31	Open To Flow (2)
105	628.87	118.94	Shut-In(2)
151	1107.42	118.35	End Shut-In(2)
155	1991.40	116.84	Final Hydro-static

Recovery

Length (ft)	Description	Volume (bbl)
1290.00	mcw 10m 90w (oil spots in tool)	11.57

Gas Rates

Choke (inches)	Pressure (psig)	Gas Rate (Mcf/d)



**TRILOBITE
TESTING, INC**

DRILL STEM TEST REPORT

TOOL DIAGRAM

Landmark Resources, Inc

12 17s 34w Scott,KS

1616 Voss Rd STE 600
Houston, TX 77057

Sleeping Indian 1-12

Job Ticket: 55679

DST#: 1

ATTN: Max Lovely

Test Start: 2014.01.05 @ 05:17:00

Tool Information

Drill Pipe:	Length: 3813.00 ft	Diameter: 3.20 inches	Volume: 37.93 bbl	Tool Weight: 2500.00 lb
Heavy Wt. Pipe:	Length: 0.00 ft	Diameter: 0.00 inches	Volume: 0.00 bbl	Weight set on Packer: 25000.00 lb
Drill Collar:	Length: 275.00 ft	Diameter: 2.35 inches	Volume: 1.48 bbl	Weight to Pull Loose: 85000.00 lb
			<u>Total Volume: 39.41 bbl</u>	Tool Chased 0.00 ft
Drill Pipe Above KB:	22.00 ft			String Weight: Initial 72000.00 lb
Depth to Top Packer:	4093.00 ft			Final 76000.00 lb
Depth to Bottom Packer:	ft			
Interval between Packers:	64.00 ft			
Tool Length:	91.00 ft			
Number of Packers:	2	Diameter: 6.75 inches		

Tool Comments:

Tool Description

Length (ft) Serial No. Position Depth (ft) Accum. Lengths

Tool Description	Length (ft)	Serial No.	Position	Depth (ft)	Accum. Lengths
Change Over Sub	1.00			4067.00	
Shut In Tool	5.00			4072.00	
Hydraulic tool	5.00			4077.00	
Jars	5.00			4082.00	
Safety Joint	2.00			4084.00	
Packer	5.00			4089.00	27.00 Bottom Of Top Packer
Packer	4.00			4093.00	
Stubb	1.00			4094.00	
Recorder	0.00	8678	Inside	4094.00	
Recorder	0.00	8522	Outside	4094.00	
Perforations	27.00			4121.00	
Change Over Sub	1.00			4122.00	
Drill Pipe	31.00			4153.00	
Change Over Sub	1.00			4154.00	
Bullnose	3.00			4157.00	64.00 Bottom Packers & Anchor

Total Tool Length: 91.00



**TRILOBITE
TESTING, INC**

DRILL STEM TEST REPORT

FLUID SUMMARY

Landmark Resources, Inc

12 17s 34w Scott,KS

1616 Voss Rd STE 600
Houston, TX 77057

Sleeping Indian 1-12

Job Ticket: 55679

DST#: 1

ATTN: Max Lovely

Test Start: 2014.01.05 @ 05:17:00

Mud and Cushion Information

Mud Type: Gel Chem

Cushion Type:

Oil API:

0 deg API

Mud Weight: 10.00 lb/gal

Cushion Length:

ft

Water Salinity:

52000 ppm

Viscosity: 57.00 sec/qt

Cushion Volume:

bbbl

Water Loss: 8.76 in³

Gas Cushion Type:

Resistivity: ohm.m

Gas Cushion Pressure:

psig

Salinity: 5200.00 ppm

Filter Cake: 1.00 inches

Recovery Information

Recovery Table

Length ft	Description	Volume bbl
1290.00	mcw 10m 90w (oil spots in tool)	11.572

Total Length: 1290.00 ft Total Volume: 11.572 bbl

Num Fluid Samples: 0

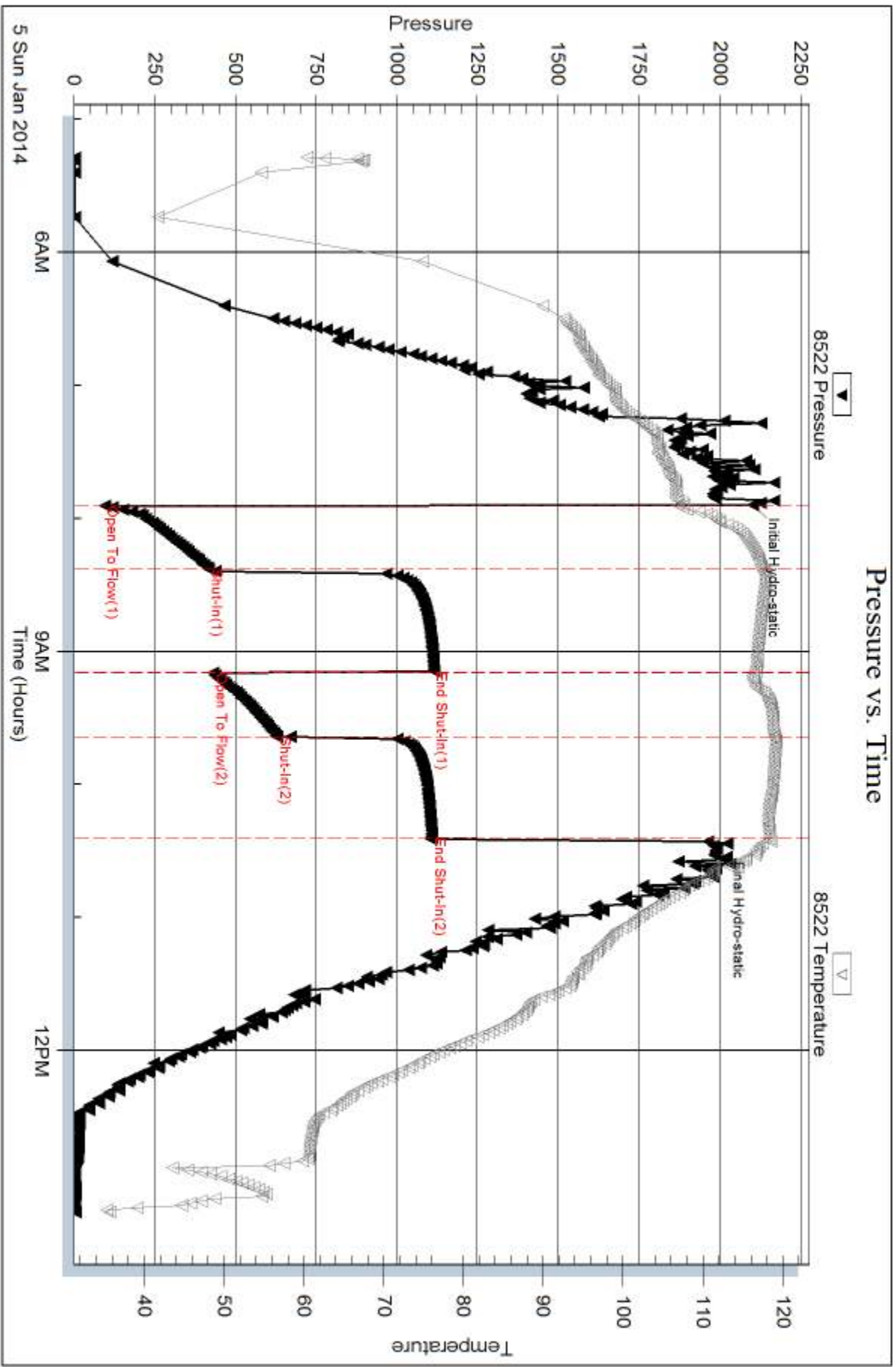
Num Gas Bombs: 0

Serial #:

Laboratory Name:

Laboratory Location:

Recovery Comments: rw is .208 @ 49F = 52000ppm



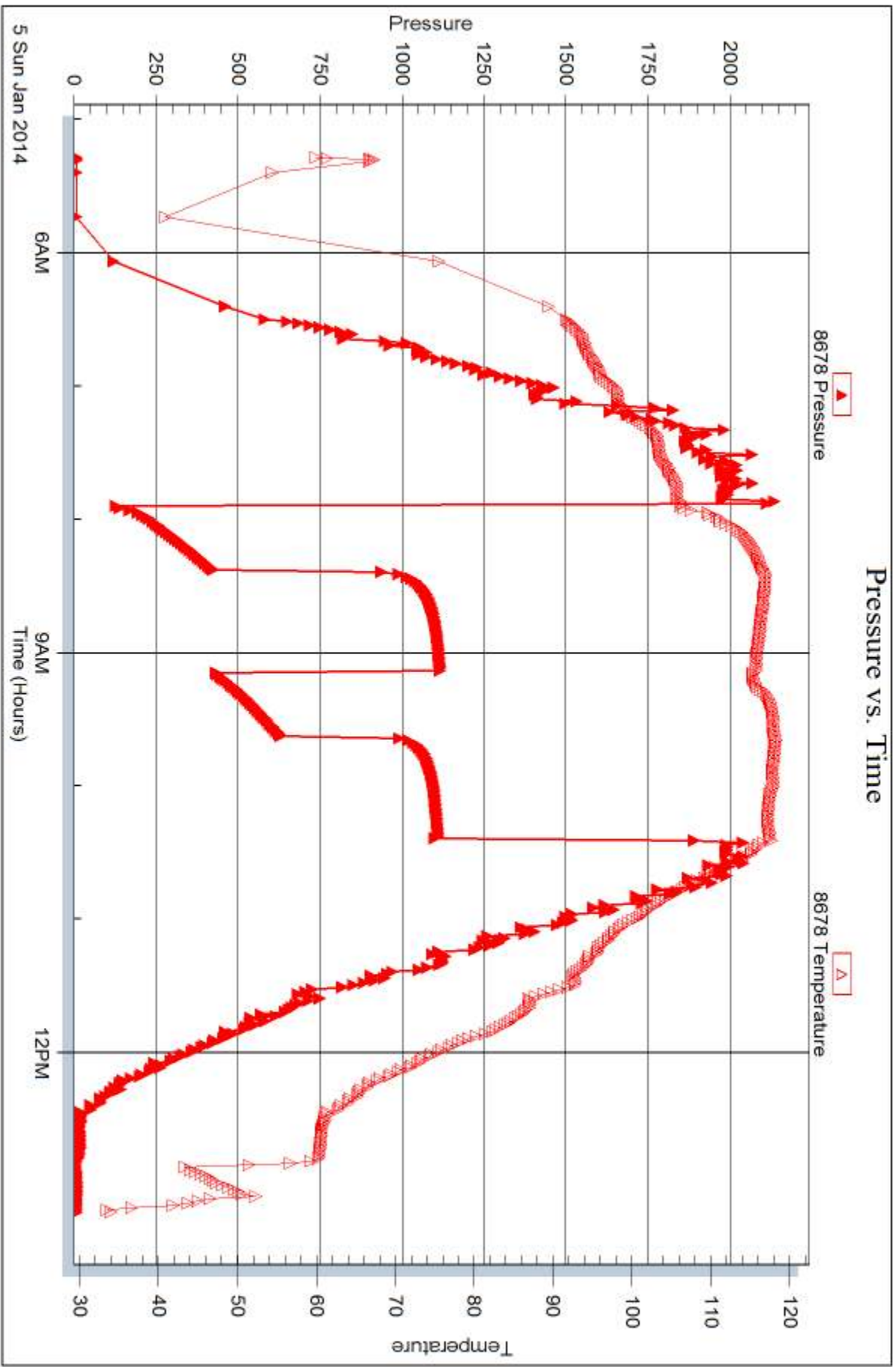
Serial #: 8678

Inside

Landmark Resources, Inc

Sleeping Indian 1-12

DST Test Number: 1





DRILL STEM TEST REPORT

Prepared For: **Landmark Resources, Inc**

1616 Voss Rd STE 600
Houston, TX 77057

ATTN: Max Lovely

Sleeping Indian 1-12

12 17s 34w Scott,KS

Start Date: 2014.01.06 @ 16:57:00

End Date: 2014.01.07 @ 01:16:00

Job Ticket #: 55680 DST #: 2

Trilobite Testing, Inc
PO Box 362 Hays, KS 67601
ph: 785-625-4778 fax: 785-625-5620

Printed: 2014.01.10 @ 14:52:07



TRILOBITE TESTING, INC

DRILL STEM TEST REPORT

Landmark Resources, Inc

12 17s 34w Scott,KS

1616 Voss Rd STE 600
Houston, TX 77057

Sleeping Indian 1-12

ATTN: Max Lovely

Job Ticket: 55680

DST#: 2

Test Start: 2014.01.06 @ 16:57:00

GENERAL INFORMATION:

Formation: **Marmaton**

Deviated: No Whipstock: ft (KB)

Time Tool Opened: 19:20:45

Time Test Ended: 01:16:00

Test Type: Conventional Bottom Hole (Reset)

Tester: Bradley Walter

Unit No: 69

Interval: 4447.00 ft (KB) To 4485.00 ft (KB) (TVD)

Reference Elevations: 3104.00 ft (KB)

Total Depth: 4485.00 ft (KB) (TVD)

3092.00 ft (CF)

Hole Diameter: 7.88 inches Hole Condition: Good

KB to GR/CF: 12.00 ft

Serial #: 8522 Outside

Press@RunDepth: 342.49 psig @ 4448.00 ft (KB)

Capacity: 8000.00 psig

Start Date: 2014.01.06

End Date:

2014.01.07

Last Calib.:

2014.01.07

Start Time: 16:57:05

End Time:

01:15:59

Time On Btm:

2014.01.06 @ 19:20:30

Time Off Btm:

2014.01.06 @ 23:02:00

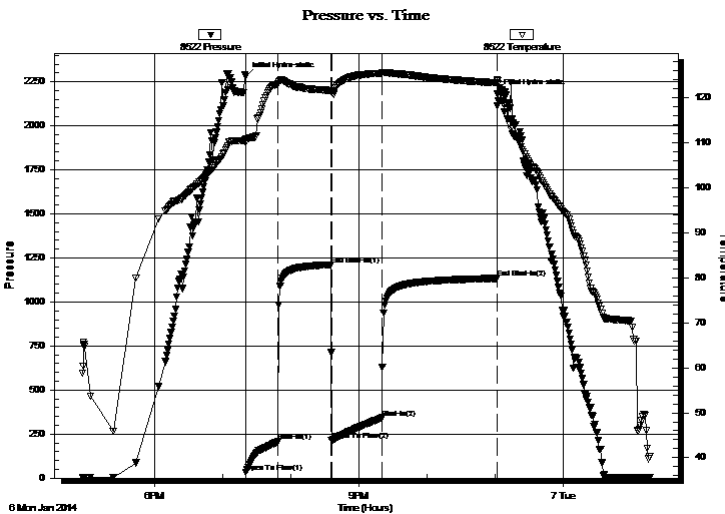
TEST COMMENT: IF: BOB @ 13 min.

IS: No return.

FF: 3" blow.

FS: No return.

PRESSURE SUMMARY



Time (Min.)	Pressure (psig)	Temp (deg F)	Annotation
0	2277.95	110.94	Initial Hydro-static
1	31.97	110.00	Open To Flow (1)
29	207.88	123.04	Shut-In(1)
75	121.99	121.57	End Shut-In(1)
76	213.31	121.14	Open To Flow (2)
120	342.49	125.42	Shut-In(2)
221	1134.08	123.33	End Shut-In(2)
222	2182.20	123.74	Final Hydro-static

Recovery

Length (ft)	Description	Volume (bbl)
720.00	mcw 10m 90w	5.90

* Recovery from multiple tests

Gas Rates

	Choke (inches)	Pressure (psig)	Gas Rate (Mcf/d)



**TRILOBITE
TESTING, INC**

DRILL STEM TEST REPORT

TOOL DIAGRAM

Landmark Resources, Inc

12 17s 34w Scott,KS

1616 Voss Rd STE 600
Houston, TX 77057

Sleeping Indian 1-12

Job Ticket: 55680

DST#: 2

ATTN: Max Lovely

Test Start: 2014.01.06 @ 16:57:00

Tool Information

Drill Pipe:	Length: 4149.00 ft	Diameter: 3.20 inches	Volume: 41.27 bbl	Tool Weight:	2500.00 lb
Heavy Wt. Pipe:	Length: 0.00 ft	Diameter: 0.00 inches	Volume: 0.00 bbl	Weight set on Packer:	25000.00 lb
Drill Collar:	Length: 275.00 ft	Diameter: 2.35 inches	Volume: 1.48 bbl	Weight to Pull Loose:	80000.00 lb
			<u>Total Volume: 42.75 bbl</u>	Tool Chased	0.00 ft
Drill Pipe Above KB:	4.00 ft			String Weight: Initial	73000.00 lb
Depth to Top Packer:	4447.00 ft			Final	74000.00 lb
Depth to Bottom Packer:	ft				
Interval between Packers:	38.00 ft				
Tool Length:	65.00 ft				
Number of Packers:	2	Diameter: 6.75 inches			

Tool Comments:

Tool Description

Tool Description	Length (ft)	Serial No.	Position	Depth (ft)	Accum. Lengths
Change Over Sub	1.00			4421.00	
Shut In Tool	5.00			4426.00	
Hydraulic tool	5.00			4431.00	
Jars	5.00			4436.00	
Safety Joint	2.00			4438.00	
Packer	5.00			4443.00	27.00 Bottom Of Top Packer
Packer	4.00			4447.00	
Stubb	1.00			4448.00	
Recorder	0.00	8678	Inside	4448.00	
Recorder	0.00	8522	Outside	4448.00	
Perforations	34.00			4482.00	
Bullnose	3.00			4485.00	38.00 Bottom Packers & Anchor

Total Tool Length: 65.00



**TRILOBITE
TESTING, INC**

DRILL STEM TEST REPORT

FLUID SUMMARY

Landmark Resources, Inc

12 17s 34w Scott,KS

1616 Voss Rd STE 600
Houston, TX 77057

Sleeping Indian 1-12

Job Ticket: 55680

DST#: 2

ATTN: Max Lovely

Test Start: 2014.01.06 @ 16:57:00

Mud and Cushion Information

Mud Type: Gel Chem

Cushion Type:

Oil API:

0 deg API

Mud Weight: 9.00 lb/gal

Cushion Length:

ft

Water Salinity:

50000 ppm

Viscosity: 52.00 sec/qt

Cushion Volume:

bbbl

Water Loss: 8.77 in³

Gas Cushion Type:

Resistivity: ohm.m

Gas Cushion Pressure:

psig

Salinity: 5000.00 ppm

Filter Cake: 1.00 inches

Recovery Information

Recovery Table

Length ft	Description	Volume bbl
720.00	mcw 10m 90w	5.902

Total Length: 720.00 ft Total Volume: 5.902 bbl

Num Fluid Samples: 0

Num Gas Bombs: 0

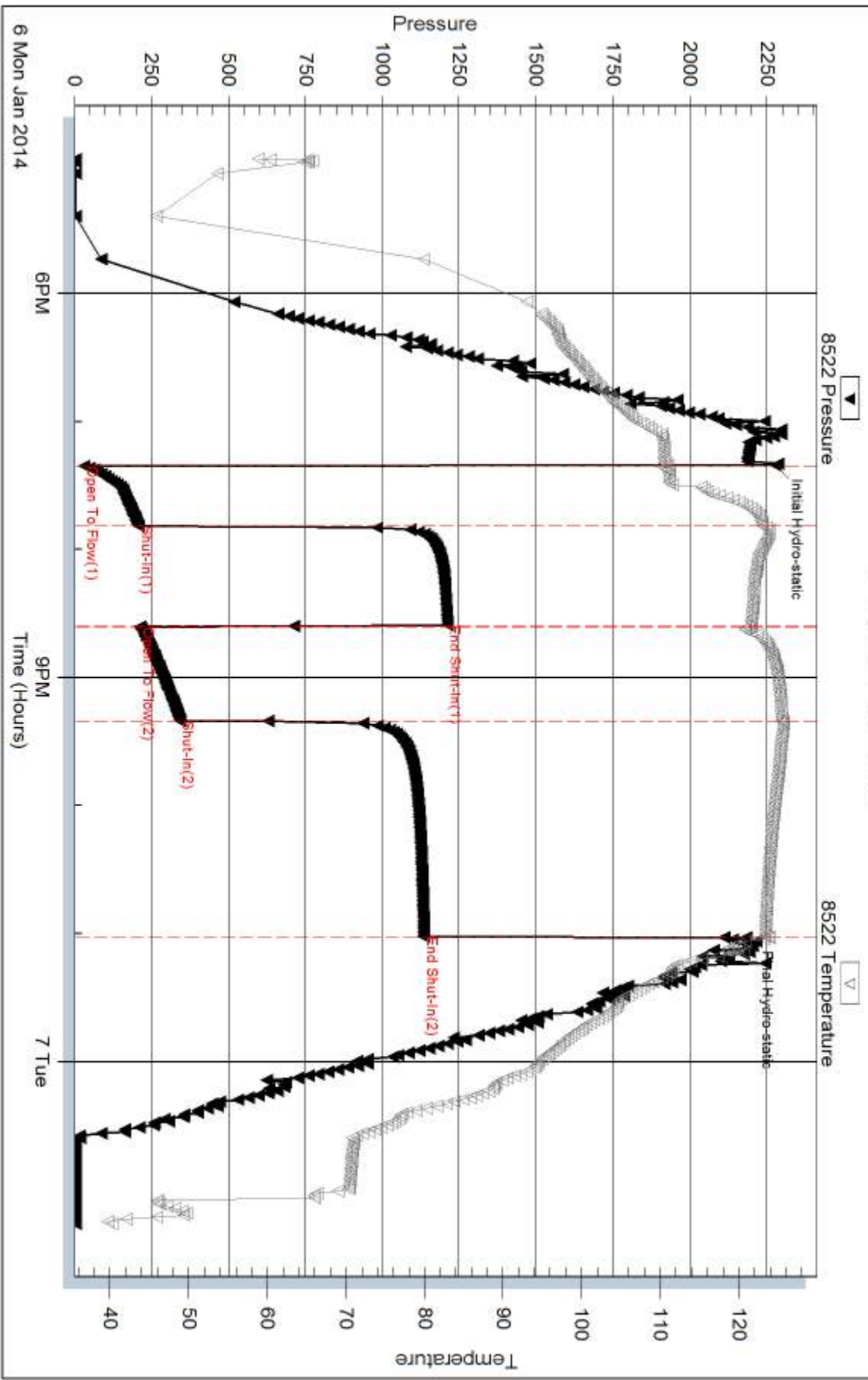
Serial #:

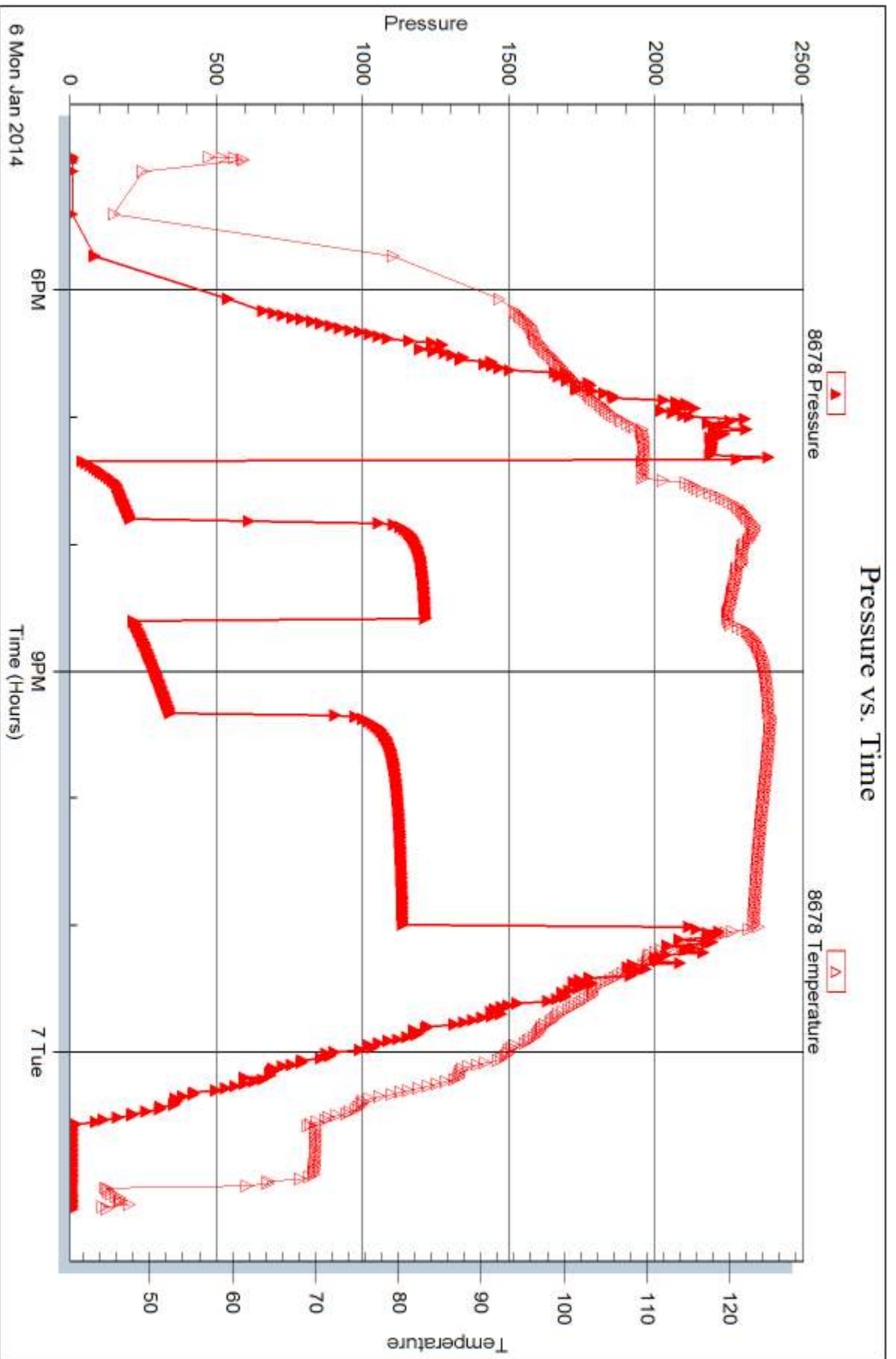
Laboratory Name:

Laboratory Location:

Recovery Comments: rw is .242 @ 44F = 50,000ppm

Pressure vs. Time







DRILL STEM TEST REPORT

Prepared For: **Landmark Resources, Inc**

1616 Voss Rd STE 600
Houston, TX 77057

ATTN: Max Lovely

Sleeping Indian 1-12

12 17s 34w Scott,KS

Start Date: 2014.01.07 @ 18:09:00

End Date: 2014.01.08 @ 00:58:30

Job Ticket #: 55681 DST #: 3

Trilobite Testing, Inc

PO Box 362 Hays, KS 67601

ph: 785-625-4778 fax: 785-625-5620

Printed: 2014.01.10 @ 14:51:42



TRILOBITE TESTING, INC

DRILL STEM TEST REPORT

Landmark Resources, Inc

12 17s 34w Scott,KS

1616 Voss Rd STE 600
Houston, TX 77057

Sleeping Indian 1-12

ATTN: Max Lovely

Job Ticket: 55681

DST#: 3

Test Start: 2014.01.07 @ 18:09:00

GENERAL INFORMATION:

Formation: **Myric Station, Ft. S**

Deviated: No Whipstock: ft (KB)

Time Tool Opened: 20:23:15

Time Test Ended: 00:58:30

Test Type: Conventional Bottom Hole (Reset)

Tester: Bradley Walter

Unit No: 69

Interval: 4566.00 ft (KB) To 4610.00 ft (KB) (TVD)

Reference Elevations: 3104.00 ft (KB)

Total Depth: 4610.00 ft (KB) (TVD)

3092.00 ft (CF)

Hole Diameter: 7.88 inches Hole Condition: Good

KB to GR/CF: 12.00 ft

Serial #: 8522 Outside

Press@RunDepth: 26.31 psig @ 4567.00 ft (KB)

Capacity: 8000.00 psig

Start Date: 2014.01.07

End Date:

2014.01.08

Last Calib.:

2014.01.08

Start Time: 18:09:05

End Time:

00:58:29

Time On Btm:

2014.01.07 @ 20:23:00

Time Off Btm:

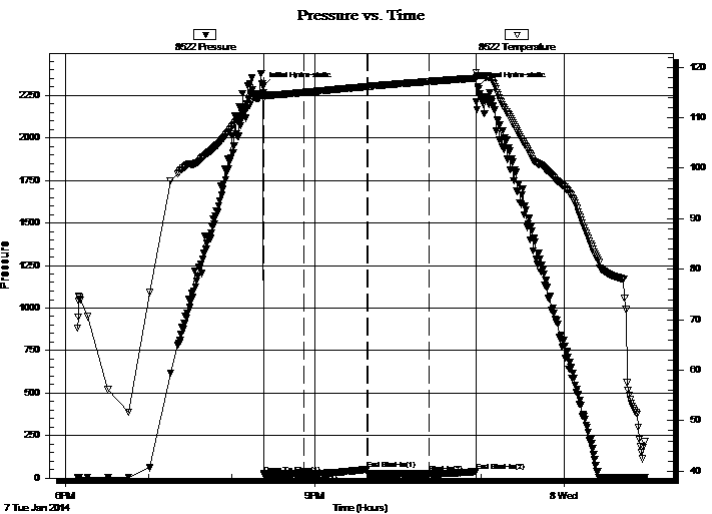
2014.01.07 @ 22:58:00

TEST COMMENT: IF: Surface blow, died @ 5 min.

IS: No return.

FF: No blow.

FS: No return.



PRESSURE SUMMARY

Time (Min.)	Pressure (psig)	Temp (deg F)	Annotation
0	2304.02	114.87	Initial Hydro-static
1	23.75	113.84	Open To Flow (1)
29	25.71	114.98	Shut-In(1)
75	53.33	116.17	End Shut-In(1)
76	25.05	116.17	Open To Flow (2)
120	26.31	117.17	Shut-In(2)
154	38.68	117.82	End Shut-In(2)
155	2300.27	118.33	Final Hydro-static

Recovery

Length (ft)	Description	Volume (bbl)
3.00	Mud 100m	0.02

* Recovery from multiple tests

Gas Rates

Choke (inches)	Pressure (psig)	Gas Rate (Mcf/d)



**TRILOBITE
TESTING, INC**

DRILL STEM TEST REPORT

TOOL DIAGRAM

Landmark Resources, Inc

12 17s 34w Scott,KS

1616 Voss Rd STE 600
Houston, TX 77057

Sleeping Indian 1-12

Job Ticket: 55681

DST#: 3

ATTN: Max Lovely

Test Start: 2014.01.07 @ 18:09:00

Tool Information

Drill Pipe:	Length: 4274.00 ft	Diameter: 3.20 inches	Volume: 42.52 bbl	Tool Weight: 2500.00 lb
Heavy Wt. Pipe:	Length: 0.00 ft	Diameter: 0.00 inches	Volume: 0.00 bbl	Weight set on Packer: 25000.00 lb
Drill Collar:	Length: 275.00 ft	Diameter: 2.35 inches	Volume: 1.48 bbl	Weight to Pull Loose: 85000.00 lb
			<u>Total Volume: 44.00 bbl</u>	Tool Chased 0.00 ft
Drill Pipe Above KB:	10.00 ft			String Weight: Initial 77000.00 lb
Depth to Top Packer:	4566.00 ft			Final 77000.00 lb
Depth to Bottom Packer:	ft			
Interval between Packers:	44.00 ft			
Tool Length:	71.00 ft			
Number of Packers:	2	Diameter: 6.75 inches		

Tool Comments:

Tool Description

Tool Description	Length (ft)	Serial No.	Position	Depth (ft)	Accum. Lengths
Change Over Sub	1.00			4540.00	
Shut In Tool	5.00			4545.00	
Hydraulic tool	5.00			4550.00	
Jars	5.00			4555.00	
Safety Joint	2.00			4557.00	
Packer	5.00			4562.00	27.00 Bottom Of Top Packer
Packer	4.00			4566.00	
Stubb	1.00			4567.00	
Recorder	0.00	8678	Inside	4567.00	
Recorder	0.00	8522	Outside	4567.00	
Perforations	7.00			4574.00	
Change Over Sub	1.00			4575.00	
Drill Pipe	31.00			4606.00	
Change Over Sub	1.00			4607.00	
Bullnose	3.00			4610.00	44.00 Bottom Packers & Anchor

Total Tool Length: 71.00



**TRILOBITE
TESTING, INC**

DRILL STEM TEST REPORT

FLUID SUMMARY

Landmark Resources, Inc

12 17s 34w Scott,KS

1616 Voss Rd STE 600
Houston, TX 77057

Sleeping Indian 1-12

Job Ticket: 55681

DST#: 3

ATTN: Max Lovely

Test Start: 2014.01.07 @ 18:09:00

Mud and Cushion Information

Mud Type: Gel Chem

Cushion Type:

Oil API:

0 deg API

Mud Weight: 9.00 lb/gal

Cushion Length:

ft

Water Salinity:

0 ppm

Viscosity: 54.00 sec/qt

Cushion Volume:

bbbl

Water Loss: 7.98 in³

Gas Cushion Type:

Resistivity: ohm.m

Gas Cushion Pressure:

psig

Salinity: 5000.00 ppm

Filter Cake: 1.00 inches

Recovery Information

Recovery Table

Length ft	Description	Volume bbl
3.00	Mud 100m	0.016

Total Length: 3.00 ft Total Volume: 0.016 bbl

Num Fluid Samples: 0

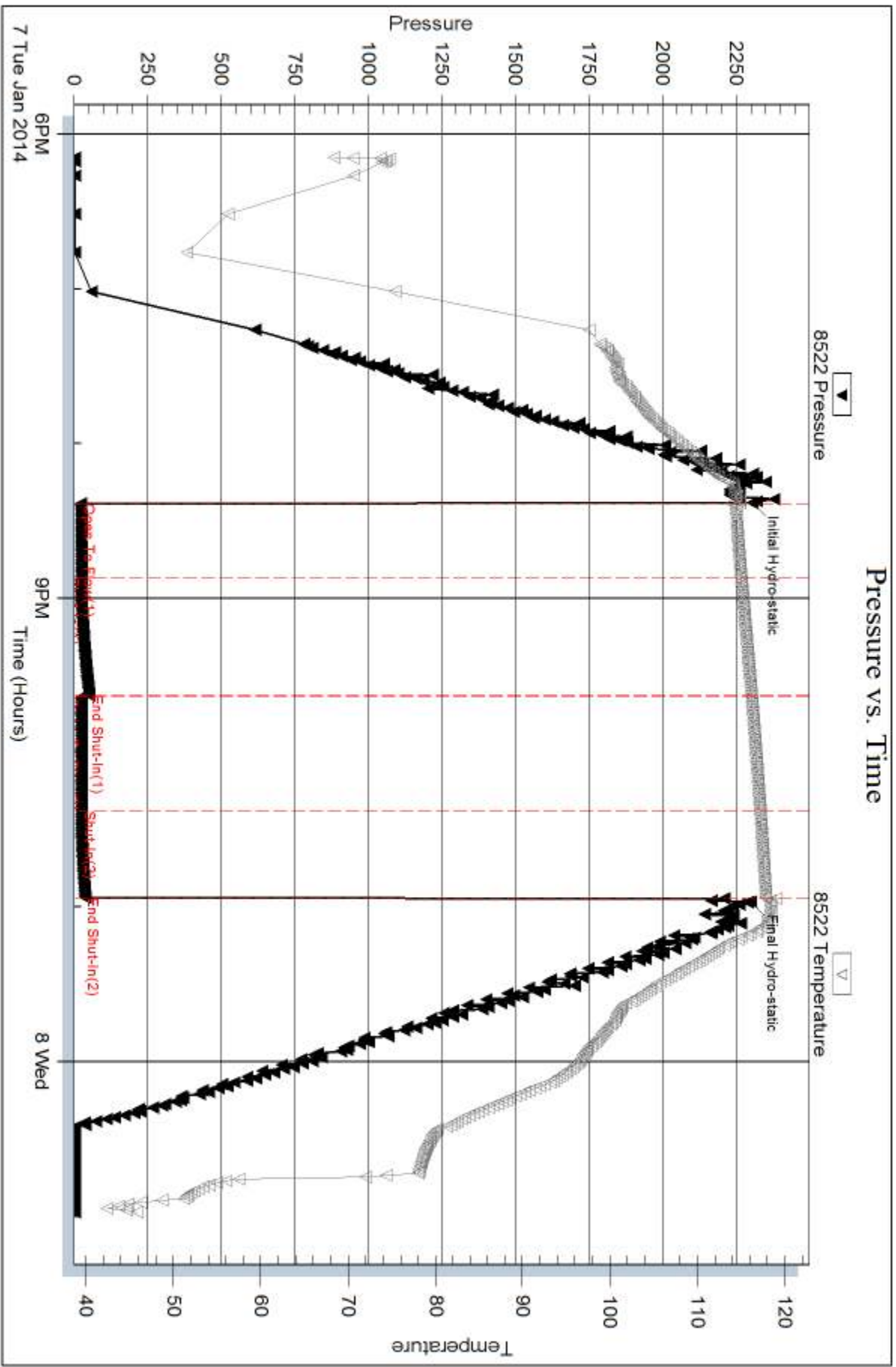
Num Gas Bombs: 0

Serial #:

Laboratory Name:

Laboratory Location:

Recovery Comments:



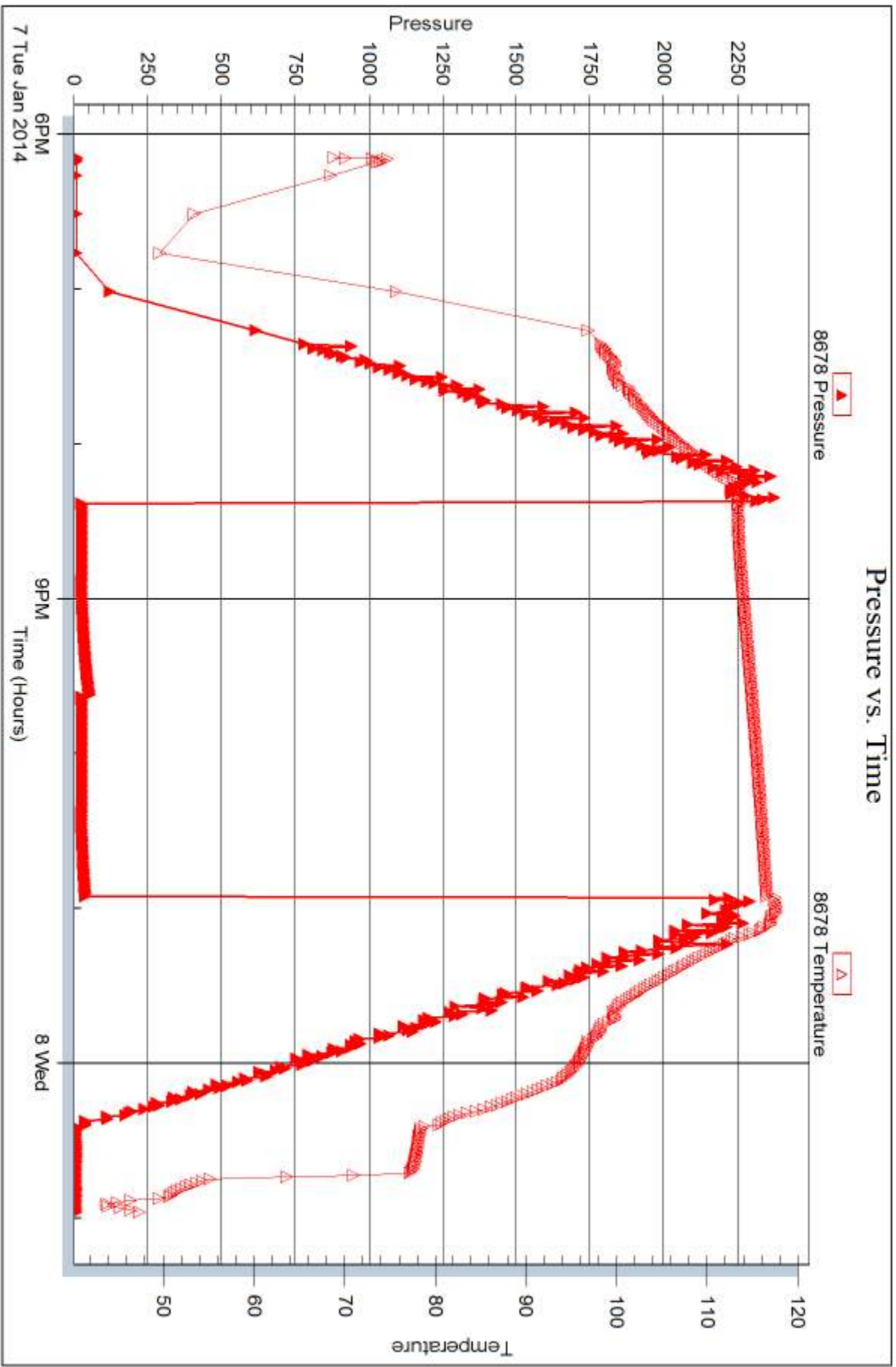
Serial #: 8678

Inside

Landmark Resources, Inc

Sleeping Indian 1-12

DST Test Number: 3





DRILL STEM TEST REPORT

Prepared For: **Landmark Resources, Inc**

1616 Voss Rd STE 600
Houston, TX 77057

ATTN: Max Lovely

Sleeping Indian 1-12

12 17s 34w Scott,KS

Start Date: 2014.01.08 @ 15:21:00

End Date: 2014.01.08 @ 22:21:30

Job Ticket #: 55682 DST #: 4

Trilobite Testing, Inc
PO Box 362 Hays, KS 67601
ph: 785-625-4778 fax: 785-625-5620

Printed: 2014.01.10 @ 14:51:13



**TRILOBITE
TESTING, INC**

DRILL STEM TEST REPORT

Landmark Resources, Inc

12 17s 34w Scott,KS

1616 Voss Rd STE 600
Houston, TX 77057

Sleeping Indian 1-12

ATTN: Max Lovely

Job Ticket: 55682

DST#: 4

Test Start: 2014.01.08 @ 15:21:00

GENERAL INFORMATION:

Formation: **Johnson**

Deviated: No Whipstock: ft (KB)

Time Tool Opened: 17:32:45

Time Test Ended: 22:21:30

Test Type: Conventional Bottom Hole (Reset)

Tester: Bradley Walter

Unit No: 69

Interval: 4632.00 ft (KB) To 4735.00 ft (KB) (TVD)

Reference Elevations: 3104.00 ft (KB)

Total Depth: 4735.00 ft (KB) (TVD)

3092.00 ft (CF)

Hole Diameter: 7.88 inches Hole Condition: Good

KB to GR/CF: 12.00 ft

Serial #: 8522 Outside

Press@RunDepth: 34.07 psig @ 4633.00 ft (KB)

Capacity: 8000.00 psig

Start Date: 2014.01.08

End Date:

2014.01.08

Last Calib.:

2014.01.08

Start Time: 15:21:05

End Time:

22:21:29

Time On Btm:

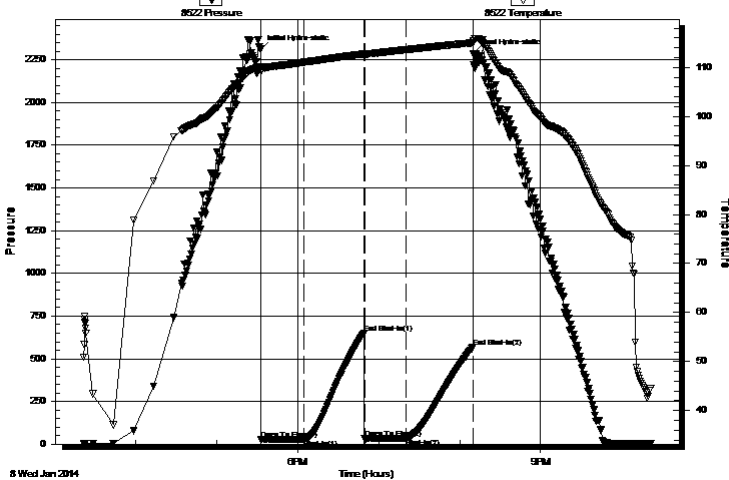
2014.01.08 @ 17:32:30

Time Off Btm:

2014.01.08 @ 20:10:00

TEST COMMENT: IF: 3/4" blow .
IS: No return.
FF: No blow .
FS: No return

Pressure vs. Time



PRESSURE SUMMARY

Time (Min.)	Pressure (psig)	Temp (deg F)	Annotation
0	2311.58	110.09	Initial Hydro-static
1	25.90	109.23	Open To Flow (1)
32	29.31	111.06	Shut-In(1)
77	648.32	112.75	End Shut-In(1)
77	31.26	112.61	Open To Flow (2)
108	34.07	113.61	Shut-In(2)
157	566.66	115.02	End Shut-In(2)
158	2286.21	115.51	Final Hydro-static

Recovery

Length (ft)	Description	Volume (bbl)
10.00	Mud 100m (oil spots)	0.05

Gas Rates

	Choke (inches)	Pressure (psig)	Gas Rate (Mcf/d)

* Recovery from multiple tests



**TRILOBITE
TESTING, INC**

DRILL STEM TEST REPORT

TOOL DIAGRAM

Landmark Resources, Inc

12 17s 34w Scott,KS

1616 Voss Rd STE 600
Houston, TX 77057

Sleeping Indian 1-12

Job Ticket: 55682

DST#: 4

ATTN: Max Lovely

Test Start: 2014.01.08 @ 15:21:00

Tool Information

Drill Pipe:	Length: 4337.00 ft	Diameter: 3.20 inches	Volume: 43.14 bbl	Tool Weight: 2500.00 lb
Heavy Wt. Pipe:	Length: 0.00 ft	Diameter: 0.00 inches	Volume: 0.00 bbl	Weight set on Packer: 25000.00 lb
Drill Collar:	Length: 275.00 ft	Diameter: 2.35 inches	Volume: 1.48 bbl	Weight to Pull Loose: 90000.00 lb
			<u>Total Volume: 44.62 bbl</u>	Tool Chased 0.00 ft
Drill Pipe Above KB:	7.00 ft			String Weight: Initial 78000.00 lb
Depth to Top Packer:	4632.00 ft			Final 78000.00 lb
Depth to Bottom Packer:	ft			
Interval between Packers:	103.00 ft			
Tool Length:	130.00 ft			
Number of Packers:	2	Diameter: 6.75 inches		

Tool Comments:

Tool Description

Length (ft) Serial No. Position Depth (ft) Accum. Lengths

Tool Description	Length (ft)	Serial No.	Position	Depth (ft)	Accum. Lengths
Change Over Sub	1.00			4606.00	
Shut In Tool	5.00			4611.00	
Hydraulic tool	5.00			4616.00	
Jars	5.00			4621.00	
Safety Joint	2.00			4623.00	
Packer	5.00			4628.00	27.00 Bottom Of Top Packer
Packer	4.00			4632.00	
Stubb	1.00			4633.00	
Recorder	0.00	8678	Inside	4633.00	
Recorder	0.00	8522	Outside	4633.00	
Perforations	3.00			4636.00	
Change Over Sub	1.00			4637.00	
Drill Pipe	94.00			4731.00	
Change Over Sub	1.00			4732.00	
Bullnose	3.00			4735.00	103.00 Bottom Packers & Anchor

Total Tool Length: 130.00



**TRILOBITE
TESTING, INC**

DRILL STEM TEST REPORT

FLUID SUMMARY

Landmark Resources, Inc

12 17s 34w Scott,KS

1616 Voss Rd STE 600
Houston, TX 77057

Sleeping Indian 1-12

Job Ticket: 55682

DST#: 4

ATTN: Max Lovely

Test Start: 2014.01.08 @ 15:21:00

Mud and Cushion Information

Mud Type: Gel Chem

Cushion Type:

Oil API:

0 deg API

Mud Weight: 10.00 lb/gal

Cushion Length:

ft

Water Salinity:

0 ppm

Viscosity: 52.00 sec/qt

Cushion Volume:

bbbl

Water Loss: 9.58 in³

Gas Cushion Type:

Resistivity: ohm.m

Gas Cushion Pressure:

psig

Salinity: 8900.00 ppm

Filter Cake: 1.00 inches

Recovery Information

Recovery Table

Length ft	Description	Volume bbl
10.00	Mud 100m (oil spots)	0.054

Total Length: 10.00 ft Total Volume: 0.054 bbl

Num Fluid Samples: 0

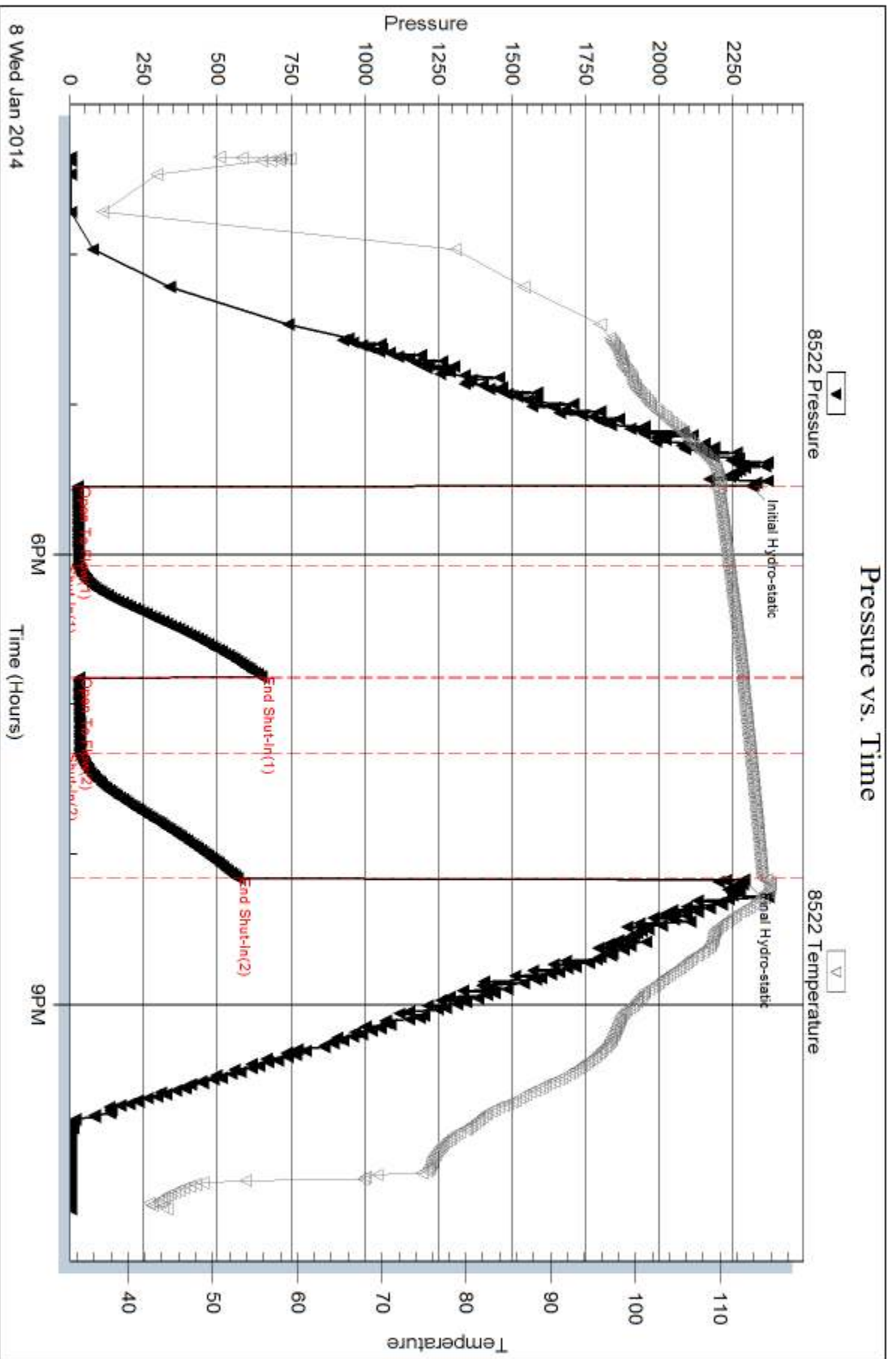
Num Gas Bombs: 0

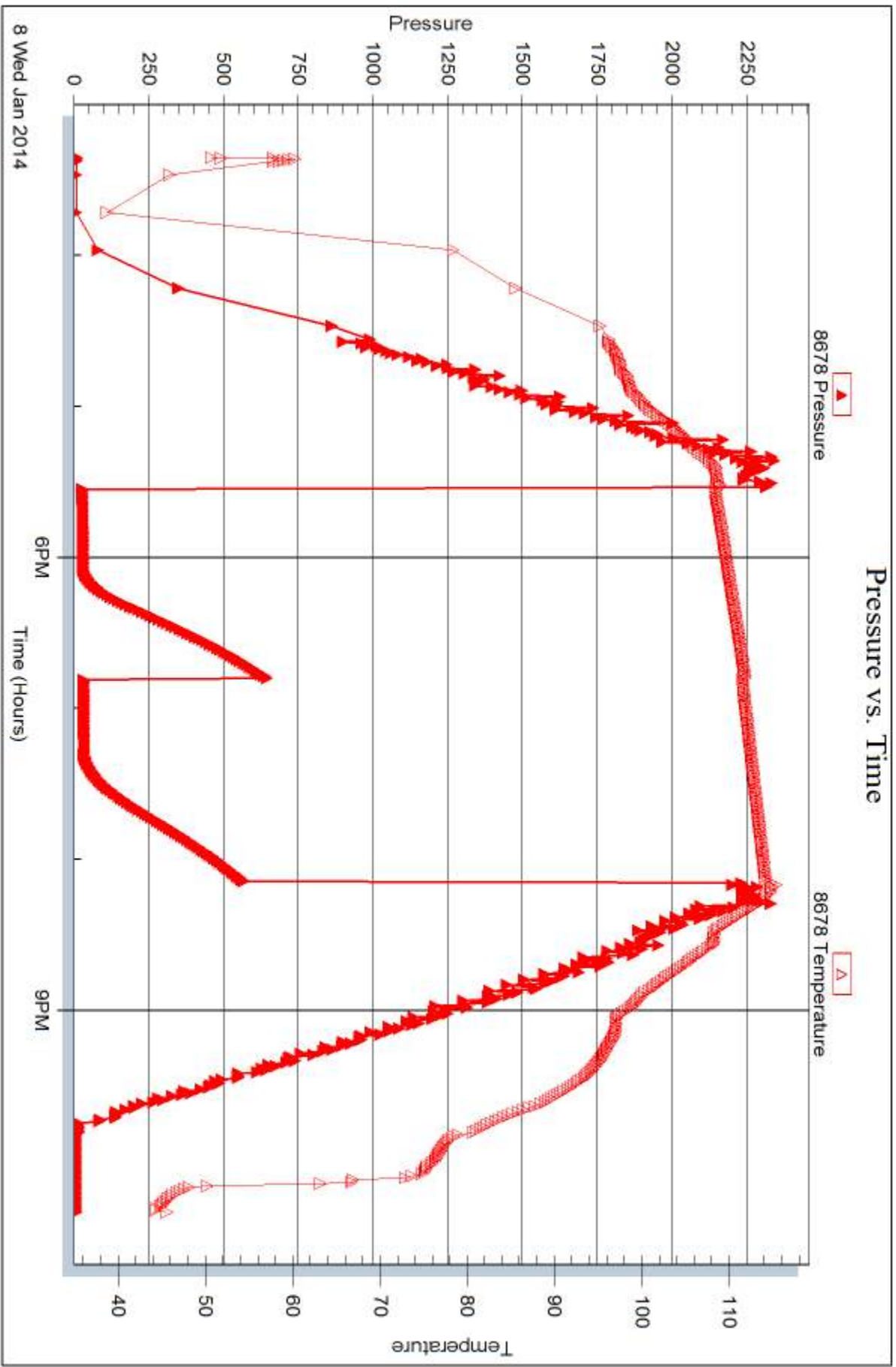
Serial #:

Laboratory Name:

Laboratory Location:

Recovery Comments:







DRILL STEM TEST REPORT

Prepared For: **Landmark Resources, Inc**

1616 Voss Rd STE 600
Houston, TX 77057

ATTN: Max Lovely

Sleeping Indian 1-12

12 17s 34w Scott,KS

Start Date: 2014.01.10 @ 00:52:00

End Date: 2014.01.10 @ 09:06:30

Job Ticket #: 55683 DST #: 5

Trilobite Testing, Inc

PO Box 362 Hays, KS 67601

ph: 785-625-4778 fax: 785-625-5620

Printed: 2014.01.10 @ 14:50:33



TRILOBITE TESTING, INC

DRILL STEM TEST REPORT

Landmark Resources, Inc

12 17s 34w Scott,KS

1616 Voss Rd STE 600
Houston, TX 77057

Sleeping Indian 1-12

ATTN: Max Lovely

Job Ticket: 55683

DST#: 5

Test Start: 2014.01.10 @ 00:52:00

GENERAL INFORMATION:

Formation: **Altamont**

Deviated: No Whipstock: ft (KB)

Time Tool Opened: 03:18:15

Time Test Ended: 09:06:30

Test Type: Conventional Bottom Hole (Reset)

Tester: Bradley Walter

Unit No: 69

Interval: 4473.00 ft (KB) To 4494.00 ft (KB) (TVD)

Reference Elevations: 3104.00 ft (KB)

Total Depth: 4904.00 ft (KB) (TVD)

3092.00 ft (CF)

Hole Diameter: 7.88 inches Hole Condition: Good

KB to GR/CF: 12.00 ft

Serial #: 8522 Inside

Press@RunDepth: 49.84 psig @ 4474.00 ft (KB)

Capacity: 8000.00 psig

Start Date: 2014.01.10

End Date: 2014.01.10

Last Calib.: 2014.01.10

Start Time: 00:52:05

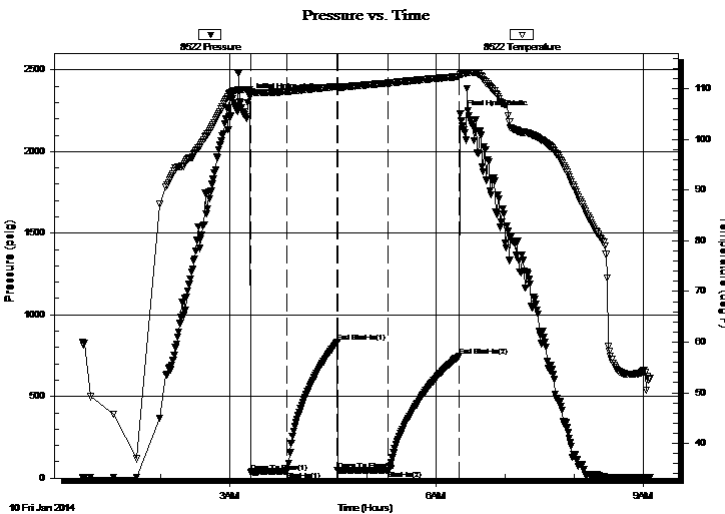
End Time: 09:06:29

Time On Btm: 2014.01.10 @ 03:17:45

Time Off Btm: 2014.01.10 @ 06:20:45

TEST COMMENT: IF: 1 1/2" blow .
IS: No return.
FF: No blow .
FS: No return

PRESSURE SUMMARY



Time (Min.)	Pressure (psig)	Temp (deg F)	Annotation
0	2333.30	109.91	Initial Hydro-static
1	36.29	109.26	Open To Flow (1)
33	42.96	109.48	Shut-In(1)
76	834.35	110.48	End Shut-In(1)
77	45.72	110.10	Open To Flow (2)
120	49.84	111.12	Shut-In(2)
183	750.11	112.43	End Shut-In(2)
183	2228.54	112.87	Final Hydro-static

Recovery

Length (ft)	Description	Volume (bbl)
30.00	mud 100m (oil spots)	0.16

* Recovery from multiple tests

Gas Rates

Choke (inches)	Pressure (psig)	Gas Rate (Mcf/d)



**TRILOBITE
TESTING, INC**

DRILL STEM TEST REPORT

TOOL DIAGRAM

Landmark Resources, Inc

12 17s 34w Scott,KS

1616 Voss Rd STE 600
Houston, TX 77057

Sleeping Indian 1-12

Job Ticket: 55683

DST#: 5

ATTN: Max Lovely

Test Start: 2014.01.10 @ 00:52:00

Tool Information

Drill Pipe:	Length: 4201.00 ft	Diameter: 3.20 inches	Volume: 41.79 bbl	Tool Weight:	2500.00 lb
Heavy Wt. Pipe:	Length: 0.00 ft	Diameter: 0.00 inches	Volume: 0.00 bbl	Weight set on Packer:	25000.00 lb
Drill Collar:	Length: 275.00 ft	Diameter: 2.35 inches	Volume: 1.48 bbl	Weight to Pull Loose:	90000.00 lb
			<u>Total Volume: 43.27 bbl</u>	Tool Chased	0.00 ft
Drill Pipe Above KB:	30.00 ft			String Weight: Initial	78000.00 lb
Depth to Top Packer:	4473.00 ft			Final	78000.00 lb
Depth to Bottom Packer:	ft				
Interval between Packers:	432.00 ft				
Tool Length:	459.00 ft				
Number of Packers:	2	Diameter: 6.75 inches			

Tool Comments:

Tool Description

Length (ft) Serial No. Position Depth (ft) Accum. Lengths

Change Over Sub	1.00			4447.00	
Shut In Tool	5.00			4452.00	
Hydraulic tool	5.00			4457.00	
Jars	5.00			4462.00	
Safety Joint	2.00			4464.00	
Packer	5.00			4469.00	27.00 Bottom Of Top Packer
Packer	4.00			4473.00	
Stubb	1.00			4474.00	
Recorder	0.00	8522	Inside	4474.00	
Recorder	0.00	8678	Outside	4474.00	
Perforations	16.00			4490.00	
Blank Off Sub	1.00			4491.00	432.00 Tool Interval
Packer	3.00			4494.00	
Blank Spacing	1.00			4495.00	
Perforations	23.00			4518.00	
Change Over Sub	1.00			4519.00	
Recorder	0.00	8677	Below	4519.00	
Drill Pipe	382.00			4901.00	
Change Over Sub	1.00			4902.00	
Bullnose	3.00			4905.00	1000458.00 Bottom Packers & Anchor

Total Tool Length: 459.00



**TRILOBITE
TESTING, INC**

DRILL STEM TEST REPORT

FLUID SUMMARY

Landmark Resources, Inc

12 17s 34w Scott,KS

1616 Voss Rd STE 600
Houston, TX 77057

Sleeping Indian 1-12

Job Ticket: 55683

DST#: 5

ATTN: Max Lovely

Test Start: 2014.01.10 @ 00:52:00

Mud and Cushion Information

Mud Type: Gel Chem

Cushion Type:

Oil API:

0 deg API

Mud Weight: 10.00 lb/gal

Cushion Length:

ft

Water Salinity:

0 ppm

Viscosity: 57.00 sec/qt

Cushion Volume:

bbbl

Water Loss: 8.79 in³

Gas Cushion Type:

Resistivity: ohm.m

Gas Cushion Pressure:

psig

Salinity: 5000.00 ppm

Filter Cake: 1.00 inches

Recovery Information

Recovery Table

Length ft	Description	Volume bbl
30.00	mud 100m (oil spots)	0.161

Total Length: 30.00 ft Total Volume: 0.161 bbl

Num Fluid Samples: 0

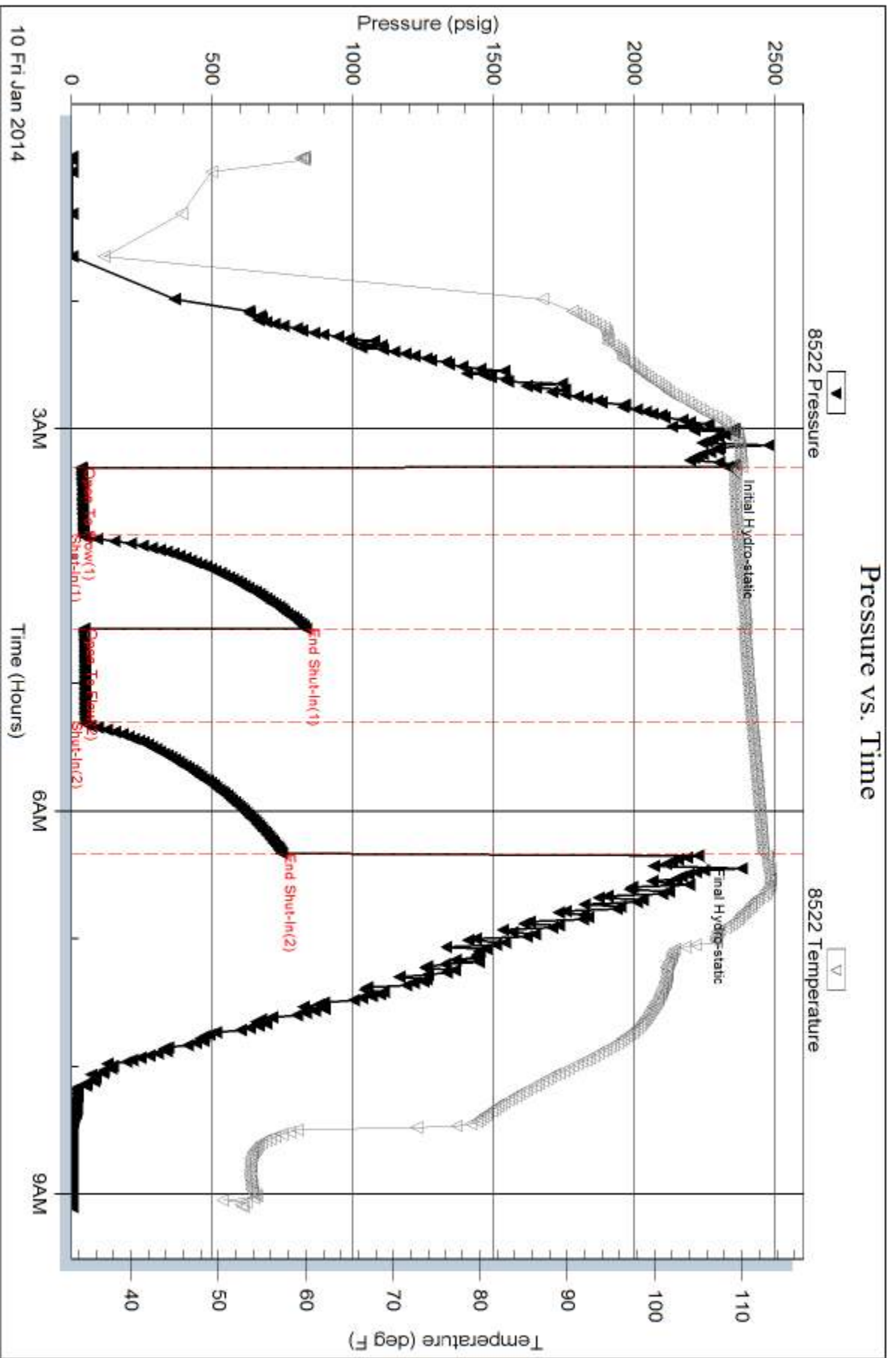
Num Gas Bombs: 0

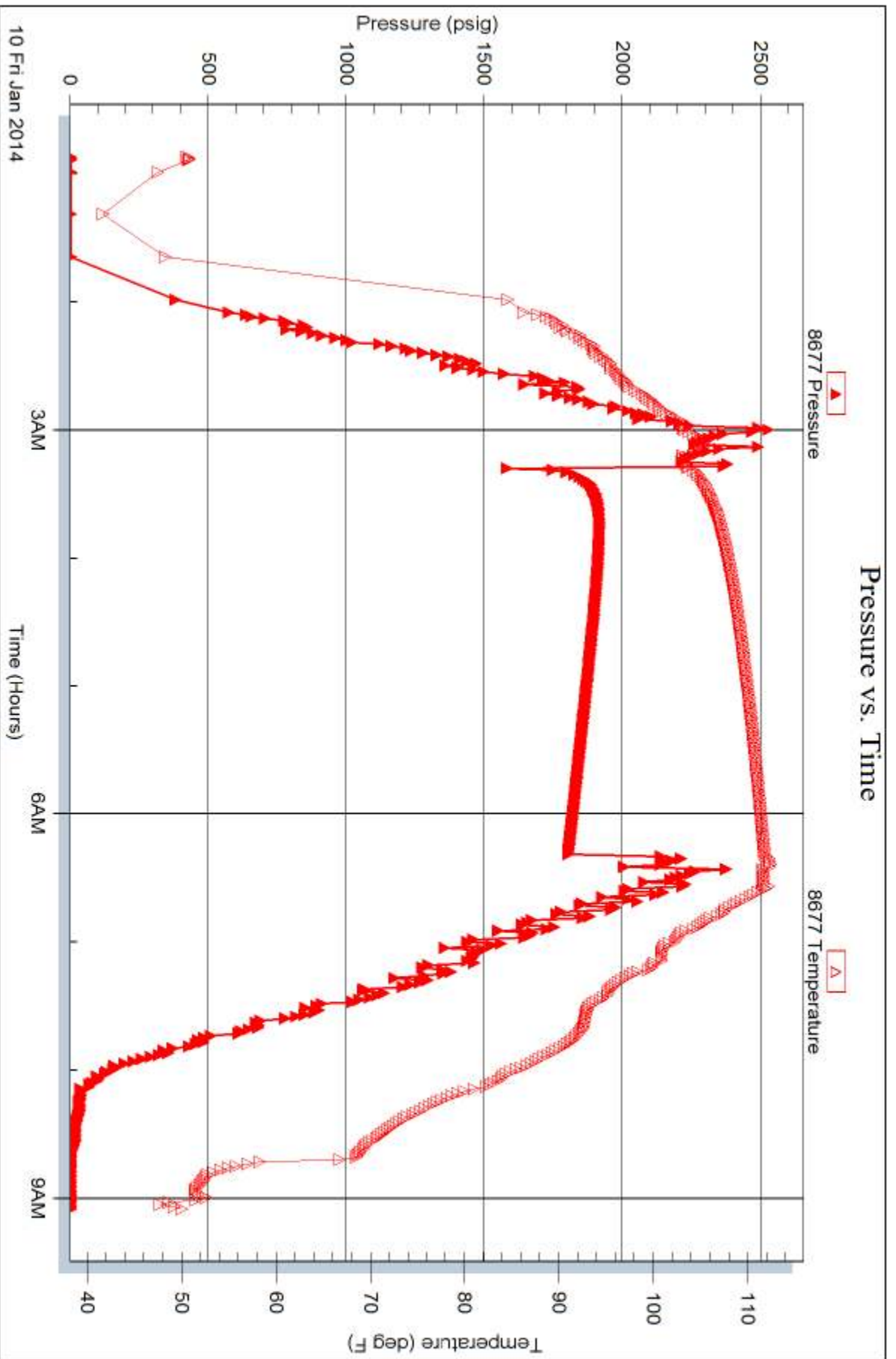
Serial #:

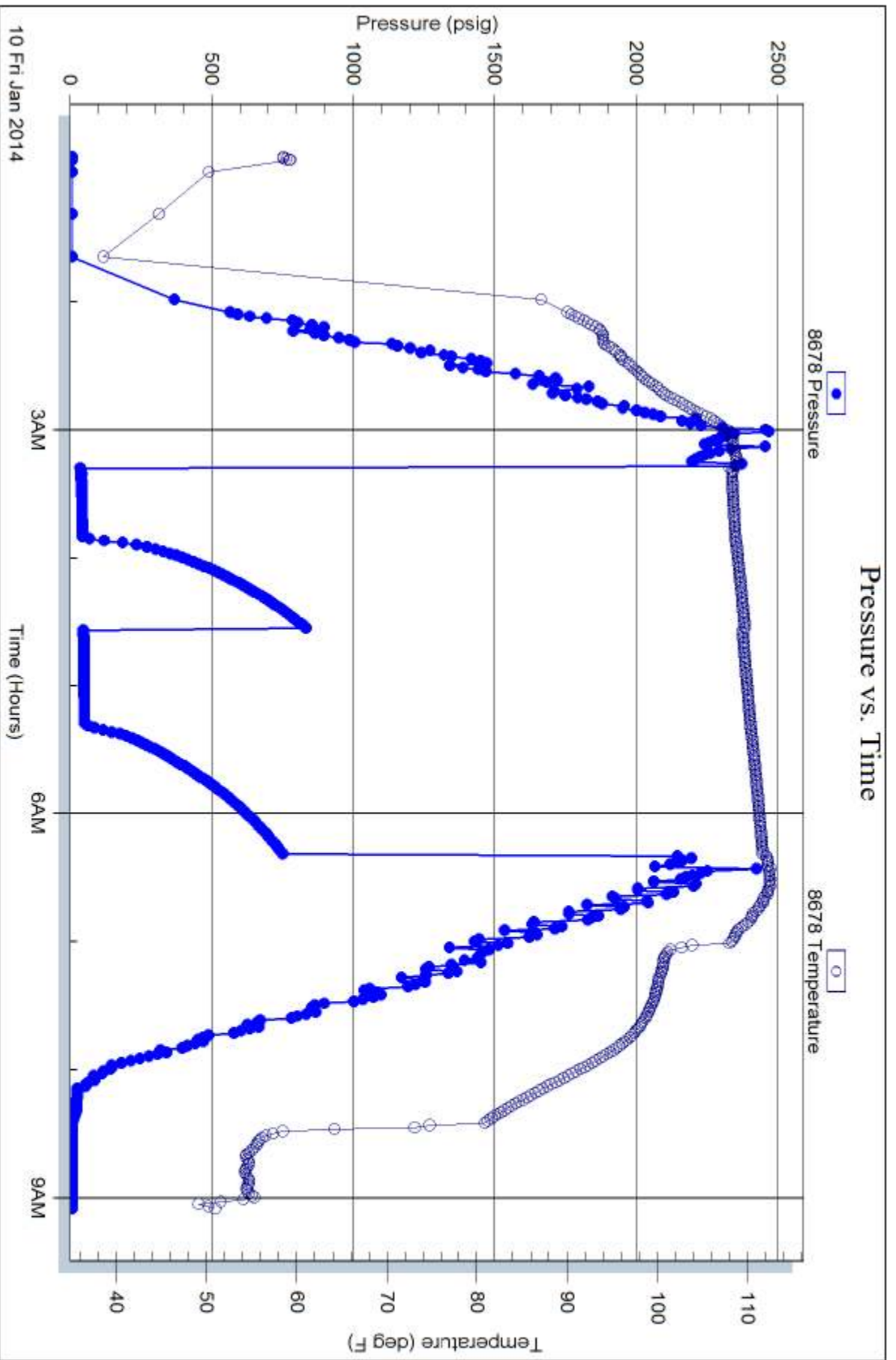
Laboratory Name:

Laboratory Location:

Recovery Comments:









TRILOBITE TESTING INC.

1515 Commerce Parkway • Hays, Kansas 67601

Test Ticket

NO. **55679**

Well Name & No. Sleeping Indian 1-12 Test No. 1 Date 1/05/14
 Company Landmark Resources, Inc Elevation 3104 KB 3092 GL
 Address 1616 Voss Rd STE 600 Houston, Tx 77057
 Co. Rep / Geo. Max Lovely Rig Martin 21
 Location: Sec. 12 Twp. 17S Rge. 34W Co. Scott State Ks

Interval Tested 4093 4157 Zone Tested LKC - D, E & F
 Anchor Length 64' Drill Pipe Run 3813 Mud Wt. 9.5
 Top Packer Depth 4087 Drill Collars Run 275 Vis 57
 Bottom Packer Depth 4093 Wt. Pipe Run 0 WL 9.8
 Total Depth 4157 Chlorides 5200 ppm System LCM 2#

Blow Description IF: BOB @ 3 min
ISI: No return
FF: BOB @ 5 min
FSI: No return.

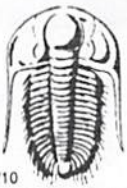
Rec	Feet of	%gas	%oil	%water	%mud
<u>1290</u>	<u>mcw</u>		<u>90</u>	<u>10</u>	
	<u>oil spots in tool</u>				

Rec Total 1290 BHT 118 Gravity - API RW 1208 @ 49 °F Chlorides 52000 ppm

(A) Initial Hydrostatic <u>2102</u>	<input checked="" type="checkbox"/> Test <u>1250</u>	T-On Location <u>0400</u>
(B) First Initial Flow <u>95</u>	<input checked="" type="checkbox"/> Jars <u>250</u>	T-Started <u>0517</u>
(C) First Final Flow <u>417</u>	<input checked="" type="checkbox"/> Safety Joint <u>75</u>	T-Open <u>0752</u>
(D) Initial Shut-In <u>1114</u>	<input checked="" type="checkbox"/> Circ Sub <u>1/2</u>	T-Pulled <u>1052</u>
(E) Second Initial Flow <u>431</u>	<input type="checkbox"/> Hourly Standby	T-Out <u>1312</u>
(F) Second Final Flow <u>629</u>	<input checked="" type="checkbox"/> Mileage <u>51.15</u>	Comments
(G) Final Shut-In <u>1107</u>	<input type="checkbox"/> Sampler	
(H) Final Hydrostatic <u>1991</u>	<input type="checkbox"/> Straddle	
	<input type="checkbox"/> Shale Packer	<input type="checkbox"/> Ruined Shale Packer
	<input type="checkbox"/> Extra Packer	<input type="checkbox"/> Ruined Packer
	<input type="checkbox"/> Extra Recorder	<input type="checkbox"/> Extra Copies
Initial Open <u>30</u>	<input type="checkbox"/> Day Standby	Sub Total <u>0</u>
Initial Shut-In <u>45</u>	<input type="checkbox"/> Accessibility	Total <u>1626.15</u>
Final Flow <u>30</u>	Sub Total <u>1626.15</u>	MP/DST Disc't
Final Shut-In <u>45</u>		

Approved By _____ Our Representative [Signature]

TriLOBITE TESTING INC. shall not be liable for damaged of any kind of the property or personnel of the one for whom a test is made, or for any loss suffered or sustained, directly or indirectly, through the use of its equipment, or its statements or opinion concerning the results of any test, tools lost or damaged in the hole shall be paid for at cost by the party for whom the test is made.



TRILOBITE TESTING INC.

1515 Commerce Parkway • Hays, Kansas 67601

Test Ticket

NO. 55680

Well Name & No. Sleeping Indian 1-12 Test No. 2 Date 1/06/14
 Company Landmark Resources INC Elevation 3104 KB 3092 GL
 Address 1616 Voss Rd STE 600 Houston, Tx 77057
 Co. Rep / Geo. Max Lovely Rig Martin 21
 Location: Sec. 12 Twp. 17s Rge. 34w Co. Scott State Ks

Interval Tested 4417 - 4485 Zone Tested Marmaton
 Anchor Length 38' Drill Pipe Run 4149 Mud Wt. 9.4
 Top Packer Depth 4412 Drill Collars Run 275 Vis 52
 Bottom Packer Depth 4417 Wt. Pipe Run 0 WL 8.0
 Total Depth 4485 Chlorides 5,000 ppm System LCM 2.4

Blow Description IF: BOB @ 13 min
ISI: No return
FF:
FSI: No return.

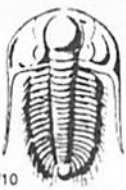
Rec	Feet of	%gas	%oil	%water	%mud
<u>720</u>	<u>MCW</u>		<u>90</u>	<u>10</u>	
Rec	Feet of	%gas	%oil	%water	%mud
Rec	Feet of	%gas	%oil	%water	%mud
Rec	Feet of	%gas	%oil	%water	%mud
Rec	Feet of	%gas	%oil	%water	%mud

Rec Total 720 BHT 123 Gravity — API RW 244 @ 44° F Chlorides 50,000 ppm

(A) Initial Hydrostatic 2278 Test 1250 T-On Location 1600
 (B) First Initial Flow 32 Jars 250 T-Started 1657
 (C) First Final Flow 208 Safety Joint 75 T-Open 1918
 (D) Initial Shut-In 1212 Circ Sub NK T-Pulled 2248
 (E) Second Initial Flow 214 Hourly Standby _____ T-Out 0116
 (F) Second Final Flow 342 Mileage 93 AT 51.15 Comments _____
 (G) Final Shut-In 1134 Sampler _____
 (H) Final Hydrostatic 2182 Straddle _____ Ruined Shale Packer 350
 Shale Packer 250 Ruined Packer _____
 Initial Open 30 Extra Packer _____ Extra Copies _____
 Initial Shut-In 45 Extra Recorder _____ Sub Total 0
 Final Flow 45 Day Standby _____ Total 2226.15
 Final Shut-In 60 Accessibility _____ MP/DST Disc't _____
 Sub Total 1876.15

Approved By _____ Our Representative [Signature]

Trilobite Testing Inc. shall not be liable for damaged of any kind of the property or personnel of the one for whom a test is made, or for any loss suffered or sustained, directly or indirectly, through the use of its equipment, or its statements or opinion concerning the results of any test, tools lost or damaged in the hole shall be paid for at cost by the party for whom the test is made.



TRILOBITE TESTING INC.

1515 Commerce Parkway • Hays, Kansas 67601

Test Ticket

NO. **55681**

Well Name & No. Sleeping Indian 1-12 Test No. 3 Date 1-08-14
 Company Landmark Resources, Inc Elevation 3104 KB 3077 GL
 Address 1616 Voss Rd STE 600 Houston, Tx 77057
 Co. Rep / Geo. Max Lovely Rig Mudlin 21
 Location: Sec. 12 Twp. 17S Rge. 34W Co. Scott State Ks

Interval Tested 4566 - 4610 Zone Tested Myrie Station, Ft. Scott
 Anchor Length 44 Drill Pipe Run 4271 Mud Wt. 9.4
 Top Packer Depth 4561 Drill Collars Run 275 Vis 94
 Bottom Packer Depth 4566 Wt. Pipe Run 0 WL 8.0
 Total Depth 4610 Chlorides 5,000 ppm System LCM 2⁺

Blow Description IF: surface blow, died @ 5 min.
ISI: No return.
FF: No blow
FST: No return.

Rec	Feet of	%gas	%oil	%water	%mud
<u>3</u>	<u>MUD</u>			<u>100</u>	

Rec Total 3 BHT 118 Gravity API RW @ °F Chlorides ppm

(A) Initial Hydrostatic 2304 Test 1250 T-On Location 1700
 (B) First Initial Flow 24 Jars 250 T-Started 1809
 (C) First Final Flow 26 Safety Joint 75 T-Open 2022
 (D) Initial Shut-In 53 Circ Sub XC T-Pulled 2252
 (E) Second Initial Flow 25 Hourly Standby T-Out 0058
 (F) Second Final Flow 26 Mileage 33 RT 51.15
 (G) Final Shut-In 39 Sampler
 (H) Final Hydrostatic 2300 Straddle
 Shale Packer
 Extra Packer
 Extra Recorder
 Day Standby
 Accessibility

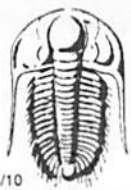
Initial Open 30
 Initial Shut-In 45
 Final Flow 45
 Final Shut-In 30

Sub Total 1626.15

MP/DST Disc't

Approved By Our Representative

TriLOBITE TESTING INC. shall not be liable for damaged of any kind of the property or personnel of the one for whom a test is made, or for any loss suffered or sustained, directly or indirectly, through the use of its equipment, or its statements or opinion concerning the results of any test, tools lost or damaged in the hole shall be paid for at cost by the party for whom the test is made.



TRILOBITE TESTING INC.

1515 Commerce Parkway • Hays, Kansas 67601

Test Ticket

NO. 55682

Well Name & No. Sleeping Indian 1-12 Test No. 4 Date 1-8-14
 Company Landmark Resources, Inc Elevation 3104 KB 3092 GL
 Address 1616 Voss Rd Ste 600 Houston, Tx 77057
 Co. Rep / Geo. Max Lovely Rig Martin 21
 Location: Sec. 12 Twp. 17s Rge. 34w Co. Scott State Ks

Interval Tested 4632 4735 Zone Tested Johnson
 Anchor Length 103 Drill Pipe Run 4337 Mud Wt. 9.5
 Top Packer Depth 4627 Drill Collars Run 275 Vis 52
 Bottom Packer Depth 4632 Wt. Pipe Run 0 WL 0.6
 Total Depth 4735 Chlorides 8900 ppm System LCM 2#

Blow Description IF: 3/4" blow
FSI: No return
FF: No blow
FSI: No return

Rec	Feet of	%gas	%oil	%water	%mud
<u>10</u>	<u>MUD</u>			<u>100</u>	
	<u>oil spots</u>				

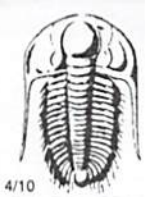
Rec Total 10 BHT 115 Gravity — API RW — @ — °F Chlorides — ppm

(A) Initial Hydrostatic 2312 Test 1250 T-On Location 1500
 (B) First Initial Flow 26 Jars 250 T-Started 1521
 (C) First Final Flow 29 Safety Joint 75 T-Open 1733
 (D) Initial Shut-In 648 Circ Sub N/C T-Pulled 2003
 (E) Second Initial Flow 31 Hourly Standby _____ T-Out 2222
 (F) Second Final Flow 34 Mileage 3324 51.15 Comments _____
 (G) Final Shut-In 567 Sampler _____
 (H) Final Hydrostatic 2286 Straddle _____
 Shale Packer _____
 Ruined Shale Packer _____
 Ruined Packer _____
 Extra Packer _____
 Extra Copies _____

Initial Open 30 Extra Recorder _____ Sub Total 0
 Initial Shut-In 45 Day Standby _____ Total 1626.15
 Final Flow 30 Accessibility _____ MP/DST Disc't _____
 Final Shut-In 45 Sub Total 1626.15

Approved By _____ Our Representative [Signature]

TriLOBITE Testing Inc. shall not be liable for damaged of any kind of the property or personnel of the one for whom a test is made, or for any loss suffered or sustained, directly or indirectly, through the use of its equipment, or its statements or opinion concerning the results of any test, tools lost or damaged in the hole shall be paid for at cost by the party for whom the test is made.



TRILOBITE TESTING INC.

1515 Commerce Parkway • Hays, Kansas 67601

Test Ticket

NO. **55683**

Well Name & No. Sleeping Indian 1-12 Test No. 5 Date 1/10/14
 Company Landmark Resources, Inc Elevation 3104 KB 3092 GL
 Address 1416 Voss Rd Ste 600 Houston, Tx 77057
 Co. Rep / Geo. Max Lorely Rig MvAm 21
 Location: Sec. 12 Twp. 17S Rge. 34W Co. Scott State Ks

Interval Tested 4473 - 4494 Zone Tested Atamont
 Anchor Length 21' Drill Pipe Run 4201 Mud Wt. 9.7
 Top Packer Depth 4467 Drill Collars Run 275 Vis 54
 Bottom Packer Depth 4473 - 4494 (STRAT) Wt. Pipe Run 0 WL 8.0
 Total Depth 4904 Chlorides 5,000 ppm System LCM 2#

Blow Description IF: 1 1/2" blow
ISI: No return.
FF: No blow
FSS: No return.

Rec	Feet of	%gas	%oil	%water	%mud
<u>30</u>	<u>MUD 100m</u>				
Rec	Feet of	%gas	%oil	%water	%mud
Rec	Feet of	%gas	%oil	%water	%mud
Rec	Feet of	%gas	%oil	%water	%mud
Rec	Feet of	%gas	%oil	%water	%mud

Rec Total 30 BHT 112 Gravity — API RW — @ — °F Chlorides — ppm

(A) Initial Hydrostatic 2233 Test 1250 T-On Location 2320
 (B) First Initial Flow 36 Jars 250 T-Started 0052
 (C) First Final Flow 43 Safety Joint 75 T-Open 0317
 (D) Initial Shut-In 834 Circ Sub N/C T-Pulled 0617
 (E) Second Initial Flow 46 Hourly Standby _____ T-Out 0906
 (F) Second Final Flow 50 Mileage 33 RT 51.15
 (G) Final Shut-In 750 Sampler _____
 (H) Final Hydrostatic 2229 Straddle 600 Ruined Shale Packer _____

Shale Packer _____ Ruined Packer _____
 Extra Packer _____ Extra Copies _____
 Initial Open 30 Extra Recorder _____ Sub Total 0
 Initial Shut-In 45 Day Standby _____ Total 2226.15
 Final Flow 45 Accessibility _____ MP/DST Disc't _____
 Final Shut-In 60 Sub Total 2226.15

Approved By _____ Our Representative [Signature]

Trilobite Testing Inc. shall not be liable for damaged of any kind of the property or personnel of the one for whom a test is made, or for any loss suffered or sustained, directly or indirectly, through the use of its equipment, or its statements or opinion concerning the results of any test, tools lost or damaged in the hole shall be paid for at cost by the party for whom the test is made.