



Musgrove

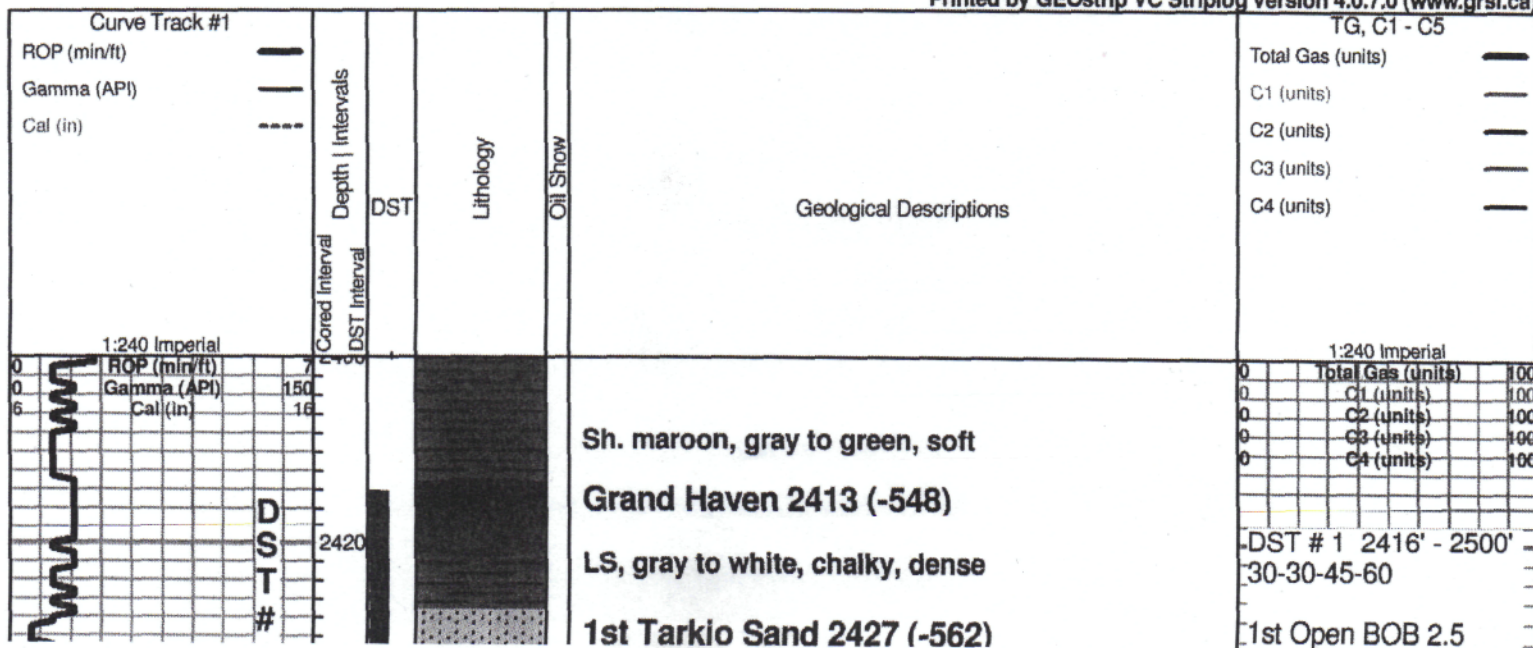
PETROLEUM CORPORATION
Clifton, Kansas

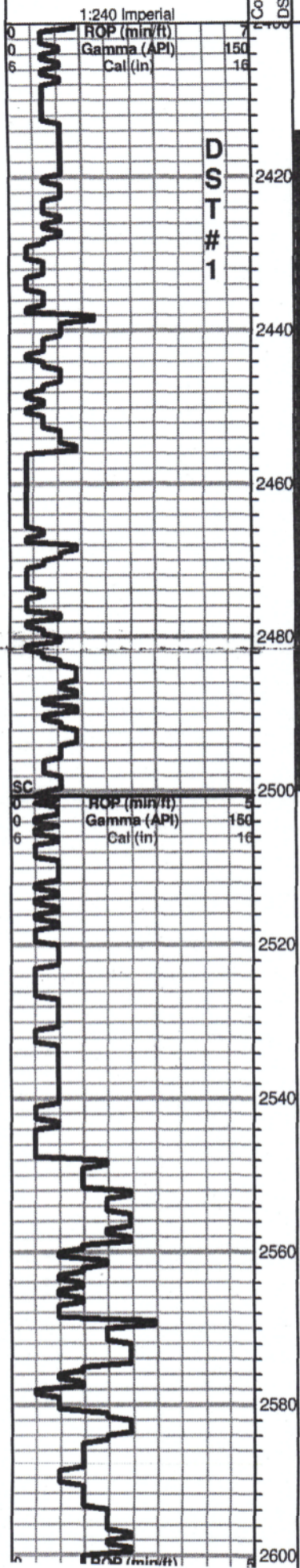
NOTES

Company: Mai Oil Operations, Inc.
 Lease: Flegler "C" #4
 Field: Trapp
 Location: E2-SW-SW-SE (330' FSL & 2000' FEL)
 Sec: 11 Twsp: 15S Rge: 14W
 County: Russell State: Kansas
 KB: 1865' GL: 1857'
 API #: 15-167-23914-00-00
 Contractor: Southwind Drilling Inc. (Rig #3)
 Spud: 11/12/2013 Comp: 11/19/2013
 RTD: 3381' LTD: 3382'
 Mud Up: 2300' Type Mud: Chemical
 Samples Saved From: 2400' to RTD
 Drilling Time Kept From: 2400' to RTD
 Samples Examined From: 2400' to RTD
 Geological Supervision from: 2400' to RTD
 Geologist on Well: Kurt Talbott & Wyatt Urban
 Surface Casing: 8 5/8@ 500'

* Gas

Printed by GEOstrip VC Striplog version 4.0.7.0 (www.grsi.ca)





Sh. maroon, gray to green, soft
Grand Haven 2413 (-548)

LS, gray to white, chalky, dense

1st Tarkio Sand 2427 (-562)

Sd, gray, v. fine grain, shaley, in parts, few mica, trace brown stain, trace free oil, vis gas bubbles
Dover 2438 (-573)

2nd Tarkio Sand 2447 (-582)

Sd, gray to greenish, v. fine grain, mica, friable, fair porosity, fair stain, SFO, odor

Tarkio Lime 2481 (-616)

LS, gray to cream, foss, chalky

Sh, gray to green, silty, soft

Sd, gray to green, v. fine grain, sub angular, mica, friable, trace stain, no odor

Elmont 2544 (-679)

LS, tan to gray, FXL, few foss, chalky

LS, tan to gray, FXLN, foss, chalky poor vis porosity,

Sh, gray to green

1:240 Imperial

Total Gas (units)	100
C1 (units)	100
C2 (units)	100
C3 (units)	100
C4 (units)	100

DST # 1 2416' - 2500'
 30-30-45-60

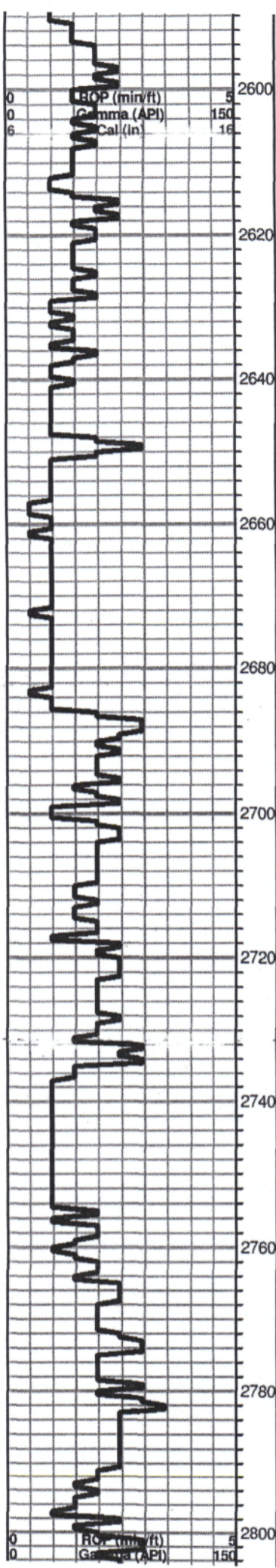
1st Open BOB 2.5 min.
 2nd Open BOB 1 min.

Recovery
 670' Gas In Pipe
 80' mud with oil spots

Pressures

IFP 63-72 psi
 FFP 185-99 psi
 ISIP 396 psi
 FSIP 497 psi
 HSH 1222-1139 psi

Total Gas (units)	100



Black carb shale

Sand , tan to gray, v. fine grain, friable, scattered porosity, stain??

LS, white to gray, FXLN chalky

Sand A/A

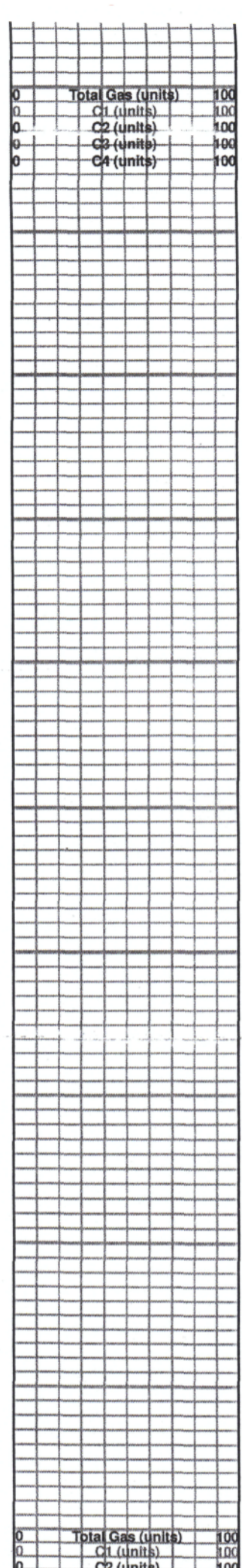
Howard 2684 (-819)

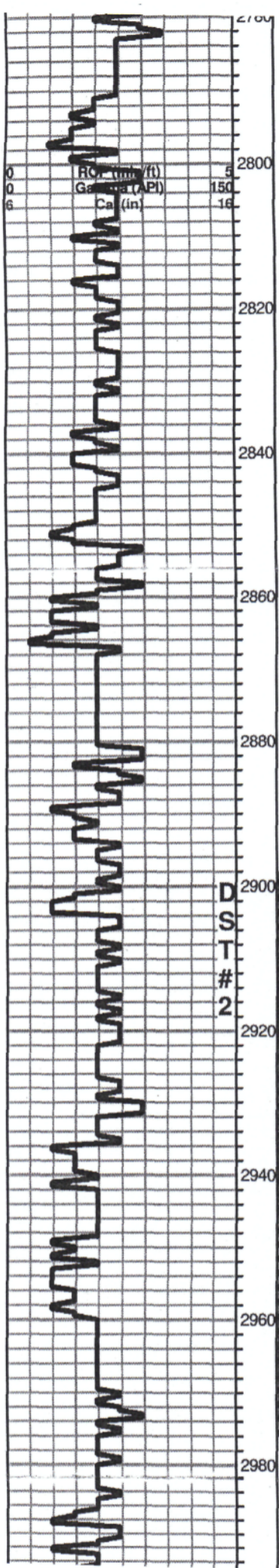
LS, cream, white, gray, FXLN, Foss, poor visible porosity

Shale gray to black silty

Topeka 2756 (-891)

LS, gray to tan, FXLN, foss, poor visible porosity, cherty





LS, gray to tan, FXLN, foss, dense, poor visible porosity

Black carb shale

LS, tan to cream FXLN, foss, poor scattered porosity, chalky, trace stains??? NSFO

LS, white to light gray, FXLN, foss, poor visible porosity, sl. chalky

Black carb shale

LS, tan to cream, FXLN, foss, ool, poor scattered porosity, fair INXLN porosity, golden brown stain, SFO

LS, cream, tan to gray, FXLN, ool, foss, poor to fair INXLN porosity, brown stain, SFO

LS, tan to buff, FXLN, ool, foss, poor to fair INXLN porosity, fair oom porosity, golden brown stain, SFO, ft. odor

LS, cream to tan, FXLN, dense, poor vis porosity

Heebner 2986 (-1121)

Black carb shale

0	Total Gas (units)	100
0	C1 (units)	100
0	C2 (units)	100
0	C3 (units)	100
0	C4 (units)	100

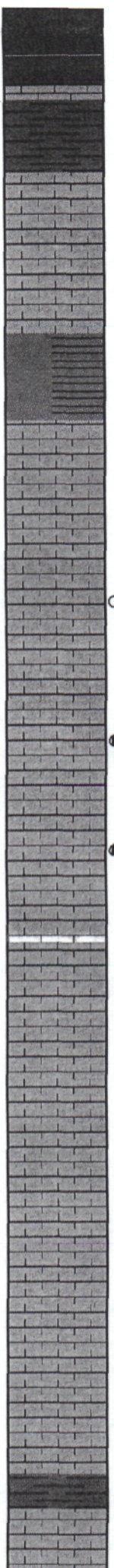
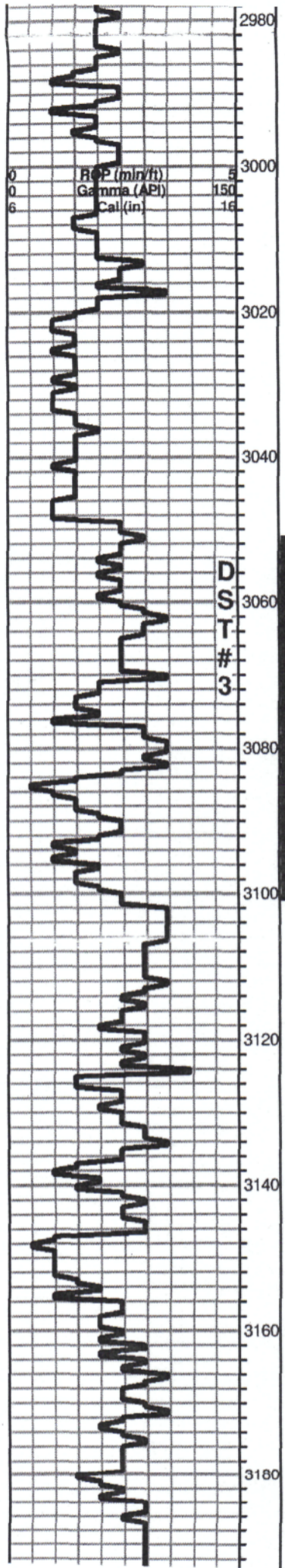
DST # 2 2899'-2975'
30-45-45-60

1st Open weak blow
3.5"

2nd Open dead

Recovery
63' VSOCM
(2% Oil, 98% Mud)

Pressures
IFP 58-81 psi
FFP 383-763 psi
ISIP 725 psi
FSIP 771 psi



Heebner 2986 (-1121)

Black carb shale

Sh. gray to green

Toronto 3002 (-1137)

LS, white to cream, FXLN, few foss, poor INXLN porosity, golden brown stains, NSFO, Trc. gas bubbles

Sh, gray, green, brown

Lansing 3048 (-1183)

LS, cream to white, FXLN dense, poor PPT porosity, poor INXLN porosity, Sl. chalky, trc. SFO, light brown stain

LS, tan to buff, FXLN, poor-fair INXLN porosity, golden brown stain, SFO, odor

LS, white to cream, FXLN, ool, poor to fair INXLN porosity, golden brown stains, SFO, odor

LS, white to light gray, FXLN, slightly ool, chalky, poor visible porosity

LS, gray to tan, FXLN, ool, poor visible porosity,

LS, white to cream, FXLN, ool, poor oomoldic porosity, trace stain, faint odor

LS, white to light gray, FXLN, ool, scattered poor OOM porosity, chalky

Shale gray to green

0	Total Gas (units)	100
0	C1 (units)	100
0	C2 (units)	100
0	C3 (units)	100
0	C4 (units)	100

DST # 3 3052'-3100'
30-45-45-60

1st Open BOB 8 min
2nd Open BOB 13 min

Recovery

126' Gas In Pipe

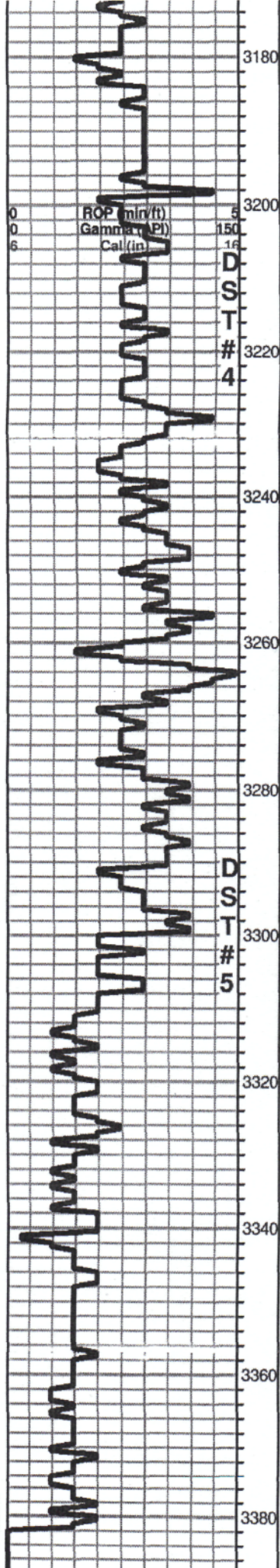
126' VSOCMW
(2% Oil, 88% Water,
10% Mud)

220' GOCWM
(10% Gas, 15% Oil,
15% Water, 60% Mud)

5' Gassy Oil
(10% Gas, 90% Oil)

Pressures

IFP 42-137 psi
FFP 180-200 psi
ISIP 406 psi
FSIP 413 psi
HSH 1552-1518 psi



Shale gray to green

LS, white to light gray, FXLN, poor visible porosity, chalky, no shows

LS, cream to tan, FXLN, ool, poor INXLN porosity, golden brown stain, SFO, odor

LS, cream to light gray, FXLN, poor scattered porosity, chalky, trace brown stain, no shows

LS, cream to white, FXLN, ool, poor to fair INXLN porosity, poor oomoldic porosity, Sl. chalky, light goldne brown stain, SFO, odor

LS, cream to white, FXLN, poor visible porosity, dense

Shale, maroon to gray

Arbuckle 3308 (-1443)

Dol, white to cream, F-Med XLN, rhomb, poor to fair INXLN porosity, golden brown stain, SFO, odor

Dol, white to cream, MXLN, good scattered porosity, fair SFO, good odor

Dol, white to cream, F-MXLN, fair scattered porosity, Light SFO, good odor

Dol white, FXLN, poor INXLN porosity, trace black stain, NSFO, faint odor

Dol, white, FXLN, dense, poor INXLN porosity, no shows

RTD 3381'

DST # 4 3206'-3275'
30-45-45-60

1st Open 5.5"
2nd Open weak blow died in 20 min

Recovery
60' Mud with Oil spots

Pressures
IFP 42-61 psi
FFP 532-673 psi
ISIP 619 psi
FSIP 695 psi
HSH 1466-1611 psi

DST # 5 3288-3318
30-30-30-30

1st Open weak blow
2nd Open no blow

Recovery
15' mud

IFP 18-19 psi
FFP 189-572 psi
ISIP 360 psi
FSIP 387 psi
HSH 1655-1617 psi

DST #6 3288-3331
30-30-45-60

1st Open BOB 10 min
2nd Open BOB 13 min

Recovery
220' Gas In Pipe
189' GHOCM
(10% Gas, 35% Oil, 55% Mud)

221' Gassy Oil
(20% Gas, 80% Oil)

Pressures
IFP 21-83 psi
FFP 90-162 psi
ISIP 1034 psi
FSIP 1032 psi
HSH 1618-1600 psi