

KEVIN L. KESSLER

CONSULTING PETROLEUM GEOLOGIST

(316) 522-7338

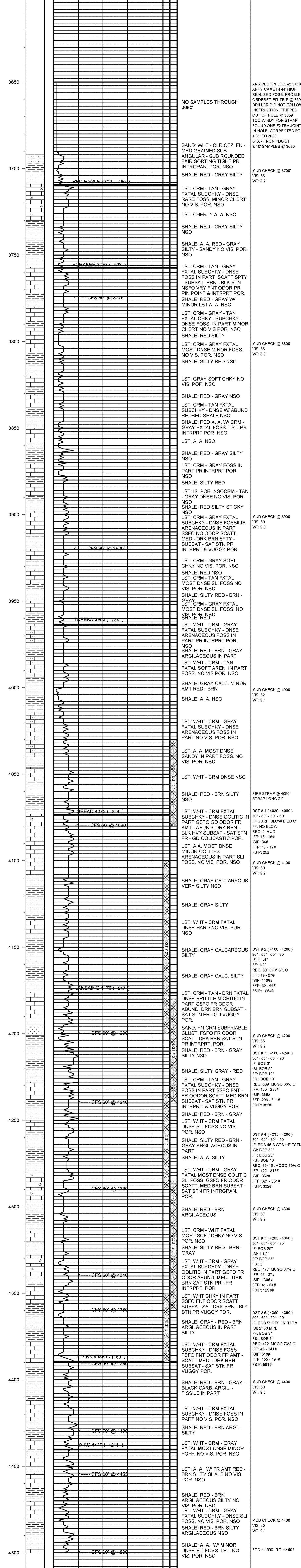
OPERATOR : MURFIN DRILLING COMPANY INC.	ELEVATION
LEASE : WALTER	KB : 3229
WELL # : 3 - 1	GL : 3218
LOCATION : 330' FNL & 330' FEL	MEASUREMENTS FROM
SEC: 01	KB
TWP : 01 S	CASING RECORD
RGE : 36 W	SURFACE :
STATE : KANSAS	8 5/8" @ 265'
	PRODUCTION :
	5 1/2" @ 4500'
	ELECTRICAL SURVEYS:
	CDL/CNL
	DIL
	MICRO
	SONIC

CONTRACTOR : MURFIN DRILLING RIG # 2 COMM: 10 / 09 / 2013 RTD : 4500 SAMPLES SAVED FROM : 3650 GEOLOGICAL SUPERVISION FROM : 3650 MUD UP : 3400	COMP : 10 / 17 / 2013 LOG TD : 4502 TO : RTD TYPE MUD : CHEMICAL	
---	--	--

FORMATION	TOP	SAMPLE	DATUM	TOP	LOG	DATUM	STRUCT. COMP.
RED EAGLE	3709	- 480	3710	- 481	- 01		
FORAKER	3757	- 528	3756	- 527	Flat		
TOPEKA	3963	- 734	3964	- 735	Flat		
LANSING	4176	- 947	4180	- 951	- 02		
STARK	4389	- 1160	4394	- 1165	- 05		
BASE / KC	4440	- 1211	4444	- 1215	- 01		

REFERENCE WELL FOR STRUCTURAL COMPARISON :

MURFIN DRILLING # 2 - 1 WALTER SEC 01 - T 01 S - R 36 W RAWLINS COUNTY KANSAS



COMMENTS:

5 1/2" PRODUCTION CASING WAS SET TO

FURTHER EVALUATE THE PRODUCTIVITY OF THIS WELL

KEVIN L. KESSLER