

TRILOBITE TESTING, INC.

DRILL STEM TEST REPORT

Mai Oil Operations, Inc.
 8411 Preston Rd 800
 Dallas TX 75225
 ATTN: Jim Musgrove

23-15s-14w Russell, KS
Bender Trust #1
 Job Ticket: 55476 **DST#: 1**
 Test Start: 2013.11.24 @ 06:20:00

GENERAL INFORMATION:

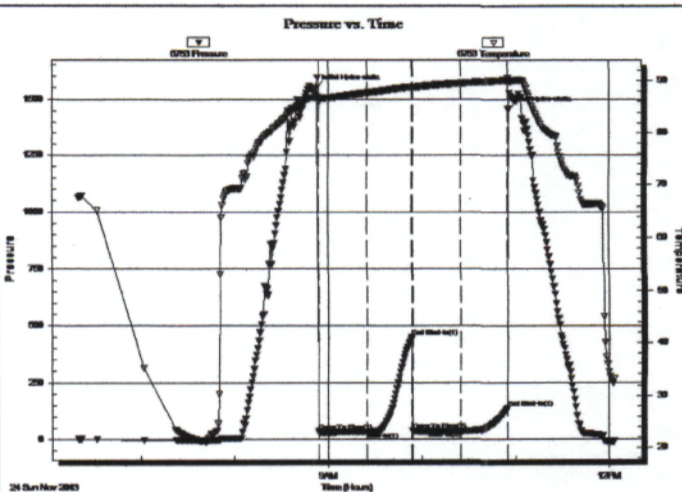
Formation: **KC**
 Deviated: **No** Whipstock: ft (KB)
 Time Tool Opened: 08:54:00
 Time Test Ended: 12:04:00
 Interval: **3104.00 ft (KB) To 3150.00 ft (KB) (TVD)**
 Total Depth: 3150.00 ft (KB) (TVD)
 Hole Diameter: 7.88 inches Hole Condition: Fair
 Test Type: Conventional Bottom Hole (Initial)
 Tester: Brett Dickinson
 Unit No: 59
 Reference Elevations: 1911.00 ft (KB)
 1903.00 ft (CF)
 KB to GR/CF: 8.00 ft

Serial #: 6753

Inside

Press@RunDepth: 37.21 psig @ 3114.00 ft (KB) Capacity: 8000.00 psig
 Start Date: 2013.11.24 End Date: 2013.11.24 Last Calib.: 2013.11.24
 Start Time: 06:20:05 End Time: 12:03:59 Time On Btm: 2013.11.24 @ 08:52:15
 Time Off Btm: 2013.11.24 @ 10:55:30

TEST COMMENT: F-1" blow
 ISI-No blow
 FF-1" blow
 FSI-No blow



PRESSURE SUMMARY

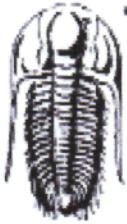
Time (Min.)	Pressure (psig)	Temp (deg F)	Annotation
0	1548.67	86.84	Initial Hydro-static
2	34.23	86.52	Open To Flow (1)
33	35.36	87.76	Shut-In(1)
62	449.52	88.85	End Shut-In(1)
62	37.97	88.77	Open To Flow (2)
93	37.21	89.57	Shut-In(2)
123	138.61	90.17	End Shut-In(2)
124	1451.88	90.24	Final Hydro-static

Recovery

Length (ft)	Description	Volume (bbl)
20.00	VSOCM 2%O 98%M	0.28

Gas Rates

	Choke (inches)	Pressure (psig)	Gas Rate (Mcf/d)



TRILOBITE TESTING, INC.

DRILL STEM TEST REPORT

Mai Oil Operations, Inc.
 8411 Preston Rd 800
 Dallas TX 75225
 ATTN: Jim Musgrove

23-15s-14w Russell, KS
Bender Trust #1
 Job Ticket: 55477 **DST#: 2**
 Test Start: 2013.11.25 @ 01:35:00

GENERAL INFORMATION:

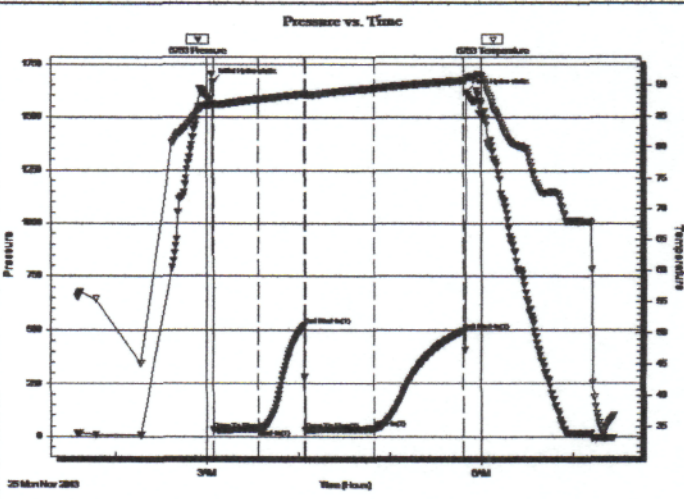
Formation: **KC**
 Deviated: **No Whipstock:** ft (KB)
 Time Tool Opened: 03:04:15
 Time Test Ended: 07:27:15
 Interval: **3257.00 ft (KB) To 3295.00 ft (KB) (TVD)**
 Total Depth: **3295.00 ft (KB) (TVD)**
 Hole Diameter: **7.88 inches** Hole Condition: **Fair**
 Test Type: **Conventional Bottom Hole (Reset)**
 Tester: **Brett Dickinson**
 Unit No: **59**
 Reference Elevations: **1911.00 ft (KB)**
1903.00 ft (CF)
 KB to GR/CF: **8.00 ft**

Serial #: 6753

Inside

Press@RunDepth: **38.31 psig @ 3259.00 ft (KB)** Capacity: **8000.00 psig**
 Start Date: **2013.11.25** End Date: **2013.11.25** Last Calib.: **2013.11.25**
 Start Time: **01:35:05** End Time: **07:27:14** Time On Btrn: **2013.11.25 @ 03:03:45**
 Time Off Btrn: **2013.11.25 @ 05:50:00**

TEST COMMENT: **F-10" blow**
IS-10" blow
FF-11" blow
FS-10" blow



PRESSURE SUMMARY

Time (Min.)	Pressure (psig)	Temp (deg F)	Annotation
0	1664.61	86.92	Initial Hydro-static
1	33.29	86.42	Open To Flow (1)
30	36.58	87.60	Shut-In(1)
61	521.41	88.50	End Shut-In(1)
61	31.04	88.32	Open To Flow (2)
106	38.31	89.41	Shut-In(2)
165	496.97	90.62	End Shut-In(2)
167	1616.64	91.06	Final Hydro-static

Recovery

Length (ft)	Description	Volume (bbl)
15.00	15%G 85%O	0.21
20.00	10%O 90%M	0.28
0.00	90ft GIP	0.00

* Recovery from multiple tests

Gas Rates

	Choke (inches)	Pressure (psig)	Gas Rate (Mcf/d)



**TRILOBITE
TESTING, INC.**

DRILL STEM TEST REPORT

Mai Oil Operations, Inc.

23-15s-14w Russell,KS

8411 Preston Rd 800
Dallas TX 75225

Bender Trust #1

Job Ticket: 55478 DST#: 3

ATTN: Jim Musgrove

Test Start: 2013.11.25 @ 17:56:00

GENERAL INFORMATION:

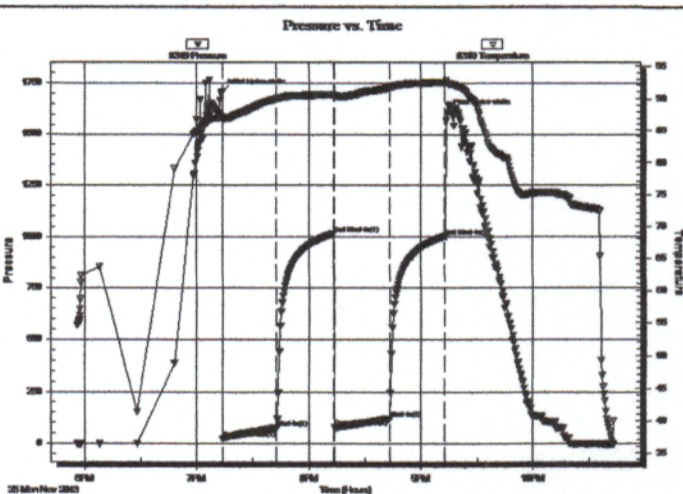
Formation: **Arbuckle**
 Deviated: **No Whipstock** ft (KB)
 Time Tool Opened: 19:14:00
 Time Test Ended: 22:43:15
 Interval: **3300.00 ft (KB) To 3349.00 ft (KB) (TVD)**
 Total Depth: **3349.00 ft (KB) (TVD)**
 Hole Diameter: **7.88 inches** Hole Condition: **Fair**
 Test Type: **Conventional Bottom Hole (Reset)**
 Tester: **Brett Dickinson**
 Unit No: **59**
 Reference Elevations: **1911.00 ft (KB)**
1903.00 ft (CF)
 KB to GR/CF: **8.00 ft**

Serial #: 8319

Outside

Press@RunDepth: **120.09 psig @ 3312.00 ft (KB)** Capacity: **8000.00 psig**
 Start Date: **2013.11.25** End Date: **2013.11.25** Last Calib.: **2013.11.25**
 Start Time: **17:56:05** End Time: **22:43:14** Time On Btm: **2013.11.25 @ 19:13:30**
 Time Off Btm: **2013.11.25 @ 21:14:15**

TEST COMMENT: F-BOB in 7 1/2 min
 ISI-1/8" blow
 FF-BOB in 8 1/2 min
 FSI-1/8" blow



PRESSURE SUMMARY

Time (Min.)	Pressure (psig)	Temp (deg F)	Annotation
0	1706.46	87.16	Initial Hydro-static
1	24.94	86.71	Open To Flow (1)
30	74.50	89.94	Shut-In(1)
60	1013.68	90.65	End Shut-In(1)
61	77.67	90.45	Open To Flow (2)
90	120.09	91.67	Shut-In(2)
119	999.44	92.54	End Shut-In(2)
121	1610.66	92.38	Final Hydro-static

Recovery

Length (ft)	Description	Volume (bbl)
200.00	GO 20%G 80%O	2.81
60.00	VGSOCM 35%G 5%O 60%M	0.84
0.00	240ft GIP	0.00

* Recovery from multiple tests

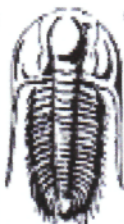
Gas Rates

	Choke (inches)	Pressure (psig)	Gas Rate (Mcf/d)

Tribolite Testing, Inc

Ref. No: 55478

Printed: 2013.11.27 @ 13:22:04



**TRILOBITE
TESTING, INC.**

DRILL STEM TEST REPORT

Mai Oil Operations, Inc.

23-15s-14w Russell,KS

8411 Preston Rd 800
Dallas TX 75225

Bender Trust #1

Job Ticket: 55479

DST#: 4

ATTN: Jim Musgrove

Test Start: 2013.11.26 @ 03:45:00

GENERAL INFORMATION:

Formation: **Arbuckle**

Deviated: **No Whipstock:** ft (KB)

Time Tool Opened: 05:18:30

Time Test Ended: 09:13:30

Test Type: **Conventional Bottom Hole (Reset)**

Tester: **Brett Dickinson**

Unit No: **59**

Interval: **3351.00 ft (KB) To 3361.00 ft (KB) (TVD)**

Total Depth: **3361.00 ft (KB) (TVD)**

Hole Diameter: **7.88 inches** Hole Condition: **Fair**

Reference Elevations: **1911.00 ft (KB)**

1903.00 ft (CF)

KB to GR/CF: **8.00 ft**

Serial #: 6753

Inside

Press@RunDepth: **1004.91 psig @ 3358.00 ft (KB)**

Start Date: **2013.11.26**

End Date:

2013.11.26

Capacity: **8000.00 psig**

Last Calib.: **2013.11.26**

Start Time: **03:45:05**

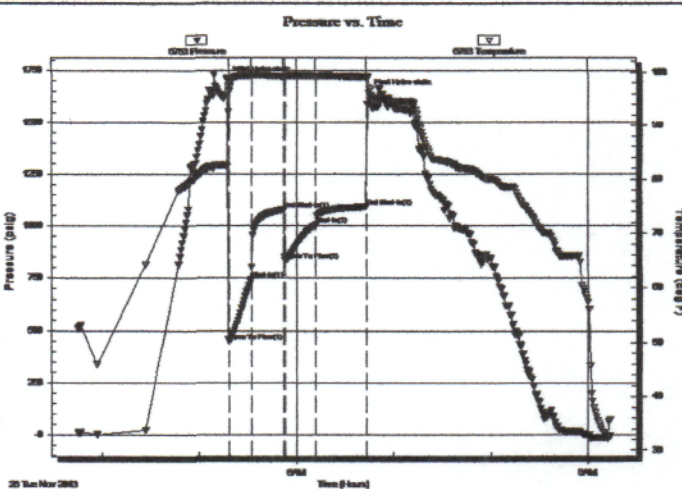
End Time:

09:13:29

Time On Btrr: **2013.11.26 @ 05:17:00**

Time Off Btrr: **2013.11.26 @ 06:44:15**

TEST COMMENT: **F-BOB in 15 sec
ISI-1/8" blow
FF-BOB in 15 sec
FSI-1/8" blow**



PRESSURE SUMMARY

Time (Min.)	Pressure (psig)	Temp (deg F)	Annotation
0	1705.64	82.17	Initial Hydro-static
2	448.77	96.52	Open To Flow (1)
15	743.78	99.39	Shut-In(1)
36	1077.83	99.21	End Shut-In(1)
36	831.92	99.04	Open To Flow (2)
55	1004.91	99.23	Shut-In(2)
86	1091.41	99.05	End Shut-In(2)
88	1643.14	99.06	Final Hydro-static

Recovery

Length (ft)	Description	Volume (bbl)
310.00	GVSMWCO 10%G 65%O 20%W 5%M	4.35
310.00	GWCO 10%G 60%O 30%W	4.35
180.00	VSOCW 2%O 98%W	2.52
1530.00	Water	21.46

* Recovery from multiple tests

Gas Rates

	Choke (inches)	Pressure (psig)	Gas Rate (Mcf/d)

TriLOBITE Testing, Inc

Ref. No: 55479

Printed: 2013.11.27 @ 13:21:23