

**TRILOBITE TESTING, INC.**

**DRILL STEM TEST REPORT**

Mai Oil Operations, Inc.  
 8411 Preston Rd. Ste. 800  
 Dallas, TX 75225  
 ATTN: Jim Musgrove

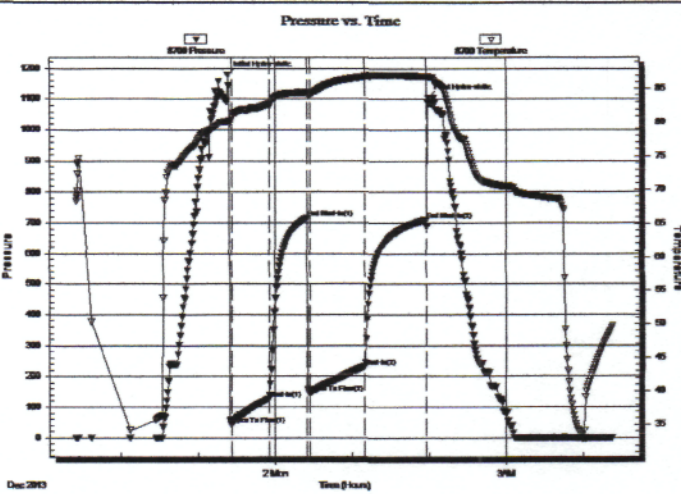
**9-15s-14w Russell,KS**  
**Martin Dietz #1**  
 Job Ticket: 55429 **DST#: 1**  
 Test Start: 2013.12.01 @ 21:24:53

**GENERAL INFORMATION:**

Formation: **Tarkio**  
 Deviated: **No Whipstock:** ft (KB)  
 Time Tool Opened: 23:26:08  
 Time Test Ended: 04:22:53  
 Test Type: **Conventional Bottom Hole (Initial)**  
 Tester: **Brannan L**  
 Unit No: **70**  
 Interval: **2404.00 ft (KB) To 2460.00 ft (KB) (TVD)**  
 Total Depth: **2460.00 ft (KB) (TVD)**  
 Hole Diameter: **7.88 inches** Hole Condition: **Fair**  
 Reference Elevations: **1839.00 ft (KB)**  
**1831.00 ft (CF)**  
 KB to GR/CF: **8.00 ft**

**Serial #: 8700** **Outside**  
 Press@RunDepth: **231.30 psig @ 2408.00 ft (KB)** Capacity: **8000.00 psig**  
 Start Date: **2013.12.01** End Date: **2013.12.02** Last Calb.: **2013.12.02**  
 Start Time: **21:24:58** End Time: **04:22:52** Time On Btm: **2013.12.01 @ 23:22:53**  
 Time Off Btm: **2013.12.02 @ 01:58:53**

**TEST COMMENT:** 30- IF- BOB 2 mins  
 30- IS- Built to 3"  
 45- FF- BOB 1 min  
 45- FS- No blow



**PRESSURE SUMMARY**

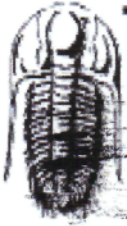
Time (Min.)	Pressure (psig)	Temp (deg F)	Annotation
0	1178.48	80.11	Initial Hydro-static
4	41.89	80.67	Open To Flow (1)
33	128.06	82.72	Shut-In(1)
62	715.43	84.40	End Shut-In(1)
64	147.28	84.05	Open To Flow (2)
107	231.30	86.75	Shut-In(2)
155	709.53	86.85	End Shut-In(2)
156	1105.43	86.76	Final Hydro-static

**Recovery**

Length (ft)	Description	Volume (bbl)
40.00	M	0.55
65.00	MW, 95%W	0.89
375.00	GWMCO, 55%O 30%G 10%W	5.12
0.00	1220' GIP	0.00

**Gas Rates**

	Choke (inches)	Pressure (psig)	Gas Rate (Mcf/d)



**TRILOBITE TESTING, INC**

**DRILL STEM TEST REPORT**

Mai Oil Operations, Inc.  
 8411 Preston Rd. Ste. 800  
 Dallas, TX 75225  
 ATTN: Jim Musgrove

**9-15s-14w Russell,KS**  
**Martin Dietz #1**  
 Job Ticket: 55430 **DST#: 2**  
 Test Start: 2013.12.03 @ 08:04:09

**GENERAL INFORMATION:**

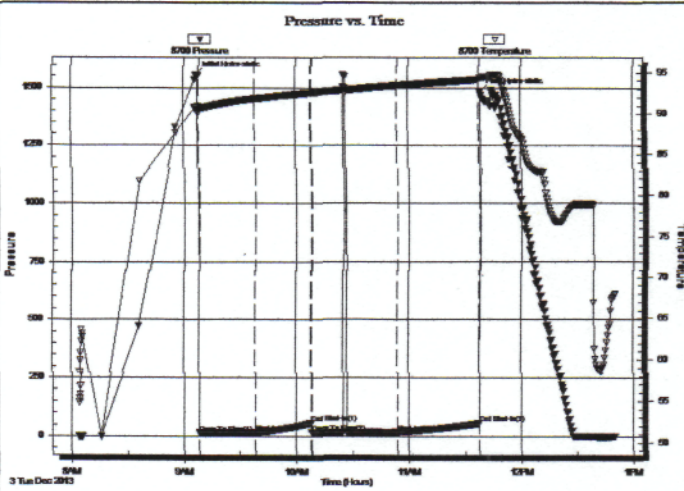
Formation: **LKC 'A-C'**  
 Deviated: No Whipstock: ft (KB)  
 Time Tool Opened: 09:08:09  
 Time Test Ended: 12:50:39  
 Interval: **3034.00 ft (KB) To 3084.00 ft (KB) (TVD)**  
 Total Depth: 3084.00 ft (KB) (TVD)  
 Hole Diameter: 7.88 inches Hole Condition: Fair  
 Test Type: Conventional Bottom Hole (Reset)  
 Tester: Brannan L  
 Unit No: 70  
 Reference Elevations: 1839.00 ft (KB)  
 1831.00 ft (CF)  
 KB to GR/CF: 8.00 ft

**Serial #: 8700**

**Outside**

Press@RunDepth: 17.92 psig @ 3037.00 ft (KB) Capacity: 8000.00 psig  
 Start Date: 2013.12.03 End Date: 2013.12.03 Last Calib.: 2013.12.03  
 Start Time: 08:04:14 End Time: 12:50:38 Time On Btm: 2013.12.03 @ 09:06:54  
 Time Off Btm: 2013.12.03 @ 11:38:24

**TEST COMMENT:** 30- IF- Built to 1/2"  
 30- IS- No blow  
 45- FF- No blow flushed tool after 15 mins and got weak surface blow  
 45- FS- No blow



**PRESSURE SUMMARY**

Time (Min.)	Pressure (psig)	Temp (deg F)	Annotation
0	1553.77	90.85	Initial Hydro-static
2	14.14	90.08	Open To Flow (1)
32	15.82	91.83	Shut-In(1)
61	55.71	92.55	End Shut-In(1)
62	16.13	92.55	Open To Flow (2)
107	17.92	93.44	Shut-In(2)
151	55.42	94.16	End Shut-In(2)
152	1481.82	94.42	Final Hydro-static

**Recovery**

Length (ft)	Description	Volume (bbl)
10.00	M	0.14

\* Recovery from multiple tests

**Gas Rates**

	Choke (inches)	Pressure (psig)	Gas Rate (Mcf/d)





**TRILOBITE TESTING, INC**

# DRILL STEM TEST REPORT

Mai Oil Operations, Inc.  
 8411 Preston Rd. Ste. 800  
 Dallas, TX 75225  
 ATTN: Jim Musgrove

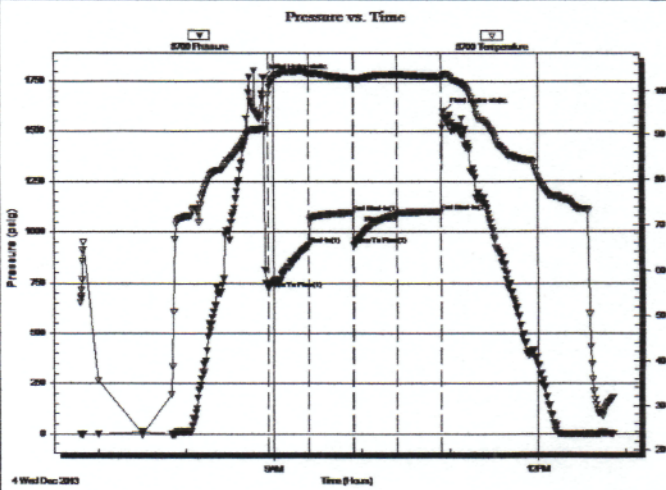
**9-15s-14w Russell,KS**  
**Martin Dietz #1**  
 Job Ticket: 55431      **DST#: 3**  
 Test Start: 2013.12.04 @ 06:48:07

**GENERAL INFORMATION:**

Formation: **Arbuckle**  
 Deviated: **No Whipstock:**      ft (KB)  
 Test Type: **Conventional Bottom Hole (Reset)**  
 Time Tool Opened: 08:56:22  
 Tester: **Brannan L**  
 Time Test Ended: 12:51:07  
 Unit No: **70**  
**Interval: 3232.00 ft (KB) To 3310.00 ft (KB) (TVD)**  
 Reference Elevations:      1839.00 ft (KB)  
 Total Depth: 3310.00 ft (KB) (TVD)  
 1831.00 ft (CF)  
 Hole Diameter: 7.88 inches      Hole Condition: Fair  
 KB to GR/CF: 8.00 ft

**Serial #: 8700      Outside**  
 Press@RunDepth: 1084.46 psig @ 3241.00 ft (KB)      Capacity: 8000.00 psig  
 Start Date: 2013.12.04      End Date: 2013.12.04      Last Calib.: 2013.12.04  
 Start Time: 06:48:12      End Time: 12:51:06      Time On Btm: 2013.12.04 @ 08:52:52  
 Time Off Btm: 2013.12.04 @ 10:55:52

**TEST COMMENT:** 30- IF- BOB 30 secs  
 30- IS- Surface blow  
 30- FF- BOB 30 secs  
 30- FS- No blow



**PRESSURE SUMMARY**

Time (Min.)	Pressure (psig)	Temp (deg F)	Annotation
0	1770.99	91.35	Initial Hydro-static
4	722.95	99.11	Open To Flow (1)
31	934.43	103.78	Shut-In(1)
61	1095.92	102.56	End Shut-In(1)
62	934.82	102.49	Open To Flow (2)
91	1084.46	103.61	Shut-In(2)
122	1101.29	103.07	End Shut-In(2)
123	1599.98	103.49	Final Hydro-static

**Recovery**

Length (ft)	Description	Volume (bbl)
2340.00	Water	31.97

\* Recovery from multiple tests

**Gas Rates**

Choke (inches)	Pressure (psig)	Gas Rate (Mcf/d)