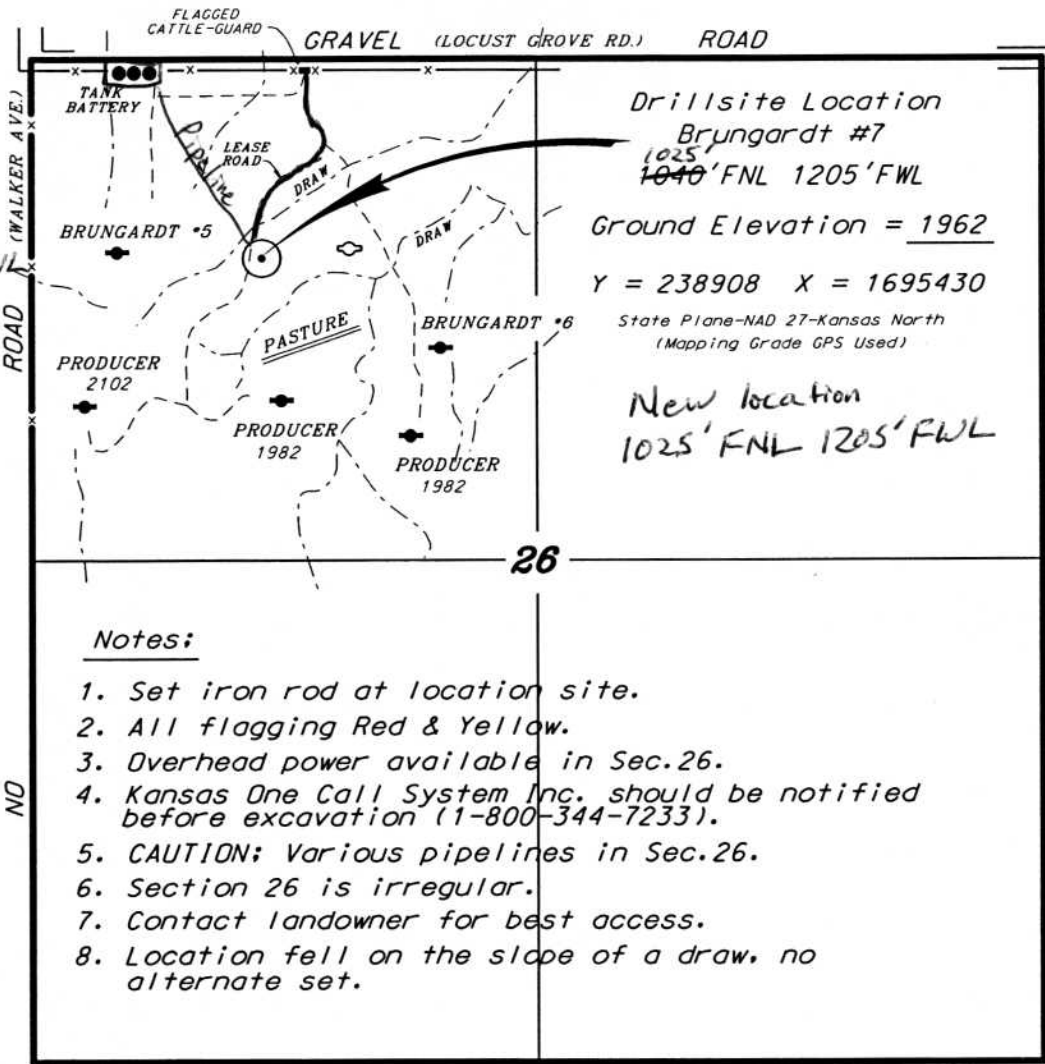


BRUNGARDT OIL & LEASING COMPANY
BRUNGARDT LEASE
 NW. 1/4, SECTION 26, T12S, R16W
 ELLIS COUNTY, KANSAS

New
 1025' FNL 1205' FWL

*Ingress and egress to location as shown on this plat is per usage only and may not be legally opened for public use. Contact landowner, tenant and county road department for access.

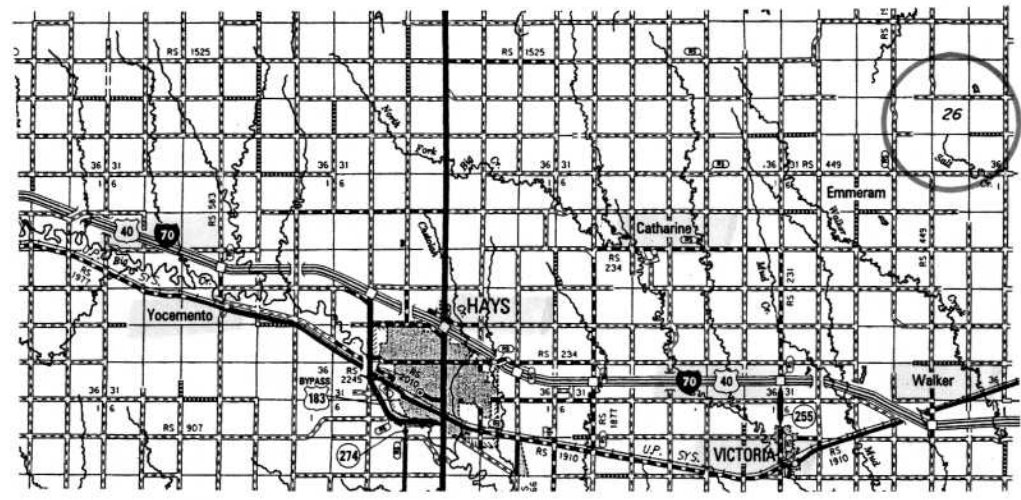


Drillsite Location
 Brungardt #7
 1025' FNL 1205' FWL
 Ground Elevation = 1962
 Y = 238908 X = 1695430
 State Plane-NAD 27-Kansas North
 (Mapping Grade GPS Used)

New location
 1025' FNL 1205' FWL

Notes:

1. Set iron rod at location site.
2. All flagging Red & Yellow.
3. Overhead power available in Sec.26.
4. Kansas One Call System Inc. should be notified before excavation (1-800-344-7233).
5. CAUTION; Various pipelines in Sec.26.
6. Section 26 is irregular.
7. Contact landowner for best access.
8. Location fell on the slope of a draw, no alternate set.



*Controlling data is based upon the best maps and photographs available to us and upon a regular section of land containing 640 acres.
 *Approximate section lines were determined using the normal standard of care of oilfield surveyors practicing in the state of Kansas. The section corners, which establish the precise section lines, were not necessarily located, and the exact location of the drillsite location in the section is not guaranteed. Therefore, the operator securing this service and accepting this plat and all other parties relying thereon agree to hold Central Kansas Oilfield Services, Inc., its officers and employees harmless from all losses, costs and expenses and said entities released from any liability from incidental or consequential damages.
 *Elevations derived from National Geodetic Vertical Datum.

Date August 16, 2012

