

Scale 1:240 (5"=100') Imperial
Measured Depth Log

Well Name: #1 L. EICHMAN
Location: E. OF SE - NW - SE of SEC. 11 - 27 S. - 24 W.
License Number: A.P.I. # 15-052
Surface Coordinates: SPOT: 1750' FSL & 1550' FEL
Bottom Hole Coordinates: 2436' N. & 100' W.
Ground Elevation (ft): 415' K.B. Elevation (ft): 2446'
Logged Interval (ft): 5082' W to Top of Drilling (ft): 2402'
Formation: MISSISSIPPIAN
Type of Drilling Fluid: Chemical/Polymers/Gel
Printed by WellSight Log Viewer from WellSight Systems 1-800-447-1534 www.WellSight.com

OPERATOR

Company: RITCHE EXPLORATION, INC. KCC LICENSE # 4767
Address: P.O. BOX 783
WICHITA, KANSAS 67278-3188

GEOLOGIST

Name: David P. Williams
Company: DW Energy, Inc.
Address: 3102 North Street
Wichita, Kansas 67208

CASING & DEVIATION

Surface Casing 8 5/8" set at 415' (9 Jts) (23#). Cemented w/ 310 cc Class A 3% cc 2% Gel (Allied Cementing).
Cement Did Circulate to Surface.
Stone Coral Anhydrite Sample Top = 1472' (+974'); Base = 1521' (+925); Stone Coral Anhydrite E. Log Top = 1482' (+964); Base = 1524' (+922).
Deviation Survey's Taken: @ 415' = 1 degree; @ 4805' = 0 degree; @ 5082' = 1/2 degree.

DSTs

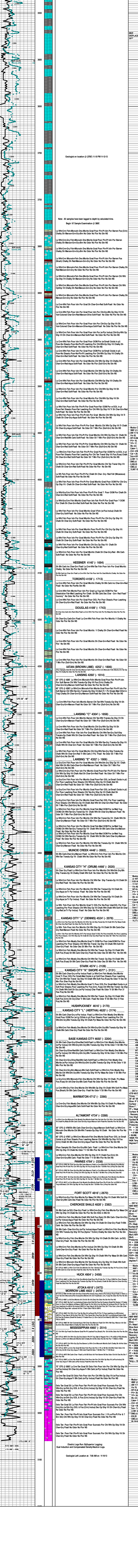
--- DST # 1--- 4776-4812'. Times: 30" 30"
Blow: IF=Weak Surface Blow 11"; FF=Weak Surface Blow 11";
Recovery: 25' Very Slightly Oil Spotted Mud (100%) Mud.
Pressures: IH=2422#; FH=2321#; IF=47-66#; FF=56-66#; ISIP=1002#; FSIIP=942#; Temp=113 degrees F.
--- DST # 2--- 4840-4945'. Times: 30" 45"
Blow: IF=Weak Surface Blow Build 3"; FF=Weak Surface Blow Build 2.5";
Recovery: 52' Mud. (100%) Mud.
Pressures: IH=2339#; FH=2363#; IF=112-146#; FF=119-122#; ISIP=189#; FSIIP=202#; Temp=113 degrees F.
--- DST # 3--- 4909-4945'. Times: 30" 45"
Blow: IF=Weak Surface Blow Build 1.5"; FF=Weak Surface Blow Build 1.5";
Recovery: 45' Very Lightly Oil Spotted Mud (100%) Mud. Pressures: IH= 2563#; FH=2380#; IF=74-82#; FF=86-91#; ISIP=782#; FSIIP=348#; Temp=120 degrees F.

Comments

After review of all geologic samples as examined, structural correlation to offsetting prior drilled wells, combined with the fluid and pressures results from the drill stem test taken and electric log analysis, it was determined by all parties that this well appears to be non-commercial and should be plugged and abandoned.

Respectfully submitted,
David P. Williams, P.G

Legend for Rock Types, Accessories, and Other Symbols. Includes categories like Anhy, Bent, Brec, Carb sh, Cht, Cyst, Coal, Congl, Dol, Grn sh, Gry sh, Gyp, Igne, Lmst, Meta, Mst, Red shale, Shale, Sst, Sstgr, Shly, Siltst, Ss, Tll, and symbols for Vuggy, Sorting, Rounding, Even, Spotted, Quies, Dead, Angular, Interval, Dst alt, and Straddle test tail p.



Electric Logs Run by Superior Logging; Dual Induction and Compensated Density/GR logs.
Geologist Left Location at: 7:00 AM on 11/19/13