



Geologist's Report  
Drilling Time and Sample Log

Operator: Quail Oil & Gas, LC  
Well No: #1-22  
Field: Wildcat APl No. 15-111-20495

Location: SW NE SE NW --- 1950' FNL & 1550' FWL  
Sec: 22 TWP: 18S RGE: 10E  
County: Lyon STATE: Kansas

Contractor: C & G Drilling #2  
RD: 2415 LOC TO: 2412  
Comm: 01/26/2014 COMP: 01/29/2014

Samplers Saved From: 1500' TO: TD  
Drilling Time Kept From: 1500' TO: TD  
Samples Examined From: 1500' TO: TD

Geological Supervision From: 1500' TO: TD  
Mud Up: TYPE MUD: CHEMICAL

Formation: LOG DATA TOP SAMPLE STRUC. DATE TIME DATE TIME

Hebber 1018 -151  
Lansing 1338 -69  
Swope 1681 -412 1674 -405  
Cherokee 1994 -725 1993 -724  
Saurer SD 2002 -733 2008 -739  
Cattlemans SD 2100 -831 2102 -833  
Bartlesville 2201 -932 2204 -935  
Mississippian 2360 -1091 2360 -1091  
TD 2412 -1143 2415 -1146

ELEVATION: KB 1269'  
DF: 1260'

Measurements: All  
From: KB  
CASING RECORD  
SURFACE Set 3 Its 8 5/8" 23#  
@ 125' w/ 85 Sks

PRODUCTION:  
ELECTRICAL SURVEYS  
CNT/PRT/LDT/MLT



REFERENCE WELL FOR STRUCTURAL POSITION

Operator: Quail Oil & Gas  
Address: 525 Industrial Dr.  
P.O. Box K  
Garden City, KS

Remarks:  
Due to the lack of reservoir development and oil and gas shows in the target zones, the well was plugged and abandoned.

Contractor:  
C&G Drilling Rig #2  
701 E. River ST  
Eureka, KS  
67045

Geologist:  
Name: David A. Barker  
Company:  
Address: 212 N. Market, Suite# 320  
Wichita, Kansas 67202  
(316) 259-4294, 2Barker@sbcglobal.net

DST #1  
2324'-2364' IF: 1:42" 1/4" BB, BUILT TO  
1.5" 30 MIN; FF: WSB/NB NOBB; REC  
8' DM; HP 1087-1073#, FP 9-13/13-16,  
SIP 805-795



- FOSSIL
- Algae
  - Amph
  - Belm
  - Bioclst
  - Brach
  - Bryozoa
  - Cephal
  - Coral
  - Crin
  - Echin
  - Fish
  - Foram
  - Fossil
  - Gastro
  - Oolite
  - Ostra
  - Pelec
  - Pellet

- MINERAL
- Anhy
  - Arggrm
  - Arg
  - Bent
  - Bit
  - Brecfrag
  - Calc
  - Carb
  - Chtdk
  - Dol
  - Feldspar

- ACCESSORIES
- Ferrpel
  - Ferr
  - Glau
  - Gyp
  - Hvymrn
  - Kaol
  - Marl
  - Minxl
  - Nodule
  - Phos
  - Pyr
  - Salt
  - Sandy
  - Silt
  - Sil
  - Sulphur
  - Tuff
  - Chlorite
  - Dol

- TEXTURE
- Boundst
  - Chalky
  - Cryxln
  - Earthy
  - Finexln
  - Grainst
  - Lithogr
  - Microxln
  - Mudst
  - Packet
  - Wackest

- OTHER SYMBOLS
- Fracture
  - Inter
  - Moldic
  - Organic
  - Pinpoint
  - Vuggy

- LITHOLOGY
- Anhy
  - Cht
  - Congl
  - Shale
  - Shgy
  - Ss

- ROCK TYPES
- Carb shale
  - Gray shale
  - Sandy lmst
  - Shale
  - Silt stn
  - Shaly slst
  - Silty shale
  - Blank
  - Gray lmst
  - Cream lmst
  - Red shale
  - Blue-green siltstn
  - Green shale
  - Silty shale
  - Gray lmst
  - Brown lmst
  - Red shale
  - Blue-green siltstn
  - D. green shale
  - Green shale
  - D. green lmst
  - Light cream lmst
  - Gray cream lmst
  - Green dol
  - Brown dol
  - Brown dol
  - Brown dol

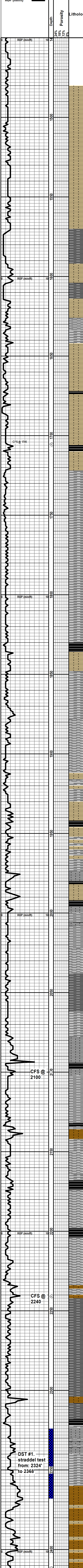
- ROUNDING
- Rounded
  - Subrnd
  - Subang
  - Angular

- OIL SHOWS
- Even
  - Spotted
  - Ques
  - Dead
  - Gas show

- INTERVALS
- Core
  - Dst

- EVENTS
- Rft
  - Sidewall
  - Cfs
  - Conn

- POROSITY TYPE
- Earthy
  - Fenest



Geographical Descriptions:  
 LS: cream, finexyln, friable, no show, Chert: white  
 Shale: light gray, massive, LS: buff, oolitic, slight visible porosity, fair interxyln porosity, LS: gray, mediumxyln, mott, firm  
 LS: cream to buff, fine xyln, friable in part, Shale: gray to gray/green  
 LS: cream to buff, fine xyln, friable in part, Shale: gray to gray/green, poor sample  
 Shale: dark gray  
 Shale: dark gray, LS: cream, finexyln, friable  
 Shale: dark gray, loose pyrite  
 Shale: dark gray to black/gray  
 Shale: gray, LS: cream to buff, finexyln, fraible  
 LS: cream to buff/brown, microxyln, dense in part, fraible in part Shale: light gray, no show  
 Swope @ 1674 -405  
 LS: cream to buff, finexyln, friable in part so show Shale: gray  
 Shale: gray to gray/green, LS: white to cream, chky in part, fraible. sample mostly gray shale.  
 Shale: gray/green, LS: tan, microxyln, very dense  
 Shale: light gray, soft in part, LS: brown, microxyln, very dense, sct loose pyrite, Coal: dense  
 Shale: gray, soft, Coal: dense, Lignite, and loose pyrite  
 Shale: gray to gray/green, loose pyrite  
 Shale: gray with loose pyrite  
 LS: cream to buff, finexyln to microxyln, Shale: green  
 Shale: light gray, LS: cream to buff, finexyln friable, sample mostly shale  
 LS: buff, microxyln, poor interxyln porosity, Shale: gray  
 Shale: black, carb Shale: brown/gray, Siltstone: light green, friable,  
 Siltstone: gray, no show, blocky poor intergranular porosity  
 LS: white, chky to gray, microxyln dense, Shale: gray  
 shale: dark gray to black, LS: gray/brown, microxyln, dense  
 Shale: gray to dark gray, black  
 LS: dirty cream, silty, blocky, Shale: gray to black, carb  
 LS: gray/brown, microxyln, dense, blocky, Shale: reddish brown  
 Squirrel Interval  
 Shale: soft, gray, silty Siltstone: gray, dense, no show  
 Shale: gray  
 Shale: gray, silty, Siltstone: gray, included loose pyrite  
 LS: dark gray/brown, microxyln, very dense, platy, Shale: dark black, carboniferous, loose pyrite  
 Siltstone: gray, no show, Shale: black, carb  
 LS: dark brown, microxyln, desne, Shale: gray, silty  
 Shale: gray, Siltstone: gray, LS: dirty brown, microxyln, dense,  
 Shale: dark gray, LS: dark brown, microxyln, Siltstone: gray, dense, platy, very dense  
 Shale: dark gray/black, Siltstone: light gray, blocky, dense, LS: light gray, microxyln, dense  
 Siltstone: gray, Shale: gray to black, LS: gray to gray/brown, microxyln, dense,  
 Shale: black carboniferous, dense  
 Bartlesville Interval @ 2204 -935  
 Shale: black to dark brown, Siltstone: light gray, dense, blocky, no show  
 2240 20 min: Siltstone: gray, lmy dense, lmy streaks, no show. LS: dark gray/brown, microxyln, very dense, Sahel: gray to gray/brown  
 Shale: black, carb. LS: brown, finexyln, desne, blocky  
 Shale: gray to black with LS: dark brown, microxyln, very dense  
 Shale: dark gray/black, carb, pyritic in part  
 Shale: black, carb, LS: light gray/brown, microxyln, dense, no visible porosity, dense, mudstone  
 LS: brown, finexyln, mott, pyritic, very dense, dark brown chert  
 Mississippian @ 2360-1091  
 LS: dark brown, microxyln, dense, LS: cream, finexyln, poor interxyln porosity, sct mediumxyln in part, no show  
 LS: cream to buff, finexyln, gray/cream in part, poor interxyln porosity, LS: white, chky  
 LS: buff, finexyln, poor interxyln porosity, LS: white chky

Curve Track 1  
ROP (min/ft)  
CFS @ 1705  
CFS @ 2100  
CFS @ 2240  
DST #1. straddel test from: 2324' to 2368"  
RTD 2412

TG, C1-C5  
TG (units)  
C1 (units)  
C2 (units)  
C3 (units)  
C4 (units)  
C5 (units)