

CORNISH

PHONE 431-9308
 WIRELINE SERVICES, INC.
 P.O. DRAWER H
 CHANUTE, KANSAS

RADIOACTIVITY LOG

| | | | |
|--|--|----------------------------------|--|
| FILING NO. | | COMPANY E.O.R. PETROLEUM COMPANY | |
| WELL EWING B NO. V-7 | | STATE KANSAS | |
| FIELD | | COUNTY ANDERSON | |
| LOCATION: NE 1/4 | | OTHER SERVICES: | |
| SEC. 13 TWP. 21S RGE. 20E | | ELEV.: K.B. _____ | |
| PERMANENT DATUM: G.L.L. ELEV. _____ | | D.F. _____ | |
| LOG MEASURED FROM G.L.L. FT. ABOVE PERM. DATUM | | G.L. _____ | |
| DRILLING MEASURED FROM G.L.L. | | DATE 1-28-83 | |
| RUN NO. 1 NW | | DATE 1-28-83 | |
| TYPE LOG GAMMA RAY | | DATE 1-28-83 | |
| DEPTH--DRILLER | | TYPE LOG NEUTRON | |
| DEPTH--LOGGER 686.2' | | DATE 1-28-83 | |
| BOTTOM LOGGED INTERVAL 680.4' | | TYPE LOG PERFORATE | |
| TOP LOGGED INTERVAL 443' | | DATE 1-28-83 | |
| TYPE FLUID IN HOLE WATER | | TYPE LOG | |
| SALINITY, PPM CL. _____ | | DATE | |
| DENSITY _____ | | TYPE LOG | |
| LEVEL FULL | | DATE | |
| MAX. REC. TEMP., DEG F. _____ | | TYPE LOG | |
| OPERATING RIG TIME _____ | | DATE | |
| RECORDED BY SANBORN, G. | | TYPE LOG | |
| WITNESSED BY FRENCH, G. | | DATE | |

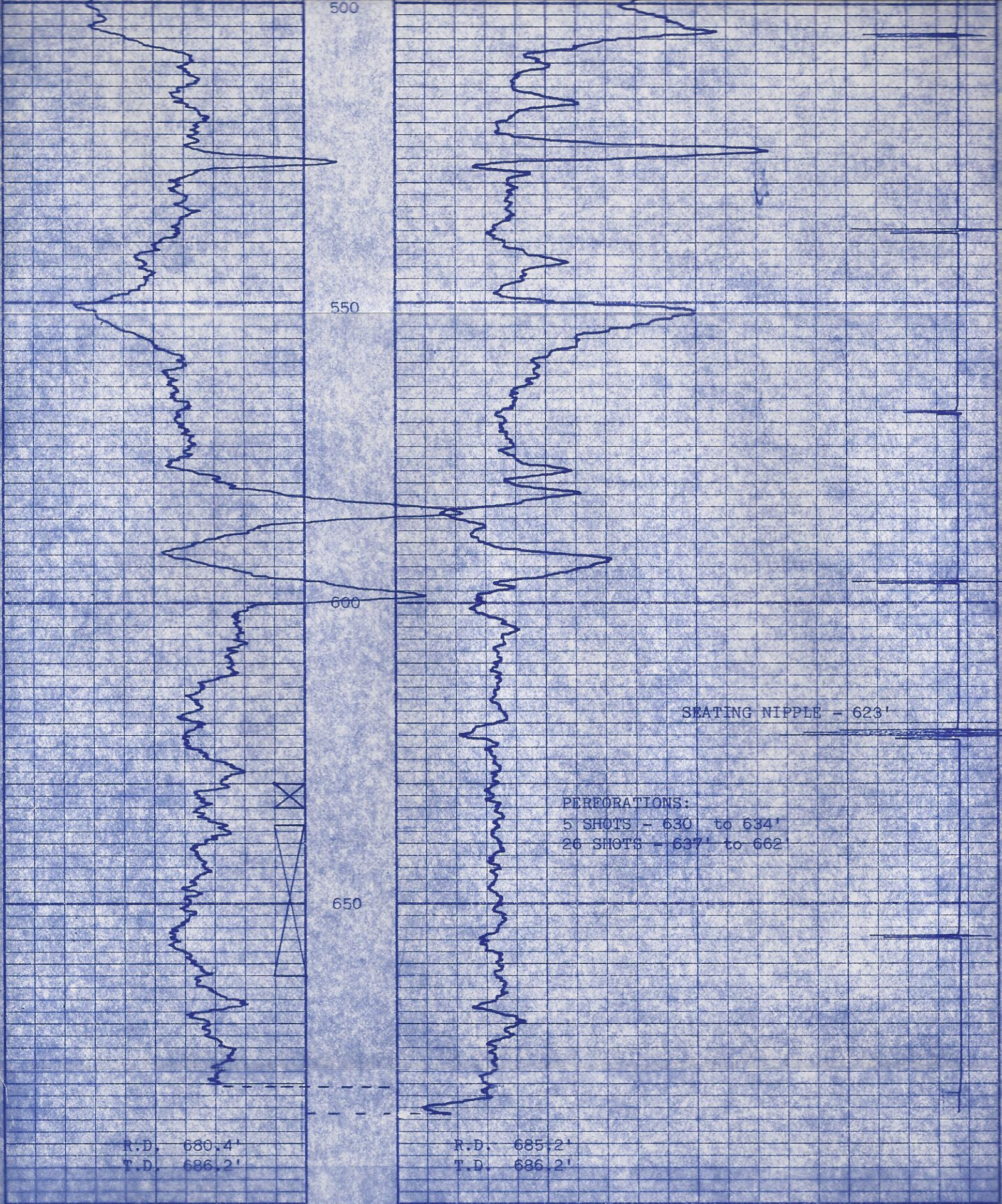
FOLD HERE THIS HEADING AND LOG CONFORMS TO API RP 33

| EQUIPMENT DATA | | | |
|-----------------------|----------|--------------------|---------------------|
| GAMMA RAY | | NEUTRON | |
| RUN NO. | 1 NW | RUN NO. | 1 NW |
| TOOL MODEL NO. | 9205 | LOG TYPE | NEU/NEU |
| DIAMETER | 1-11/16" | TOOL MODEL NO. | 9205 |
| DETECTOR MODEL NO. | 95SC | DIAMETER | 1-11/16" |
| TYPE | SCINT. | DETECTOR MODEL NO. | 95HE |
| LENGTH | 1"x4" | TYPE | He ³ |
| DISTANCE TO N. SOURCE | 8.5' | LENGTH | 1"x6" |
| | | SOURCE MODEL NO. | AC |
| | | SERIAL NO. | MRC415 |
| | | SPACING | 13" |
| | | TYPE | Am/Be ⁶ |
| | | STRENGTH | 6.7x10 ⁶ |

| LOGGING DATA | | | | | | | | | | | |
|--------------|--------|------|----------------|-----------|----------------|------------------|-----------------------------|-----------|----------------|------------------|---------------------------|
| GENERAL | | | GAMMA RAY | | | | NEUTRON | | | | |
| RUN NO. | DEPTHS | | SPEED FT./MIN. | T.C. SEC. | SENS. SETTINGS | ZERO DIV. L OR R | API G.R. UNITS PER LOG DIV. | T.C. SEC. | SENS. SETTINGS | ZERO DIV. L OR R | API N. UNITS PER LOG DIV. |
| 1 | 685.2' | 443' | 25 | 2.5 | 10-.0 | 2L | 20 | 2.0 | 0-.35 | 4L | |
| | | | | | | | | | | | |
| | | | | | | | | | | | |

REFERENCE LITERATURE:

REMARKS:



EWING B NO. V-7

E.O.R. PETROLEUM COMPANY

ANDERSON COUNTY, KANSAS

JANUARY 28, 1983

13/21S/20E