

# CORNISH

PHONE 431-9308  
 WIRELINE SERVICES, INC.  
 P.O. DRAWER H  
 CHANUTE, KANSAS

## RADIOACTIVITY LOG

FILING NO. \_\_\_\_\_

COMPANY E.O.R. PETROLEUM COMPANY

WELL EWING B NO. T-7

FIELD \_\_\_\_\_

COUNTY ANDERSON STATE KANSAS

LOCATION: NE 1/4

SEC. 13 TWP. 21S RGE. 20E

OTHER SERVICES: \_\_\_\_\_

PERMANENT DATUM:	G.L.	ELEV. _____	ELEV.: K.B. _____
LOG MEASURED FROM	G.L.	_____ FT. ABOVE PERM. DATUM	D.F. _____
DRILLING MEASURED FROM	G.L.	_____	G.L. _____
DATE	1-28-83	1-28-83	1-28-83
RUN NO.	1 NW	1 NW	1 NW
TYPE LOG	GAMMA RAY	NEUTRON	PERFORATE
DEPTH—DRILLER			
DEPTH—LOGGER	699.0'	699.0'	
BOTTOM LOGGED INTERVAL	693.2'	698.0'	
TOP LOGGED INTERVAL	258'	263'	
TYPE FLUID IN HOLE	WATER	WATER	WATER
SALINITY, PPM CL.			
DENSITY			
LEVEL	FULL	FULL	FULL
MAX. REC. TEMP., DEG F.			
OPERATING RIG TIME			
RECORDED BY	SANBORN, G.	SANBORN, G.	SANBORN, G.
WITNESSED BY	FRENCH, G.	FRENCH, G.	FRENCH, G.

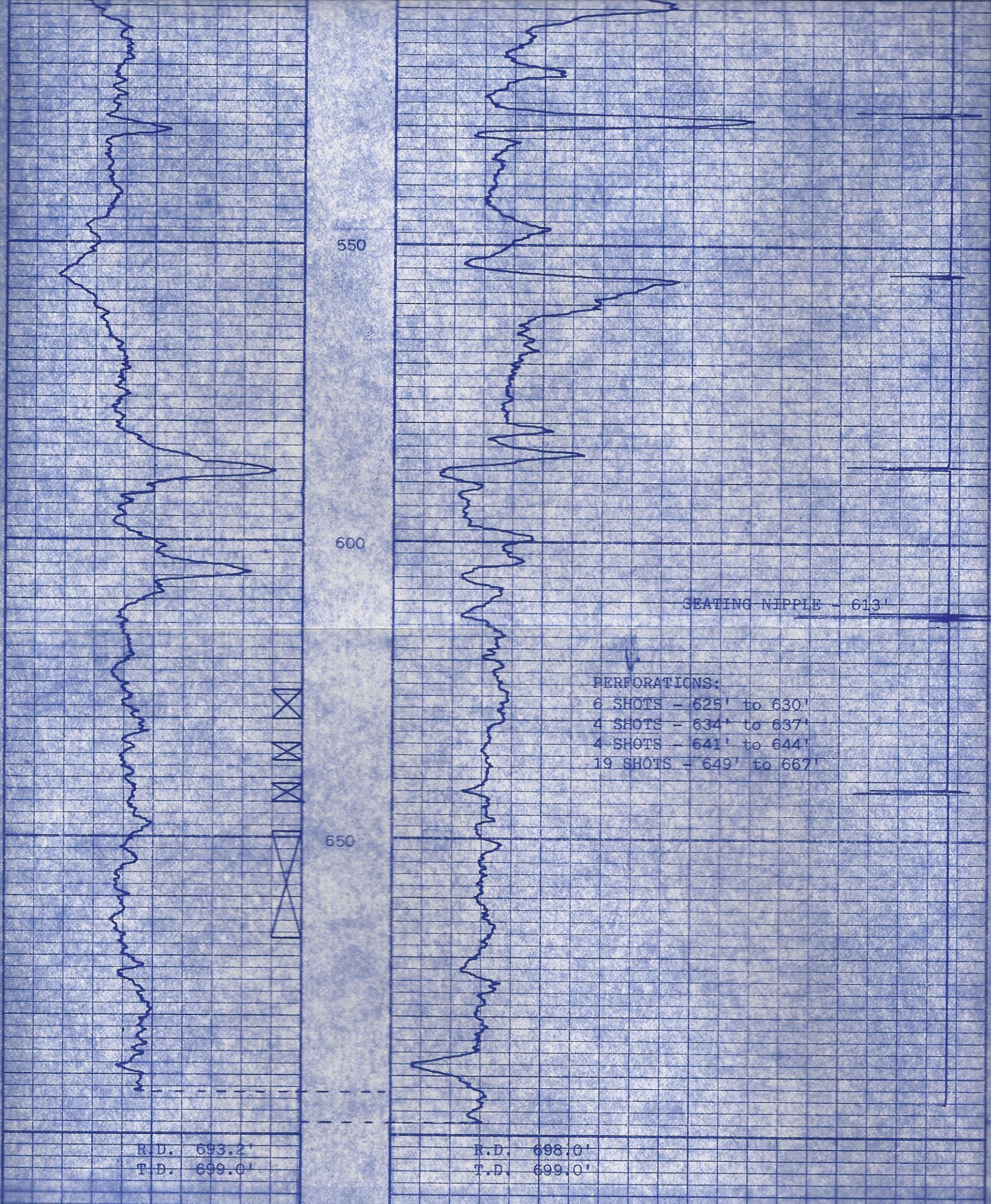
FOLD HERE THIS HEADING AND LOG CONFORMS TO API RP 33

EQUIPMENT DATA			
GAMMA RAY		NEUTRON	
RUN NO.	1 NW	RUN NO.	1 NW
TOOL MODEL NO.	9205	LOG TYPE	NEU/NEU
DIAMETER	1-11/16"	TOOL MODEL NO.	9205
DETECTOR MODEL NO.	95SC	DIAMETER	1-11/16"
TYPE	SCINT.	DETECTOR MODEL NO.	95HE
LENGTH	1"x4"	TYPE	He <sup>3</sup>
DISTANCE TO N. SOURCE	8.5'	LENGTH	1"x6"
		SOURCE MODEL NO.	AC
		SERIAL NO.	MRC415
		SPACING	13"
		TYPE	Am/Be <sup>6</sup>
		STRENGTH	6.7x10 <sup>6</sup>
GENERAL			
HOIST TRUCK NO.	106		
INSTRUMENT TRUCK NO.	106		
TOOL SERIAL NO.	1C		

LOGGING DATA										
RUN NO.	GENERAL DEPTHS		SPEED FT./MIN.	T.C. SEC.	SENS. SETTINGS	GAMMA RAY		NEUTRON		
	FROM	TO				ZERO DIV. L OR R	API G.R. UNITS PER LOG DIV.	T.C. SEC.	SENS. SETTINGS	ZERO DIV. L OR R
1	698.0'	258'	25	2.5	10-.0	2L	20	2.0	0-.35	4L

REFERENCE LITERATURE:

REMARKS



EWING B NO. 1-7

E.O.R. PETROLEUM COMPANY

ANDERSON COUNTY, KANSAS

JANUARY 28, 1983

13/21S/20E