

CORNISH

PHONE 431-9308
 WIRELINE SERVICES, INC.
 P.O. DRAWER H
 CHANUTE, KANSAS

RADIOACTIVITY LOG

FILING NO.

COMPANY E.O.R. PETROLEUM COMPANY

WELL EWING B NO. R-7 *R-5*

COUNTY ANDERSON STATE KANSAS

LOCATION: NE 1/4

SEC 13 TWP 21S RGE 20E

OTHER SERVICES:

PERMANENT DATUM: G.L. ELEV. _____ FT. ABOVE PERM. DATUM

LOG MEASURED FROM G.L. _____

DRILLING MEASURED FROM G.L. _____

ELEV. K.B. _____

D.F. _____

G.L. _____

DATE	1-28-83	1-28-83	1-28-83
RUN NO.	1 NW	1 NW	1 NW
TYPE LOG	GAMMA RAY	NEUTRON	PERFORATE
DEPTH—DRILLER	698.2'	698.2'	
DEPTH—LOGGER	692.4'	697.2'	
BOTTOM LOGGED INTERVAL	3'	8'	
TOP LOGGED INTERVAL			
TYPE FLUID IN HOLE	WATER	WATER	WATER
SALINITY, PPM CL			
DENSITY			
LEVEL	FULL	FULL	FULL
MAX. REC. TEMP., DEG F.			
OPERATING RIG TIME			
RECORDED BY	SANBORN, G.	SANBORN, G.	SANBORN, G.
WITNESSED BY	FRENCH, G.	FRENCH, G.	FRENCH, G.

BORE-HOLE RECORD

CASING RECORD

RUN NO.	BIT	FROM	TO	SIZE	WGT.	FROM	TO
				2 1/2"		0	T.D.

FOLD HERE

THIS HEADING AND LOG CONFORMS TO API RP 33

EQUIPMENT DATA

GAMMA RAY			NEUTRON		
RUN NO.	1 NW		RUN NO.	1 NW	
TOOL MODEL NO.	9205		LOG TYPE	NEU/NEU	
DIAMETER	1-11/16"		TOOL MODEL NO.	9205	
DETECTOR MODEL NO.	95SC		DIAMETER	1-11/16"	
TYPE	SCINT.		DETECTOR MODEL NO.	95HE	
LENGTH	1"x4"		TYPE	He ³	
DISTANCE TO N. SOURCE	8.5'		LENGTH	1"x6"	
			SOURCE MODEL NO.	AC	
			SERIAL NO.	MRC415	
			SPACING	13"	
			TYPE	Am/Be ⁶	
			STRENGTH	6.7x10 ⁶	

LOGGING DATA

RUN NO.	GENERAL		GAMMA RAY				NEUTRON				
	FROM	TO	SPEED FT./MIN.	T.C. SEC.	SENS. SETTINGS	ZERO DIV. L OR R	API G.R. UNITS PER LOG DIV.	T.C. SEC.	SENS. SETTINGS	ZERO DIV. L OR R	API N. UNITS PER LOG DIV.
1	697.2'	3'	25	2.5	10-.0	2L	20	2.0	0-.35	4L	

REFERENCE LITERATURE:

REMARKS

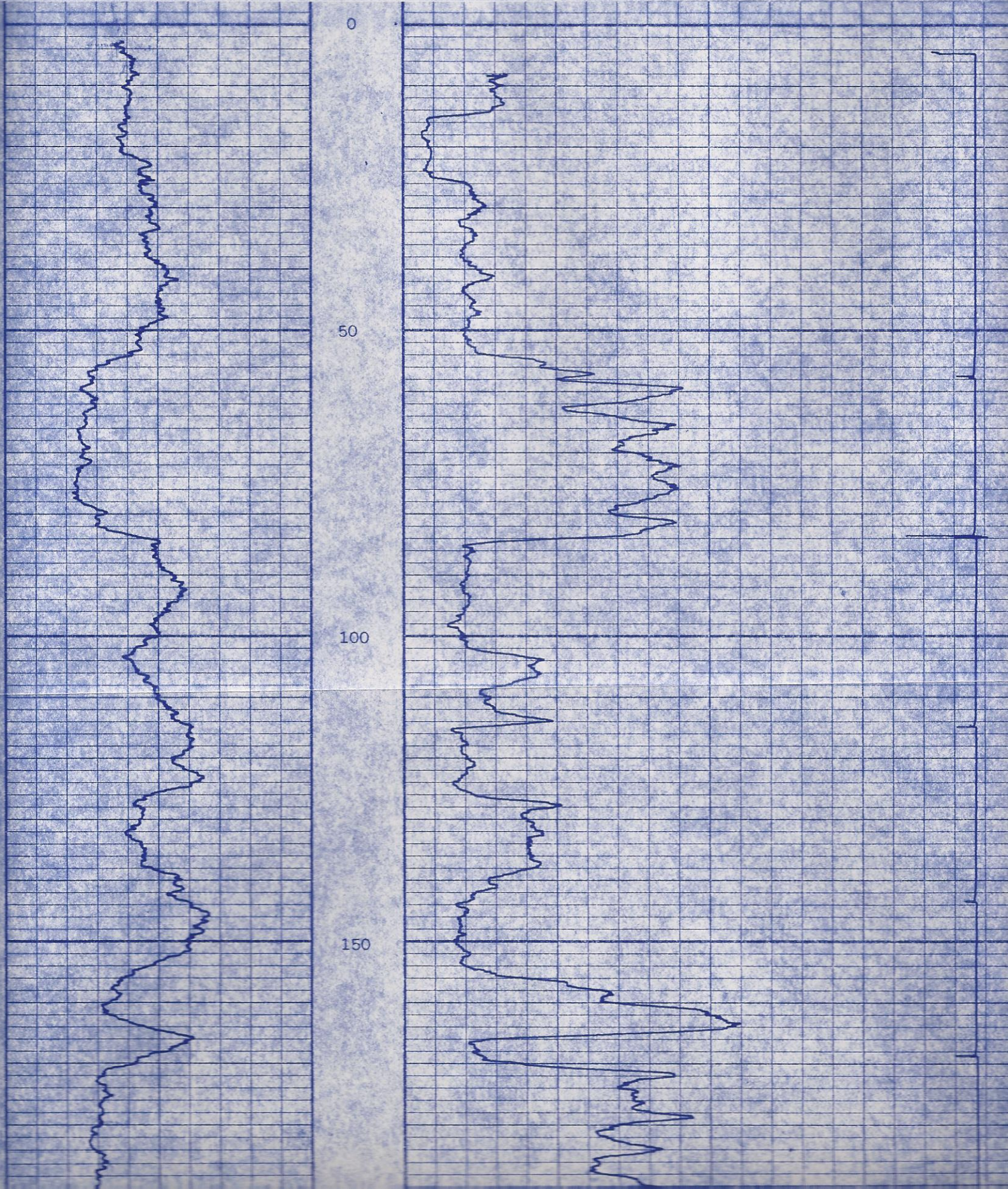
GAMMA RAY

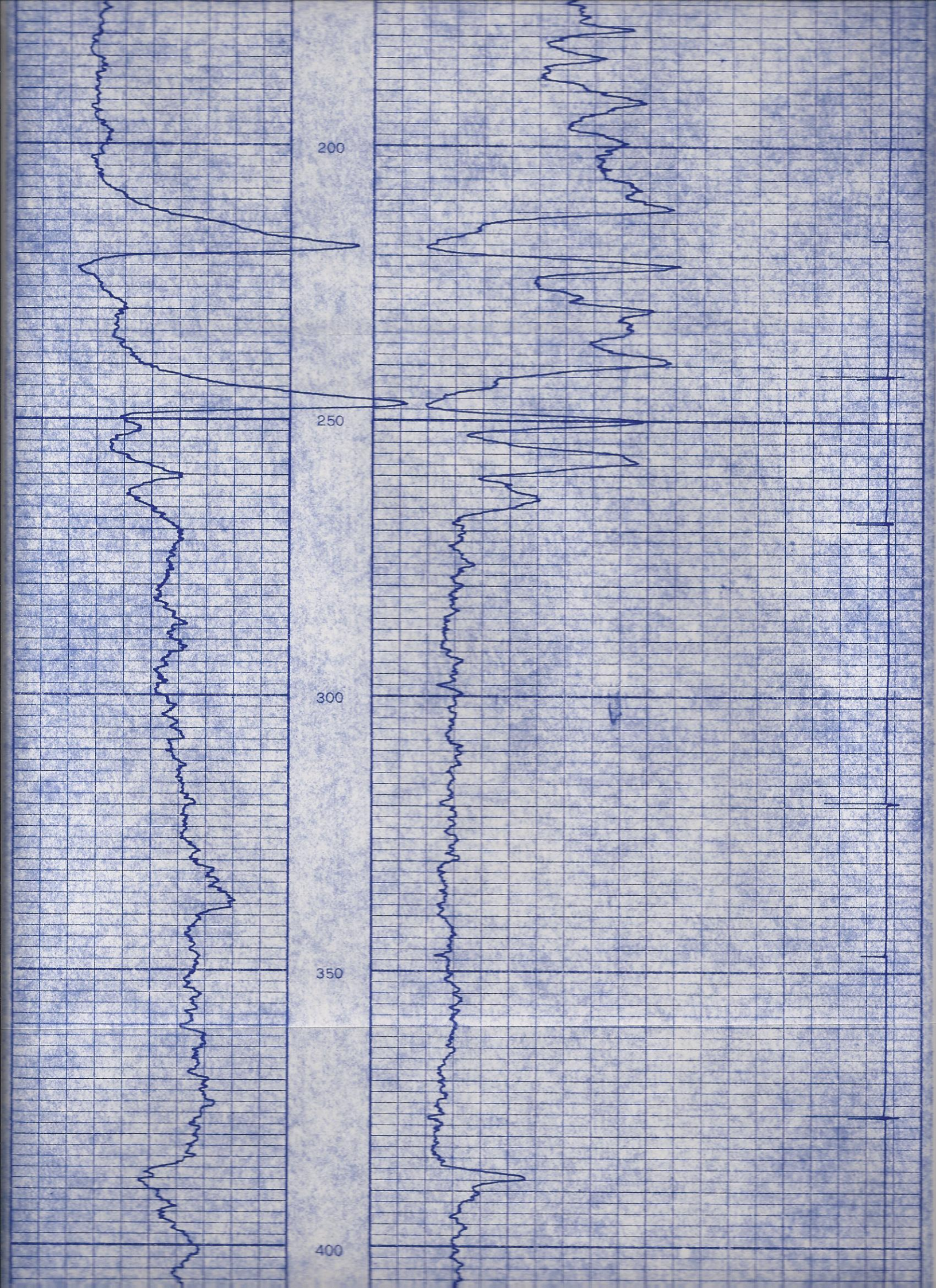
API UNITS

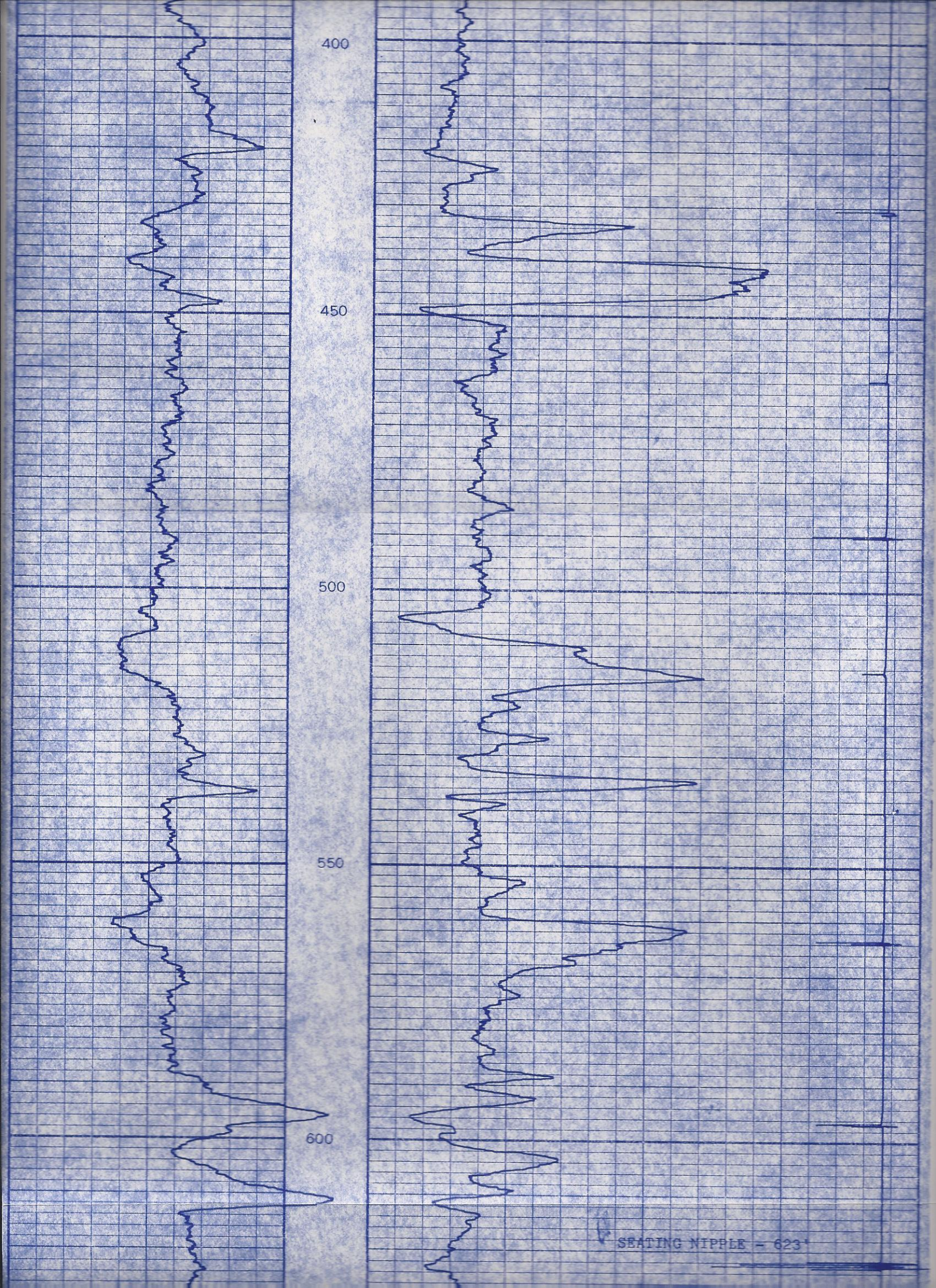
DEPTH
AND
CASING
COLLARS

NEUTRON

API UNITS







400

450

500

550

600

SEATING NIPPLE - 623

SEATING NIPPLE - 623'

PERFORATIONS:

31 SHOTS

3 SHOTS - 629' to 631'

6 SHOTS - 635' to 640'

7 SHOTS - 643' to 649'

15 SHOTS - 659' to 673'

650

R.D. 692.4'

T.D. 698.2'

R.D. 697.2'

T.D. 698.2'

EWING B NO. R-7

E.O.R. PETROLEUM COMPANY

ANDERSON COUNTY, KANSAS

JANUARY 28, 1983

13/21S/20E

R