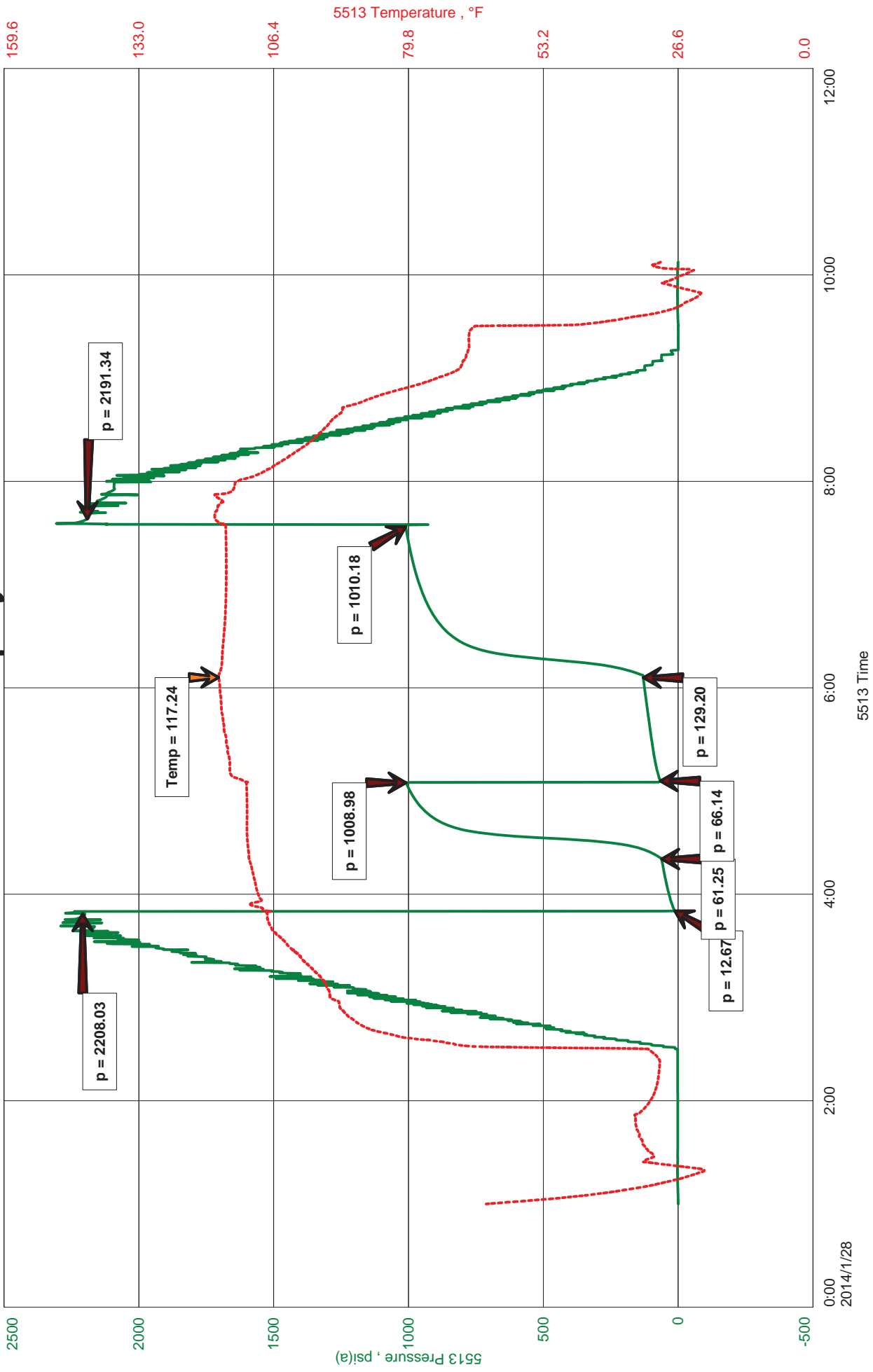


#1-10 Epley  
 Formation: Johnson-Atoka  
 Pool: Wildcat  
 Job Number: K084

Grand Mesa  
 DST #2 Johnson-Atoka 4548-4656  
 Start Test Date: 2014/01/28  
 Final Test Date: 2014/01/28

# #1-10 Epley





**JASON MCLEMORE**

**CELL # 620-617-0527**

**General Information**

<b>Company Name</b>	Grand Mesa	<b>Mike Reilly</b>	<b>Job Number</b>	K084
<b>Contact</b>		<b>#1-10 Epley</b>	<b>Representative</b>	Jason McLemore
<b>Well Name</b>		<b>DST #2 Johnson-Atoka 4548-4656</b>	<b>Well Operator</b>	Grand Mesa
<b>Unique Well ID</b>		<b>10-16s-33w-Scott</b>	<b>Prepared By</b>	Jason McLemore
<b>Surface Location</b>		<b>Wildcat</b>	<b>Qualified By</b>	John Goldsmith
<b>Field</b>		<b>Vertical</b>	<b>Test Unit</b>	#7
<b>Well Type</b>				

**Test Information**

<b>Test Type</b>	Drill Stem Test	<b>Representative</b>	Jason McLemore
<b>Formation</b>	Johnson-Atoka	<b>Well Operator</b>	Grand Mesa
<b>Well Fluid Type</b>	01 Oil	<b>Report Date</b>	2014/01/28
<b>Test Purpose (AEUB)</b>	Initial Test	<b>Prepared By</b>	Jason McLemore

<b>Start Test Date</b>	2014/01/28	<b>Start Test Time</b>	01:00:00
<b>Final Test Date</b>	2014/01/28	<b>Final Test Time</b>	10:10:00

**Test Results**

**RECOVERED:** 255 Gassy Oil Cut Mud, 35% Gas, 25% Oil, 40% Mud  
255 Total Fluid

465' Gas In Pipe

**TOOL SAMPLE:** Muddy Oil, 75% Oil, 25% Mud



**DIAMOND TESTING**  
P.O. Box 157  
**HOISINGTON, KANSAS 67544**  
(800) 542-7313  
**DRILL-STEM TEST TICKET**  
FILE: epley1dst2

TIME ON: 1:00 AM  
TIME OFF: 10:10 AM

Company Grand Mesa Lease & Well No. #1-10 Epley  
Contractor Duke #4 Charge to Grand Mesa  
Elevation 3035 KB Formation Johnson-Atoka Effective Pay \_\_\_\_\_ Ft. Ticket No. K084  
Date 1-28-14 Sec. 10 Twp. \_\_\_\_\_ 16 S Range \_\_\_\_\_ 33 W County \_\_\_\_\_ Scott State KANSAS  
Test Approved By John Goldsmith Diamond Representative Jason McLemore

Formation Test No. 2 Interval Tested from 4548 ft. to 4656 ft. Total Depth 4656 ft.  
Packer Depth 4543 ft. Size 6 3/4 in. Packer depth \_\_\_\_\_ ft. Size 6 3/4 in.  
Packer Depth 4548 ft. Size 6 3/4 in. Packer depth \_\_\_\_\_ ft. Size 6 3/4 in.

Depth of Selective Zone Set \_\_\_\_\_  
Top Recorder Depth (Inside) 4529 ft. Recorder Number 5513 Cap. 5000 P.S.I.  
Bottom Recorder Depth (Outside) 4530 ft. Recorder Number 5588 Cap. 6000 P.S.I.  
Below Straddle Recorder Depth \_\_\_\_\_ ft. Recorder Number \_\_\_\_\_ Cap. \_\_\_\_\_ P.S.I.

Mud Type Chemical Viscosity 53 Drill Collar Length 0 ft. I.D. 2 1/4 in.  
Weight 9.1 Water Loss 7.2 cc. Weight Pipe Length 0 ft. I.D. 2 7/8 in.  
Chlorides 4000 P.P.M. Drill Pipe Length 4515 ft. I.D. 3 1/2 in.  
Jars: Make STERLING Serial Number 6 Test Tool Length 33 ft. Tool Size 3 1/2-IF in.  
Did Well Flow? NO Reversed Out NO Anchor Length 108 ft. Size 4 1/2-FH in.  
Main Hole Size 7 7/8 Tool Joint Size 4 1/2 XH in. 93' DP in Anchor Surface Choke Size 1 in. Bottom Choke Size 5/8 in.

Blow: 1st Open: Good Blow, BOB in 18 Min., Blowback Built to 1"  
2nd Open: Good Blow, BOB in 8 Min., Blowback Built to 2"

Recovered 255 ft. of Gassy Oil Cut Mud, 35% Gas, 25% Oil, 40% Mud  
Recovered 255 ft. of Total Fluid  
Recovered \_\_\_\_\_ ft. of \_\_\_\_\_  
Recovered \_\_\_\_\_ ft. of 465' Gas In Pipe

Recovered _____ ft. of _____	Price Job
Recovered _____ ft. of _____	Other Charges
Remarks: <u>Tool Sample: Muddy Oil, 75% Oil, 25% Mud</u>	Insurance
_____	Total

Time Set Packer(s) 3:53 AM A.M. P.M. Time Started Off Bottom 7:38 AM A.M. P.M. Maximum Temperature 117

Initial Hydrostatic Pressure..... (A) 2208 P.S.I.  
Initial Flow Period..... Minutes 30 (B) 13 P.S.I. to (C) 61 P.S.I.  
Initial Closed In Period..... Minutes 45 (D) 1009 P.S.I.  
Final Flow Period..... Minutes 60 (E) 66 P.S.I. to (F) 129 P.S.I.  
Final Closed In Period..... Minutes 90 (G) 1010 P.S.I.  
Final Hydrostatic Pressure..... (H) 2191 P.S.I.

Diamond Testing shall not be liable for damages of any kind to the property or personnel of the one for whom a test is made or for any loss suffered or sustained, directly or indirectly, through the use of its equipment, or its statement or opinion concerning the result of any test. Tools lost or damaged in the hole shall be paid for at cost by the party for whom the test is made.