

# **Unit Petroleum**

**Reno County, Kansas  
Section 30 T25S-R10W  
Dye Trust 19 #1H**

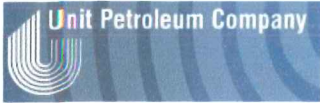
**OH**

**Survey: MWD**

## **Standard Survey Report**

**25 November, 2013**





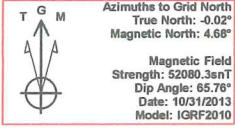
Unit Petroleum  
 Project: Reno County, Kansas  
 Site: Section 30 T255-R10W  
 Well: Dye Trust 19 #1H  
 Wellbore: OH  
 Design: Design #4  
 Lat: 37° 51' 11.176 N  
 Long: 98° 28' 9.143 W  
 Pad GL: 1798.00  
 KB: 14' KB @ 1812.00usft (UDI 331)



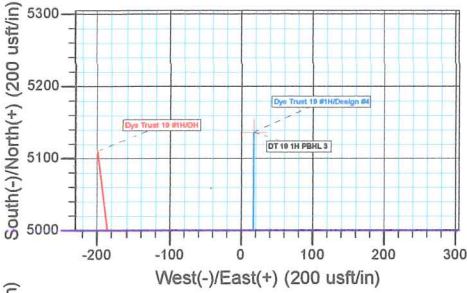
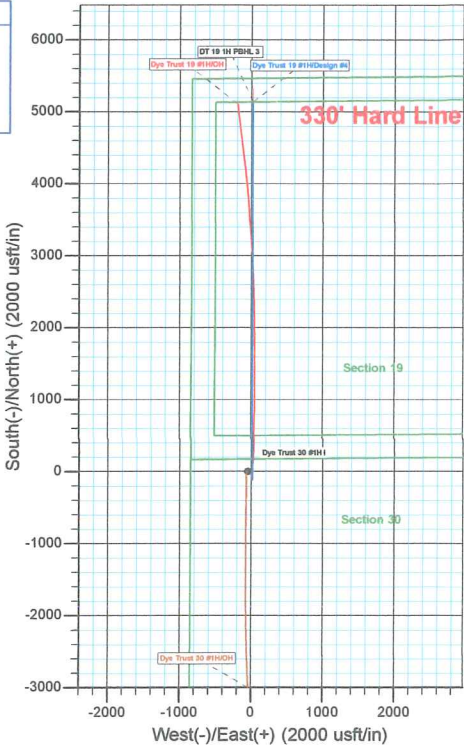
SECTION DETAILS										
MD	Inc	Azi	TVD	+N-S	+E-W	Dleg	TFace	Vsect		
0.00	0.00	0.00	0.00	0.00	0.00	0.00	0.00	0.00		
1500.00	0.00	0.00	1500.00	0.00	0.00	0.00	0.00	0.00		
1750.00	5.00	171.60	1749.88	-10.78	1.59	2.00	171.50	-10.78		
2850.00	5.00	171.60	2845.50	-105.63	15.60	0.00	0.00	-105.56		
3100.00	0.00	0.00	3095.18	-116.41	17.19	2.00	180.00	-116.33		
3367.31	0.00	0.00	3362.49	-116.41	17.19	0.00	0.00	-116.33		
3927.31	56.00	0.00	3937.49	138.15	17.19	10.00	0.00	138.23		
4077.31	56.00	0.00	3921.37	280.51	17.19	0.00	0.00	280.58		
4381.99	90.16	380.00	4003.00	528.85	17.18	12.00	-0.01	528.92		
8969.86	90.16	380.00	3990.00	5136.50	16.94	0.00	0.00	5136.52		

PROJECT DETAILS: Reno County, Kansas  
 Geodetic System: US State Plane 1983  
 Datum: North American Datum 1983  
 Ellipsoid: GRS 1980  
 Zone: Kansas Southern Zone  
 System Datum: Mean Sea Level

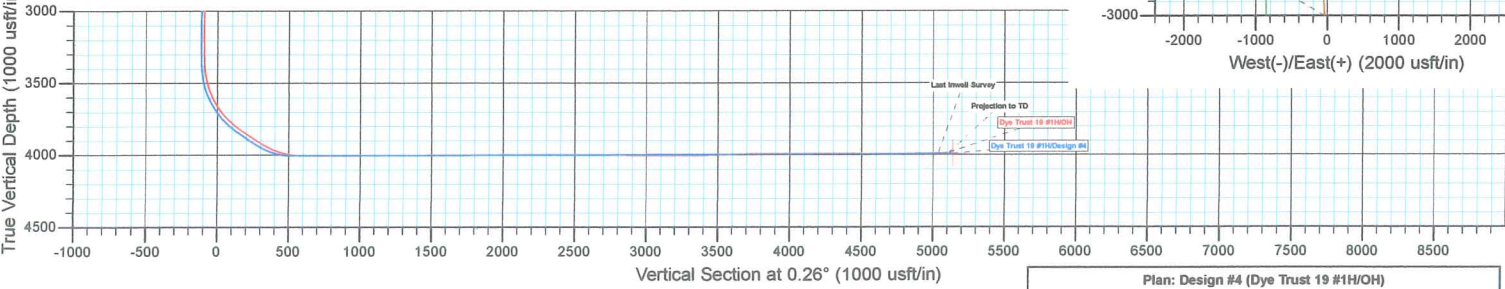
WELL DETAILS: Dye Trust 19 #1H						
+N-S	+E-W	Northing	Ground Level: Easting	1798.00 Latitude	Longitude	Slot
0.00	0.00	1744343.00	1321224.00	37° 51' 11.176 N	98° 28' 9.143 W	



WELLBORE TARGET DETAILS (LAT/LONG)						
Name	TVD	+N-S	+E-W	Latitude	Longitude	Shape Point
DT 19 1H PBHL 3	3990.00	5136.50	16.94	37° 52' 1.955 N	98° 28' 8.911 W	



NOTE: All Lease lines and Hard lines are estimates only and are subject to the customers' approval.



Plan: Design #4 (Dye Trust 19 #1H/OH)  
 Created By: Derek Stephens Date: 7:56, November 25 2013

<b>Company:</b>	Unit Petroleum	<b>Local Co-ordinate Reference:</b>	Well Dye Trust 19 #1H
<b>Project:</b>	Reno County, Kansas	<b>TVD Reference:</b>	14' KB @ 1812.00usft (UDI 331)
<b>Site:</b>	Section 30 T25S-R10W	<b>MD Reference:</b>	14' KB @ 1812.00usft (UDI 331)
<b>Well:</b>	Dye Trust 19 #1H	<b>North Reference:</b>	Grid
<b>Wellbore:</b>	OH	<b>Survey Calculation Method:</b>	Minimum Curvature
<b>Design:</b>	OH	<b>Database:</b>	EDM 5000.1 Single User Db

<b>Project</b>	Reno County, Kansas		
<b>Map System:</b>	US State Plane 1983	<b>System Datum:</b>	Mean Sea Level
<b>Geo Datum:</b>	North American Datum 1983		
<b>Map Zone:</b>	Kansas Southern Zone		Using geodetic scale factor

<b>Site</b>	Section 30 T25S-R10W				
<b>Site Position:</b>		<b>Northing:</b>	1,744,343.00 usft	<b>Latitude:</b>	37° 51' 11.176 N
<b>From:</b>	Map	<b>Easting:</b>	1,321,174.00 usft	<b>Longitude:</b>	98° 28' 9.767 W
<b>Position Uncertainty:</b>	0.00 usft	<b>Slot Radius:</b>	13-3/16 "	<b>Grid Convergence:</b>	0.02 °

<b>Well</b>	Dye Trust 19 #1H					
<b>Well Position</b>	+N/-S	0.00 usft	<b>Northing:</b>	1,744,343.00 usft	<b>Latitude:</b>	37° 51' 11.176 N
	+E/-W	0.00 usft	<b>Easting:</b>	1,321,224.00 usft	<b>Longitude:</b>	98° 28' 9.143 W
<b>Position Uncertainty</b>		0.00 usft	<b>Wellhead Elevation:</b>	usft	<b>Ground Level:</b>	1,798.00 usft

<b>Wellbore</b>	OH				
<b>Magnetics</b>	<b>Model Name</b>	<b>Sample Date</b>	<b>Declination (°)</b>	<b>Dip Angle (°)</b>	<b>Field Strength (nT)</b>
	IGRF2010	10/31/2013	4.70	65.76	52,080

<b>Design</b>	OH				
<b>Audit Notes:</b>					
<b>Version:</b>	1.0	<b>Phase:</b>	ACTUAL	<b>Tie On Depth:</b>	0.00
<b>Vertical Section:</b>	<b>Depth From (TVD) (usft)</b>	<b>+N/-S (usft)</b>	<b>+E/-W (usft)</b>	<b>Direction (°)</b>	
	0.00	0.00	0.00	0.26	

<b>Survey Program</b>	<b>Date</b>	11/25/2013			
<b>From (usft)</b>	<b>To (usft)</b>	<b>Survey (Wellbore)</b>	<b>Tool Name</b>	<b>Description</b>	
138.90	1,466.10	Gyro (OH)	CB-GYRO-MS	Camera based gyro multishot	
1,573.00	8,920.00	MWD (OH)	MWD	MWD - Standard	

<b>Survey</b>										
<b>Measured</b>	<b>Vertical</b>	<b>Vertical</b>	<b>Dogleg</b>	<b>Build</b>	<b>Turn</b>					
<b>Depth (usft)</b>	<b>Inclination (°)</b>	<b>Azimuth (°)</b>	<b>Depth (usft)</b>	<b>+N/-S (usft)</b>	<b>+E/-W (usft)</b>	<b>Section (usft)</b>	<b>Rate (°/100usft)</b>	<b>Rate (°/100usft)</b>	<b>Rate (°/100usft)</b>	
1,466.10	0.50	197.96	1,466.06	1.90	-4.99	1.88	0.00	0.00	0.00	0.00
1,573.00	0.90	167.60	1,572.96	0.64	-4.96	0.62	0.50	0.37	-28.40	
1,635.00	1.80	174.80	1,634.94	-0.80	-4.76	-0.83	1.47	1.45	11.61	
1,699.00	3.00	178.00	1,698.88	-3.48	-4.61	-3.50	1.89	1.88	5.00	
1,761.00	4.10	176.10	1,760.76	-7.31	-4.41	-7.33	1.78	1.77	-3.06	
1,824.00	4.40	176.40	1,823.59	-11.97	-4.10	-11.99	0.48	0.48	0.48	
1,919.00	4.50	176.20	1,918.30	-19.33	-3.63	-19.34	0.11	0.11	-0.21	
2,014.00	4.70	176.70	2,013.00	-26.93	-3.15	-26.95	0.21	0.21	0.53	
2,077.00	4.70	177.60	2,075.78	-32.09	-2.90	-32.10	0.12	0.00	1.43	
2,141.00	4.70	177.80	2,139.57	-37.33	-2.69	-37.34	0.03	0.00	0.31	





<b>Company:</b>	Unit Petroleum	<b>Local Co-ordinate Reference:</b>	Well Dye Trust 19 #1H
<b>Project:</b>	Reno County, Kansas	<b>TVD Reference:</b>	14' KB @ 1812.00usft (UDI 331)
<b>Site:</b>	Section 30 T25S-R10W	<b>MD Reference:</b>	14' KB @ 1812.00usft (UDI 331)
<b>Well:</b>	Dye Trust 19 #1H	<b>North Reference:</b>	Grid
<b>Wellbore:</b>	OH	<b>Survey Calculation Method:</b>	Minimum Curvature
<b>Design:</b>	OH	<b>Database:</b>	EDM 5000.1 Single User Db

Survey										
Measured Depth (usft)	Inclination (°)	Azimuth (°)	Vertical Depth (usft)	+N/-S (usft)	+E/-W (usft)	Vertical Section (usft)	Dogleg Rate (°/100usft)	Build Rate (°/100usft)	Turn Rate (°/100usft)	
2,204.00	4.70	177.60	2,202.36	-42.48	-2.48	-42.50	0.03	0.00	-0.32	
2,268.00	4.50	178.30	2,266.15	-47.61	-2.30	-47.62	0.32	-0.31	1.09	
2,331.00	4.40	178.10	2,328.96	-52.50	-2.14	-52.51	0.16	-0.16	-0.32	
2,395.00	4.50	179.00	2,392.77	-57.46	-2.02	-57.47	0.19	0.16	1.41	
2,458.00	4.40	179.00	2,455.58	-62.35	-1.93	-62.36	0.16	-0.16	0.00	
2,521.00	4.50	178.60	2,518.39	-67.24	-1.83	-67.25	0.17	0.16	-0.63	
2,584.00	4.40	178.90	2,581.20	-72.12	-1.72	-72.13	0.16	-0.16	0.48	
2,647.00	4.40	180.40	2,644.01	-76.96	-1.69	-76.96	0.18	0.00	2.38	
2,711.00	4.40	180.40	2,707.82	-81.87	-1.73	-81.87	0.00	0.00	0.00	
2,776.00	4.40	181.60	2,772.63	-86.85	-1.81	-86.86	0.14	0.00	1.85	
2,839.00	3.40	176.00	2,835.49	-91.13	-1.75	-91.14	1.70	-1.59	-8.89	
2,902.00	1.90	161.00	2,898.42	-93.98	-1.28	-93.99	2.60	-2.38	-23.81	
2,966.00	0.90	133.30	2,962.40	-95.33	-0.57	-95.33	1.84	-1.56	-43.28	
3,028.00	0.90	124.20	3,024.39	-95.94	0.19	-95.94	0.23	0.00	-14.68	
3,091.00	1.00	126.60	3,087.38	-96.55	1.04	-96.54	0.17	0.16	3.81	
3,155.00	0.50	53.00	3,151.38	-96.71	1.71	-96.70	1.54	-0.78	-115.00	
3,218.00	0.40	20.10	3,214.38	-96.34	2.00	-96.33	0.43	-0.16	-52.22	
3,281.00	0.50	30.40	3,277.37	-95.89	2.22	-95.88	0.20	0.16	16.35	
3,322.00	0.60	25.60	3,318.37	-95.55	2.40	-95.54	0.27	0.24	-11.71	
3,354.00	1.70	8.80	3,350.37	-94.93	2.55	-94.91	3.56	3.44	-52.50	
3,385.00	4.30	4.50	3,381.32	-93.31	2.71	-93.30	8.41	8.39	-13.87	
3,417.00	7.20	3.50	3,413.16	-90.12	2.93	-90.10	9.07	9.06	-3.13	
3,449.00	10.30	4.90	3,444.78	-85.26	3.29	-85.25	9.71	9.69	4.38	
3,481.00	13.20	5.40	3,476.11	-78.77	3.88	-78.75	9.07	9.06	1.56	
3,513.00	16.20	5.50	3,507.05	-70.69	4.65	-70.67	9.38	9.38	0.31	
3,544.00	19.00	5.20	3,536.60	-61.36	5.52	-61.33	9.04	9.03	-0.97	
3,575.00	22.20	4.90	3,565.61	-50.50	6.48	-50.47	10.33	10.32	-0.97	
3,608.00	25.20	4.90	3,595.83	-37.28	7.62	-37.25	9.09	9.09	0.00	
3,639.00	28.70	4.90	3,623.46	-23.28	8.82	-23.24	11.29	11.29	0.00	
3,671.00	32.20	4.20	3,651.04	-7.12	10.10	-7.08	10.99	10.94	-2.19	
3,703.00	35.70	3.40	3,677.58	10.71	11.28	10.76	11.03	10.94	-2.50	
3,735.00	38.90	3.00	3,703.03	30.07	12.36	30.12	10.03	10.00	-1.25	
3,766.00	42.00	3.00	3,726.62	50.15	13.41	50.21	10.00	10.00	0.00	
3,799.00	45.20	3.10	3,750.51	72.87	14.62	72.94	9.70	9.70	0.30	
3,831.00	48.30	3.50	3,772.44	96.14	15.96	96.21	9.73	9.69	1.25	
3,863.00	51.20	3.50	3,793.11	120.51	17.45	120.59	9.06	9.06	0.00	
3,893.00	54.10	3.70	3,811.31	144.31	18.95	144.40	9.68	9.67	0.67	
3,924.00	55.70	3.60	3,829.13	169.62	20.57	169.71	5.17	5.16	-0.32	
3,956.00	56.20	3.70	3,847.05	196.08	22.25	196.18	1.58	1.56	0.31	
3,988.00	56.10	3.80	3,864.88	222.60	23.99	222.71	0.41	-0.31	0.31	
4,020.00	56.20	3.80	3,882.70	249.12	25.75	249.23	0.31	0.31	0.00	
4,051.00	56.70	3.60	3,899.83	274.90	27.42	275.02	1.70	1.61	-0.65	
4,083.00	58.90	3.00	3,916.88	301.93	28.98	302.06	7.06	6.88	-1.88	



<b>Company:</b>	Unit Petroleum	<b>Local Co-ordinate Reference:</b>	Well Dye Trust 19 #1H
<b>Project:</b>	Reno County, Kansas	<b>TVD Reference:</b>	14' KB @ 1812.00usft (UDI 331)
<b>Site:</b>	Section 30 T25S-R10W	<b>MD Reference:</b>	14' KB @ 1812.00usft (UDI 331)
<b>Well:</b>	Dye Trust 19 #1H	<b>North Reference:</b>	Grid
<b>Wellbore:</b>	OH	<b>Survey Calculation Method:</b>	Minimum Curvature
<b>Design:</b>	OH	<b>Database:</b>	EDM 5000.1 Single User Db

**Survey**

Measured Depth (usft)	Inclination (°)	Azimuth (°)	Vertical Depth (usft)	+N/-S (usft)	+E/-W (usft)	Vertical Section (usft)	Dogleg Rate (°/100usft)	Build Rate (°/100usft)	Turn Rate (°/100usft)
4,114.00	61.80	2.50	3,932.22	328.84	30.27	328.97	9.46	9.35	-1.61
4,146.00	64.70	2.00	3,946.62	357.39	31.39	357.53	9.17	9.06	-1.56
4,177.00	67.40	2.00	3,959.20	385.70	32.38	385.84	8.71	8.71	0.00
4,209.00	70.00	1.70	3,970.83	415.50	33.34	415.64	8.17	8.13	-0.94
4,241.00	73.00	1.70	3,980.98	445.83	34.24	445.98	9.38	9.38	0.00
4,272.00	76.50	1.90	3,989.13	475.71	35.18	475.87	11.31	11.29	0.65
4,304.00	80.00	1.80	3,995.65	507.02	36.19	507.18	10.94	10.94	-0.31
4,323.00	82.60	1.80	3,998.52	525.79	36.78	525.95	13.68	13.68	0.00
4,409.00	88.50	1.60	4,005.19	611.46	39.32	611.63	6.86	6.86	-0.23
4,440.00	90.10	1.50	4,005.57	642.44	40.16	642.62	5.17	5.16	-0.32
4,502.00	91.10	1.40	4,004.92	704.42	41.73	704.60	1.62	1.61	-0.16
4,564.00	89.80	1.30	4,004.43	766.40	43.19	766.59	2.10	-2.10	-0.16
4,626.00	90.40	1.30	4,004.32	828.38	44.60	828.58	0.97	0.97	0.00
4,688.00	91.50	1.10	4,003.30	890.36	45.89	890.56	1.80	1.77	-0.32
4,749.00	89.50	0.60	4,002.76	951.35	46.80	951.55	3.38	-3.28	-0.82
4,811.00	90.40	0.50	4,002.82	1,013.34	47.39	1,013.55	1.46	1.45	-0.16
4,873.00	91.30	0.50	4,001.90	1,075.33	47.93	1,075.54	1.45	1.45	0.00
4,934.00	90.30	0.00	4,001.05	1,136.33	48.20	1,136.53	1.83	-1.64	-0.82
4,996.00	90.90	359.60	4,000.40	1,198.32	47.98	1,198.53	1.16	0.97	-0.65
5,058.00	89.30	359.10	4,000.29	1,260.32	47.28	1,260.52	2.70	-2.58	-0.81
5,119.00	90.20	359.20	4,000.56	1,321.31	46.38	1,321.50	1.48	1.48	0.16
5,179.00	91.60	359.30	3,999.61	1,381.29	45.59	1,381.49	2.34	2.33	0.17
5,241.00	89.40	0.00	3,999.07	1,443.29	45.21	1,443.48	3.72	-3.55	1.13
5,304.00	89.40	359.90	3,999.73	1,506.28	45.16	1,506.47	0.16	0.00	-0.16
5,365.00	90.10	359.90	4,000.00	1,567.28	45.05	1,567.47	1.15	1.15	0.00
5,426.00	90.80	0.10	3,999.52	1,628.28	45.05	1,628.47	1.19	1.15	0.33
5,488.00	90.40	359.90	3,998.87	1,690.28	45.05	1,690.46	0.72	-0.65	-0.32
5,550.00	90.90	0.20	3,998.17	1,752.27	45.10	1,752.46	0.94	0.81	0.48
5,612.00	89.20	359.80	3,998.11	1,814.27	45.10	1,814.45	2.82	-2.74	-0.65
5,673.00	89.50	359.40	3,998.80	1,875.26	44.68	1,875.45	0.82	0.49	-0.66
5,735.00	89.90	359.20	3,999.13	1,937.26	43.92	1,937.44	0.72	0.65	-0.32
5,796.00	90.50	359.10	3,998.92	1,998.25	43.02	1,998.43	1.00	0.98	-0.16
5,857.00	90.70	359.20	3,998.28	2,059.24	42.11	2,059.41	0.37	0.33	0.16
5,919.00	89.30	359.20	3,998.28	2,121.23	41.25	2,121.40	2.26	-2.26	0.00
5,982.00	90.10	358.90	3,998.61	2,184.22	40.20	2,184.38	1.36	1.27	-0.48
6,043.00	91.20	358.40	3,997.92	2,245.20	38.76	2,245.35	1.98	1.80	-0.82
6,105.00	90.10	358.40	3,997.21	2,307.17	37.03	2,307.32	1.77	-1.77	0.00
6,166.00	90.20	358.30	3,997.05	2,368.15	35.28	2,368.28	0.23	0.16	-0.16
6,228.00	89.40	357.80	3,997.27	2,430.11	33.17	2,430.23	1.52	-1.29	-0.81
6,289.00	89.40	357.90	3,997.91	2,491.06	30.88	2,491.18	0.16	0.00	0.16
6,351.00	89.70	358.00	3,998.39	2,553.02	28.66	2,553.12	0.51	0.48	0.16
6,413.00	89.70	358.20	3,998.72	2,614.99	26.61	2,615.08	0.32	0.00	0.32
6,474.00	89.60	357.60	3,999.09	2,675.94	24.37	2,676.03	1.00	-0.16	-0.98



<b>Company:</b>	Unit Petroleum	<b>Local Co-ordinate Reference:</b>	Well Dye Trust 19 #1H
<b>Project:</b>	Reno County, Kansas	<b>TVD Reference:</b>	14' KB @ 1812.00usft (UDI 331)
<b>Site:</b>	Section 30 T25S-R10W	<b>MD Reference:</b>	14' KB @ 1812.00usft (UDI 331)
<b>Well:</b>	Dye Trust 19 #1H	<b>North Reference:</b>	Grid
<b>Wellbore:</b>	OH	<b>Survey Calculation Method:</b>	Minimum Curvature
<b>Design:</b>	OH	<b>Database:</b>	EDM 5000.1 Single User Db

Survey										
Measured Depth (usft)	Inclination (°)	Azimuth (°)	Vertical Depth (usft)	+N/-S (usft)	+E/-W (usft)	Vertical Section (usft)	Dogleg Rate (°/100usft)	Build Rate (°/100usft)	Turn Rate (°/100usft)	
6,536.00	89.90	357.50	3,999.36	2,737.89	21.72	2,737.96	0.51	0.48	-0.16	
6,597.00	90.00	357.20	3,999.42	2,798.82	18.90	2,798.88	0.52	0.16	-0.49	
6,658.00	89.60	356.50	3,999.63	2,859.73	15.55	2,859.77	1.32	-0.66	-1.15	
6,720.00	89.70	357.00	4,000.01	2,921.63	12.03	2,921.65	0.82	0.16	0.81	
6,780.00	90.20	356.10	4,000.06	2,981.52	8.42	2,981.52	1.72	0.83	-1.50	
6,841.00	90.00	355.90	3,999.95	3,042.37	4.17	3,042.36	0.46	-0.33	-0.33	
6,903.00	89.40	356.20	4,000.28	3,104.22	-0.10	3,104.19	1.08	-0.97	0.48	
6,964.00	89.40	355.70	4,000.92	3,165.06	-4.41	3,165.01	0.82	0.00	-0.82	
7,026.00	88.80	355.50	4,001.89	3,226.87	-9.17	3,226.80	1.02	-0.97	-0.32	
7,087.00	90.00	355.90	4,002.53	3,287.70	-13.74	3,287.60	2.07	1.97	0.66	
7,149.00	91.00	356.20	4,001.99	3,349.55	-18.01	3,349.43	1.68	1.61	0.48	
7,210.00	91.90	356.00	4,000.44	3,410.39	-22.16	3,410.25	1.51	1.48	-0.33	
7,271.00	92.70	356.10	3,998.00	3,471.19	-26.36	3,471.04	1.32	1.31	0.16	
7,333.00	91.90	356.30	3,995.51	3,533.00	-30.46	3,532.83	1.33	-1.29	0.32	
7,395.00	90.70	356.70	3,994.10	3,594.87	-34.25	3,594.68	2.04	-1.94	0.65	
7,456.00	90.70	356.70	3,993.36	3,655.77	-37.76	3,655.56	0.00	0.00	0.00	
7,518.00	90.80	355.90	3,992.54	3,717.63	-41.76	3,717.40	1.30	0.16	-1.29	
7,580.00	91.50	355.50	3,991.30	3,779.44	-46.41	3,779.19	1.30	1.13	-0.65	
7,642.00	89.30	355.20	3,990.87	3,841.23	-51.43	3,840.96	3.58	-3.55	-0.48	
7,704.00	89.30	354.80	3,991.63	3,902.99	-56.84	3,902.70	0.65	0.00	-0.65	
7,765.00	89.80	354.50	3,992.10	3,963.73	-62.52	3,963.40	0.96	0.82	-0.49	
7,827.00	89.50	354.20	3,992.48	4,025.42	-68.63	4,025.07	0.68	-0.48	-0.48	
7,889.00	89.70	354.00	3,992.92	4,087.09	-75.00	4,086.71	0.46	0.32	-0.32	
7,950.00	90.20	353.30	3,992.97	4,147.72	-81.75	4,147.30	1.41	0.82	-1.15	
8,012.00	90.40	353.30	3,992.64	4,209.29	-88.98	4,208.85	0.32	0.32	0.00	
8,074.00	91.10	353.30	3,991.83	4,270.86	-96.21	4,270.38	1.13	1.13	0.00	
8,135.00	90.00	353.10	3,991.25	4,331.43	-103.44	4,330.92	1.83	-1.80	-0.33	
8,197.00	89.70	353.10	3,991.41	4,392.98	-110.88	4,392.43	0.48	-0.48	0.00	
8,259.00	90.20	353.00	3,991.46	4,454.53	-118.39	4,453.94	0.82	0.81	-0.16	
8,320.00	89.90	352.90	3,991.41	4,515.07	-125.87	4,514.45	0.52	-0.49	-0.16	
8,382.00	89.40	352.40	3,991.79	4,576.55	-133.80	4,575.90	1.14	-0.81	-0.81	
8,444.00	89.40	352.50	3,992.44	4,638.01	-141.95	4,637.32	0.16	0.00	0.16	
8,506.00	89.60	352.80	3,992.98	4,699.50	-149.88	4,698.77	0.58	0.32	0.48	
8,568.00	89.90	352.90	3,993.25	4,761.02	-157.60	4,760.25	0.51	0.48	0.16	
8,629.00	90.60	353.30	3,992.98	4,821.58	-164.93	4,820.78	1.32	1.15	0.66	
8,691.00	90.60	353.30	3,992.33	4,883.15	-172.16	4,882.32	0.00	0.00	0.00	
8,753.00	91.30	353.20	3,991.31	4,944.71	-179.45	4,943.85	1.14	1.13	-0.16	
8,814.00	92.00	353.30	3,989.55	5,005.26	-186.61	5,004.36	1.16	1.15	0.16	
8,845.00	92.20	353.00	3,988.41	5,036.02	-190.31	5,035.10	1.16	0.65	-0.97	
<b>Last Inwell Survey</b>										
8,919.36	92.20	353.00	3,985.56	5,109.77	-199.36	5,108.81	0.00	0.00	0.00	
<b>DT 19 1H PBHL 3</b>										
8,920.00	92.20	353.00	3,985.54	5,110.41	-199.44	5,109.45	0.00	0.00	0.00	
<b>Projection to TD</b>										



<b>Company:</b>	Unit Petroleum	<b>Local Co-ordinate Reference:</b>	Well Dye Trust 19 #1H
<b>Project:</b>	Reno County, Kansas	<b>TVD Reference:</b>	14' KB @ 1812.00usft (UDI 331)
<b>Site:</b>	Section 30 T25S-R10W	<b>MD Reference:</b>	14' KB @ 1812.00usft (UDI 331)
<b>Well:</b>	Dye Trust 19 #1H	<b>North Reference:</b>	Grid
<b>Wellbore:</b>	OH	<b>Survey Calculation Method:</b>	Minimum Curvature
<b>Design:</b>	OH	<b>Database:</b>	EDM 5000.1 Single User Db

Measured Depth (usft)	Inclination (°)	Azimuth (°)	Vertical Depth (usft)	+N/-S (usft)	+E/-W (usft)	Vertical Section (usft)	Dogleg Rate (°/100usft)	Build Rate (°/100usft)	Turn Rate (°/100usft)

Measured Depth (usft)	Vertical Depth (usft)	Local Coordinates		Comment
		+N/-S (usft)	+E/-W (usft)	
8,845.00	3,988.41	5,036.02	-190.31	Last Inwell Survey
8,920.00	3,985.54	5,110.41	-199.44	Projection to TD

Checked By: \_\_\_\_\_ Approved By: \_\_\_\_\_ Date: \_\_\_\_\_