



Scale 1:240 Imperial

Well Name: Fisher Farms #1-15
 Surface Location: 2304' FSL _1235' FEL Sec 15 - 25S- 14W
 Bottom Location:
 API: 15-185-23848-00-00
 License Number:
 Spud Date: 1/4/2014 Time: 1:30 PM
 Region: Stafford County
 Drilling Completed: 1/13/2014 Time: 3:55 PM
 Surface Coordinates: Y = 440252 & X = 1900967
 Bottom Hole Coordinates: Y = & X =
 Ground Elevation: 1966.00ft
 K.B. Elevation: 1979.00ft
 Logged Interval: 3100.00ft To: 4420.00ft
 Total Depth: 4420.00ft
 Formation: Mississippian Chert
 Drilling Fluid Type: Chemical/Fresh Water Gel

OPERATOR

Company: Shelby Resources, LLC
 Address: 445 Union Blvd, Suite 208
 Lakewood, CO 80228
 Contact Geologist: Janine Sturdavant
 Contact Phone Nbr: 303-907-2209 / 720-274-4682
 Well Name: Fisher Farms #1-15
 Location: 2304' FSL _1235' FEL Sec 15 - 25S- 14W API: 15-185-23848-00-00
 Pool: Field: Jordan
 State: Kansas Country: USA

LOGGED BY



Company: Shelby Resources, LLC
 Address: 445 UNION BLVD. Suite 208
 LAKEWOOD, CO. 80228
 Phone Nbr: 203-671-6034
 Logged By: Geologist Name: Jeremy Schwartz

NOTES

The Shelby Resources, LLC Fisher Farms #1-15 was drilled to a total depth of 4420', bottoming in the Arbuckle. A TookeDaq gas detector was employed in the drilling of said well.

Three DST's were conducted throughout the Lansing, Mississippian, and Viola zones. The DST reports can be found at the bottom of this log.

Due to the DST results, sample shows, gas kicks, and log analysis it was determined by all parties involved to plug and abandon the well. The dry samples were saved and will be available for further review at the Kansas Geological Society Well Sample Library, located in Wichita, KS.

Respectfully Submitted,
Jeremy Schwartz
Geologist

SURFACE CO-ORDINATES

Well Type: Vertical

Longitude: N/S Co-ord: Y = 440252
 E/W Co-ord: X = 1900967

Latitude:

CONTRACTOR

Contractor: Sterling Drilling Co
 Rig #: 5
 Rig Type: mud rotary
 Spud Date: 1/4/2014
 TD Date: 1/13/2014
 Rig Release:
 Time: 1:30 PM
 Time: 3:55 PM
 Time:

ELEVATIONS

K.B. Elevation: 1979.00ft
 K.B. to Ground: 13.00ft
 Ground Elevation: 1966.00ft

| DATE | DEPTH | ACTIVITY |
|----------------------------|-------|--|
| Thursday, January 09, 2014 | 3225' | Geologist Jeremy Schwartz on location @ 1130 hrs, DRLG ahead through Heebner, Toronto, Douglas Shale, Brown Lime, Strap out, Drop Survey, Bit Trip, swap out PDC |
| | 3685' | for traditional Tri-Cone Button bit |
| Friday, January 10, 2014 | 3685' | DRLG Ahead through Lansing Kansas City, stop to CFS in "B" zone due to gas kick, DRLG ahead through LKC, CFS in LKC "H", Show/gas kick warrants test, OOH for |
| | 3863' | short trip, CTCH 1hour, then OOH to conduct DST #1 |
| Saturday, January 11, 2014 | 3863' | DRLG ahead through LKC "J", BKC, Marmaton, Mississippian, Conduct DST #2 in Miss. |
| Sunday, January 12, 2014 | 4180' | DRLG ahead through Viola, Conduct DST #3 in Viola |
| Monday, January 13, 2014 | 4280' | DRLG ahead through Simpson Shale, Arbuckle, No shows in ARB, DRLG ahead to |
| | 4420' | TD @ 4420', TD reached @ 1535hrs, Conduct Logging Operations |
| Tuesday, January 14, 2014 | 4420' | Logging Operations complete @ 0245hrs |
| | | Geologist Jeremy Schwartz off location @ 0330hrs |

| | |
|------------------|----------------------------------|
| CLIENT: | SHELBY RESOURCES, LLC |
| WELL NAME: | FISHER FARMS #1-15 |
| LEGAL: | 2304' PSL & 1236' FEL 15-25S-14W |
| COUNTY: | STAFFORD COUNTY, KS |
| API: | 15-185-23848-00-00 |
| DRLG CONTRACTOR: | STERLING DRILLING CO. |
| RIG #: | 5 |
| DOGHOUSE #: | 620-388-5433 |
| TOOLPUSHER: | ALAN LOFTIS |
| CELL #: | 620-388-2736 |

| | | D&A | | | | ● | | | | ● | | | | | | | | | | | | |
|---------------|-------|--------------------|-------|-------------|-------|-----------------------|-------|-------|-------|------------------------|-------|------------|-------|------------------------|-------|-------|------|-------|---|-----|---|-----|
| | | J.A. ALLISON | | | | SHELBY RESOURCES, LLC | | | | SHELBY RESOURCES, LLC | | | | | | | | | | | | |
| | | FISHER FARMS #1-15 | | | | FOX #1 | | | | FISHER #1-15 | | | | FISHER #2-15 | | | | | | | | |
| | | SW-NW-NE-SE | | | | SW-SE-NE 15-25S-14W | | | | SW-NW-SE-NE 15-25S-14W | | | | NW-NE-SE-NE 15-25S-14W | | | | | | | | |
| | | KB | | 1979 | | KB | | 1978 | | KB | | 1974 | | KB | | 1974 | | | | | | |
| | | LOG TOPS | | SAMPLE TOPS | | COMP. CARD | | LOG | | SMPL. | | COMP. CARD | | LOG | | SMPL. | | | | | | |
| FORMATION | DEPTH | DATUM | DEPTH | DATUM | DEPTH | DATUM | CORR. | CORR. | DEPTH | DATUM | CORR. | CORR. | DEPTH | DATUM | CORR. | CORR. | | | | | | |
| ANHYDRITE TOP | 883 | 1096 | 883 | 1096 | 871 | 1107 | - | 11 | - | 11 | 862 | 1112 | - | 16 | - | 16 | 870 | 1104 | - | 8 | - | 8 |
| BASE | 900 | 1079 | 893 | 1086 | 890 | 1088 | - | 9 | - | 2 | | | | | | | | | | | | |
| HEEBNER SHALE | 3530 | -1551 | 3530 | -1551 | 3499 | -1521 | - | 30 | - | 30 | 3494 | -1520 | - | 31 | - | 31 | 3494 | -1520 | - | 31 | - | 31 |
| TORONTO | 3552 | -1573 | 3554 | -1575 | 3522 | -1544 | - | 29 | - | 31 | 3514 | -1540 | - | 33 | - | 35 | 3512 | -1538 | - | 35 | - | 37 |
| DOUGLAS SHALE | 3574 | -1595 | 3573 | -1594 | 3543 | -1565 | - | 30 | - | 29 | 3532 | -1558 | - | 37 | - | 36 | 3534 | -1560 | - | 35 | - | 34 |
| BROWN LIME | 3682 | -1703 | 3680 | -1701 | 3650 | -1672 | - | 31 | - | 29 | 3642 | -1668 | - | 35 | - | 33 | 3642 | -1668 | - | 35 | - | 33 |
| LKC | 3708 | -1729 | 3708 | -1729 | 3677 | -1699 | - | 30 | - | 30 | 3670 | -1696 | - | 33 | - | 33 | 3664 | -1690 | - | 39 | - | 39 |
| LKC B | 3734 | -1755 | 3734 | -1755 | 3702 | -1724 | - | 31 | - | 31 | 3691 | -1717 | - | 38 | - | 38 | 3690 | -1716 | - | 39 | - | 39 |
| LKC H | 3848 | -1869 | 3846 | -1867 | 3814 | -1836 | - | 33 | - | 31 | 3802 | -1828 | - | 41 | - | 39 | 3806 | -1832 | - | 37 | - | 35 |
| LKC J | 3887 | -1908 | 3884 | -1905 | 3852 | -1874 | - | 34 | - | 31 | 3839 | -1865 | - | 43 | - | 40 | | | | | | |
| BKC | 4012 | -2033 | 4015 | -2036 | 3976 | -1998 | - | 35 | - | 38 | 3962 | -1988 | - | 45 | - | 48 | 3966 | -1992 | - | 41 | - | 44 |
| MARMATON | 4034 | -2055 | 4032 | -2053 | 4008 | -2030 | - | 25 | - | 23 | 3982 | -2008 | - | 47 | - | 45 | 3982 | -2008 | - | 47 | - | 45 |
| MISSISSIPPIAN | 4134 | -2155 | 4134 | -2155 | 4078 | -2100 | - | 55 | - | 55 | 4064 | -2090 | - | 65 | - | 65 | 4059 | -2085 | - | 70 | - | 70 |
| VIOLA | 4220 | -2241 | 4225 | -2246 | 4167 | -2189 | - | 52 | - | 57 | 4154 | -2180 | - | 61 | - | 66 | 4141 | -2167 | - | 74 | - | 79 |
| SIMPSON SHALE | 4284 | -2305 | 4282 | -2303 | 4232 | -2254 | - | 51 | - | 49 | 4223 | -2249 | - | 56 | - | 54 | | | | | | |
| SIMPSON SAND | 4290 | -2311 | | | | | | | | | 4231 | -2257 | - | 54 | | | | | | | | |
| ARBUCKLE | 4329 | -2350 | 4330 | -2351 | 4272 | -2294 | - | 56 | - | 57 | 4257 | -2283 | - | 67 | - | 68 | | | | | | |
| RTD | | | 4420 | -2441 | 4295 | -2317 | - | | - | 124 | 4325 | -2351 | - | | - | 90 | 4200 | -2226 | - | | - | 215 |
| LTD | 4421 | -2442 | | | 4290 | -2312 | - | 130 | | | 4326 | -2352 | - | 90 | | | 4203 | -2229 | - | 213 | | |

| PROGNOSIS | | TESTED | | | | TESTED | | | | TESTED | | | | |
|---------------|------|--------|-----------------------------|--|--|--------|----------------------------|--|--|--------|--------------------------------|--|--|--|
| ANHYDRITE TOP | 879 | 1100 | DST #1 (3695-3775) LKC A-F | | | | DST #1 (3672-3755) LKC A-F | | | | DST #1 (3724-3752) LKC F | | | |
| HEEBNER SHALE | 3548 | -1569 | 30-45-60-60 | | | | 10-45-60-90 | | | | 10-45-45-90 | | | |
| LANSING | 3724 | -1745 | 120' SGCM w/slight show Oil | | | | IF: Strong blow BOB 1.5Min | | | | IF: Strong blow BOB 1Min 10Sec | | | |
| MISS. CHERT | 4129 | -2150 | 300' SW | | | | FF: Fair blow BOB 10Min | | | | BB 4" | | | |
| | | | SIP: 1220# - 1199# | | | | Weak surface BR | | | | FF: Strong Blow BOB <1Min | | | |

| | | |
|----------|------|-------|
| ARBUCKLE | 4349 | -2370 |
| RTD | 4420 | -2441 |

DST #2 (3810-3830) LKC H
30-45-30-60
420' GIP
90' GCM w/slight show Oil
SIP: 137# - 148#

DST #3 (3830-3876) LKC I-J
30-45-45-60
150' M w/slight show Oil
SIP: 1115# - 1105#

DST #4 (4053-4074) Miss
30-45-60-90
30'M
SIP: 275# - 339#

DST #5 (4074-4094) Miss
30-45-30-45
MISRUN

DST #6 (4087-4104)
30-45-45-60
GTS in FSI
185' O&GCM (60%M, 20%O, 20%G)
SIP: 690# - 466#

795' GIP, 35'M, 60'M w/slight trace Oil
65' GSOCM, 65' GSOWCM
SIP: 1116# - 1101#

DST #2 (3793-3816) LKC H
10-45-60-142
IF: Strong blow BOB 30Sec
BB BOB
FF: Strong blow BOB Instantly, GTS 6Min
Weak surface BB built to 9'
3520' GIP, 35'O, 30'MCO, 125'HOCM
60' GSMCO
SIP: 1030# - 1023#

DST #3 (3822-3865) LKC I-J
10-45-60-150
IF: Strong blow BOB 30Sec
Weak surface BB
FF: Strong blow BOB Instantly, GTS 4Min
*Never completely bled off, after 33Min,
surface BB built to BOB 5Min
3385' GIP, 80'O, 20'GVSMCO,
65'GVSMCO, 190'GSWSMCO,
60' GSOSMCW
SIP: 1146# - 1135#

GTS 22Min
20' GOCM (93%M, 6%G, 1%O)
120' GW & HOCM
245' O & MCW
SIP: 1142# - 1131#

DST #2 (3800-3816) LKC H
10-45-45-90
IF: Weak blow built to BOB 3Min
FF: Strong blow BOB Instantly
1565' GIP, 55' GSOCM
SIP: 891# - 964#

DST #3 (3834-3865) LKC J
10-45-60-90
IF: Weak blow built to BOB 35Min
Very weak surface BB
FF: Weak blow built to BOB 7Min
Weak surface BB built to 4In
1015' GIP, 75' GHOWCM,
175'SMCW w/slight trace oil, 10'M

DST #4 (3878-3900) LKC K
10-45-45-90
IF: Strong blow BOB 45Sec
FF: Strong Blow BOB Instantly
GTS 26Min
3660' GIP, 1'O, 10'O'CM, 60'GSOCM,
60' MCO, 65'VSMCO
SIP: 932# - 947#

DST #5 (4040-4082) Miss
10-45-70-90
IF: Strong blow BOB Instantly
GTS 2Min
FF: Strong blow BOB Instantly
GTS Instantly (weak surface BB after bled)
3865' GIP, 150'M
SIP: 1309# - 1279#

ROCK TYPES

| | | | | |
|----------|----------|------------|------------|------------|
| Cht | Chtcongl | Lmst fw<7 | shale, gry | shale, red |
| Cht vari | Dolprim | shale, grn | Carbon Sh | |

ACCESSORIES

FOSSIL

- ∩ Bioclastic or Fragmental
- F Fossils < 20%

STRINGER

- ~ Chert
- ▨ Dolomite
- ▨ Limestone
- ▨ Sandstone
- ▨ Siltstone
- ▨ Shale
- ▨ green shale
- ▨ red shale

TEXTURE

- C Chalky

OTHER SYMBOLS

MISC

- Daily Report
- Digital Photo
- Document
- Folder
- Link
- Vertical Log File
- Horizontal Log File
- Core Log File
- Drill Cuttings Rpt

Oil Show

- Good Show
- Fair Show
- Poor show
- Spotted or Trace
- Questionable Stn
- Dead Oil Stn
- Fluorescence
- * Gas

DST

- DST Int
- DST alt

| | | | | | | |
|----------------|--|-----------|-----|-----|--|-------------------|
| Curve Track #1 | | | | | | TG, C1 - C5 |
| ROP (min/ft) | | Intervals | Log | Now | | Total Gas (units) |
| Gamma (API) | | | | | | C1 (units) |
| Cal (in) | | | | | | C2 (units) |
| | | | | | | C3 (units) |

Depth
DST

Lithol

OIL ST

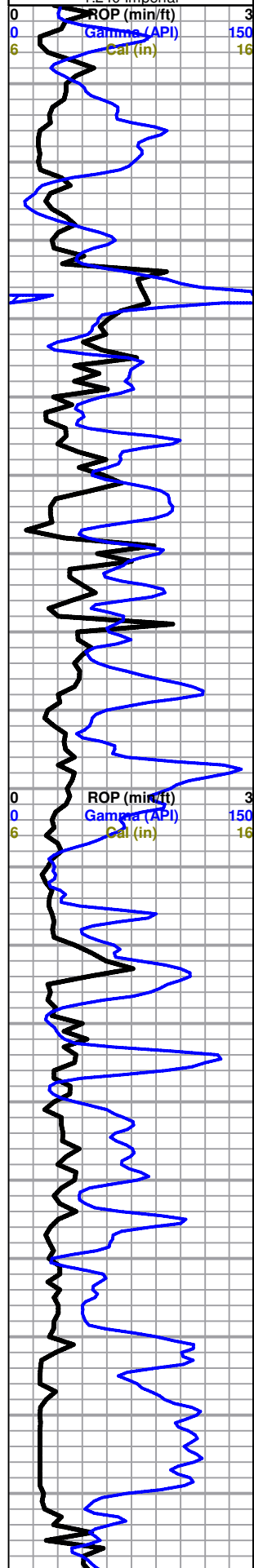
Geological Descriptions

C4 (units)

—

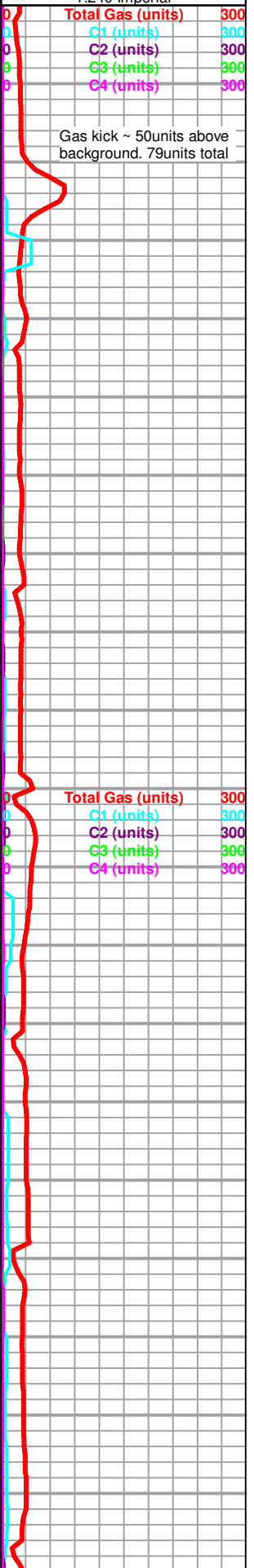
Cored Interval
DST Interval

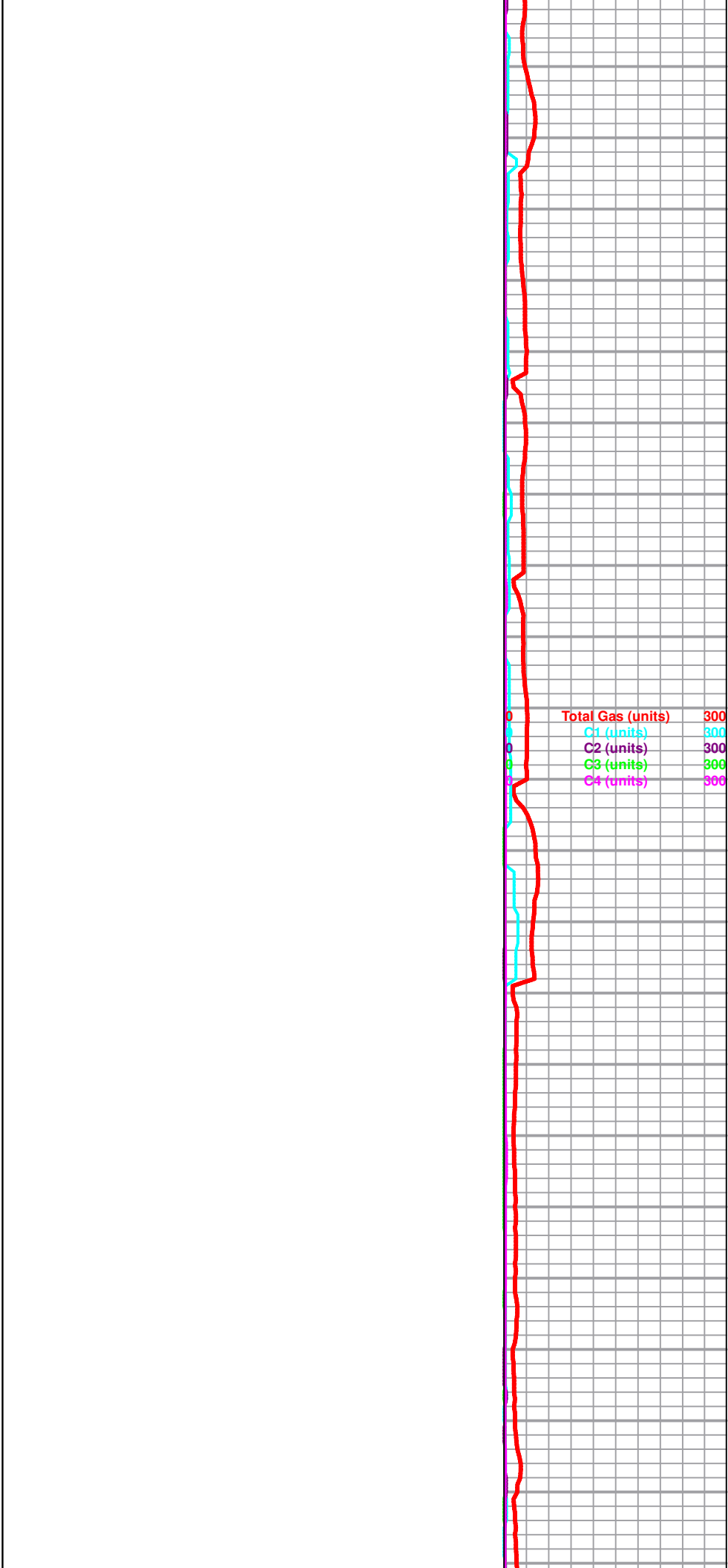
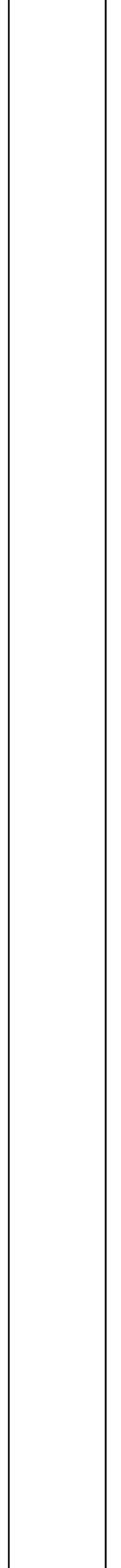
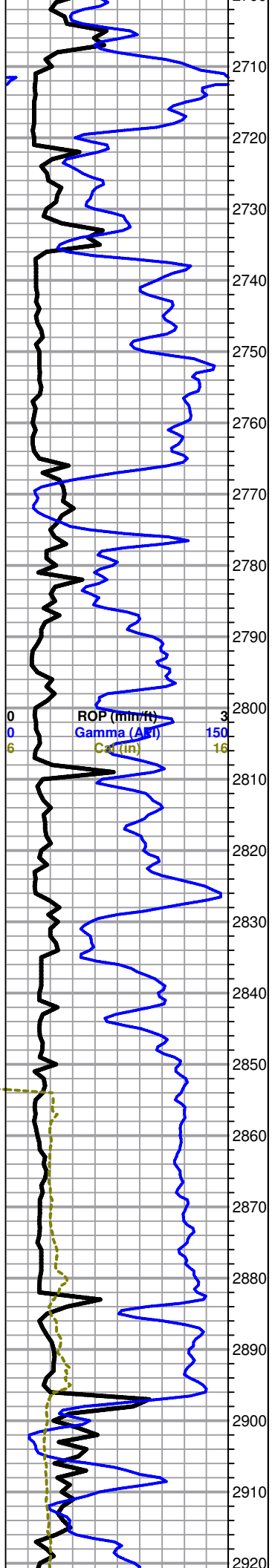
1:240 Imperial

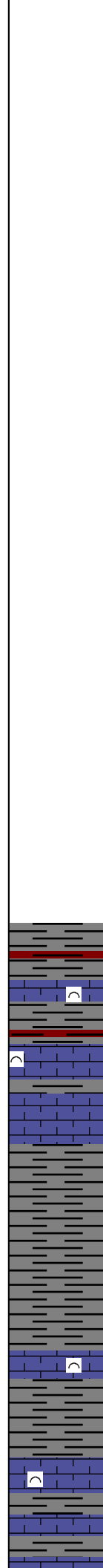
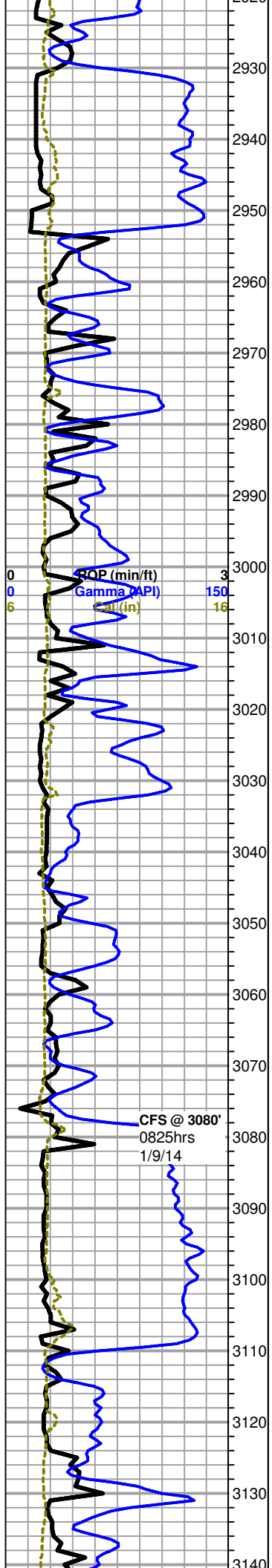


Logged By Jeremy Schwartz

1:240 Imperial







Tarkio 2953 (-974)

Mud-Co Mud chk
 3000'
 1/9/14
 Vis: 71 Wt: 8.8
 PV:17 YP:22
 WL: 8.8
 Cake:1/32
 pH: 10.5
 Ca: 80
 CHL: 3,000ppm
 Sol: 3.4 LCM: 2
 DMC: \$3,808.35
 CMC: \$8,338.30

Total Gas (units) 300
 C1 (units) 300
 C2 (units) 300
 C3 (units) 300
 C4 (units) 300

Gas kick in
 BERN
 Formation.

Bern 3032 (-1053)

Mostly gray shale with trace red, mostly soft sand waxy, also with some LS, tan to gray, micro-xln, fossiliferous, hard and dense with poor visible porosity, no shows or odor

20" As above, no shows or odor noted

40" Mostly gray shale as above, with some LS, tan to gray, fossiliferous, some with very scattered very fine pinpoint porosity, no shows or odor

60" As above with shales dropping out, mostly cream to gray LS with poor visible porosity and no show or odor

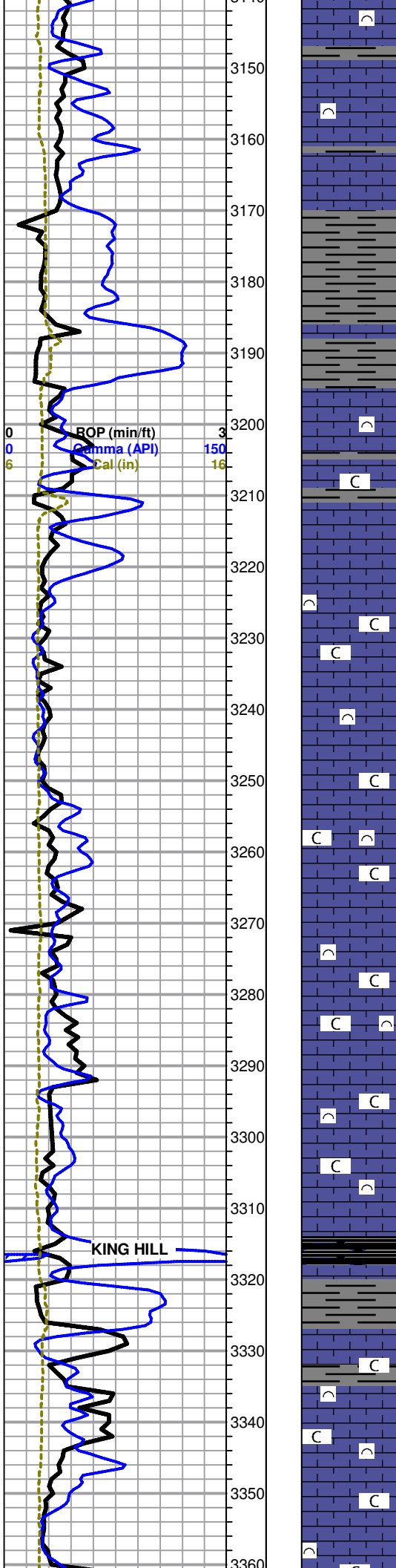
Scranton Shale 3081 (-1102)

Shale, gray, soft and waxy

Howard 3110 (-1131)

Mostly gray shale as above, with some scattered cream to gray and light brown LS, micro-xln, fossiliferous, hard and dense with poor visible porosity

Mostly gray shale with some scattered mixed LS as above



LS, cream to gray with some scattered light brown, micro-xln, fossiliferous, some soft and brittle, some hard and dense, overall poor visible porosity, with some gray shale, no shows or odor

As above

Severy Shale 3188 (-1209)

Topeka 3194 (-1215)

LS, cream to gray, micro-xln, fossiliferous, some soft and chalky, some hard and dense with poor visible porosity, slightly chalky, no shows or odor

LS as above, chalky, no shows or odor

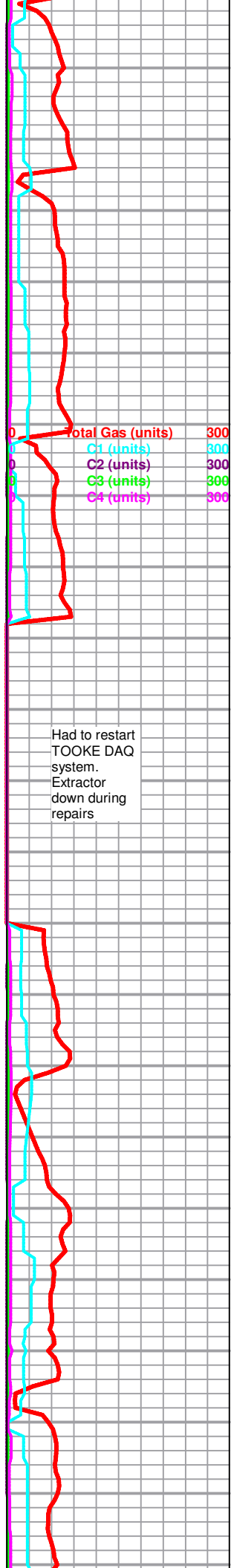
LS, gray to tan with some scattered white, micro-xln, fossiliferous, mostly soft and chalky with some hard and dense, some with scattered development and poor to fair scattered pinpoint porosity, very chalky, no shows or odor

LS as above, also with some very scattered brown, micro-xln, fossiliferous, hard and dense, chalky, no shows or odor

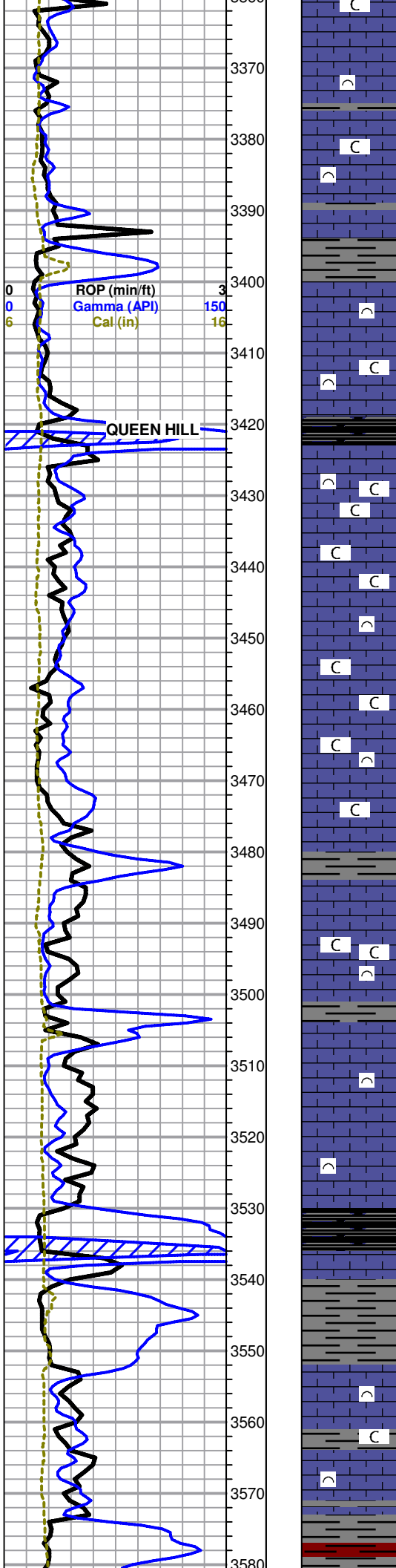
LS, gray to tan with some cream, micro-xln, fossiliferous, mostly soft and brittle with some soft and chalky, some scattered hard and dense, some with scattered poor to fair pinpoint porosity, chalky, no shows or odor

LS, gray to cream, micro-xln, fossiliferous, mostly soft and brittle, some with scattered very fine pinpoint porosity, also with trace black carbonaceous shale, chalky, no shows or odor

As above



Had to restart TOOKE DAQ system. Extractor down during repairs



LS, gray to cream, micro-xln, fossiliferous, mostly soft and brittle, some with scattered very fine pinpoint porosity, slightly chalky, no shows or odor

LS as above, slightly chalky, no shows or odor

LS, gray to cream, micro-xln, fossiliferous, some soft and brittle with scattered very fine pinpoint porosity, some soft and chalky, also with some scattered brown, hard and dense, slightly chalky, no shows or odor

LS, gray to cream, micro-xln, fossiliferous, soft and chalky, some with very scattered very fine pinpoint porosity, also with trace black shale, carbonaceous, very chalky, no shows or odor

LS, cream to white with some scattered gray, micro-xln, mostly soft and chalky, some with very scattered very fine pinpoint porosity, very chalky, no shows or odor

As above

LS, cream to white with some gray, micro-xln, fossiliferous, mostly soft and chalky, some with very scattered very fine pinpoint porosity, very chalky, no shows or odor

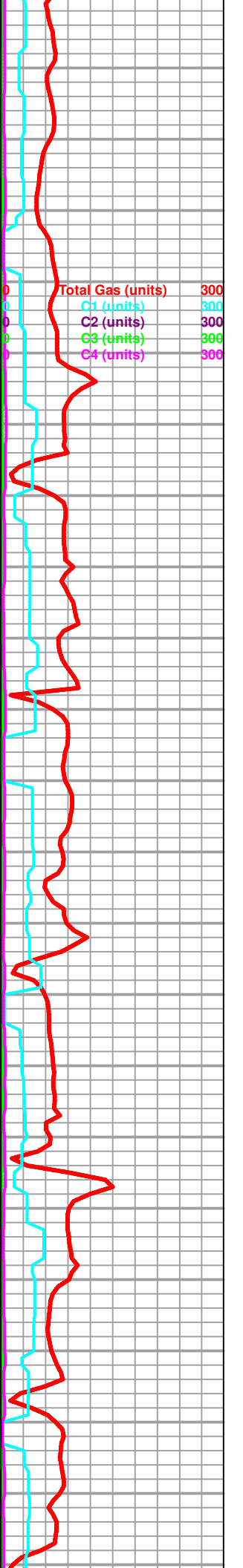
LS, cream to white with some scattered light gray and light brown, micro-xln, fossiliferous, some soft and brittle, some hard and dense, some with very scattered very fine pinpoint porosity, no shows or odor

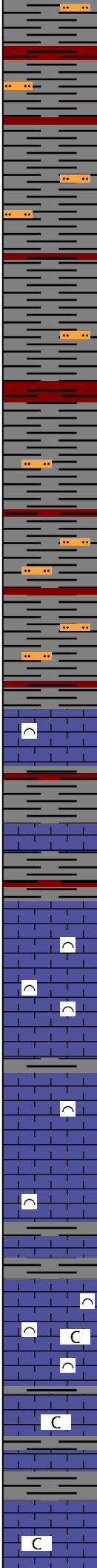
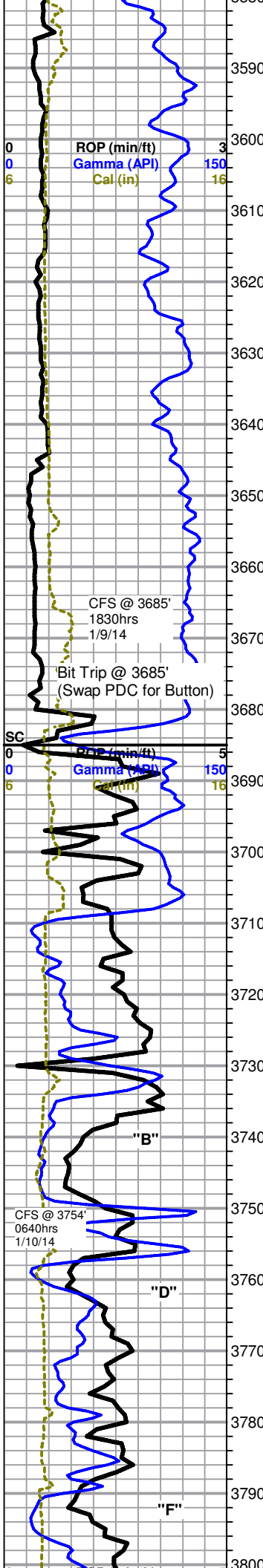
Heebner 3530 (-1551)
Shale, black carbonaceous

Toronto 3554 (-1575)

LS, cream to white with some scattered gray, micro-xln, fossiliferous, mostly soft and chalky, no shows or odor

Douglas Shale 3573 (-1594)
Shale, mostly gray with some red, mostly soft and waxy, some gray silty, no shows or odor





Shale as above, mostly gray salt and pepper with trace red, silty

As above, slightly less silty

Shale, mostly gray, soft and waxy with some scattered blocky and dense, abundant salt and pepper siltstone, no shows, odor, or fluorescence

As above

Brown Lime 3680 (-1701)

LS, light brown, micro-xln with some scattered crypto-xln, some fossiliferous, hard and dense with no visible porosity, no shows or odor

Shale, mostly gray with some scattered red, soft and waxy to blocky and dense

Lansing 3708 (-1729)

LS, cream with some scattered gray, micro-xln, very fossiliferous, mostly hard and dense with no visible porosity, shows, or odor

LS, cream to white with some scattered gray, micro-xln, fossiliferous, dense with poor visible porosity, no shows or odor

3754 30" LS, cream to light gray with some scattered white, micro-xln, some fossiliferous, some slightly chalky, few chips with fair visible pinpoint porosity and slightly vuggy edges, very scattered very light golden brown edge stain (visible when samples dried out), dull fluorescence, very weak to no cut, few chips have very slight show gas bubbles coming from porosity, poor odor

60" LS as above, no visible stain, poor odor

LS, cream to white with some scattered gray, micro-xln, fossiliferous, mostly poor visible porosity, slightly chalky, no odor or shows

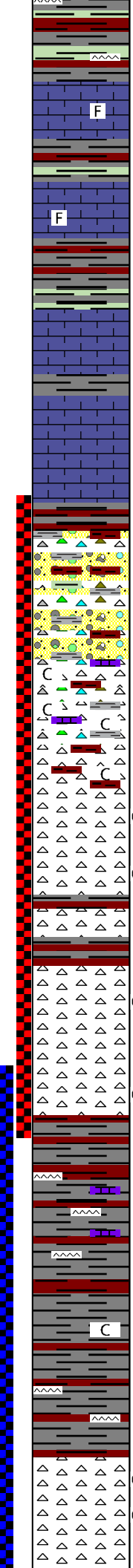
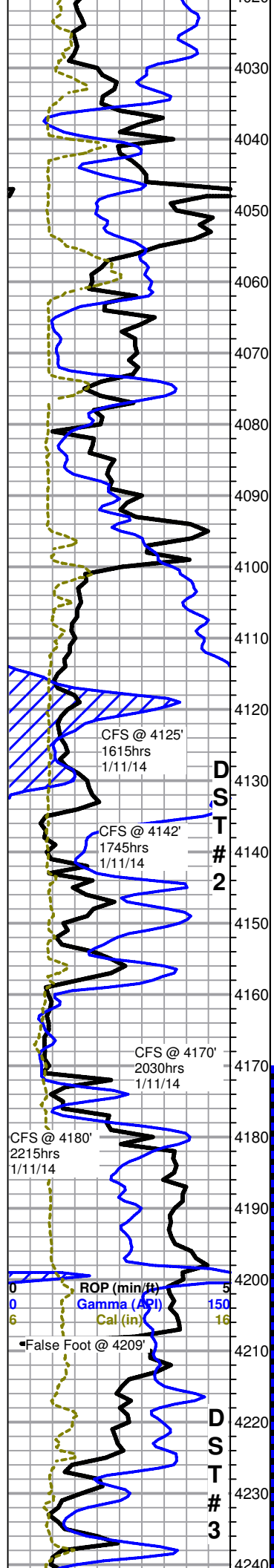
LS, cream to gray with some scattered brown, micro-xln, fossiliferous, mostly dense with poor visible porosity, slightly chalky, no shows or odor

LS as above, poor visible porosity, slightly chalky, no shows or odor

Total Gas (units) 300
 C1 (units) 300
 C2 (units) 300
 C3 (units) 300
 C4 (units) 300

Survey = 1Degree
 Strap Even with
 Board @ 3685'

Mud-Co Mud chk
 3723'
 1/10/14
 Vis: 57 Wt: 9.5
 PV:16 YP:18
 WL: 10.8
 Cake:1/32
 pH: 9.0
 Ca: 160
 CHL: 8,000ppm
 Sol: 7.5 LCM: Tr
 DMC: \$727.05
 CMC: \$9,065.35



to abundant gray to green and red shales, with some scattered tan to brown chert, red wash, no shows or odor

Marmaton 4032 (-2053)

LS, cream to light gray with some scattered light brown, micro-crypto xln, mostly lithographic and dense with some scattered slightly fossiliferous, poor visible porosity, also with some scattered gray to green and red shale, no shows or odor

LS as above with influx of gray, green, and red shale, also with some scattered tan to brown chert

LS, cream to light gray, micro-crypto xln, mostly lithographic and dense with poor visible porosity, also with trace red and gray shale and brown and orange chert, no shows or odor

LS, cream to light gray, micro-xln, mostly lithographic and dense with poor visible porosity, no shows or odor

sample LS, cream, micro-xln, mostly lithographic and dense with poor visible porosity, some scattered slightly fossiliferous, also with abundant gray to green and red shale and trace orange chert, red wash, no shows or odor

As above, with slight influx of gray to green and red shale and brown and orange cherts, chalky, red wash, no shows or odor

4125 30" Chert, mostly gray to pale green with some tan and trace orange, weathered and brittle with no visible porosity, also with gray and red shale and some scattered cream LS, chalky, no shows or odor

60" Chert, mostly gray and weathered as above, some fossiliferous, no visible porosity, also with mixed gray and red shale and trace cream LS, slightly chalky, no shows or odor

Mississippian Chert 4134 (-2135)

Fisher Farms 1-15 DST#2.jpg

4142 30" Chert, mostly cream to white, some weathered, some fresh and sharp, some very scattered with tripolitic edges and black stain in porosity, one small chip mostly saturated and bleeding gas bubbles, slow streaming cut with bright white fluorescence, also with gray chert as above and abundant red and gray shales, slight red wash, NSFO, poor fleeting odor

60" mostly same as above with slight influx in tripolitic chert with shows, mostly scattered edge stain, with few very small chips at bottom of tray being mostly saturated, slight red wash, NSFO, fair fleeting odor

Chert, white to cream with some very scattered translucent, sharp and fresh, mostly barren, some very scattered with tripolitic edges to partly tripolitic with black stain in porosity, slow streaming cut, NSFO, poor odor

4180' Mostly chert as above, few pieces with very slightly tripolitic edges and very scattered slight black to brown stain, also with influx of gray and red shale, slight red wash, no odor

Mostly gray shale with some red, also with scattered white to cream chert, mostly fresh and sharp, and trace very scattered cream LS, micro-xln, dense with poor visible porosity, slight red wash, no shows or odor

Mostly same as above, slightly less chert and LS, no shows or odor

Gray and red shale as above, also with some gray to green globs of clay and slight influx in silty gray shale, chalky wash, no shows or odor

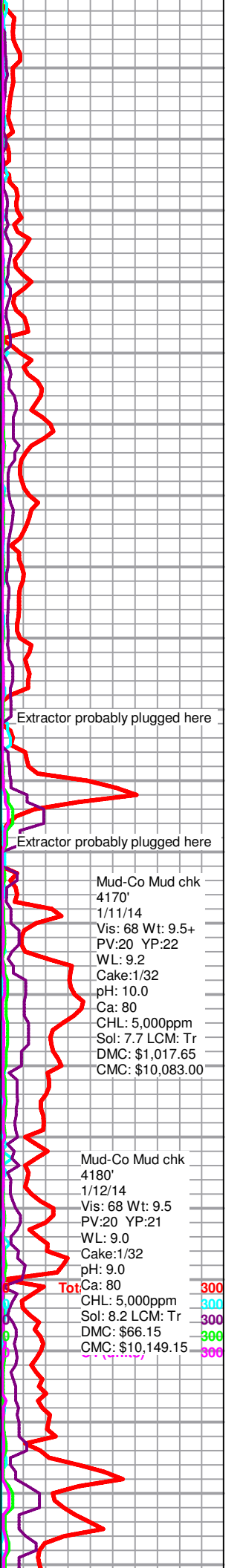
Gray and red shale with slight influx of cream to white chert, slight red wash, no shows or odor

Viola 4225 (-2246)

Fisher Farms 1-15 DST#3.jpg

Mix of gray and red shale and white to cream chert, some scattered tripolitic with scattered to mostly saturated black to brown stain, slow streaming cut with dull fluorescence, one piece slowly bleeding several gas bubbles from porosity, fair show free oil in tray, fair odor in cup

Viola Show1.JPG

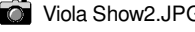


Extractor probably plugged here

Extractor probably plugged here

Mud-Co Mud chk
4170'
1/11/14
Vis: 68 Wt: 9.5+
PV:20 YP:22
WL: 9.2
Cake:1/32
pH: 10.0
Ca: 80
CHL: 5,000ppm
Sol: 7.7 LCM: Tr
DMC: \$1,017.65
CMC: \$10,083.00

Mud-Co Mud chk
4180'
1/12/14
Vis: 68 Wt: 9.5
PV:20 YP:21
WL: 9.0
Cake:1/32
pH: 9.0
Tot Ca: 80
CHL: 5,000ppm
Sol: 8.2 LCM: Tr
DMC: \$66.15
CMC: \$10,149.15



Viola Show2.JPG
 As above, with influx of tripolitic chert with mostly saturated to saturated black stain (~10-15% of sample), gassy, some bleed oil when left under lamp, good show free oil in tray, good odor

4272 30" Chert, white, fresh and sharp, mostly barren, trace tripolitic with saturated black stain, NSFO, fair odor

60" Chert as above, no shows or odor

4280 30" White chert as above, no shows or odor

60" White chert with slight influx of scattered LS, cream, slightly fossiliferous, poor visible porosity, trace white chert with slightly tripolitic edges and black to brown stain on edges in porosity, also with some gray to black with trace red shale, poor odor

Shale, gray to black with some green, blocky and dense to soft and waxy, also with some scattered SS, gray, vf-grained, sub-rounded to sub-angular, poorly sorted, very friable, barren, also with vf loose quartz grains at bottom of tray, no shows or odor

Shale, green, mostly blocky and waxy, some pyritic, also with some gray to black as above and very scattered SS, clear to gray, fine grained, most with shale inclusions, sub-angular, poorly sorted and well cemented, barren, also with some loose grains as above, no shows or odor

Poor samples very fine and crushed up, but appears to be mostly gray shale with loose quartz grains, no shows or odor

Arbuckle 4330 (-2351)

4335 30" Dolomite, cream, micro-xln, mostly weathered and dense with some scattered sub-sucrosic, poor visible porosity, barren, no shows or odor

60" Dolomite as above, some slightly pyritic, trace pyrite, no shows or odor

4345 30" Dolomite, cream with some scattered white, micro-xln, weathered and dense with poor visible porosity, no shows or odor

60" As above, with some scattered sub-sucrosic, no shows or odor

Dolomite, cream to white, micro-xln, weathered and dense, some scattered sub-sucrosic with some very scattered sucrosic, poor visible porosity, no shows or odor

Dolomite, mix of weathered and dense and sub-sucrosic with some scattered sucrosic, friable, poor visible porosity, no shows or odor

Dolomite as above, no shows or odor

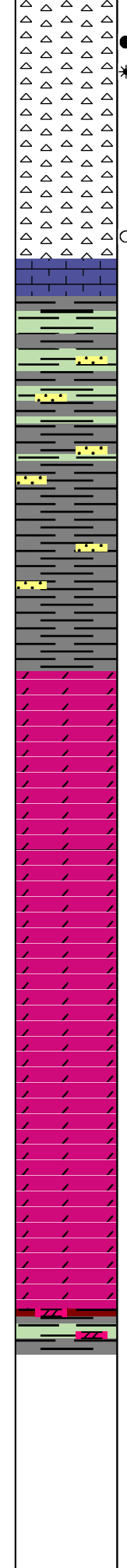
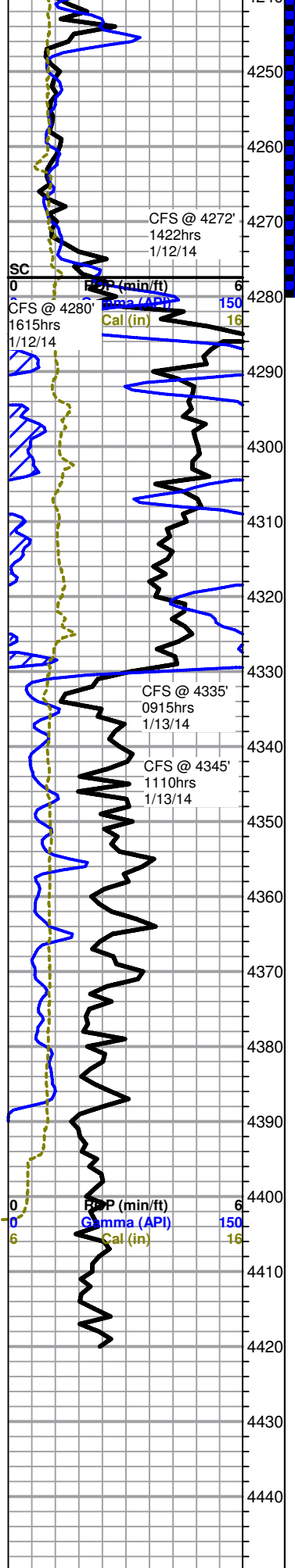
As above with slight influx of gray and green shale, no shows or odor

Mostly mix of gray, green, red, and dark gray to black shales, some blocky and dense, some soft and waxy, also with some scattered dolomite, cream to white, micro-xln, mostly sub-sucrosic with poor visible porosity, no shows or odor

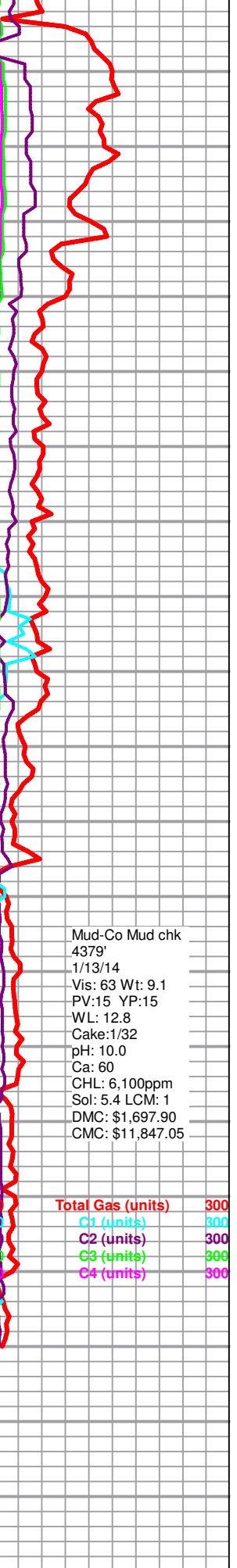
Mud-Co Mud chk
 4379'
 1/13/14
 Vis: 63 Wt: 9.1
 PV:15 YP:15
 WL: 12.8
 Cake:1/32
 pH: 10.0
 Ca: 60
 CHL: 6,100ppm
 Sol: 5.4 LCM: 1
 DMC: \$1,697.90
 CMC: \$11,847.05

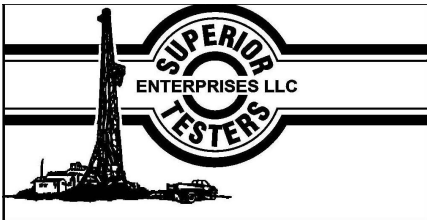
Total Gas (units) 300
 C1 (units) 300
 C2 (units) 300
 C3 (units) 300
 C4 (units) 300

Rotary TD 4420' @ 1535hrs 1/13/14
 Nabors Well Services Logging TD @ 4421'
 Complete Logging Operations @ 0245hrs 1/14/14
 Geologist Jeremy Schwartz off location @ 0330hrs 1/14/14



Text descriptions of geological formations and their characteristics, including chert, shale, and dolomite.





DRILL STEM TEST REPORT

Shelby Resources LLC

15-25s-14w Stafford

445 Union Building Suite 208 Lakewood, Colorado 80228

Fisher Farms #1-15

Job Ticket: 17113

DST#: 1

ATTN: Jeremy Schwartz

Test Start: 2014.01.10 @ 00:00:00

GENERAL INFORMATION:

Formation: **Lansing "H"**

Deviated: No Whipstock: ft (KB)

Time Tool Opened: 00:00:00

Time Test Ended: 00:00:00

Test Type: Conventional Bottom Hole (Initial)

Tester: Gene Budig

Unit No: 3320

Interval: 3842.00 ft (KB) To 3863.00 ft (KB) (TVD)

Reference Elevations: 1979.00 ft (KB)

Total Depth: 3863.00 ft (KB) (TVD)

1966.00 ft (CF)

Hole Diameter: 7.88 inches Hole Condition: Fair

KB to GR/CF: 13.00 ft

Serial #: 8419

Inside

Press@RunDepth: 1118.82 psia @ 3859.00 ft (KB)

Capacity: 5000.00 psia

Start Date: 2014.01.11

End Date:

2014.01.11

Last Calib.:

2014.01.11

Start Time: 01:08:47

End Time:

06:25:17

Time On Btm:

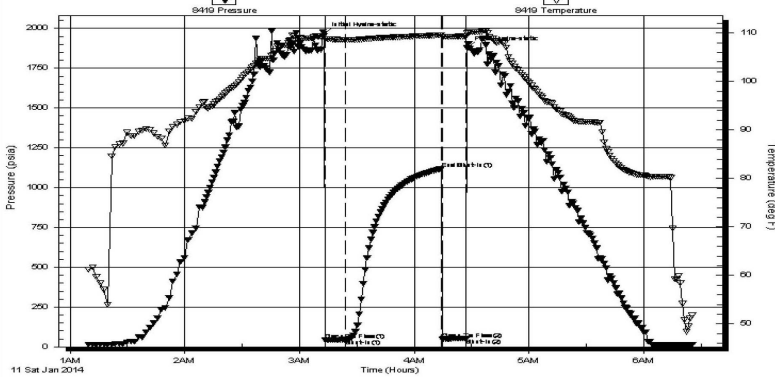
2014.01.11 @ 03:12:47

Time Off Btm:

2014.01.11 @ 04:27:47

TEST COMMENT: 1st Opening 10 Minutes Very weak surface blow
 1st Shut-In 45 Minutes-No blow back
 2nd Opening 10 Minutes no blow for 10 minutes pulled the tool-

Pressure vs. Time



PRESSURE SUMMARY

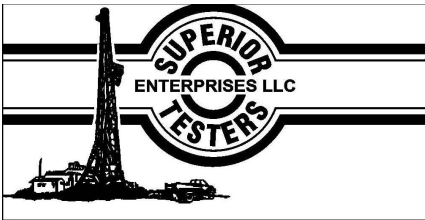
| Time (Min.) | Pressure (psia) | Temp (deg F) | Annotation |
|-------------|-----------------|--------------|----------------------|
| 0 | 1969.18 | 109.34 | Initial Hydro-static |
| 1 | 41.40 | 108.78 | Open To Flow (1) |
| 11 | 45.63 | 108.58 | Shut-In(1) |
| 62 | 1118.82 | 109.54 | End Shut-In(1) |
| 62 | 49.41 | 109.15 | Open To Flow (2) |
| 75 | 52.51 | 109.33 | Shut-In(2) |
| 75 | 1877.97 | 109.94 | Final Hydro-static |

Recovery

| Length (ft) | Description | Volume (bbl) |
|-------------|--------------|--------------|
| 5.00 | Drilling Mud | 0.02 |
| | | |
| | | |
| | | |
| | | |

Gas Rates

| Choke (inches) | Pressure (psia) | Gas Rate (Mcf/d) |
|----------------|-----------------|------------------|
| | | |



DRILL STEM TEST REPORT

Shelby Resources LLC

15-25s-14w Stafford

445 Union Building Suite 208 Lakewood, Colorado 80228

Fisher Farms #1-15

Job Ticket: 17114

DST#: 2

ATTN: Jeremy Schwartz

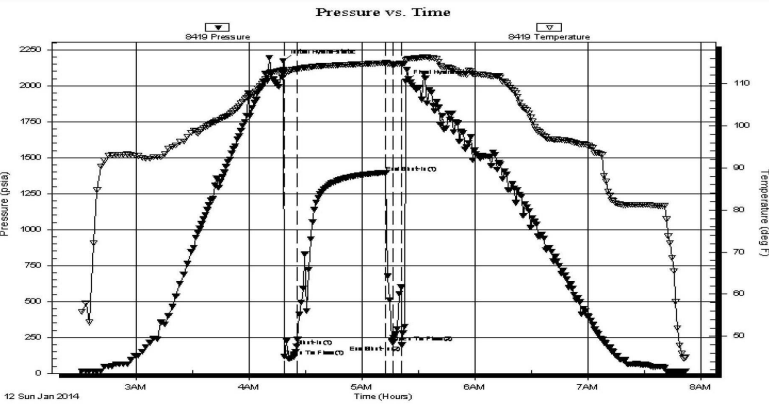
Test Start: 2014.01.12 @ 00:00:00

GENERAL INFORMATION:

Formation: **Mississippian**
 Deviated: No Whipstock: ft (KB)
 Time Tool Opened: 00:00:00
 Time Test Ended: 00:00:00
 Test Type: Conventional Bottom Hole (Initial)
 Tester: Gene Budig
 Unit No: 3320
 Interval: **4090.00 ft (KB) To 4180.00 ft (KB) (TVD)**
 Total Depth: 4190.00 ft (KB) (TVD)
 Reference Elevations: 1979.00 ft (KB)
 Hole Diameter: 7.88 inches Hole Condition: Fair
 1966.00 ft (CF)
 KB to GR/CF: 13.00 ft

Serial #: 8419 Inside
 Press@RunDepth: 196.33 psia @ 4176.28 ft (KB) Capacity: 5000.00 psia
 Start Date: 2014.01.12 End Date: 2014.01.12 Last Calib.: 2014.01.12
 Start Time: 02:30:00 End Time: 07:51:30 Time On Btm: 2014.01.12 @ 04:18:00
 Time Off Btm: 2014.01.12 @ 05:23:00

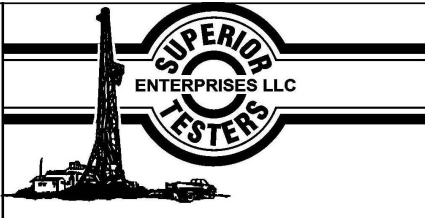
TEST COMMENT: 1st Opening 10 Minutes-Weak surface blow for 10 minutes
 1st Shut-In 45 Minutes no blow back
 2nd Opening 10 Minutes-Weak blow for 6 minutes and died



| PRESSURE SUMMARY | | | |
|------------------|-----------------|--------------|----------------------|
| Time (Min.) | Pressure (psia) | Temp (deg F) | Annotation |
| 0 | 2171.45 | 113.34 | Initial Hydro-static |
| 1 | 118.38 | 112.77 | Open To Flow (1) |
| 7 | 187.68 | 113.43 | Shut-In(1) |
| 55 | 1396.60 | 114.90 | End Shut-In(1) |
| 58 | 213.84 | 114.59 | Open To Flow (2) |
| 63 | 196.33 | 114.65 | End Shut-In(2) |
| 65 | 2030.03 | 115.51 | Final Hydro-static |

| Recovery | | |
|-------------|--------------|--------------|
| Length (ft) | Description | Volume (bbl) |
| 120.00 | drilling mud | 0.59 |
| | | |
| | | |
| | | |
| | | |

| Gas Rates | | | |
|-----------|----------------|-----------------|------------------|
| | Choke (inches) | Pressure (psia) | Gas Rate (Mcf/d) |
| | | | |



DRILL STEM TEST REPORT

Shelby Resources
 2717 Canal Blvd. Hays Kansas
 67601
 ATTN: Jeremy Schwartz

15-25s-14w-Stafford
Fisher Farms 1-15
 Job Ticket: 19171 **DST#: 3**
 Test Start: 2014.01.12 @ 07:58:00

GENERAL INFORMATION:

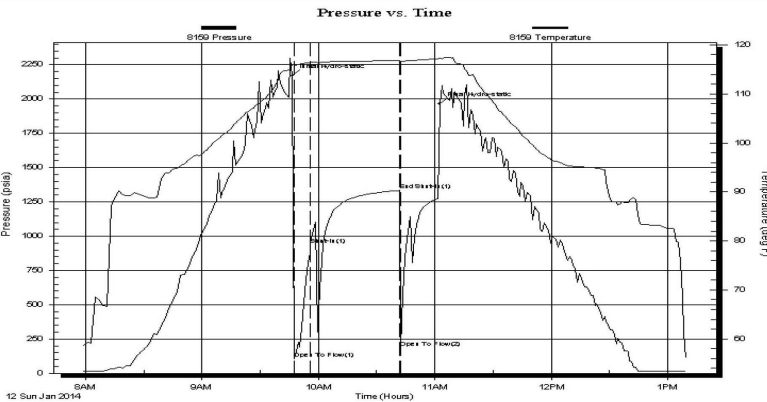
Formation: **Viola**
 Deviated: No Whipstock: ft (KB)
 Time Tool Opened: 09:47:30
 Time Test Ended: 13:09:30
Interval: 4170.00 ft (KB) To 4280.00 ft (KB) (TVD)
 Total Depth: 4280.00 ft (KB) (TVD)
 Hole Diameter: 7.88 inches Hole Condition: Fair

Test Type: Conventional Bottom Hole (Initial)
 Tester: Dustin Ellis
 Unit No: 3315-Great Bend-82
 Reference Elevations: 1979.00 ft (KB)
 1966.00 ft (CF)
 KB to GR/CF: 13.00 ft

Serial #: 8159

Press@RunDepth: 939.17 psia @ ft (KB) Capacity: 5000.00 psia
 Start Date: 2014.01.12 End Date: 2014.01.12 Last Calib.: 2014.01.12
 Start Time: 07:58:00 End Time: 13:09:30 Time On Btm: 2014.01.12 @ 09:46:30
 Time Off Btm: 2014.01.12 @ 11:02:30

TEST COMMENT: 1st Open 10 minutes Weak buiding blow built to 2 inches into a gallon bucket of w ater
 1st Shut in 45 minutes No blow back
 2nd Open 15 minutes Dead -Pulled tool
 2nd Shut in NA

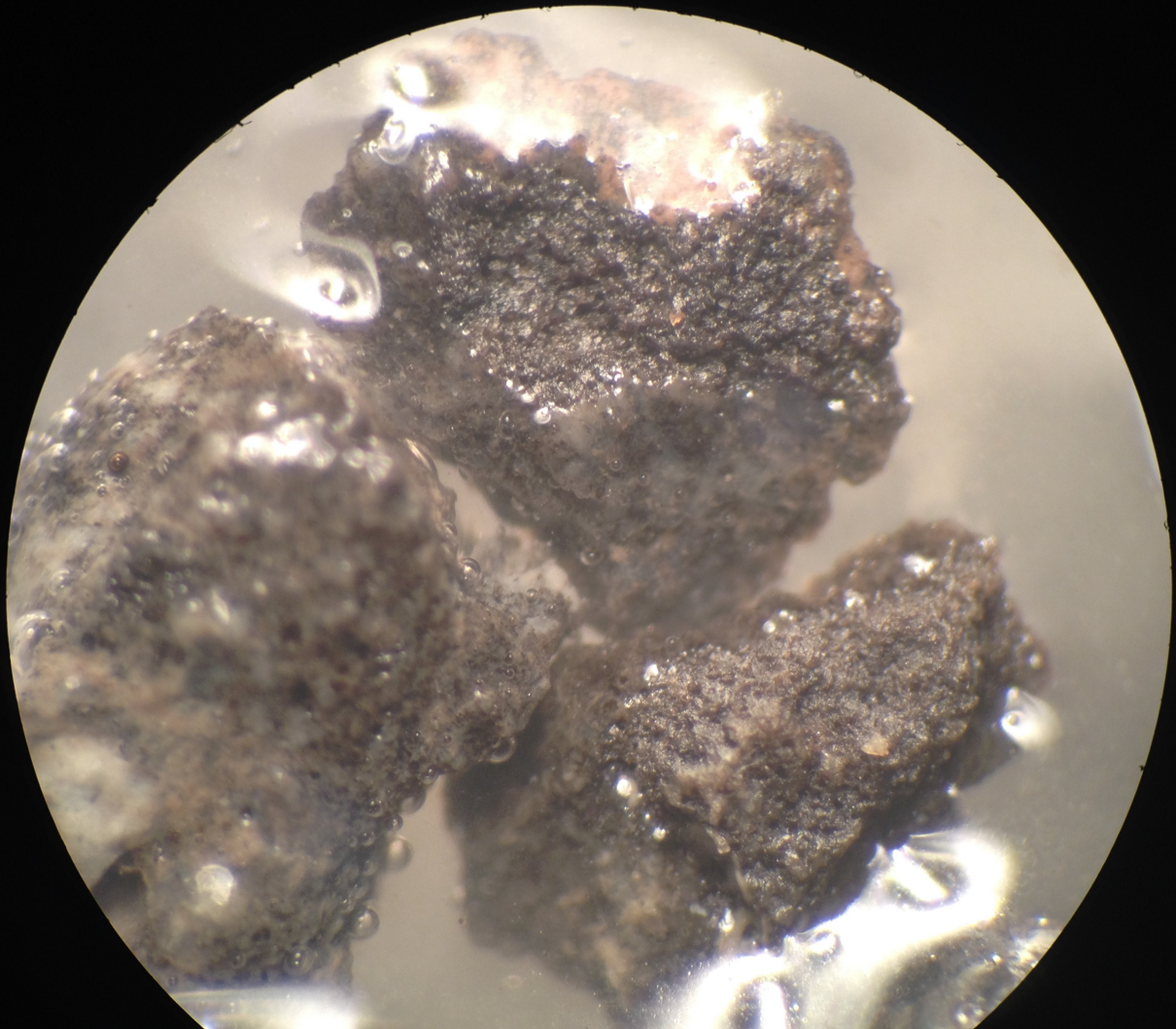


| PRESSURE SUMMARY | | | |
|------------------|-----------------|--------------|----------------------|
| Time (Min.) | Pressure (psia) | Temp (deg F) | Annotation |
| 0 | 2170.69 | 115.98 | Initial Hydro-static |
| 1 | 106.52 | 115.78 | Open To Flow (1) |
| 10 | 939.17 | 116.41 | Shut-In(1) |
| 56 | 1333.65 | 116.86 | End Shut-In(1) |
| 56 | 184.76 | 116.56 | Open To Flow (2) |
| 76 | 1965.70 | 117.30 | Final Hydro-static |

| Recovery | | |
|-------------|-------------|--------------|
| Length (ft) | Description | Volume (bbl) |
| 10.00 | Mud 100% | 0.05 |
| | | |
| | | |
| | | |
| | | |

| Gas Rates | | | |
|-----------|----------------|-----------------|------------------|
| | Choke (inches) | Pressure (psia) | Gas Rate (Mcf/d) |
| | | | |

Viola Show1.JPG



Viola Show2.JPG

