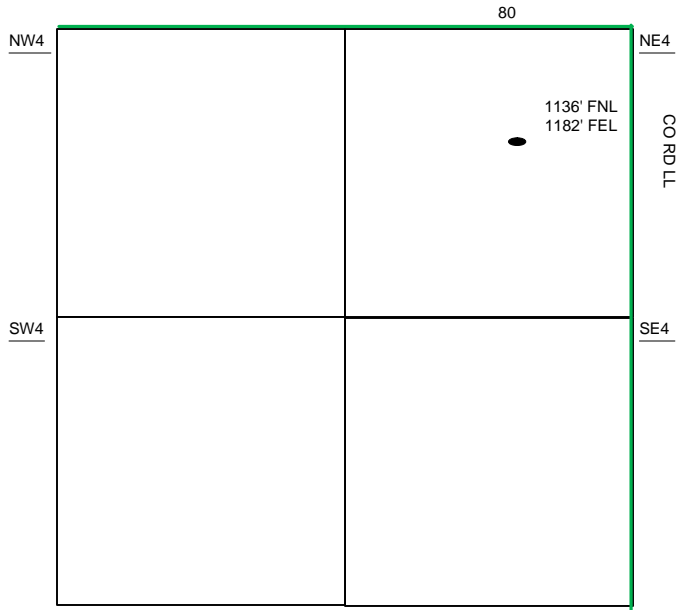


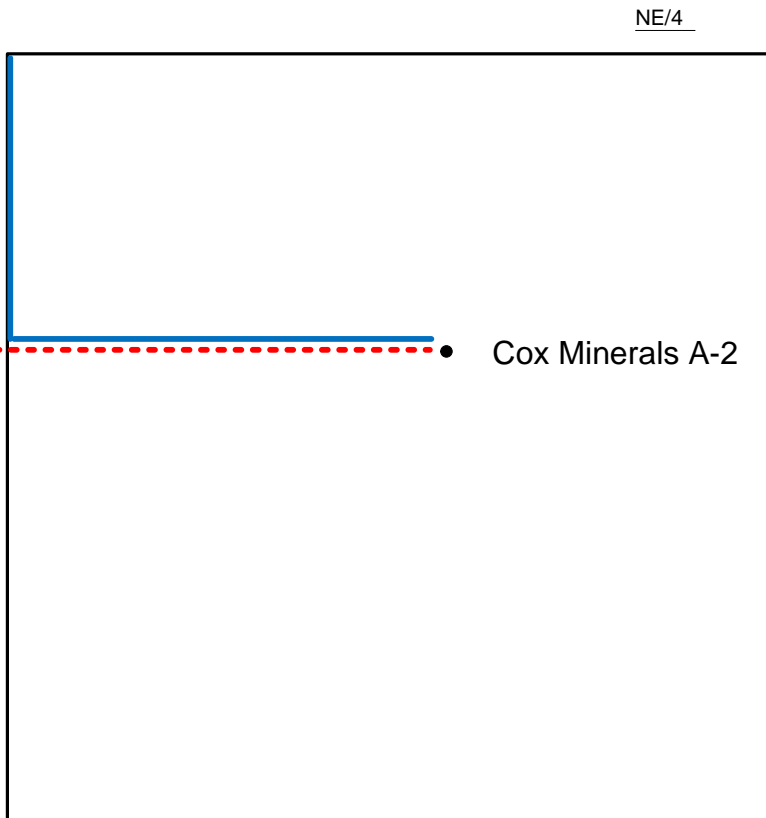
Proposed Plan of Construction

Cox Minerals A-2
Sec 11 T28S-R33W
Haskell County, KS



Sec 21 - T30S - R32W

The Tank Battery for the Cox Minerals A-2 is located in the NE of the NW quarter of Sec 11 - T28S - R33W



Proposed Details of
NE/ Sec 11 - T28S - R33W

Note-Drawing **Not** to Scale

Proposed Site Diagram
Cox Minerals A-2
February 18, 2014

