



## DRILL STEM TEST REPORT

Prepared For: **Carmen Schmitt, Inc.**

PO Box 47  
Great Bend, KS 67530-0047

ATTN: Dave Goldak

### **Arpin A #1-6**

#### **6-9s-20w Rooks,KS**

Start Date: 2014.02.12 @ 21:00:45

End Date: 2014.02.13 @ 03:03:15

Job Ticket #: 53679                      DST #: 1

Trilobite Testing, Inc  
PO Box 362 Hays, KS 67601  
ph: 785-625-4778 fax: 785-625-5620

Printed: 2014.02.18 @ 15:47:22



**TRILOBITE TESTING, INC**

# DRILL STEM TEST REPORT

Carmen Schmitt, Inc.  
 PO Box 47  
 Great Bend, KS 67530-0047  
 ATTN: Dave Goldak

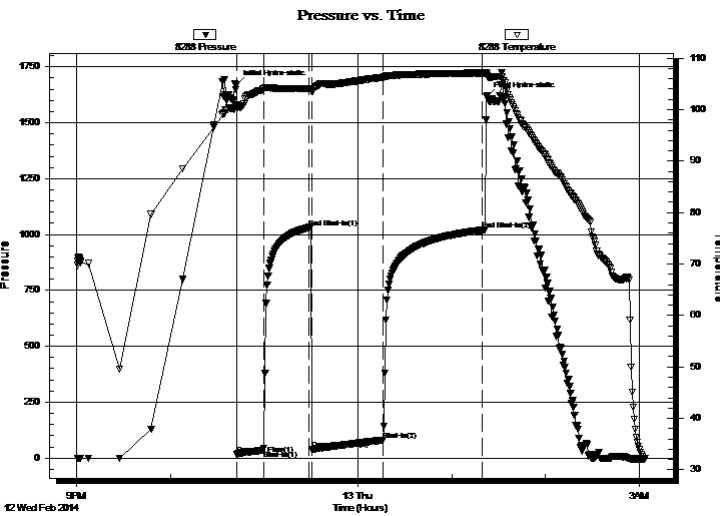
**6-9s-20w Rooks,KS**  
**Arpin A #1-6**  
 Job Ticket: 53679 **DST#: 1**  
 Test Start: 2014.02.12 @ 21:00:45

## GENERAL INFORMATION:

Formation: **Oread**  
 Deviated: No Whipstock: ft (KB)  
 Time Tool Opened: 22:42:45  
 Time Test Ended: 03:03:15  
 Interval: **3306.00 ft (KB) To 3316.00 ft (KB) (TVD)**  
 Total Depth: 3316.00 ft (KB) (TVD)  
 Hole Diameter: 7.88 inches Hole Condition: Poor  
 Test Type: Conventional Bottom Hole (Initial)  
 Tester: Stuart Stover  
 Unit No: 44  
 Reference Elevations: 2132.00 ft (KB)  
 2130.00 ft (CF)  
 KB to GR/CF: 2.00 ft

**Serial #: 8288** **Inside**  
 Press@RunDepth: 80.79 psig @ 3307.00 ft (KB) Capacity: 8000.00 psig  
 Start Date: 2014.02.12 End Date: 2014.02.13 Last Calib.: 2014.02.13  
 Start Time: 21:00:47 End Time: 03:03:15 Time On Btm: 2014.02.12 @ 22:42:35  
 Time Off Btm: 2014.02.13 @ 01:22:15

TEST COMMENT: IFP: Surface blow to 1" blow  
 FFP: 1/2" blow to 1 1/2" blow



## PRESSURE SUMMARY

Time (Min.)	Pressure (psig)	Temp (deg F)	Annotation
0	1669.62	100.98	Initial Hydro-static
1	17.71	100.32	Open To Flow (1)
17	35.74	103.98	Shut-In(1)
46	1031.45	104.05	End Shut-In(1)
48	39.04	103.55	Open To Flow (2)
94	80.79	106.30	Shut-In(2)
157	1019.85	107.11	End Shut-In(2)
160	1617.72	107.05	Final Hydro-static

## Recovery

Length (ft)	Description	Volume (bbl)
120.00	Mdy Wtr	0.59

## Gas Rates

	Choke (inches)	Pressure (psig)	Gas Rate (Mcf/d)





**TRILOBITE  
TESTING, INC**

# DRILL STEM TEST REPORT

**TOOL DIAGRAM**

Carmen Schmitt, Inc.

**6-9s-20w Rooks,KS**

PO Box 47  
Great Bend, KS 67530-0047

**Arpin A #1-6**

Job Ticket: 53679

**DST#: 1**

ATTN: Dave Goldak

Test Start: 2014.02.12 @ 21:00:45

## Tool Information

Drill Pipe:	Length: 3044.00 ft	Diameter: 3.80 inches	Volume: 42.70 bbl	Tool Weight: 2400.00 lb
Heavy Wt. Pipe:	Length: 0.00 ft	Diameter: 0.00 inches	Volume: 0.00 bbl	Weight set on Packer: 25000.00 lb
Drill Collar:	Length: 250.00 ft	Diameter: 2.25 inches	Volume: 1.23 bbl	Weight to Pull Loose: 60000.00 lb
			<u>Total Volume: 43.93 bbl</u>	Tool Chased 2.00 ft
Drill Pipe Above KB:	15.00 ft			String Weight: Initial 45000.00 lb
Depth to Top Packer:	3306.00 ft			Final 45000.00 lb
Depth to Bottom Packer:	ft			
Interval between Packers:	10.00 ft			
Tool Length:	37.00 ft			
Number of Packers:	2	Diameter: 6.75 inches		

Tool Comments:

## Tool Description

Tool Description	Length (ft)	Serial No.	Position	Depth (ft)	Accum. Lengths
Shut In Tool	5.00			3284.00	
Hydraulic tool	5.00			3289.00	
Jars	5.00			3294.00	
Safety Joint	3.00			3297.00	
Packer	5.00			3302.00	27.00 Bottom Of Top Packer
Packer	4.00			3306.00	
Stubb	1.00			3307.00	
Recorder	0.00	8288	Inside	3307.00	
Recorder	0.00	8521	Outside	3307.00	
Perforations	5.00			3312.00	
Bullnose	4.00			3316.00	10.00 Bottom Packers & Anchor

**Total Tool Length: 37.00**



**TRILOBITE  
TESTING, INC**

# DRILL STEM TEST REPORT

## FLUID SUMMARY

Carmen Schmitt, Inc.  
PO Box 47  
Great Bend, KS 67530-0047  
ATTN: Dave Goldak

**6-9s-20w Rooks,KS**  
**Arpin A #1-6**  
Job Ticket: 53679      **DST#: 1**  
Test Start: 2014.02.12 @ 21:00:45

### Mud and Cushion Information

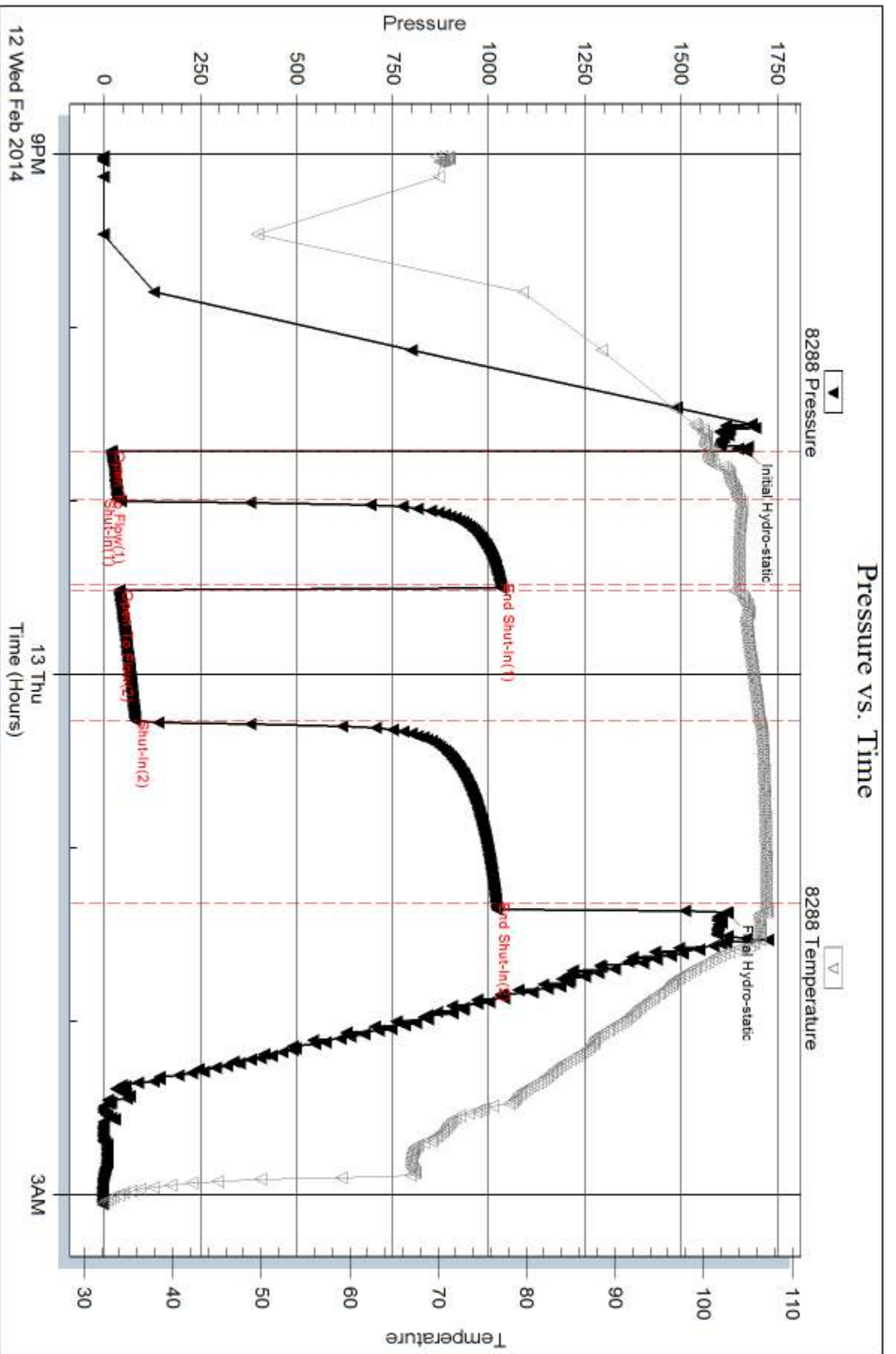
Mud Type: Gel Chem	Cushion Type:	Oil API:	deg API
Mud Weight: 9.00 lb/gal	Cushion Length: ft	Water Salinity:	38000 ppm
Viscosity: 44.00 sec/qt	Cushion Volume: bbl		
Water Loss: 5.35 in <sup>3</sup>	Gas Cushion Type:		
Resistivity: ohm.m	Gas Cushion Pressure: psig		
Salinity: 1400.00 ppm			
Filter Cake: inches			

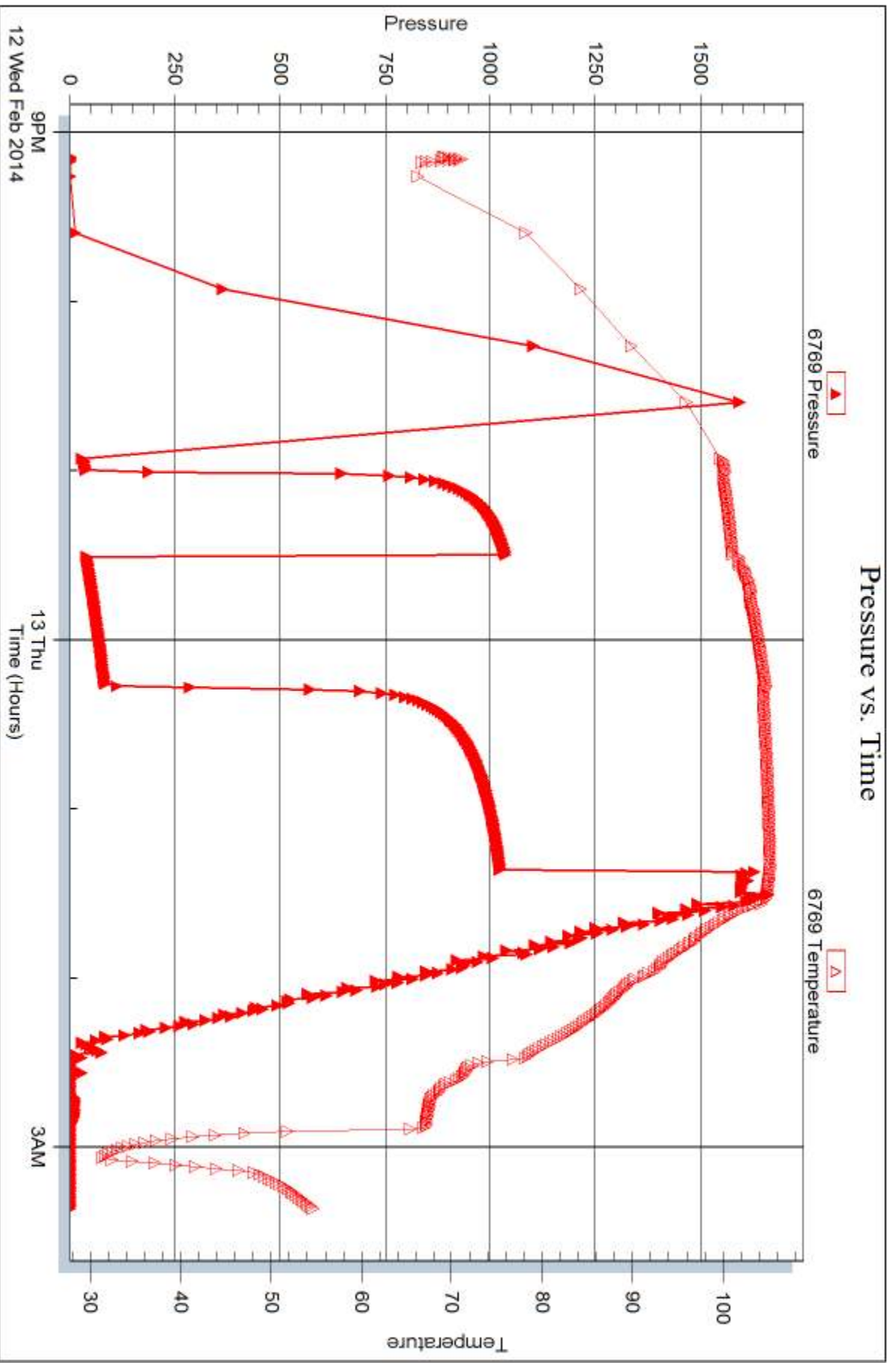
### Recovery Information

Recovery Table

Length ft	Description	Volume bbl
120.00	Mdy Wtr	0.590

Total Length: 120.00 ft      Total Volume: 0.590 bbl  
 Num Fluid Samples: 0      Num Gas Bombs: 0      Serial #:  
 Laboratory Name:      Laboratory Location:  
 Recovery Comments: API RW .17 @ 73 deg.







## DRILL STEM TEST REPORT

Prepared For: **Carmen Schmitt, Inc.**

PO Box 47  
Great Bend, KS 67530-0047

ATTN: Dave Goldak

### **Arpin A #1-6**

#### **6-9s-20w Rooks,KS**

Start Date: 2014.02.13 @ 16:14:27

End Date: 2014.02.13 @ 22:15:27

Job Ticket #: 53680                      DST #: 2

Trilobite Testing, Inc  
PO Box 362 Hays, KS 67601  
ph: 785-625-4778 fax: 785-625-5620

Printed: 2014.02.18 @ 15:46:51





**TRILOBITE TESTING, INC**

# DRILL STEM TEST REPORT

Carmen Schmitt, Inc.  
 PO Box 47  
 Great Bend, KS 67530-0047  
 ATTN: Dave Goldak

**6-9s-20w Rooks,KS**  
**Arpin A #1-6**  
 Job Ticket: 53680 **DST#: 2**  
 Test Start: 2014.02.13 @ 16:14:27

## GENERAL INFORMATION:

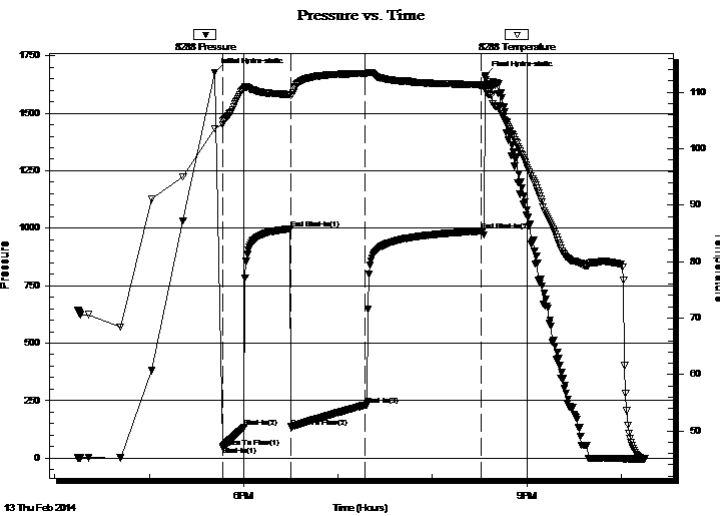
Formation: **LKC C**  
 Deviated: No Whipstock: ft (KB)  
 Time Tool Opened: 17:46:37  
 Time Test Ended: 22:15:27  
 Interval: **3406.00 ft (KB) To 3432.00 ft (KB) (TVD)**  
 Total Depth: 3432.00 ft (KB) (TVD)  
 Hole Diameter: 7.88 inches Hole Condition: Poor  
 Test Type: Conventional Bottom Hole (Reset)  
 Tester: Stuart Stover  
 Unit No: 44  
 Reference Elevations: 2132.00 ft (KB)  
 2130.00 ft (CF)  
 KB to GR/CF: 2.00 ft

## Serial #: 8288

Inside

Press@RunDepth: 230.20 psig @ 3407.00 ft (KB) Capacity: 8000.00 psig  
 Start Date: 2014.02.13 End Date: 2014.02.13 Last Calib.: 2014.02.13  
 Start Time: 16:14:29 End Time: 22:15:27 Time On Btm: 2014.02.13 @ 17:41:27  
 Time Off Btm: 2014.02.13 @ 20:33:47

TEST COMMENT: IFP: 1/2" blow increasing to 8"  
 FFP: Surface blow increasing to 6" blow



## PRESSURE SUMMARY

Time (Min.)	Pressure (psig)	Temp (deg F)	Annotation
0	1677.40	103.56	Initial Hydro-static
6	46.81	104.30	Open To Flow (1)
6	50.91	104.88	Shut-In(1)
19	133.60	110.63	Shut-In(2)
49	997.59	109.57	End Shut-In(1)
49	136.07	109.35	Open To Flow (2)
96	230.20	113.32	Shut-In(3)
170	987.93	111.28	End Shut-In(2)
173	1664.69	110.76	Final Hydro-static

## Recovery

Length (ft)	Description	Volume (bbl)
420.00	Mdy w tr 2% mud 98% w tr	3.61

\* Recovery from multiple tests

## Gas Rates

Choke (inches)	Pressure (psig)	Gas Rate (Mcf/d)



**TRILOBITE TESTING, INC**

# DRILL STEM TEST REPORT

Carmen Schmitt, Inc.  
 PO Box 47  
 Great Bend, KS 67530-0047  
 ATTN: Dave Goldak

**6-9s-20w Rooks,KS**  
**Arpin A #1-6**  
 Job Ticket: 53680 **DST#: 2**  
 Test Start: 2014.02.13 @ 16:14:27

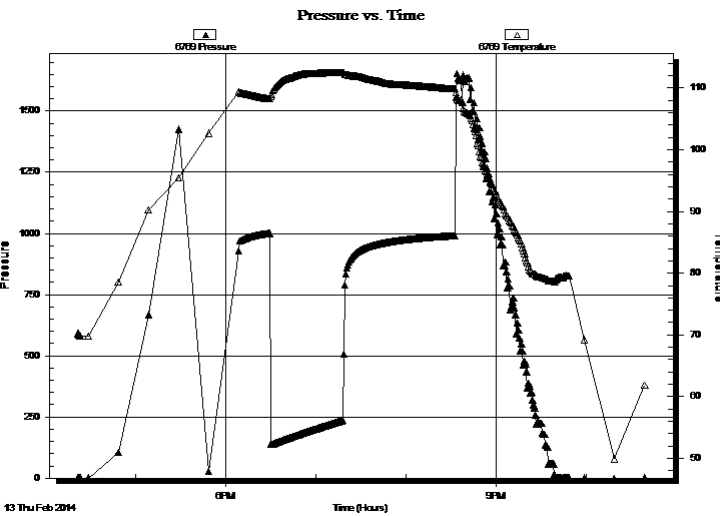
## GENERAL INFORMATION:

Formation: **LKC C**  
 Deviated: No Whipstock: ft (KB)  
 Test Type: Conventional Bottom Hole (Reset)  
 Time Tool Opened: 17:46:37 Tester: Stuart Stover  
 Time Test Ended: 22:15:27 Unit No: 44  
 Interval: **3406.00 ft (KB) To 3432.00 ft (KB) (TVD)** Reference Elevations: 2132.00 ft (KB)  
 Total Depth: 3432.00 ft (KB) (TVD) 2130.00 ft (CF)  
 Hole Diameter: 7.88 inches Hole Condition: Poor KB to GR/CF: 2.00 ft

## Serial #: 6769

Press@RunDepth: psig @ ft (KB) Capacity: 8000.00 psig  
 Start Date: 2014.02.13 End Date: 2014.02.13 Last Calib.: 2014.02.13  
 Start Time: 16:21:45 End Time: 22:53:32 Time On Btm:  
 Time Off Btm:

TEST COMMENT: IFP: 1/2" blow increasing to 8"  
 FFP: Surface blow increasing to 6" blow



## PRESSURE SUMMARY

Time (Min.)	Pressure (psig)	Temp (deg F)	Annotation

## Recovery

Length (ft)	Description	Volume (bbl)
420.00	Mdy w tr 2% mud 98% w tr	3.61

\* Recovery from multiple tests

## Gas Rates

Choke (inches)	Pressure (psig)	Gas Rate (Mcf/d)



**TRILOBITE  
TESTING, INC**

# DRILL STEM TEST REPORT

**TOOL DIAGRAM**

Carmen Schmitt, Inc.  
 PO Box 47  
 Great Bend, KS 67530-0047  
 ATTN: Dave Goldak

**6-9s-20w Rooks,KS**  
**Arpin A #1-6**  
 Job Ticket: 53680 **DST#: 2**  
 Test Start: 2014.02.13 @ 16:14:27

**Tool Information**

Drill Pipe:	Length: 3160.00 ft	Diameter: 3.80 inches	Volume: 44.33 bbl	Tool Weight:	2400.00 lb
Heavy Wt. Pipe:	Length: 0.00 ft	Diameter: 0.00 inches	Volume: 0.00 bbl	Weight set on Packer:	25000.00 lb
Drill Collar:	Length: 250.00 ft	Diameter: 2.25 inches	Volume: 1.23 bbl	Weight to Pull Loose:	50000.00 lb
			<u>Total Volume: 45.56 bbl</u>	Tool Chased	0.00 ft
Drill Pipe Above KB:	31.00 ft			String Weight: Initial	46000.00 lb
Depth to Top Packer:	3406.00 ft			Final	46000.00 lb
Depth to Bottom Packer:	ft				
Interval between Packers:	26.00 ft				
Tool Length:	53.00 ft				
Number of Packers:	2	Diameter: 6.75 inches			

Tool Comments:

<b>Tool Description</b>	<b>Length (ft)</b>	<b>Serial No.</b>	<b>Position</b>	<b>Depth (ft)</b>	<b>Accum. Lengths</b>
-------------------------	--------------------	-------------------	-----------------	-------------------	-----------------------

Shut In Tool	5.00			3384.00	
Hydraulic tool	5.00			3389.00	
Jars	5.00			3394.00	
Safety Joint	3.00			3397.00	
Packer	5.00			3402.00	27.00 Bottom Of Top Packer
Packer	4.00			3406.00	
Stubb	1.00			3407.00	
Recorder	0.00	8288	Inside	3407.00	
Recorder	0.00	8521	Outside	3407.00	
Perforations	21.00			3428.00	
Bullnose	4.00			3432.00	26.00 Bottom Packers & Anchor

**Total Tool Length: 53.00**



**TRILOBITE  
TESTING, INC**

# DRILL STEM TEST REPORT

## FLUID SUMMARY

Carmen Schmitt, Inc.

**6-9s-20w Rooks,KS**

PO Box 47  
Great Bend, KS 67530-0047

**Arpin A #1-6**

Job Ticket: 53680

**DST#: 2**

ATTN: Dave Goldak

Test Start: 2014.02.13 @ 16:14:27

### Mud and Cushion Information

Mud Type: Gel Chem

Cushion Type:

Oil API:

deg API

Mud Weight: 9.00 lb/gal

Cushion Length: ft

Water Salinity: 85000 ppm

Viscosity: 50.00 sec/qt

Cushion Volume: bbl

Water Loss: 5.35 in<sup>3</sup>

Gas Cushion Type:

Resistivity: ohm.m

Gas Cushion Pressure: psig

Salinity: 1400.00 ppm

Filter Cake: inches

### Recovery Information

Recovery Table

Length ft	Description	Volume bbl
420.00	Mdy w tr 2% mud 98% w tr	3.614

Total Length: 420.00 ft      Total Volume: 3.614 bbl

Num Fluid Samples: 0

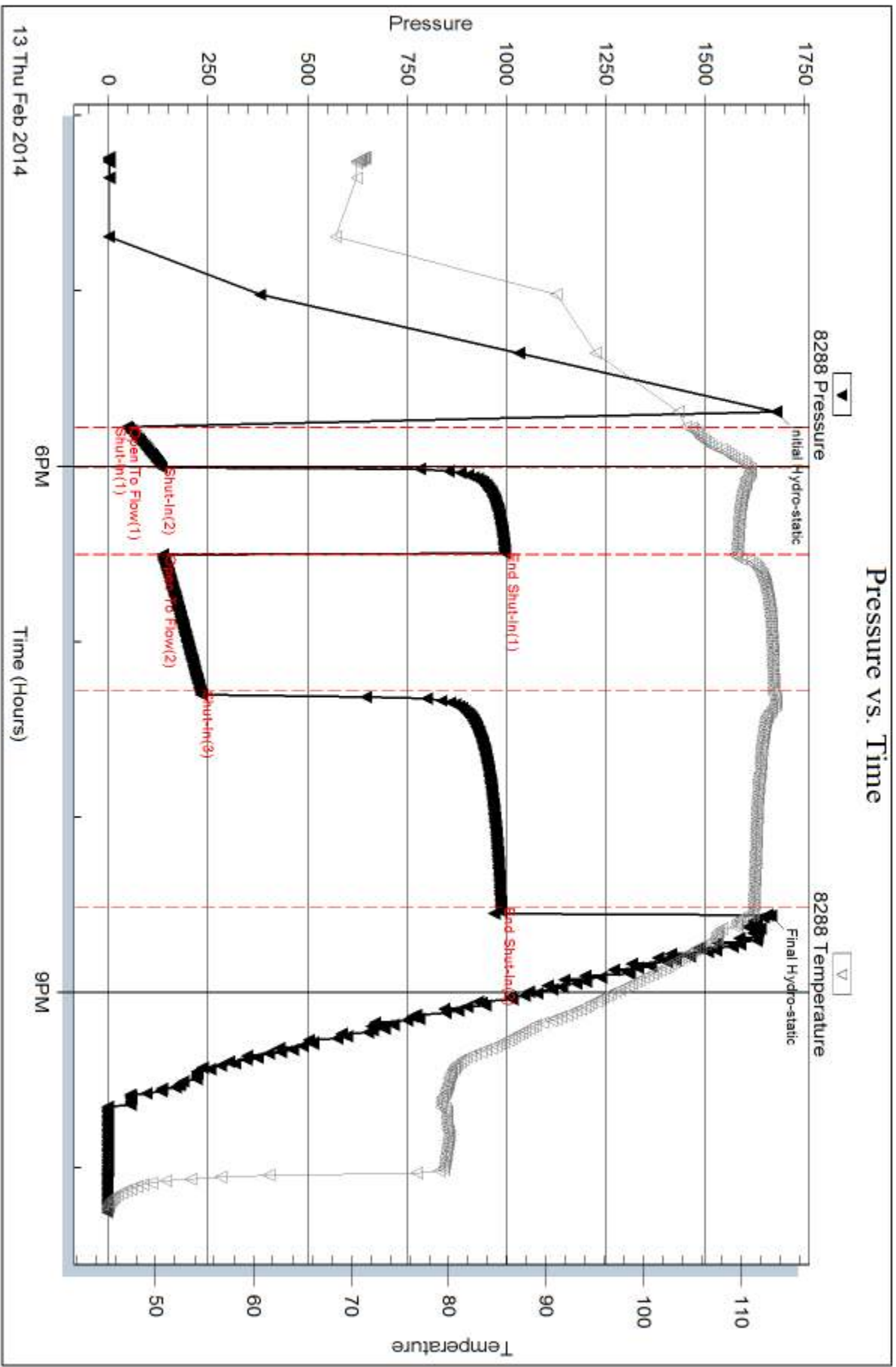
Num Gas Bombs: 0

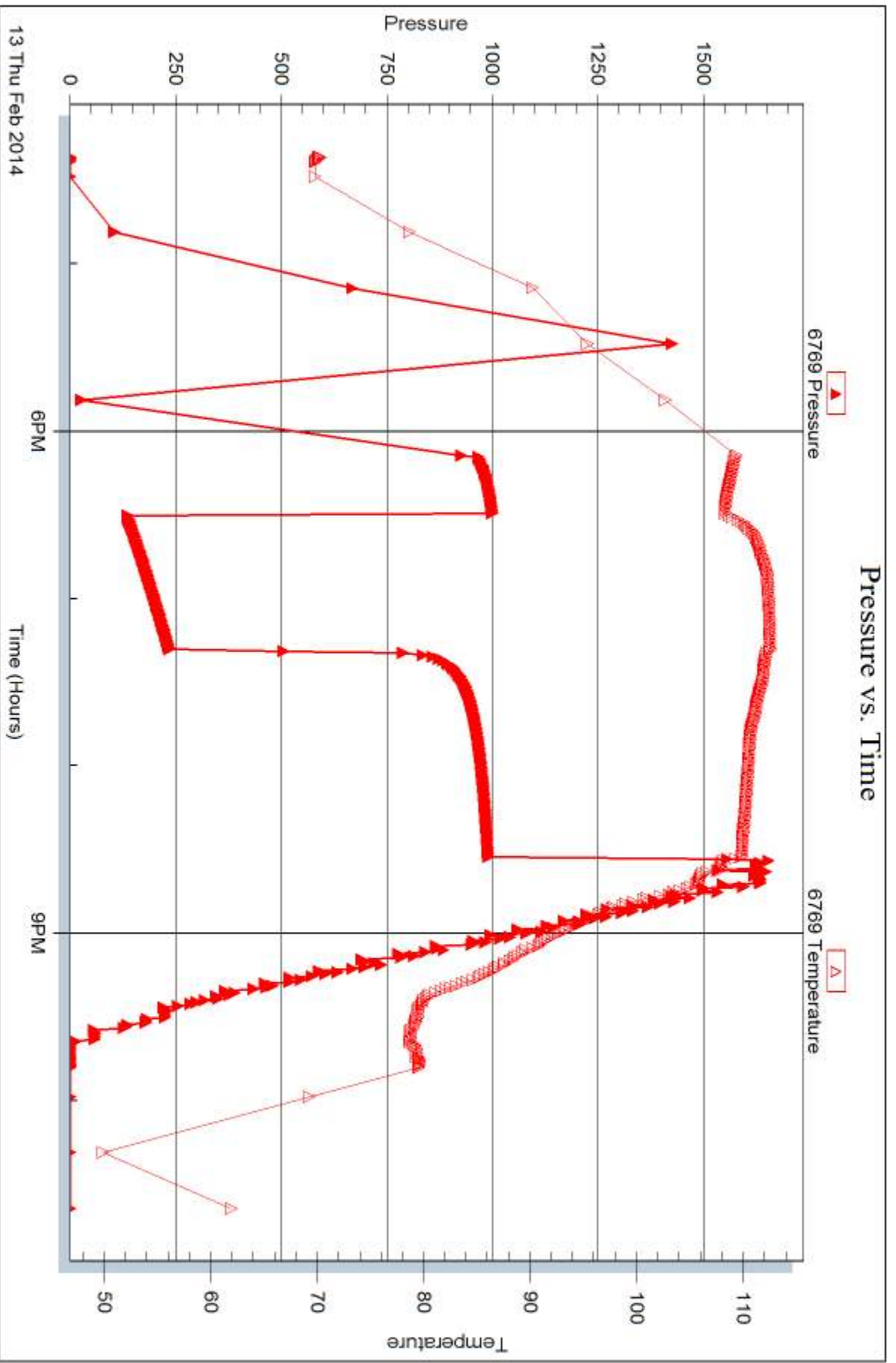
Serial #:

Laboratory Name:

Laboratory Location:

Recovery Comments: API RW. 0.13@ 49 deg.







## DRILL STEM TEST REPORT

Prepared For: **Carmen Schmitt, Inc.**

PO Box 47  
Great Bend, KS 67530-0047

ATTN: Dave Goldak

### **Arpin A #1-6**

#### **6-9s-20w Rooks,KS**

Start Date: 2014.02.14 @ 06:59:09

End Date: 2014.02.14 @ 12:59:39

Job Ticket #: 53618                      DST #: 3

Trilobite Testing, Inc  
PO Box 362 Hays, KS 67601  
ph: 785-625-4778 fax: 785-625-5620

Printed: 2014.02.18 @ 15:46:24



**TRILOBITE  
TESTING, INC**

# DRILL STEM TEST REPORT

Carmen Schmitt, Inc.  
PO Box 47  
Great Bend, KS 67530-0047  
ATTN: Dave Goldak

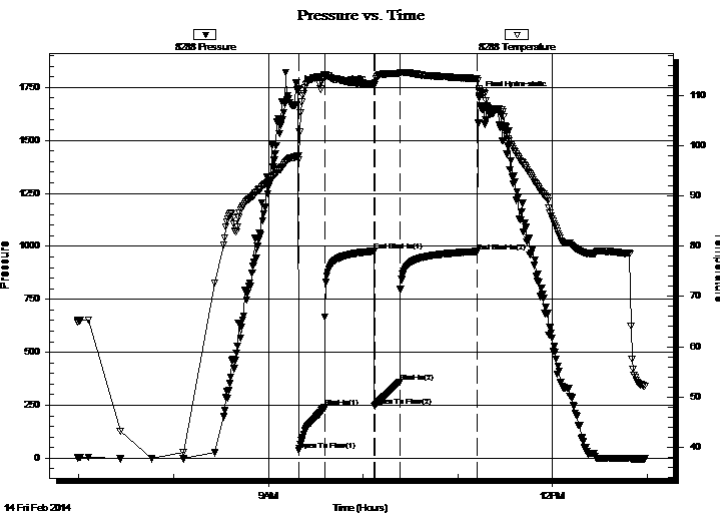
**6-9s-20w Rooks,KS**  
**Arpin A #1-6**  
Job Ticket: 53618      **DST#: 3**  
Test Start: 2014.02.14 @ 06:59:09

## GENERAL INFORMATION:

Formation: **LKC F**  
Deviated: No Whipstock: ft (KB)  
Time Tool Opened: 09:19:09  
Time Test Ended: 12:59:39  
Interval: **3459.00 ft (KB) To 3472.00 ft (KB) (TVD)**  
Total Depth: 3472.00 ft (KB) (TVD)  
Hole Diameter: 7.88 inches Hole Condition: Fair  
Test Type: Conventional Bottom Hole (Reset)  
Tester: Stuart Stover  
Unit No: 44  
Reference Elevations: 2132.00 ft (KB)  
2130.00 ft (CF)  
KB to GR/CF: 2.00 ft

**Serial #: 8288      Inside**  
Press@RunDepth: 360.14 psig @ 3460.00 ft (KB)      Capacity: 8000.00 psig  
Start Date: 2014.02.14      End Date: 2014.02.14      Last Calib.: 2014.02.14  
Start Time: 06:59:11      End Time: 12:58:39      Time On Btm: 2014.02.14 @ 09:18:49  
Time Off Btm: 2014.02.14 @ 11:13:29

TEST COMMENT: IFP: BOB in 3 minutes  
FFP: BOB in 7 minutes



## PRESSURE SUMMARY

Time (Min.)	Pressure (psig)	Temp (deg F)	Annotation
0	1737.72	98.02	Initial Hydro-static
1	38.47	97.15	Open To Flow (1)
17	238.50	113.86	Shut-In(1)
48	977.92	112.30	End Shut-In(1)
49	245.06	112.04	Open To Flow (2)
65	360.14	114.37	Shut-In(2)
114	974.79	113.35	End Shut-In(2)
115	1710.67	111.27	Final Hydro-static

## Recovery

Length (ft)	Description	Volume (bbl)
660.00	salt w tr	6.98

\* Recovery from multiple tests

## Gas Rates

Choke (inches)	Pressure (psig)	Gas Rate (Mcf/d)







**TRILOBITE  
TESTING, INC**

# DRILL STEM TEST REPORT

**TOOL DIAGRAM**

Carmen Schmitt, Inc.

**6-9s-20w Rooks,KS**

PO Box 47  
Great Bend, KS 67530-0047

**Arpin A #1-6**

Job Ticket: 53618

**DST#: 3**

ATTN: Dave Goldak

Test Start: 2014.02.14 @ 06:59:09

## Tool Information

Drill Pipe:	Length: 3198.00 ft	Diameter: 3.80 inches	Volume: 44.86 bbl	Tool Weight:	2400.00 lb
Heavy Wt. Pipe:	Length: 0.00 ft	Diameter: 0.00 inches	Volume: 0.00 bbl	Weight set on Packer:	25000.00 lb
Drill Collar:	Length: 250.00 ft	Diameter: 2.25 inches	Volume: 1.23 bbl	Weight to Pull Loose:	60000.00 lb
			<u>Total Volume: 46.09 bbl</u>	Tool Chased	3.00 ft
Drill Pipe Above KB:	16.00 ft			String Weight: Initial	45000.00 lb
Depth to Top Packer:	3459.00 ft			Final	48000.00 lb
Depth to Bottom Packer:	ft				
Interval between Packers:	13.00 ft				
Tool Length:	40.00 ft				
Number of Packers:	2	Diameter: 6.75 inches			

Tool Comments:

## Tool Description

Tool Description	Length (ft)	Serial No.	Position	Depth (ft)	Accum. Lengths
Shut In Tool	5.00			3437.00	
Hydraulic tool	5.00			3442.00	
Jars	5.00			3447.00	
Safety Joint	3.00			3450.00	
Packer	5.00			3455.00	27.00 Bottom Of Top Packer
Packer	4.00			3459.00	
Stubb	1.00			3460.00	
Recorder	0.00	8288	Inside	3460.00	
Recorder	0.00	8521	Outside	3460.00	
Perforations	8.00			3468.00	
Bullnose	4.00			3472.00	13.00 Bottom Packers & Anchor

**Total Tool Length: 40.00**



**TRILOBITE  
TESTING, INC**

# DRILL STEM TEST REPORT

## FLUID SUMMARY

Carmen Schmitt, Inc.

**6-9s-20w Rooks,KS**

PO Box 47  
Great Bend, KS 67530-0047

**Arpin A #1-6**

Job Ticket: 53618

**DST#: 3**

ATTN: Dave Goldak

Test Start: 2014.02.14 @ 06:59:09

### Mud and Cushion Information

Mud Type: Gel Chem

Cushion Type:

Oil API:

deg API

Mud Weight: 9.00 lb/gal

Cushion Length:

ft

Water Salinity:

80000 ppm

Viscosity: 56.00 sec/qt

Cushion Volume:

bbbl

Water Loss: 5.97 in<sup>3</sup>

Gas Cushion Type:

Resistivity: ohm.m

Gas Cushion Pressure:

psig

Salinity: 1500.00 ppm

Filter Cake: inches

### Recovery Information

Recovery Table

Length ft	Description	Volume bbl
660.00	salt w tr	6.981

Total Length: 660.00 ft      Total Volume: 6.981 bbl

Num Fluid Samples: 0

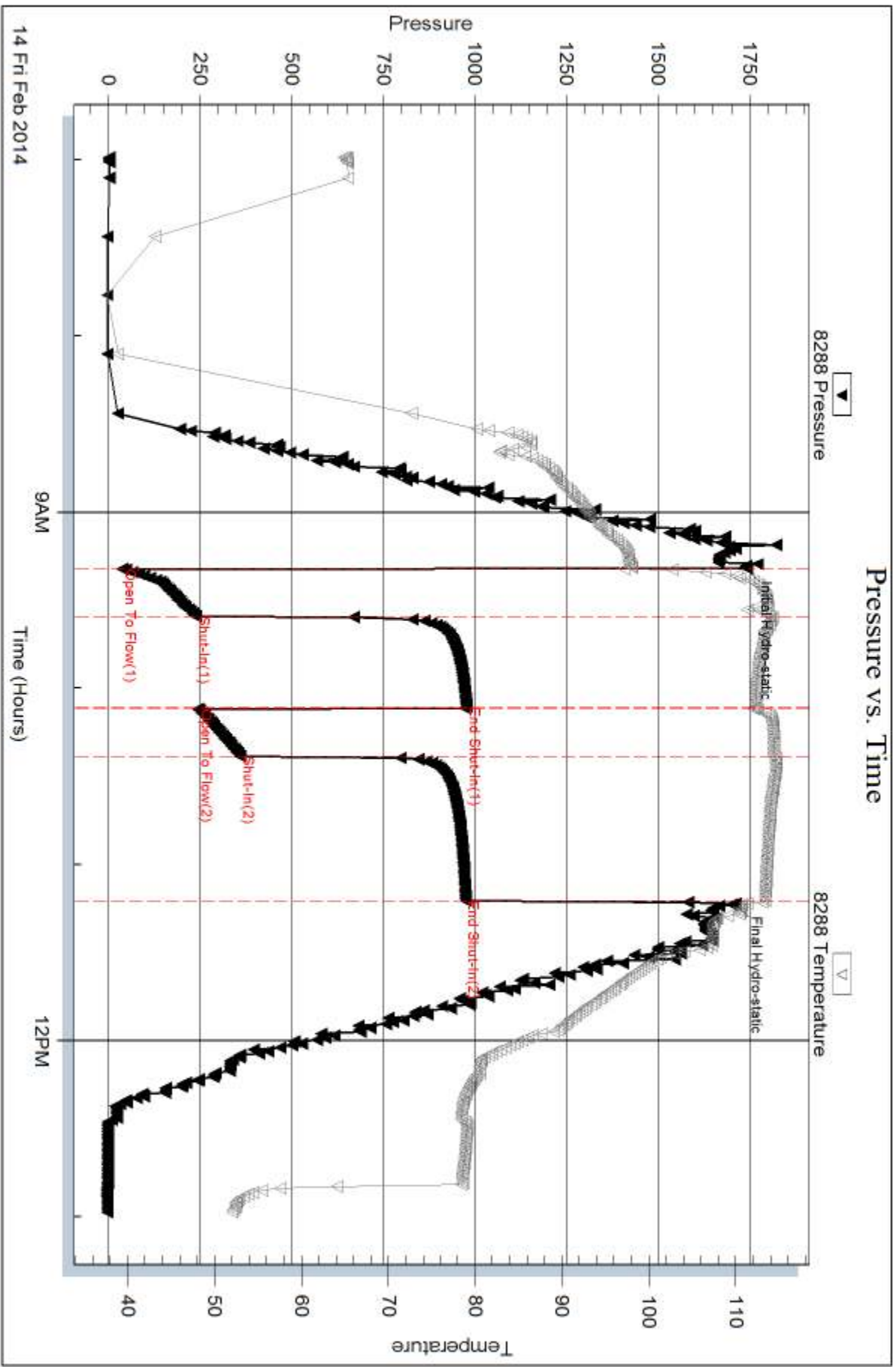
Num Gas Bombs: 0

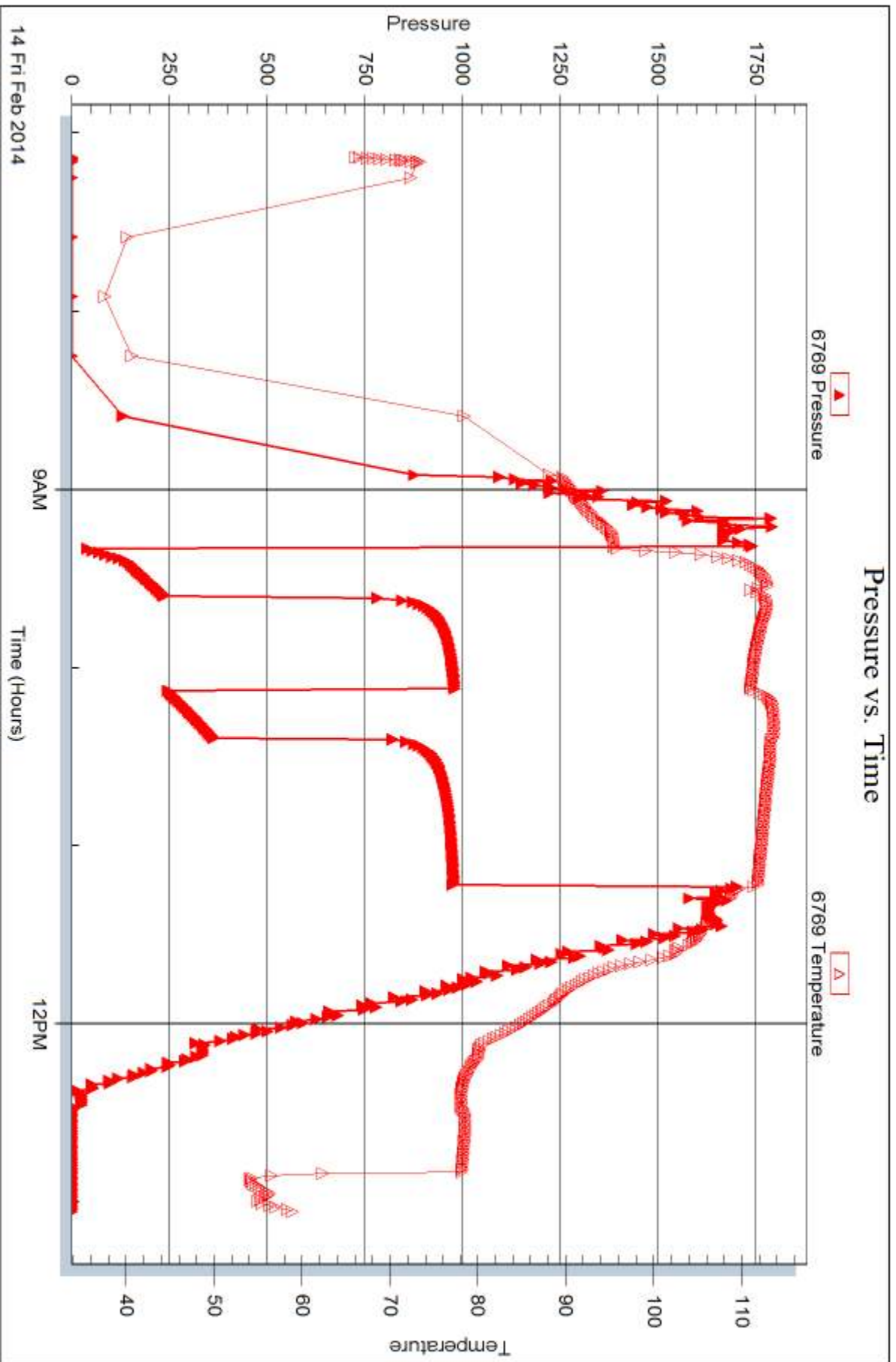
Serial #:

Laboratory Name:

Laboratory Location:

Recovery Comments: RW. .09 @ 70 deg







## DRILL STEM TEST REPORT

Prepared For: **Carmen Schmitt, Inc.**

PO Box 47  
Great Bend, KS 67530-0047

ATTN: Dave Goldak

### **Arpin A #1-6**

#### **6-9s-20w Rooks,KS**

Start Date: 2014.02.15 @ 00:19:16

End Date: 2014.02.15 @ 05:28:44

Job Ticket #: 53682                      DST #: 4

Trilobite Testing, Inc  
PO Box 362 Hays, KS 67601  
ph: 785-625-4778 fax: 785-625-5620

Printed: 2014.02.18 @ 15:45:58



**TRILOBITE TESTING, INC**

# DRILL STEM TEST REPORT

Carmen Schmitt, Inc.  
 PO Box 47  
 Great Bend, KS 67530-0047  
 ATTN: Dave Goldak

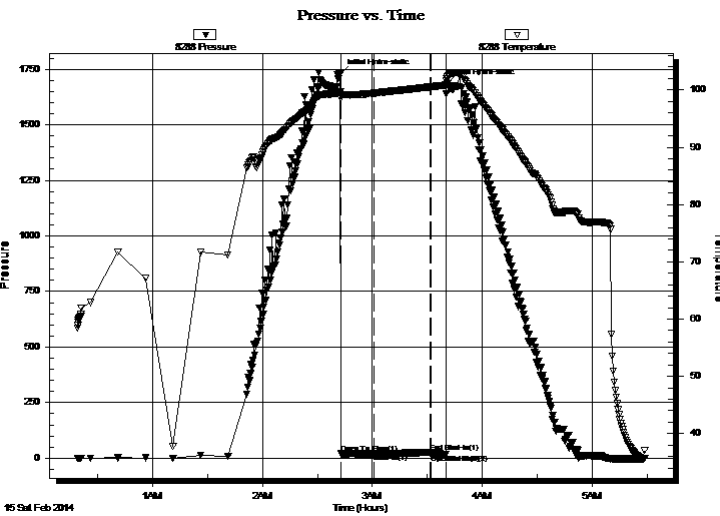
**6-9s-20w Rooks,KS**  
**Arpin A #1-6**  
 Job Ticket: 53682 **DST#: 4**  
 Test Start: 2014.02.15 @ 00:19:16

## GENERAL INFORMATION:

Formation: **LKC H-J**  
 Deviated: No Whipstock: ft (KB)  
 Time Tool Opened: 02:42:44  
 Time Test Ended: 05:28:44  
 Interval: **3502.00 ft (KB) To 3560.00 ft (KB) (TVD)**  
 Total Depth: 3560.00 ft (KB) (TVD)  
 Hole Diameter: 7.88 inches Hole Condition: Fair  
 Test Type: Conventional Bottom Hole (Reset)  
 Tester: Stuart Stover  
 Unit No: 44  
 Reference Elevations: 2132.00 ft (KB)  
 2130.00 ft (CF)  
 KB to GR/CF: 2.00 ft

**Serial #: 8288** **Inside**  
 Press@RunDepth: 20.28 psig @ 3503.00 ft (KB) Capacity: 8000.00 psig  
 Start Date: 2014.02.15 End Date: 2014.02.15 Last Calib.: 2014.02.15  
 Start Time: 00:19:16 End Time: 05:28:44 Time On Btm: 2014.02.15 @ 02:42:34  
 Time Off Btm: 2014.02.15 @ 03:40:34

TEST COMMENT: IFP: Surface blow died in 12 minutes  
 FFP: Surface blow died in 2 minutes



## PRESSURE SUMMARY

Time (Min.)	Pressure (psig)	Temp (deg F)	Annotation
0	1729.94	99.68	Initial Hydro-static
1	19.69	98.50	Open To Flow (1)
19	20.28	99.44	Shut-In(1)
49	25.69	100.54	End Shut-In(1)
50	18.79	100.55	Open To Flow (2)
58	18.77	100.84	Shut-In(2)
58	1685.67	101.90	Final Hydro-static

## Recovery

Length (ft)	Description	Volume (bbl)
5.00	drlg mud	0.02

\* Recovery from multiple tests

## Gas Rates

Choke (inches)	Pressure (psig)	Gas Rate (Mcf/d)







**TRILOBITE  
TESTING, INC**

# DRILL STEM TEST REPORT

**TOOL DIAGRAM**

Carmen Schmitt, Inc.

**6-9s-20w Rooks,KS**

PO Box 47  
Great Bend, KS 67530-0047

**Arpin A #1-6**

Job Ticket: 53682

**DST#: 4**

ATTN: Dave Goldak

Test Start: 2014.02.15 @ 00:19:16

## Tool Information

Drill Pipe:	Length: 3230.00 ft	Diameter: 3.80 inches	Volume: 45.31 bbl	Tool Weight:	2400.00 lb
Heavy Wt. Pipe:	Length: 0.00 ft	Diameter: 0.00 inches	Volume: 0.00 bbl	Weight set on Packer:	25000.00 lb
Drill Collar:	Length: 250.00 ft	Diameter: 2.25 inches	Volume: 1.23 bbl	Weight to Pull Loose:	lb
			<u>Total Volume: 46.54 bbl</u>	Tool Chased	2.00 ft
Drill Pipe Above KB:	5.00 ft			String Weight: Initial	45000.00 lb
Depth to Top Packer:	3502.00 ft			Final	lb
Depth to Bottom Packer:	ft				
Interval between Packers:	59.00 ft				
Tool Length:	86.00 ft				
Number of Packers:	2	Diameter: 6.75 inches			

Tool Comments:

Tool Description	Length (ft)	Serial No.	Position	Depth (ft)	Accum. Lengths
------------------	-------------	------------	----------	------------	----------------

Shut In Tool	5.00			3480.00	
Hydraulic tool	5.00			3485.00	
Jars	5.00			3490.00	
Safety Joint	3.00			3493.00	
Packer	5.00			3498.00	27.00 Bottom Of Top Packer
Packer	4.00			3502.00	
Stubb	1.00			3503.00	
Recorder	0.00	8288	Inside	3503.00	
Recorder	0.00	8521	Outside	3503.00	
Perforations	1.00			3504.00	
Change Over Sub	1.00			3505.00	
Drill Pipe	32.00			3537.00	
Change Over Sub	1.00			3538.00	
Perforations	19.00			3557.00	
Bullnose	4.00			3561.00	59.00 Bottom Packers & Anchor

**Total Tool Length: 86.00**



**TRILOBITE  
TESTING, INC**

# DRILL STEM TEST REPORT

## FLUID SUMMARY

Carmen Schmitt, Inc.

**6-9s-20w Rooks,KS**

PO Box 47  
Great Bend, KS 67530-0047

**Arpin A #1-6**

Job Ticket: 53682

**DST#: 4**

ATTN: Dave Goldak

Test Start: 2014.02.15 @ 00:19:16

### Mud and Cushion Information

Mud Type: Gel Chem

Cushion Type:

Oil API:

deg API

Mud Weight: 9.00 lb/gal

Cushion Length:

ft

Water Salinity:

1500 ppm

Viscosity: 56.00 sec/qt

Cushion Volume:

bbbl

Water Loss: 5.98 in<sup>3</sup>

Gas Cushion Type:

Resistivity: ohm.m

Gas Cushion Pressure:

psig

Salinity: 1500.00 ppm

Filter Cake: inches

### Recovery Information

Recovery Table

Length ft	Description	Volume bbl
5.00	drlg mud	0.025

Total Length: 5.00 ft      Total Volume: 0.025 bbl

Num Fluid Samples: 0

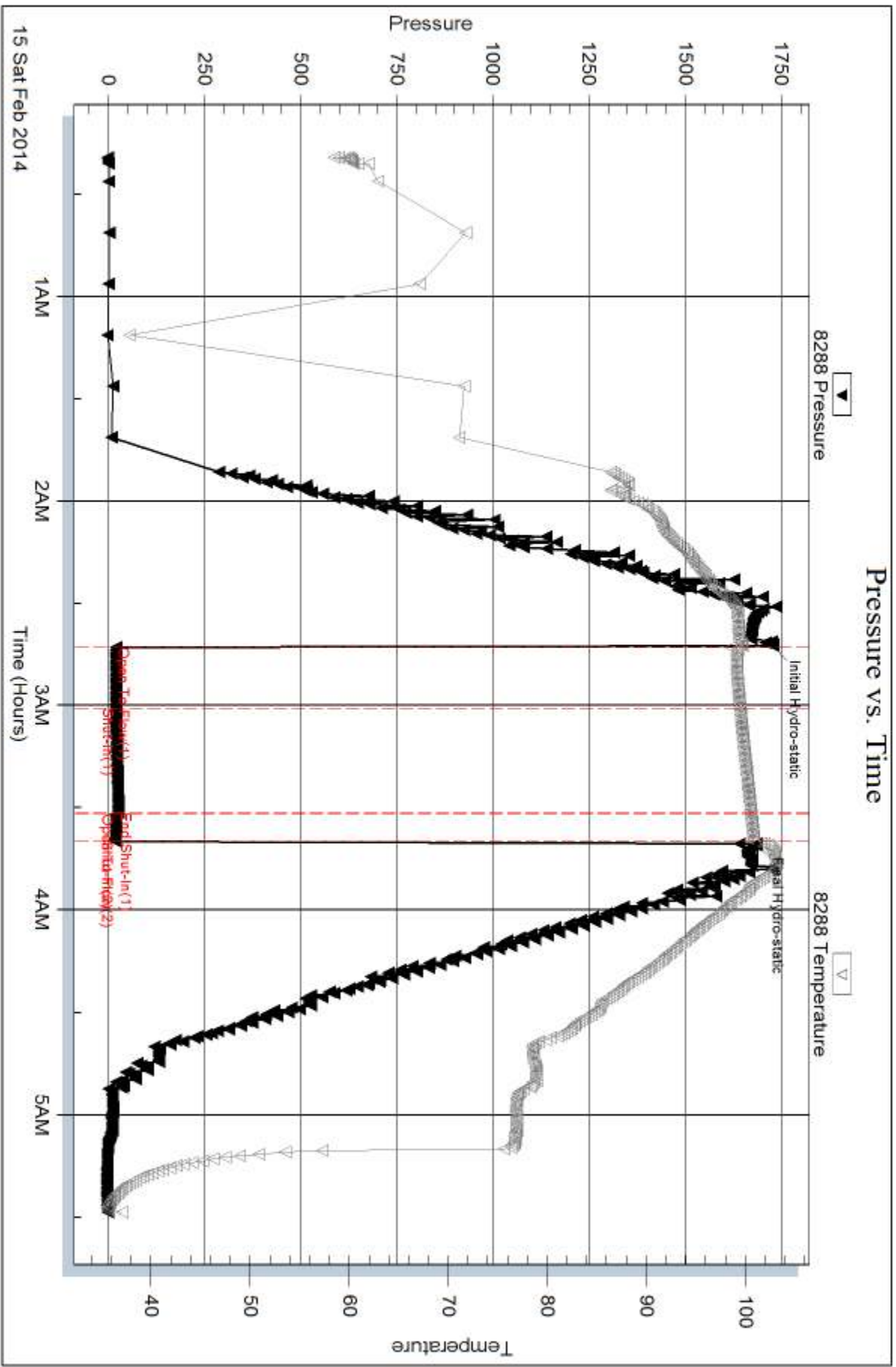
Num Gas Bombs: 0

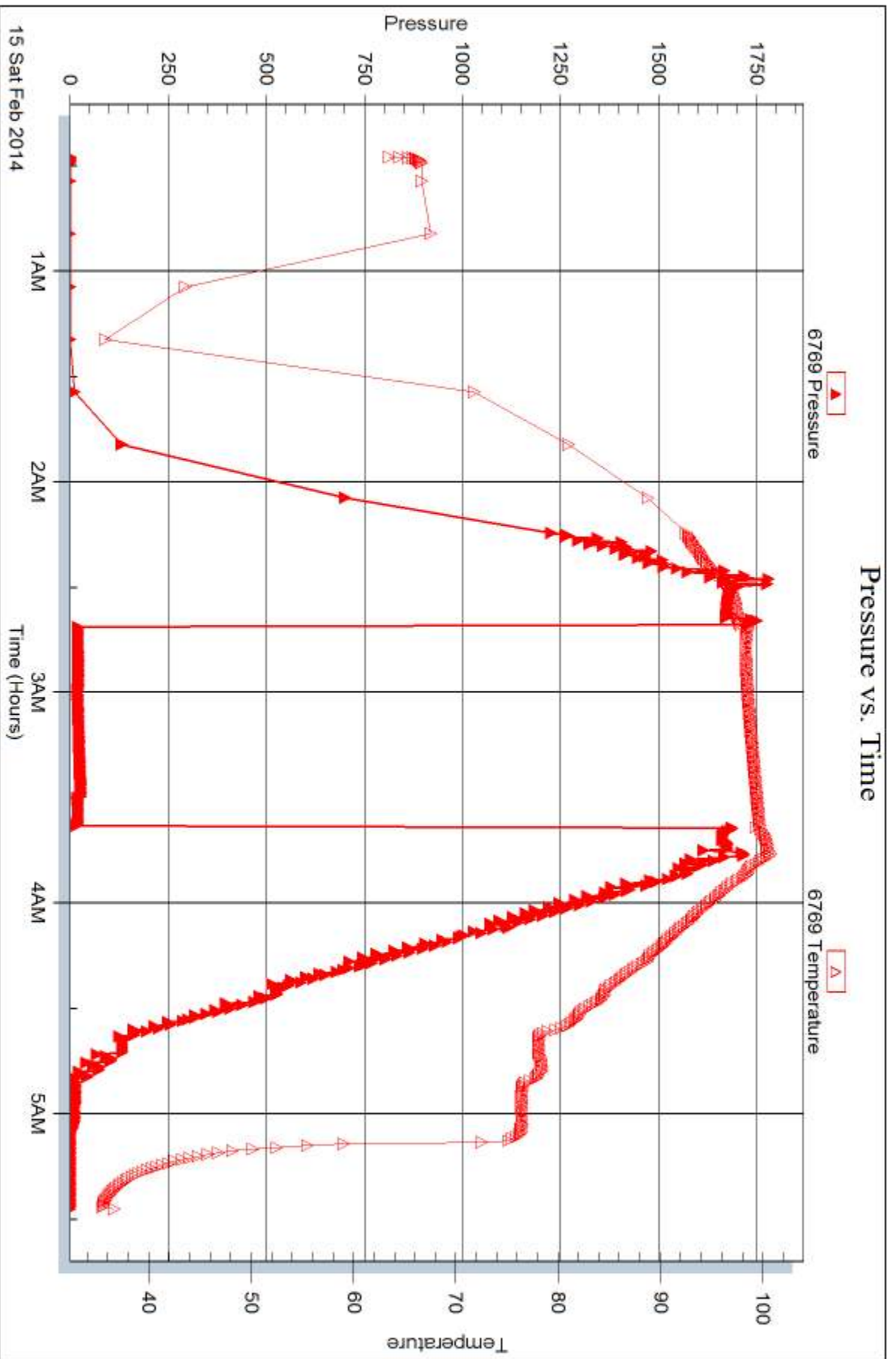
Serial #:

Laboratory Name:

Laboratory Location:

Recovery Comments:







## DRILL STEM TEST REPORT

Prepared For: **Carmen Schmitt, Inc.**

PO Box 47  
Great Bend, KS 67530-0047

ATTN: Dave Goldak

### **Arpin A #1-6**

### **6-9s-20w Rooks,KS**

Start Date: 2014.02.15 @ 23:32:51

End Date: 2014.02.16 @ 07:01:30

Job Ticket #: 53683                      DST #: 5

Trilobite Testing, Inc  
PO Box 362 Hays, KS 67601  
ph: 785-625-4778 fax: 785-625-5620

Printed: 2014.02.18 @ 15:45:34



**TRILOBITE TESTING, INC**

# DRILL STEM TEST REPORT

Carmen Schmitt, Inc.  
 PO Box 47  
 Great Bend, KS 67530-0047  
 ATTN: Dave Goldak

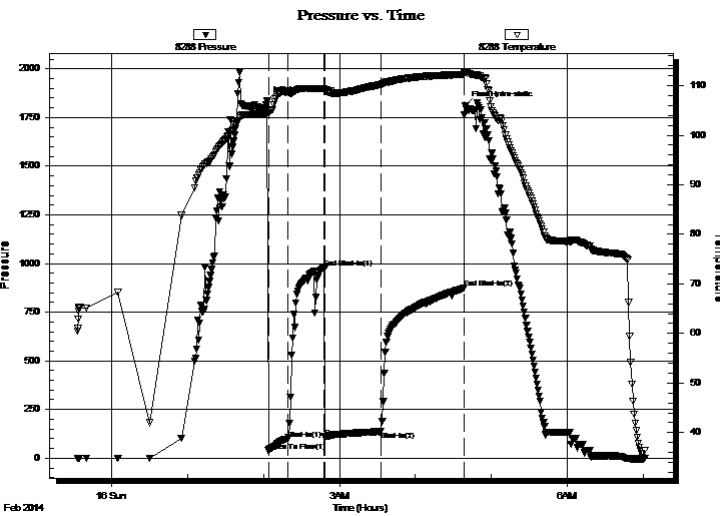
**6-9s-20w Rooks,KS**  
**Arpin A #1-6**  
 Job Ticket: 53683 **DST#: 5**  
 Test Start: 2014.02.15 @ 23:32:51

## GENERAL INFORMATION:

Formation: **Conglomerate**  
 Deviated: No Whipstock: ft (KB)  
 Time Tool Opened: 02:03:41  
 Time Test Ended: 07:01:30  
 Interval: **3668.00 ft (KB) To 3712.00 ft (KB) (TVD)**  
 Total Depth: 3712.00 ft (KB) (TVD)  
 Hole Diameter: 7.88 inches Hole Condition: Fair  
 Test Type: Conventional Bottom Hole (Reset)  
 Tester: Stuart Stover  
 Unit No: 44  
 Reference Elevations: 2132.00 ft (KB)  
 2130.00 ft (CF)  
 KB to GR/CF: 2.00 ft

**Serial #: 8288 Inside**  
 Press@RunDepth: 137.82 psig @ 3669.00 ft (KB) Capacity: 8000.00 psig  
 Start Date: 2014.02.15 End Date: 2014.02.16 Last Calib.: 2014.02.16  
 Start Time: 23:32:53 End Time: 07:01:31 Time On Btm: 2014.02.16 @ 02:02:41  
 Time Off Btm: 2014.02.16 @ 04:39:31

TEST COMMENT: IFP: 1" blow increasing to 6" blow  
 FFP: Surface blow slow increase to 3 1/2" blow



## PRESSURE SUMMARY

Time (Min.)	Pressure (psig)	Temp (deg F)	Annotation
0	1837.68	104.45	Initial Hydro-static
1	37.34	104.45	Open To Flow (1)
17	99.20	108.55	Shut-In(1)
45	978.02	109.35	End Shut-In(1)
46	109.33	108.92	Open To Flow (2)
91	137.82	110.23	Shut-In(2)
156	874.35	112.24	End Shut-In(2)
157	1811.89	112.66	Final Hydro-static

## Recovery

Length (ft)	Description	Volume (bbl)
60.00	Free oil	0.30
250.00	mdy oil 60% oil 40% mud	1.78

\* Recovery from multiple tests

## Gas Rates

Choke (inches)	Pressure (psig)	Gas Rate (Mcf/d)



**TRILOBITE  
TESTING, INC**

# DRILL STEM TEST REPORT

Carmen Schmitt, Inc.  
PO Box 47  
Great Bend, KS 67530-0047  
ATTN: Dave Goldak

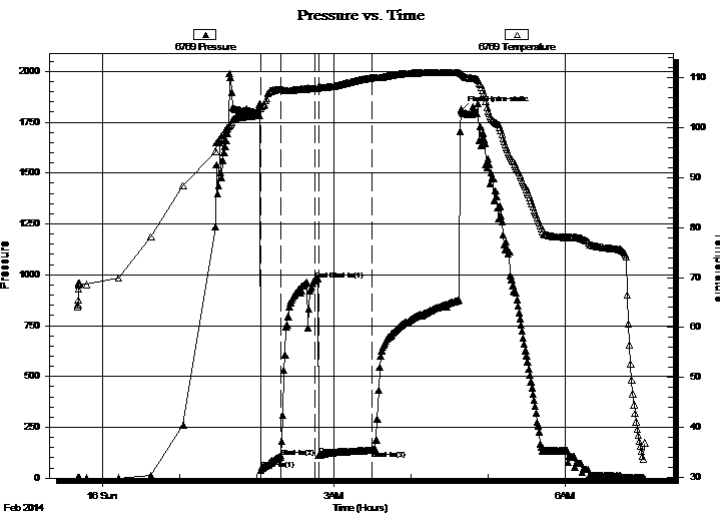
**6-9s-20w Rooks,KS**  
**Arpin A #1-6**  
Job Ticket: 53683 **DST#: 5**  
Test Start: 2014.02.15 @ 23:32:51

## GENERAL INFORMATION:

Formation: **Conglomerate**  
Deviated: No Whipstock: ft (KB)  
Time Tool Opened: 02:03:41  
Time Test Ended: 07:01:30  
Interval: **3668.00 ft (KB) To 3712.00 ft (KB) (TVD)**  
Total Depth: 3712.00 ft (KB) (TVD)  
Hole Diameter: 7.88 inches Hole Condition: Fair  
Test Type: Conventional Bottom Hole (Reset)  
Tester: Stuart Stover  
Unit No: 44  
Reference Elevations: 2132.00 ft (KB)  
2130.00 ft (CF)  
KB to GR/CF: 2.00 ft

**Serial #: 6769 Outside**  
Press@RunDepth: 974.79 psig @ 3669.00 ft (KB) Capacity: 8000.00 psig  
Start Date: 2014.02.15 End Date: 2014.02.16 Last Calib.: 2014.02.16  
Start Time: 23:41:00 End Time: 07:01:38 Time On Btm:  
Time Off Btm: 2014.02.16 @ 04:38:38

TEST COMMENT: IFP: 1" blow increasing to 6" blow  
FFP: Surface blow slow increase to 3 1/2" blow



## PRESSURE SUMMARY

Time (Min.)	Pressure (psig)	Temp (deg F)	Annotation
0	41.22	103.79	Shut-In(1)
16	103.66	107.65	Shut-In(2)
43	974.79	107.83	End Shut-In(1)
45	111.02	108.25	Open To Flow (1)
87	138.45	110.01	Shut-In(3)
156	1807.00	110.80	Final Hydro-static

## Recovery

Length (ft)	Description	Volume (bbl)
60.00	Free oil	0.30
250.00	mdy oil 60% oil 40% mud	1.78

\* Recovery from multiple tests

## Gas Rates

	Choke (inches)	Pressure (psig)	Gas Rate (Mcf/d)



**TRILOBITE  
TESTING, INC**

# DRILL STEM TEST REPORT

**TOOL DIAGRAM**

Carmen Schmitt, Inc.

**6-9s-20w Rooks,KS**

PO Box 47  
Great Bend, KS 67530-0047

**Arpin A #1-6**

Job Ticket: 53683

**DST#: 5**

ATTN: Dave Goldak

Test Start: 2014.02.15 @ 23:32:51

## Tool Information

Drill Pipe:	Length: 3416.00 ft	Diameter: 3.80 inches	Volume: 47.92 bbl	Tool Weight: 2400.00 lb
Heavy Wt. Pipe:	Length: 0.00 ft	Diameter: 0.00 inches	Volume: 0.00 bbl	Weight set on Packer: 25000.00 lb
Drill Collar:	Length: 250.00 ft	Diameter: 2.25 inches	Volume: 1.23 bbl	Weight to Pull Loose: 50000.00 lb
			<u>Total Volume: 49.15 bbl</u>	Tool Chased 0.00 ft
Drill Pipe Above KB:	25.00 ft			String Weight: Initial 44000.00 lb
Depth to Top Packer:	3668.00 ft			Final 44000.00 lb
Depth to Bottom Packer:	ft			
Interval between Packers:	44.00 ft			
Tool Length:	71.00 ft			
Number of Packers:	2	Diameter: 6.75 inches		

Tool Comments:

## Tool Description

**Length (ft) Serial No. Position Depth (ft) Accum. Lengths**

Tool Description	Length (ft)	Serial No.	Position	Depth (ft)	Accum. Lengths
Shut In Tool	5.00			3646.00	
Hydraulic tool	5.00			3651.00	
Jars	5.00			3656.00	
Safety Joint	3.00			3659.00	
Packer	5.00			3664.00	27.00 Bottom Of Top Packer
Packer	4.00			3668.00	
Stubb	1.00			3669.00	
Recorder	0.00	8288	Inside	3669.00	
Recorder	0.00	6769	Outside	3669.00	
Perforations	1.00			3670.00	
Change Over Sub	1.00			3671.00	
Drill Pipe	31.00			3702.00	
Change Over Sub	1.00			3703.00	
Perforations	5.00			3708.00	
Bullnose	4.00			3712.00	44.00 Bottom Packers & Anchor

**Total Tool Length: 71.00**





**TRILOBITE  
TESTING, INC**

# DRILL STEM TEST REPORT

## FLUID SUMMARY

Carmen Schmitt, Inc.

**6-9s-20w Rooks,KS**

PO Box 47  
Great Bend, KS 67530-0047

**Arpin A #1-6**

Job Ticket: 53683

**DST#: 5**

ATTN: Dave Goldak

Test Start: 2014.02.15 @ 23:32:51

### Mud and Cushion Information

Mud Type: Gel Chem

Mud Weight: 9.00 lb/gal

Viscosity: 55.00 sec/qt

Water Loss: 5.96 in<sup>3</sup>

Resistivity: ohm.m

Salinity: 1400.00 ppm

Filter Cake: inches

Cushion Type:

Cushion Length: ft

Cushion Volume: bbl

Gas Cushion Type:

Gas Cushion Pressure: psig

Oil API:

Water Salinity: deg API

ppm

### Recovery Information

Recovery Table

Length ft	Description	Volume bbl
60.00	Free oil	0.295
250.00	mdy oil 60% oil 40% mud	1.776

Total Length: 310.00 ft      Total Volume: 2.071 bbl

Num Fluid Samples: 0

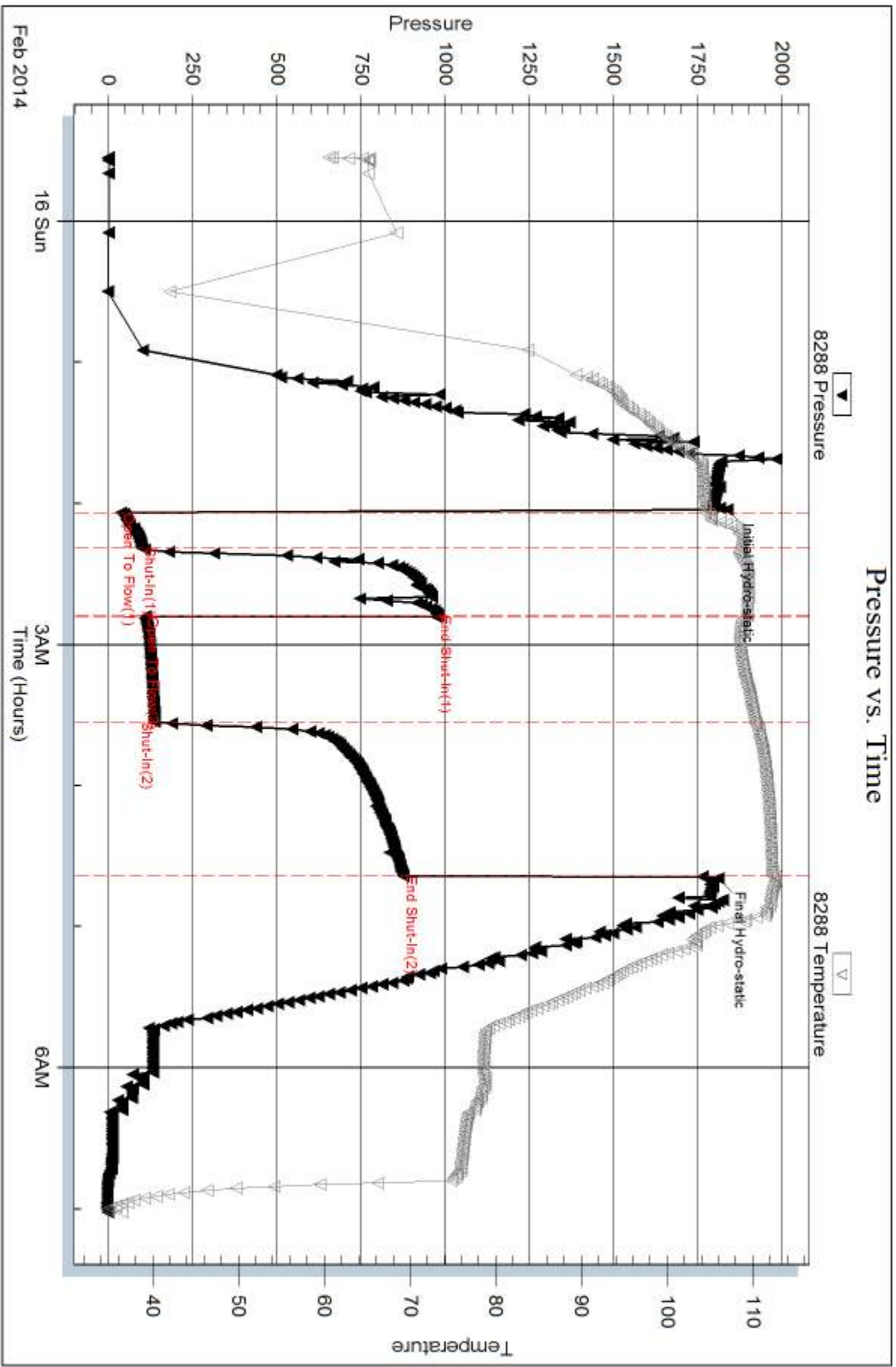
Num Gas Bombs: 0

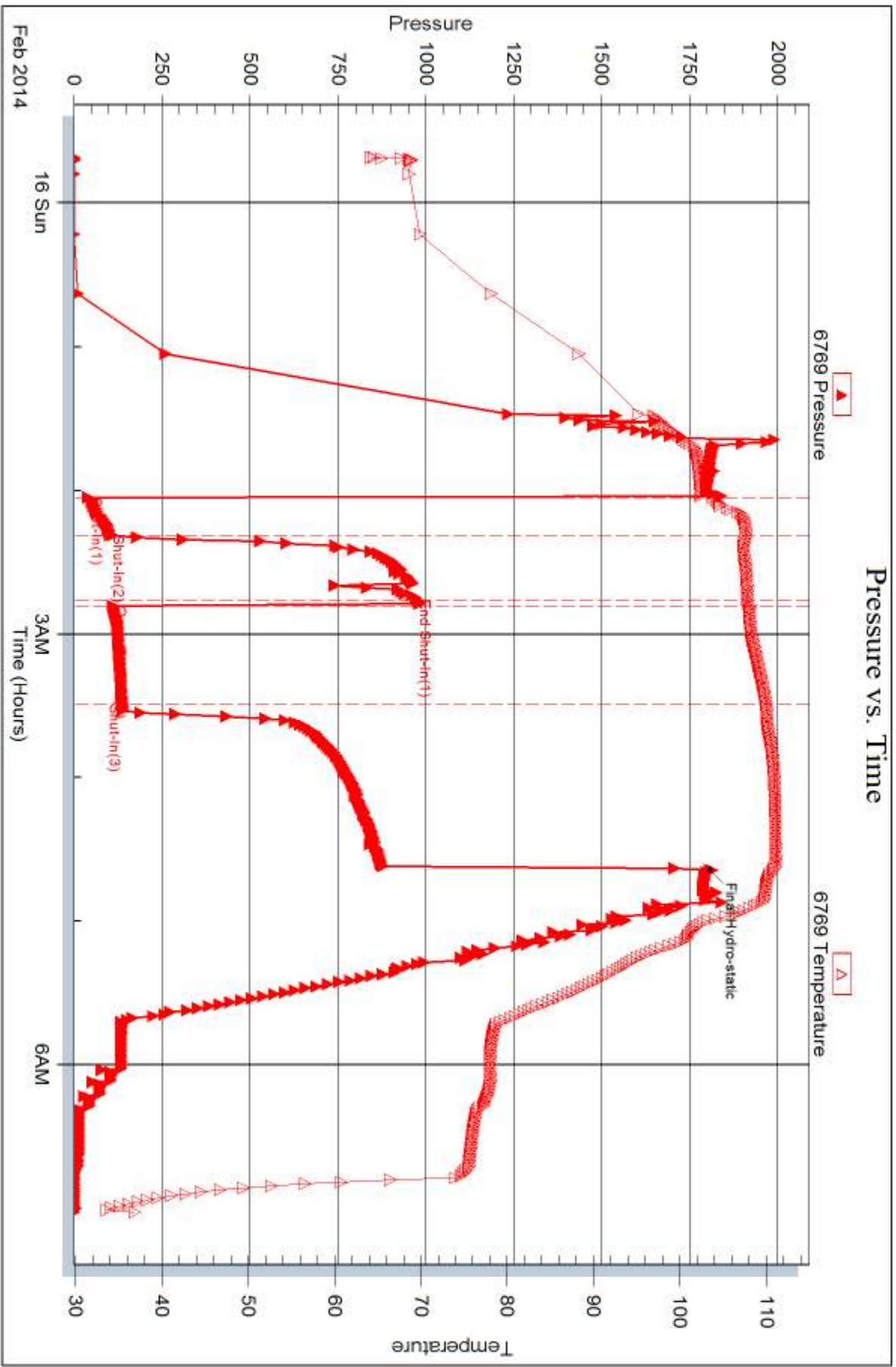
Serial #:

Laboratory Name:

Laboratory Location:

Recovery Comments:







## DRILL STEM TEST REPORT

Prepared For: **Carmen Schmitt, Inc.**

PO Box 47  
Great Bend, KS 67530-0047

ATTN: Dave Goldak

### **Arpin A #1-6**

#### **6-9s-20w Rooks,KS**

Start Date: 2014.02.16 @ 09:14:56

End Date: 2014.02.16 @ 17:15:35

Job Ticket #: 53684                      DST #: 6

Trilobite Testing, Inc  
PO Box 362 Hays, KS 67601  
ph: 785-625-4778 fax: 785-625-5620

Printed: 2014.02.18 @ 15:45:12



**TRILOBITE TESTING, INC**

# DRILL STEM TEST REPORT

Carmen Schmitt, Inc.  
 PO Box 47  
 Great Bend, KS 67530-0047  
 ATTN: Dave Goldak

**6-9s-20w Rooks,KS**  
**Arpin A #1-6**  
 Job Ticket: 53684 **DST#: 6**  
 Test Start: 2014.02.16 @ 09:14:56

## GENERAL INFORMATION:

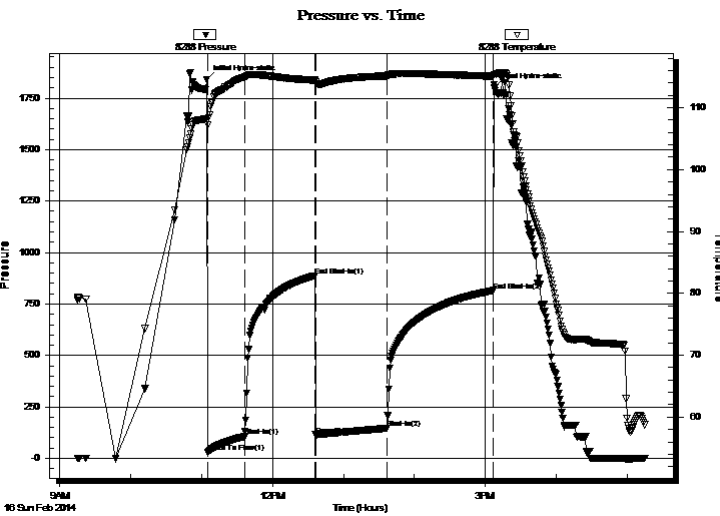
Formation: **Conglomerate**  
 Deviated: No Whipstock: ft (KB)  
 Time Tool Opened: 11:04:56  
 Time Test Ended: 17:15:35  
 Interval: **3668.00 ft (KB) To 3712.00 ft (KB) (TVD)**  
 Total Depth: 3712.00 ft (KB) (TVD)  
 Hole Diameter: 7.88 inches Hole Condition: Fair  
 Test Type: Conventional Bottom Hole (Reset)  
 Tester: Stuart Stover  
 Unit No: 44  
 Reference Elevations: 2132.00 ft (KB)  
 2130.00 ft (CF)  
 KB to GR/CF: 2.00 ft

## Serial #: 8288

Inside

Press@RunDepth: 146.19 psig @ 3669.00 ft (KB) Capacity: 8000.00 psig  
 Start Date: 2014.02.16 End Date: 2014.02.16 Last Calib.: 2014.02.16  
 Start Time: 09:14:58 End Time: 17:15:36 Time On Btm: 2014.02.16 @ 11:04:26  
 Time Off Btm: 2014.02.16 @ 15:07:56

TEST COMMENT: IFP: 1" blow increasing to 7" blow  
 FFP: Surface blow to 3" blow



## PRESSURE SUMMARY

Time (Min.)	Pressure (psig)	Temp (deg F)	Annotation
0	1841.43	108.26	Initial Hydro-static
1	27.63	107.19	Open To Flow (1)
32	105.26	114.95	Shut-In(1)
92	887.78	114.44	End Shut-In(1)
92	114.12	114.14	Open To Flow (2)
153	146.19	115.14	Shut-In(2)
243	812.63	115.10	End Shut-In(2)
244	1802.93	115.37	Final Hydro-static

## Recovery

Length (ft)	Description	Volume (bbl)
180.00	Free oil	0.89
120.00	Mdy oil 2% gas 48% oil 50% mud	1.05

\* Recovery from multiple tests

## Gas Rates

Choke (inches)	Pressure (psig)	Gas Rate (Mcf/d)



**TRILOBITE  
TESTING, INC**

# DRILL STEM TEST REPORT

**TOOL DIAGRAM**

Carmen Schmitt, Inc.

**6-9s-20w Rooks,KS**

PO Box 47  
Great Bend, KS 67530-0047

**Arpin A #1-6**

Job Ticket: 53684

**DST#: 6**

ATTN: Dave Goldak

Test Start: 2014.02.16 @ 09:14:56

## Tool Information

Drill Pipe:	Length: 3416.00 ft	Diameter: 3.80 inches	Volume: 47.92 bbl	Tool Weight:	2400.00 lb
Heavy Wt. Pipe:	Length: 0.00 ft	Diameter: 0.00 inches	Volume: 0.00 bbl	Weight set on Packer:	25000.00 lb
Drill Collar:	Length: 250.00 ft	Diameter: 2.25 inches	Volume: 1.23 bbl	Weight to Pull Loose:	50000.00 lb
			<u>Total Volume: 49.15 bbl</u>	Tool Chased	0.00 ft
Drill Pipe Above KB:	25.00 ft			String Weight: Initial	44000.00 lb
Depth to Top Packer:	3668.00 ft			Final	44000.00 lb
Depth to Bottom Packer:	ft				
Interval between Packers:	44.00 ft				
Tool Length:	71.00 ft				
Number of Packers:	2	Diameter: 6.75 inches			

Tool Comments:

## Tool Description

Tool Description	Length (ft)	Serial No.	Position	Depth (ft)	Accum. Lengths
Shut In Tool	5.00			3646.00	
Hydraulic tool	5.00			3651.00	
Jars	5.00			3656.00	
Safety Joint	3.00			3659.00	
Packer	5.00			3664.00	27.00 Bottom Of Top Packer
Packer	4.00			3668.00	
Stubb	1.00			3669.00	
Recorder	0.00	8288	Inside	3669.00	
Recorder	0.00	6769	Outside	3669.00	
Perforations	1.00			3670.00	
Change Over Sub	1.00			3671.00	
Drill Pipe	31.00			3702.00	
Change Over Sub	1.00			3703.00	
Perforations	5.00			3708.00	
Bullnose	4.00			3712.00	44.00 Bottom Packers & Anchor

**Total Tool Length: 71.00**



**TRILOBITE  
TESTING, INC**

# DRILL STEM TEST REPORT

## FLUID SUMMARY

Carmen Schmitt, Inc.

**6-9s-20w Rooks,KS**

PO Box 47  
Great Bend, KS 67530-0047

**Arpin A #1-6**

Job Ticket: 53684

**DST#: 6**

ATTN: Dave Goldak

Test Start: 2014.02.16 @ 09:14:56

### Mud and Cushion Information

Mud Type: Gel Chem

Cushion Type:

Oil API:

deg API

Mud Weight: 9.00 lb/gal

Cushion Length:

ft

Water Salinity:

ppm

Viscosity: 56.00 sec/qt

Cushion Volume:

bbbl

Water Loss: 5.98 in<sup>3</sup>

Gas Cushion Type:

Resistivity: ohm.m

Gas Cushion Pressure:

psig

Salinity: 1300.00 ppm

Filter Cake: inches

### Recovery Information

Recovery Table

Length ft	Description	Volume bbl
180.00	Free oil	0.885
120.00	Mdy oil 2% gas 48% oil 50% mud	1.046

Total Length: 300.00 ft      Total Volume: 1.931 bbl

Num Fluid Samples: 0

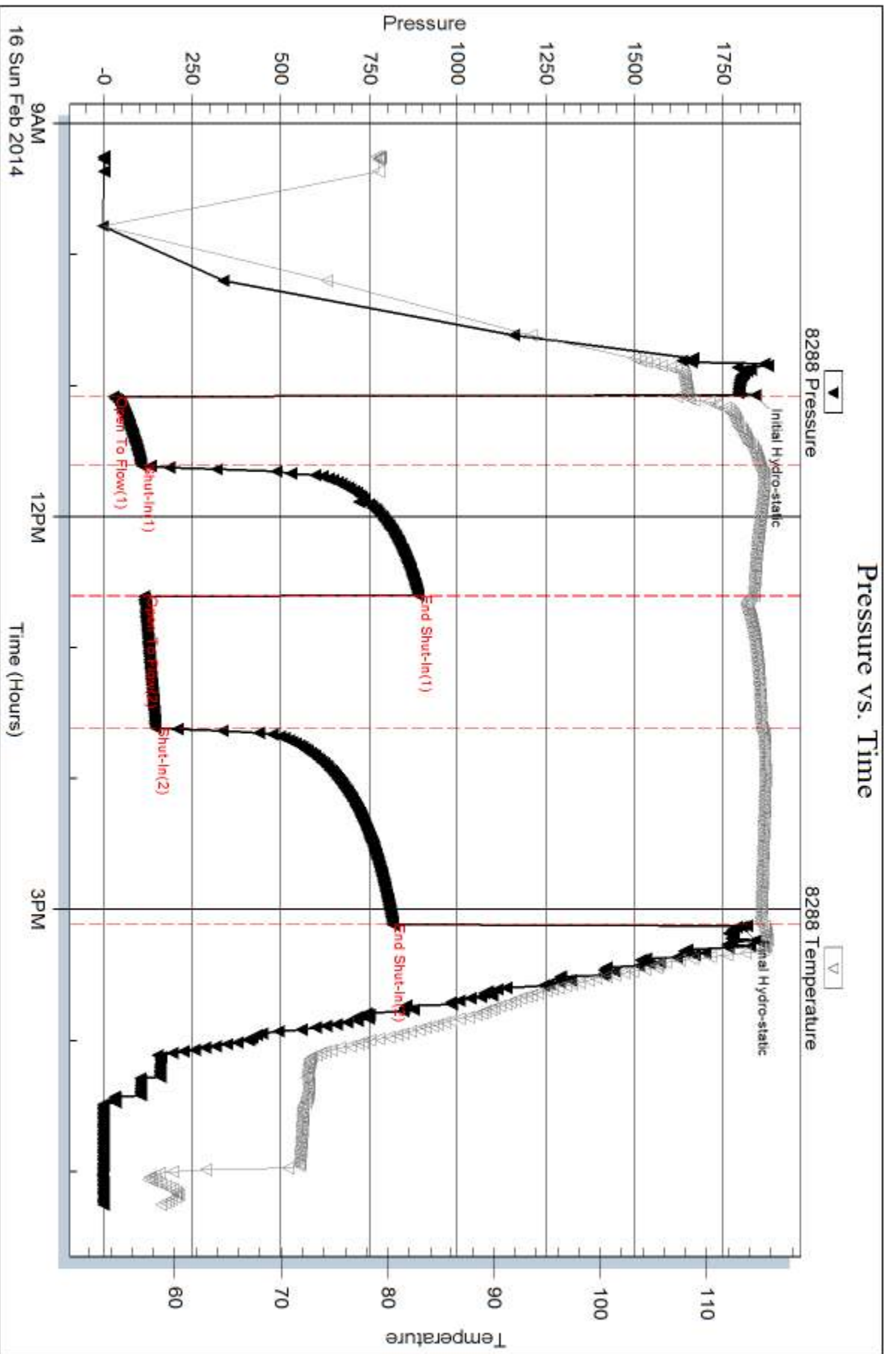
Num Gas Bombs: 0

Serial #:

Laboratory Name:

Laboratory Location:

Recovery Comments:







## DRILL STEM TEST REPORT

Prepared For: **Carmen Schmitt, Inc.**

PO Box 47  
Great Bend, KS 67530-0047

ATTN: Dave Goldak

### **Arpin A #1-6**

#### **6-9s-20w Rooks,KS**

Start Date: 2014.02.17 @ 01:34:17

End Date: 2014.02.17 @ 09:45:47

Job Ticket #: 53685                      DST #: 7

Trilobite Testing, Inc  
PO Box 362 Hays, KS 67601  
ph: 785-625-4778 fax: 785-625-5620

Printed: 2014.02.18 @ 15:44:42



**TRILOBITE  
TESTING, INC**

# DRILL STEM TEST REPORT

Carmen Schmitt, Inc.  
PO Box 47  
Great Bend, KS 67530-0047  
ATTN: Dave Goldak

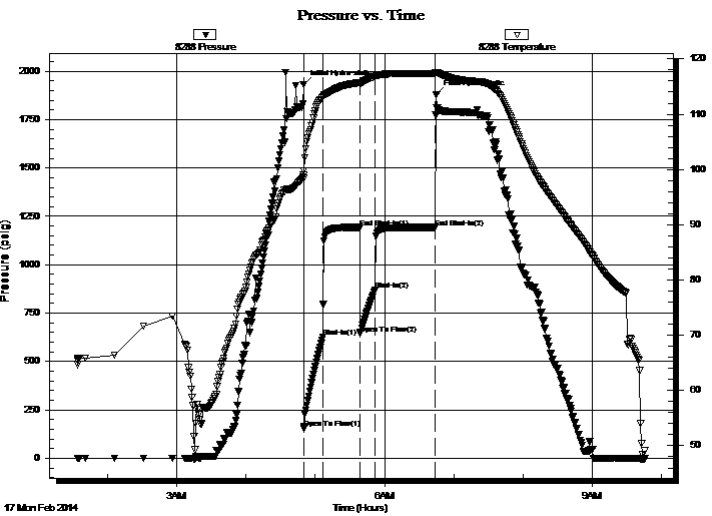
**6-9s-20w Rooks,KS**  
**Arpin A #1-6**  
Job Ticket: 53685 **DST#: 7**  
Test Start: 2014.02.17 @ 01:34:17

## GENERAL INFORMATION:

Formation: **Arbuckle**  
Deviated: No Whipstock: ft (KB)  
Time Tool Opened: 04:49:57  
Time Test Ended: 09:45:47  
Interval: **3732.00 ft (KB) To 3736.00 ft (KB) (TVD)**  
Total Depth: 3316.00 ft (KB) (TVD)  
Hole Diameter: 7.88 inches Hole Condition: Fair  
Test Type: Conventional Bottom Hole (Reset)  
Tester: Stuart Stover  
Unit No: 44  
Reference Elevations: 2132.00 ft (KB)  
2130.00 ft (CF)  
KB to GR/CF: 2.00 ft

**Serial #: 8288** **Inside**  
Press@RunDepth: 867.92 psig @ 3733.00 ft (KB) Capacity: 8000.00 psig  
Start Date: 2014.02.17 End Date: 2014.02.17 Last Calib.: 2014.02.17  
Start Time: 01:34:19 End Time: 09:45:47 Time On Btm: 2014.02.17 @ 04:49:47  
Time Off Btm: 2014.02.17 @ 06:44:56

TEST COMMENT: IFP: BOB in 1"  
FFP: BOB in 1"



## PRESSURE SUMMARY

Time (Min.)	Pressure (psig)	Temp (deg F)	Annotation
0	1931.49	98.93	Initial Hydro-static
1	153.28	98.44	Open To Flow (1)
17	626.57	113.07	Shut-In(1)
49	1191.79	115.72	End Shut-In(1)
49	644.29	115.50	Open To Flow (2)
62	867.92	116.84	Shut-In(2)
114	1192.52	117.33	End Shut-In(2)
116	1878.36	117.57	Final Hydro-static

## Recovery

Length (ft)	Description	Volume (bbl)
1980.00	salt w tr	25.50

\* Recovery from multiple tests

## Gas Rates

	Choke (inches)	Pressure (psig)	Gas Rate (Mcf/d)





**TRILOBITE  
TESTING, INC**

# DRILL STEM TEST REPORT

**TOOL DIAGRAM**

Carmen Schmitt, Inc.

**6-9s-20w Rooks,KS**

PO Box 47  
Great Bend, KS 67530-0047

**Arpin A #1-6**

Job Ticket: 53685

**DST#: 7**

ATTN: Dave Goldak

Test Start: 2014.02.17 @ 01:34:17

## Tool Information

Drill Pipe:	Length: 3486.00 ft	Diameter: 3.80 inches	Volume: 48.90 bbl	Tool Weight:	2400.00 lb
Heavy Wt. Pipe:	Length: 0.00 ft	Diameter: 0.00 inches	Volume: 0.00 bbl	Weight set on Packer:	25000.00 lb
Drill Collar:	Length: 250.00 ft	Diameter: 2.25 inches	Volume: 1.23 bbl	Weight to Pull Loose:	62000.00 lb
			<u>Total Volume: 50.13 bbl</u>	Tool Chased	2.00 ft
Drill Pipe Above KB:	31.00 ft			String Weight: Initial	50000.00 lb
Depth to Top Packer:	3732.00 ft			Final	58000.00 lb
Depth to Bottom Packer:	ft				
Interval between Packers:	4.00 ft				
Tool Length:	31.00 ft				
Number of Packers:	2	Diameter: 6.75 inches			

Tool Comments:

## Tool Description

Tool Description	Length (ft)	Serial No.	Position	Depth (ft)	Accum. Lengths
Shut In Tool	5.00			3710.00	
Hydraulic tool	5.00			3715.00	
Jars	5.00			3720.00	
Safety Joint	3.00			3723.00	
Packer	5.00			3728.00	27.00 Bottom Of Top Packer
Packer	4.00			3732.00	
Stubb	1.00			3733.00	
Recorder	0.00	8288	Inside	3733.00	
Recorder	0.00	8521	Outside	3733.00	
Bullnose	3.00			3736.00	4.00 Bottom Packers & Anchor
<b>Total Tool Length:</b>	<b>31.00</b>				



**TRILOBITE  
TESTING, INC**

# DRILL STEM TEST REPORT

## FLUID SUMMARY

Carmen Schmitt, Inc.

**6-9s-20w Rooks,KS**

PO Box 47  
Great Bend, KS 67530-0047

**Arpin A #1-6**

Job Ticket: 53685

**DST#: 7**

ATTN: Dave Goldak

Test Start: 2014.02.17 @ 01:34:17

### Mud and Cushion Information

Mud Type: KCl	Cushion Type:	Oil API:	deg API
Mud Weight: 9.00 lb/gal	Cushion Length: ft	Water Salinity:	65000 ppm
Viscosity: 56.00 sec/qt	Cushion Volume: bbl		
Water Loss: 5.99 in <sup>3</sup>	Gas Cushion Type:		
Resistivity: ohm.m	Gas Cushion Pressure: psig		
Salinity: 1300.00 ppm			
Filter Cake: inches			

### Recovery Information

Recovery Table

Length ft	Description	Volume bbl
1980.00	salt w tr	25.497

Total Length: 1980.00 ft      Total Volume: 25.497 bbl

Num Fluid Samples: 0

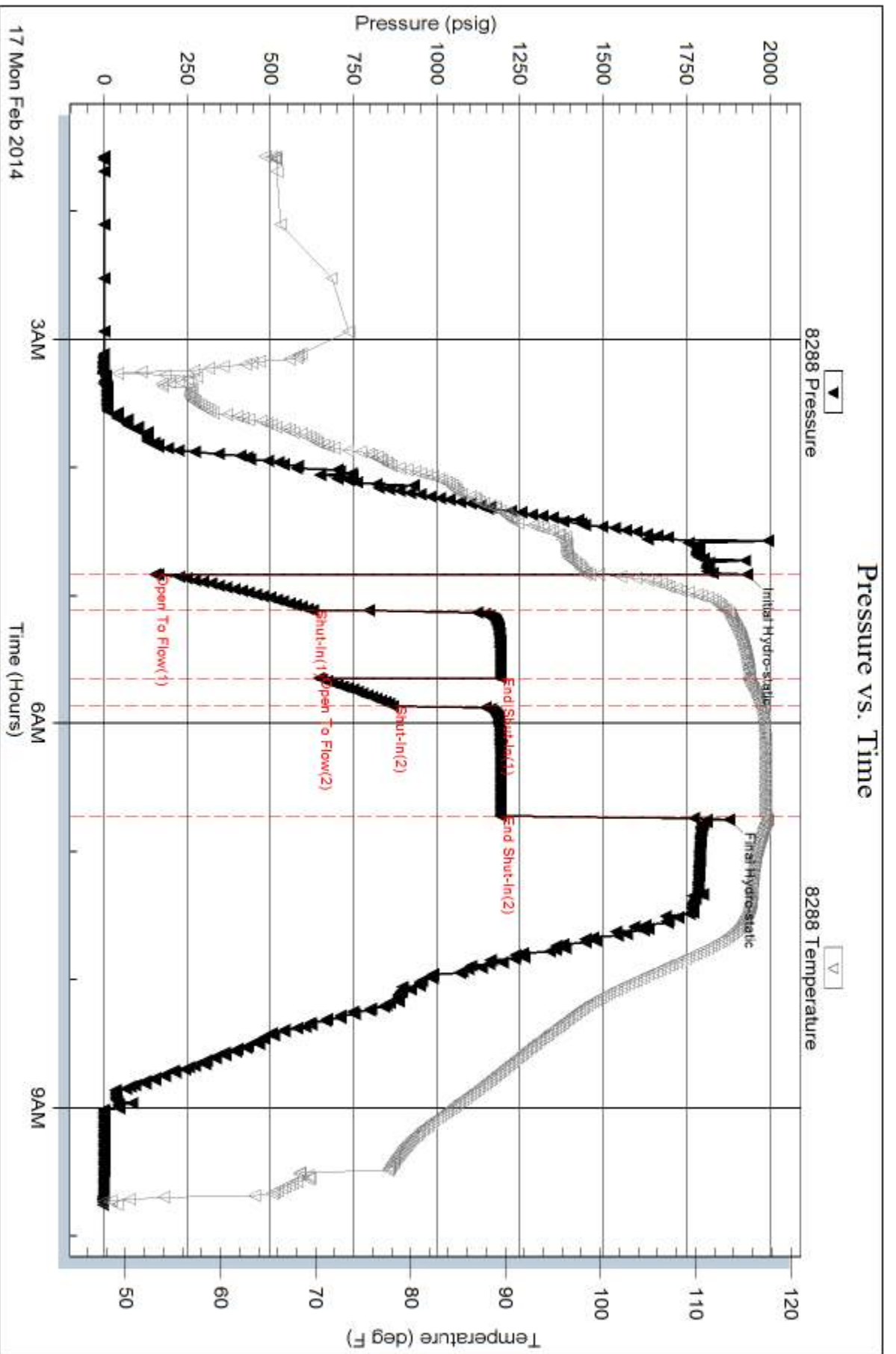
Num Gas Bombs: 0

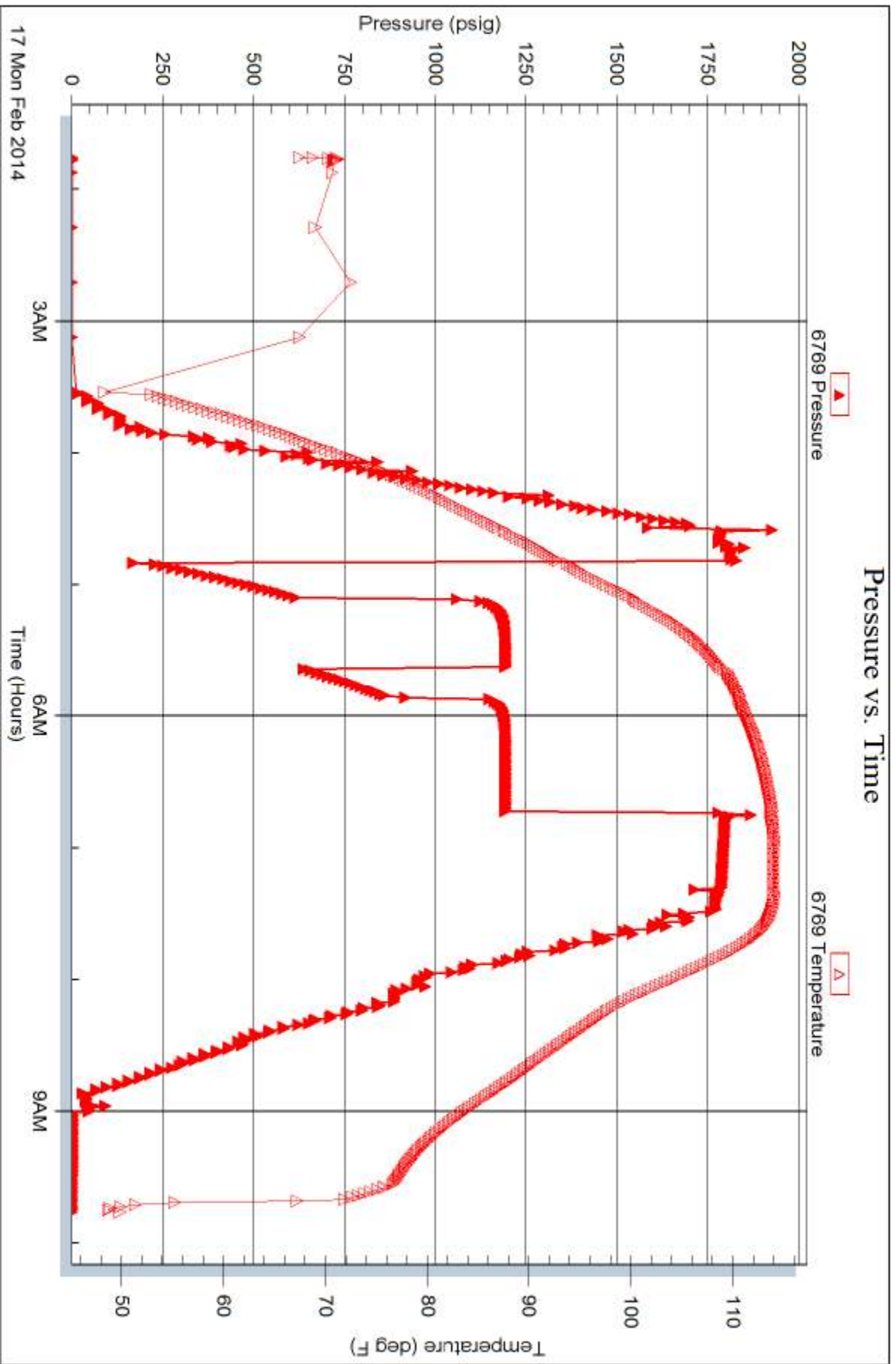
Serial #:

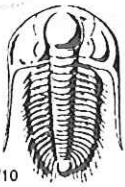
Laboratory Name:

Laboratory Location:

Recovery Comments: RW 0.1 @ 76 deg







# TRILOBITE TESTING INC.

1515 Commerce Parkway • Hays, Kansas 67601

## Test Ticket

NO. 53679

Well Name & No. Arpin A # 1-6 Test No. 1 Date 2-12-14  
 Company Carmen Schmitt, INC Elevation 2132 KB 2130 GL  
 Address PO Box 47 Great Bend, KS. 67530-0047  
 Co. Rep / Geo. Dave Goldak Rig Mallard  
 Location: Sec. 6 Twp. 095 Rge. 20W Co. Rooks State K5

Interval Tested 3306 - 3316 Zone Tested ORoad  
 Anchor Length 10 Drill Pipe Run 3044 Mud Wt. 8.9  
 Top Packer Depth 3301 Drill Collars Run 250 Vis 47  
 Bottom Packer Depth 3306 Wt. Pipe Run 0 WL 5.4  
 Total Depth 3316 Chlorides 1400 ppm System LCM 2  
 Blow Description TIP: Surface blow to 1" Blow  
FFP: 1/2" Blow to 1 1/2" Blow

Rec	Feet of	%gas	%oil	%water	%mud
<u>120</u>	<u>moly Wtn</u>				

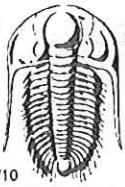
Rec Total 120' BHT 108 Gravity \_\_\_\_\_ API RW .17 @ 73°F Chlorides 38000 ppm

(A) Initial Hydrostatic <u>1470</u>	<input checked="" type="checkbox"/> Test <u>1150</u>	T-On Location _____
(B) First Initial Flow <u>18</u>	<input checked="" type="checkbox"/> Jars <u>250</u>	T-Started <u>900</u>
(C) First Final Flow <u>36</u>	<input checked="" type="checkbox"/> Safety Joint <u>75</u>	T-Open <u>1155</u>
(D) Initial Shut-In <u>1031</u>	<input type="checkbox"/> Circ Sub _____	T-Pulled <u>220</u>
(E) Second Initial Flow <u>39</u>	<input type="checkbox"/> Hourly Standby _____	T-Out <u>345</u>
(F) Second Final Flow <u>81</u>	<input checked="" type="checkbox"/> Mileage <u>94rt 145.70</u>	Comments _____
(G) Final Shut-In <u>1020</u>	<input type="checkbox"/> Sampler _____	
(H) Final Hydrostatic <u>1418</u>	<input type="checkbox"/> Straddle _____	<input type="checkbox"/> Ruined Shale Packer _____
	<input type="checkbox"/> Shale Packer _____	<input type="checkbox"/> Ruined Packer _____
Initial Open <u>15</u>	<input type="checkbox"/> Extra Packer _____	<input type="checkbox"/> Extra Copies _____
Initial Shut-In <u>30</u>	<input type="checkbox"/> Extra Recorder _____	Sub Total <u>0</u>
Final Flow <u>45</u>	<input type="checkbox"/> Day Standby _____	Total <u>1620.70</u>
Final Shut-In <u>60</u>	<input type="checkbox"/> Accessibility _____	MP/DST Disc't _____
	Sub Total <u>1620.70</u>	

Approved By [Signature] Our Representative Stuart Stover

Trilobite Testing Inc. shall not be liable for damaged of any kind of the property or personnel of the one for whom a test is made, or for any loss suffered or sustained, directly or indirectly, through the use of its equipment, or its statements or opinion concerning the results of any test, tools lost or damaged in the hole shall be paid for at cost by the party for whom the test is made.





# TRILOBITE TESTING INC.

1515 Commerce Parkway • Hays, Kansas 67601

## Test Ticket

NO. 53680

4/10

Well Name & No. Arpin "A" 1-6 Test No. 2 Date 2-13-2014  
 Company Carmen Schmitt Inc Elevation 2137 KB 2130 GL  
 Address PO Box 47 Great Bend, KS, 67530-0047  
 Co. Rep / Geo. DAVE GOLDAK Rig MALLOD  
 Location: Sec. 6 Twp. 095 Rge. 20W Co. ROOKS State KS

Interval Tested 3404-3432 Zone Tested LKC "C"  
 Anchor Length 24 Drill Pipe Run 3160 Mud Wt. 8.9  
 Top Packer Depth 3401 Drill Collars Run 250 Vis 50  
 Bottom Packer Depth 3406 Wt. Pipe Run 0 WL 5.8  
 Total Depth 3432 Chlorides 1400 ppm System LCM 2  
 Blow Description IFP - 4 1/2" blow increasing to 8" Blow  
FFP - Surface blow increasing to 6" Blow

Rec	Feet of	%gas	%oil	%water	%mud
<u>420</u>	<u>mdy wtr</u>		<u>98</u>	<u>2</u>	

Rec Total 420 BHT 112 Gravity \_\_\_\_\_ API RW 0.13@ 49° F Chlorides 85,000 ppm

(A) Initial Hydrostatic <u>11077</u>	<input checked="" type="checkbox"/> Test <u>1150</u>	T-On Location _____
(B) First Initial Flow <u>47</u>	<input checked="" type="checkbox"/> Jars <u>250</u>	T-Started <u>4:15</u>
(C) First Final Flow <u>1345</u>	<input checked="" type="checkbox"/> Safety Joint <u>75</u>	T-Open <u>5:45</u>
(D) Initial Shut-In <u>998</u>	<input type="checkbox"/> Circ Sub _____	T-Pulled <u>8:15</u>
(E) Second Initial Flow <u>136</u>	<input type="checkbox"/> Hourly Standby _____	T-Out <u>930</u>
(F) Second Final Flow <u>230</u>	<input type="checkbox"/> Mileage <u>145.70</u>	Comments _____
(G) Final Shut-In <u>988</u>	<input type="checkbox"/> Sampler _____	
(H) Final Hydrostatic <u>1665</u>	<input type="checkbox"/> Straddle _____	<input type="checkbox"/> Ruined Shale Packer _____
	<input type="checkbox"/> Shale Packer _____	<input type="checkbox"/> Ruined Packer _____
Initial Open <u>15</u>	<input type="checkbox"/> Extra Packer _____	<input type="checkbox"/> Extra Copies _____
Initial Shut-In <u>30</u>	<input type="checkbox"/> Extra Recorder _____	Sub Total <u>0</u>
Final Flow <u>45</u>	<input type="checkbox"/> Day Standby _____	Total <u>1620.70</u>
Final Shut-In <u>60</u>	<input type="checkbox"/> Accessibility _____	MP/DST Disc't _____
	Sub Total <u>1620.70</u>	

Approved By [Signature] Our Representative [Signature]

Trilobite Testing Inc. shall not be liable for damaged of any kind of the property or personnel of the one for whom a test is made, or for any loss suffered or sustained, directly or indirectly, through the use of its equipment, or its statements or opinion concerning the results of any test, tools lost or damaged in the hole shall be paid for at cost by the party for whom the test is made.



# TRILOBITE TESTING INC.

1515 Commerce Parkway • Hays, Kansas 67601

## Test Ticket

NO. 53681

Well Name & No. Arpin "A" 1-6 Test No. 3 Date 2-14-2014  
 Company Carmen Schmitt, INC Elevation 2132 KB 2130 GL  
 Address PO Box 47 Great Bend KS 67530-0047  
 Co. Rep / Geo. DAVE Goldax Rig Mallard  
 Location: Sec. 6 Twp. 09S Rge. 20W Co. Roos State KS

Interval Tested 3459-3472 Zone Tested LKC "P"  
 Anchor Length 13 Drill Pipe Run 3198 Mud Wt. 9.3  
 Top Packer Depth 3454 Drill Collars Run 250 Vis 56  
 Bottom Packer Depth 3459 Wt. Pipe Run 0 WL 6.0  
 Total Depth 3472 Chlorides 1500 ppm System LCM 2  
 Blow Description IFF: BOB IN 3 MIN  
FFP: BOB IN 7 MIN

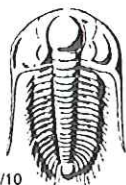
Rec	Feet of	%gas	%oil	%water	%mud
<u>660</u>	<u>Salt Wtr</u>				

Rec Total 660 BHT 114° Gravity \_\_\_\_\_ API RW .09 @ 70° F Chlorides 80,000 ppm

(A) Initial Hydrostatic <u>1738</u>	<input checked="" type="checkbox"/> Test <u>1150</u>	T-On Location <u>6:45</u>
(B) First Initial Flow <u>38</u>	<input checked="" type="checkbox"/> Jars <u>250</u>	T-Started <u>700</u>
(C) First Final Flow <u>238</u>	<input checked="" type="checkbox"/> Safety Joint <u>75</u>	T-Open <u>920</u>
(D) Initial Shut-In <u>978</u>	<input type="checkbox"/> Circ Sub _____	T-Pulled <u>1105</u>
(E) Second Initial Flow <u>245</u>	<input type="checkbox"/> Hourly Standby _____	T-Out <u>1245</u>
(F) Second Final Flow <u>360</u>	<input type="checkbox"/> Mileage <u>145.70</u>	Comments _____
(G) Final Shut-In <u>975</u>	<input type="checkbox"/> Sampler _____	_____
(H) Final Hydrostatic <u>1711</u>	<input type="checkbox"/> Straddle _____	<input type="checkbox"/> Ruined Shale Packer _____
Initial Open <u>15</u>	<input type="checkbox"/> Shale Packer _____	<input type="checkbox"/> Ruined Packer _____
Initial Shut-In <u>30</u>	<input type="checkbox"/> Extra Packer _____	<input type="checkbox"/> Extra Copies _____
Final Flow <u>15</u>	<input type="checkbox"/> Extra Recorder _____	Sub Total <u>0</u>
Final Shut-In <u>45</u>	<input type="checkbox"/> Day Standby _____	Total <u>1620.70</u>
	<input type="checkbox"/> Accessibility _____	MP/DST Disc't _____
	Sub Total <u>1620.70</u>	

Approved By [Signature] Our Representative STUART STOVER

Trilobite Testing Inc. shall not be liable for damaged of any kind of the property or personnel of the one for whom a test is made, or for any loss suffered or sustained, directly or indirectly, through the use of its equipment, or its statements or opinion concerning the results of any test, tools lost or damaged in the hole shall be paid for at cost by the party for whom the test is made.



# TRILOBITE TESTING INC.

1515 Commerce Parkway • Hays, Kansas 67601

## Test Ticket

NO. 53682

4/10

Well Name & No. Arpiv "A" 1-6 Test No. 4 Date 2-15-2014  
 Company Carmen Schmitt, INC Elevation 2132 KB 3130 GL  
 Address PO Box 47 Great Bend KS 67530-0047  
 Co. Rep / Geo. DAVE Goldax Rig Mallard  
 Location: Sec. 6 Twp. 09S Rge. 20W Co. ROOKS State KS

Interval Tested 3502 - 3560 Zone Tested LKC H-T  
 Anchor Length 58 Drill Pipe Run 3220 Mud Wt. 9.3  
 Top Packer Depth 3497 Drill Collars Run 250 Vis SG  
 Bottom Packer Depth 3502 Wt. Pipe Run 0 WL 6.0  
 Total Depth 3560 Chlorides 1500 ppm System LCM 2  
 Blow Description ZFP - SURFACE BLOW DIED IN 12 MIN.  
FFP - SURFACE BLOW DIED IN 2 MIN.

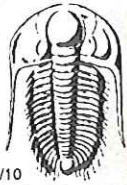
Rec	Feet of	%gas	%oil	%water	%mud
<u>5</u>	<u>Dolg MUD</u>				
Rec	Feet of	%gas	%oil	%water	%mud
Rec	Feet of	%gas	%oil	%water	%mud
Rec	Feet of	%gas	%oil	%water	%mud
Rec	Feet of	%gas	%oil	%water	%mud

Rec Total 5' BHT 104 Gravity \_\_\_\_\_ API RW \_\_\_\_\_ @ \_\_\_\_\_ °F Chlorides 1500 ppm

(A) Initial Hydrostatic <u>1730</u>	<input checked="" type="checkbox"/> Test <u>1150</u>	T-On Location <u>1200</u>
(B) First Initial Flow <u>20</u>	<input checked="" type="checkbox"/> Jars <u>250</u>	T-Started <u>1215</u>
(C) First Final Flow <u>18</u>	<input checked="" type="checkbox"/> Safety Joint <u>75</u>	T-Open <u>245</u>
(D) Initial Shut-In <u>19</u>	<input type="checkbox"/> Circ Sub _____	T-Pulled <u>335</u>
(E) Second Initial Flow <u>19</u>	<input type="checkbox"/> Hourly Standby _____	T-Out <u>515</u>
(F) Second Final Flow <u>19</u>	<input type="checkbox"/> Mileage <u>145.70</u>	Comments <u>Pulled Tool after 2ND open</u>
(G) Final Shut-In _____	<input type="checkbox"/> Sampler _____	
(H) Final Hydrostatic <u>1686</u>	<input type="checkbox"/> Straddle _____	<input type="checkbox"/> Ruined Shale Packer _____
Initial Open <u>15</u>	<input type="checkbox"/> Shale Packer _____	<input type="checkbox"/> Ruined Packer _____
Initial Shut-In <u>30</u>	<input type="checkbox"/> Extra Packer _____	<input type="checkbox"/> Extra Copies _____
Final Flow <u>5</u>	<input type="checkbox"/> Extra Recorder _____	Sub Total <u>0</u>
Final Shut-In <u>NONE</u>	<input type="checkbox"/> Day Standby _____	Total <u>1620.70</u>
	<input type="checkbox"/> Accessibility _____	MP/DST Disc't _____
	Sub Total <u>1620.70</u>	

Approved By [Signature] Our Representative STUART Stover

Trilobite Testing Inc. shall not be liable for damaged of any kind of the property or personnel of the one for whom a test is made, or for any loss suffered or sustained, directly or indirectly, through the use of its equipment, or its statements or opinion concerning the results of any test, tools lost or damaged in the hole shall be paid for at cost by the party for whom the test is made.



# TRILOBITE TESTING INC.

1515 Commerce Parkway • Hays, Kansas 67601

## Test Ticket

NO. 53683

4/10

Well Name & No. Arpin A 1-6 Test No. 5 Date 2-14-2014  
 Company Carmen Schmitt, Inc Elevation 2132 KB 2130 GL  
 Address PO Box 47 Great Bend Ks 67530-0047  
 Co. Rep / Geo. Dave Goldak Rig Mallard  
 Location: Sec. 6 Twp. 095 Rge. 20W Co. Rooks State Ks

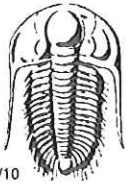
Interval Tested 3668-3712 Zone Tested Conglomerate  
 Anchor Length 44' Drill Pipe Run 3416 Mud Wt. 9.2  
 Top Packer Depth 3463 Drill Collars Run 250 Vis 55  
 Bottom Packer Depth 3668 Wt. Pipe Run 0 WL 6.0  
 Total Depth 3712 Chlorides 1400 ppm System LCM 2#  
 Blow Description IFP - 1" Blow increasing to 6" blow  
IFP - Surface blow slow increase to 3 1/2" blow

Rec	Feet of	%gas	%oil	%water	%mud
<u>60</u>	<u>Free oil</u>				
<u>250</u>	<u>mdy oil</u>		<u>60%</u>		<u>40%</u>

Rec Total \_\_\_\_\_ BHT \_\_\_\_\_ Gravity \_\_\_\_\_ API RW \_\_\_\_\_ @ \_\_\_\_\_ ° F Chlorides \_\_\_\_\_ ppm

(A) Initial Hydrostatic 1838  Test 1150 T-On Location 11:30  
 (B) First Initial Flow 37  Jars 250 T-Started 11:40  
 (C) First Final Flow 180  Safety Joint 75 T-Open 2:00  
 (D) Initial Shut-In 971  Circ Sub \_\_\_\_\_ T-Pulled 4:30  
 (E) Second Initial Flow 109  Hourly Standby \_\_\_\_\_ T-Out \_\_\_\_\_  
 (F) Second Final Flow 136  Mileage 145.70 Comments \_\_\_\_\_  
 (G) Final Shut-In 868  Sampler \_\_\_\_\_  
 (H) Final Hydrostatic 1764  Straddle \_\_\_\_\_  Ruined Shale Packer \_\_\_\_\_  
 Shale Packer \_\_\_\_\_  Ruined Packer \_\_\_\_\_  
 Extra Packer \_\_\_\_\_  Extra Copies \_\_\_\_\_  
 Initial Open 15  Extra Recorder \_\_\_\_\_ Sub Total 0  
 Initial Shut-In 30  Day Standby \_\_\_\_\_ Total 1620.70  
 Final Flow 45  Accessibility \_\_\_\_\_ MP/DST Disc't \_\_\_\_\_  
 Final Shut-In 60  Sub Total 1620.70

Approved By [Signature] Our Representative Stuart Stover  
 Trilobite Testing Inc. shall not be liable for damaged or any kind of the property or personnel of the one for whom a test is made, or for any loss suffered or sustained, directly or indirectly, through the use of its equipment, or its statements or opinion concerning the results of any test, tools lost or damaged in the hole shall be paid for at cost by the party for whom the test is made.



# TRILOBITE TESTING INC.

1515 Commerce Parkway • Hays, Kansas 67601

## Test Ticket

NO. 53684

4/10

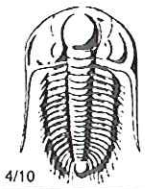
Well Name & No. Arpin "A" 1-4 Test No. 6 Date 2-16-2014  
 Company CARMEN Schmitt, INC. Elevation 2132 KB 2130 GL  
 Address PO Box 47 Great Bend, KS 67530-0047  
 Co. Rep / Geo. DAVE Coldak Rig Mallard  
 Location: Sec. 6 Twp. 09 S Rge. 20W Co. ROOKS State KS

Interval Tested 3668-3712 Zone Tested Conglomerate  
 Anchor Length 44' Drill Pipe Run 3416 Mud Wt. 9.3  
 Top Packer Depth 3663 Drill Collars Run 250 Vis 56  
 Bottom Packer Depth 3668 Wt. Pipe Run 0 WL 6.0  
 Total Depth 3712 Chlorides 1300 ppm System LCM 2  
 Blow Description FFP: 1" blow increasing to 7" blow  
FFP:

Rec	Feet of	%gas	%oil	%water	%mud
<u>180</u>	<u>Free oil</u>				
<u>120</u>	<u>mdy oil</u>	<u>2</u>	<u>48</u>	<u>50</u>	
Rec	Feet of	%gas	%oil	%water	%mud
Rec	Feet of	%gas	%oil	%water	%mud

Rec Total 300 BHT 116° Gravity 33 API RW @ ° F Chlorides ppm  
 (A) Initial Hydrostatic 1841  Test 1150 T-On Location 11:30 PM 2-15-14  
 (B) First Initial Flow 28  Jars 250 T-Started 9:30  
 (C) First Final Flow 105  Safety Joint 75 T-Open 11:05  
 (D) Initial Shut-In 888  Circ Sub T-Pulled 3:05  
 (E) Second Initial Flow 114  Hourly Standby T-Out 4:45  
 (F) Second Final Flow 148  Mileage 145.70 Comments  
 (G) Final Shut-In 815  Sampler  Ruined Shale Packer  
 (H) Final Hydrostatic 1840  Straddle  Ruined Packer  
 Shale Packer  Extra Copies  
 Initial Open 30  Extra Packer Sub Total 0  
 Initial Shut-In 60  Extra Recorder Total 1620.70  
 Final Flow 60  Day Standby MP/DST Disc't  
 Final Shut-In 90  Accessibility  
 Sub Total 1620.70

Approved By [Signature] Our Representative STUART STOVER  
 Trilobite Testing Inc. shall not be liable for damaged of any kind of the property or personnel of the one for whom a test is made, or for any loss suffered or sustained, directly or indirectly, through the use of its equipment, or its statements or opinion concerning the results of any test, tools lost or damaged in the hole shall be paid for at cost by the party for whom the test is made.



# TRILOBITE TESTING INC.

1515 Commerce Parkway • Hays, Kansas 67601

## Test Ticket

NO. 53685

Well Name & No. Arpion "A" 1-6 Test No. 7 Date 2-17-2014  
 Company Carmen Schmitt Inc Elevation 2132 KB 2130 GL  
 Address Po Box 47, Great Bend, Ks. 67530-0047  
 Co. Rep / Geo. Dave Goldak Rig Mallard  
 Location: Sec. 6 Twp. 25 Rge. 20W Co. ROOKS State KS

Interval Tested 3732 - 3736 Zone Tested Arbuckle  
 Anchor Length 4' Drill Pipe Run 3486 Mud Wt. 9.3  
 Top Packer Depth 3727 Drill Collars Run 250 Vis 56  
 Bottom Packer Depth 3732 Wt. Pipe Run 0 WL 6.0  
 Total Depth 3736 Chlorides 1300 ppm System LCM 2#  
 Blow Description IFP - BOB IN 1 minute  
FFP - BOB IN 1 minute

Rec	Feet of	%gas	%oil	%water	%mud
<u>1980</u>	<u>Salt wfr</u>		<u>99</u>	<u>1</u>	
Rec	Feet of	%gas	%oil	%water	%mud
Rec	Feet of	%gas	%oil	%water	%mud
Rec	Feet of	%gas	%oil	%water	%mud

Rec Total 1980 BHT 118° Gravity 0.22 @ 76° F Chlorides 65,000 ppm  
 (A) Initial Hydrostatic 1931  Test 1150 T-On Location X115  
 (B) First Initial Flow 153  Jars 250 T-Started 130  
 (C) First Final Flow 627  Safety Joint 75 T-Open 450  
 (D) Initial Shut-In 1192  Circ Sub T-Pulled 635  
 (E) Second Initial Flow 644  Hourly Standby T-Out 945  
 (F) Second Final Flow 868  Mileage 145.70 Comments \_\_\_\_\_  
 (G) Final Shut-In 1193  Sampler \_\_\_\_\_  
 (H) Final Hydrostatic 1878  Straddle \_\_\_\_\_  
 Ruined Shale Packer \_\_\_\_\_  
 Ruined Packer \_\_\_\_\_  
 Extra Packer \_\_\_\_\_  
 Extra Copies \_\_\_\_\_  
 Initial Open 15  Extra Recorder \_\_\_\_\_  
 Initial Shut-In 30  Day Standby \_\_\_\_\_  
 Final Flow 15  Accessibility \_\_\_\_\_  
 Final Shut-In 45  Sub Total 0  
 Sub Total 1620.70 Total 1620.70  
 MP/DST Disc't \_\_\_\_\_

Approved By [Signature] Our Representative Stuart Stover

Trilobite Testing Inc. shall not be liable for damaged of any kind of the property or personnel of the one for whom a test is made, or for any loss suffered or sustained, directly or indirectly, through the use of its equipment, or its statements or opinion concerning the results of any test, tools lost or damaged in the hole shall be paid for at cost by the party for whom the test is made.