



Pioneer Energy Services

Dual Induction Log

15-163-24,174-00-00

API No.

Company **Carmen Schmitt, Inc.**

Well **Arpin "A" #1-6**

Field

County **Rooks** State **Kansas**

Location

**SE NE NE SW
2,293' FSL & 2,555' FWL**

Sec: **6** Twp: **9S** Rge: **20W**

Other Services
CNL/CDL
MEL/BHCS

Elevation

K.B. 2132
D.F. 2127
G.L. 2127

Permanent Datum Ground Level
Log Measured From Kelly Bushing 5 Ft. Above Perm. Datum
Drilling Measured From Kelly Bushing

Date	2/17/2014	
Run Number	One	
Depth Driller	3830	
Depth Logger	3830	
Bottom Logged Interval	3829	
Top Log Interval	200	
Casing Driller	8.625 @ 208	
Casing Logger	208	
Bit Size	7.875	
Type Fluid in Hole	Chemical	
Salinity, ppm CL	1300	
Density / Viscosity	9.3 58	
pH / Fluid Loss	10.5 6.0	
Source of Sample	Flowline	
Rm @ Meas. Temp	.80 @ 66	
Rmf @ Meas. Temp	.60 @ 66	
Rmc @ Meas. Temp	1.08 @ 66	
Source of Rmf / Rmc	Charts	
Rm @ BHT	.46 @ 114	
Operating Rig Time	4 Hours	
Max Rec. Temp. F	114	
Equipment Number	108	
Location	Hays	
Recorded By	J. Long	
Witnessed By	Dave Goldak	

<<< Fold Here >>>

All interpretations are opinions based on inferences from electrical or other measurements and we cannot and do not guarantee the accuracy or correctness of any interpretation, and we shall not, except in the case of gross or willful negligence on our part, be liable or responsible for any loss, costs, damages, or expenses incurred or sustained by anyone resulting from any interpretation made by any of our officers, agents or employees. These interpretations are also subject to our general terms and conditions set out in our current Price Schedule.

Comments

Thank you for using Pioneer Energy Services
www.pioneerenergy.com
 785 625 3858

Damar, 1 South on 18 Highway to S Road, 1 1/2 West, 1/2 South, East Into

Database File: c:\warrior\data\carmen schmitt_arpin a #1-6\carmenschmidt_arpin_a_1-6hd.db
 Dataset Pathname: dil/carmstck
 Presentation Format: dil2in
 Dataset Creation: Mon Feb 17 21:24:49 2014
 Charted by: Depth in Feet scaled 1:600

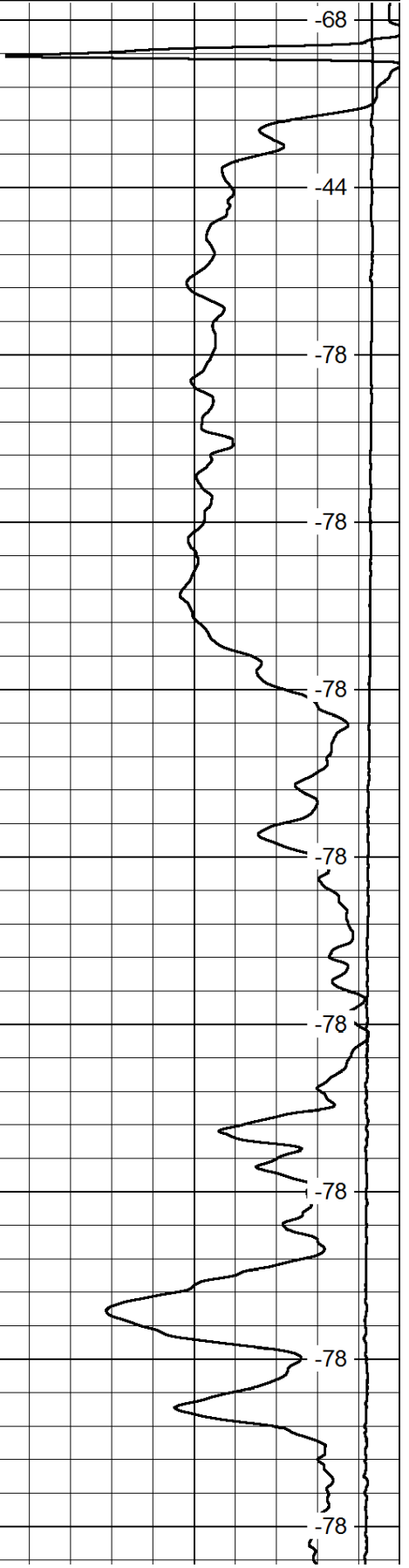
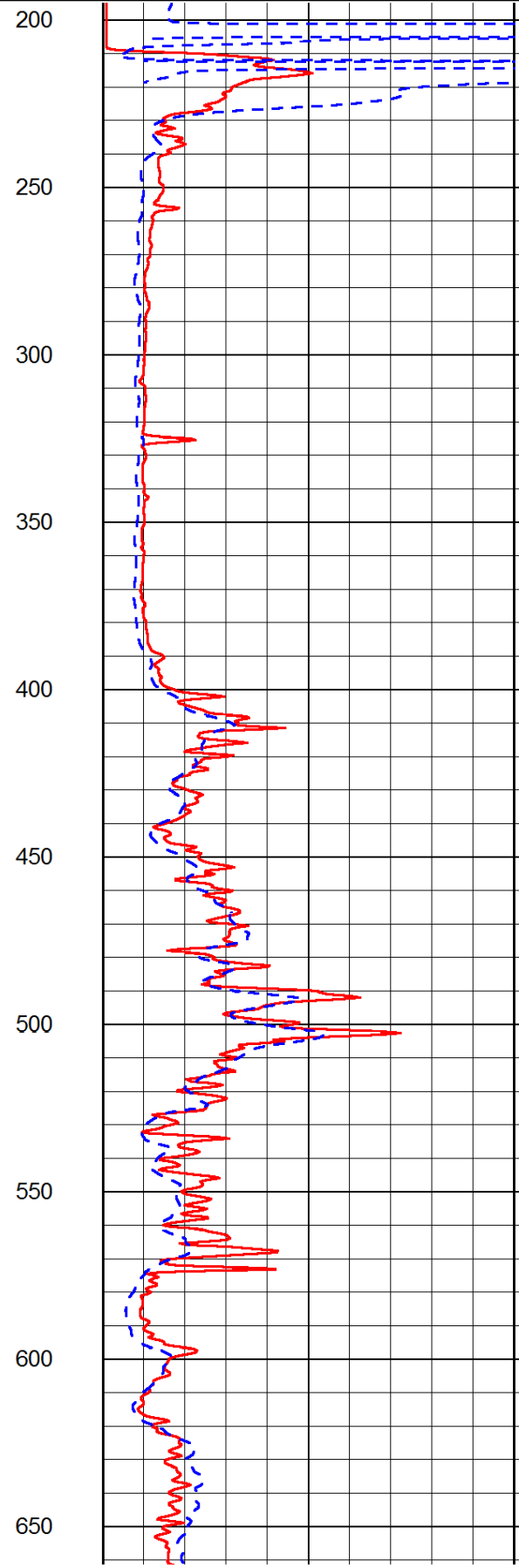
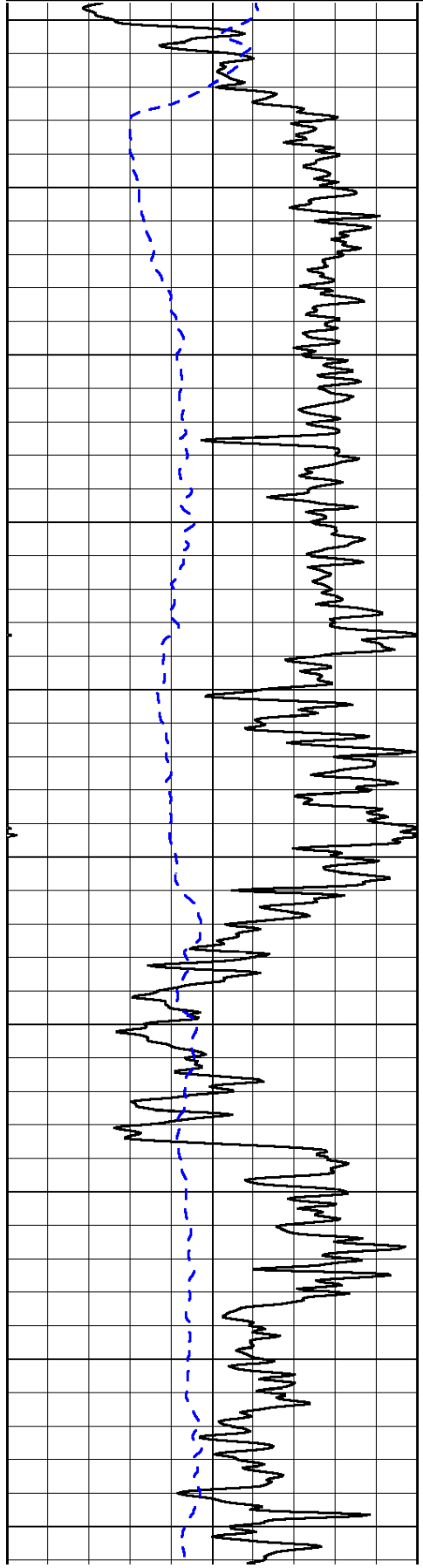
0	Gamma Ray	150
-200	SP (mV)	0

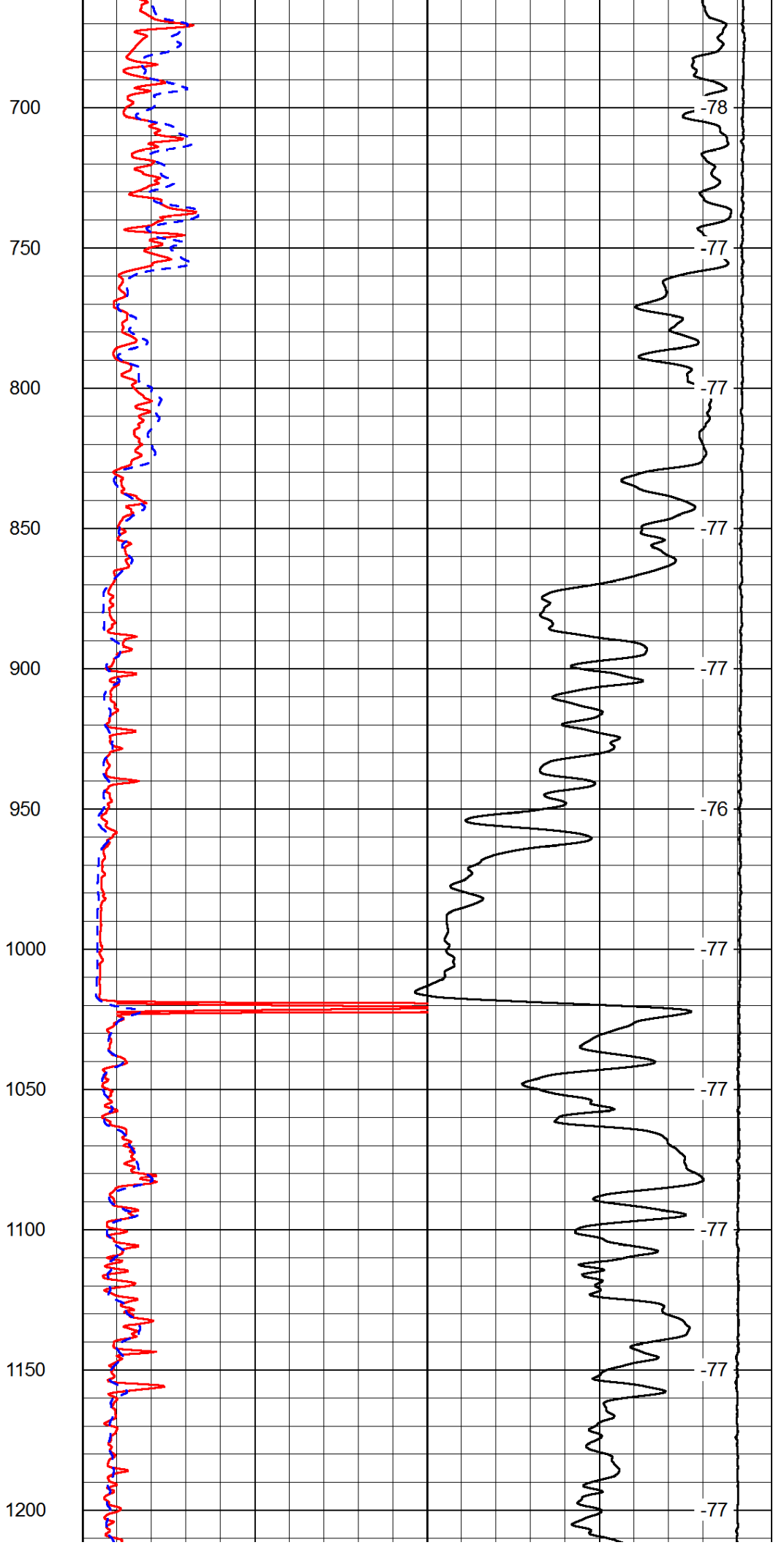
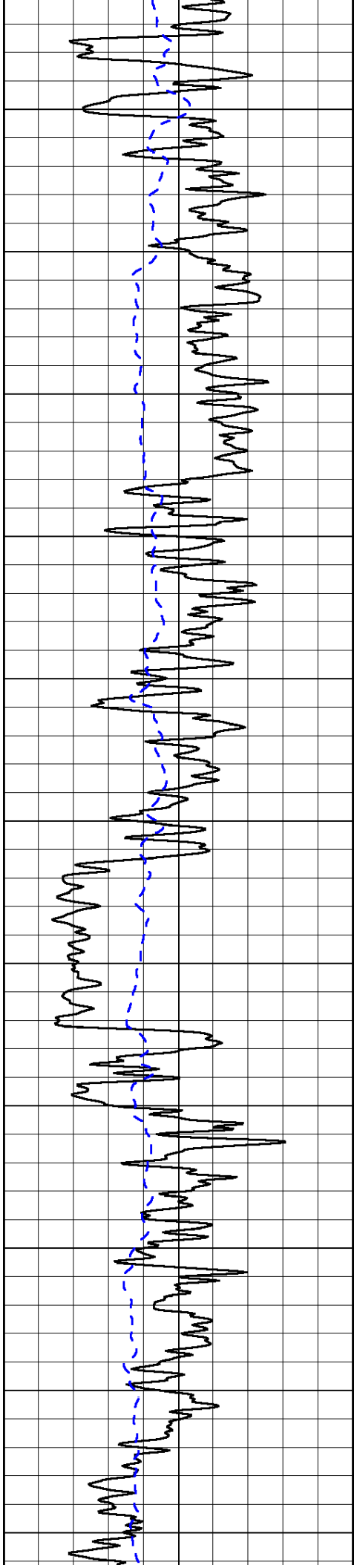
0	Shallow Resistivity	50
0	Deep Resistivity	50

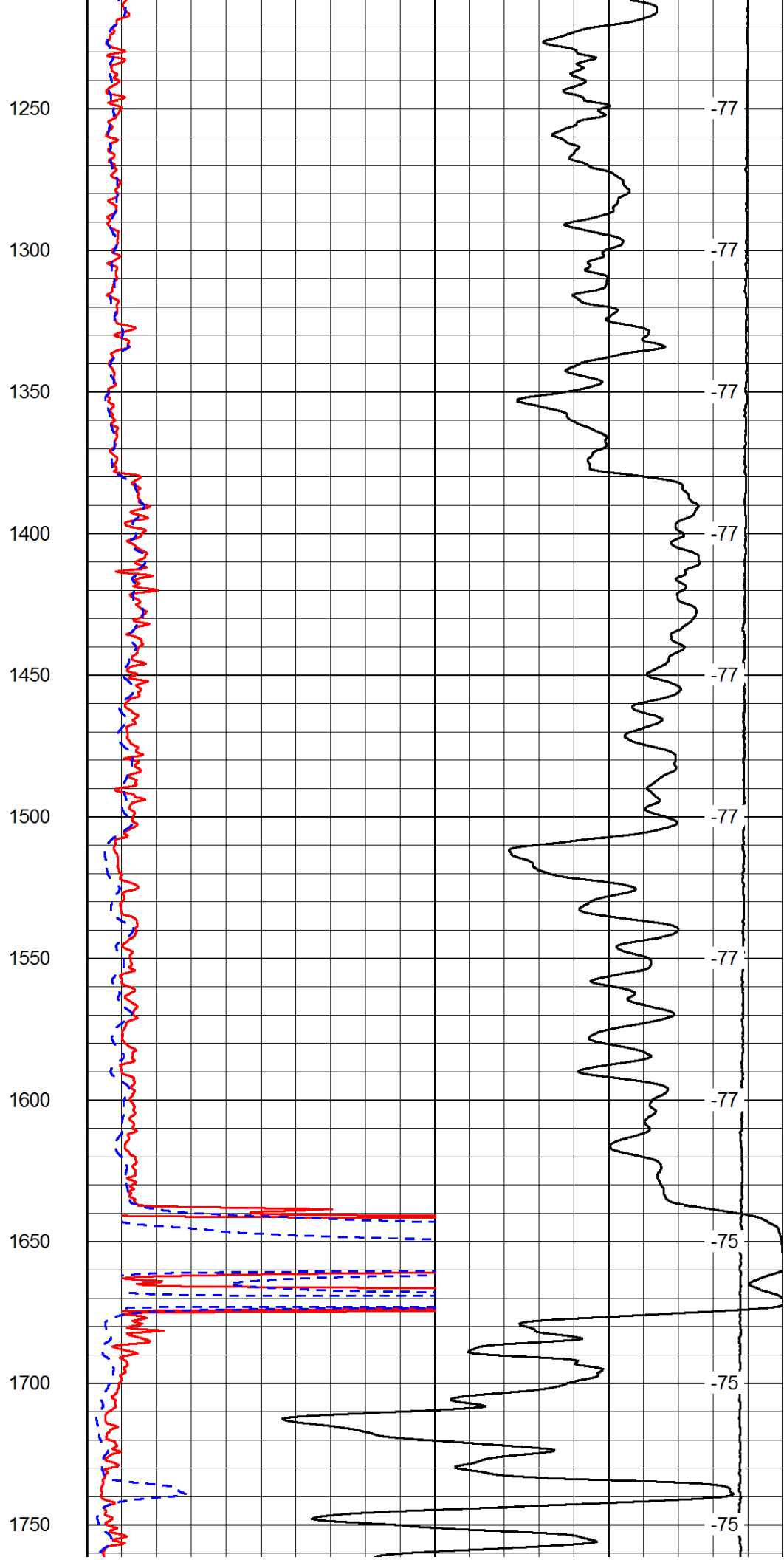
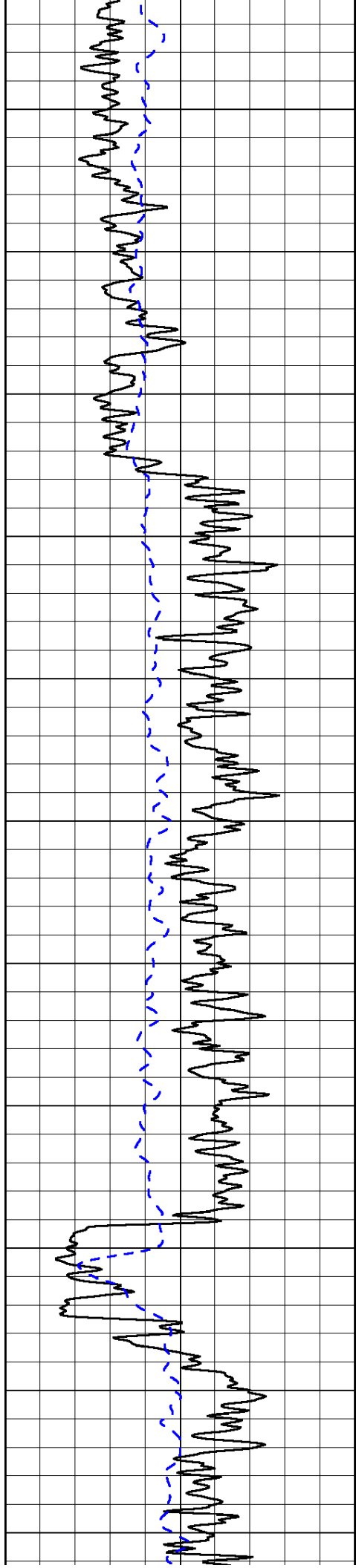
LSPD

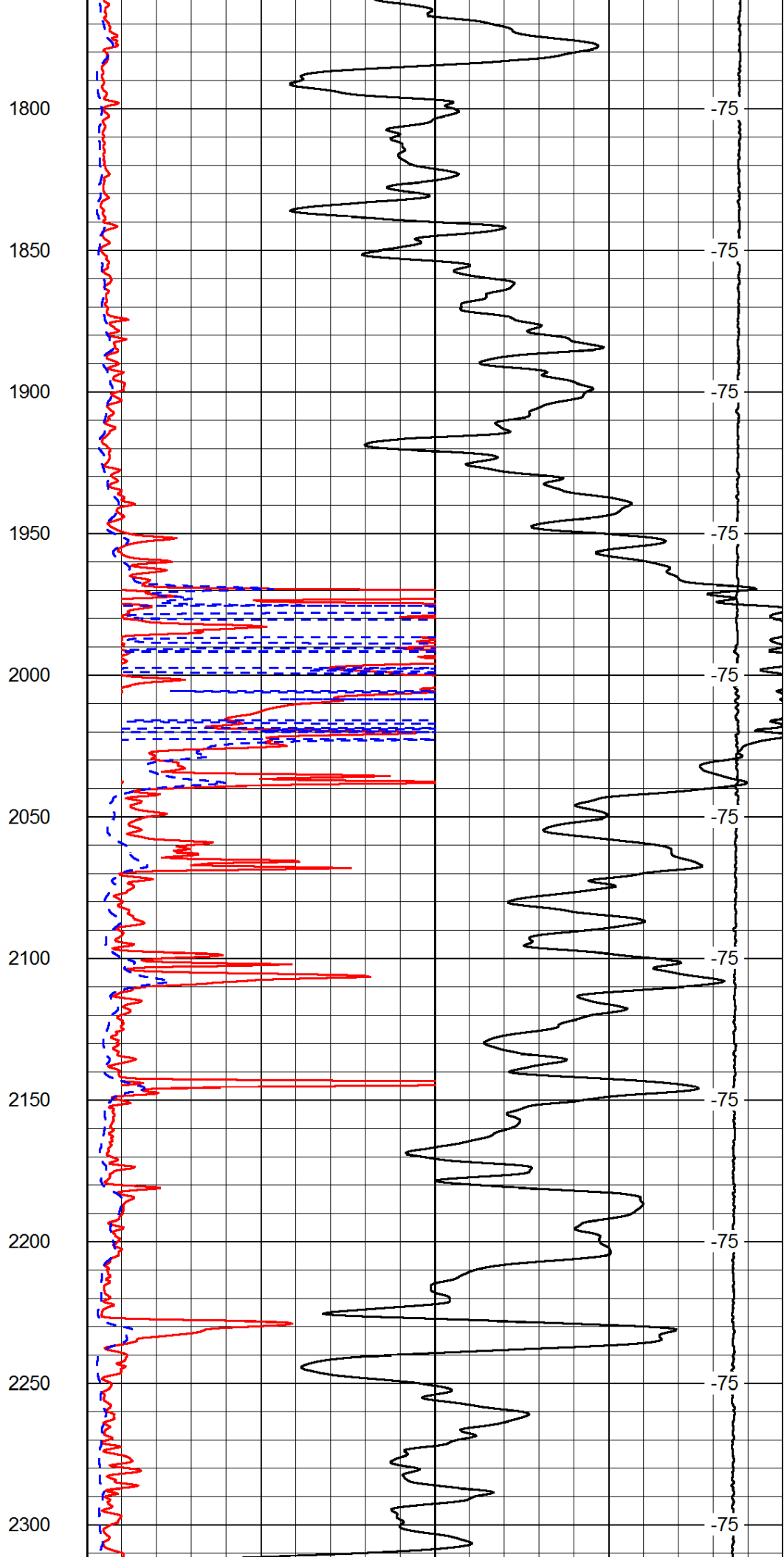
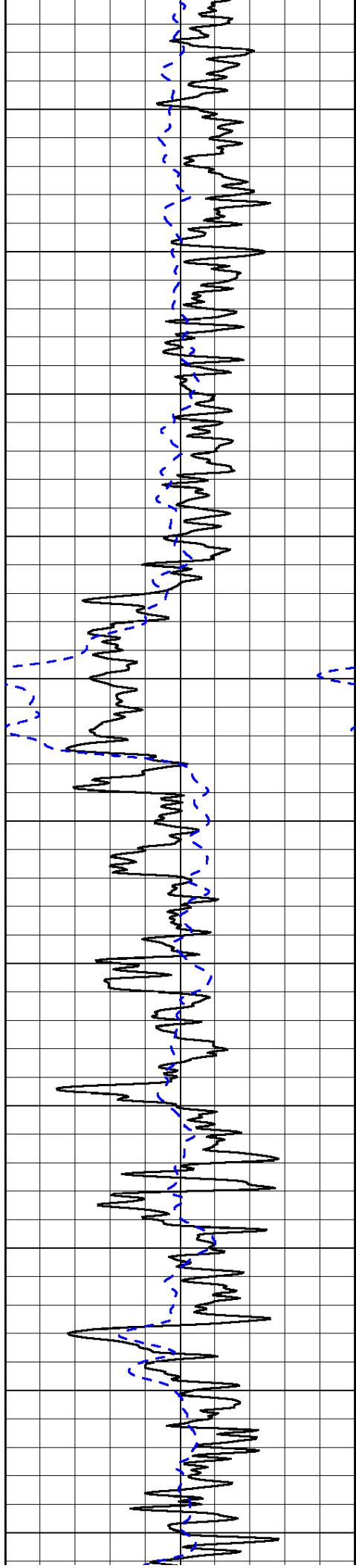
1000	Conductivity	0
15000	Line Tension	0

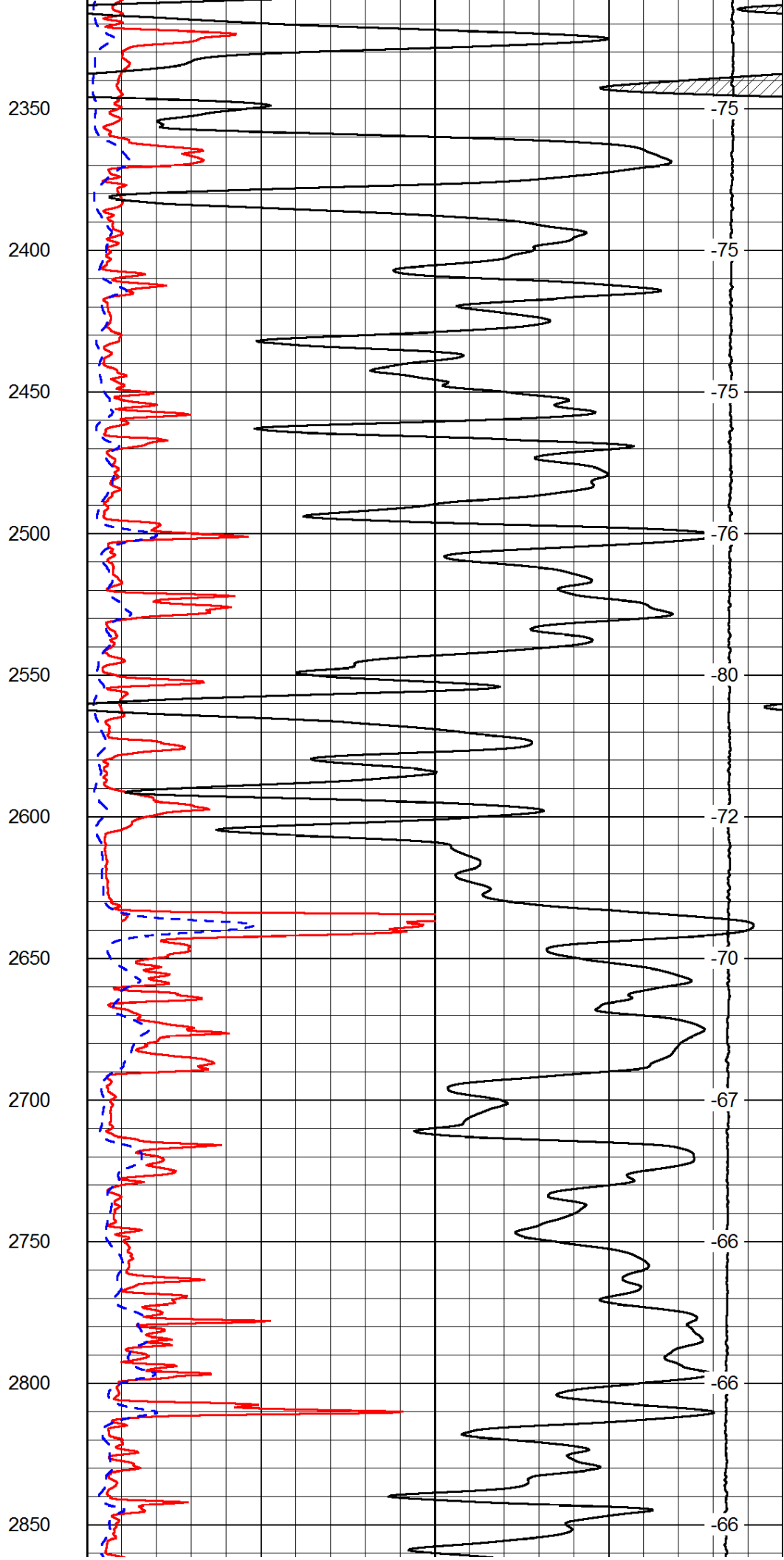
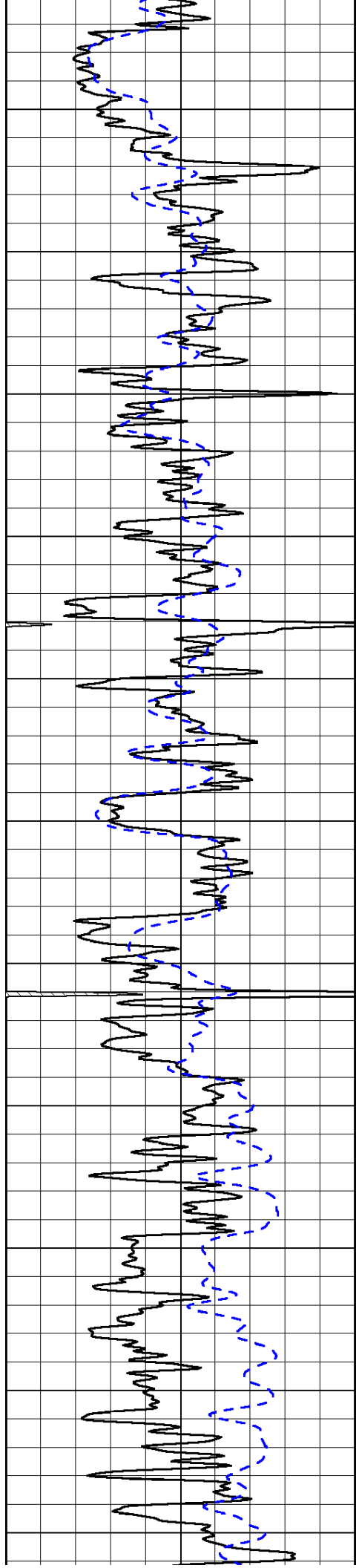
50	Shallow Resistivity	500
50	Deep Resistivity	500

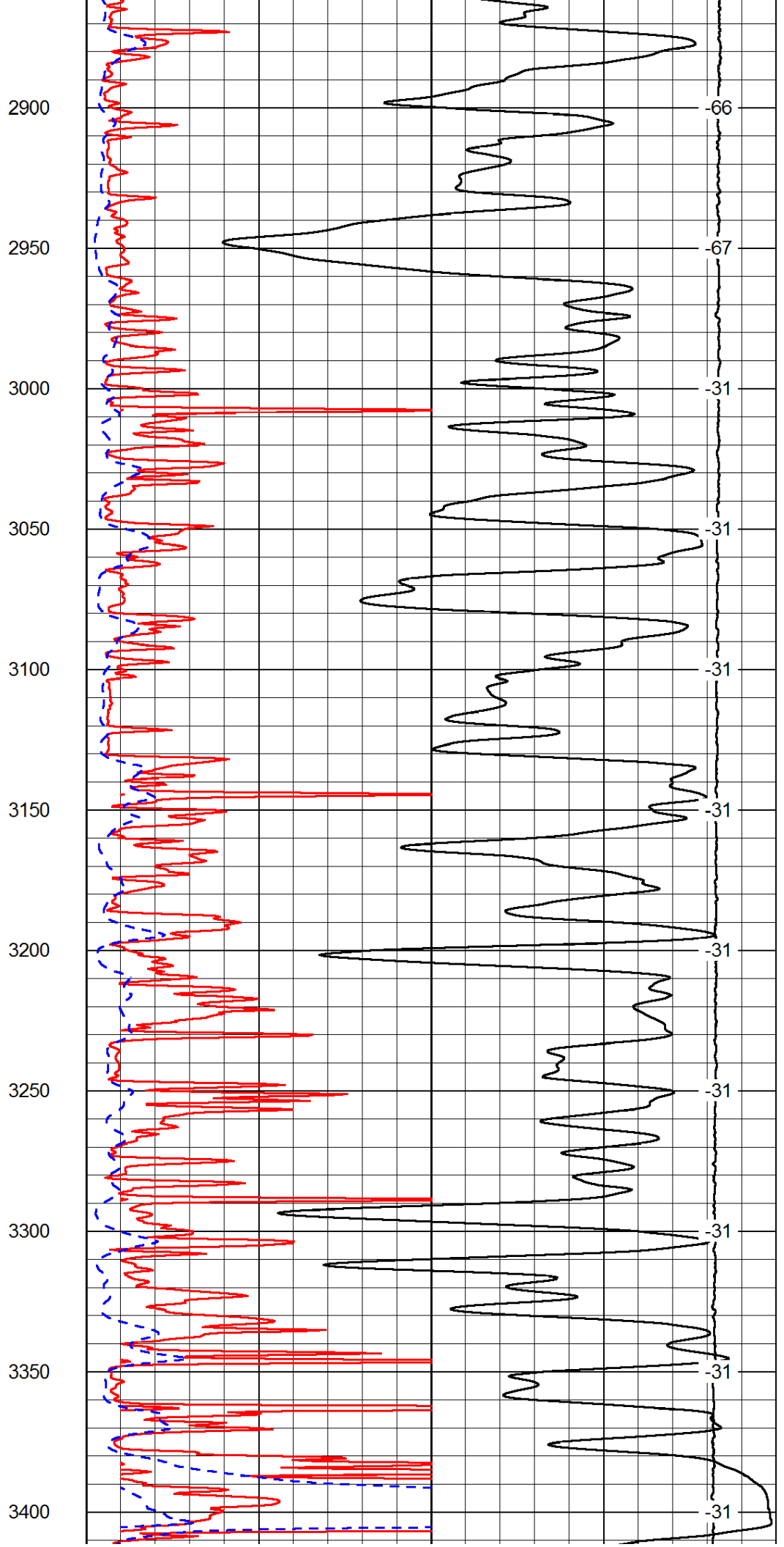
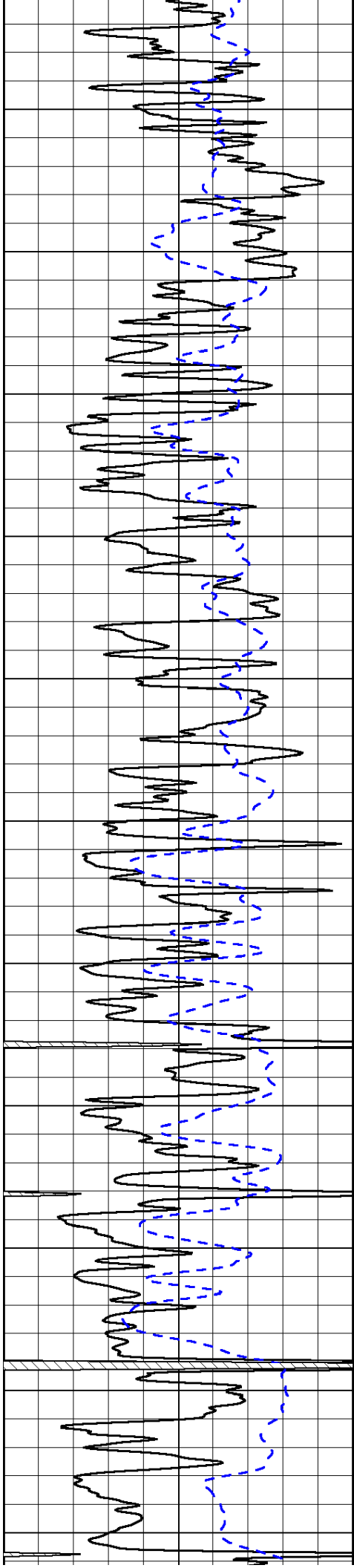


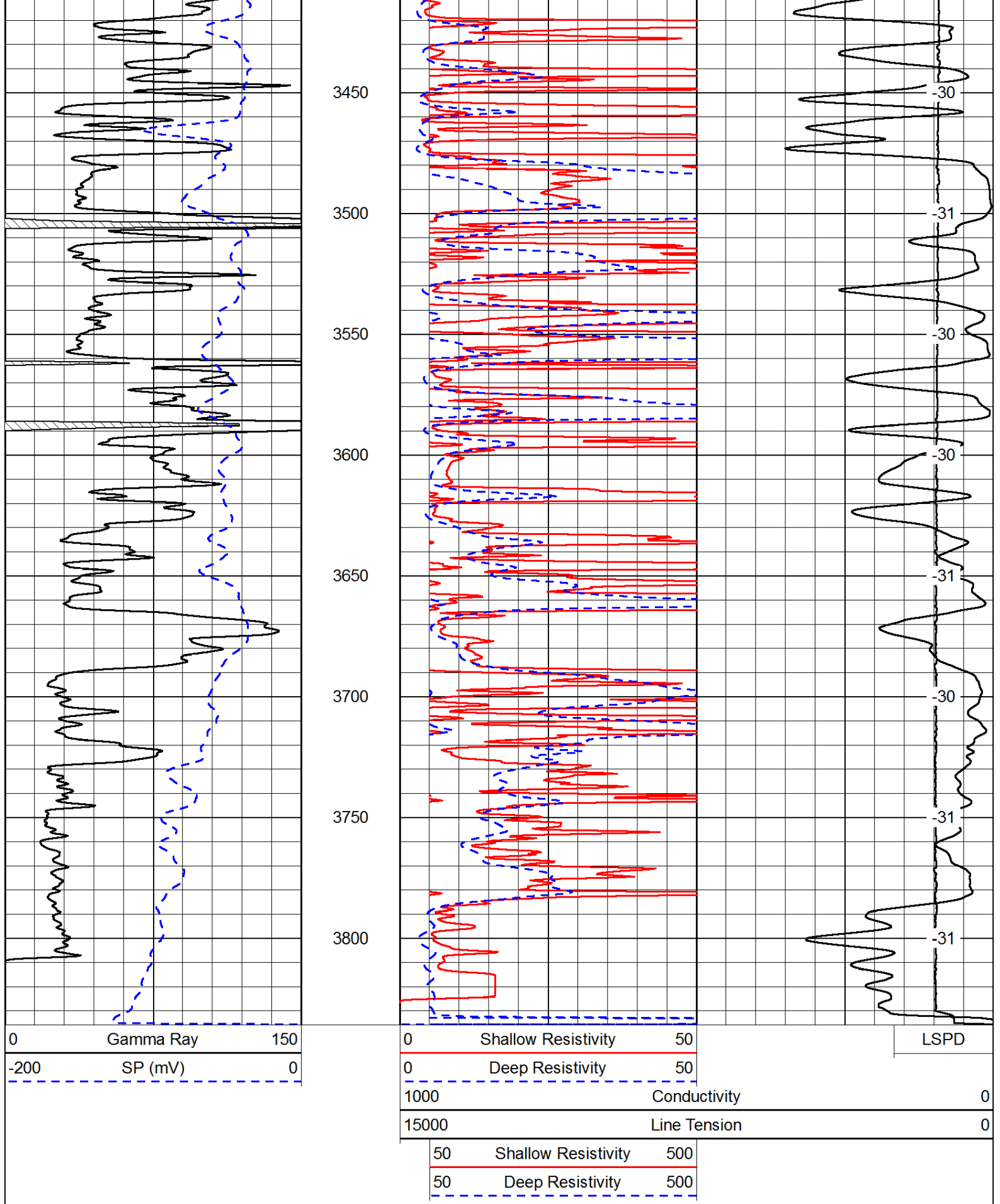












Database File: c:\warrior\data\carmen schmitt_arpin a #1-6\carmenschmidt_arpin_a_1-6hd.db
 Dataset Pathname: dil/carmstck
 Presentation Format: dil
 Dataset Creation: Mon Feb 17 21:24:49 2014

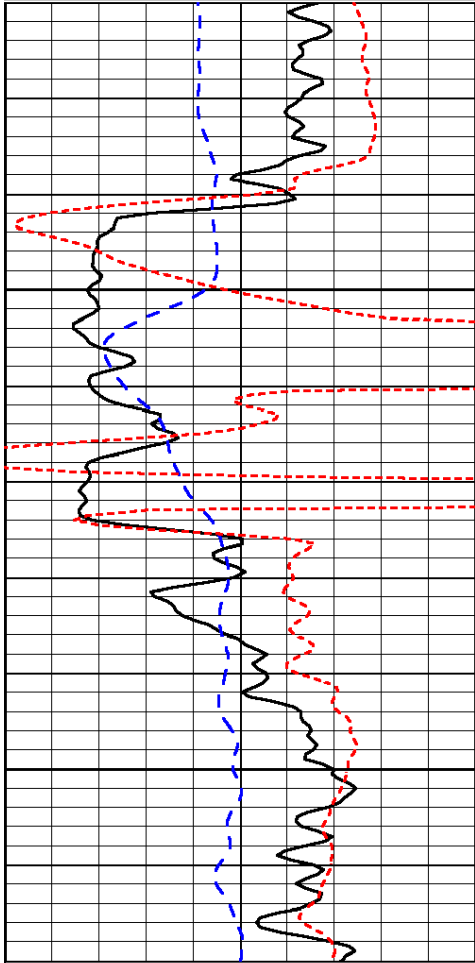
Charted by:

Depth in Feet scaled 1:240

0	Gamma Ray	150
-200	SP (mV)	0
-160	RxoRt	40

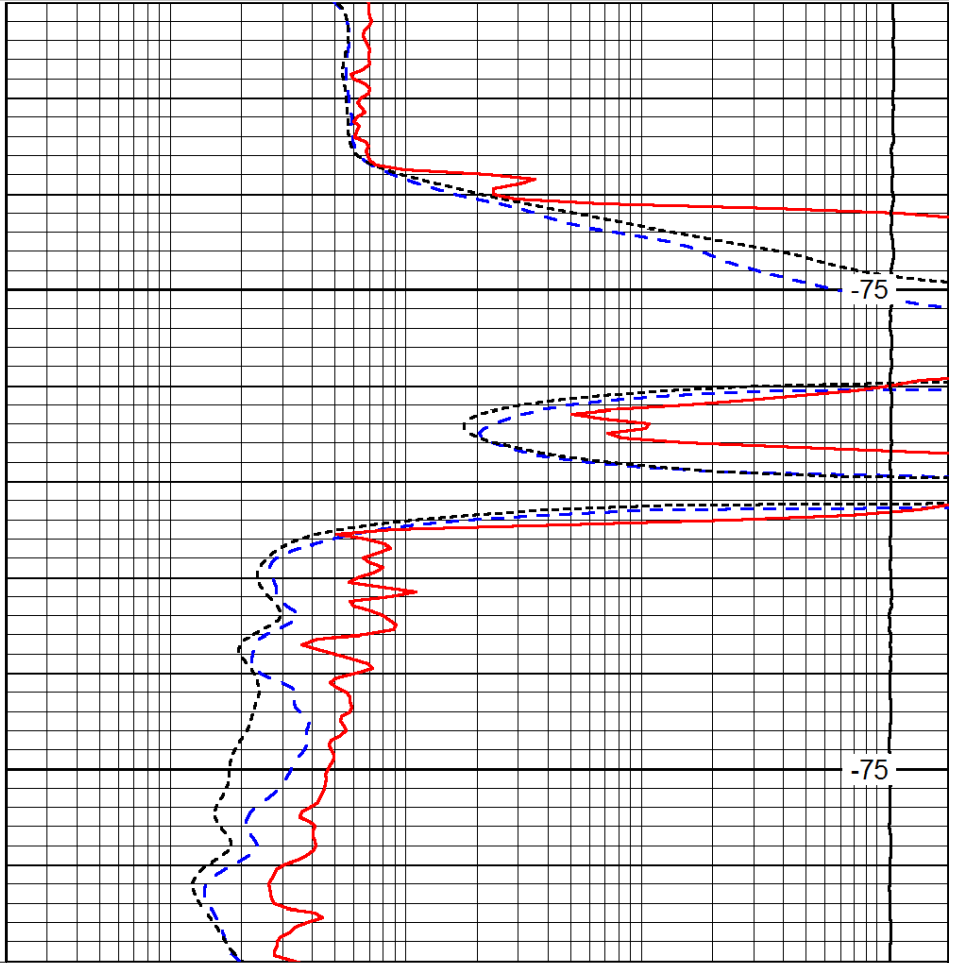
0.2	Deep Resistivity	2000
0.2	Medium Resistivity	2000
0.2	Shallow Resistivity	2000
15000	Line Tension	0

LSPD



1650

1700



-75

-75

0	Gamma Ray	150
-200	SP (mV)	0
-160	RxoRt	40

0.2	Deep Resistivity	2000
0.2	Medium Resistivity	2000
0.2	Shallow Resistivity	2000
15000	Line Tension	0

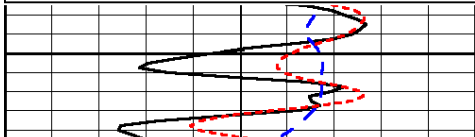
LSPD

Database File: c:\warrior\data\carmen schmitt_arpin a #1-6\carmenschmidt_arpin_a_1-6hd.db
 Dataset Pathname: dil/carmstck
 Presentation Format: dil
 Dataset Creation: Mon Feb 17 21:24:49 2014
 Charted by: Depth in Feet scaled 1:240

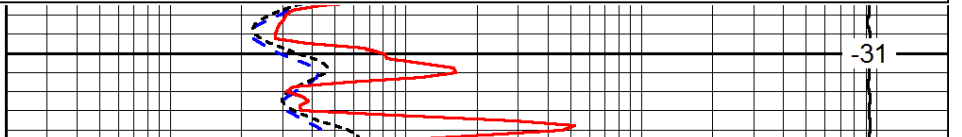
0	Gamma Ray	150
-200	SP (mV)	0
-160	RxoRt	40

0.2	Deep Resistivity	2000
0.2	Medium Resistivity	2000
0.2	Shallow Resistivity	2000
15000	Line Tension	0

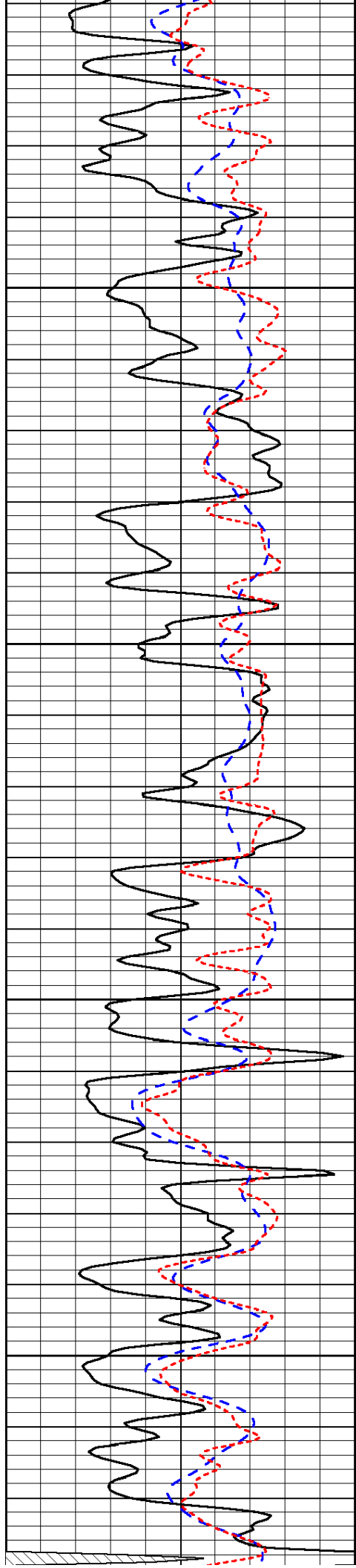
LSPD



3000



-31

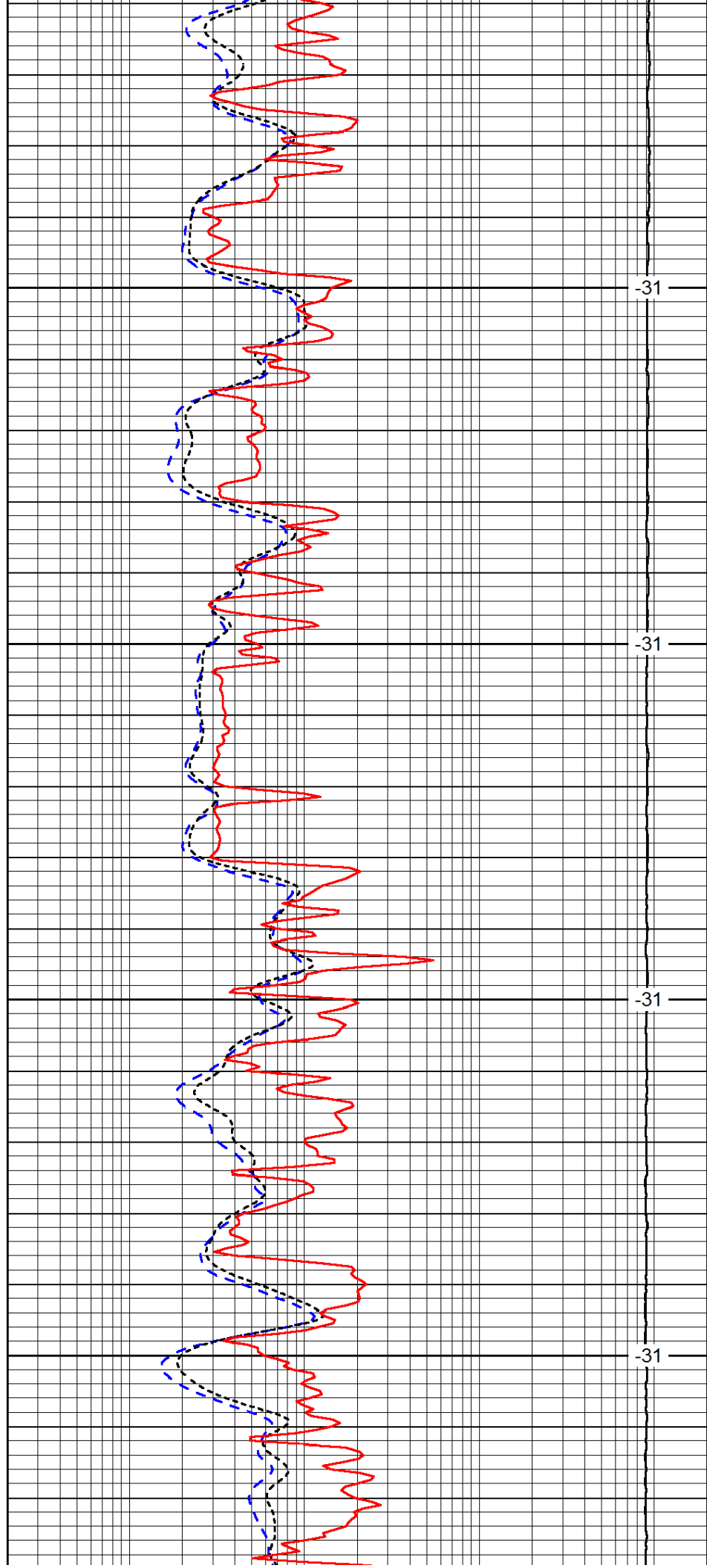


3050

3100

3150

3200

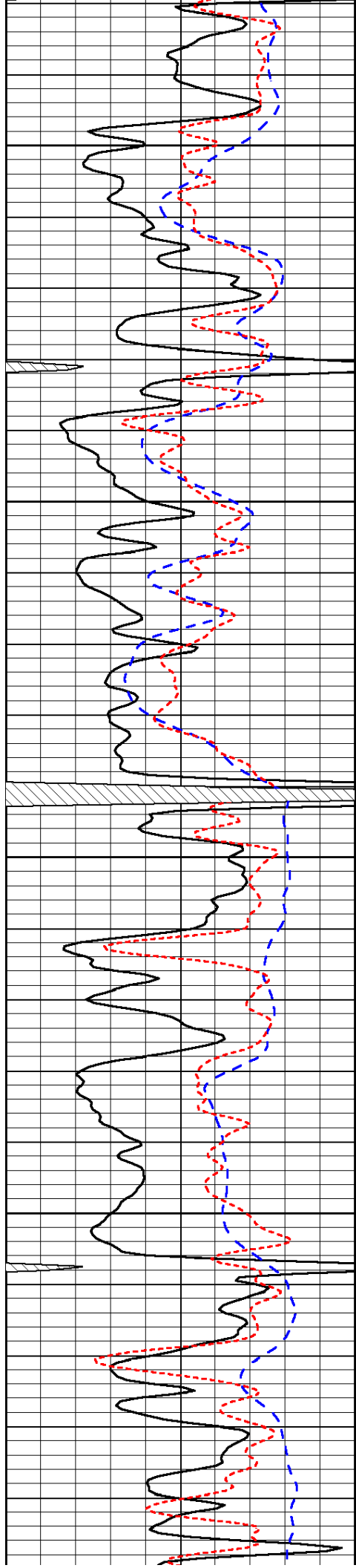


-31

-31

-31

-31



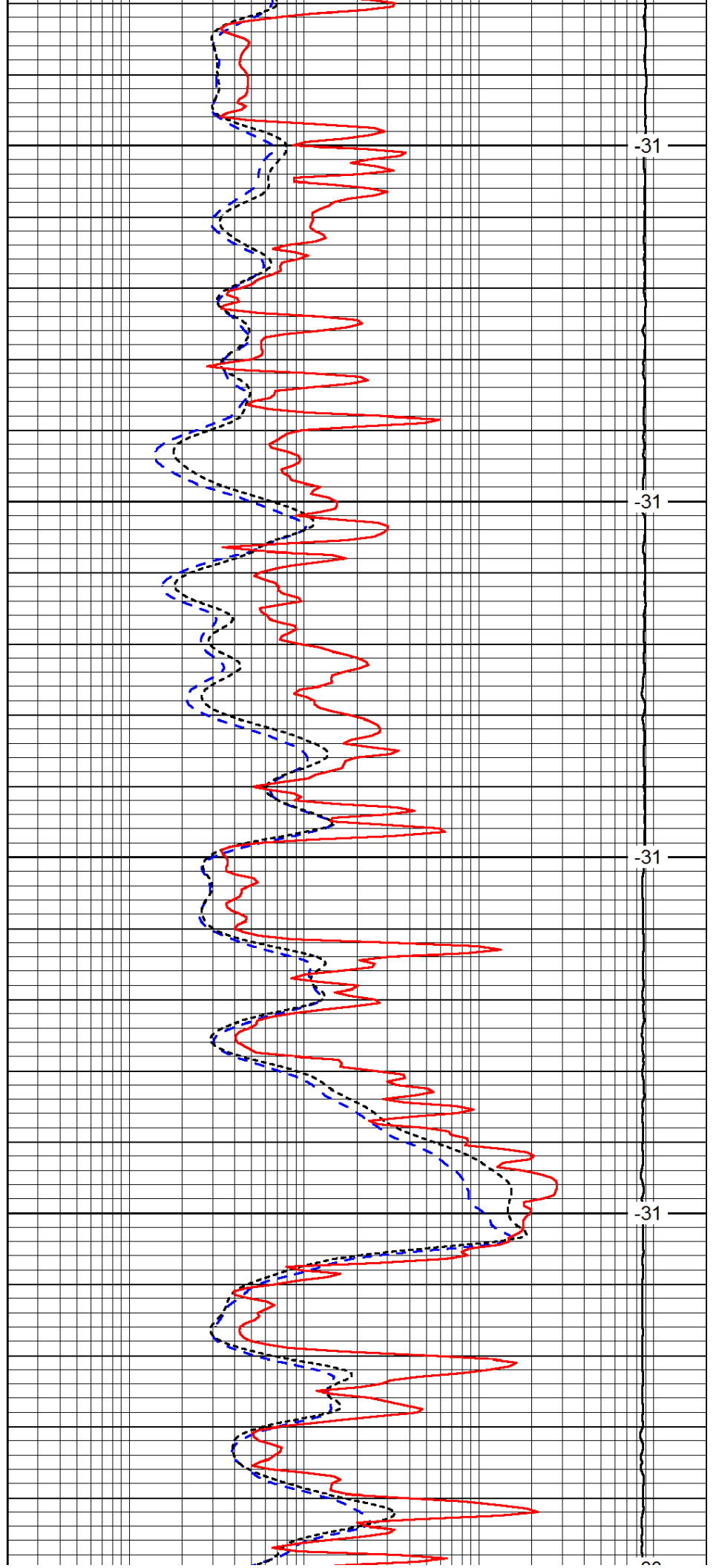
3250

3300

3350

3400

3450



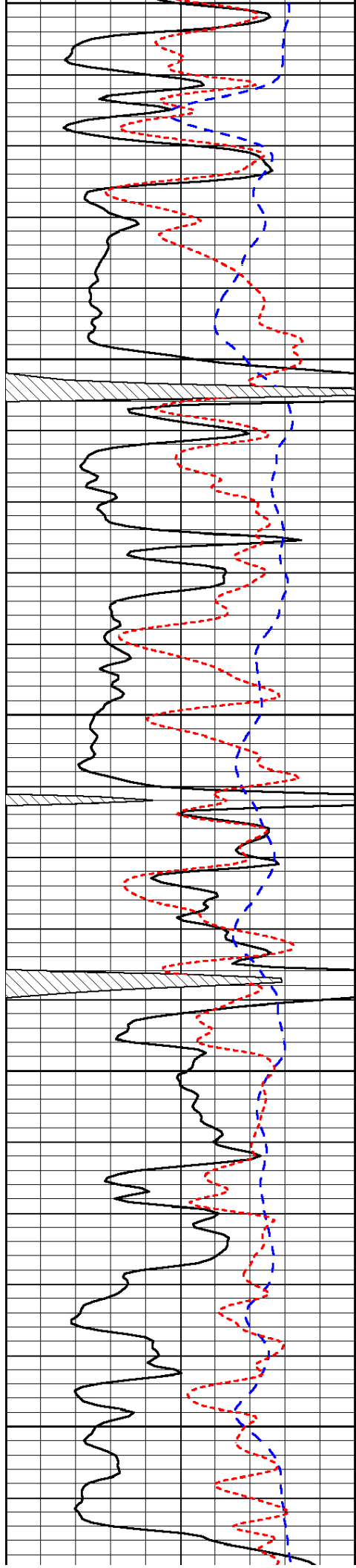
-31

-31

-31

-31

-31



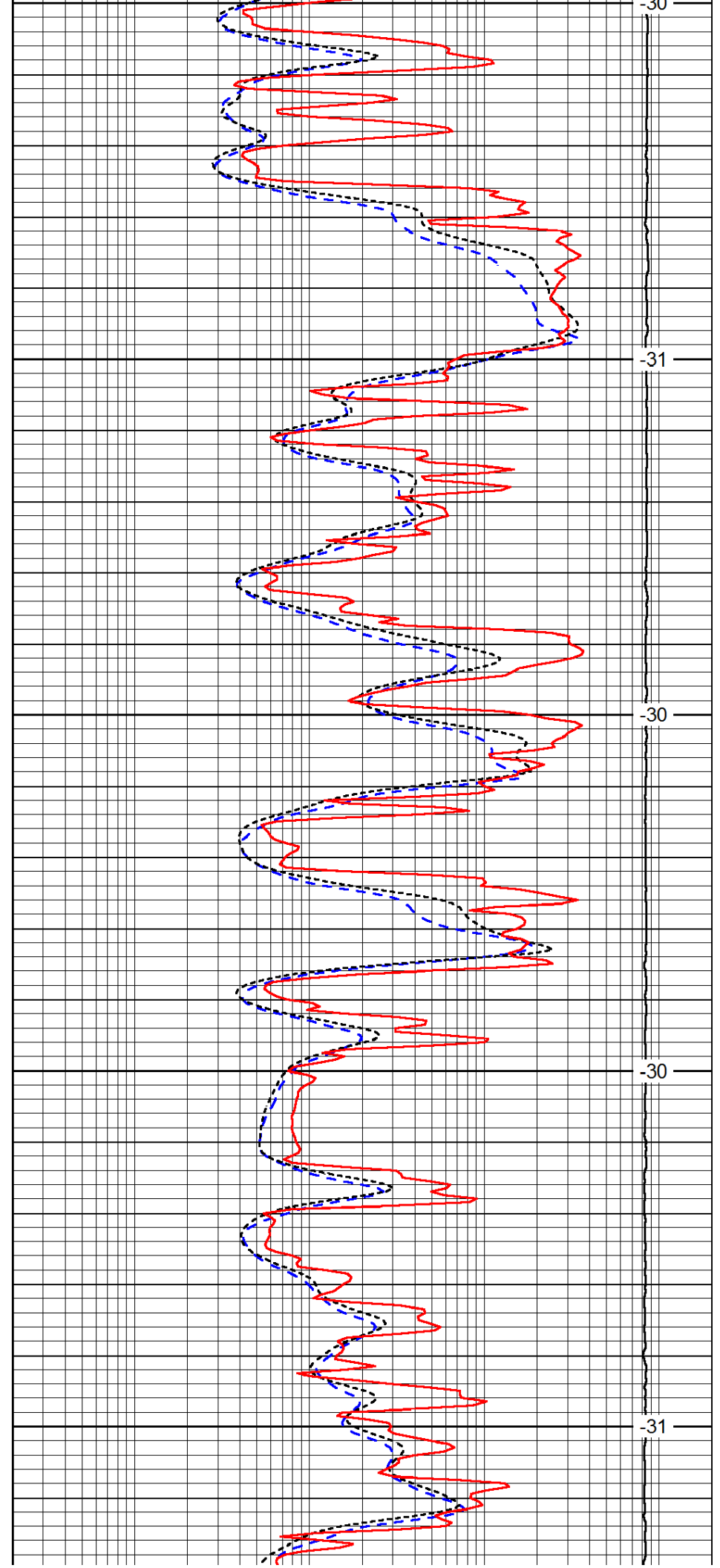
3450

3500

3550

3600

3650



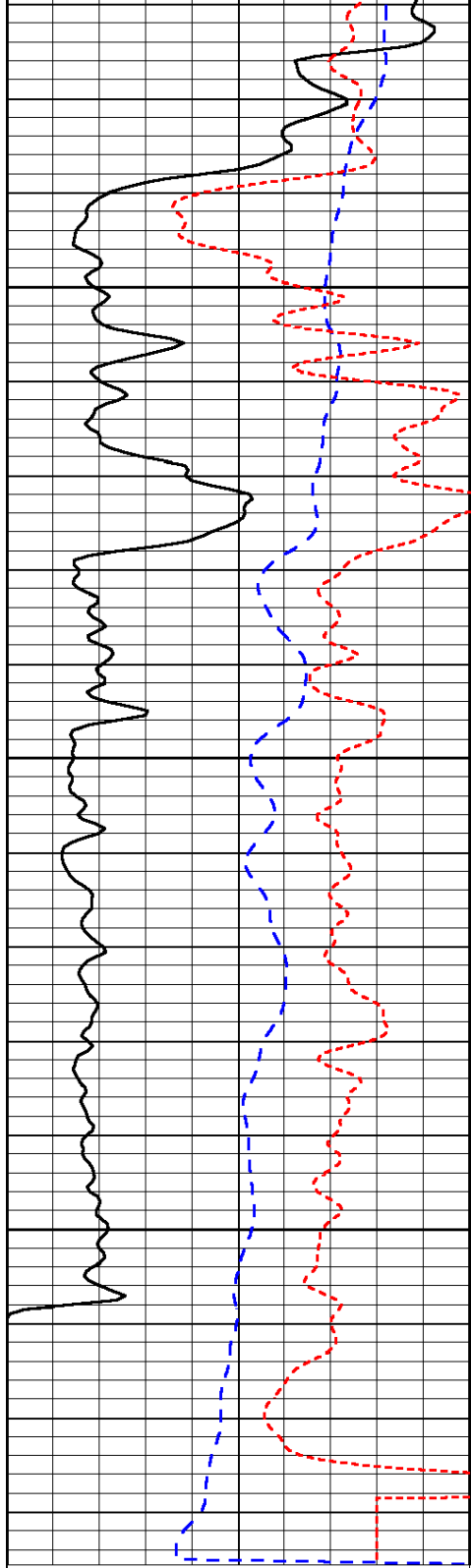
-30

-31

-30

-30

-31

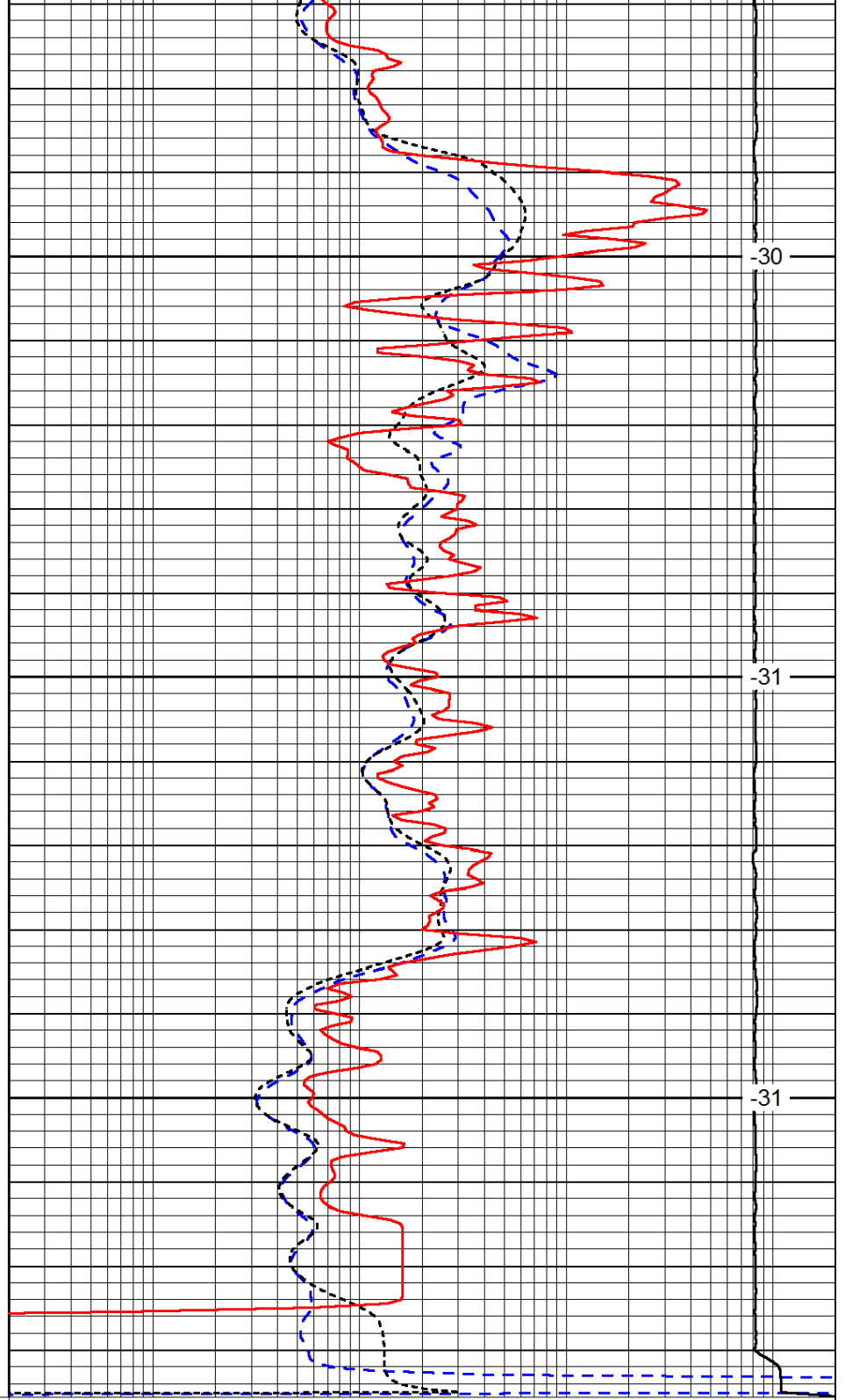


0	Gamma Ray	150
-200	SP (mV)	0
-160	RxoRt	40

3700

3750

3800



-30

-31

-31

0.2	Deep Resistivity	2000
0.2	Medium Resistivity	2000
0.2	Shallow Resistivity	2000
15000	Line Tension	0

LSPD