



Pioneer Energy Services

Microresistivity Log

15-163-24,174-00-00

API No.

Company **Carmen Schmitt, Inc.**

Well **Arpin "A" #1-6**

Field

County

Rooks

State

Kansas

Location

**SE NE NE SW
2,293' FSL & 2,555' FWL**

Sec: **6**

Twp: **9S**

Rge: **20W**

Other Services
CNL/CDL
DIL/BHCS

Elevation

K.B. 2132
D.F. 2127
G.L. 2127

Permanent Datum Ground Level
Log Measured From Kelly Bushing
Drilling Measured From Kelly Bushing

Elevation 2127
5 Ft. Above Perm. Datum

Date **2/17/2014**

Run Number **Two**

Depth Driller **3830**

Depth Logger **3830**

Bottom Logged Interval **3829**

Top Log Interval **3000**

Casing Driller **8.625 @ 208**

Casing Logger **208**

Bit Size **7.875**

Type Fluid in Hole **Chemical**

Salinity, ppm CL **1300**

Density / Viscosity **9.3 58**

pH / Fluid Loss **10.5 6.0**

Source of Sample **Flowline**

Rm @ Meas. Temp **.80 @ 66**

Rmf @ Meas. Temp **.60 @ 66**

Rmc @ Meas. Temp **1.08 @ 66**

Source of Rmf / Rmc **Charts**

Rm @ BHT **.46 @ 114**

Operating Rig Time **4 Hours**

Max Rec. Temp. F **114**

Equipment Number **108**

Location **Hays**

Recorded By **J. Long**

Witnessed By **Dave Goldak**

<<< Fold Here >>>

All interpretations are opinions based on inferences from electrical or other measurements and we cannot and do not guarantee the accuracy or correctness of any interpretation, and we shall not, except in the case of gross or willful negligence on our part, be liable or responsible for any loss, costs, damages, or expenses incurred or sustained by anyone resulting from any interpretation made by any of our officers, agents or employees. These interpretations are also subject to our general terms and conditions set out in our current Price Schedule.

Comments

Thank you for using Pioneer Energy Services
www.pioneerenergy.com
785 625 3858

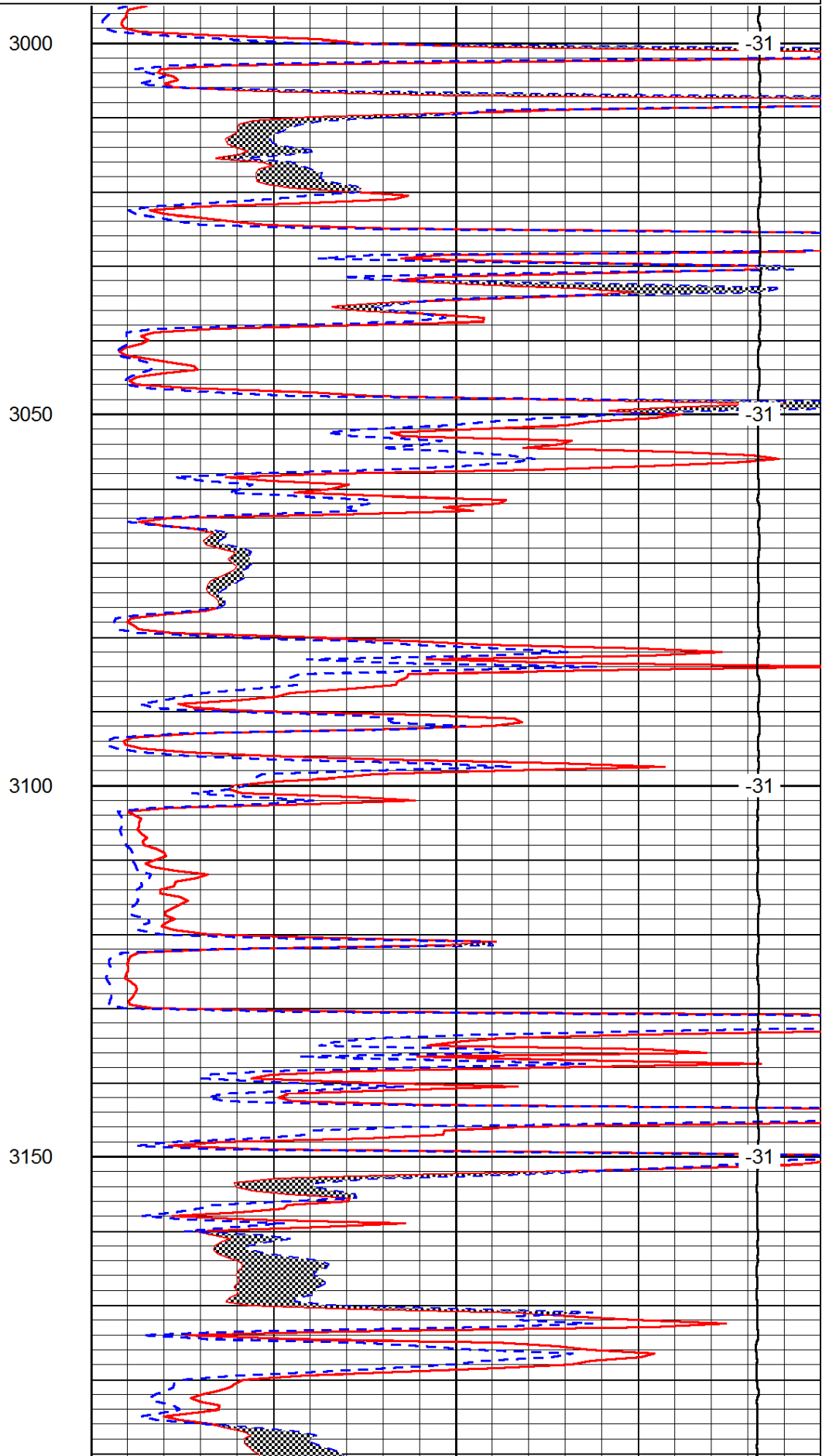
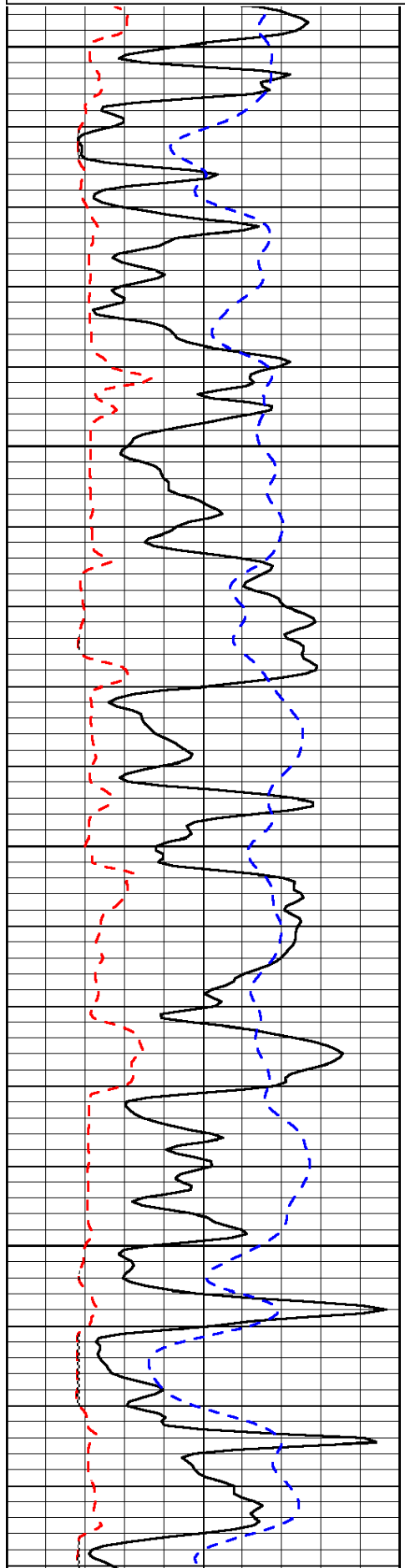
Damar, 1 South on 18 Highway to S Road, 1 1/2 West, 1/2 South, East Into

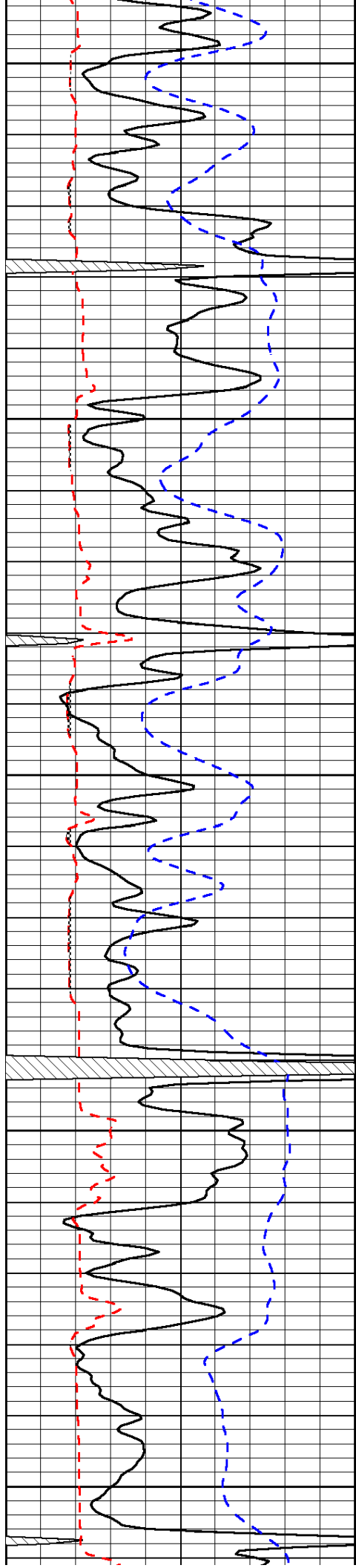
Database File: c:\warrior\data\carmen schmitt_arpin a #1-6\carmenschmidt_arpin_a_1-6hd.db
 Dataset Pathname: dil/carmstck
 Presentation Format: micro
 Dataset Creation: Mon Feb 17 21:24:49 2014
 Charted by: Depth in Feet scaled 1:240

0	Gamma Ray	150
6	Micro Log Caliper (GAPI)	16
-200	SP (mV)	0

0	Micro Inverse 1 X 1	40
0	Micro Normal 2"	40
15000	Line Weight	0

LSPD





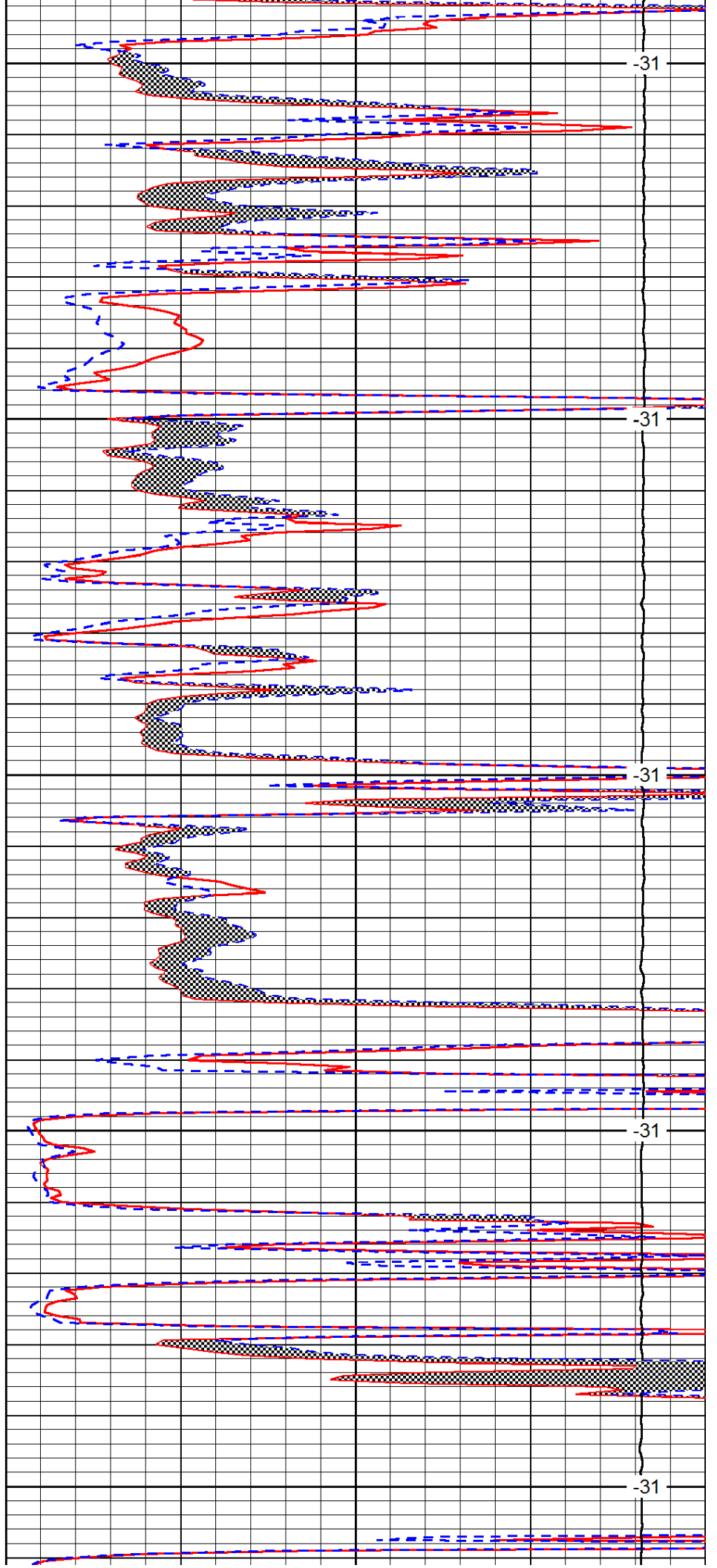
3200

3250

3300

3350

3400



-31

-31

-31

-31

-31

