



Pioneer Energy Services

Borehole Compensated Sonic Log

15-163-24,174-00-00

API No.

Company **Carmen Schmitt, Inc.**

Well **Arpin "A" #1-6**

Field

County **Rooks**

State **Kansas**

Location

**SE NE NE SW
2,293' FSL & 2,555' FWL**

Sec: **6**

Twp: **9S**

Rge: **20W**

Other Services
CNL/CDL
MEL/DIL

Date

2/17/2014

Elevation
K.B. 2132
D.F.
G.L. 2127

Permanent Datum

Ground Level
Kelly Bushing

5 Ft. Above Perm. Datum

Log Measured From

Kelly Bushing

Drilling Measured From

Kelly Bushing

Run Number

Two

Type Log

BHC Sonic

Depth Driller

3830

Depth Logger

3830

Bottom Logged Interval

3819

Top Logged Interval

200

Type Fluid In Hole

Chemical

Salinity, PPM CL

1300

Density

9.3

Level

Full

Max. Rec. Temp. F

114

Operating Rig Time

4 Hours

Equipment -- Location

108 Hays

Recorded By

J. Long

Witnessed By

Dave Goldak

Borehole Record

Casing Record

Run No.	Bit	From	To	Size	Wgt.	From	To
1	12.25	00	208	8.625	24#	00	208
2	7.875	208	3830				

<<< Fold Here >>>

All interpretations are opinions based on inferences from electrical or other measurements and we cannot and do not guarantee the accuracy or correctness of any interpretation, and we shall not, except in the case of gross or willful negligence on our part, be liable or responsible for any loss, costs, damages, or expenses incurred or sustained by anyone resulting from any interpretation made by any of our officers, agents or employees. These interpretations are also subject to our general terms and conditions set out in our current Price Schedule.

Comments

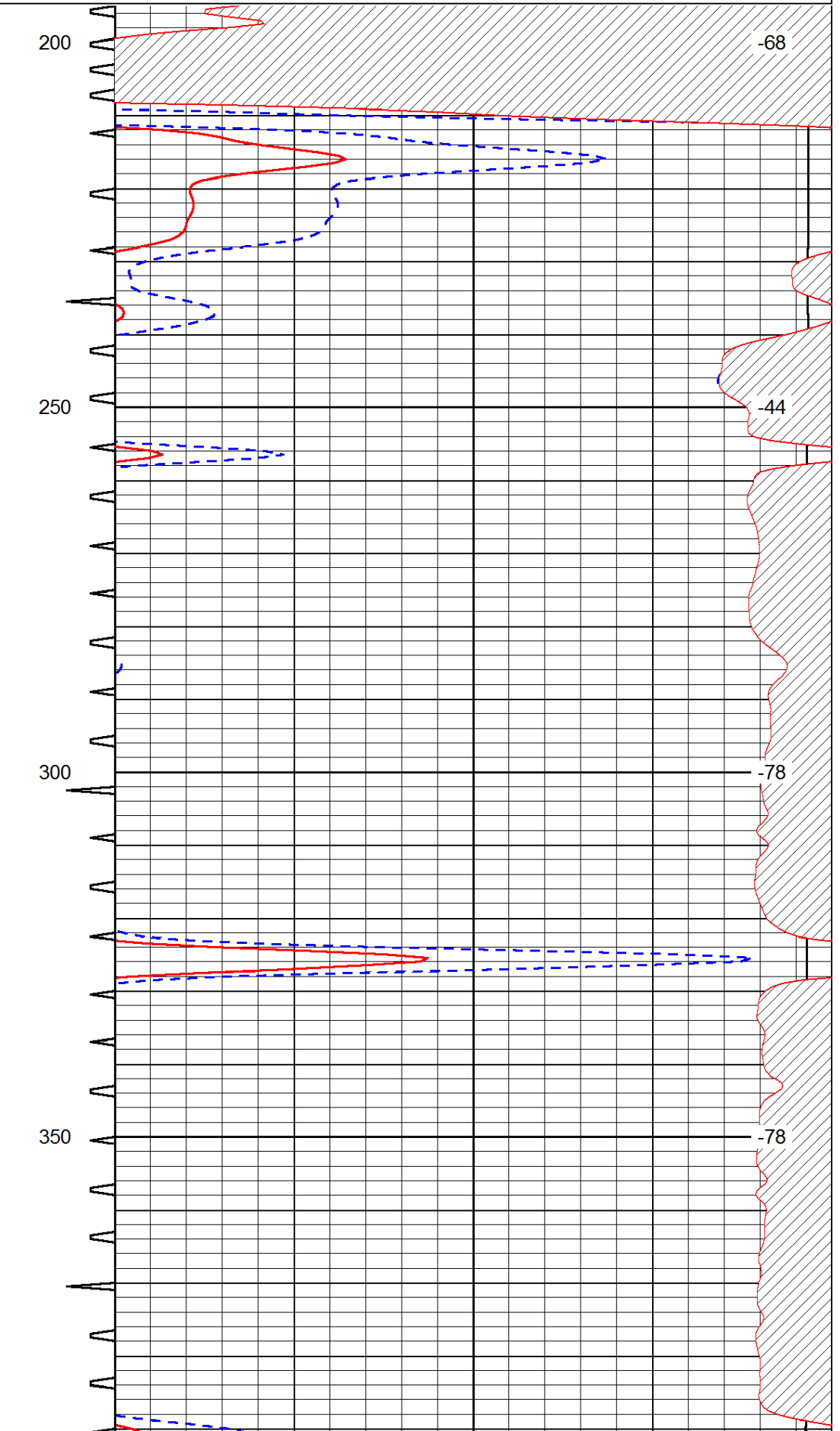
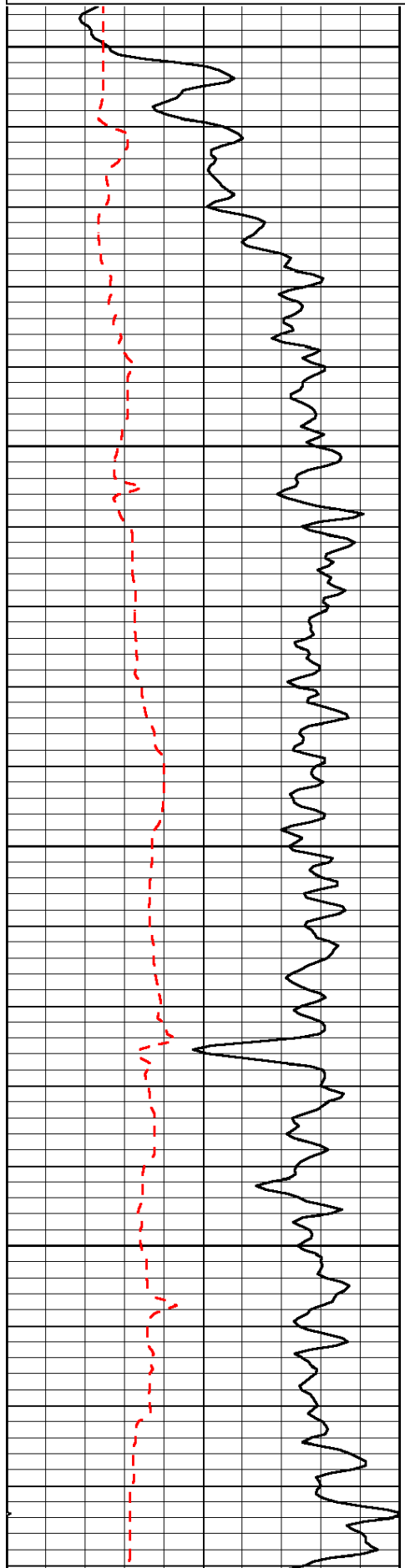
Thank you for using Pioneer Energy Services
www.pioneerenergy.com
 785 625 3858

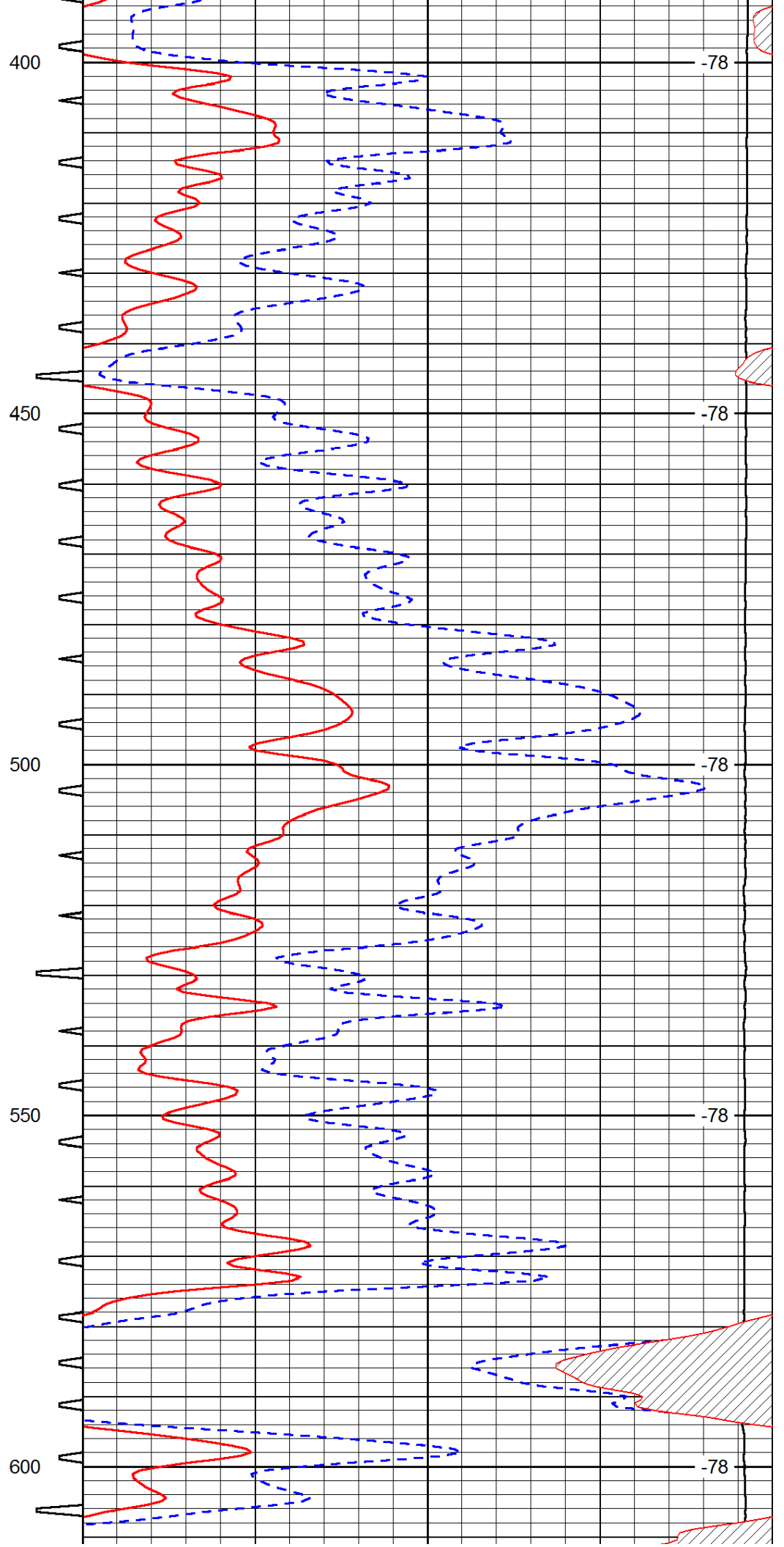
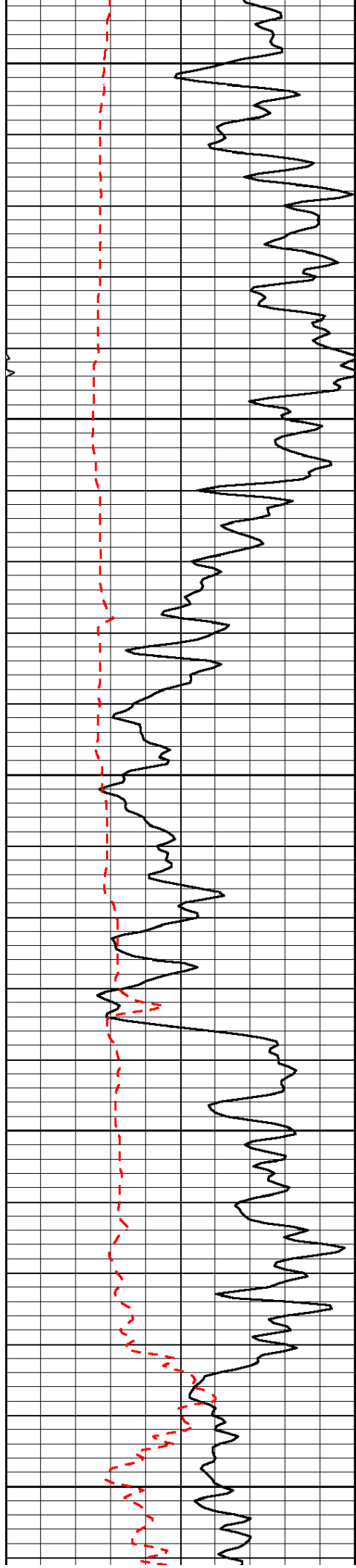
Damar, 1 South on 18 Highway to S Road, 1 1/2 West, 1/2 South, East Into

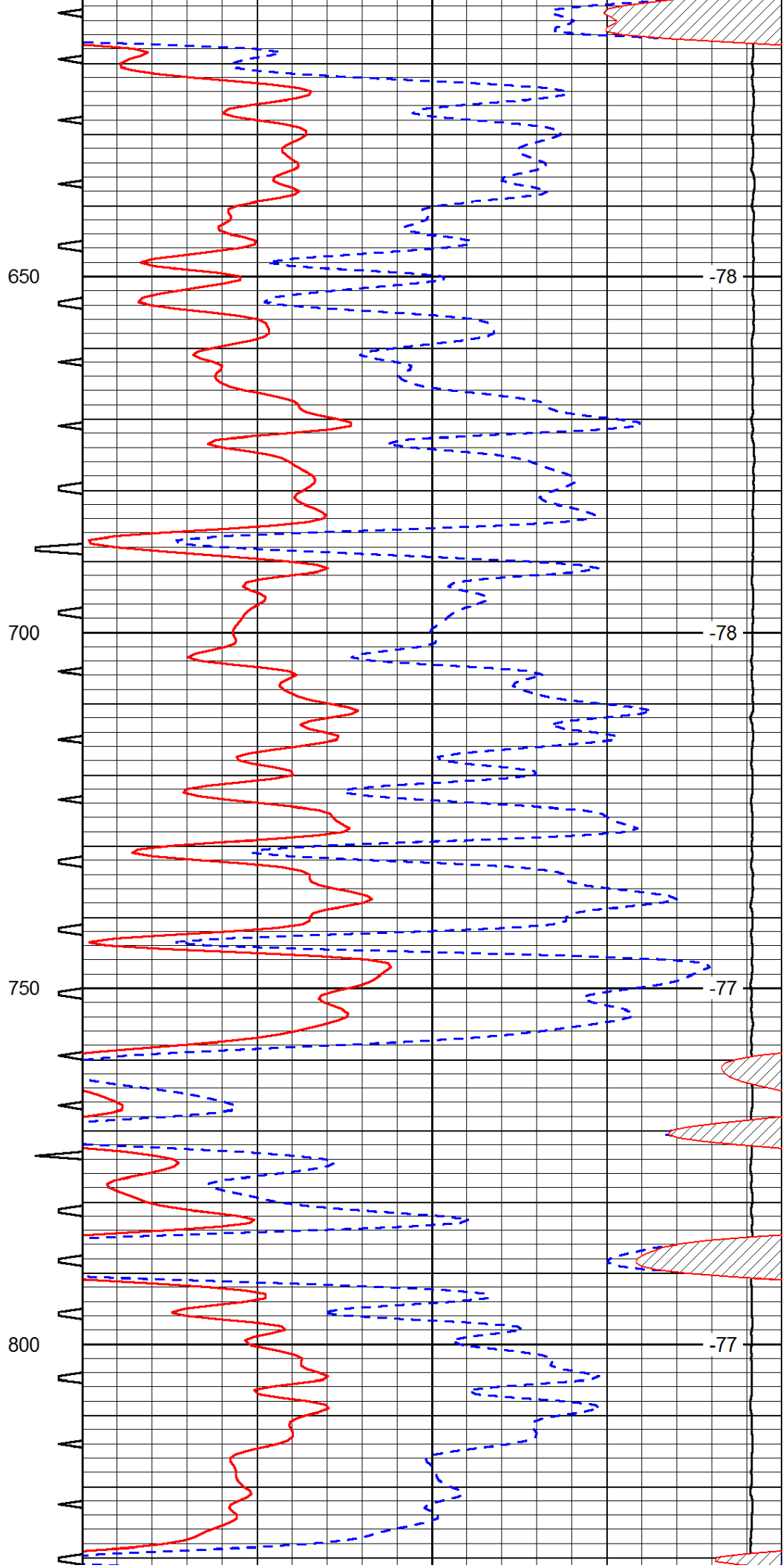
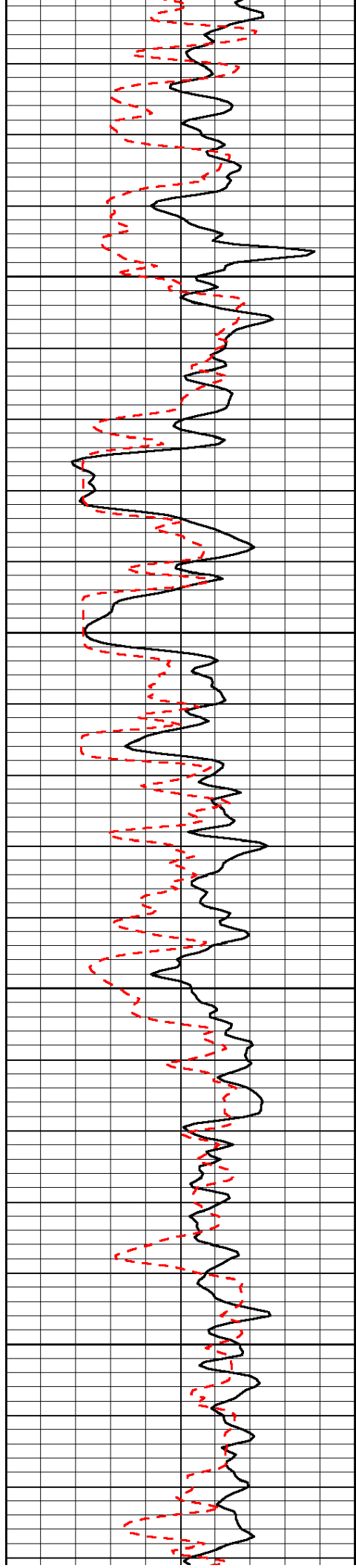
Database File: c:\warrior\data\carmen schmitt_arpin a #1-6\carmenschmidt_arpin_a_1-6hd.db
 Dataset Pathname: dil/carmstck
 Presentation Format: sonic
 Dataset Creation: Mon Feb 17 21:24:49 2014
 Charted by: Depth in Feet scaled 1:240

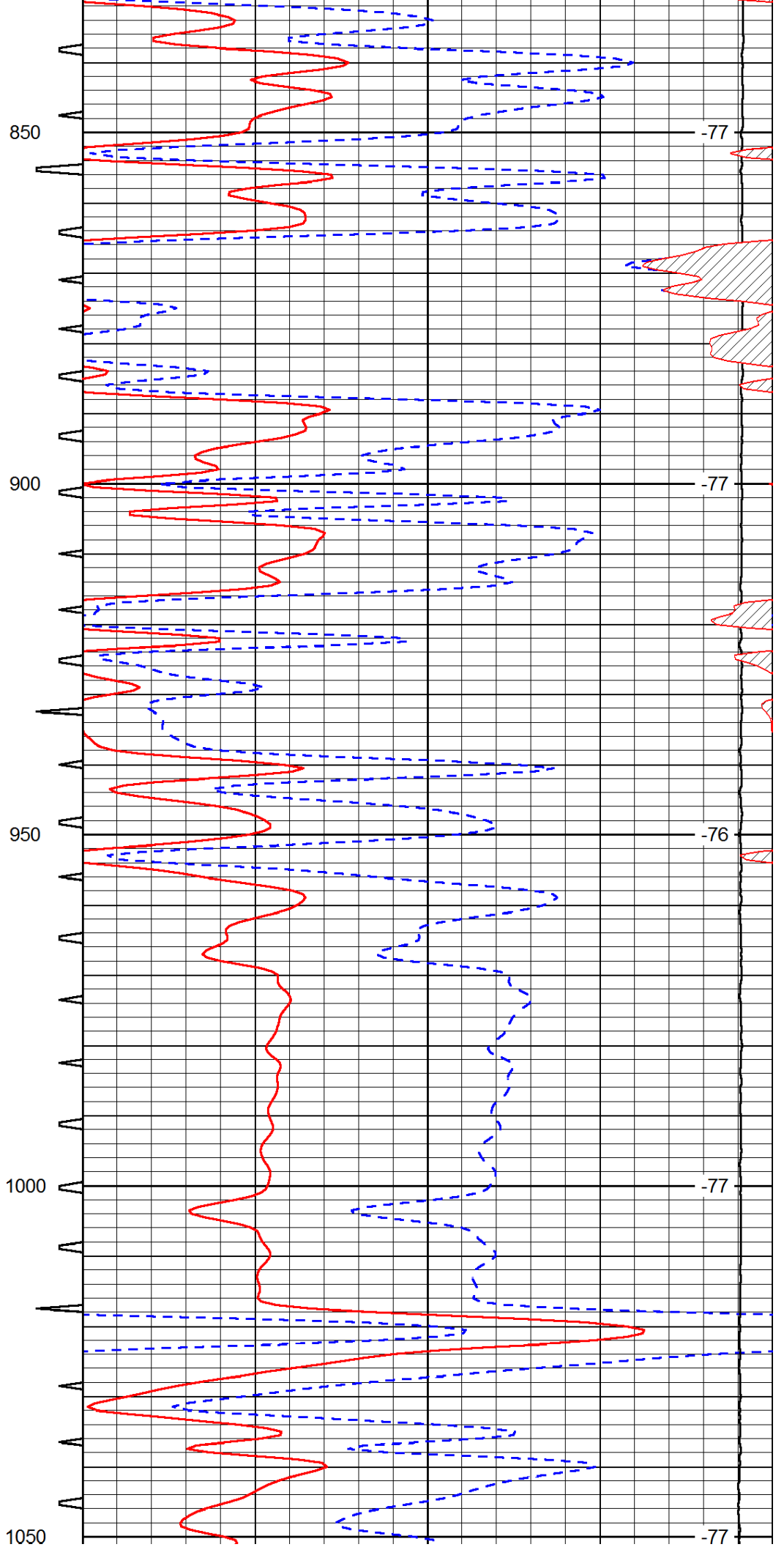
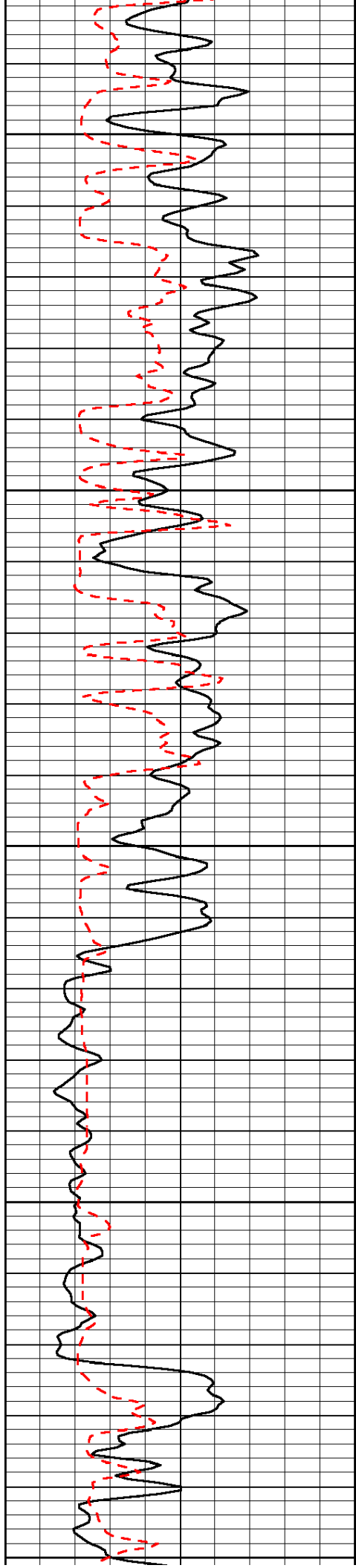
0	Gamma Ray	150	Sonic Int	140	Delta Time (usec/ft)	40
150	Gamma Ray	300	5	0	SPOR	-10
6	Caliper (GAPI)	16		15000	LTEN (lb)	0

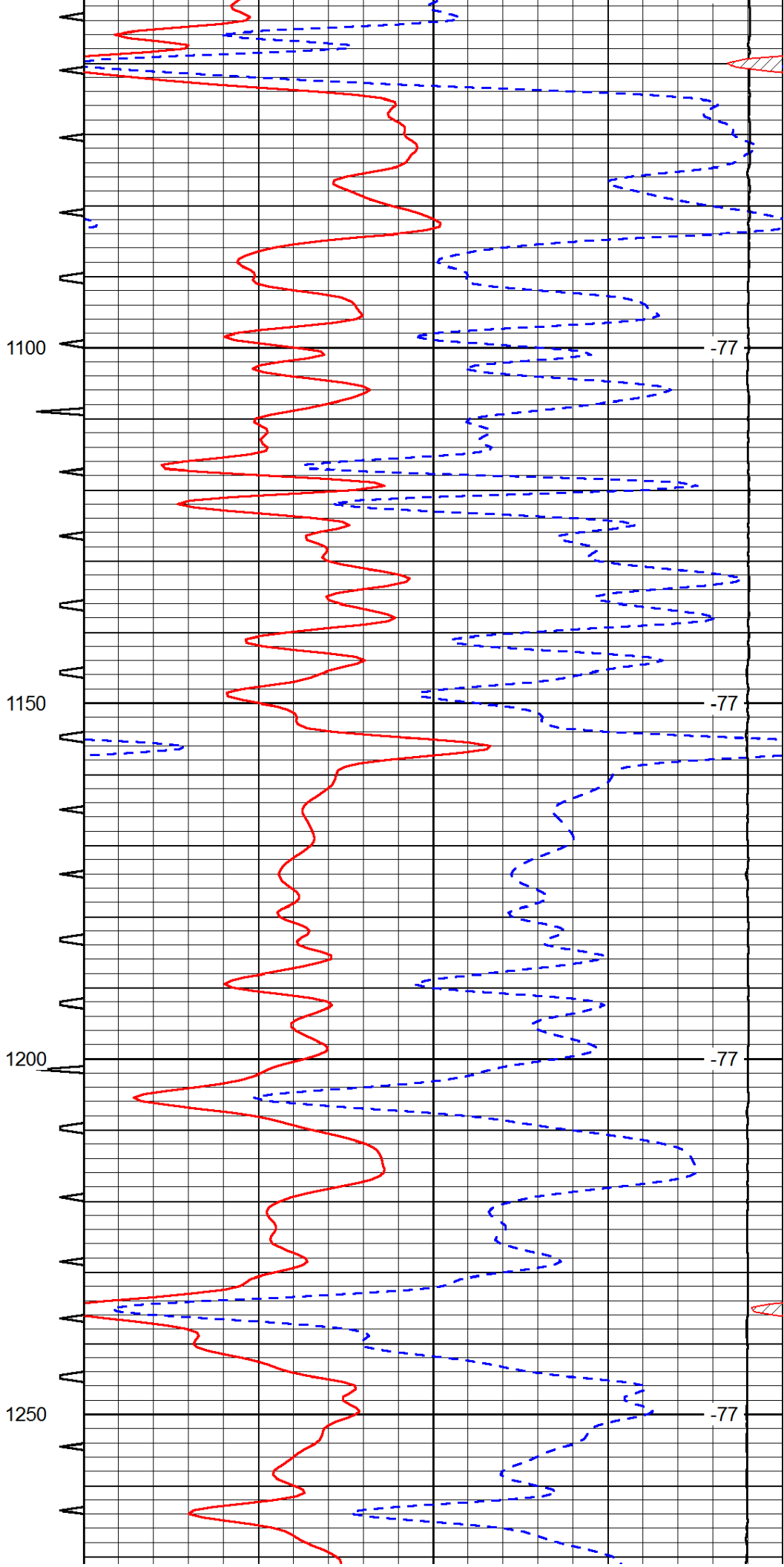
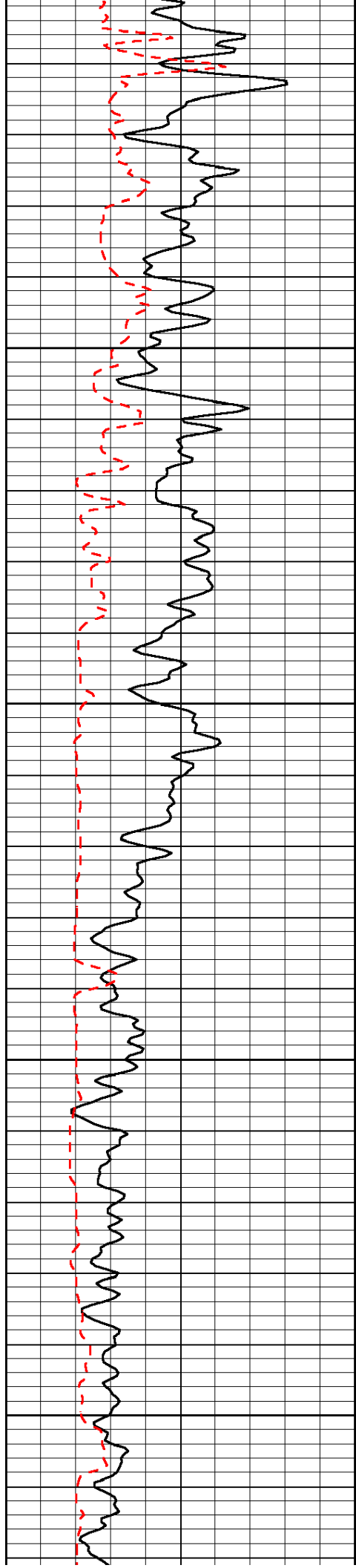
LSPD

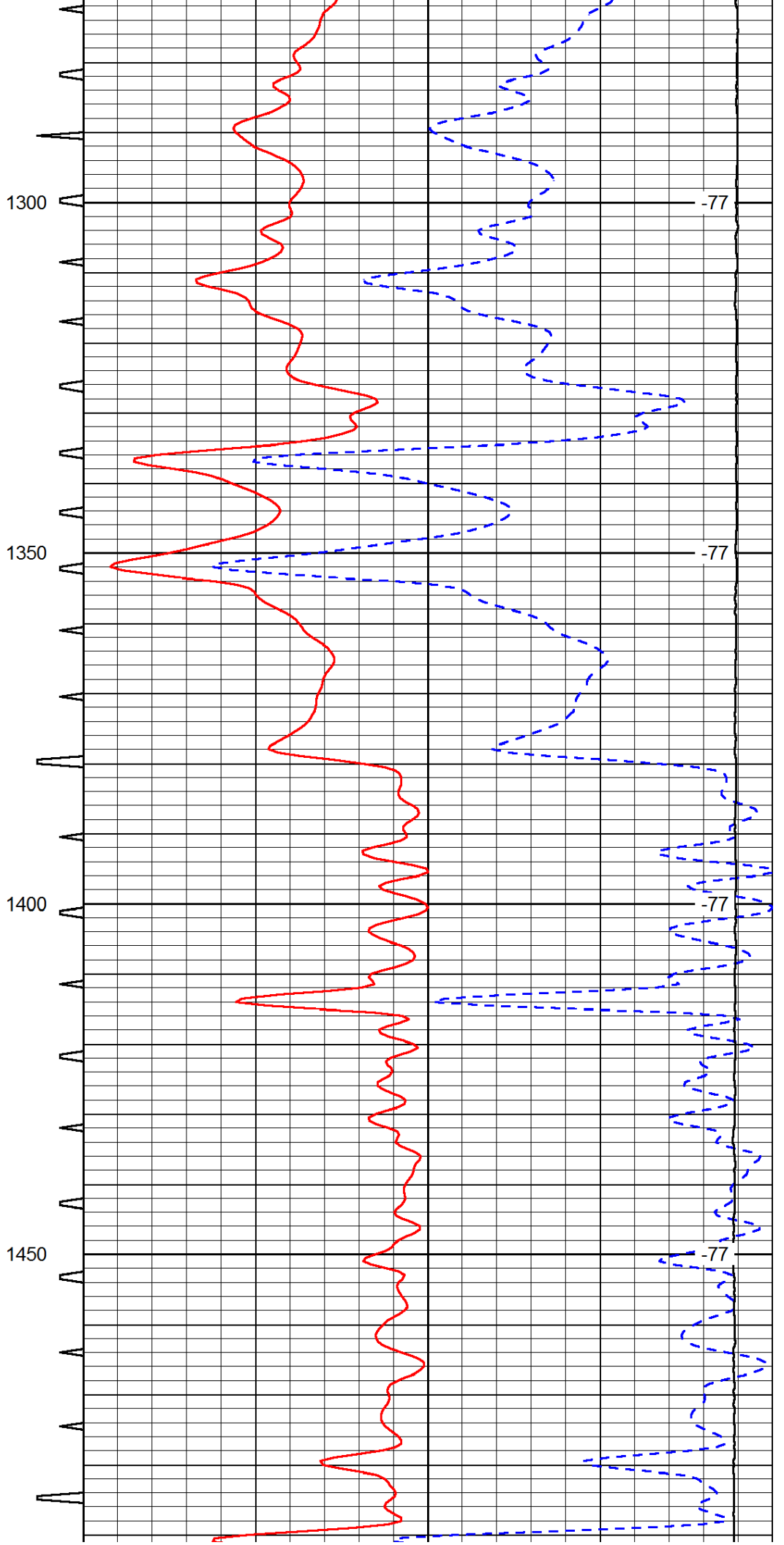
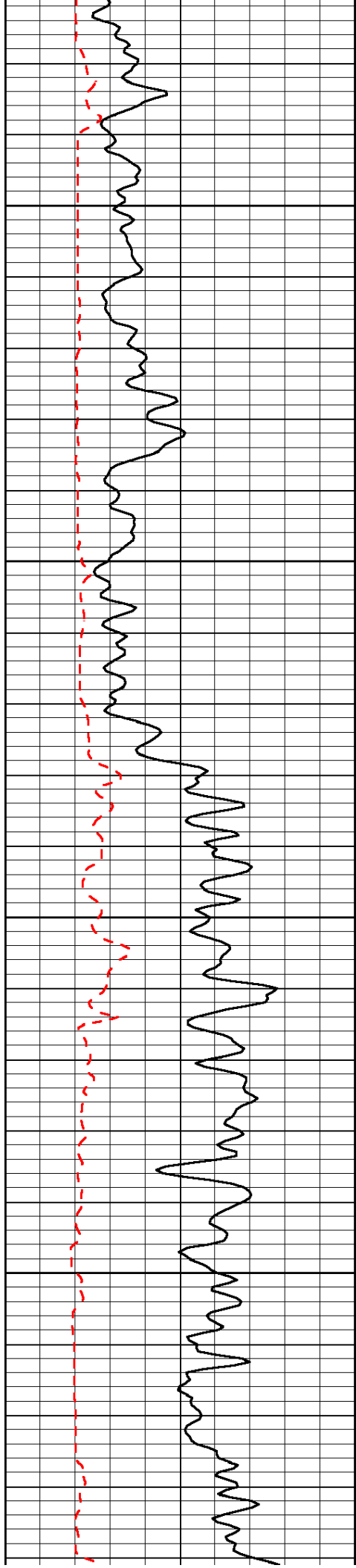


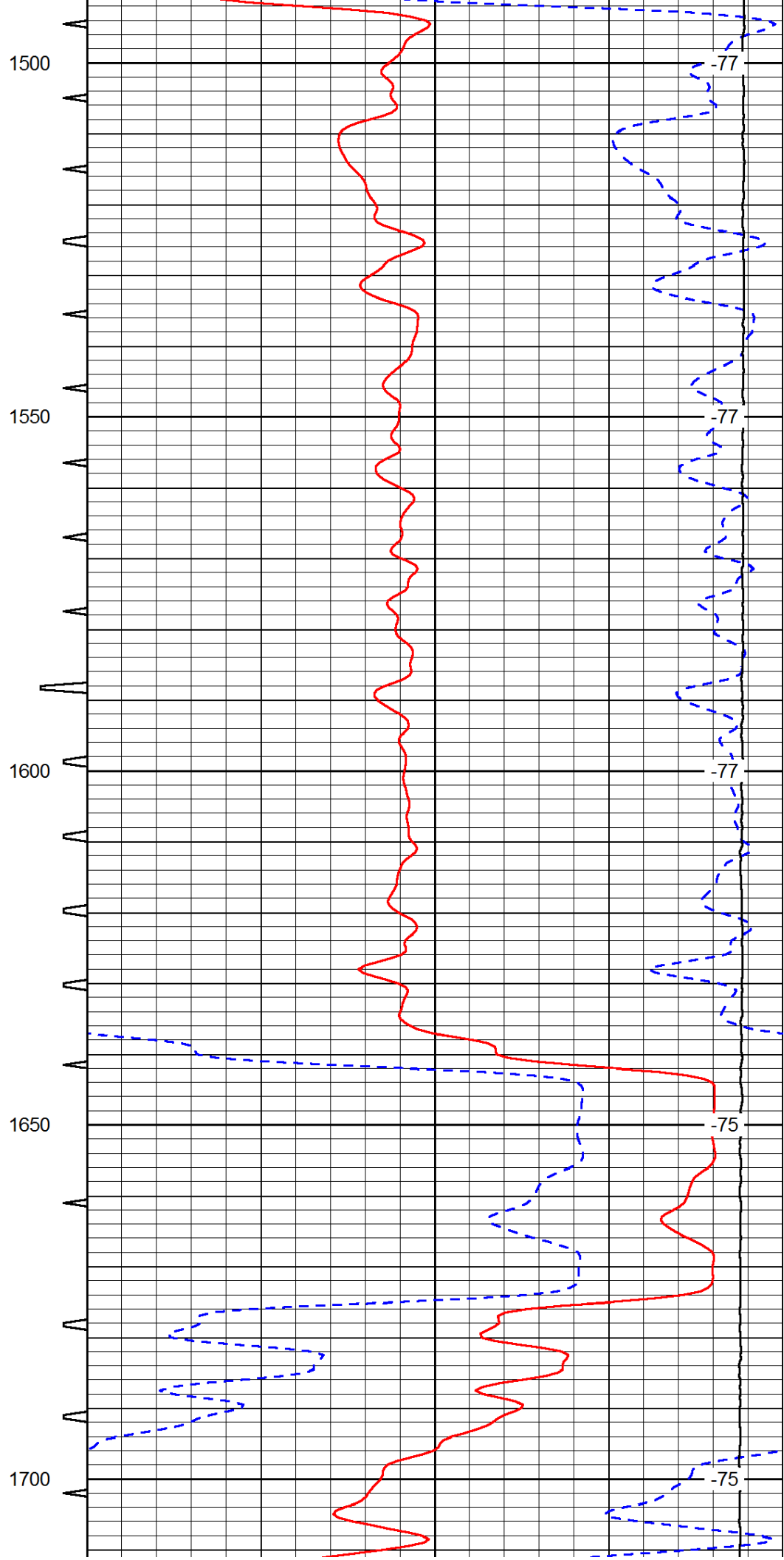
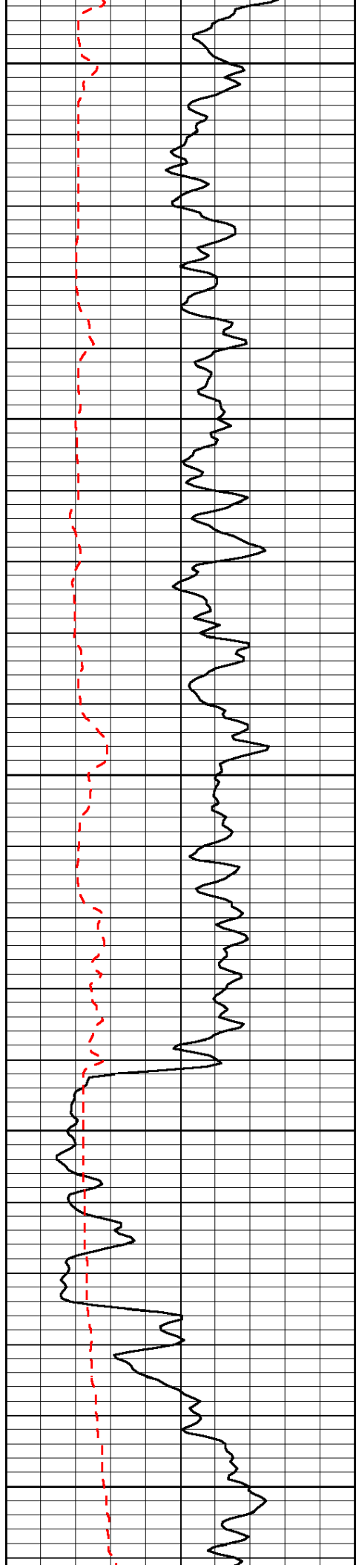


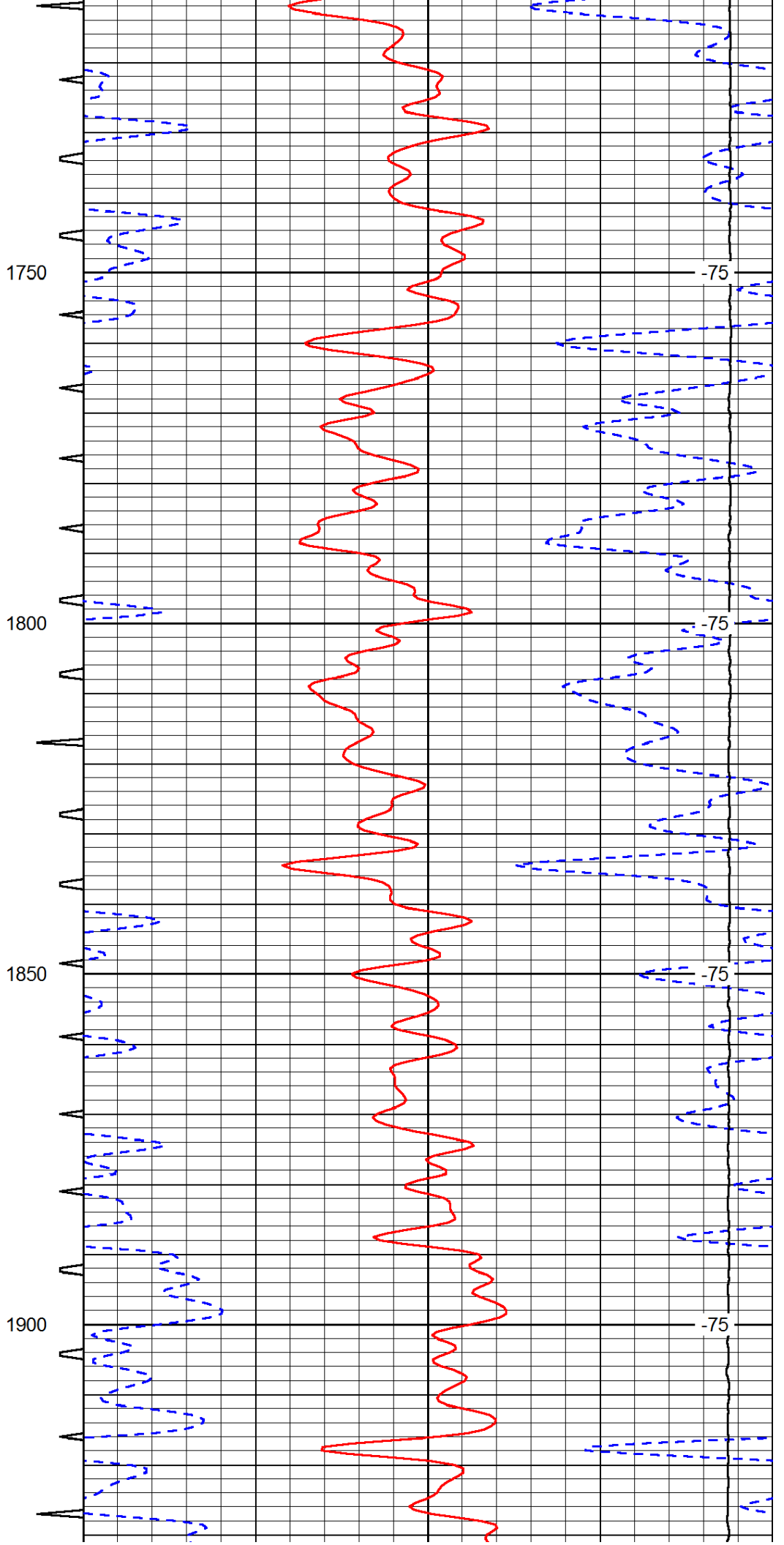
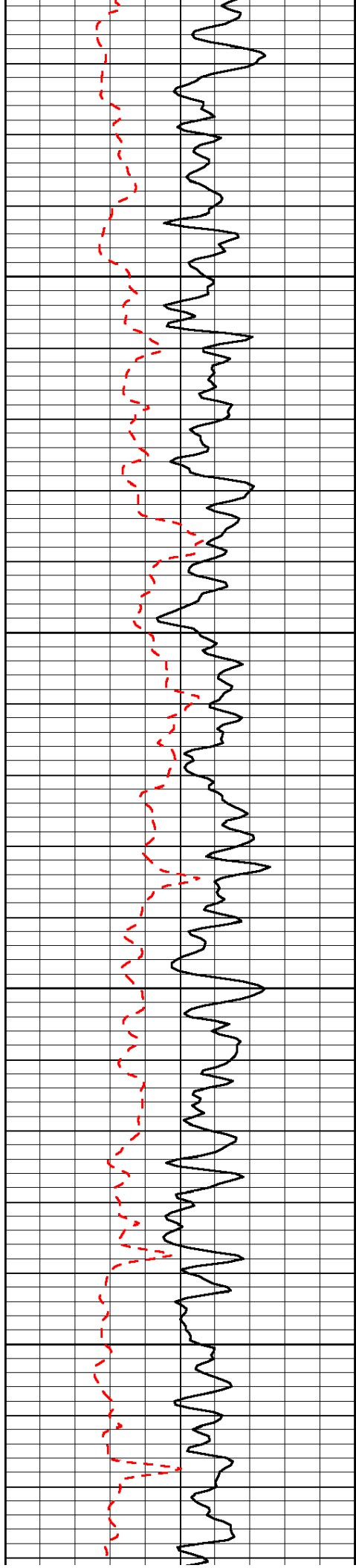


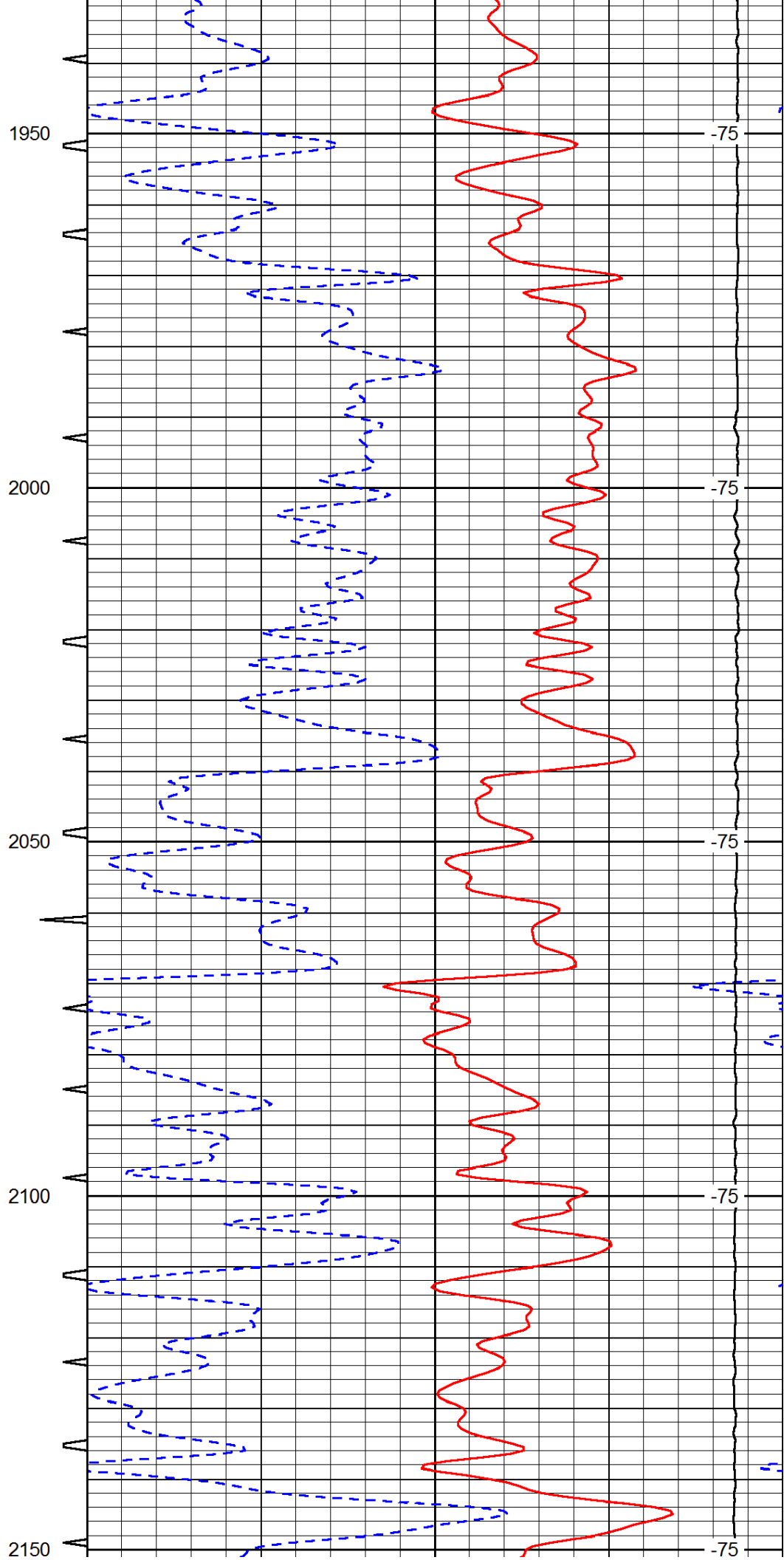
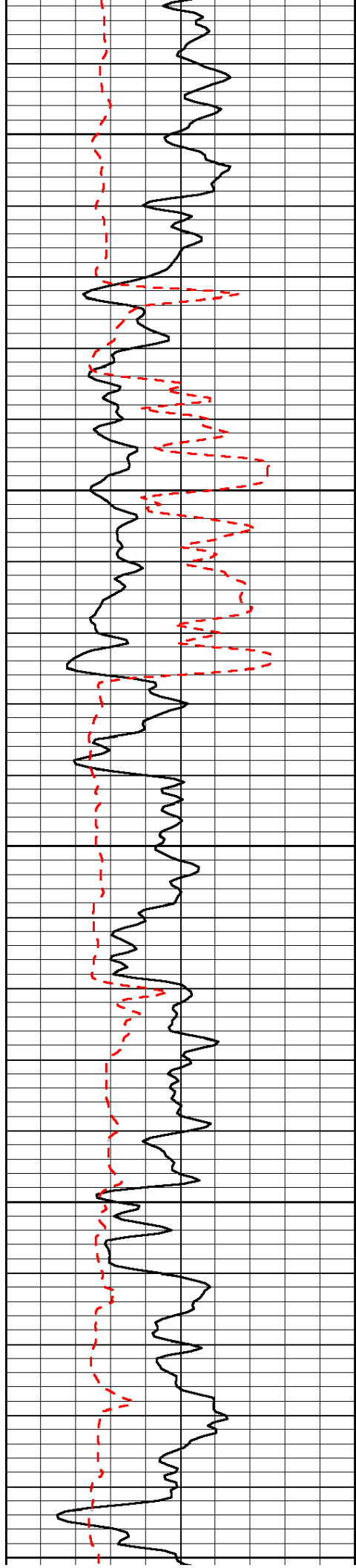


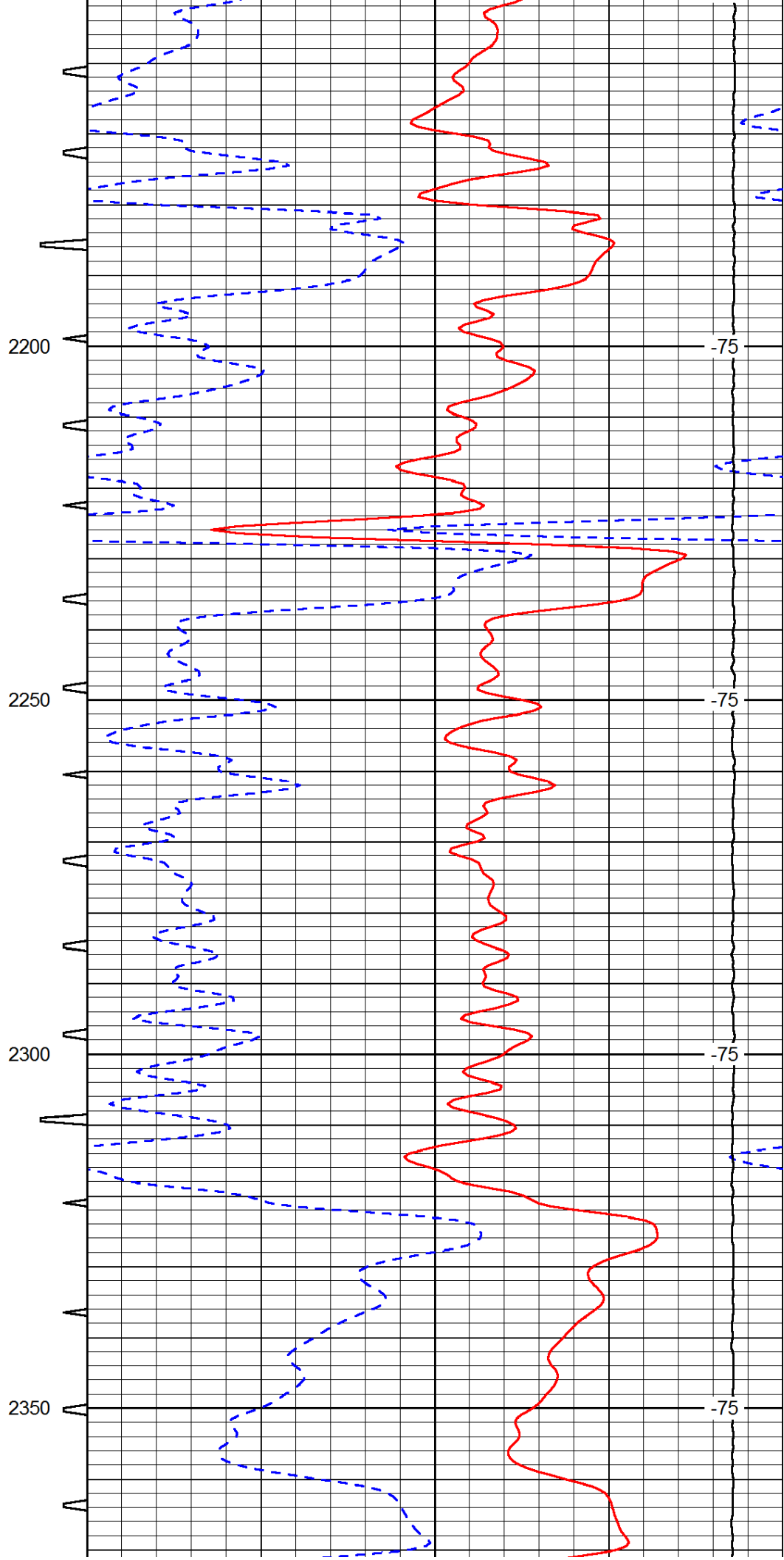
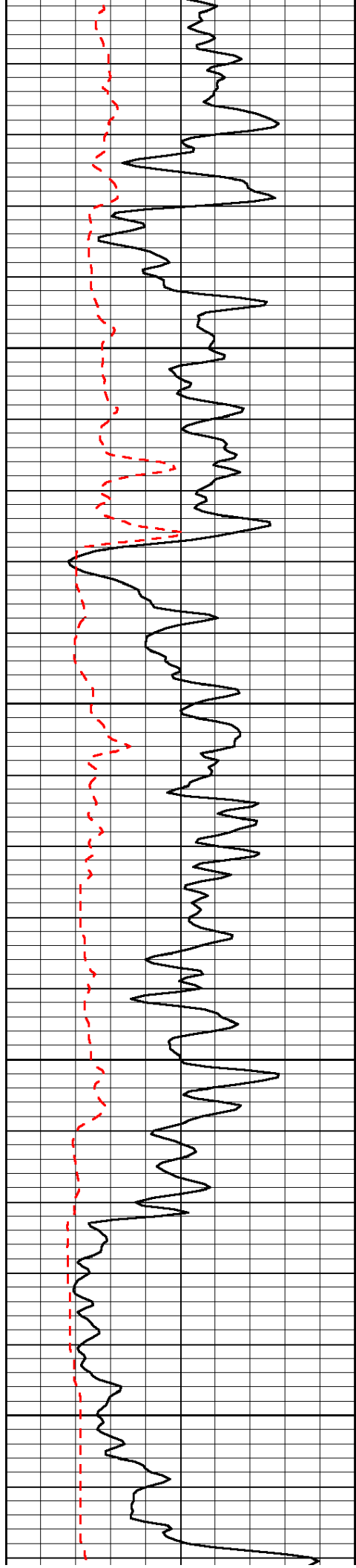


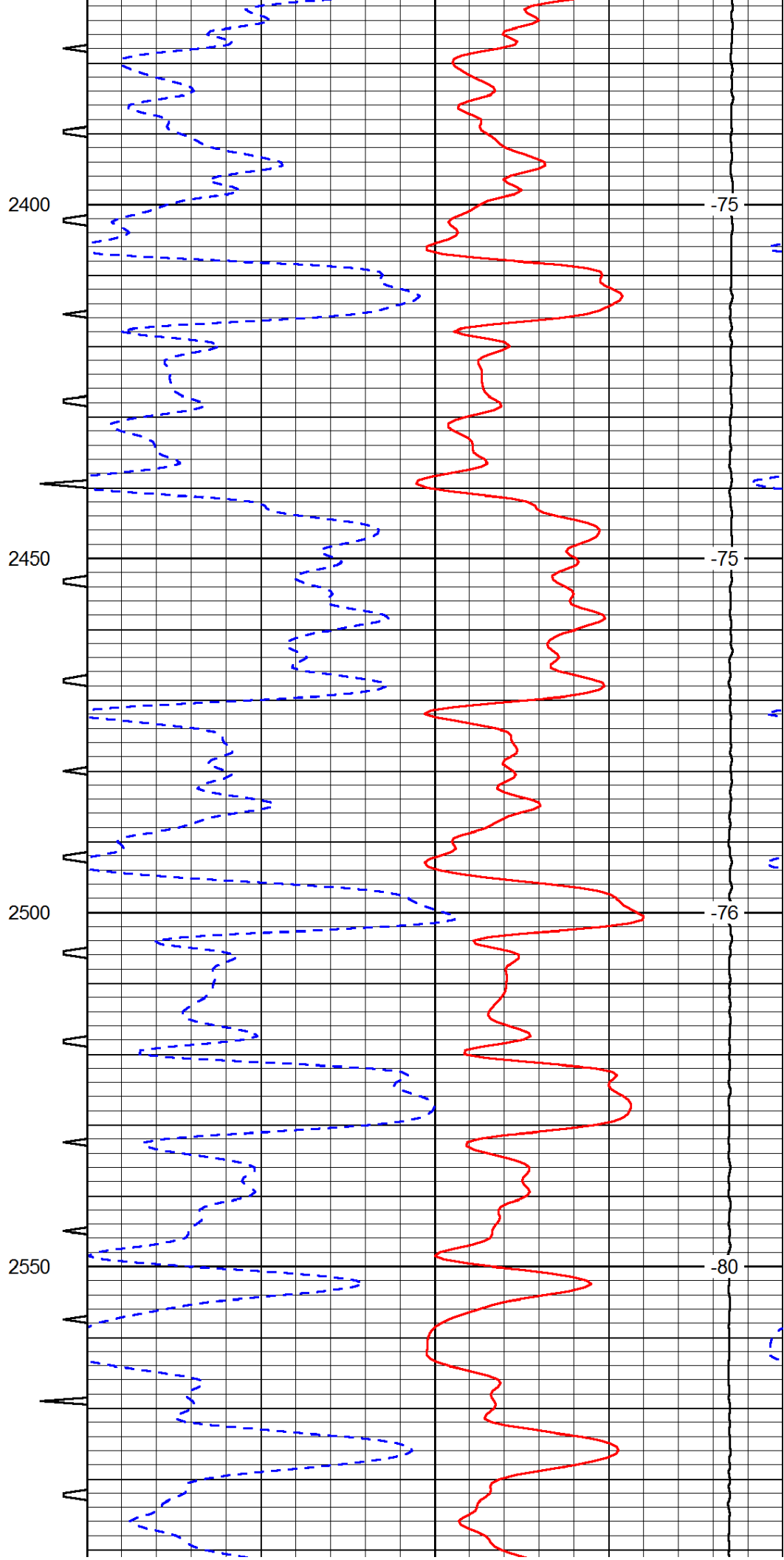
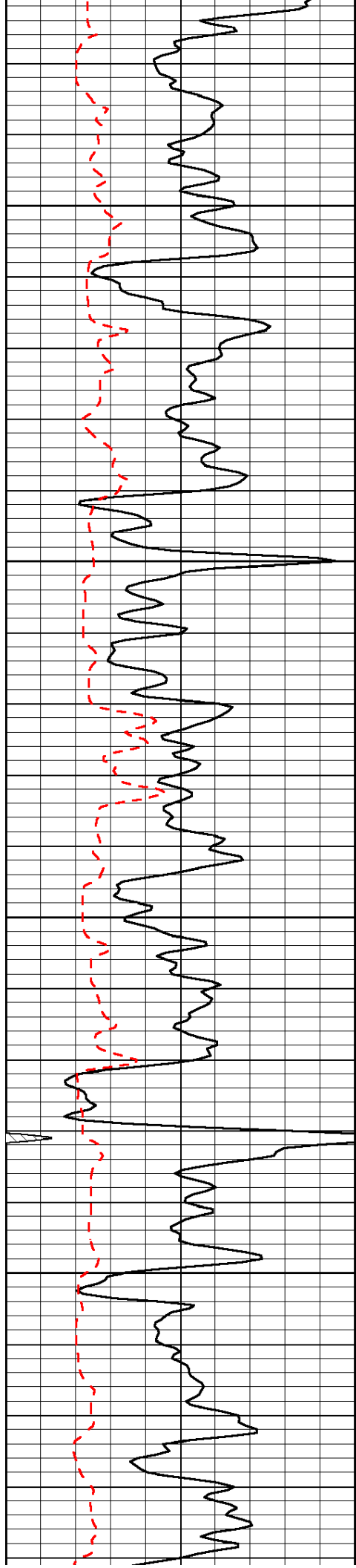


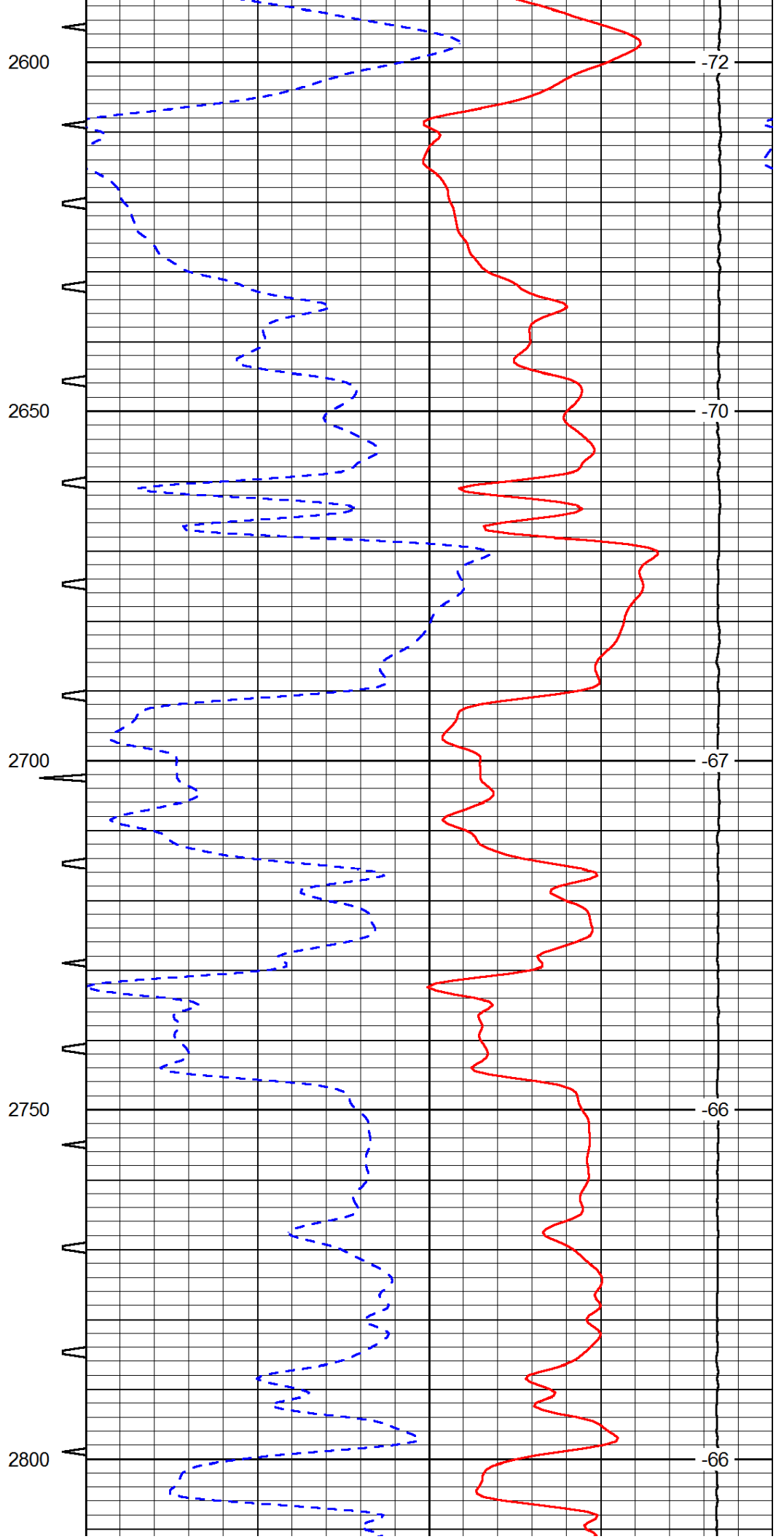
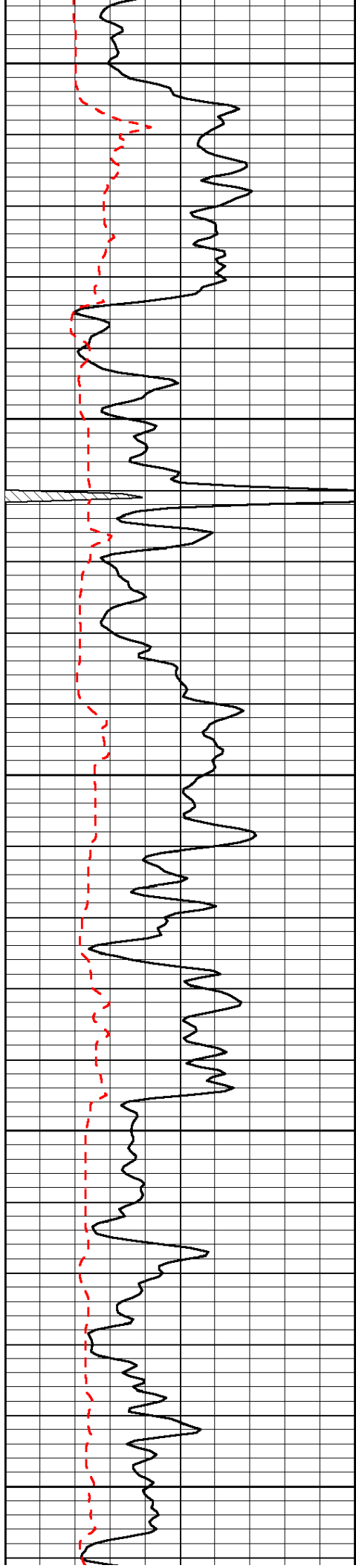


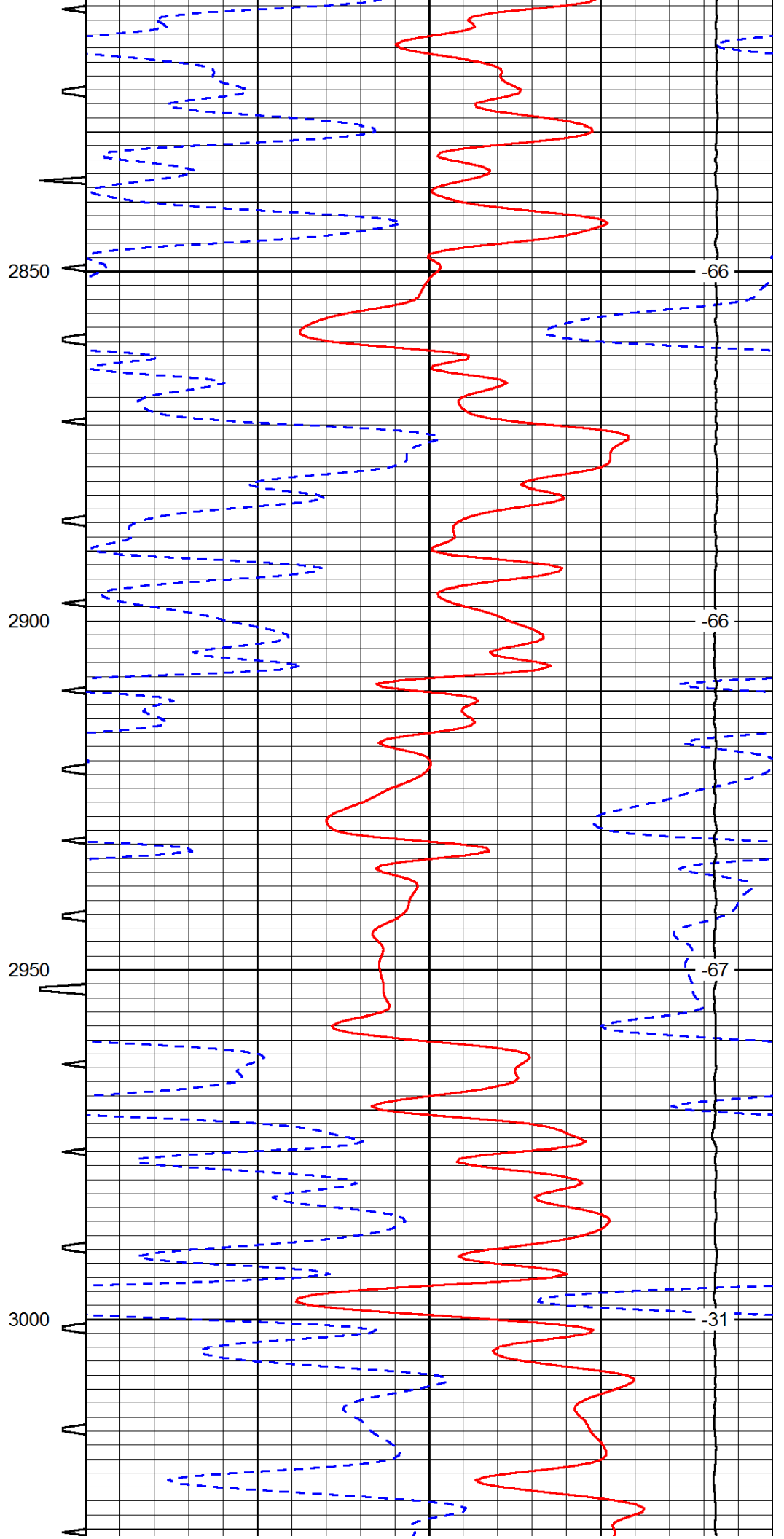
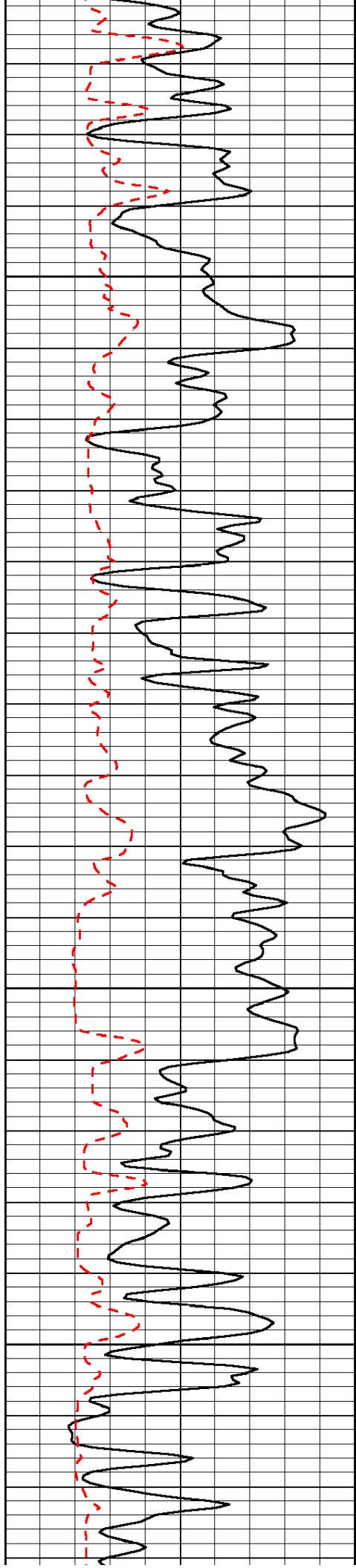


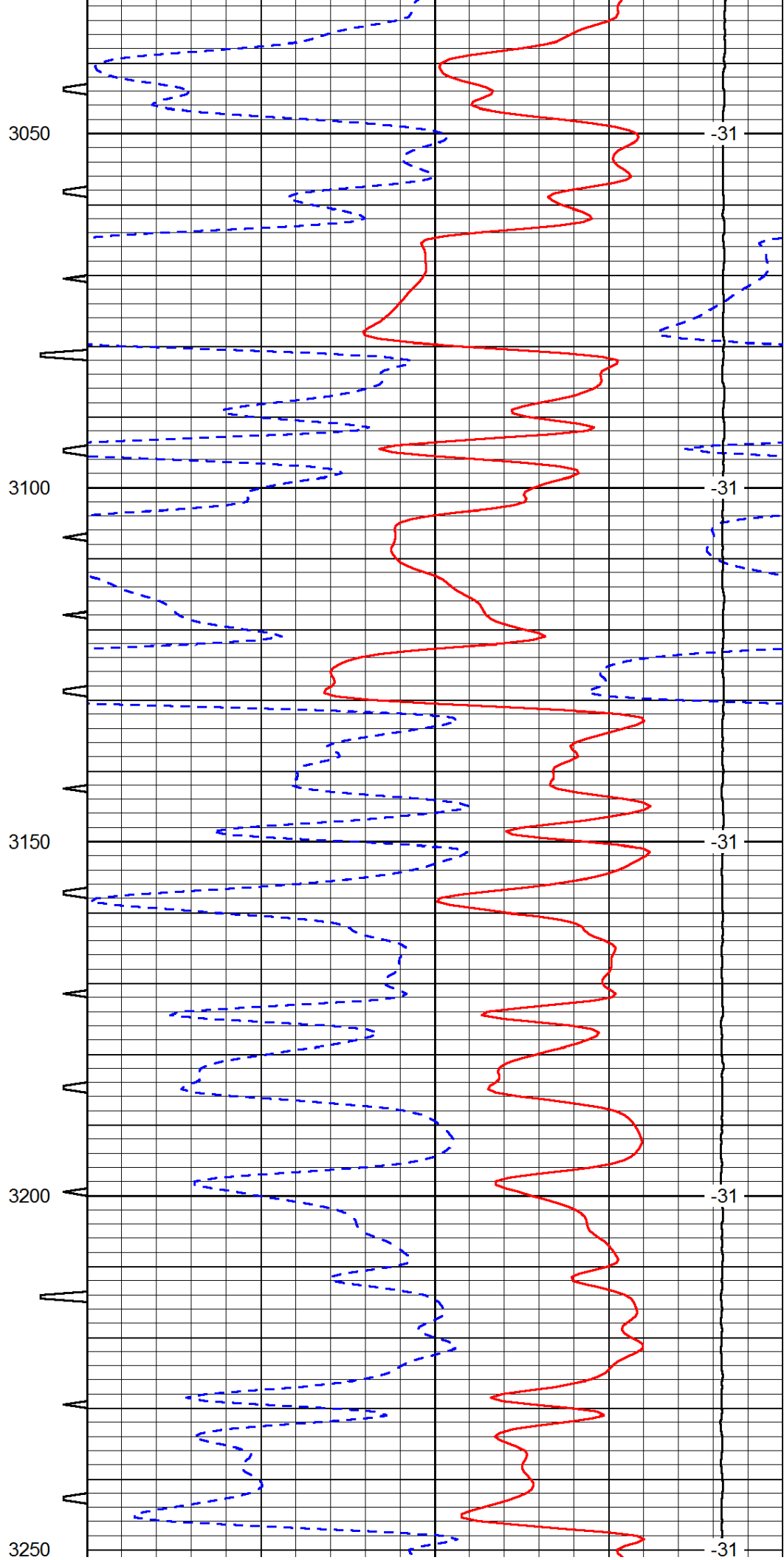
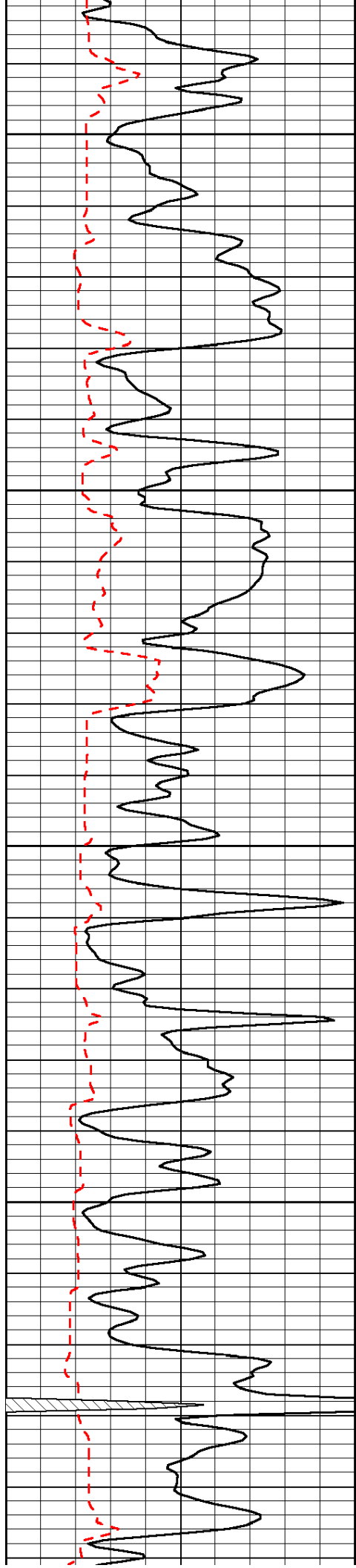


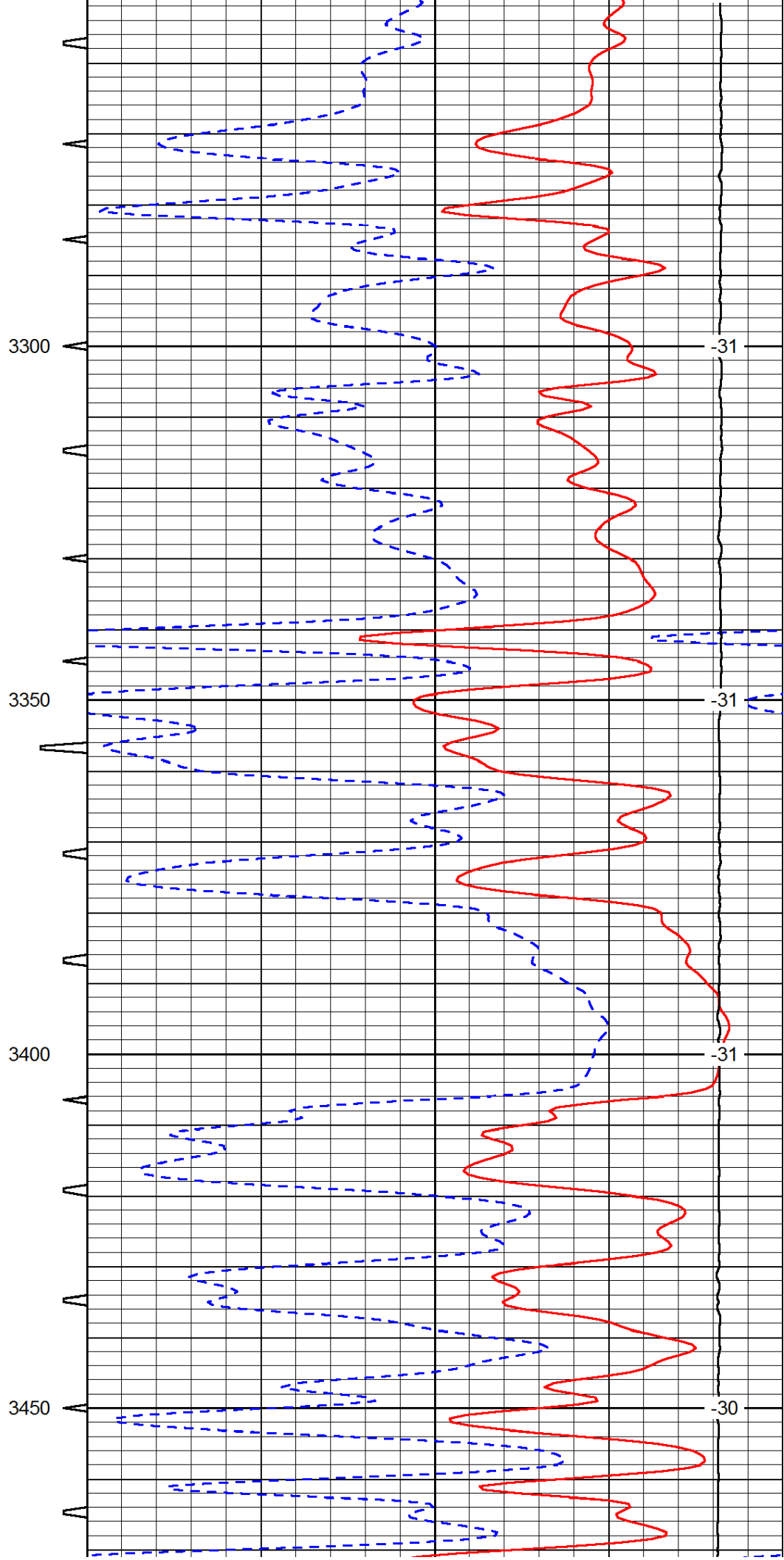
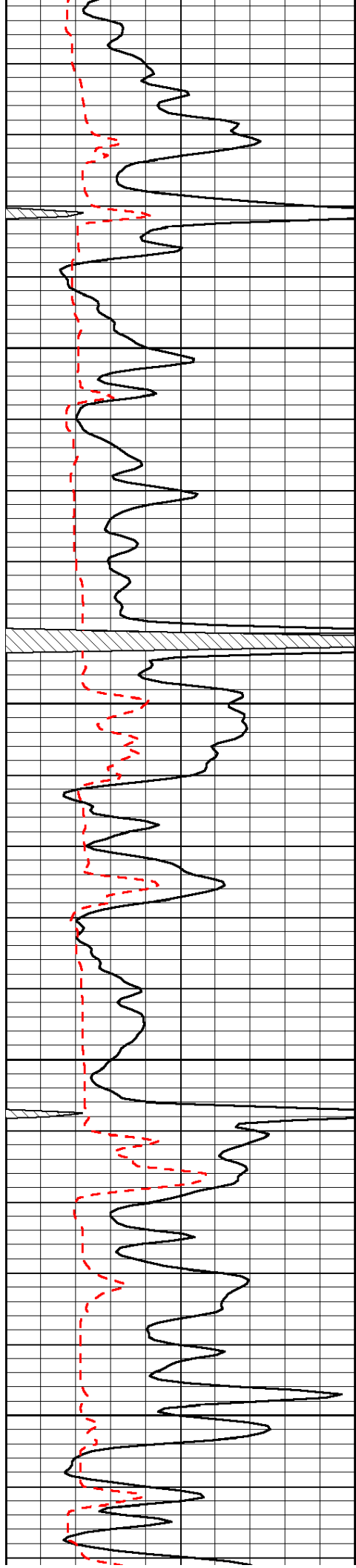


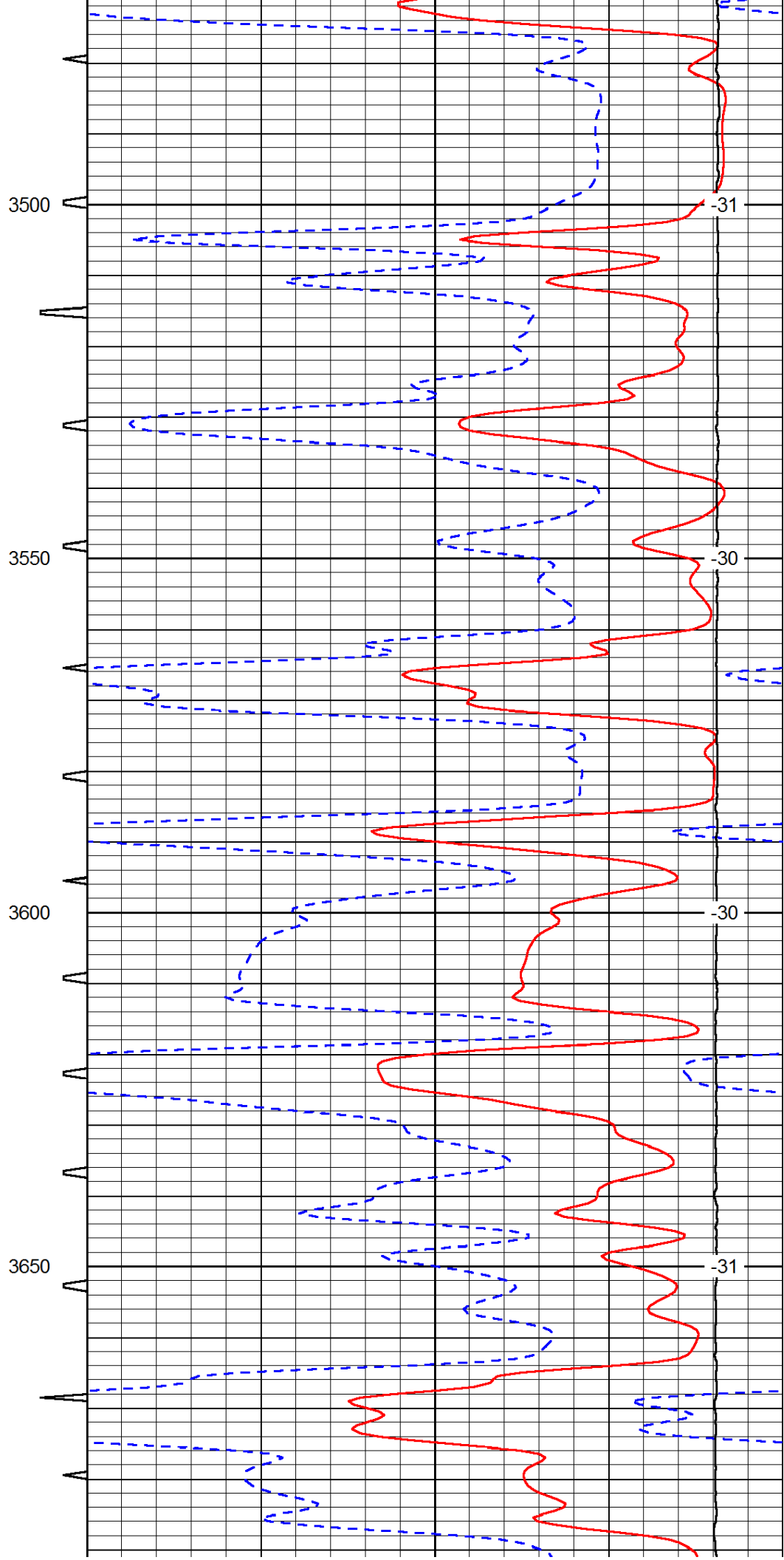
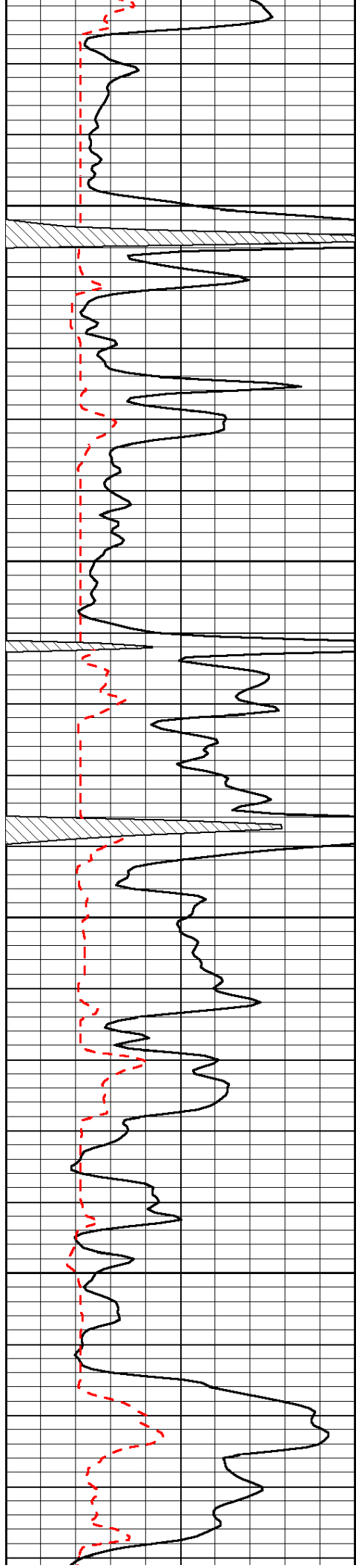


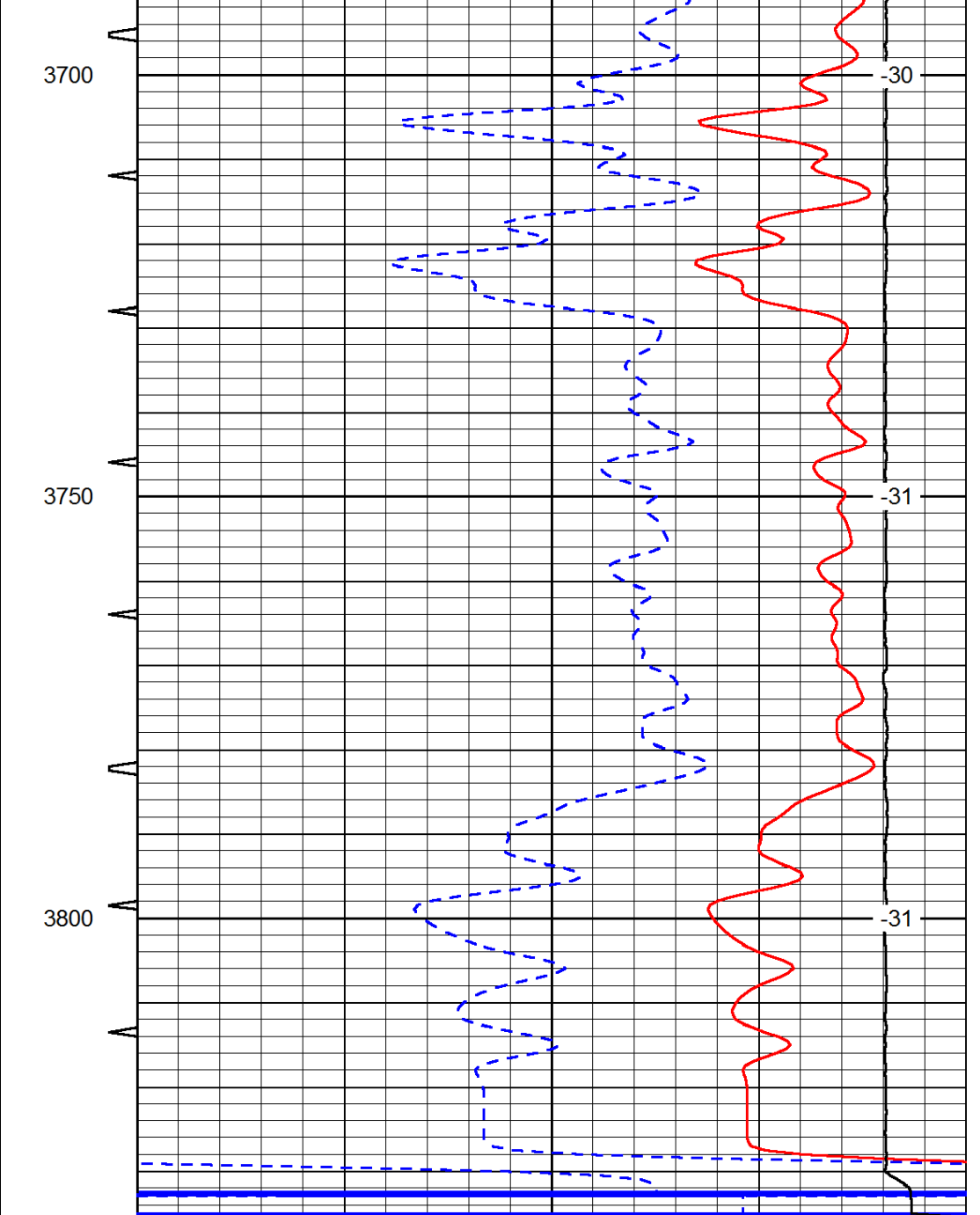
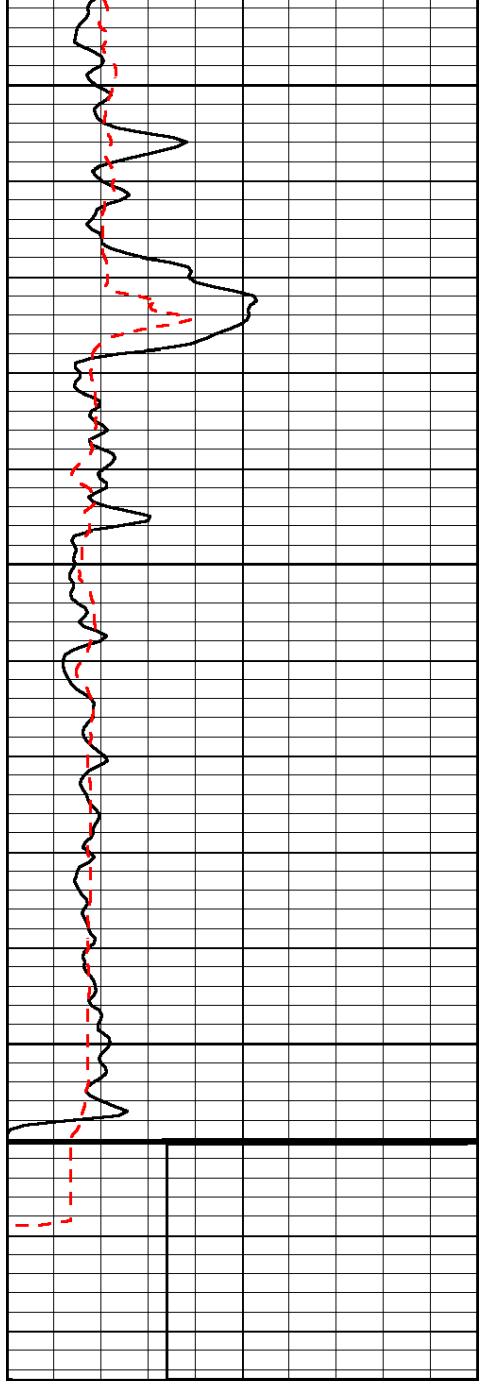












0	Gamma Ray	150	Sonic Int	140	Delta Time (usec/ft)	40
150	Gamma Ray	300	5	0	SPOR	-10
6	Caliper (GAPI)	16		15000	LTEN (lb)	0

LSPD