
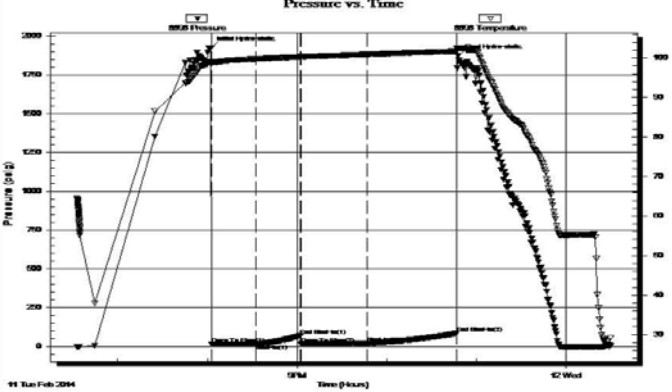


SUMMARY OF DAILY ACTIVITY

- 2-06-14 Spud 12:30 PM, set 8 5/8" surface casing to 222' w/ 150 sxs
Common 2%Gel 3%CC, plug down 6:39PM, slope 1/2 degree
- 2-07-14 223', WOC, drill plug 7:00 AM
- 2-08-14 1745', drilling
- 2-09-14 2645', drilling
- 2-10-14 3305', drilling
- 2-11-14 3726', RTD 3780' @8:54AM, short trip, TOWB, slope 1 degree, logs,
DST # 1 straddle test 3674' to 3709' Arbuckle
- 2-12-14 3780' finish DST # 1, DST # 2 straddle test 3626' to 3672' "L" zone,
LDDP, run production casing, plug down 5:30 PM

DST # 1 STRADDLE TEST OF ARBUCKLE BOTTOM PACKER HELD


	DRILL STEM TEST REPORT																																						
	Sandlin Oil Corporation 621 17th St. STE2055 Denver CO 80293 ATTN: Herb Deines	15-12s-18w-Ellis Co Weber-Staab #1 Job Ticket: 56102 DST#: 1 Test Start: 2014.02.11 @ 18:32:45																																					
GENERAL INFORMATION:																																							
Formation: Arbuckle Deviated: No Whipstock: ft (KB) Time Tool Opened: 20:02:45 Time Test Ended: 00:30:05		Test Type: Conventional Straddle (Initial) Tester: Tate Lang Unit No: 49																																					
Interval: 3674.00 ft (KB) To 3709.00 ft (KB) (TVD) Total Depth: 3780.00 ft (KB) (TVD) Hole Diameter: 7.88 inches Hole Condition: Good		Reference Elevations: 2171.00 ft (KB) 2166.00 ft (CF) KB to GR/CF: 5.00 ft																																					
Serial #: 8898 Outside Press@RunDepth: 20.53 psig @ 3675.00 ft (KB) Start Date: 2014.02.11 End Date: 2014.02.12 Start Time: 18:32:46 End Time: 00:30:05		Capacity: 8000.00 psig Last Calib.: 2014.02.12 Time On Btm: 2014.02.11 @ 20:02:25 Time Off Btm: 2014.02.11 @ 22:47:45																																					
TEST COMMENT: Weak surface blow built to 3 in. Dead no blow back Weak surface blow built to 1 in. Dead no blow back																																							
Pressure vs. Time 		PRESSURE SUMMARY																																					
		<table border="1" style="width: 100%; border-collapse: collapse;"> <thead> <tr> <th>Time (Min.)</th> <th>Pressure (psig)</th> <th>Temp (deg F)</th> <th>Annotation</th> </tr> </thead> <tbody> <tr><td>0</td><td>1924.15</td><td>99.01</td><td>Initial Hydro-static</td></tr> <tr><td>1</td><td>15.67</td><td>98.45</td><td>Open To Flow (1)</td></tr> <tr><td>30</td><td>17.05</td><td>99.78</td><td>Shut-In(1)</td></tr> <tr><td>60</td><td>71.94</td><td>100.29</td><td>End Shut-In(1)</td></tr> <tr><td>61</td><td>15.78</td><td>100.30</td><td>Open To Flow (2)</td></tr> <tr><td>105</td><td>20.53</td><td>100.94</td><td>Shut-In(2)</td></tr> <tr><td>165</td><td>84.46</td><td>101.74</td><td>End Shut-In(2)</td></tr> <tr><td>166</td><td>1872.60</td><td>102.41</td><td>Final Hydro-static</td></tr> </tbody> </table>	Time (Min.)	Pressure (psig)	Temp (deg F)	Annotation	0	1924.15	99.01	Initial Hydro-static	1	15.67	98.45	Open To Flow (1)	30	17.05	99.78	Shut-In(1)	60	71.94	100.29	End Shut-In(1)	61	15.78	100.30	Open To Flow (2)	105	20.53	100.94	Shut-In(2)	165	84.46	101.74	End Shut-In(2)	166	1872.60	102.41	Final Hydro-static	
Time (Min.)	Pressure (psig)	Temp (deg F)	Annotation																																				
0	1924.15	99.01	Initial Hydro-static																																				
1	15.67	98.45	Open To Flow (1)																																				
30	17.05	99.78	Shut-In(1)																																				
60	71.94	100.29	End Shut-In(1)																																				
61	15.78	100.30	Open To Flow (2)																																				
105	20.53	100.94	Shut-In(2)																																				
165	84.46	101.74	End Shut-In(2)																																				
166	1872.60	102.41	Final Hydro-static																																				
Recovery		Gas Rates																																					
<table border="1" style="width: 100%; border-collapse: collapse;"> <thead> <tr> <th>Length (ft)</th> <th>Description</th> <th>Volume (bbl)</th> </tr> </thead> <tbody> <tr><td>5.00</td><td>100% Heavy Oil</td><td>0.07</td></tr> <tr><td>20.00</td><td>10%O 90%M</td><td>0.28</td></tr> <tr><td> </td><td> </td><td> </td></tr> <tr><td> </td><td> </td><td> </td></tr> <tr><td> </td><td> </td><td> </td></tr> </tbody> </table>		Length (ft)	Description	Volume (bbl)	5.00	100% Heavy Oil	0.07	20.00	10%O 90%M	0.28										<table border="1" style="width: 100%; border-collapse: collapse;"> <thead> <tr> <th>Choke (inches)</th> <th>Pressure (psig)</th> <th>Gas Rate (Mcfd)</th> </tr> </thead> <tbody> <tr><td> </td><td> </td><td> </td></tr> <tr><td> </td><td> </td><td> </td></tr> <tr><td> </td><td> </td><td> </td></tr> </tbody> </table>		Choke (inches)	Pressure (psig)	Gas Rate (Mcfd)															
Length (ft)	Description	Volume (bbl)																																					
5.00	100% Heavy Oil	0.07																																					
20.00	10%O 90%M	0.28																																					
Choke (inches)	Pressure (psig)	Gas Rate (Mcfd)																																					

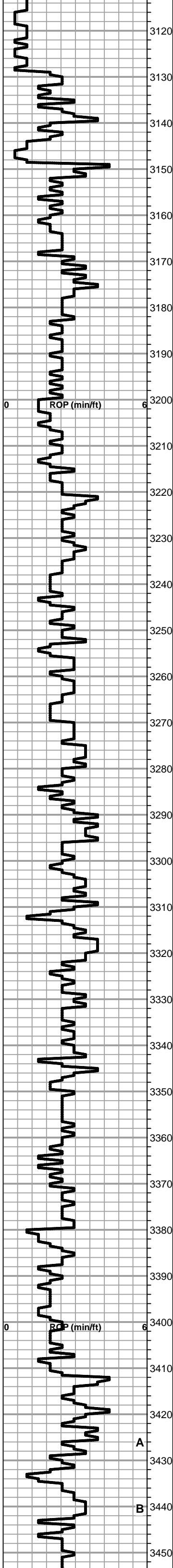
Trilobite Testing, Inc

Ref. No: 56102

Printed: 2014.02.12 @ 07:43:01

DST # 2 STRADDLE TEST 3626' TO 3672' BOTTOM PACKER HELD

	DRILL STEM TEST REPORT		
	Sandlin Oil Corporation 621 17th St. STE2055 Denver CO 80293 ATTN: Herb Deines	15-12s-18w-Ellis Co Weber-Staab #1 Job Ticket: 56103 DST#: 2 Test Start: 2014.02.12 @ 01:13:45	
GENERAL INFORMATION:			
Formation: "L" Deviated: No Whipstock: ft (KB) Time Tool Opened: 02:56:05 Time Test Ended: 07:18:05		Test Type: Conventional Straddle (Reset) Tester: Tate Lang Unit No: 49	



Lime, tan-brn, fnxln

Lime tan-lt gray, fnxln

Shale, lt-med gray, soft blocky to soft mud, calcareous

TOPEKA SPL 3148-977 ELog 3146-975

Lime, med brn, fn-micro xln

Lime, lt-med gray-grayish brn, fnxln, slight bedded chalk with decreasing gray color and increasing tan-lt brn

Lime, lt brn-lt gray, fnxln, slight bedded chalk

Lime, lt brn, fnxln, bedded chalk in part

Lime, lt-med brn-grayish brn, fnxln, pyritic in part near shale boundary

Lime, tan-lt brn, fn-vfxln

Lime, lt-med brn-med grayish brn, fnxln with scattered granular with chalk matrix and bedded chalk, NS

Lime, lt-med brn-grayish brn, fnxln, with chalky granular in part

Lime, lt-med brn, fnxln, beds of granular with chalky matrix, scattered fossil fragments

Lime, crm, fn-vfxln in part, some tan-lt brn, fnxln-granular

Lime, tan-lt brn, fnxln-granular in part, bedded chalk, thin fossil beds-fusulinids

Shale, black carbonaceous, fissile, blocky

Lime, crm, fn-micro xln, lithographic

Lime, crm-tan, fnxln, slight bedded chalk, NS

Lime, tan-lt brn, fnxln, increasing bedded chalk with lt chalk wash

Lime, tan-lt brn-grayish brn, fnxln

Shale, lime green, soft mud with thin fusulinids beds

Lime, tan-lt brn, fnxln, bedded chalk

Shale, gray-black carbonaceous, blocky

Lime, med brn, fn-vfxln, pyritic in part near shale boundary

Lime, tan-med brn, fn-vfxln with increasing bedded chalk

Lime, lt-med brn, fn-vfxln, slightly fossiliferous, bedded chalk

Lime, med brn-med grayish brn, fn-vfxln

Lime, lt-med brn, fn-vfxln, granular in part with chalk matrix

Lime, lt-dark brn, fnxln, slight bedded chalk

Lime, lt-dark brn, fnxln, slight bedded chalk

HEEBNER SHALE SPL 3379-1208 ELog 3376-1205

Shale, black carbonaceous, fissile, blocky

Lime, lt-med brn, fn-vfxln

Shale, dove gray-lime green, soft mud to sticky in part

TORONTO SPL 3399-1228 ELog 3400-1229

Lime, crm-tan, fn-vfxln

Lime, lt brn-lt grayish brn, fn-vfxln

LKC ELog 3423-1252

Lime, lt-med brn, fn-vfxln, slightly fossiliferous, few chips with scattered lt stain, no odor, NFO,

Lime, lt-med grayish brn, fn-vfxln, some speckling in part with chalky matrix on crush, NS

Shale, dove gray, soft mud forming sticky clumps

MICRO LOG SHOWS ZONE TO BE POORLY DEVELOPED AND LACKING PERMEABILITY

MICRO LOG INTERVAL FROM

