



**TRILOBITE
TESTING, INC.**

DRILL STEM TEST REPORT

Sandlin Oil Corporation
621 17th St. STE 2055
Denver CO 80293
ATTN: Herb Deines

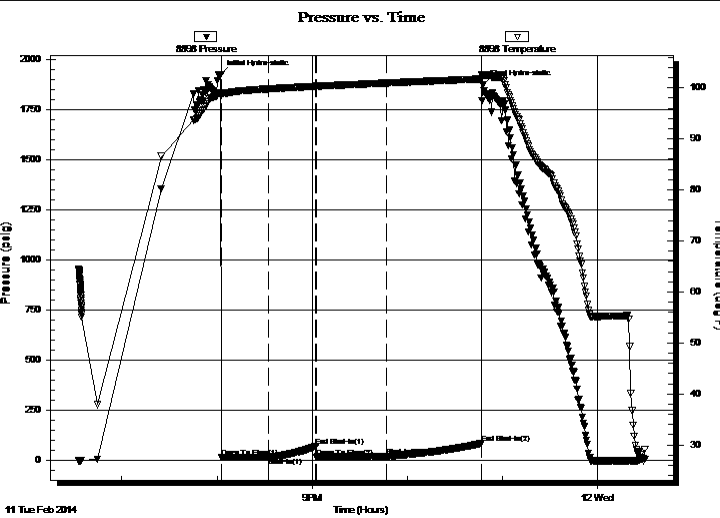
15-12s-18w-Ellis Co
Weber-Staab #1
Job Ticket: 56102 **DST#: 1**
Test Start: 2014.02.11 @ 18:32:45

GENERAL INFORMATION:

Formation: **Arbuckle**
Deviated: No Whipstock: ft (KB)
Time Tool Opened: 20:02:45
Time Test Ended: 00:30:05
Interval: **3674.00 ft (KB) To 3709.00 ft (KB) (TVD)**
Total Depth: 3780.00 ft (KB) (TVD)
Hole Diameter: 7.88 inches Hole Condition: Good
Test Type: Conventional Straddle (Initial)
Tester: Tate Lang
Unit No: 49
Reference Elevations: 2171.00 ft (KB)
2166.00 ft (CF)
KB to GR/CF: 5.00 ft

Serial #: 8898 Outside
Press @ Run Depth: 20.53 psig @ 3675.00 ft (KB) Capacity: 8000.00 psig
Start Date: 2014.02.11 End Date: 2014.02.12 Last Calib.: 2014.02.12
Start Time: 18:32:46 End Time: 00:30:05 Time On Btm: 2014.02.11 @ 20:02:25
Time Off Btm: 2014.02.11 @ 22:47:45

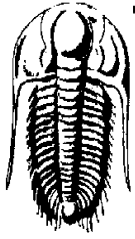
TEST COMMENT: Weak surface blow built to 3 in.
Dead no blow back
Weak surface blow built to 1 in.
Dead no blow back



PRESSURE SUMMARY			
Time (Min.)	Pressure (psig)	Temp (deg F)	Annotation
0	1924.15	99.01	Initial Hydro-static
1	15.67	98.45	Open To Flow (1)
30	17.05	99.78	Shut-In(1)
60	71.94	100.29	End Shut-In(1)
61	15.78	100.30	Open To Flow (2)
105	20.53	100.94	Shut-In(2)
165	84.46	101.74	End Shut-In(2)
166	1872.60	102.41	Final Hydro-static

Recovery		
Length (ft)	Description	Volume (bbl)
5.00	100% Heavy Oil	0.07
20.00	10%O 90%M	0.28

Gas Rates			
	Choke (inches)	Pressure (psig)	Gas Rate (Mcf/d)



**TRILOBITE
TESTING, INC.**

DRILL STEM TEST REPORT

Sandlin Oil Corporation
621 17th St. STE 2055
Denver CO 80293
ATTN: Herb Deines

15-12s-18w-Ellis Co
Weber-Staab #1
Job Ticket: 56102 **DST#: 1**
Test Start: 2014.02.11 @ 18:32:45

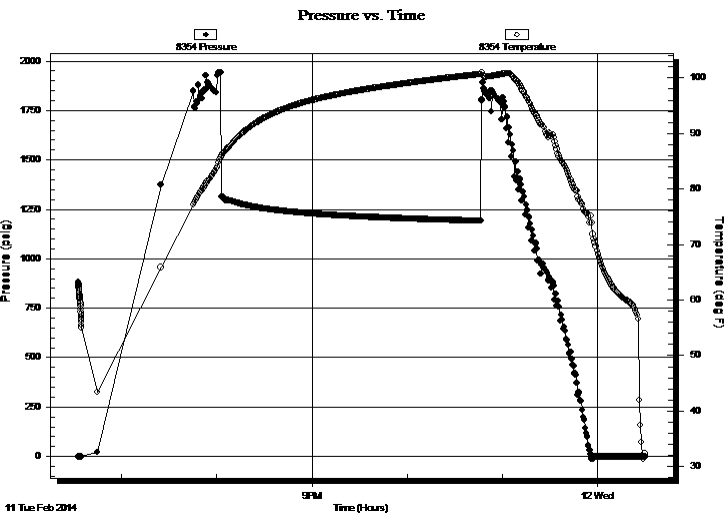
GENERAL INFORMATION:

Formation: **Arbuckle**
Deviated: No Whipstock: ft (KB)
Time Tool Opened: 20:02:45
Time Test Ended: 00:30:05
Interval: **3674.00 ft (KB) To 3709.00 ft (KB) (TVD)**
Total Depth: 3780.00 ft (KB) (TVD)
Hole Diameter: 7.88 inches Hole Condition: Good
Test Type: Conventional Straddle (Initial)
Tester: Tate Lang
Unit No: 49
Reference Elevations: 2171.00 ft (KB)
2166.00 ft (CF)
KB to GR/CF: 5.00 ft

Serial #: 8354 Below (Straddle)

Press @ Run Depth: psig @ 3715.00 ft (KB) Capacity: 8000.00 psig
Start Date: 2014.02.11 End Date: 2014.02.12 Last Calib.: 2014.02.12
Start Time: 18:32:53 End Time: 00:30:12 Time On Btm:
Time Off Btm:

TEST COMMENT: Weak surface blow built to 3 in.
Dead no blow back
Weak surface blow built to 1 in.
Dead no blow back



PRESSURE SUMMARY

Time (Min.)	Pressure (psig)	Temp (deg F)	Annotation

Recovery

Length (ft)	Description	Volume (bbl)
5.00	100% Heavy Oil	0.07
20.00	10%O 90%M	0.28

Gas Rates

	Choke (inches)	Pressure (psig)	Gas Rate (Mcf/d)



**TRILOBITE
TESTING, INC.**

DRILL STEM TEST REPORT

FLUID SUMMARY

Sandlin Oil Corporation
621 17th St. STE 2055
Denver CO 80293
ATTN: Herb Deines

15-12s-18w-Ellis Co
Weber-Staab #1
Job Ticket: 56102 **DST#: 1**
Test Start: 2014.02.11 @ 18:32:45

Mud and Cushion Information

Mud Type: Gel Chem	Cushion Type:	Oil API:	deg API
Mud Weight: 9.00 lb/gal	Cushion Length: ft	Water Salinity:	ppm
Viscosity: 50.00 sec/qt	Cushion Volume: bbl		
Water Loss: 8.79 in ³	Gas Cushion Type:		
Resistivity: ohm.m	Gas Cushion Pressure: psig		
Salinity: 6000.00 ppm			
Filter Cake: 1.00 inches			

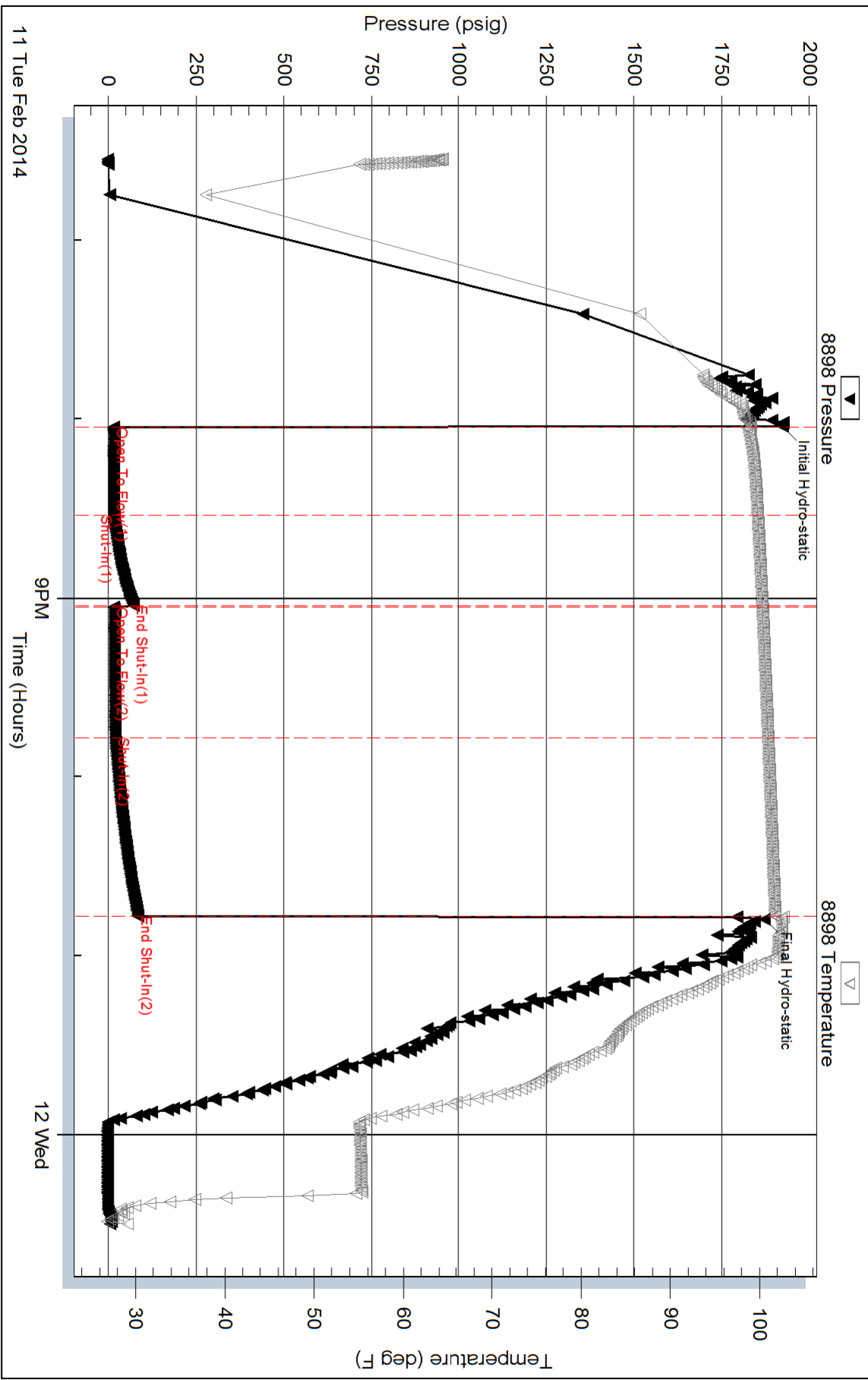
Recovery Information

Recovery Table

Length ft	Description	Volume bbl
5.00	100% Heavy Oil	0.070
20.00	10%O 90%M	0.281

Total Length: 25.00 ft Total Volume: 0.351 bbl
 Num Fluid Samples: 0 Num Gas Bombs: 0 Serial #:
 Laboratory Name: Laboratory Location:
 Recovery Comments:

Pressure vs. Time



Serial #: 8354

Below (Stratton) Oil Corporation

Weber-Staab #1

DST Test Number: 1

