



**TRILOBITE  
TESTING, INC.**

# DRILL STEM TEST REPORT

Sandlin Oil Corp

**15-12S-18W Ellis**

621 17th St 2055  
Denver Co 80293

**Staab-Karlin #2**

ATTN: Herb Dienes

Job Ticket: 56185

**DST#: 1**

Test Start: 2014.02.14 @ 12:18:00

## GENERAL INFORMATION:

Formation: **Arbuckle**

Deviated: No Whipstock: ft (KB)

Time Tool Opened: 14:12:30

Time Test Ended: 20:11:00

Test Type: Conventional Straddle (Initial)

Tester: Tim Phillips

Unit No: 59

**Interval: 3662.00 ft (KB) To 3694.00 ft (KB) (TVD)**

Reference Elevations: 2155.00 ft (KB)

Total Depth: 3760.00 ft (KB) (TVD)

2150.00 ft (CF)

Hole Diameter: 7.88 inches Hole Condition: Good

KB to GR/CF: 5.00 ft

## Serial #: 8736

Press @ Run Depth: 670.95 psig @ ft (KB)

Capacity: 8000.00 psig

Start Date: 2014.02.14

End Date:

2014.02.14

Last Calib.:

2014.02.14

Start Time: 12:18:05

End Time:

20:10:59

Time On Btm:

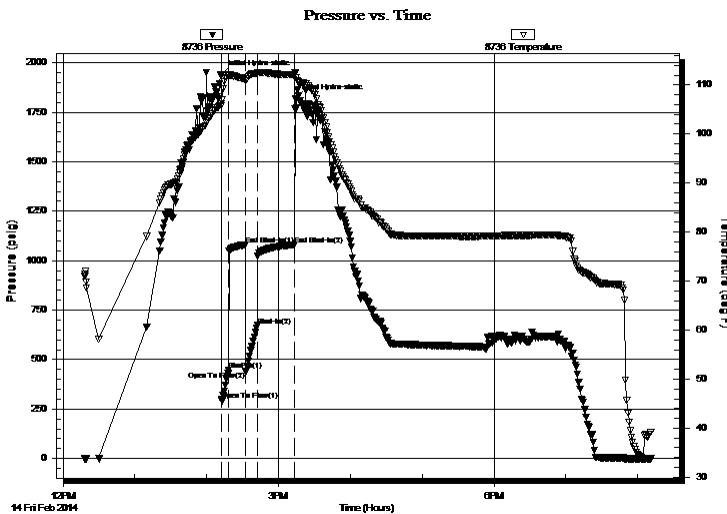
2014.02.14 @ 14:12:00

Time Off Btm:

2014.02.14 @ 15:14:00

**TEST COMMENT:** IFP-5- BOB in 30 sec  
ISI-15-Blow back built to 2.5 in  
FF-10-BOB in 15 sec  
FSI-30-Blow back built to 4.5 in

## PRESSURE SUMMARY



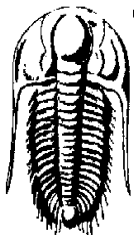
Time (Min.)	Pressure (psig)	Temp (deg F)	Annotation
0	1941.71	106.25	Initial Hydro-static
1	296.82	105.72	Open To Flow (1)
6	446.36	111.83	Shut-In(1)
21	1079.70	111.18	End Shut-In(1)
21	439.58	110.90	Open To Flow (2)
31	670.95	112.38	Shut-In(2)
62	1080.92	112.00	End Shut-In(2)
62	1817.72	112.32	Final Hydro-static

## Recovery

Length (ft)	Description	Volume (bbl)
2152.00	GO 85%O, 15% G	30.19
0.00	GIP 190 ft	0.00

## Gas Rates

	Choke (inches)	Pressure (psig)	Gas Rate (Mcf/d)



**TRILOBITE  
TESTING, INC.**

# DRILL STEM TEST REPORT

Sandlin Oil Corp

15-12S-18W Ellis

621 17th St 2055  
Denver Co 80293

Staab-Karlin #2

ATTN: Herb Dienes

Job Ticket: 56185

DST#: 1

Test Start: 2014.02.14 @ 12:18:00

## GENERAL INFORMATION:

Formation: **Arbuckle**

Deviated: No Whipstock: ft (KB)

Time Tool Opened: 14:12:30

Time Test Ended: 20:11:00

Test Type: Conventional Straddle (Initial)

Tester: Tim Phillips

Unit No: 59

Interval: **3662.00 ft (KB) To 3694.00 ft (KB) (TVD)**

Total Depth: 3760.00 ft (KB) (TVD)

Hole Diameter: 7.88 inches Hole Condition: Good

Reference Elevations: 2155.00 ft (KB)

2150.00 ft (CF)

KB to GR/CF: 5.00 ft

## Serial #: 8018

Press @RunDepth: psig @ ft (KB)

Start Date: 2014.02.14 End Date: 2014.02.14

Start Time: 12:18:05 End Time: 20:10:59

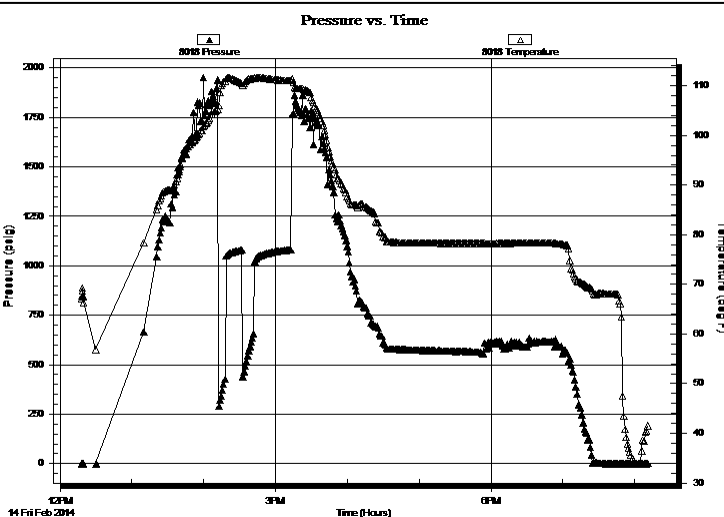
Capacity: 8000.00 psig

Last Calib.: 2014.02.14

Time On Btm:

Time Off Btm:

TEST COMMENT: IFP-5- BOB in 30 sec  
ISI-15-Blow back built to 2.5 in  
FF-10-BOB in 15 sec  
FSI-30-Blow back built to 4.5 in



## PRESSURE SUMMARY

Time (Min.)	Pressure (psig)	Temp (deg F)	Annotation

## Recovery

Length (ft)	Description	Volume (bbl)
2152.00	GO 85%O, 15% G	30.19
0.00	GIP 190 ft	0.00

## Gas Rates

	Choke (inches)	Pressure (psig)	Gas Rate (Mcf/d)



**TRILOBITE  
TESTING, INC.**

## DRILL STEM TEST REPORT

Sandlin Oil Corp

**15-12S-18W Ellis**

621 17th St 2055  
Denver Co 80293

**Staab-Karlin #2**

Job Ticket: 56185

**DST#: 1**

ATTN: Herb Dienes

Test Start: 2014.02.14 @ 12:18:00

### GENERAL INFORMATION:

Formation: **Arbuckle**

Deviated: No Whipstock: ft (KB)

Time Tool Opened: 14:12:30

Time Test Ended: 20:11:00

Test Type: Conventional Straddle (Initial)

Tester: Tim Phillips

Unit No: 59

**Interval: 3662.00 ft (KB) To 3694.00 ft (KB) (TVD)**

Reference Elevations: 2155.00 ft (KB)

Total Depth: 3760.00 ft (KB) (TVD)

2150.00 ft (CF)

Hole Diameter: 7.88 inches Hole Condition: Good

KB to GR/CF: 5.00 ft

### Serial #: 8319

Press @ Run Depth: psig @ ft (KB)

Capacity: 8000.00 psig

Start Date: 2014.02.14 End Date: 2014.02.14

Last Calib.: 2014.02.14

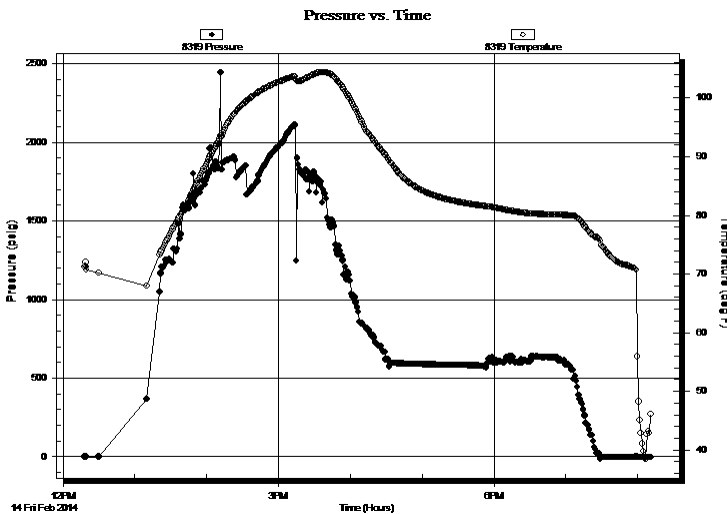
Start Time: 12:18:05 End Time: 20:11:14

Time On Btm:

Time Off Btm:

**TEST COMMENT:** IFP-5- BOB in 30 sec  
ISI-15-Blow back built to 2.5 in  
FF-10-BOB in 15 sec  
FSI-30-Blow back built to 4.5 in

### PRESSURE SUMMARY



Time (Min.)	Pressure (psig)	Temp (deg F)	Annotation

### Recovery

Length (ft)	Description	Volume (bbl)
2152.00	GO 85%O, 15% G	30.19
0.00	GIP 190 ft	0.00

### Gas Rates

	Choke (inches)	Pressure (psig)	Gas Rate (Mcf/d)



**TRILOBITE  
TESTING, INC.**

# DRILL STEM TEST REPORT

## FLUID SUMMARY

Sandlin Oil Corp

**15-12S-18W Ellis**

621 17th St 2055  
Denver Co 80293

**Staab-Karlin #2**

Job Ticket: 56185

**DST#: 1**

ATTN: Herb Dienes

Test Start: 2014.02.14 @ 12:18:00

### Mud and Cushion Information

Mud Type: Gel Chem

Cushion Type:

Oil API:

deg API

Mud Weight: 9.00 lb/gal

Cushion Length:

ft

Water Salinity:

ppm

Viscosity: 50.00 sec/qt

Cushion Volume:

bbbl

Water Loss: 8.77 in<sup>3</sup>

Gas Cushion Type:

Resistivity: ohm.m

Gas Cushion Pressure:

psig

Salinity: 7000.00 ppm

Filter Cake: 1.00 inches

### Recovery Information

Recovery Table

Length ft	Description	Volume bbl
2152.00	GO 85%O, 15% G	30.187
0.00	GIP 190 ft	0.000

Total Length: 2152.00 ft      Total Volume: 30.187 bbl

Num Fluid Samples: 0

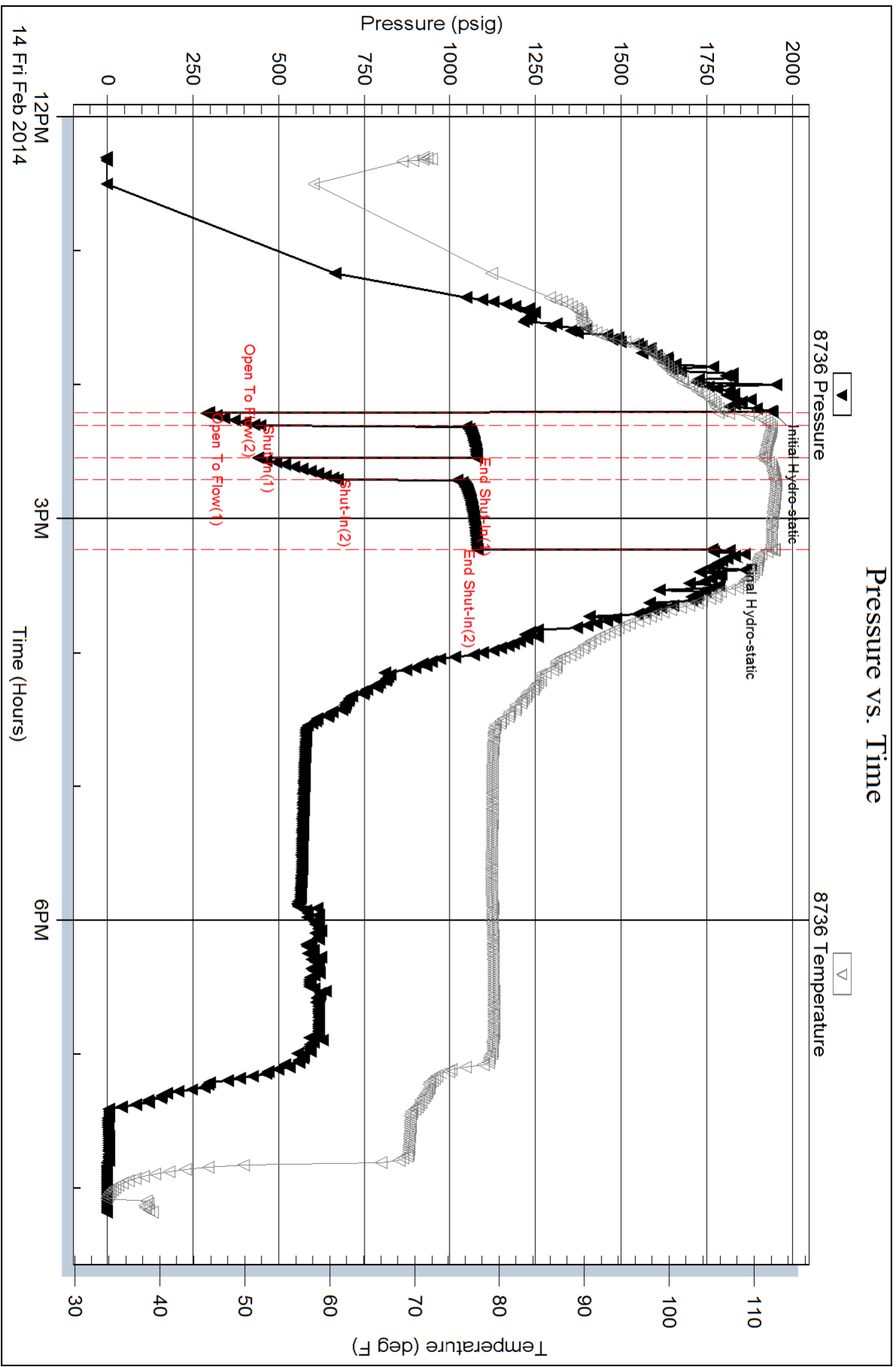
Num Gas Bombs: 0

Serial #:

Laboratory Name:

Laboratory Location:

Recovery Comments:



Serial #: 8018

Sandlin Oil Corp

Saab-Karlin #2

DST Test Number: 1

