

**TRILOBITE TESTING, INC.**

# DRILL STEM TEST REPORT

Anchor Bay Petroleum LLC  
 2713 Ash  
 Hays, KS 67601  
 ATTN: Ed Glassman

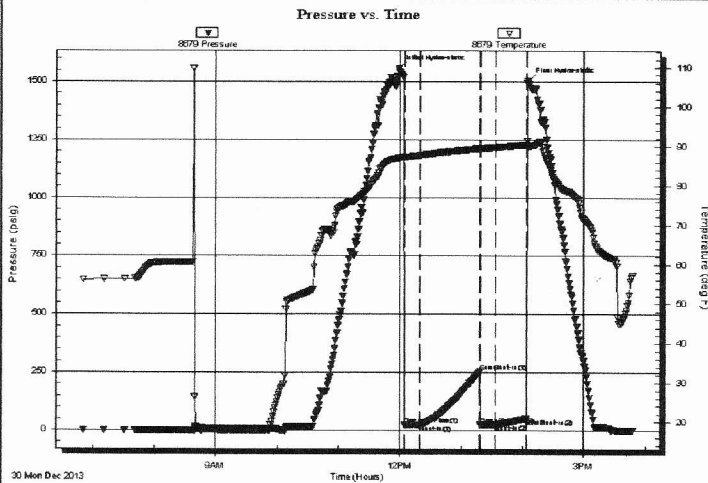
**1-11s-17w Ellis, KS**  
**Jane #1**  
 Job Ticket: 55442      **DST#: 1**  
 Test Start: 2013.12.30 @ 06:50:35

## GENERAL INFORMATION:

Formation: **Lansing A-E**  
 Deviated: No Whipstock: ft (KB)  
 Test Type: Conventional Bottom Hole (Initial)  
 Time Tool Opened: 12:04:28      Tester: Brannan L  
 Time Test Ended: 15:47:28      Unit No: 67  
 Interval: **3050.00 ft (KB) To 3140.00 ft (KB) (TVD)**      Reference Elevations: 1869.00 ft (KB)  
 Total Depth: 3140.00 ft (KB) (TVD)      1862.00 ft (CF)  
 Hole Diameter: 7.88 inches Hole Condition: Fair      KB to GR/CF: 7.00 ft

**Serial #: 8679      Inside**  
 Press@RunDepth: 26.72 psig @ 3136.00 ft (KB)      Capacity: 8000.00 psig  
 Start Date: 2013.12.30      End Date: 2013.12.30      Last Calib.: 2013.12.30  
 Start Time: 06:50:35      End Time: 15:47:28      Time On Btm: 2013.12.30 @ 11:58:58  
 Time Off Btm: 2013.12.30 @ 14:05:28

TEST COMMENT: 15- IF- Built to 3/4"  
 60- IS- No blow  
 15- FF- No blow  
 30- FS- No blow



## PRESSURE SUMMARY

Time (Min.)	Pressure (psig)	Temp (deg F)	Annotation
0	1557.56	87.05	Initial Hydro-static
6	24.37	87.05	Open To Flow (1)
21	25.17	87.70	Shut-In(1)
80	255.42	89.47	End Shut-In(1)
80	25.35	89.33	Open To Flow (2)
95	26.72	89.73	Shut-In(2)
125	51.79	90.40	End Shut-In(2)
127	1505.43	89.96	Final Hydro-static

## Recovery

Length (ft)	Description	Volume (bbl)
10.00	M w / oil spots	0.14

## Gas Rates

Choke (inches)	Pressure (psig)	Gas Rate (Mcf/d)



**TRILOBITE  
TESTING, INC.**

# DRILL STEM TEST REPORT

Anchor Bay Petroleum LLC

1-11s-17w Ellis, KS

2713 Ash  
Hays, KS 67601

Jane #1

Job Ticket: 55443

DST#: 2

ATTN: Ed Glassman

Test Start: 2013.12.31 @ 02:53:21

## GENERAL INFORMATION:

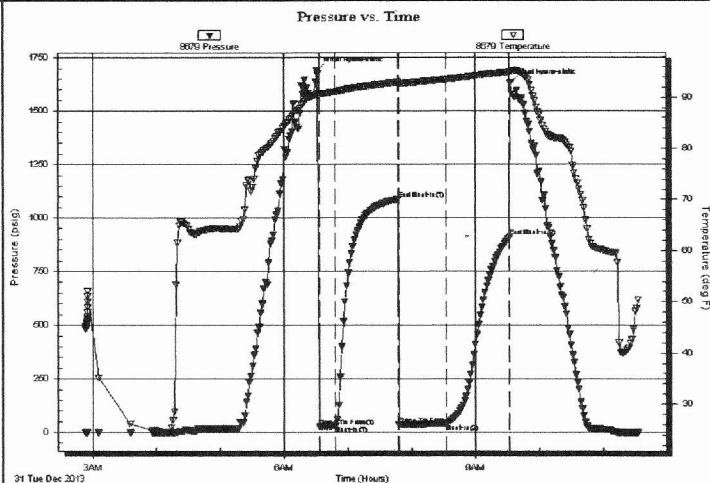
Formation: **KC**  
 Deviated: No Whipstock: ft (KB) Test Type: Conventional Bottom Hole (Reset)  
 Time Tool Opened: 06:33:21 Tester: Brannan L  
 Time Test Ended: 11:33:21 Unit No: 67  
 Interval: **3178.00 ft (KB) To 3296.00 ft (KB) (TVD)** Reference Elevations: 1869.00 ft (KB)  
 Total Depth: 3296.00 ft (KB) (TVD) 1862.00 ft (CF)  
 Hole Diameter: 7.88 inches Hole Condition: Fair KB to GR/CF: 7.00 ft

## Serial #: 8679

Inside

Press@RunDepth: 42.04 psig @ 3292.00 ft (KB) Capacity: 8000.00 psig  
 Start Date: 2013.12.31 End Date: 2013.12.31 Last Calib.: 2013.12.31  
 Start Time: 02:53:21 End Time: 11:33:21 Time On Btm: 2013.12.31 @ 06:31:21  
 Time Off Btm: 2013.12.31 @ 09:33:21

TEST COMMENT: 15- IF- Built slowly to 3.5"  
 60- IS- No blow  
 45- FF- Maintained 1" blow throughout  
 60- FS- No blow



## PRESSURE SUMMARY

Time (Min.)	Pressure (psig)	Temp (deg F)	Annotation
0	1690.04	90.72	Initial Hydro-static
2	26.40	90.32	Open To Flow (1)
17	30.45	91.06	Shut-In(1)
76	1087.67	92.95	End Shut-In(1)
77	35.73	92.33	Open To Flow (2)
122	42.04	93.57	Shut-In(2)
181	914.34	94.97	End Shut-In(2)
182	1631.32	95.13	Final Hydro-static

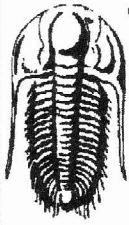
## Recovery

Length (ft)	Description	Volume (bbl)
50.00	M w / show of free oil on top	0.68

\* Recovery from multiple tests

## Gas Rates

	Choke (inches)	Pressure (psig)	Gas Rate (Mcf/d)



**TRILOBITE  
TESTING, INC.**

# DRILL STEM TEST REPORT

Anchor Bay Petroleum LLC

1-11s-17w Ellis, KS

2713 Ash  
Hays, KS 67601

Jane #1

Job Ticket: 55444

DST#: 3

ATTN: Ed Glassman

Test Start: 2013.12.31 @ 20:43:11

## GENERAL INFORMATION:

Formation: **Cong**

Deviated: No Whipstock: ft (KB)

Time Tool Opened: 01:50:41

Time Test Ended: 08:10:11

Test Type: Conventional Bottom Hole (Reset)

Tester: Brannan L

Unit No: 67

Interval: **3292.00 ft (KB) To 3365.00 ft (KB) (TVD)**

Total Depth: 3365.00 ft (KB) (TVD)

Hole Diameter: 7.88 inches Hole Condition: Fair

Reference Elevations: 1869.00 ft (KB)

1862.00 ft (CF)

KB to GR/CF: 7.00 ft

Serial #: 8679

Inside

Press@RunDepth: 21.69 psig @ 3361.00 ft (KB)

Start Date: 2013.12.31

End Date: 2014.01.01

Capacity: 8000.00 psig

Last Calib.: 2014.01.01

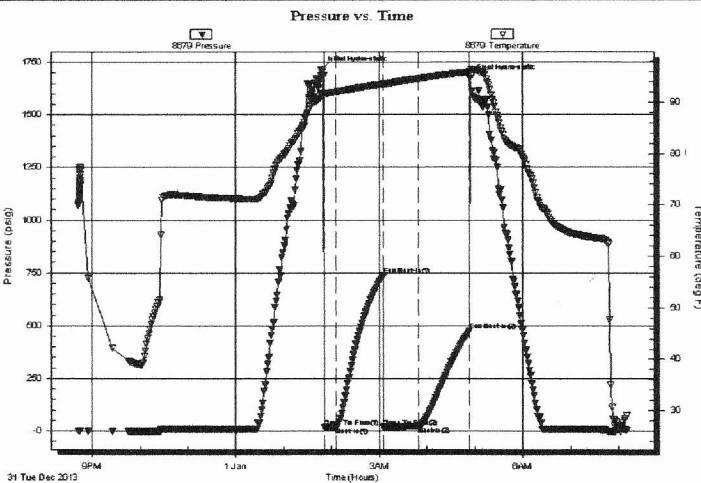
Start Time: 20:43:11

End Time: 08:10:11

Time On Btm: 2014.01.01 @ 01:47:41

Time Off Btm: 2014.01.01 @ 04:54:41

TEST COMMENT: 15- IF- Built to 1"  
60- IS- No blow  
45- FF- No blow  
60- FS- No blow



## PRESSURE SUMMARY

Time (Min.)	Pressure (psig)	Temp (deg F)	Annotation
0	1715.68	91.56	Initial Hydro-static
3	17.57	91.45	Open To Flow (1)
18	19.07	91.97	Shut-In(1)
77	738.04	93.56	End Shut-In(1)
78	19.85	93.30	Open To Flow (2)
122	21.69	94.62	Shut-In(2)
186	477.34	95.88	End Shut-In(2)
187	1674.04	95.87	Final Hydro-static

## Recovery

Length (ft)	Description	Volume (bbl)
10.00	M	0.14

\* Recovery from multiple tests

## Gas Rates

Choke (inches)	Pressure (psig)	Gas Rate (Mcf/d)



**TRILOBITE  
TESTING, INC.**

# DRILL STEM TEST REPORT

Anchor Bay Petroleum LLC

1-11s-17w Ellis, KS

2713 Ash  
Hays, KS 67601

**Jane #1**

ATTN: Ed Glassman

Job Ticket: 54777

**DST#: 4**

Test Start: 2014.01.01 @ 18:28:16

## GENERAL INFORMATION:

Formation: **Arbuckle**

Deviated: No Whipstock: ft (KB)

Time Tool Opened: 21:16:16

Time Test Ended: 03:35:46

Test Type: Conventional Bottom Hole (Reset)

Tester: Jeff Brown

Unit No: 67

**Interval: 3388.00 ft (KB) To 3455.00 ft (KB) (TVD)**

Total Depth: 3455.00 ft (KB) (TVD)

Hole Diameter: 7.88 inches Hole Condition: Fair

Reference Elevations: 1869.00 ft (KB)

1862.00 ft (CF)

KB to GR/CF: 7.00 ft

**Serial #: 6625 Outside**

Press@RunDepth: 192.11 psig @ 3451.00 ft (KB)

Start Date: 2014.01.01

End Date:

2014.01.02

Start Time: 18:28:16

End Time:

03:35:46

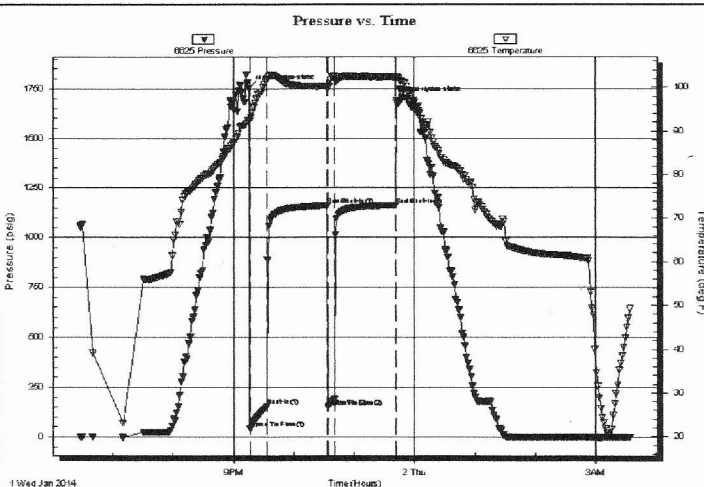
Capacity: 8000.00 psig

Last Calib.: 2014.01.02

Time On Btm: 2014.01.01 @ 21:15:46

Time Off Btm: 2014.01.01 @ 23:42:16

TEST COMMENT: IFP-15-min=Strong blow BOB in 5 min  
ISI-60-min=Dead no blow back  
FFP-10-min=Strong blow BOB in 5 min  
FSI-60-min=Dead no blow back



## PRESSURE SUMMARY

Time (Min.)	Pressure (psig)	Temp (deg F)	Annotation
0	1752.01	92.45	Initial Hydro-static
1	41.61	92.33	Open To Flow (1)
18	154.90	101.75	Shut-In(1)
78	1161.71	100.18	End Shut-In(1)
78	151.04	100.03	Open To Flow (2)
85	192.11	102.57	Shut-In(2)
146	1163.38	102.29	End Shut-In(2)
147	1693.12	102.41	Final Hydro-static

## Recovery

Length (ft)	Description	Volume (bbl)
315.00	WM 15%W 85%M	4.30
45.00	Mud with oil spots	0.61

\* Recovery from multiple tests

## Gas Rates

Choke (inches)	Pressure (psig)	Gas Rate (Mcf/d)