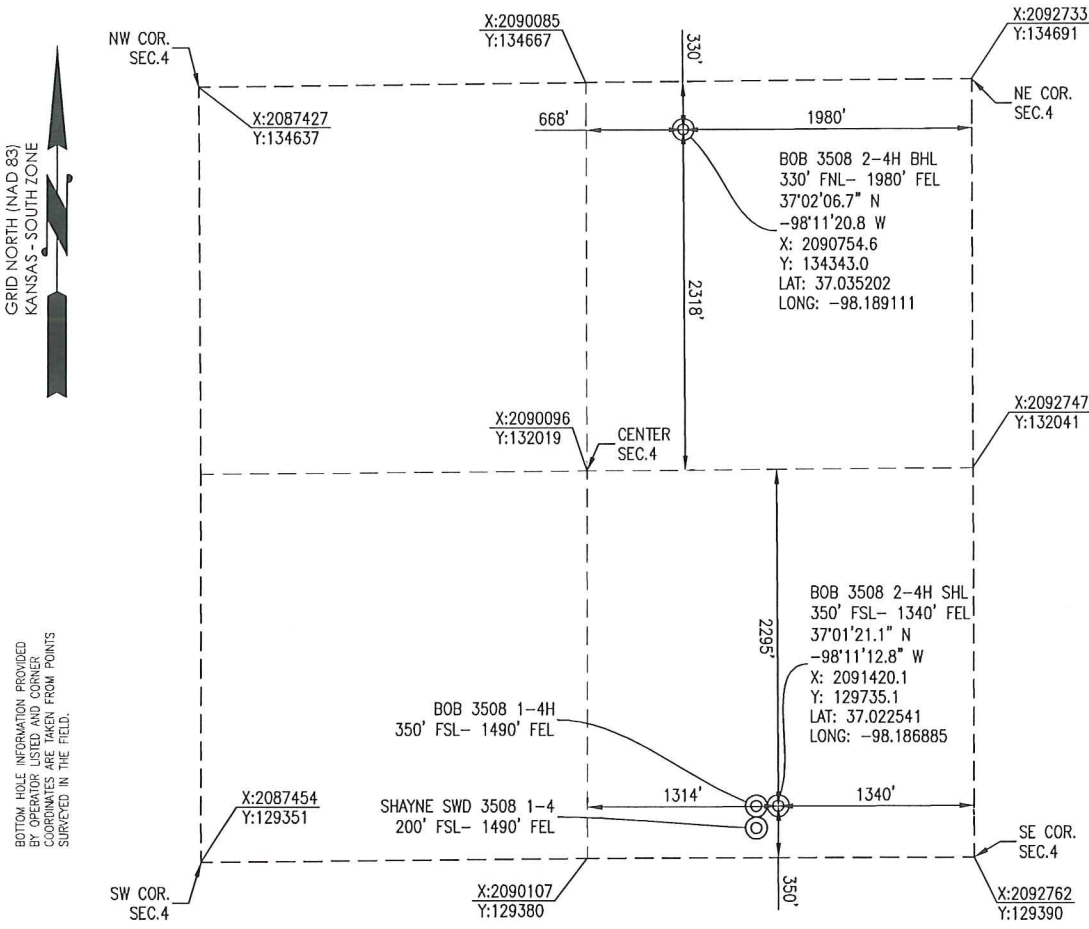


HARPER COUNTY, KANSAS  
 350' FSL- 1340' FEL SECTION 4 TOWNSHIP 35S RANGE 08W 6TH P.M.



OPERATOR: SANDRIDGE ENERGY, INC. WELL NO: 2-4H ELEVATION: 1274' GR. AT STAKE

LEASE NAME: BOB 3508 TOPOGRAPHIC & VEGETATION: LOCATION FELL IN A FIELD

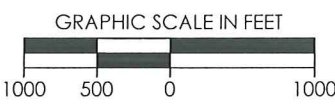
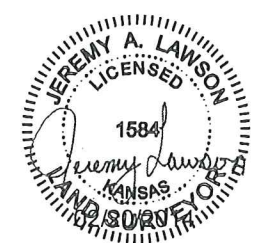
GOOD DRILL SITE: YES REFERENCE STAKES OR ALTERNATE LOCATION STAKES SET: NONE

BEST ACCESSIBILITY TO LOCATION: SOUTH OR EAST LINE

DISTANCE & DIRECTION FROM HWY JCT OR TOWN: FROM THE JCT. OF KS-2 & 80 AVE (±8.5 MILES WEST OF ANTHONY, KS) TRAVEL SOUTH ON 80 AVE/SW 80 AVE FOR ±9.0 MILES TO THE SOUTHEAST CORNER OF SECTION 4, T35S-R08W.

(THE FOLLOWING INFORMATION WAS GATHERED USING A GPS RECEIVER ACCURACY ±2.3 METERS) GPS DATUM: NAD-27 LAT: 37.022541 LONG: -98.186885 STATE PLANE COORDINATES: ZONE: KS-SOUTH NAD-27 X: 2091420.1 Y: 129735.1

GENERAL NOTES: THE TIES AND FOOTAGES SHOWN ON THIS PLAT ARE FROM LINES OF OCCUPATION FROM A SURVEY MADE ON THE GROUND AND / OR BEARING AND DISTANCES FROM THE GENERAL LAND OFFICE PLAT OF THE AREA SHOWN AND MAY NOT BE THE ACTUAL PROPERTY CORNERS. THIS PLAT DOES NOT REPRESENT A TRUE BOUNDARY SURVEY. DRILL SITE CONDITION DETERMINATIONS WERE MADE BY SANDRIDGE ENERGY INC. REPRESENTATIVES.



REVISION		<b>SandRidge</b>	
△	MOVED SHL (2-19-2014)	"BOB 3508 2-4H" PART OF THE SE1/4 OF SECTION 4, T-35-S, R-08-W PROPOSED DRILL SITE HARPER COUNTY, KANSAS	
SCALE: 1" = 1000'		DRAWN BY: MF SHEET NO.: 1 OF 4	
PLOT DATE: 02-20-2014			