



Scale 1:240 Imperial

Well Name: H-P Unit #1-22
 Surface Location: 2562' FNL _1223' FWL Sec 22-18S-14W
 Bottom Location:
 API:
 License Number:
 Spud Date: 2/5/2014 Time: 2:45 PM
 Region: Barton County
 Drilling Completed: 2/10/2014 Time: 2:15 PM
 Surface Coordinates: Y = 657129 & X = 1896263
 Bottom Hole Coordinates:
 Ground Elevation: 1966.00ft
 K.B. Elevation: 1929.00ft
 Logged Interval: 3000.00ft To: 3550.00ft
 Total Depth: 3550.00ft
 Formation: Arbuckle
 Drilling Fluid Type: Chemical/Fresh Water Gel

OPERATOR

Company: Shelby Resources, LLC
 Address: 445 Union Blvd, Suite 208
 Lakewood, CO 80228
 Contact Geologist: Janine Sturdavant
 Contact Phone Nbr: 303-907-2209 / 720-274-4682
 Well Name: H-P Unit #1-22
 Location: 2562' FNL _1223' FWL Sec 22-18S-14W API:
 Pool: Field: Wildcat
 State: Kansas Country: USA

LOGGED BY



Company: Shelby Resources, LLC
 Address: 445 UNION BLVD. Suite 208
 LAKEWOOD, CO. 80228
 Phone Nbr: 203-671-6034
 Logged By: Geologist Name: Jeremy Schwartz

NOTES

The Shelby Resources, LLC H-P Unit #1-22 was drilled to a total depth of 3550', bottoming in the Arbuckle. A TookeDaq gas detector was employed in the drilling of said well.

1 DST was conducted in the Lansing zone. The DST reports can be found at the bottom of this log.

Due to the DST results, sample shows, gas kicks, and log analysis it was determined by all parties involved to plug and abandon the well. The dry samples were saved and will be available for further review at the Kansas Geological Society Well Sample Library, located in Wichita, KS.

Respectfully Submitted,
Jeremy Schwartz
Geologist

SURFACE CO-ORDINATES

Well Type: Vertical
 Longitude: Latitude:

N/S Co-ord: Y = 657129
E/W Co-ord: X = 1896263

CONTRACTOR

Contractor: Sterling Drilling Co
Rig #: 5
Rig Type: mud rotary
Spud Date: 2/5/2014
TD Date: 2/10/2014
Rig Release:
Time: 2:45 PM
Time: 2:15 PM
Time:

ELEVATIONS

K.B. Elevation: 1929.00ft
K.B. to Ground: 13.00ft
Ground Elevation: 1966.00ft

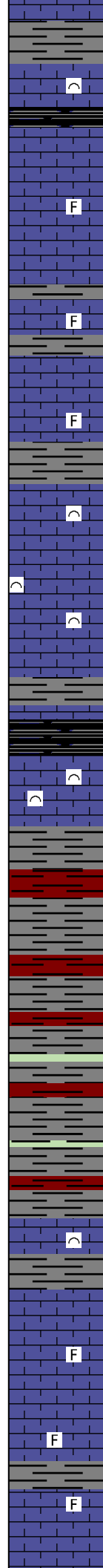
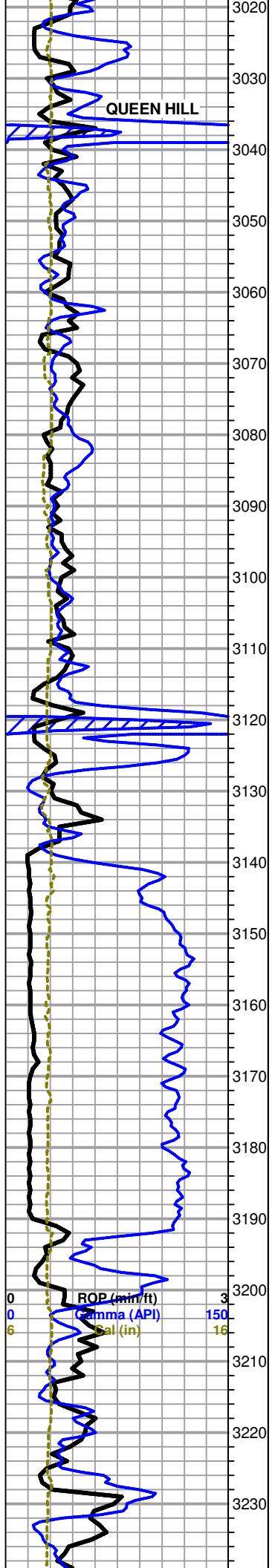
DATE	DEPTH	ACTIVITY
Saturday, February 08, 2014	3140'	Geologist Jeremy Schwartz on Location @ 2100hrs, DRLG ahead through Douglas Shale, Brown Lime, LKC, LKC "G",
Sunday, February 09, 2014	3347'	Muncie Creek, LKC "H", Short Trip, Strap Out, Drop Survey, Conduct DST #1 in LKC "H" DRLG ahead through LKC "J", Stark Shale, BKC, Conglomerate,
Monday, February 10, 2014	3475'	DRLG ahead through Arbuckle, lack of gas kicks, shows, and structural position do not warrant DST, DRLG ahead to TD, TD of 3550' reached @ 0515hrs,
	3550'	Conduct Logging Operations, Logging Operations complete @ 1330hrs
		Geologist Jeremy Schwartz off location @ 1415hrs

CLIENT:	SHELBY RESOURCES, LLC
WELL NAME:	H-P UNIT #1-22
LEGAL:	SE SE SW NW 22-18S-14W
COUNTY:	BARTON
API:	15-009-25944-00-00
DRLG CONTRACTOR:	STERLING DRILLING CO.
RIG #:	5
DOGHOUSE #:	620-388-5433
TOOLPUSHER:	ALAN LOFTIS
CELL #:	620-388-2736

		L.D. DRILLING				SHELBY RESOURCES, LLC				L.D. DRILLING												
		LORETTA POLZIN TRUST 1-22				W-S #1-15				F-B #1-21												
		H-P UNIT #1				SE SW NE SW 22-18S-14W				SW NE NE NE 21-18S-14W				SW NE NE NE 21-18S-14W								
		1929		1916		1942		1931		1929		1916		1942		1931						
		LOG TOPS		SAMPLE TOPS		COMP. CARD		LOG		SMPL.		COMP. CARD		LOG		SMPL.						
FORMATION	DEPTH	DATUM	DEPTH	DATUM	DEPTH	DATUM	CORR.	CORR.	DEPTH	DATUM	CORR.	CORR.	DEPTH	DATUM	CORR.	CORR.						
ANHYDRITE TOP	875	1054	875	1054	856	1060	-	6	-	6	886	1056	-	2	-	2	884	1047	+	7	+	7
BASE	900	1029	900	1029	882	1034	-	5	-	5	912	1030	-	1	-	1	908	1023	+	6	+	6
TOPEKA	2903	-974	2903	-974	2878	-962	-	12	-	12	2898	-956	-	18	-	18	2902	-971	-	3	-	3
HEEBNER SHALE	3118	-1189	3114	-1185	3092	-1176	-	13	-	9	3115	-1173	-	16	-	12	3116	-1185	-	4	+	0
TORONTO	3128	-1199	3124	-1195	3103	-1187	-	12	-	8	3123	-1181	-	18	-	14	3126	-1195	-	4	+	0
DOUGLAS SHALE	3140	-1211	3135	-1206	3114	-1198	-	13	-	8	3135	-1193	-	18	-	13	3139	-1208	-	3	+	2
BROWN LIME	3192	-1263	3190	-1261	3167	-1251	-	12	-	10	3188	-1246	-	17	-	15	3191	-1260	-	3	-	1
LKC	3202	-1273	3200	-1271	3176	-1260	-	13	-	11	3196	-1254	-	19	-	17	3202	-1271	-	2	+	0
LKC G	3273	-1344	3270	-1341	3249	-1333	-	11	-	8	3267	-1325	-	19	-	16	3271	-1340	-	4	-	1
MUNCIE CREEK	3338	-1409	3330	-1401	3310	-1394	-	15	-	7	3328	-1386	-	23	-	15	3328	-1397	-	12	-	4
LKCH	3340	-1411	3333	-1404	3313	-1397	-	14	-	7	3331	-1389	-	22	-	15	3331	-1400	-	11	-	4
LKCJ	3370	-1441	3368	-1439	3345	-1429	-	12	-	10	3363	-1421	-	20	-	18	3363	-1432	-	9	-	7
STARK SHALE	3388	-1459	3387	-1458	3363	-1447	-	12	-	11	3382	-1440	-	19	-	18	3378	-1447	-	12	-	11
BKC	3414	-1485	3408	-1479	3390	-1474	-	11	-	5	3416	-1474	-	11	-	5	3405	-1474	-	11	-	5
CONGLOMERATE	3420	-1491	3412	-1483	3395	-1479	-	12	-	4	3420	-1478	-	13	-	5	3409	-1478	-	13	-	5
ARBUCKLE	3469	-1540	3473	-1544	3424	-1508	-	32	-	36	3439	-1497	-	43	-	47	3444	-1513	-	27	-	31
RTD			3550	-1621	3550	-1634			+	13	3507	-1565				56	3550	-1619				2
LTD	3552	-1623			3549	-1633			+	10							3504	-1562				61

PROGNOSIS		
ANHYDRITE TOP	860	-1069
HEEBNER SHALE	3094	-1165
LANSING	3178	-1249
BKC	3390	-1461
ARBUCKLE	3442	-1513
RTD	3550	-1621

TESTED	TESTED	TESTED
	DST #1 (3315 - 3340) LKC "H" Times: 15-45-45-90 1ST OPEN BOB 1MIN BB BOB, GTS THROUGHOUT 2nd Open BOB 1MIN, GTS 1MIN BB BOB 2844' O, 120' OCM (50%/50%M) SIP: 1066 - 1064	DST #1 (3210 - 3258) LKC A-D TIMES: 30-30-30-30 1ST OPEN WEAK - DEAD 12MIN 2ND OPEN NO BLOW 15' OIL SPECKLED DRILLING MUD SIP: 887 - 648
	DST #2 (3347 - 3420) LKC "I-K" Times: 10-45-10 1st Open Very weak surface blow NO BB 2ND OPEN VERY WEAK SURGE DID NOT BUILD, PULLED TOOL	DST #2 (3252 - 3275) LKC D-G TIMES: 30-30-30-30 1ST OPEN WEAK 2ND OPEN VERY WEAK 200' SLM CW (5%M, 95%W) SIP: 953 - 947
		DST #3 (3322 - 3404) LKC H-L



As above, also with some scattered light brown, micro-xln, dense with poor visible porosity, trace black carbonaceous shale, no shows or odor

LS, light gray to cream, micro-xln, some fossiliferous, poor visible porosity, no shows or odor

As above, slightly chalky

LS, light gray to cream with some scattered light brown, fossiliferous, poor visible porosity, no shows or odor

LS as above

HEEBNER 3114 (-1185)

Shale, black carbonaceous

TORONTO 3124 (-1195)

LS, light gray to cream, micro-xln, fossiliferous, poor visible porosity, no shows or odor

DOUGLAS SHALE 3135 (-1206)

Shale, gray to red, mostly soft and waxy with some scattered blocky and dense

Shale, as above with trace green

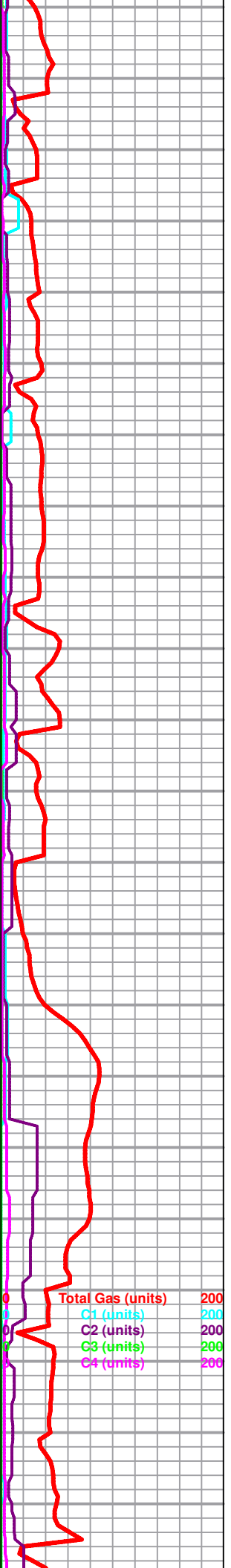
BROWN LIME 3190 (-1261)

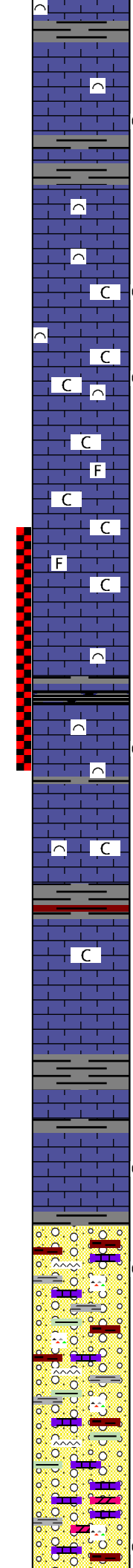
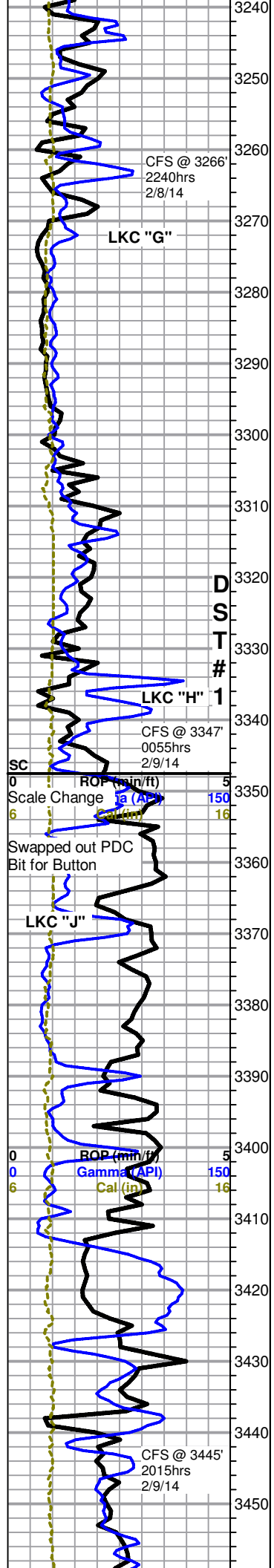
LS, brown, micro-xln, fossiliferous, hard and dense with no visible porosity, no shows or odor

LKC 3200 (-1271)

LS, cream with some scattered gray, micro-xln, some scattered fossiliferous, poor visible porosity, no shows or odor

LS, cream to gray with some scattered white, micro-xln, mostly dense with poor visible porosity, no shows or odor





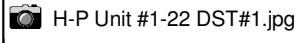
3266' 30" LS, cream to gray, micro-xln, fossiliferous, mostly dense with poor visible porosity, few chips with very scattered poor pinpoint porosity and trace black stain in porosity, pyritic, no odor

3266' 60" as above

LS, mostly cream with some gray, mostly fossiliferous and dense with poor visible porosity, with some very scattered oomoldic with poor oomold porosity, few chips with very scattered black stain in oomolds only, slightly chalky, poor fleeting odor

LS as above, with influx of oomoldic, poor oomold porosity and scattered brown to black stain in oomolds only, chalky, poor odor

LS, cream to gray with some scattered light brown, micro-xln, some fossiliferous, some scattered oomoldic, barren, hard and dense with poor visible porosity, very chalky, no odor



MUNCIE CREEK 3330 (-1401)

3347' 30" LS, gray to cream with some scattered brown, micro-xln, fossiliferous, hard and dense with poor to no visible porosity, also with few chips fossiliferous and dense with several small scattered edge vugs and tarry, wet black stain in vugs, slow streaming cut with dull yellow fluorescence, poor odor

3347' 60" Mostly same as above, found one small chip fossiliferous with slightly vuggy porosity and mostly saturated tarry, wet black stain in voids only, after several minutes under heat lamp few chips have SSFO and slight show gas bubbles coming from porosity, poor fleeting odor

3350' LS, gray to cream with some scattered white, micro-xln, mostly fossiliferous and dense with poor visible porosity, some scattered soft and chalky, slightly chalky sample, no shows or odor

LS, cream to gray, micro-crypto xln, some fossiliferous, some lithographic, dense with poor to no visible porosity, some scattered soft and chalky, slightly chalky sample, no shows or odor

STARK SHALE 3387 (-1458)

LS, cream to white with some scattered light gray, micro-xln, some fossiliferous, some lithographic, dense with poor visible porosity, some very scattered with slightly re-crystallized edges, few chips with spotty dead black to tarry, wet black stain on edges only, no cut, no odor

BKC 3408 (-1479)

Mixed cream to gray LS, some fossiliferous, some scattered oomoldic, mostly hard and dense with poor visible porosity, few chips with very scattered edge vugs and poor dark brown to wet black stain in vugs only, also with mixed gray and red shale and very scattered orange and red chert, slight red wash

3445' 30" Mixed cream to gray LS with some scattered white, some fossiliferous, dense with poor visible porosity, also with mixed gray and red shale with trace green and scattered mixed vari-colored cherts, heavy red wash

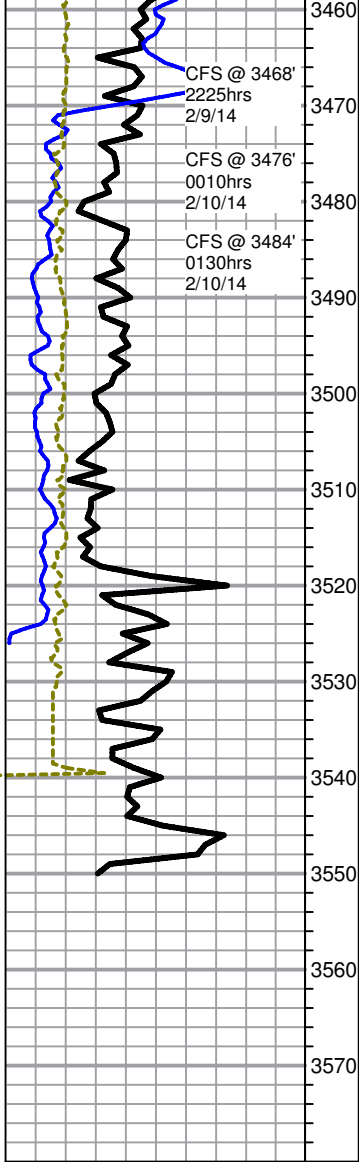
60" As above

3468' 30" Conglomerate as above, very chalky, red wash, also with trace dolomite, white, hard and dense with no visible porosity, barren, found one chip sub-sucrosic with fair development and scattered pinpoint to slightly vuggy porosity and very scattered brown to black stain, slow streaming cut with dull

Survey @ 3347' = 1degree

Mud-Co	Mud chk
3347'	
2/9/14	
Vis:	52
Wt.:	9.2
PV:	16
YP:	14
WL:	8.0
Cake	1/32
pH:	10.0
Ca:	20ppm
CHL:	4,200ppm
Sol:	6.1
LCM:	0
DMC:	\$1,764.95
CMC:	\$7,080.40

Total Gas (units)	200
C1 (units)	200
C2 (units)	200
C3 (units)	200
C4 (units)	200



fluorescence

60" Conglomerate with some scattered dolomite, white, micro-xln, few chips sub-sucrosic, mostly hard and dense with poor development and porosity, barren, very chalky, red wash

ARBUCKLE 3473 (-1544)

3476' 30" Conglomerate with influx of dolomite, white, micro-xln, some sub-sucrosic, mostly dense with poor visible porosity, barren

60" Dolomite, white, micro-xln, some hard and dense, some sub-sucrosic with poor to fair development, some chips friable, barren, also with abundant mixed LS, shales and cherts with slight red wash

3484' 30" Dolomite, white, micro-xln, some with poor to fair development and poor visible porosity, some friable, some dense, few chips with very scattered black gilsonitic stain, also with some scattered gray and red shale and trace orange to red chert, slightly chalky sample

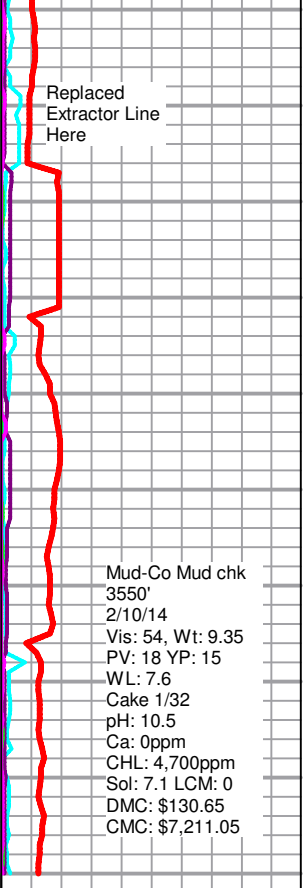
60" Dolomite as above, barren, with less shales and cherts

Dolomite, white, micro-xln, sub-sucrosic with some scattered sucrosic, mostly poorly developed with few chips showing scattered fair sub-rhombic development, some very friable, some dense, poor visible porosity, very scattered black gilsonitic stain on several chips, slightly chalky

Dolomite as above, few chips with fair sub-rhombic development, very friable with poor to fair visible inter-xln porosity on few chips, some with very scattered black gilsonitic stain, slightly chalky

As above

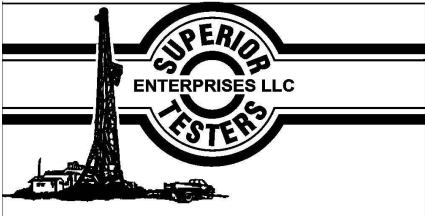
Dolomite, white, micro-xln, mostly sub-sucrosic with some scattered sucrosic, poor to fair sub-rhombic development with few chips showing poor to fair rhombic development, poor visible porosity, slightly chalky, no shows



Replaced Extractor Line Here

Mud-Co Mud chk
3550'
2/10/14
Vis: 54, Wt: 9.35
PV: 18 YP: 15
WL: 7.6
Cake 1/32
pH: 10.5
Ca: 0ppm
CHL: 4,700ppm
Sol: 7.1 LCM: 0
DMC: \$130.65
CMC: \$7,211.05

Rotary TD 3550' @ 0515hrs 2/10/14
Nabors Well Services Logging TD @ 3552'
Complete Logging Operations @ 1330hrs 2/10/14
Geologist Jeremy Schwartz off location @ 1415hrs 2/10/14



DRILL STEM TEST REPORT

Shelby Resources LLC
 2717 Canal Boulevard
 Suite C
 Hays, Kansas 67601
 ATTN: Jeremy Schw artz

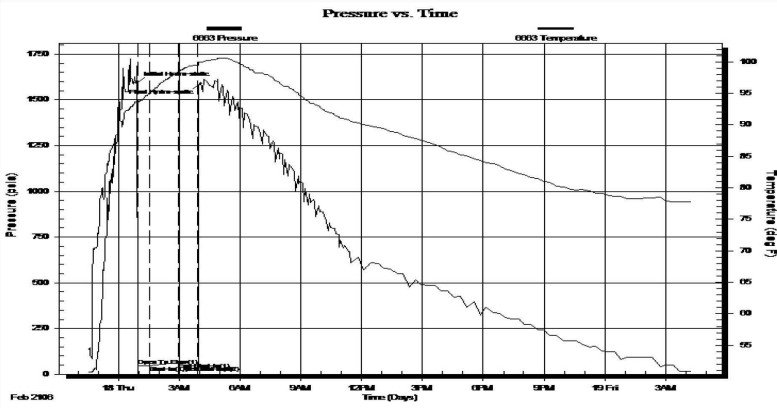
22/18S/14W/Barton
H-P Unit 1-22
 Job Ticket: 18239 **DST#: 1**
 Test Start: 2014.02.09 @ 07:25:00

GENERAL INFORMATION:

Formation: **Lansing/Kansas City**
 Deviated: No Whipstock: ft (KB)
 Test Type: Conventional Bottom Hole (Initial)
 Time Tool Opened: 00:57:00 Tester: Ken Sw inney
 Time Test Ended: 10:17:00 Unit No: 3325 Great Bend/22
Interval: 3313.00 ft (KB) To 3347.00 ft (KB) (TVD)
 Reference Elevations: 1929.00 ft (KB)
 Total Depth: 3347.00 ft (KB) (TVD) 1916.00 ft (CF)
 Hole Diameter: 7.80 inches Hole Condition: Poor KB to GR/CF: 13.00 ft

Serial #: 6663 Inside
 Press@RunDepth: 46.60 psia @ 3343.00 ft (KB) Capacity: 5000.00 psia
 Start Date: 2014.02.09 End Date: 2106.02.19 Last Calib.: 2014.02.09
 Start Time: 07:25:00 End Time: 10:17:00 Time On Btm: 2106.02.18 @ 00:53:00
 Time Off Btm: 2106.02.18 @ 04:05:00

TEST COMMENT: 1ST Open 15 Minutes/Weak blow /Blow built to 1 inch in bucket of diesel
 1ST Shut In 45 Minutes/No blow back
 2ND Open 10 Minutes/Couple of bubbles at open then dead/Pull test



PRESSURE SUMMARY			
Time (Min.)	Pressure (psia)	Temp (deg F)	Annotation
0	1662.30	93.72	Initial Hydro-static
4	44.59	93.47	Open To Flow (1)
40	46.60	95.10	Shut-In(1)
124	62.31	98.41	End Shut-In(1)
128	46.45	98.53	Open To Flow (2)
180	47.17	99.47	Shut-In(2)
192	1589.83	99.94	Final Hydro-static

Recovery		
Length (ft)	Description	Volume (bbl)
3.00	Mud 100%	0.01

Gas Rates			
	Choke (inches)	Pressure (psia)	Gas Rate (Mcf/d)