

W45" set
316943-3511
Gen set



DRILL STEM TEST REPORT

Prepared For: **Shelby Resources LLC**

2717 Canal Boulevard
Suite C
Hays, Kansas 67601

ATTN: Jeremy Schwartz

H-P Unit 1-22

22/18S/14W/Barton

Start Date: 2014.02.09 @ 07:25:00

End Date: 2106.02.19 @ 10:17:00

Job Ticket #: 18239 DST #: 1

Superior Testers Enterprises LLC
PO Box 138 Great Bend KS 67530
1-800-792-6902

Printed: 2014.02.09 @ 18:42:22

Shelby Resources LLC 22/18S/14W/Barton H-P Unit 1-22 DST # 1 Lansing/Kansas City 2014.02.09

Serial #: 6663

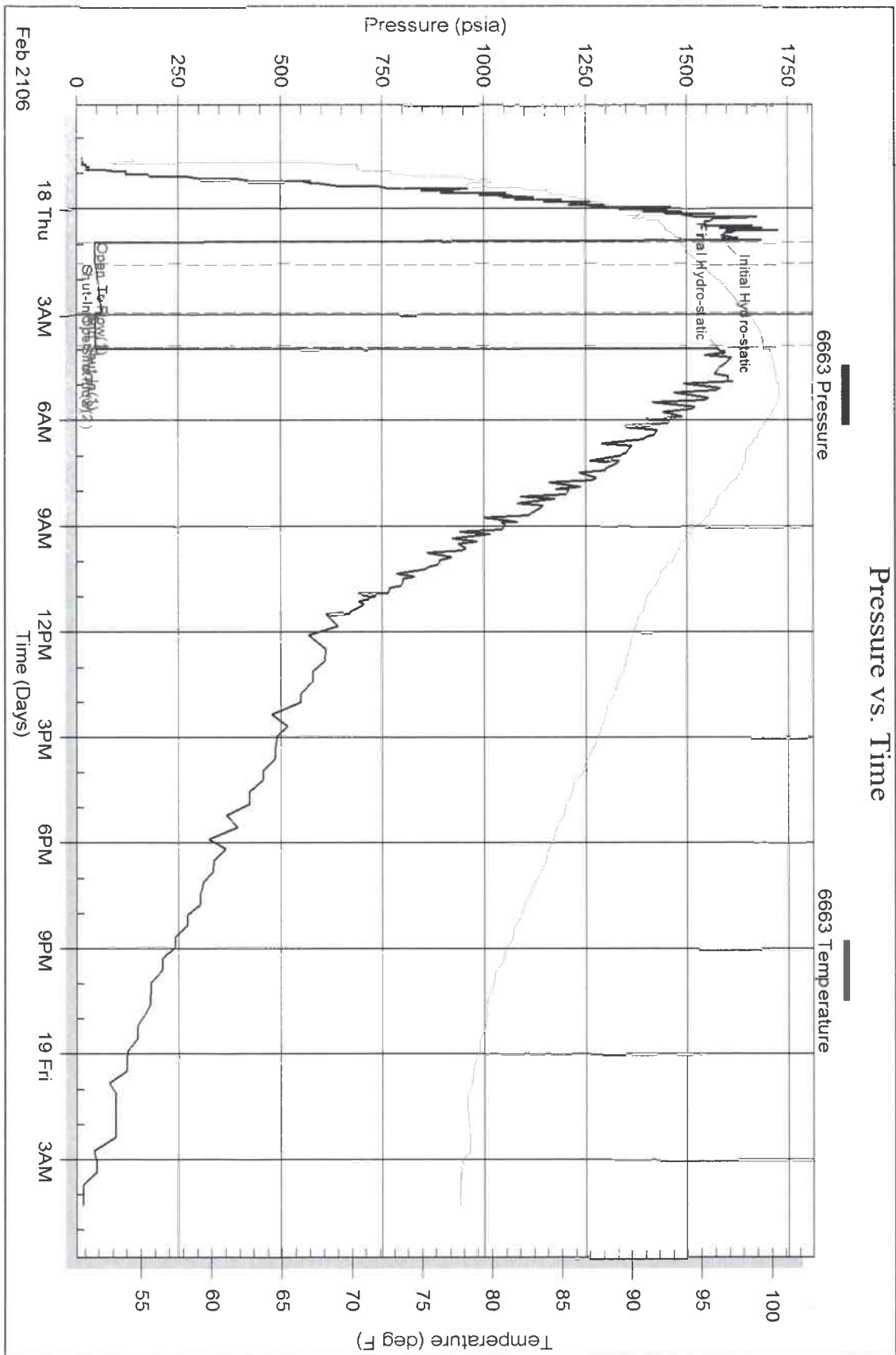
Inside

Shelby Resources LLC

HP Unit 1-22

DST Test Number 1

Pressure vs. Time



Superior Testers Enterprises LLC

Ref. No: 18239

Printed: 2014.02.09 @ 18:42:22