

AUSTIN B. KLAUS



Cell 785.650.3629
Work 785.483.3145
Ext 225

PO BOX 352
Russell, KS 67665
austin.klaus@johnofarmer.com

Scale 1:240 (5"=100') Imperial
Measured Depth Log

Well Name: Johnson C #1
Location: Phillips County
License Number: API #15-147-20725-0000
Spud Date: 10/29/13
Surface Coordinates: Section 27 - Township 1 South - Range 18 West
2,060' FSL & 1,190' FEL
Bottom Hole Coordinates: Vertical well with minimal deviation, same as above
Ground Elevation (ft): 2,145' **K.B. Elevation (ft):** 2,153'
Logged Interval (ft): 3,000' **To:** RTD **Total Depth (ft):** 3,650'
Formation: Topeka-Lansing
Type of Drilling Fluid: Chemical (Mud Co.)

Region: Kansas
Drilling Completed: 11/3/13

Printed by STRIP.LOG from WellSight Systems 1-800-447-1534 www.WellSight.com

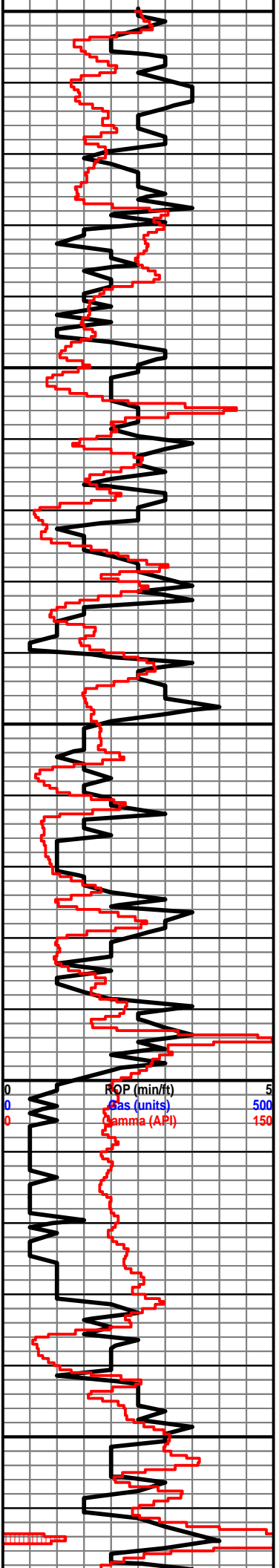
OPERATOR

Company: John O. Farmer, Inc.
Address: P.O. Box 352
Russell, KS 67665-0352

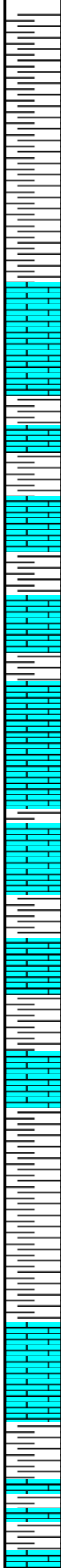
Comments

The Johnson C #1 well was drilled by WW Rig #12 (Tool Pusher: Calvin Pfannenstiel).

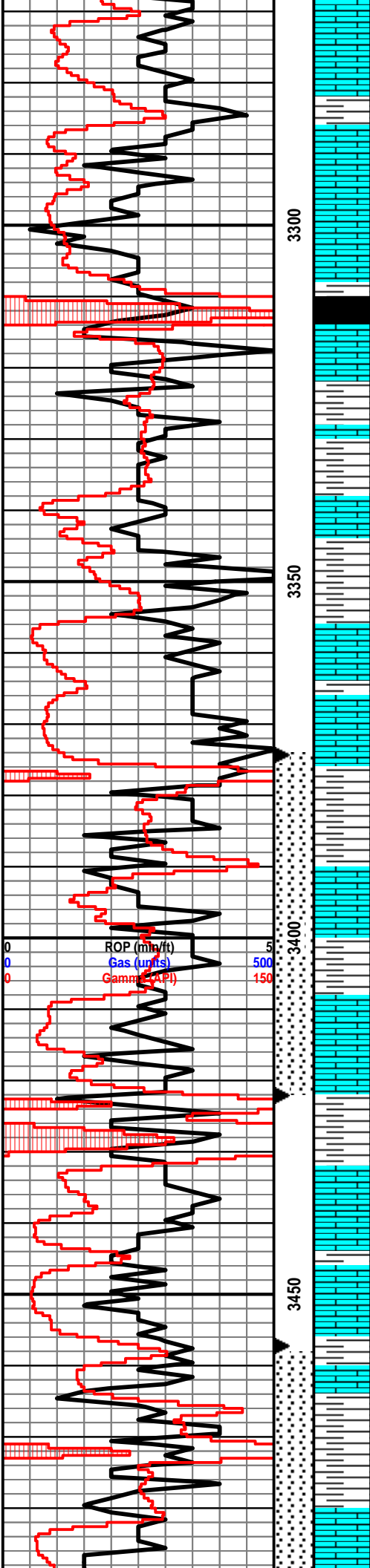
The location for the Johnson C #1 well was found via 3-D seismic survey. Structurally, this well ran 2' low to our nearby producing well (Johnson B #1). Geologic samples were collected and examined from 3,050'-3,650'. Upon examination of rock samples in the Lansing C & D zones it was decided a bottom-hole test be conducted; this test yielded negative results. A second bottom-hole test was conducted to evaluate zones in the lower Lansing, this test also yielded negative results. After all sample, log, and drill stem test data was gathered and evaluated, the decision was made to plug and abandon the Johnson C #1 well on 11/4/13.



3050
3100
3150
3200
3250



Sh: lt-drk gry-brn, rd, scat pyrite
 Ls: lt-drk gry, fn-sub xln, mostly DNS, scat pyrite, scat chert-off wh
 Sh: lt-drk gry, vry soft
 Sh: ala
 Sh: gry-brn-rd, vry soft, scat chert-off wh
Topeka 3094' (-943)
 Ls: lt gry-tan, fn-sub xln, mostly DNS, scat chert-off wh
 Ls: ala
 Ls: lt gry-tan-brn, fn xln, vry poor int xln porosity, NSFO, no odor, scat chert-off wh
 Sh: lt-drk gry-blk, few pcs vry soft
 Ls: off wh-lt gry, fn-sub xln, mostly DNS, NSFO, scat chert-off wh, sl chalky, fossil
 Ls: lt gry-tan, fn xln, scat int xln porosity, NSFO, vry chalky, scat sltst
 Ls: ala
 Ls: off wh-tan-lt gry, fn xln, vry poor int xln porosity, NSFO, vry chalky, sl fossil, chert-off wh
 Ls: ala
 Ls: tan-gry, fn-sub xln, mostly DNS, sl chert-off wh
 Sh: lt-drk gry, soft
 Sh: lt gry-brn-rd, vry soft, scat sltst
 Ls: off wh-tan, fn xln, sl fossil, scat int fossil porosity, NSFO, sl chert-off wh, vry chalky
 Ls: ala
 Sh: drk gry-brn, few pcs soft
 Ls: tan-gry, fn-sub xln, mostly DNS, NSFO, fossil,



sl chalky

Ls: ala

Ls: tan-gry, fn-sub xln, DNS, sl fossil, sl chalky

Ls: off wh-lt gry, fn-sub xln, mostly DNS, sl chert-off wh, chalky

Heebner 3311' (-1160)

Sh: blk, carb, fissile

Ls: tan-lt gry, fn-sub xln, mostly DNS, sl chert-off wh, sl chalky, scat sh-drk gry

Ls: ala

Sh: gry-brn-rd, vry soft

Toronto 3339' (-1188)

Ls: off wh-tan-lt gry, fn-sub xln, vry poor int xln porosity, NSFO, no odor, sl chert-off wh, chalky

Sh: lt-drk gry

Lansing 3358' (-1207)

Ls: off wh-lt gry, fn-sub xln, vry DNS, chert-off wh, fossil

Ls: ala, chalky

Sh: drk gry-brn-rd, few pcs vry soft

Sh: lt-drk gry-brn-grn, soft

Ls: off wh-tan, fn-sub xln, vry poor int xln & scat pp vuggy porosity, fair oil st in cup, SSFO, sl-fair odor, vry hvly chert-off wh

Sh: drk gry-brn, vry soft

Ls: off wh-tan-brn, fn-vry fn xln, poor int xln porosity, fair-good oil sat, FSFO, fair-good odor, sl chalky

Sh: drk gry-brn-grn

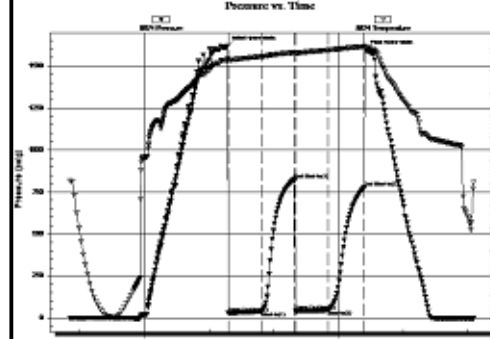
Ls: off wh-tan, fn xln, mostly DNS, vry poor int xln porosity, NSFO, no odor, vry chalky, sl chert-off wh, sl fossil

Ls: off wh-tan-lt gry, fn-sub xln, poor int xln porosity, NSFO, chalky, sl chert-off wh

Sh: drk gry-blk

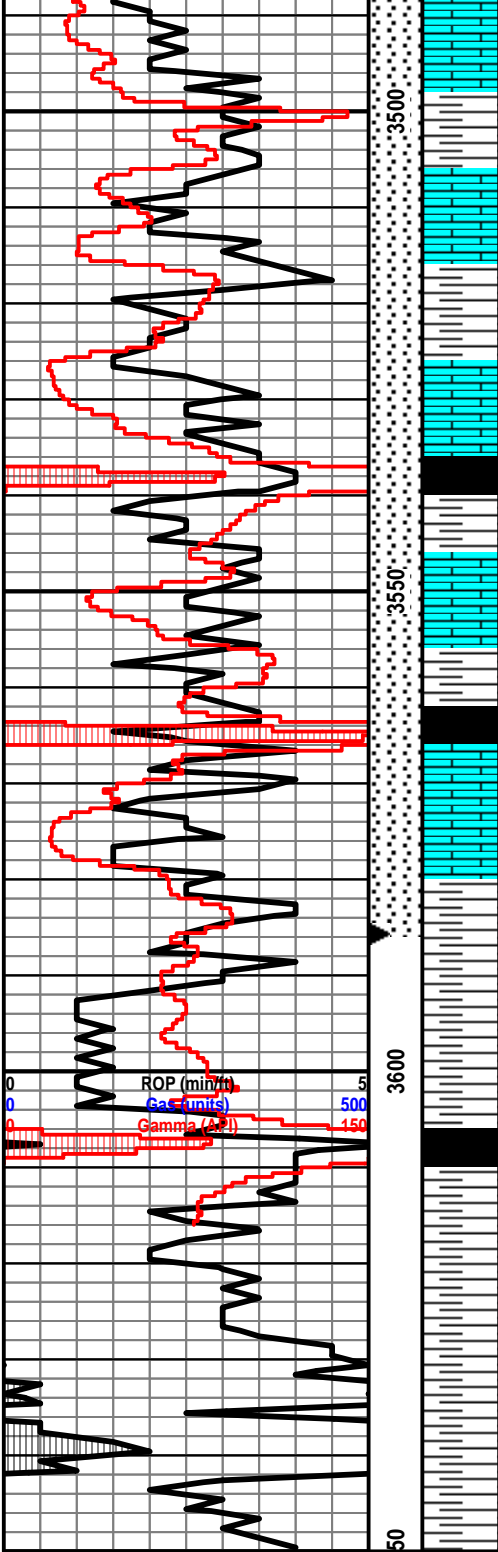
Ls: off wh-lt gry, fn-sub xln, mostly DNS, NSFO, vry chalky, sl fossil

DST #1 3,374'-3,422' (LKC C&D zones)
 30"-30"-30"-30"
 IF: 1/4" blow, died in 2 min, no blow back
 FF: No blow, no blow back
 Rec: 10' OCM (2% O, 98% M)
 FP: 28-38#, 40-45#
 SIP: 825-775#
 HP: 1,617-1,595#
 BHT: 95



DST #2 3,457'-3,585' (LKC H-L zones)
 30"-30"-60"-60"
 IF: 1/4" blow built to BOB in 24 min, no blow back
 FF: 1/4" blow built to BOB in 32 min, no blow back
 Rec: 30' Free Oil (34 degree API), 30' MW (15% M, 85% W), 120' MW (5% M, 95% W) Chl 42,000 ppm
 FP: 67-137#, 144-213#
 SIP: 1.133-1.121#

HP: 1,720-1,692#
BHT: 98



Ls: tan-lt gry, fn-sub xln, vry DNS, chalky, hvy chert-off wh, sl fossil

Sh: lt-drk gry

Ls: tan-lt gry, fn xln, poor int xln porosity, vry lt oil st, VSSFO, sl-fair odor, hvy chert-off wh, sl chalky

Sh: drk gry-brn, few pcs soft

Ls: lt gry-tan-brn, fn-sub xln, mostly DNS, NSFO, no odor, hvy chert-off wh, sl fossil

Sh: lt-drk gry-brn-grn, soft

Ls: off wh-lt gry, fn xln, poor int xln porosity, vry lt oil st, VSSFO, sl odor, hvy chert-off wh, vry chalky

Sh: drk gry-brn-grn, soft

Ls: off wh-tan-lt gry, fn xln, poor int xln porosity, VSSFO, sl odor, vry chalky, sl fossil

B/KC 3581' (-1430)

Sh: lt-drk gry-brn-grn

Sh: drk gry-brn-red

Sh: lt-drk gry-brn-grn, vry soft

Sh: drk gry-brn, vry soft

Sh: ala

Sh: drk gry-brn-grn, vry soft

Sh: ala

