

M. Bradford Rine

Consulting Geologist, Licensed and Certified

Scale 1:240 (5"=100') Imperial
Measured Depth Log

Well Name: Parker Unit #1 - Venture Resources, Inc.
Location: SE-SW-SW-NW, Section 01-11S-18W
License Number: API: 15-051-26646-00-00
Spud Date: December 12, 2013
Surface Coordinates: 430' FWL & 2642' FSL,
of Section
Bottom Hole Vertical Wellbore
Coordinates: Vertical Wellbore
Ground Elevation (ft): 1989 Ft. K.B. Elevation (ft): 1994 Ft.
Logged Interval (ft): 2800 Ft. To: 3531 Ft. Total Depth (ft): RTD 3531 Ft. LTD 3530 Ft.
Formation: Arbuckle at Total Depth
Type of Drilling Fluid: Chemical

Region: Ellis County, Kansas
Drilling Completed: December 20, 2013
Field: Bemis-Shutts
Production Casing Set

Printed by MUD.LOG from WellSight Systems 1-800-447-1534 www.WellSight.com

Operator

Company: Venture Resources, Inc.
Address: 2255 South Wadsworth, Suite #205
Lakewood, Colorado 80227

Geologist

Name: M. Bradford Rine
Company: Consulting Geologist, Kansas Lic. #204, Wyo #189, AAPG Cert. #2647
Address: 100 South Main, Suite #415
Wichita, Kansas 67202

Remarks

Based on sample observations, drill stem test results, and electric log evaluation, it was the decision of the Operator, to set production casing on the "Parker Unit #1", on December 20, 2013.

Respectfully submitted,
M. Bradford Rine, Geologist



	Venture Resources, Inc.			Venture (Well A)		Bankoff (Well B)			
	Parker Unit #1			Parker #4		#3 Ridler (D&A 59')			
	SE-SW-SW-NW			NE-SW-SE-NW		App S2-NW-SW			
	Sec. 01-11S-18W			Sec. 01-11S-18W		Sec. 01-11S-18W			
	KB 1994 Ft.			KB 1917 Ft.		RB 2045 Ft.		Well A	Well B
Formations	Sample	E-Log	Datum	E-Log	Datum	E-Log	Datum	Comparison(s)	
Anhydrite	1270	1273	721	1190	727	1330	715	-6	6
B/Anhydrite	1311	1307	687	1224	693	1363	682	-6	5
Topeka	2955	2956	-962	2871	-954	3021	-976	-8	14
Heebner Sh	3176	3176	-1182	3091	-1174	3242	-1197	-8	15
Toronto	3200	3197	-1203	3118	-1201	3261	-1216	-2	13
Lansing	3220	3218	-1224	3135	-1218	3282	-1237	-6	13
Muncie Creek Sh	3343	3343	-1349	3261	-1344	3408	-1363	-5	14
Stark Sh	3406	3404	-1410	3324	-1407	3470	-1425	-3	15
B/Kansas City	3446	3443	-1449	3362	-1445	3509	-1464	-4	15
Arbuckle	3526	3525	-1531	3453	-1536	3595	-1550	5	19
Total Depth	3531	3530	-1536	3665	-1748	3645	-1600	212	64

Drilling Information

Rig: American Eagle Rig #3
Pump: Emsco D-375 6x14
Drawworks: Emsco GB 260
Collars: 523' 2-1/4 x 6-1/4
Drillpipe: 4-1/2" XH
Toolpusher: Derby Keever

Mud: Mudco (Gary Schmidtberger)

Gas Detector: None

Drill Stem Tests:

Logs:

Water: VRI Water Well (Bemis Fresh Water Well)

Company Representatives:

Office: Todd Smith

Field: John Cearley

Daily Drilling Status

Date:	Operations/Depth/Comments
12-10-13	MIRT, RU @ 0'
12-11-13	RU @ 0'
12-12-13	Spud 4:00 AM, Drilling @ 69'
12-13-13	DFR/Trash Pump @ 610'
12-14-13	CTCH @ 1280'
12-15-13	Drilling @ 1614'
12-16-13	Drilling @ 2376'
12-17-13	Drilling @ 2803'
12-18-13	Drilling @ 3261'
12-19-13	Drilling @ 3510'
12-20-13	Trip to Bottom/bit after logging @ 3531'

Casing Record, Bit Record, Deviation Surveys

CASING:

Conductor:

Surface:

Ran 30 jts 8-5/8" 23# new, set @ 1279 ft. (Swift) Cement with 425 sx SMD. Cement did circulate. Plug down @ 8:30 a.m. 12-14-13.

Production:

BITS:

No.	Size	Make	Model	Depth In	Depth Out	Hours
1	12-1/4	Smith	RR	0	99	1-3/4
2	12-1/4	Smith	RR	99	1280	22-1/2
3	7-7/8	JZ	HA25L	1280	3531	75-1/2

DEVIATION SURVEYS:

Deviation:	Depth:	Deviation:	Depth:
1.00*	726'	1.50*	3531'
0.50*	1280'		

DST #1: 3444-3531 (Arbuckle)

Times: 30-45-30-45

Initial Open: Stg, b.o.b. 1.5 min, wk surface return blow

Final Open: Stg, b.o.b. 3 min, wk surface return blow

Rec: 1260' Total Fluid

315' GWMCO: 30%g 50%o 10%w 10%m

63' SGOCM: 05%g 05%o 90%m

378' GOCM: 20%g 30%o 50%m

441' GMCO: 20%g 65%o 15%m

63' SMCO: 90%o 10%m

(Fluid Sampler: Pr 250#, 1800 ml oil, 100 ml mud, 100 ml water)

IHP: 1776 FHP: 1706

IFP: 117-441 FFP: 432-609

ISIP: 873 FSIP: 813

BHT: 109°F



TRILOBITE TESTING, INC.

DRILL STEM TEST REPORT

Venture Resources Inc

1-11s-18w

2255 S Wadsworth STE 205
Lakewood Co 80227

Packer Unit # 1

ATTN: Brad Rine

Job Ticket: 54776

DST#: 1

Test Start: 2013.12.19 @ 13:43:30

GENERAL INFORMATION:

Formation: **Arbuckle**

Deviated: No Whipstock: ft (KB)

Time Tool Opened: 15:57:00

Time Test Ended: 22:48:30

Test Type: Conventional Bottom Hole (Initial)

Tester: Jeff Brown

Unit No: 67

Interval: **3444.00 ft (KB) To 3531.00 ft (KB) (TVD)**

Total Depth: 3531.00 ft (KB) (TVD)

Hole Diameter: 7.88 inches Hole Condition: Good

Reference Elevations: 1994.00 ft (KB)

1989.00 ft (CF)

KB to GR/CF: 5.00 ft

Serial #: 8679

Inside

Press@RunDepth: 608.52 psig @ 3512.00 ft (KB)

Start Date: 2013.12.19

End Date:

2013.12.19

Capacity: 8000.00 psig

Start Time: 13:43:31

End Time:

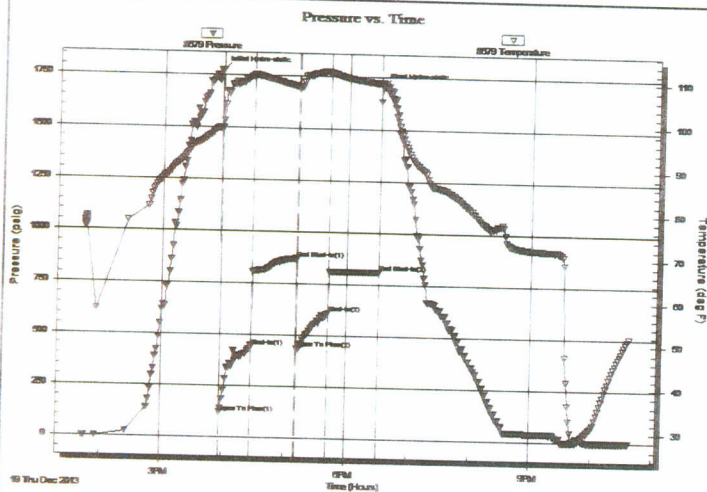
22:37:30

Last Calib.: 2013.12.19

Time On Btm: 2013.12.19 @ 15:56:30

Time Off Btm: 2013.12.19 @ 18:31:30

TEST COMMENT: IFP=Strong blow BOB in 1-3/4 min
IS=Weak surface blow back
FFP=Strong blow BOB in 3 min
FSI=Weak surface blow back



PRESSURE SUMMARY

Time (Min.)	Pressure (psig)	Temp (deg F)	Annotation
0	1775.56	98.99	Initial Hydro-static
1	117.36	98.69	Open To Flow (1)
31	440.60	110.84	Shut-in(1)
75	873.34	108.50	End Shut-in(1)
75	432.01	108.25	Open To Flow (2)
105	608.52	111.72	Shut-in(2)
154	812.54	109.37	End Shut-in(2)
155	1706.13	109.50	Final Hydro-static

Recovery

Length (ft)	Description	Volume (bbl)
315.00	MCGWO 30%G 10%W 10%M 50%O	4.15
63.00	SGOCM 5%G 5%O 90%M	0.88
378.00	HOCGM 20%G 30%O 50%M	5.30
441.00	MCGO 15%M 20%G 65%O	6.19
63.00	MO 10%M 90%O	0.88

Gas Rates

Choke (inches)	Pressure (psig)	Gas Rate (Mcf/d)

Rock Types

Anhy	Black shale	Lmst	Shcol	Sitysh
Bent	Congl	Meta	Shgy	Shlysiltst
Brec	Dol	Mrlst	Sltst	Sandyls
Cht	Gyp	Salt	Ss	
Clyst	Igne	Shale	Till	

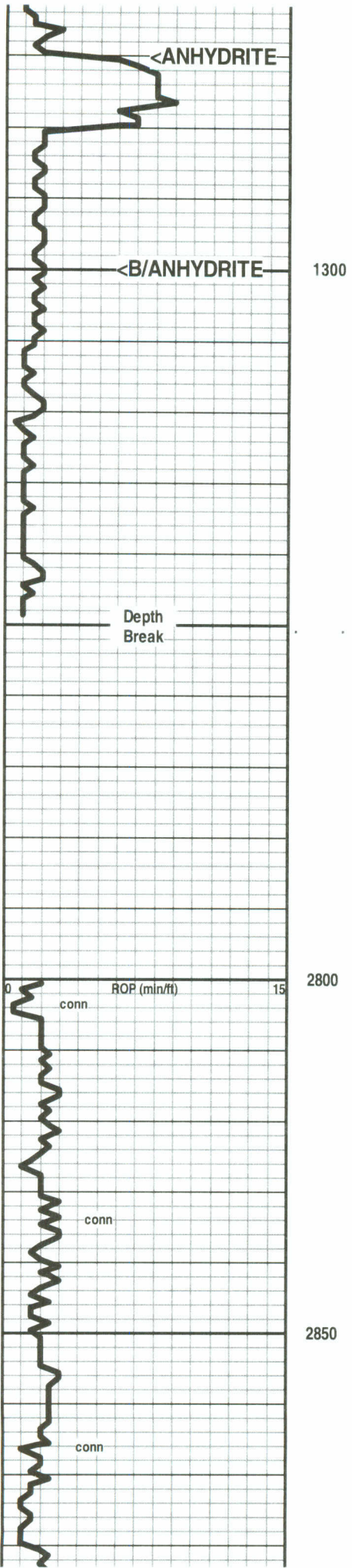
Accessories

MINERAL	Gyp	FOSSIL	Ostra	Sltstrg
Anhy	Hvymin	Algae	Pelec	Ssstrg
Arggrn	Kaol	Amph	Pellet	TEXTURE
Arg	Marl	Belm	Pisolite	Boundst
Bent	Minxl	Bioclst	Plant	Chalky
Bit	Nodule	Brach	Strom	Cryxln
Brecfrag	Phos	Bryozoa	STRINGER	Earthy
Calc	Pyr	Cephal	Anhy	Finexln
Carb	Salt	Coral	Arg	Grainst
Chtdk	Sandy	Crin	Bent	Lithogr
Chtlt	Silt	Echin	Coal	Microxln
Dol	Sil	Fish	Dol	Mudst
Feldspar	Sulphur	Foram	Gyp	Packst
Ferrpel	Tuff	Fossil	Ls	Wackest
Ferr		Gastro	Mrst	
Glau		Oolite		

Other Symbols

OIL SHOW	Spotted	Gas	INTERVAL
Gas show	Trace/ques		Core
Even	Dead		Dst

ROP (min/ft)	Depth	Lithology	Geological Descriptions	Remarks
0	1200			
15	50			



←-----

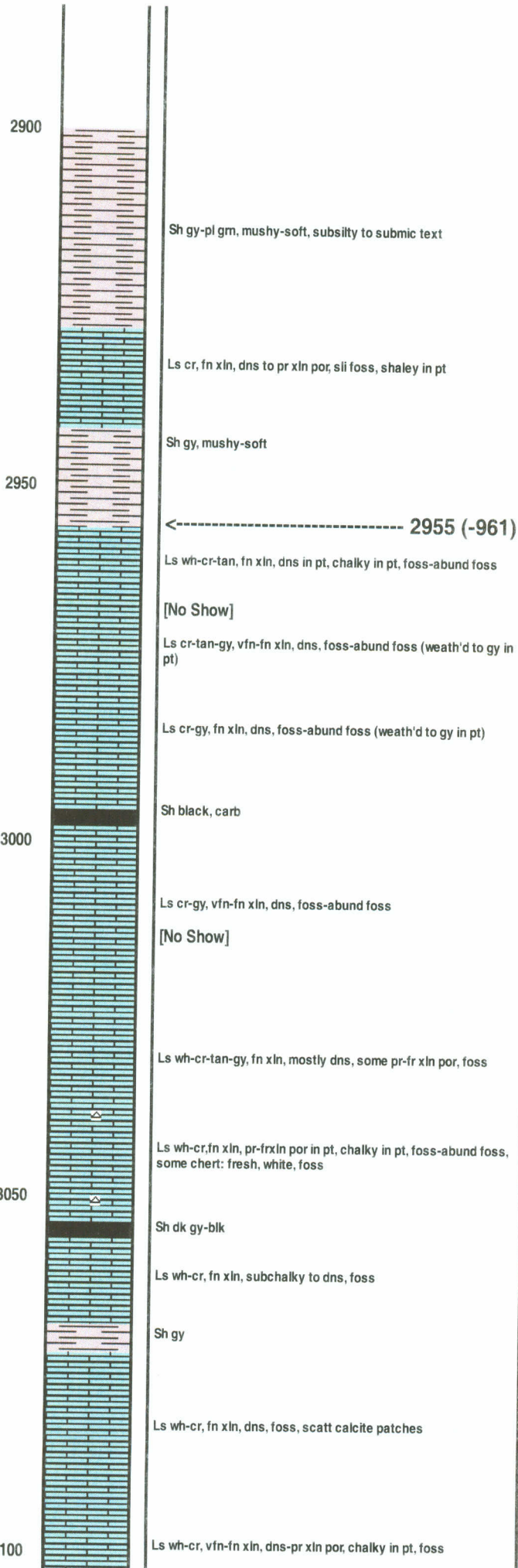
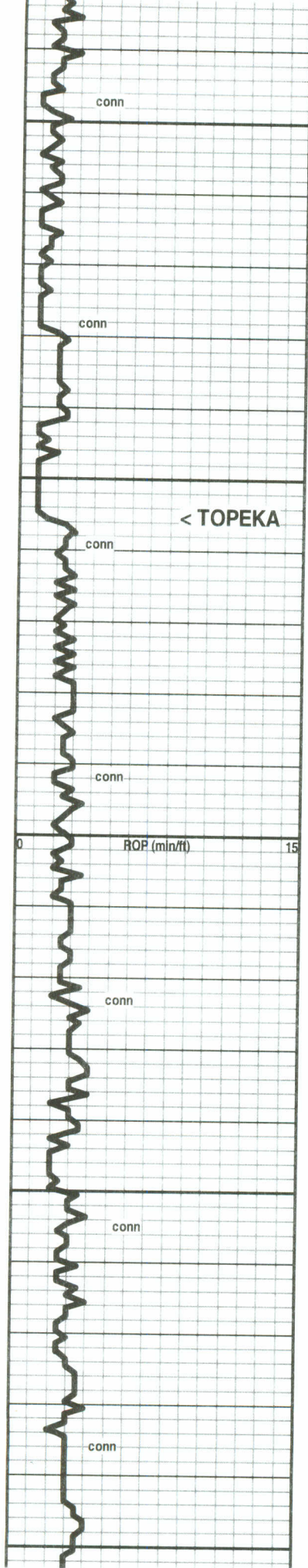
full anhydrite interval not distinguishable with drill time. Will correct to e-logs.

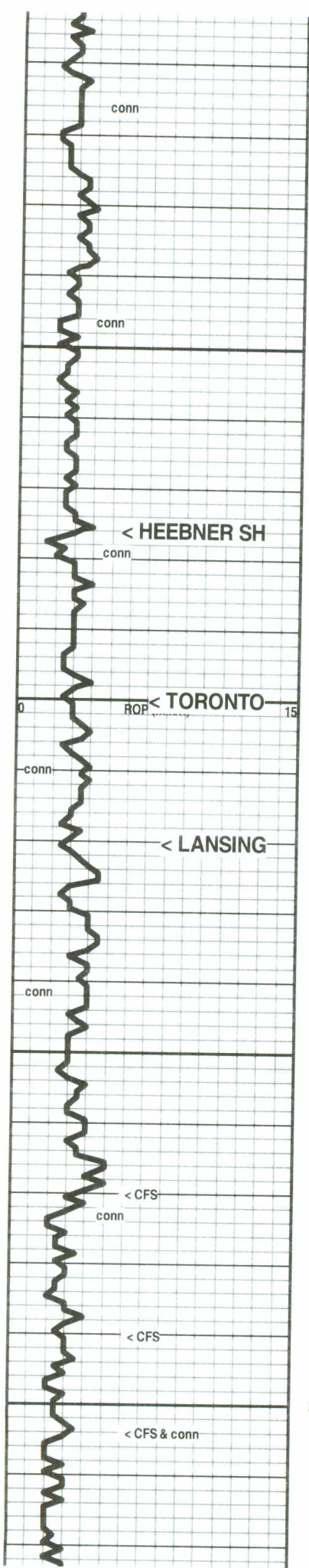
←----- ?

* Displace & Mud up @ 2688 ft.

7:00 AM, December 17, 2013

Mud Check, Drig @ 2819':
 Vis Wt WL LCM PV YP
 60+ 8.7 5.2 6 16 29
 Chl Hd pH Solids
 2700 nil 11.5 2.7



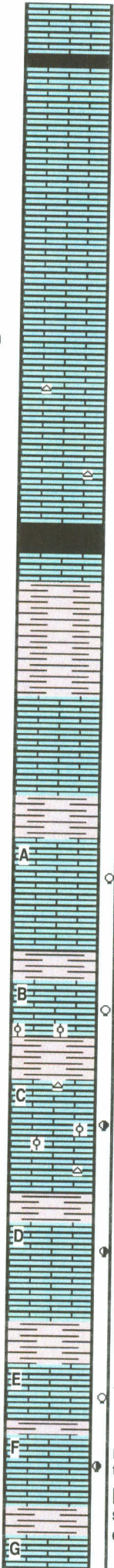


3150

3200

3250

3300



Sh black, carb

Ls cr-gy, vfn-f xln, dns, some subchalky, foss

Ls cr-gy, fn xln, dns, foss (some weth'd to gy)

[No Show]

Ls cr-gy, fn xln, dsn-pr xln por, foss, Rr pcs chert: fresh cr, foss

----- 3176 (-1182)

Sh black, carb (poorly repres in spls)

Sh gy (poorly repres in spls)

----- 3200 (-1206)

Ls cr, fn xln, subchalky in pt, foss

[No Show]

Sh gy

----- 3220 (-1226)

Ls cr-tan-gy, vfn-fn xln, mostly dns, Rr pcs with pr xln por, foss

[No Odor, No fluor, V Rr pcs with spotty stn, NSFO]

Sh gy-gmish gy

Ls cr-gy, vfn-fn xln, mostly dns, some pr xln por, foss (weath'd to gy in pt) some ool pcs, chert: fr, gy, foss

[No Odor, No fluor, Rr pcs with sm patches of brn stn, NSFO]

Ls wh-cr, fn xln, griany text in pt, mod am't pr xln por, scatt fr xln por, scatt pp & vug pores, ool in pt, chert: cr, fresh, ool & foss

[Sli Odor, Scatt Moderate Fluor, Scatt spotty-patchy to Rr even lt brn-brn stn,

Ls wh-cr-pl gy, fn xln, mostly dns, some chalky, scatt isolated vugs, foss

[No Odor, Rr Dull spots of fluor, Rr scatt spotty-patchy lt brn stn, NSFO, some barren vugs]

Sh gy-blk

Ls wh-cr, fn xln, chalky in pt, dns in pt, scatt pr xln por in pt, foss

[No Odor, No fluor, V Rr trace stn, NSFO]

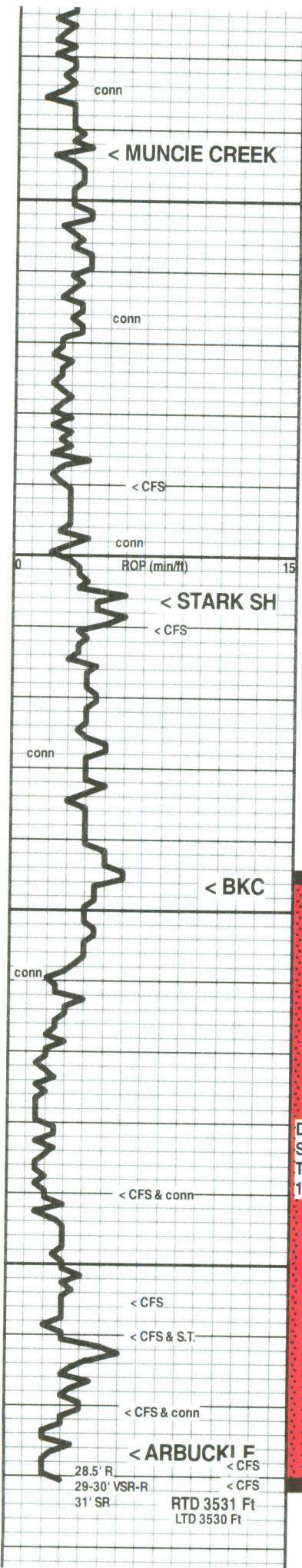
Ls wh-cr, fn xln, dns with scatt pr xln por, scatt pp & vug por, foss

[Fnt Odor, Scatt patches of dull-mod fluor, Some lt stn'g in porosity, some barren, Trace to v sli shows of FO in some pcs]

7:00 AM, December 18, 2013

Mud Check, Drilg @ 3267':

Vis	Wt	WL	LCM	PV	YP
53	9.3	5.8	4	12	20
Chl	Hd	pH	Solids		
2700	Tr	10.5	7.0		



3350

3400

3450

3500



Ls wh-cr-tan, fn xln, chalky in pt, dns in pt, scatt pr xln por, foss
 [No Show]

----- 3343 (-1349)
 Sh black, carb
 Sh gy
 Ls cr-tan, fn xln, dns, foss (some foss weath'd to gy)
 [No Show]
 Ls wh-cr-pl gy, fn xln, dns, some subsucr (dolom) pcs, foss in pt
 sh gy
 Ls wh-cr, fn xln, dns in pt, soft & chalky in pt, foss in pt
 [No Odor, No fluor, some chalky pcs with v lt tan stn'a, NSFO]
 Sh gy
 Ls wh-cr, fn xln, subchalky in pt, mostly dns with widely scatt vugs, foss in pt
 [No Odor, V Rr dull fluor, some v lt tan stn in vugs, some barren vugs, Rr trace show of oily/watery film on brk, scatt blk resid stn, NSFO]

----- 3406 (-1412)
 Sh black, carb
 Sh gy-gmish, silty in pt
 Ls wh-cr, fn xln, mostly dns to pr xln por, subchalky in pt, Rr pp pores, foss-abund foss
 [Low % pcs with spots & patches of tan stn, Rr watery film on brk, NSFO]
 Ls wh-cr-tan, vfn-fn xln, mostly dns, some chalky
 Sh black, carb
 Ls cr, fn xln, dns, ool in pt

----- 3446 (-1452)
 Sh gy-gmish
 Ls cr, vfn xln, dns, sli foss
 Abund chert: fresh, cr-tan-pl orange, foss in pt, Shale: gy-red, some Ls in spls
 Abund Chert: Mostly fresh, some sli weath, wh-cr-tan-orange, foss in pt; Shale gy-gmish-red; some Ls in spls, ool
 [Tr of patchy gilson/resid stn, NSFO]
 (3505' cfs washes pinkish)
 Mix of shales, chert & Ls, as above
 (few pcs of subsucr fn xln dol in 3510' cfs)
 [Sli Odor, Rr dull fluor, brn stn in dol with sli show FO, blk gilson stn in weath chert]
 Mix of sdy/dol Ls & Sd & Shale pl grn to blue-grn
 [Scatt brn stn in Sd & Dol & Dol-sd, NSFO]
 Sh epidote grn, subsilty-waxy text-brittle, some yell waxy-sdy shale, some siltstone in spls, pyr in pt, still high % Ls in spls and some fresh chert

----- 3526 (-1532)
 3531' circ spls: Low % dol, cr-tan-gy, fn xln, subsucr, mostly dns, some pr xln por, V Rr vugs, sdy, cherty
 [3528-3531: Mod Odor, Scatt dull fluor, spotty-patchy-even tan-lt brn stn, scatt sli show brn FO 2-pcs with dk sat stn dns pcs-no show]

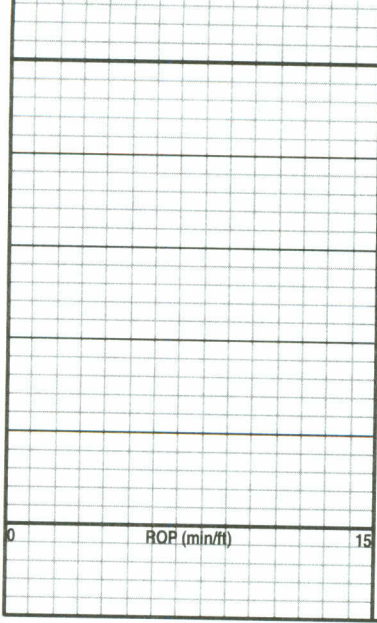
DST #1: 3444-3531 (Arbuckle)
 Times: 30-45-30-45
 Initial Open: Stg, b.o.b. 1.5 min, wk surface return blow
 Final Open: Stg, b.o.b. 3 min, wk surface return blow
 Rec: 1260' Total Fluid
 315' GWCMO: 30%g 50%o 10%w 10%m
 63' SGOCM: 05%g 05%o 90%m
 378' GOCM: 20%g 30%o 50%m
 441' GMCO: 20%g 65%o 15%m
 63' SMCO: 90%o 10%m
 (Fluid Sampler: Pr 250#, 1800 ml oil, 100 ml mud, 100 ml water)
 IHP: 1776 FHP: 1706
 IFP: 117-441 FFP: 432-609
 ISIP: 873 FSIP: 813
 BHT: 109°F

* Short Trip 36 Stands @ 3510' to prepare for later DST!

* Pipe Strap @ 3551 ft. = 1.30 ft short!

7:00 AM, December 19, 2013

Mud Check, CTCH @ 3519':
 Vis Wt WL LCM PV YP
 51 9.2 6.0 5 11 24
 Chl Hd pH Solids
 2900 Tr 10.0 6.3



3550

3600

ROP (min/ft) and ROP (min/ft)



CHARGE TO: Venture
 ADDRESS
 CITY, STATE, ZIP CODE

TICKET 25258
 W000 file

SERVICE LOCATIONS

1. WELLPROJECT NO. 1 LEASE Parker Unit COUNTY/PARISH Ellis STATE KS CITY Location DATE 12-20-13 OWNER

2. TICKET TYPE SALES CONTRACTOR Ness City KS RIG NAME/NO. 5 1/2 long string Dep to Bottom SHIPPED VIA CT DELIVERED TO Location ORDER NO.

3. WELL TYPE 0.1 WELL CATEGORY Development JOB PURPOSE Dep to Bottom WELL PERMIT NO.

4. REFERRAL LOCATION See 1, Tupellis, Risk WELL LOCATION

PRICE REFERENCE	SECONDARY REFERENCE/ PART NUMBER	ACCOUNTING			DESCRIPTION	QTY.	U/M	QTY.	U/M	UNIT PRICE	AMOUNT
		LOC	ACCT	DF							
575					MILEAGE #112	20	m.			6.00	120.00
579					Pump Charge Top to Bottom	1	ea			2000	2000.00
221					Liquids KTL	2	gal			25.00	50.00
281					Mud Flush	500	gal			1.25	625.00
290					Dr Air	4	gal			42.00	168.00
402					Centralizer	7	ea			70.00	490.00
403					Leament Basket	2	ea			300.00	600.00
405					Formation Packer Shoe	1	ea			1650.00	1650.00
406					Latch Down Plug + Bechle	1	ea			275.00	275.00

LEGAL TERMS: Customer hereby acknowledges and agrees to the terms and conditions on the reverse side hereof which include, but are not limited to, PAYMENT, RELEASE, INDEMNITY, and LIMITED WARRANTY provisions.

MUST BE SIGNED BY CUSTOMER OR CUSTOMER'S AGENT PRIOR TO START OF WORK OR DELIVERY OF GOODS

REMIT PAYMENT TO:
 SWIFT SERVICES, INC.
 P.O. BOX 466
 NESS CITY, KS 67560
 785-798-2300

DATE SIGNED 12-20-13 TIME SIGNED 1:40 A.M. P.M.

CUSTOMER DID NOT WISH TO RESPOND

SURVEY	AGREE	UN-DECIDED	DIS-AGREE	PAGE TOTAL	AMOUNT
OUR EQUIPMENT PERFORMED WITHOUT BREAKDOWN?				59.78	00
WE UNDERSTOOD AND MET YOUR NEEDS?				96.48	00
OUR SERVICE WAS PERFORMED WITHOUT DELAY?				15,626.60	00
WE OPERATED THE EQUIPMENT AND PERFORMED JOB CALCULATIONS SATISFACTORILY?				76.50	28
ARE YOU SATISFIED WITH OUR SERVICE?	<input type="checkbox"/> YES	<input type="checkbox"/> NO		TOTAL	16,391.28

CUSTOMER ACCEPTANCE OF MATERIALS AND SERVICES The customer hereby acknowledges receipt of the materials and services listed on this ticket.

SWIFT OPERATOR W000 APPROVAL

Thank You!



PO Box 466
Ness City, KS 67560
Off: 785-798-2300

TICKET CONTINUATION

TICKET No. 25258

CUSTOMER Venture

WELL Parker Unit 1

DATE 12-20-13

PAGE 2 OF 2

PRICE REFERENCE	SECONDARY REFERENCE/ PART NUMBER	ACCOUNTING			TIME	DESCRIPTION	WELL				DATE	UNIT PRICE	AMOUNT	
		LOC	ACCT	DF			QTY.	UM	QTY.	UM				
330		2				Swift Multi Density	400	SKS				18.50	7400.00	
226		2				Close	100	Lbs				2.50	250.00	
581		2				SERVICE CHARGE						2.00	800.00	
583		2				MILEAGE CHARGE						1.00	1198.00	
							TOTAL WEIGHT	39940	LOADED MILES	60	CUBIC FEET	400	TON MILES	1198

CONTINUATION TOTAL 9648.00

JOB LOG

SWIFT Services, Inc.

DATE 12-2013 PAGE NO.

CUSTOMER Venture WELL NO. 1 LEASE Parker unit JOB TYPE 5 1/2 long string TICKET NO. 25258

CHART NO.	TIME	RATE (BPM)	VOLUME (BBL)(GAL)	PUMPS		PRESSURE (PSI)		DESCRIPTION OF OPERATION AND MATERIALS
				T	C	TUBING	CASING	
	1400							on location
								TD 3531 SJ 42
								TP 3528 Insert 3486
								Centralizers 1,3,5,7,9,11,13
								Baskets 2,12
	1640							Start Pipe
	1830							Break Circulation
	1850							Drop Ball set Packer Shoe
	1910							Plug AH 30 sks
	1915	5	12		✓	200		Start Mud Flush
			20		✓	200		Start KCL Flush
		5	110		✓	200		Start Cement 200 sks @ 11.2#/gal
		5	46		✓	200		120 sks @ 12.5#/gal
		5	10		✓	200		50 sks @ 15.5#/gal
	2010							Drop Plug wash out Pump + Lines
	2014	7			✓	200		Start Displacement
		7	75		✓	900		Circulate Cement Circulated 20 sks no pit
	2030		85		✓	1000/1500		Land Plug Release Dry
								wash up Rack up
								Job complete Thank You Just, Brian, Rob



Services, Inc.

CHARGE TO: Venture Resources

TICKET 25582

Drill file

ADDRESS
CITY, STATE, ZIP CODE

PAGE 1 OF 2

SERVICE LOCATIONS	WELL/PROJECT NO.	LEASE	COUNTY/PARISH	STATE	CITY	DATE	OWNER
1. Ness City 1K5	# 1	Parker Unit	Ellis	KS	Hogs	12-14-13	
	TICKET TYPE	CONTRACTOR	RIG NAME/NO.	SHIPPED VIA	DELIVERED TO	ORDER NO.	
	<input checked="" type="checkbox"/> SERVICE <input type="checkbox"/> SALES	American Eagle	# 1	CT	Location		
	WELL TYPE	WELL CATEGORY	JOB PURPOSE		WELL PERMIT NO.	WELL LOCATION	
	Oil		Development			1-115-18 W	
4. REFERRAL LOCATION	INVOICE INSTRUCTIONS						

PRICE REFERENCE	SECONDARY REFERENCE/ PART NUMBER	ACCOUNTING			DESCRIPTION	MILEAGE	QTY.	UM	QTY.	UM	UNIT PRICE	AMOUNT
		LOC	ACCT	DF								
575					Tk # 113			30	mi		6.00	180.00
576 D					Pump Charge - Deep Surface	1	job				1500.00	1500.00
402					Centralizer	8 5/8	in	3	ea		80.00	240.00
403					Cement Basket	8 5/8	in	1	ea		400.00	400.00
410					Top Plug	8 5/8	in	1	ea		140.00	140.00
412					Baffle Plate	8 5/8	in	1	ea		125.00	125.00
194					Plug Container Rental	8 5/8	in	1	ea		250.00	250.00

LEGAL TERMS: Customer hereby acknowledges and agrees to the terms and conditions on the reverse side hereof which include, but are not limited to, PAYMENT, RELEASE, INDEMNITY, and LIMITED WARRANTY provisions.

MUST BE SIGNED BY CUSTOMER OR CUSTOMER'S AGENT PRIOR TO START OF WORK OR DELIVERY OF GOODS

X *[Signature]*
DATE SIGNED 12-14-13 TIME SIGNED 0200 A.M. P.M.

REMIT PAYMENT TO:
SWIFT SERVICES, INC.
P.O. BOX 466
NESS CITY, KS 67560
785-798-2300

SURVEY	AGREE	UN-DECIDED	DIS-AGREE	PAGE TOTAL	AMOUNT
OUR EQUIPMENT PERFORMED WITHOUT BREAKDOWN?				# 1	2835.00
WE UNDERSTOOD AND MET YOUR NEEDS?				42	11,116.26
OUR SERVICE WAS PERFORMED WITHOUT DELAY?				506 total	13,951.26
WE OPERATED THE EQUIPMENT AND PERFORMED JOB SATISFACTORILY?				TAX	675.14
ARE YOU SATISFIED WITH OUR SERVICE?	<input type="checkbox"/> YES	<input type="checkbox"/> NO		TOTAL	14,626.40

SWIFT OPERATOR *David Huehn* APPROVAL *[Signature]*

CUSTOMER ACCEPTANCE OF MATERIALS AND SERVICES The customer hereby acknowledges receipt of the materials and services listed on this ticket

Thank You!



PO Box 466
Ness City, KS 67560
Off: 785-798-2300

TICKET CONTINUATION

TICKET No. 25582

CUSTOMER: Venture Resources
WELL: Parker Unit # 1
DATE: 12-14-13
PAGE 2 OF 2

PRICE REFERENCE	SECONDARY REFERENCE/ PART NUMBER	ACCOUNTING			TIME	DESCRIPTION	WELL				UNIT PRICE	AMOUNT	
		LOC	ACCT	DF			QTY.	U/M	QTY.	U/M			
330		1				SMD Cement			425	SKS	18	7862	50
276		1				Fibrec	1/4	lb	100	lbs	2	250	00
290		1				D-Air			5	gal	42	210	00
281		1				Mud Flush			500	gal	1	625	00
221		1				Liquid HCL			2	gal	25	50	00
581		1				SERVICE CHARGE			425		2	850	00
583		1				MILEAGE TOTAL WEIGHT CHARGE			60		1	1268	76
						LOADED MILES			60				
						CUBIC FEET			1248.76				
						TON MILES			1248.76				
CONTINUATION TOTAL												11,116.26	

JOB LOG

SWIFT Services, Inc.

DATE 12-14-13 PAGE NO. 1

CUSTOMER
Venture Resources

WELL NO. #1

LEASE
Parker Unit

JOB TYPE
Cement 8 5/8" Longstring Surface

TICKET NO.
25582

CHART NO.	TIME	RATE (BPM)	VOLUME (BBL) (GAL)	PUMPS		PRESSURE (PSI)		DESCRIPTION OF OPERATION AND MATERIALS
				T	C	TUBING	CASING	
	0200							on Location
								TD - 1280 TP - 1278
								SJ - 40.38" #1 8 5/8" 23"
								Centralizer - #1 #3 #15
								425 sks SMD w 1/4" Floccle
	0455							Start 8 5/8" casing in well
	0640							Break Circulation
	0715	6 3/4	12		✓	200	Pump 500 gal	Mud Flush
		6 3/4	20		✓	200	Pump 20 bbl	KCL Flush
	0720	5	47		✓	200	mix 100 sks @	11.8 ppg
		5	55		✓	200	mix 150 sks @	12.7 ppg
		5	31		✓	350	mix 100 sks @	13.5 ppg
		5	20		✓	400	mix 75 sks @	14.5 ppg
								Release Top Plug
								Wash out Pump + Lines
	0805	6 3/4	0		✓	100	Start Displacement	
		6 3/4	43		✓	200	Lift PSI	
		6 3/4	60		✓	450	Circulate Cement to pit	35 sks
	0820	6 3/4	79.2		✓	600	Land Top Plug	
		0	79.2		✓	600	Shut in Valve	
							Release PSI	- Hold -
								wash up Truck
	0900							Job Complete

Thank You
Dave, John, Isaac