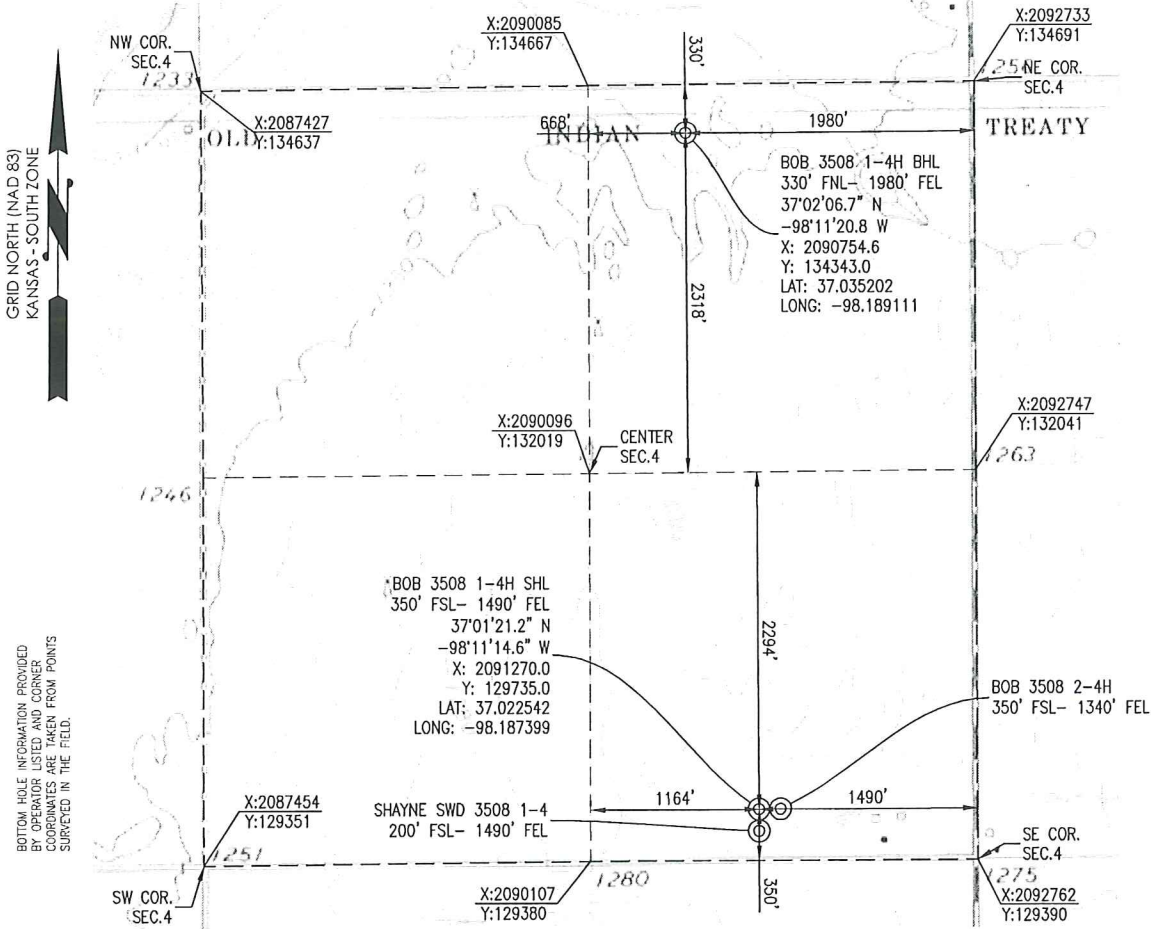




170 Commerce Road, Building 201  
 Conway, Arkansas 72032  
 501.328.3316 | 501.328.3325 F  
 www.craftontull.com

HARPER COUNTY, KANSAS  
 350' FSL- 1490' FEL SECTION 4 TOWNSHIP 35S RANGE 08W 6TH P.M.



GRID NORTH (NAD 83)  
 KANSAS - SOUTH ZONE  
 BOTTOM HOLE INFORMATION PROVIDED  
 BY OPERATOR. COORDINATES  
 SURVEYED IN THE FIELD.

**ELEVATION:**  
 1275' GR. AT STAKE

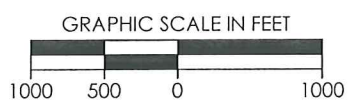
OPERATOR: SANDRIDGE ENERGY, INC. WELL NO: 1-4H  
 LEASE NAME: BOB 3508

TOPOGRAPHIC & VEGETATION: LOCATION FELL IN A FIELD  
 GOOD DRILL SITE: YES REFERENCE STAKES OR ALTERNATE LOCATION STAKES SET: NONE

BEST ACCESSIBILITY TO LOCATION: SOUTH OR EAST LINE  
 DISTANCE & DIRECTION FROM HWY JCT OR TOWN: FROM THE JCT. OF KS-2 & 80 AVE (±8.5 MILES WEST OF ANTHONY, KS) TRAVEL SOUTH ON 80 AVE/SW 80 AVE FOR ±9.0 MILES TO THE SOUTHEAST CORNER OF SECTION 4, T35S-R08W.

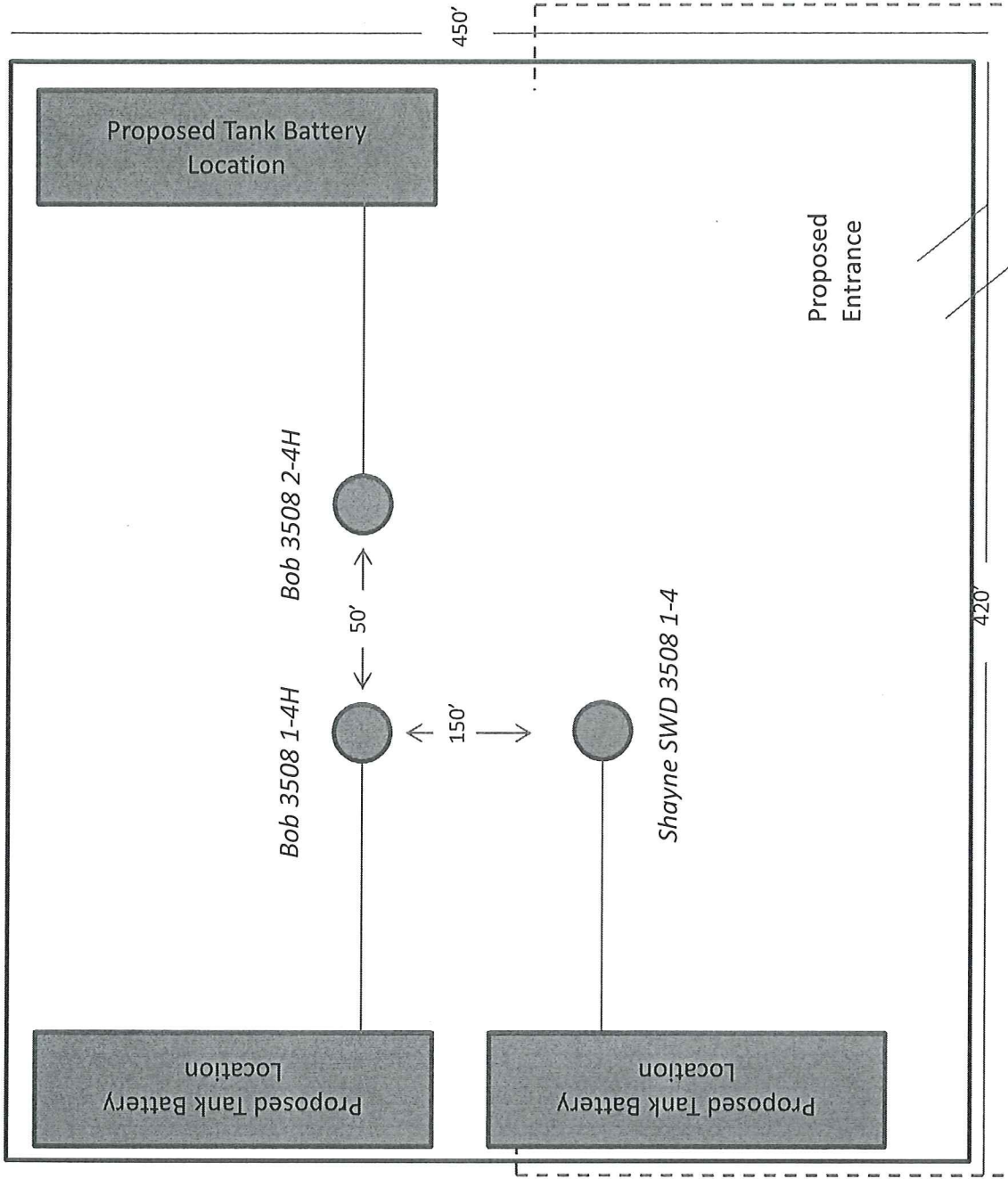
(THE FOLLOWING INFORMATION WAS GATHERED USING A GPS RECEIVER ACCURACY ±2-3 METERS)  
 GPS DATUM: NAD-27  
 LAT: 37.022542  
 LONG: -98.187399  
 STATE PLANE COORDINATES:  
 ZONE: KS-SOUTH NAD-27  
 X: 2091270.0  
 Y: 129735.0

GENERAL NOTES:  
 THE TIES AND FOOTAGES SHOWN ON THIS PLAT ARE FROM LINES OF OCCUPATION FROM A SURVEY MADE ON THE GROUND AND / OR BEARING AND DISTANCES FROM THE GENERAL LAND OFFICE PLAT OF THE AREA SHOWN AND MAY NOT BE THE ACTUAL PROPERTY CORNERS. THIS PLAT DOES NOT REPRESENT A TRUE BOUNDARY SURVEY. DRILL SITE CONDITION DETERMINATIONS WERE MADE BY SANDRIDGE ENERGY INC. REPRESENTATIVES.



REVISION		<b>SandRidge</b>	
△	MOVED SHL (2-19-2014)	"BOB 3508 1-4H" PART OF THE SE1/4 OF SECTION 4, T-35-S, R-08-W PROPOSED DRILL SITE HARPER COUNTY, KANSAS	
△	MOVED BHL (2-24-2014)		
SCALE: 1" = 1000'		DRAWN BY: MF SHEET NO.: 2 OF 4	
PLOT DATE: 02-24-2014			

Bob 3508 1-4H & Bob 3508 2-4H & Shayne SWD 3508 1-4



Proposed Electric Line