



## DRILL STEM TEST REPORT

Prepared For: **American Warrior Inc**

PO Box 399  
Garden City, KS 67846

ATTN: Kevin Timson

### **Congdon #12-28**

### **28-23s-32w Finney,KS**

Start Date: 2014.02.01 @ 12:30:19

End Date: 2014.02.01 @ 17:42:34

Job Ticket #: 56623                      DST #: 1

Trilobite Testing, Inc

PO Box 362 Hays, KS 67601

ph: 785-625-4778 fax: 785-625-5620

Printed: 2014.02.05 @ 11:15:14







**TRILOBITE  
TESTING, INC**

# DRILL STEM TEST REPORT

**TOOL DIAGRAM**

American Warrior Inc  
PO Box 399  
Garden City, KS 67846  
ATTN: Kevin Timson

**28-23s-32w Finney,KS**  
**Congdon #12-28**  
Job Ticket: 56623      **DST#: 1**  
Test Start: 2014.02.01 @ 12:30:19

**Tool Information**

Drill Pipe:	Length: 4506.00 ft	Diameter: 3.80 inches	Volume: 63.21 bbl	Tool Weight: 1500.00 lb
Heavy Wt. Pipe:	Length: 0.00 ft	Diameter: 0.00 inches	Volume: 0.00 bbl	Weight set on Packer: 25000.00 lb
Drill Collar:	Length: 0.00 ft	Diameter: 0.00 inches	Volume: 0.00 bbl	Weight to Pull Loose: 75000.00 lb
			<u>Total Volume: 63.21 bbl</u>	Tool Chased 0.00 ft
Drill Pipe Above KB:	31.00 ft			String Weight: Initial 58000.00 lb
Depth to Top Packer:	4503.00 ft			Final 58000.00 lb
Depth to Bottom Packer:	ft			
Interval between Packers:	37.00 ft			
Tool Length:	65.00 ft			
Number of Packers:	2	Diameter: 6.75 inches		

Tool Comments:

<b>Tool Description</b>	<b>Length (ft)</b>	<b>Serial No.</b>	<b>Position</b>	<b>Depth (ft)</b>	<b>Accum. Lengths</b>
-------------------------	--------------------	-------------------	-----------------	-------------------	-----------------------

Change Over Sub	1.00			4476.00	
Shut In Tool	5.00			4481.00	
Hydraulic tool	5.00			4486.00	
Jars	5.00			4491.00	
Safety Joint	3.00			4494.00	
Packer	5.00			4499.00	28.00      Bottom Of Top Packer
Packer	4.00			4503.00	
Stubb	1.00			4504.00	
Recorder	0.00	6771	Inside	4504.00	
Recorder	0.00	8844	Outside	4504.00	
Perforations	31.00			4535.00	
Bullnose	5.00			4540.00	37.00      Bottom Packers & Anchor

**Total Tool Length: 65.00**



**TRILOBITE  
TESTING, INC**

# DRILL STEM TEST REPORT

**FLUID SUMMARY**

American Warrior Inc  
PO Box 399  
Garden City, KS 67846  
ATTN: Kevin Timson

**28-23s-32w Finney,KS**  
**Congdon #12-28**  
Job Ticket: 56623      **DST#: 1**  
Test Start: 2014.02.01 @ 12:30:19

## Mud and Cushion Information

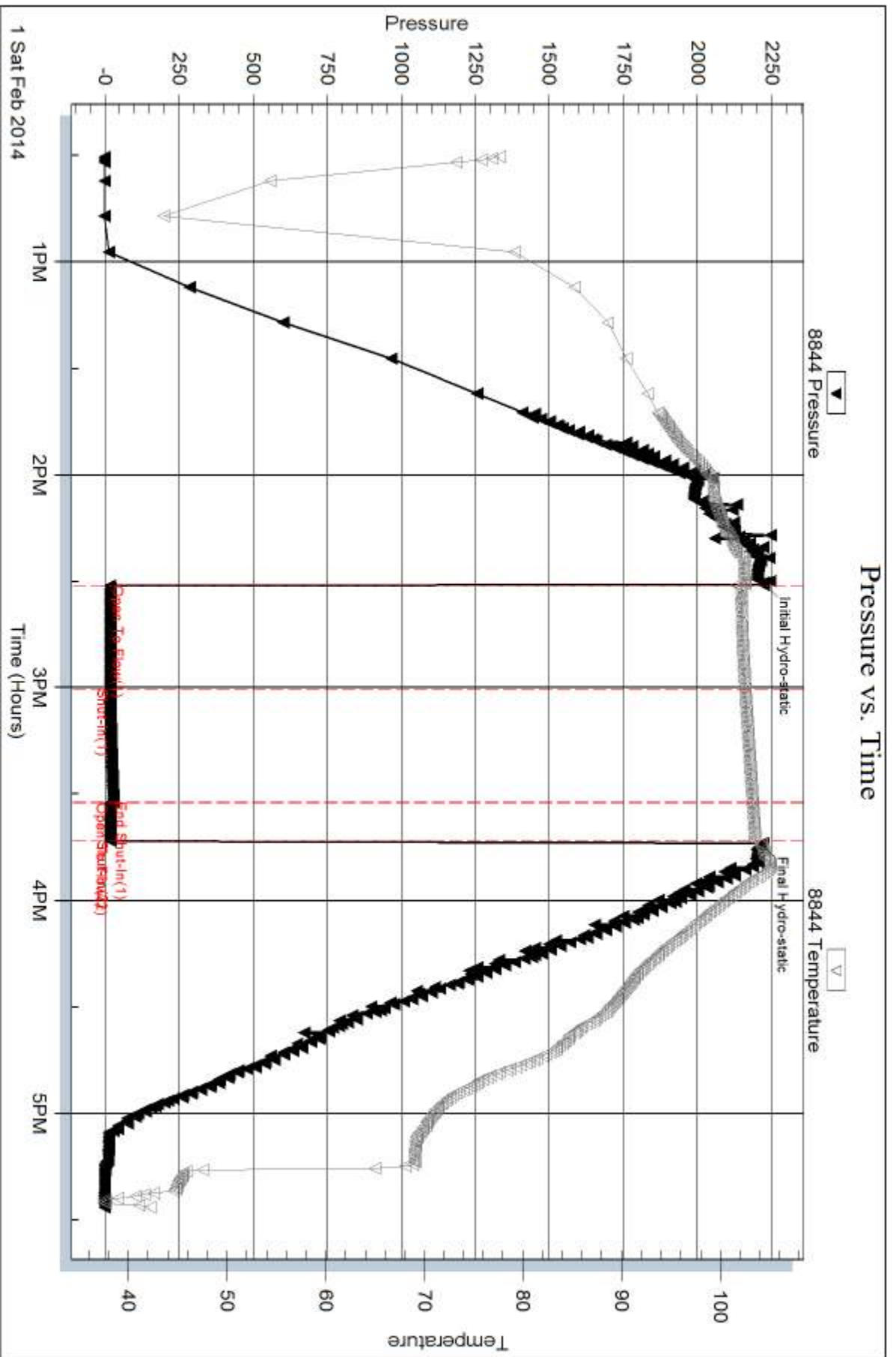
Mud Type: Gel Chem	Cushion Type:	Oil API:	0 deg API
Mud Weight: 9.00 lb/gal	Cushion Length: ft	Water Salinity:	0 ppm
Viscosity: 57.00 sec/qt	Cushion Volume: bbl		
Water Loss: 6.37 in <sup>3</sup>	Gas Cushion Type:		
Resistivity: 0.00 ohm.m	Gas Cushion Pressure: psig		
Salinity: 1700.00 ppm			
Filter Cake: 1.00 inches			

## Recovery Information

Recovery Table

Length ft	Description	Volume bbl
1.00	mud 100%m	0.014

Total Length: 1.00 ft      Total Volume: 0.014 bbl  
Num Fluid Samples: 0      Num Gas Bombs: 0      Serial #:  
Laboratory Name:      Laboratory Location:  
Recovery Comments:



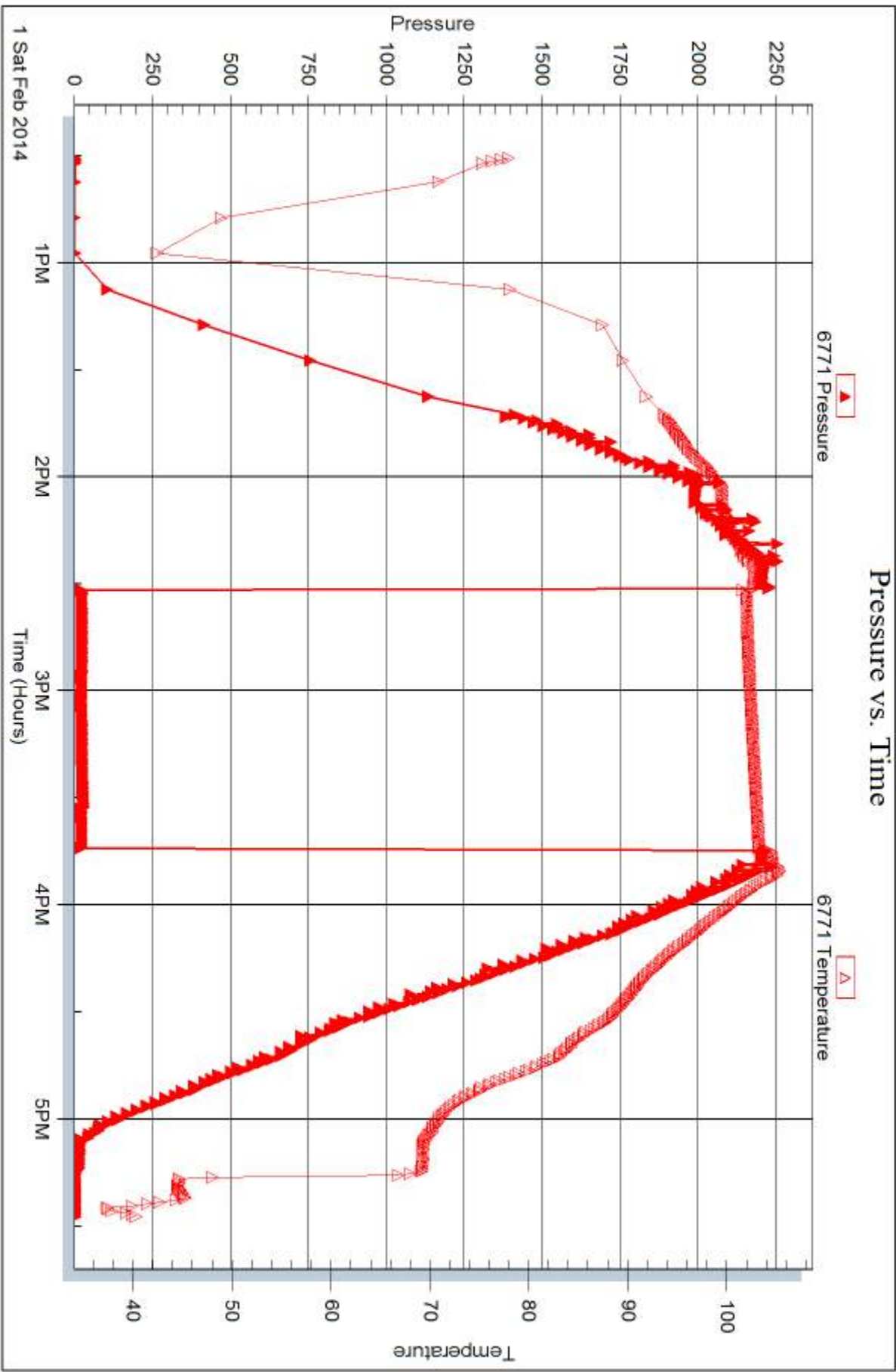
Serial #: 6771

Inside

American Warrior Inc

Congdon #12-28

DST Test Number: 1



Triobite Testing, Inc

Ref. No: 56623

Printed: 2014.02.05 @ 11:15:16



## DRILL STEM TEST REPORT

Prepared For: **American Warrior Inc**

PO Box 399  
Garden City, KS 67846

ATTN: Kevin Timson

### **Congdon #12-28**

### **28-23s-32w Finney,KS**

Start Date: 2014.02.02 @ 15:56:10

End Date: 2014.02.02 @ 22:35:40

Job Ticket #: 56624                      DST #: 2

Trilobite Testing, Inc

PO Box 362 Hays, KS 67601

ph: 785-625-4778 fax: 785-625-5620

Printed: 2014.02.05 @ 11:14:41





**TRILOBITE TESTING, INC**

# DRILL STEM TEST REPORT

American Warrior Inc  
 PO Box 399  
 Garden City, KS 67846  
 ATTN: Kevin Timson

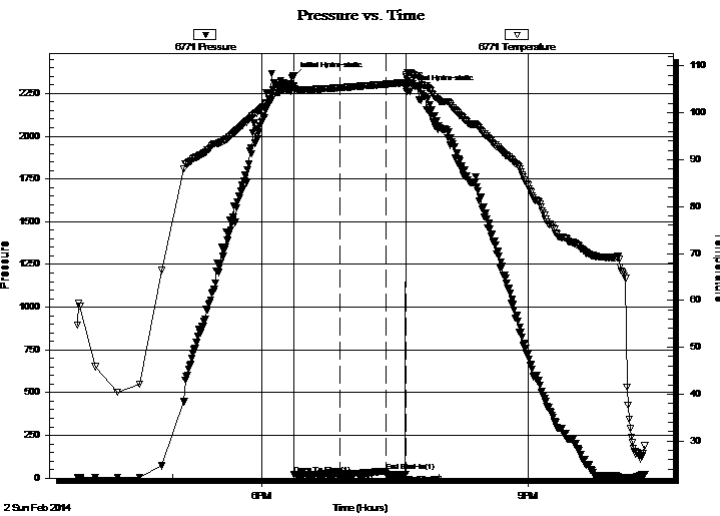
**28-23s-32w Finney, KS**  
**Congdon #12-28**  
 Job Ticket: 56624 **DST#: 2**  
 Test Start: 2014.02.02 @ 15:56:10

## GENERAL INFORMATION:

Formation: **Morrow**  
 Deviated: No Whipstock: ft (KB)  
 Time Tool Opened: 18:22:10  
 Time Test Ended: 22:35:40  
 Interval: **4684.00 ft (KB) To 4711.00 ft (KB) (TVD)**  
 Total Depth: 4711.00 ft (KB) (TVD)  
 Hole Diameter: 7.88 inches Hole Condition: Fair  
 Test Type: Conventional Bottom Hole (Reset)  
 Tester: Shane McBride  
 Unit No: 55  
 Reference Elevations: 2852.00 ft (KB)  
 2840.00 ft (CF)  
 KB to GR/CF: 12.00 ft

**Serial #: 6771 Inside**  
 Press@RunDepth: 23.74 psig @ 4685.00 ft (KB) Capacity: 8000.00 psig  
 Start Date: 2014.02.02 End Date: 2014.02.02 Last Calib.: 2014.02.02  
 Start Time: 15:56:10 End Time: 22:18:40 Time On Btm: 2014.02.02 @ 18:21:55  
 Time Off Btm: 2014.02.02 @ 19:37:40

TEST COMMENT: 1/4" blow died in 6 min.  
 No return  
 No blow  
 Pull tool



## PRESSURE SUMMARY

Time (Min.)	Pressure (psig)	Temp (deg F)	Annotation
0	2349.08	105.71	Initial Hydro-static
1	22.02	105.06	Open To Flow (1)
32	23.74	105.36	Shut-In(1)
62	41.46	106.09	End Shut-In(1)
62	24.11	106.10	Open To Flow (2)
76	23.61	106.48	Shut-In(2)
76	2274.78	107.64	Final Hydro-static

## Recovery

Length (ft)	Description	Volume (bbl)
3.00	mud 100% m	0.04

\* Recovery from multiple tests

## Gas Rates

Choke (inches)	Pressure (psig)	Gas Rate (Mcf/d)





**TRILOBITE  
TESTING, INC**

# DRILL STEM TEST REPORT

**TOOL DIAGRAM**

American Warrior Inc  
PO Box 399  
Garden City, KS 67846  
ATTN: Kevin Timson

**28-23s-32w Finney,KS**  
**Congdon #12-28**  
Job Ticket: 56624      **DST#: 2**  
Test Start: 2014.02.02 @ 15:56:10

**Tool Information**

Drill Pipe:	Length: 4662.00 ft	Diameter: 3.80 inches	Volume: 65.40 bbl	Tool Weight:	1500.00 lb
Heavy Wt. Pipe:	Length: 0.00 ft	Diameter: 0.00 inches	Volume: 0.00 bbl	Weight set on Packer:	25000.00 lb
Drill Collar:	Length: 0.00 ft	Diameter: 0.00 inches	Volume: 0.00 bbl	Weight to Pull Loose:	80000.00 lb
			<u>Total Volume: 65.40 bbl</u>	Tool Chased	0.00 ft
Drill Pipe Above KB:	6.00 ft			String Weight: Initial	60000.00 lb
Depth to Top Packer:	4684.00 ft			Final	60000.00 lb
Depth to Bottom Packer:	ft				
Interval between Packers:	27.00 ft				
Tool Length:	55.00 ft				
Number of Packers:	2	Diameter: 6.75 inches			

Tool Comments:

<b>Tool Description</b>	<b>Length (ft)</b>	<b>Serial No.</b>	<b>Position</b>	<b>Depth (ft)</b>	<b>Accum. Lengths</b>
-------------------------	--------------------	-------------------	-----------------	-------------------	-----------------------

Change Over Sub	1.00			4657.00	
Shut In Tool	5.00			4662.00	
Hydraulic tool	5.00			4667.00	
Jars	5.00			4672.00	
Safety Joint	3.00			4675.00	
Packer	5.00			4680.00	28.00      Bottom Of Top Packer
Packer	4.00			4684.00	
Stubb	1.00			4685.00	
Recorder	0.00	6771	Inside	4685.00	
Recorder	0.00	8844	Outside	4685.00	
Perforations	21.00			4706.00	
Bullnose	5.00			4711.00	27.00      Bottom Packers & Anchor

**Total Tool Length: 55.00**



**TRILOBITE  
TESTING, INC**

# DRILL STEM TEST REPORT

**FLUID SUMMARY**

American Warrior Inc  
PO Box 399  
Garden City, KS 67846  
ATTN: Kevin Timson

**28-23s-32w Finney,KS**  
**Congdon #12-28**  
Job Ticket: 56624      **DST#: 2**  
Test Start: 2014.02.02 @ 15:56:10

## Mud and Cushion Information

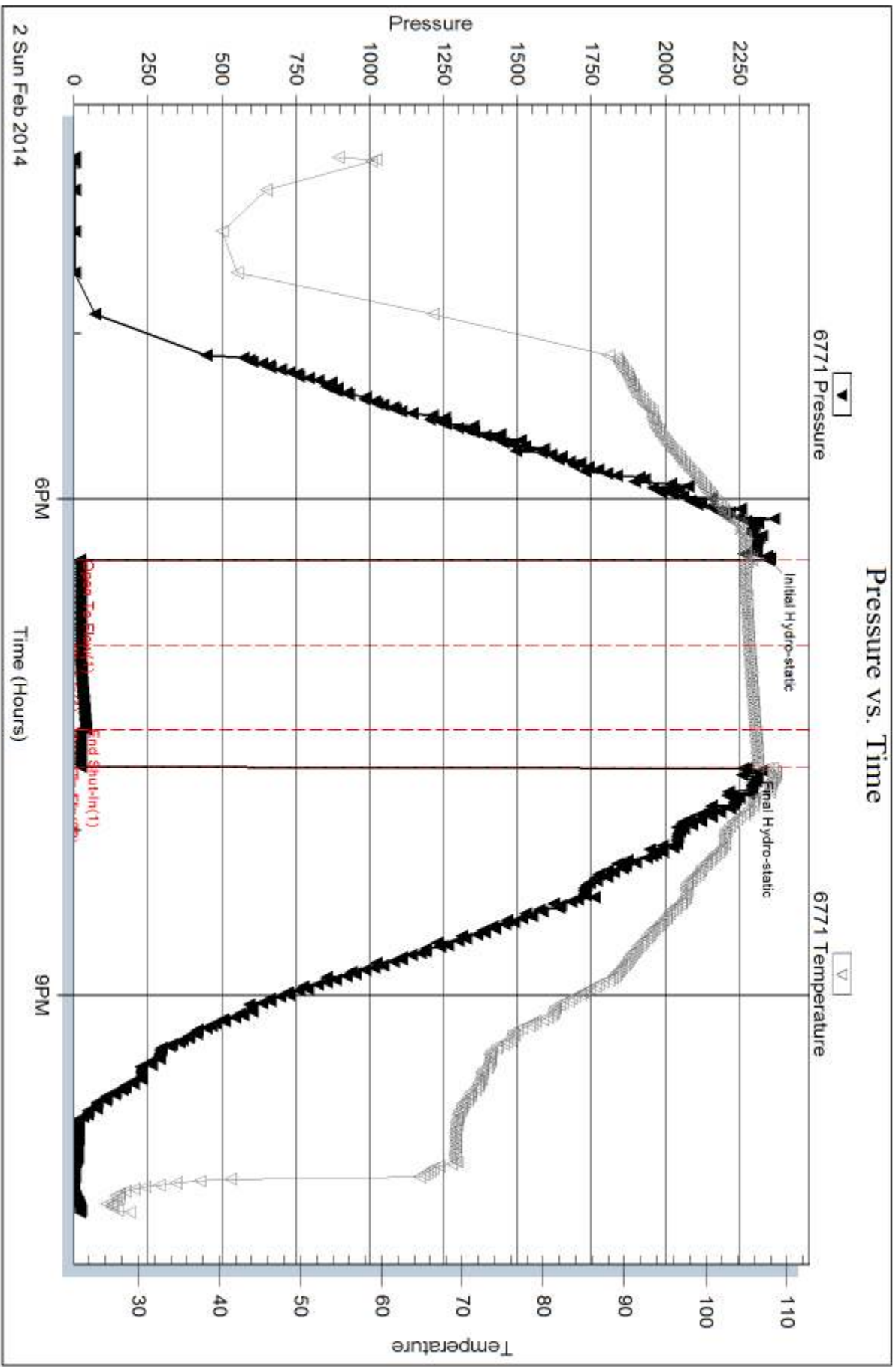
Mud Type: Gel Chem	Cushion Type:	Oil API:	0 deg API
Mud Weight: 9.00 lb/gal	Cushion Length: ft	Water Salinity:	0 ppm
Viscosity: 48.00 sec/qt	Cushion Volume: bbl		
Water Loss: 7.17 in <sup>3</sup>	Gas Cushion Type:		
Resistivity: 0.00 ohm.m	Gas Cushion Pressure: psig		
Salinity: 2500.00 ppm			
Filter Cake: 1.00 inches			

## Recovery Information

Recovery Table

Length ft	Description	Volume bbl
3.00	mud 100%m	0.042

Total Length: 3.00 ft      Total Volume: 0.042 bbl  
 Num Fluid Samples: 0      Num Gas Bombs: 0      Serial #:  
 Laboratory Name:      Laboratory Location:  
 Recovery Comments:

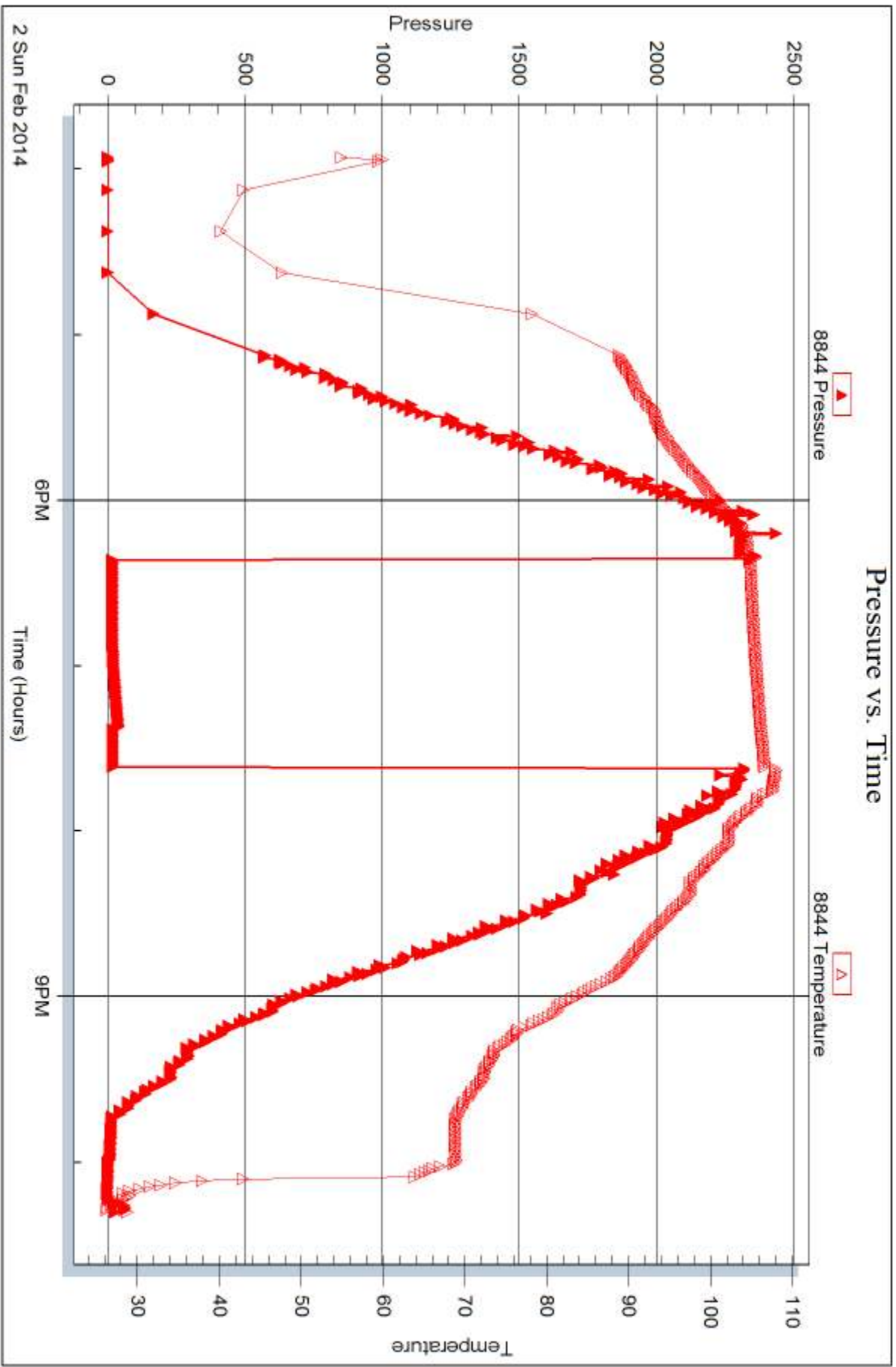


Serial #: 8844

Outside American Warrior Inc

Congdon #12-28

DST Test Number: 2



Triobite Testing, Inc

Ref. No: 56624

Printed: 2014.02.05 @ 11:14:43



## DRILL STEM TEST REPORT

Prepared For: **American Warrior Inc**

PO Box 399  
Garden City, KS 67846

ATTN: Kevin Timson

### **Congdon #12-28**

#### **28-23s-32w Finney,KS**

Start Date: 2014.02.03 @ 14:40:40

End Date: 2014.02.03 @ 22:45:25

Job Ticket #: 56625                      DST #: 3

Trilobite Testing, Inc

PO Box 362 Hays, KS 67601

ph: 785-625-4778 fax: 785-625-5620

Printed: 2014.02.05 @ 11:13:13



**TRILOBITE  
TESTING, INC**

# DRILL STEM TEST REPORT

American Warrior Inc  
PO Box 399  
Garden City, KS 67846  
ATTN: Kevin Timson

**28-23s-32w Finney, KS**  
**Congdon #12-28**  
Job Ticket: 56625      **DST#: 3**  
Test Start: 2014.02.03 @ 14:40:40

## GENERAL INFORMATION:

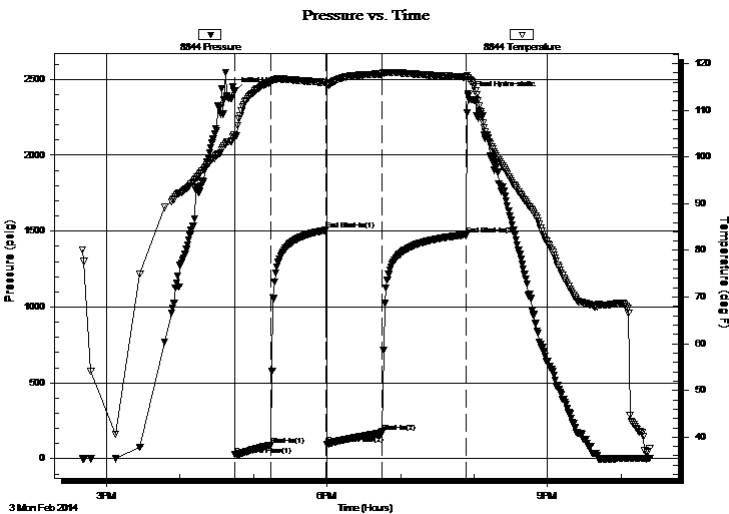
Formation: **St. Louis**  
Deviated: No      Whipstock:      ft (KB)  
Time Tool Opened: 16:44:55  
Time Test Ended: 22:45:25  
Interval: **4780.00 ft (KB) To 4796.00 ft (KB) (TVD)**  
Total Depth: 4796.00 ft (KB) (TVD)  
Hole Diameter: 7.88 inches      Hole Condition: Fair  
Reference Elevations: 2852.00 ft (KB)  
2840.00 ft (CF)  
KB to GR/CF: 12.00 ft

## Serial #: 8844      Outside

Press@RunDepth: 171.29 psig @ 4781.00 ft (KB)      Capacity: 8000.00 psig  
Start Date: 2014.02.03      End Date: 2014.02.03      Last Calib.: 2014.02.03  
Start Time: 14:40:40      End Time: 22:23:25      Time On Btm: 2014.02.03 @ 16:44:25  
Time Off Btm: 2014.02.03 @ 19:54:55

TEST COMMENT: B.O.B. in 8 1/2 min.  
2 1/2" return blow  
B.O.B. in 10 min.  
9 1/2" return blow

## PRESSURE SUMMARY



Time (Min.)	Pressure (psig)	Temp (deg F)	Annotation
0	2420.76	104.72	Initial Hydro-static
1	25.48	104.12	Open To Flow (1)
30	89.46	116.07	Shut-In(1)
75	1506.27	115.95	End Shut-In(1)
76	93.15	115.36	Open To Flow (2)
121	171.29	117.80	Shut-In(2)
190	1475.04	117.14	End Shut-In(2)
191	2390.72	117.06	Final Hydro-static

## Recovery

Length (ft)	Description	Volume (bbl)
31.00	c g o 15g 85o	0.43
93.00	g o & m c w 15g 15o 20m 50w	1.30
93.00	g s m c w 15g 5m 80w	1.30
124.00	g w 15g 85w	1.74
0.00	1023' gas in pipe	0.00

\* Recovery from multiple tests

## Gas Rates

	Choke (inches)	Pressure (psig)	Gas Rate (Mcf/d)







**TRILOBITE  
TESTING, INC**

# DRILL STEM TEST REPORT

**TOOL DIAGRAM**

American Warrior Inc  
PO Box 399  
Garden City, KS 67846  
ATTN: Kevin Timson

**28-23s-32w Finney,KS**  
**Congdon #12-28**  
Job Ticket: 56625      **DST#: 3**  
Test Start: 2014.02.03 @ 14:40:40

**Tool Information**

Drill Pipe:	Length: 4756.00 ft	Diameter: 3.80 inches	Volume: 66.71 bbl	Tool Weight:	1500.00 lb
Heavy Wt. Pipe:	Length: 0.00 ft	Diameter: 0.00 inches	Volume: 0.00 bbl	Weight set on Packer:	25000.00 lb
Drill Collar:	Length: 0.00 ft	Diameter: 0.00 inches	Volume: 0.00 bbl	Weight to Pull Loose:	80000.00 lb
			<u>Total Volume: 66.71 bbl</u>	Tool Chased	0.00 ft
Drill Pipe Above KB:	4.00 ft			String Weight: Initial	58000.00 lb
Depth to Top Packer:	4780.00 ft			Final	60000.00 lb
Depth to Bottom Packer:	ft				
Interval between Packers:	16.00 ft				
Tool Length:	44.00 ft				
Number of Packers:	2	Diameter: 6.75 inches			

Tool Comments:

**Tool Description**

**Length (ft)    Serial No.    Position    Depth (ft)    Accum. Lengths**

Tool Description	Length (ft)	Serial No.	Position	Depth (ft)	Accum. Lengths
Change Over Sub	1.00			4753.00	
Shut In Tool	5.00			4758.00	
Hydraulic tool	5.00			4763.00	
Jars	5.00			4768.00	
Safety Joint	3.00			4771.00	
Packer	5.00			4776.00	28.00      Bottom Of Top Packer
Packer	4.00			4780.00	
Stubb	1.00			4781.00	
Recorder	0.00	6771	Inside	4781.00	
Recorder	0.00	8844	Outside	4781.00	
Perforations	10.00			4791.00	
Bullnose	5.00			4796.00	16.00      Bottom Packers & Anchor

**Total Tool Length:    44.00**



**TRILOBITE  
TESTING, INC**

# DRILL STEM TEST REPORT

## FLUID SUMMARY

American Warrior Inc  
PO Box 399  
Garden City, KS 67846  
ATTN: Kevin Timson

**28-23s-32w Finney,KS**  
**Congdon #12-28**  
Job Ticket: 56625      **DST#: 3**  
Test Start: 2014.02.03 @ 14:40:40

### Mud and Cushion Information

Mud Type: Gel Chem	Cushion Type:	Oil API: 32 deg API
Mud Weight: 9.00 lb/gal	Cushion Length: ft	Water Salinity: 32000 ppm
Viscosity: 54.00 sec/qt	Cushion Volume: bbl	
Water Loss: 6.37 in <sup>3</sup>	Gas Cushion Type:	
Resistivity: 0.00 ohm.m	Gas Cushion Pressure: psig	
Salinity: 3000.00 ppm		
Filter Cake: 1.00 inches		

### Recovery Information

Recovery Table

Length ft	Description	Volume bbl
31.00	c g o 15g 85o	0.435
93.00	g o & m c w 15g 15o 20m 50w	1.305
93.00	g s m c w 15g 5m 80w	1.305
124.00	g w 15g 85w	1.739
0.00	1023'gas in pipe	0.000

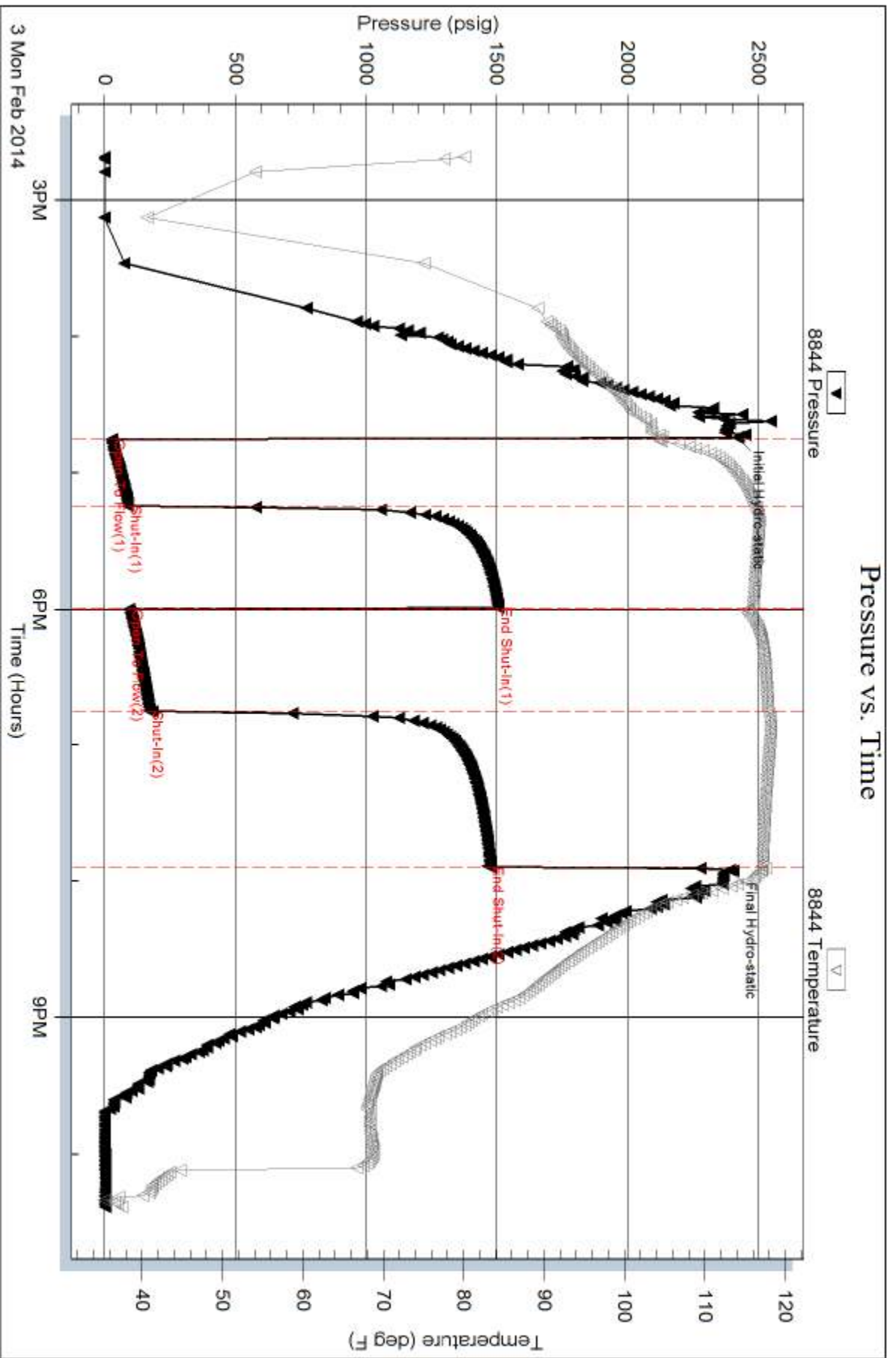
Total Length: 341.00 ft      Total Volume: 4.784 bbl  
 Num Fluid Samples: 0      Num Gas Bombs: 0      Serial #:  
 Laboratory Name:      Laboratory Location:  
 Recovery Comments: rw .448 @ 30\*f= 32,000 chlor

Serial #: 8844

Outside American Warrior Inc

Congdon #12-28

DST Test Number: 3



Triobite Testing, Inc

Ref. No: 56625

Printed: 2014.02.05 @ 11:13:15

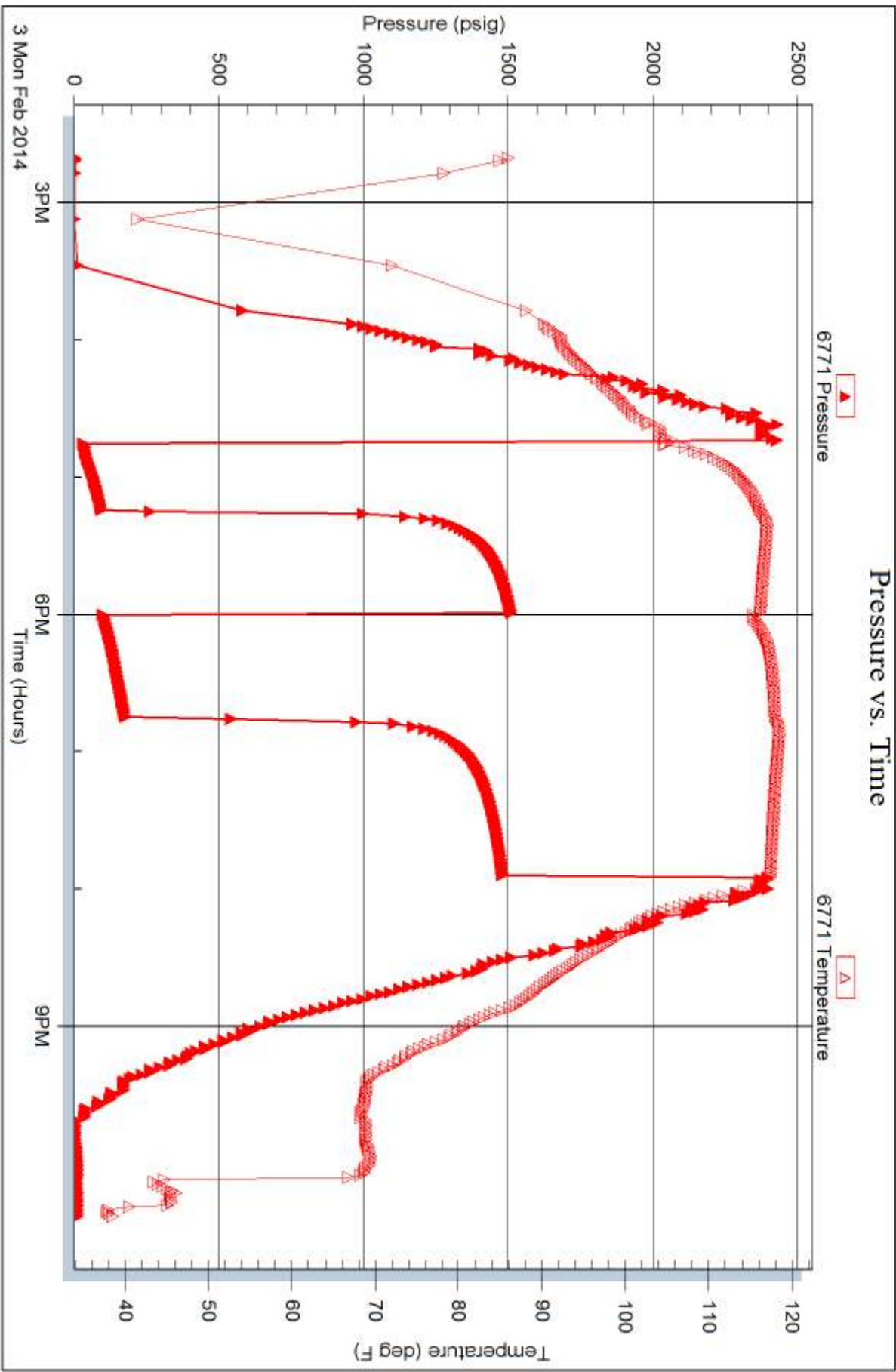
Serial #: 6771

Inside

American Warrior Inc

Congdon #12-28

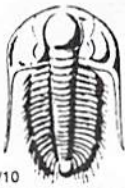
DST Test Number: 3



Tribble Testing, Inc

Ref. No: 56625

Printed: 2014.02.05 @ 11:13:15



# TRILOBITE TESTING INC.

1515 Commerce Parkway • Hays, Kansas 67601

## Test Ticket

NO. 56623

4/10

Well Name & No. Gangdon # 12-28 Test No. #1 Date 2/1/14  
 Company AWT Elevation 2852 KB 2840 GL  
 Address P.O. Box 399 Garden City, Ks 67846  
 Co. Rep / Geo. Kevin Tomson Rig Duke #1  
 Location: Sec. 28 Twp. 23s Rge. 32w Co. Finney State Ks

Interval Tested 4503 4540 Zone Tested Cherokee  
 Anchor Length 37 Drill Pipe Run 4506 Mud Wt. 9.2  
 Top Packer Depth 4498 Drill Collars Run — Vis 57  
 Bottom Packer Depth 4503 Wt. Pipe Run — WL 6.4  
 Total Depth 4540 Chlorides 1700 ppm System LCM #2  
 Blow Description 1/4" id blow died in 8 min  
No return  
No blow  
Pull Tool

Rec	Feet of	%gas	%oil	%water	%mud
<u>1'</u>	<u>Mud</u>			<u>100%</u>	
Rec	Feet of	%gas	%oil	%water	%mud
Rec	Feet of	%gas	%oil	%water	%mud
Rec	Feet of	%gas	%oil	%water	%mud
Rec	Feet of	%gas	%oil	%water	%mud

Rec Total 1' BHT 104° Gravity — API RW — @ — ° F Chlorides — ppm

(A) Initial Hydrostatic <u>2223</u>	<input checked="" type="checkbox"/> Test <u>1250</u>	T-On Location <u>11:35</u>
(B) First Initial Flow <u>17</u>	<input checked="" type="checkbox"/> Jars <u>250</u>	T-Started <u>12:30</u>
(C) First Final Flow <u>18</u>	<input checked="" type="checkbox"/> Safety Joint <u>75</u>	T-Open <u>14:33</u>
(D) Initial Shut-In <u>28</u>	<input checked="" type="checkbox"/> Circ Sub <u>N/C</u>	T-Pulled <u>15:43</u>
(E) Second Initial Flow <u>17</u>	<input type="checkbox"/> Hourly Standby	T-Out <u>17:42</u>
(F) Second Final Flow <u>18</u>	<input checked="" type="checkbox"/> Mileage <u>72 RT</u> 111.60	Comments
(G) Final Shut-In <u>—</u>	<input type="checkbox"/> Sampler	
(H) Final Hydrostatic <u>2214</u>	<input type="checkbox"/> Straddle	<input type="checkbox"/> Ruined Shale Packer
	<input type="checkbox"/> Shale Packer	<input type="checkbox"/> Ruined Packer
	<input type="checkbox"/> Extra Packer	<input type="checkbox"/> Extra Copies
	<input type="checkbox"/> Extra Recorder	Sub Total <u>0</u>
	<input type="checkbox"/> Day Standby	Total <u>1686.60</u>
	<input type="checkbox"/> Accessibility	MP/DST Disc't <u>X</u>
	Sub Total <u>1686.60</u>	

Approved By \_\_\_\_\_ Our Representative [Signature]  
 Trilobite Testing Inc. shall not be liable for damaged of any kind of the property or personnel of the one for whom a test is made, or for any loss suffered or sustained, directly or indirectly, through the use of its equipment, or its statements or opinion concerning the results of any test, tools lost or damaged in the hole shall be paid for at cost by the party for whom the test is made.



# TRILOBITE TESTING INC.

1515 Commerce Parkway • Hays, Kansas 67601

## Test Ticket

NO. 56624

Well Name & No. Congdon #12-28 Test No. #2 Date 2/2/14  
 Company AWI Elevation 2852 KB 2840 GL  
 Address P.O. Box 399 Garden City, Ks 67844  
 Co. Rep / Geo. Kevin Timson Rig Duke #1  
 Location: Sec. 28 Twp. 23S Rge. 32W Co. Finney State Ks

Interval Tested 4684 4711 Zone Tested 4 Marrow  
 Anchor Length 27 Drill Pipe Run 4662' Mud Wt. 9.4  
 Top Packer Depth 4679 Drill Collars Run — Vis 48  
 Bottom Packer Depth 4684 Wt. Pipe Run — WL 7.2  
 Total Depth 4711 Chlorides 2500 ppm System LCM #1

Blow Description 1/4" in blow died on cement  
No return  
No blow  
Pull Tool

Rec	Feet of	%gas	%oil	%water	%mud
3'	Mud			100	

Rec Total 3' BHT 2349 Gravity — API RW — @ — °F Chlorides — ppm

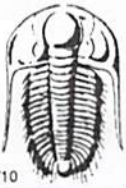
(A) Initial Hydrostatic 2349  Test 1250 T-On Location 15:00  
 (B) First Initial Flow 22  Jars 250 T-Started 15:55  
 (C) First Final Flow 23  Safety Joint 75 T-Open 18:21  
 (D) Initial Shut-In 41  Circ Sub W/C T-Pulled 19:37  
 (E) Second Initial Flow 24  Hourly Standby T-Out 22:35  
 (F) Second Final Flow 23  Mileage 72.5 111.60 Comments  
 (G) Final Shut-In —  Sampler  Ruined Shale Packer  
 (H) Final Hydrostatic 2274  Straddle  Ruined Packer  
 Shale Packer  Extra Copies  
 Extra Packer  Extra Recorder  
 Extra Recorder  Day Standby  
 Accessibility

Initial Open 30  
 Initial Shut-In 30  
 Final Flow 10  
 Final Shut-In Pull Tool

Sub Total 0  
 Total 1686.60  
 MP/DST Disc't X

Approved By \_\_\_\_\_ Our Representative [Signature]

Trilobite Testing Inc. shall not be liable for damaged of any kind of the property or personnel of the one for whom a test is made, or for any loss suffered or sustained, directly or indirectly, through the use of its equipment, or its statements or opinion concerning the results of any test, tools lost or damaged in the hole shall be paid for at cost by the party for whom the test is made.



# TRILOBITE TESTING INC.

1515 Commerce Parkway • Hays, Kansas 67601

## Test Ticket

NO. 56625

4/10

Well Name & No. Congdon #12-28 Test No. #3 Date 2/3/14  
 Company AWI Elevation 2852 KB 2840 GL  
 Address P.O. Box 399 Garden City, Ks 67846  
 Co. Rep / Geol. Kevin Timson Rig Duke #1  
 Location: Sec. 28 Twp. 23s Rge. 32 W Co. Finney State Ks

Interval Tested 4780 4796 Zone Tested St. Louis  
 Anchor Length 16 Drill Pipe Run 4756 Mud Wt. 9.4  
 Top Packer Depth 4775 Drill Collars Run --- Vis 54  
 Bottom Packer Depth 4780 Wt. Pipe Run --- WL 6.4  
 Total Depth 4796 Chlorides 3000 ppm System LCM #1

Blow Description B.O.B. in 8 1/2 min.  
2 1/2" in Return blow  
B.O.B. in 10 min.  
9 1/2" in Return blow

Rec	Feet of	%gas	%oil	%water	%mud
<u>31</u>	<u>C90</u>	<u>15</u>	<u>85</u>		
<u>93</u>	<u>90 3/4 mcs</u>	<u>15</u>	<u>15</u>	<u>50</u>	<u>20</u>
<u>93</u>	<u>95 mcs</u>	<u>15</u>		<u>80</u>	<u>5</u>
<u>124</u>	<u>9w</u>	<u>15</u>		<u>85</u>	
	<u>(1023' GAS IN PIPE)</u>				

Rec Total 341 BHT 117° Gravity 32 API RW .448 @ 30° F Chlorides 32,000 ppm

(A) Initial Hydrostatic 2420  Test 1250 T-On Location 14:25  
 (B) First Initial Flow 25  Jars 250 T-Started 14:40  
 (C) First Final Flow 89  Safety Joint 75 T-Open 16:43  
 (D) Initial Shut-In 1506  Circ Sub N/C T-Pulled 19:43  
 (E) Second Initial Flow 93  Hourly Standby \_\_\_\_\_ T-Out \_\_\_\_\_  
 (F) Second Final Flow 171  Mileage 72 RE 111.60 Comments \_\_\_\_\_  
 (G) Final Shut-In 1475  Sampler \_\_\_\_\_  
 (H) Final Hydrostatic 2390  Straddle \_\_\_\_\_  Ruined Shale Packer \_\_\_\_\_

Initial Open 30  Shale Packer \_\_\_\_\_  Ruined Packer 320  
 Initial Shut-In 45  Extra Packer \_\_\_\_\_  Extra Copies \_\_\_\_\_  
 Final Flow 45  Extra Recorder \_\_\_\_\_ Sub Total 0  
 Final Shut-In 60  Day Standby \_\_\_\_\_ Total 2006.60  
 Accessibility \_\_\_\_\_ MP/DST Disc't X  
 Sub Total 1686.60

Approved By \_\_\_\_\_ Our Representative [Signature]

Trilobite Testing Inc. shall not be liable for damaged of any kind of the property or personnel of the one for whom a test is made, or for any loss suffered or sustained, directly or indirectly, through the use of its equipment, or its statements or opinion concerning the results of any test, tools lost or damaged in the hole shall be paid for at cost by the party for whom the test is made.