



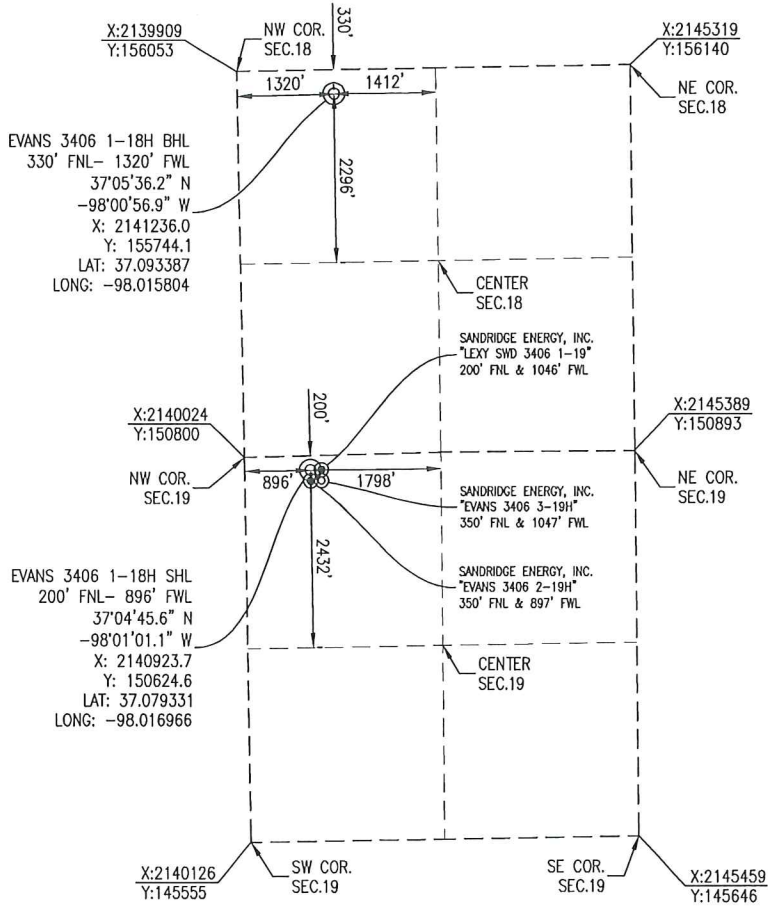
Crafton Tull
 SURVEYING

HARPER COUNTY, KANSAS
 200' FNL- 896' FWL SECTION 19 TOWNSHIP 34S RANGE 06W 6TH P.M.



GRID NORTH (NAD 83)
 KANSAS - SOUTH ZONE

BOTTOM HOLE INFORMATION PROVIDED
 BY OPERATOR LISTED AND CORNER
 COORDINATES ARE TAKEN FROM POINTS
 SURVEYED IN THE FIELD.



OPERATOR: SANDRIDGE ENERGY, INC.

WELL NO: 1-18H

ELEVATION:
 1345' GR. AT STAKE

LEASE NAME: EVANS 3406

TOPOGRAPHIC & VEGETATION: LOCATION FELL IN A FIELD

GOOD DRILL SITE: YES REFERENCE STAKES OR ALTERNATE LOCATION STAKES SET: NONE

BEST ACCESSIBILITY TO LOCATION: NORTH OR WEST LINE

DISTANCE & DIRECTION
 FROM HWY JCT OR TOWN: FROM THE JCT. OF KS-44 & SE 10 AVE (ANTHOHY, KS) TRAVEL SOUTH ON SE 10 AVE FOR ±5.0 MILES TO THE NORTHWEST CORNER OF SECTION 19, T34S-R06W.

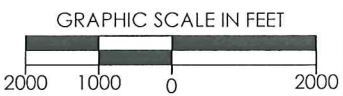
(THE FOLLOWING INFORMATION WAS GATHERED USING A GPS RECEIVER ACCURACY ±2-3 METERS)

GPS DATUM: NAD-27
 LAT: 37.079331
 LONG: -98.016966

STATE PLANE COORDINATES:
 ZONE: KS-SOUTH NAD-27
 X: 2140923.7
 Y: 150624.6

DATE STAKED: 2-19-2014

GENERAL NOTES:
 THE TIES AND FOOTAGES SHOWN ON THIS PLAT ARE FROM LINES OF OCCUPATION FROM A SURVEY MADE ON THE GROUND AND / OR BEARING AND DISTANCES FROM THE GENERAL LAND OFFICE PLAT OF THE AREA SHOWN AND MAY NOT BE THE ACTUAL PROPERTY CORNERS. THIS PLAT DOES NOT REPRESENT A TRUE BOUNDARY SURVEY. DRILL SITE CONDITION DETERMINATIONS WERE MADE BY SANDRIDGE ENERGY INC. REPRESENTATIVES.



REVISION		SandRidge	
△	MOVED SHL (2-19-2014)	"EVANS 3406 1-18H" PART OF THE NW 1/4 OF SECTION 19, T-34-S, R-06-W PROPOSED DRILL SITE HARPER COUNTY, KANSAS	
SCALE: 1" = 2000'		DRAWN BY: MF SHEET NO.: 1 OF 4	
PLOT DATE: 02-21-2014			

Evans 3406 1-18H

Harper County

Unit Description:

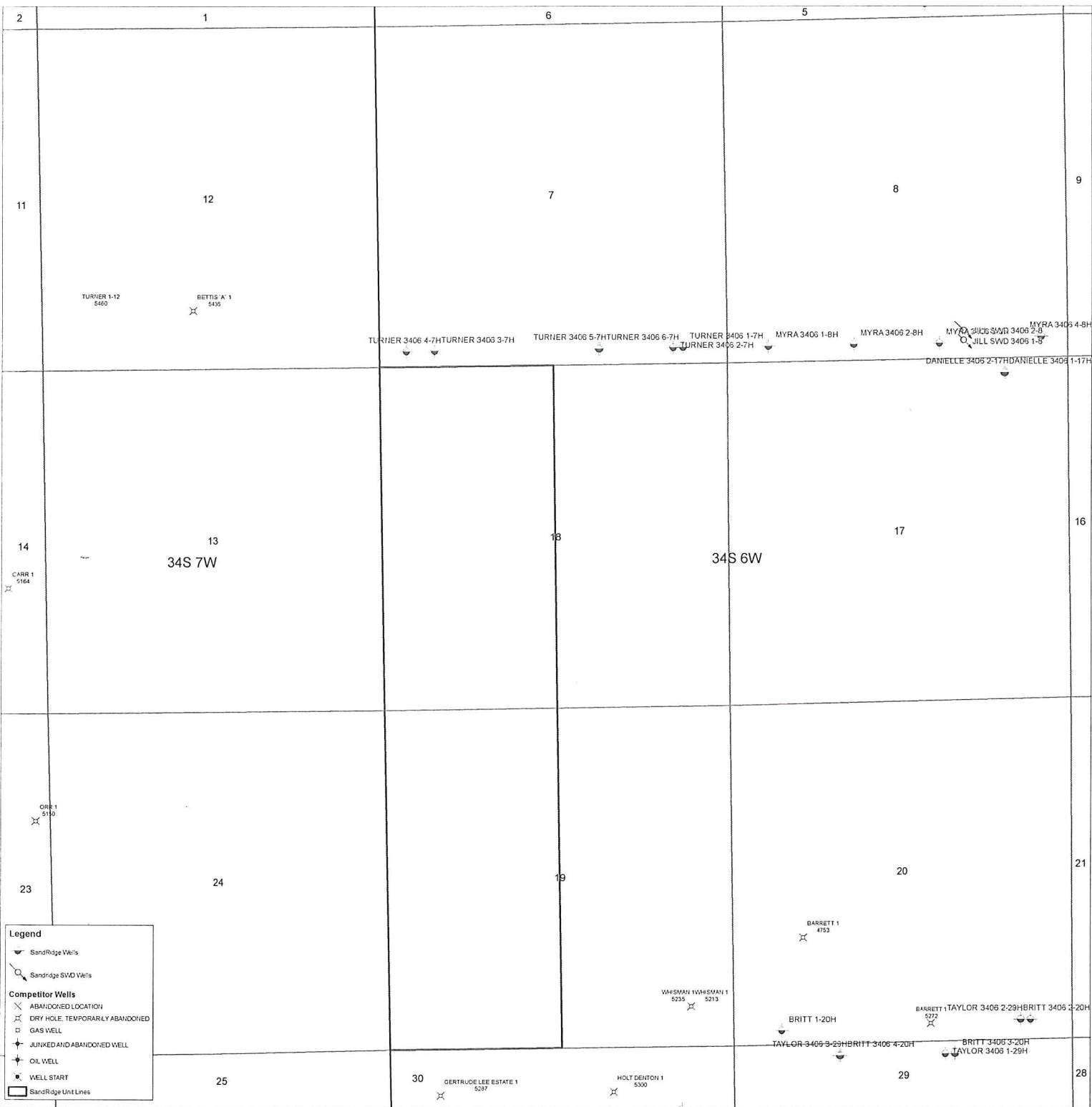
W/2 of 18-34S-6W and W/2 of 19-34S-6W

Surface Owners:

Ricky J and Valeria J Podschun

295 SE 10 Road

Anthony, KS 67003



Legend

- SandRidge Well
- SandRidge SWD Well

Competitor Wells

- ABANDONED LOCATION
- DRY HOLE, TEMPORARILY ABANDONED
- GAS WELL
- JUNKED AND ABANDONED WELL
- OIL WELL
- WELL START
- SandRidge Unit Lines

