

LINN OPERATING INC. BEATY D-4 ATU-189
 150' FSL
 562' FEL
 SE/4 OF SE/4 OF SE/4 OF
 SECTION 33, T-25-S, R-38-W
 LATITUDE: 37°49'41.31525" N
 LONGITUDE: 101°29'20.60159" W
 GROUND ELEVATION: 3240.0'



Keller
 Surveying &
 Mapping

2330 B LAKEVIEW DRIVE
 AMARILLO, TEXAS 79109
 PH: (806) 418-6253

DRAWN BY: MTK
 APPROVED BY: JOK
 SCALE: 1" = 200'
 DATE: 11/05/13



2225 W. OKLAHOMA AVE.
 ULYSSES KANSAS 67880
 PH: (620) 356-6940
 FAX: (620) 356-6950

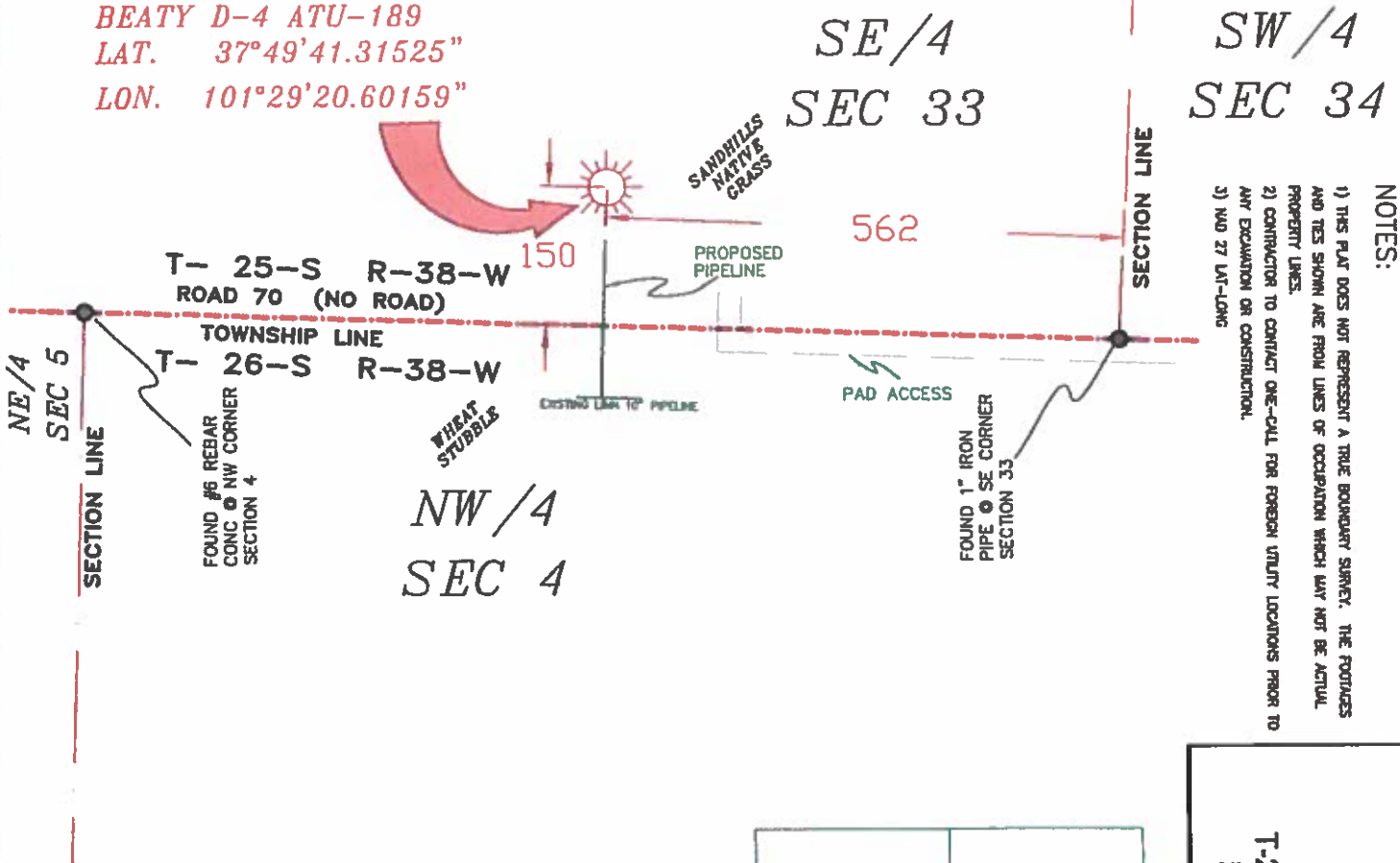
DRIVING DIRECTIONS:

BEGINNING AT INTERSECTION OF US HWY 160 & HWY 25

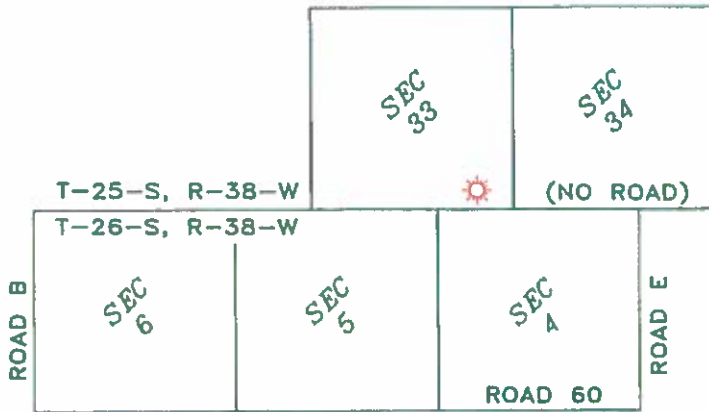
- 1) 14 MILES NORTH ON HWY 25
- 2) 7 MILES WEST ON ROAD 40
- 3) 2.75 MILES NORTH ON ROAD D
- 4) .25 MILES EAST ON TRAIL ROAD
- 5) .5 MILES NORTH ON TRAIL ROAD
- 6) .15 MILES WEST



LINN OPERATING INC.
BEATY D-4 ATU-189
LAT. 37°49'41.31525"
LON. 101°29'20.60159"



- NOTES:**
- 1) THIS PLAT DOES NOT REPRESENT A TRUE BOUNDARY SURVEY. THE FOOTAGES AND TIES SHOWN ARE FROM LINES OF OCCUPATION WHICH MAY NOT BE ACTUAL PROPERTY LINES.
 - 2) CONTRACTOR TO CONTACT ONE-CALL FOR FOREIGN UTILITY LOCATIONS PRIOR TO ANY EXCAVATION OR CONSTRUCTION.
 - 3) NAD 27 LAT-LONG



KEARNY COUNTY, KANSAS

LINN OPERATING INC.
BEATY D-4 ATU-189
 SECTIONS 33 & 34, 4 & 5,
 T-25-S, R-38-W & T-26-S, R-38-W
 KEARNY COUNTY, KANSAS



JOHN DAVID KELLER, L.S. NO. 1518

PLAT AND CERTIFICATION OF ACREAGE ATTRIBUTABLE TO A GAS WELL

Kansas Corporation Commission, Conservation Division
 Finney State Office Building, 130 South Market, Room 2078
 Wichita, Kansas 67202

API NUMBER 15- _____

LOCATION OF WELL: COUNTY Kearney

OPERATOR Linn Operating, Inc.

150 S feet from south/north line of section
 562 E feet from east / west line of section

LEASE Beaty

WELL NUMBER D-4 ATU-189

FIELD Hugoton-Panoma

SECTION 33 TWP 25 (S) RG 38W E/W

IS SECTION X REGULAR or _____ IRREGULAR

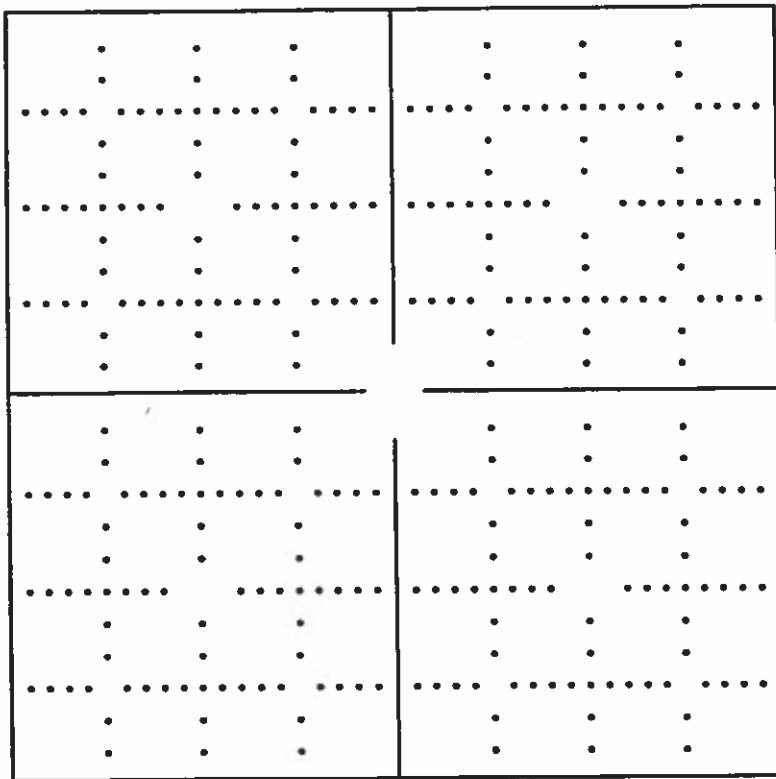
IF SECTION IS IRREGULAR, LOCATE WELL FROM
 NEAREST CORNER BOUNDARY. (check line below)

Section corner used: NE NW SE SW

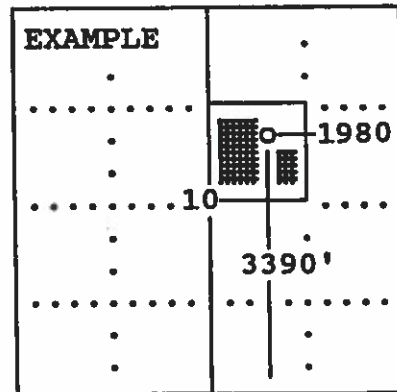
NUMBER OF ACRES ATTRIBUTABLE TO WELL 640

QTR/QTR/QTR OF ACREAGE SE - SE - SE

(Show the location of the well and shade attributable acreage for prorated or spaced wells).
 (Show the footage to the nearest lease or unit boundary line; and show footage to the nearest
 common source supply well).



*see attached
map*



SEWARD CO.

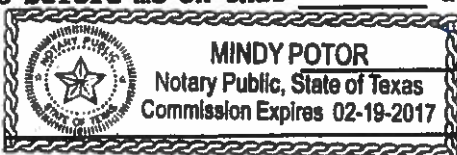
The undersigned hereby certifies as Regulatory Compliance Advisor (title) for

Linn Operating, Inc. (Co.), a duly authorized agent, that all

information shown hereon is true and correct to the best of my knowledge and belief, that all acreage claimed attributable to the well named herein is held by production from that well and hereby make application for an allowable to be assigned to the well upon the filing of this form and the State test, whichever is later.

Signature *Shawn Henson*

Subscribed and sworn to before me on this 26th day of February, 19 2014



Mindy Poter
 Notary Public

My Commission expires

FORM CG-8 (12/94)

33

LINN OPERATING INC
BEATY GU D-1
CHASE 1
TD 2,838

LINN OPERATING INC
BEATY GU D-2
COUNCIL GROVE 1
TD 2,900

34

LINN OPERATING INC
MAX COHEN B-1
CHASE 1
TD 2,640

LINN OPERATING INC
BEATY GU D-3H
CHASE 1
TD 3,124

LINN OPERATING INC
MAX COHEN S-3H
CHASE 1
TD 2,745

LINN OPERATING INC
MAX COHEN B-2A
COUNCIL GROVE 1
TD 2,817

LINN OPERATING INC
MAX COHEN B-2
TD 1,130

25S 38W

26S 38W

ATU WELL

5

LINN OPERATING INC
SPENCER GU 3H
CHASE 1
TD 2,802

LINN OPERATING INC
SPENCER GU B-1
TD 5,600

LINN OPERATING INC
SPENCER GU 1
CHASE 1
TD 2,873

LINN OPERATING INC
L.B. WILLETTS A-1
CHASE 1
TD 2,672

LINN OPERATING INC
L.B. WILLETTS GU A-3H
CHASE 1
TD 2,777

LINN OPERATING INC
L.B. WILLETTS A-2
COUNCIL GROVE 1
TD 2,830

LINN OPERATING INC
SPENCER GU 2
COUNCIL GROVE 1
TD 2,848

4




LINN Operating Inc

Hugoton Kansas

ATU Location

Kearny Co. 25/26S-38W



- WELL SYMBOLS
-  ATU Well Location
 -  Gas Well
 -  Plugged and Abandoned